

18th Century Material Culture Clog & Shoe Clasps



“...stock, shoe, and knee clasps”

James Hamilton, Goldsmith;
From LONDON;

MAKES and sells all sorts of

gold and silver work, in the best and neatest manner, viz. Turettes, teakettles, bread baskets, chafing dishes, coffee pots, large and small cans, tankards, waiters, punch bowls, stop bowls, porringers, fluted and plain soup spoons, table, pap, and tea spoons, candlesticks, pepper boxes and casters, sugar dishes, punch and tea strainers, plain, carved, and pierced tea tongs, cream-pots, gadrooned, and plain salts, carved, pierced, and gadrooned sword kilt, carved, pierced, and plain shoe, knee, stock, and breast buckles, coat and jacket buttons, sleeve buttons and studs, stock, shoe, and knee clasps, whistles and bells for children, whip and cane heads, spurs, pin-cushion scissors, watch chains, seals of all sorts, all sorts of work for *Indian* traders, gold buttons and studs, gold rings, tortoiseshell rings lined with gold, gold lockets for childrens necks, masons medals, doctors instruments, with many other things in the gold and silver way, too tedious to insert.

N. B. As the said *James Hamilton* had an opportunity of seeing the best work done both in *London* and *Dublin*, he hopes to give satisfaction to all those that please to employ him; and as he is a young beginner, will sell on the most reasonable terms.

FREDERICKSBURG, April 10, 1766.

Advertisement for "...stock, shoe, and knee clasps." in addition to "shoe, knee, stock, and breast buckles"

For Fredericksburg, Maryland - Virginia Gazette of April 18, 1766

(Courtesy Steve Rayner)

Clog & Shoe Clasps

Clog & Shoe Clasps are small metal fastening devices which get their namesake for the role they played in the closure of inexpensive clogs worn by the common populace and some shoes, primarily worn by children, during the 17th through 19th centuries. While many extant artifacts reveal that they were crudely made out of inexpensive stamped sheet metals, there also exists silver versions of these clasps which suggests that they were used by a more genteel clientele.

It is quite possible that this style of clasp was also manufactured for other functions. They may have also been used for fastening books, pocketbooks, and similar objects. While accounts of “Knee Clasps” exist, it is possible, but not certain, that a style of clasp like these may have been used for such a purpose. Irregardless of their use, clog and shoe clasps were held in place by a simple “T” shaped flange that was placed through a slot opening in the article to be closed then peened over.





Detail: John, Fourteenth Lord Willoughby de Broke, & his Family, Showing a Child's Shoe Closed with Clasps Likely Made of Silver
by Johann Zofanny c. 1766
(Getty Center)



Portrait of a Girl Holding a Gun & Wearing Red Shoes Fastened with Silver Clasps
Late 18th - Early 19th Century
(Hampel Auctions)



Detail of Two Sisters Showing One Wearing Pink Shoes Fastened with Clasps
by Carl-Ludwig Christinek 1772
(National Arts Museum of the Republic of Belarus)



A Child Wearing Shoes Fastened with Clasps
by John Flaxman 1772
(The British Museum)



Shoes Worn by Derrick Crusen (Born 1770) of Philadelphia, Pennsylvania
Latchets Slit for Either a Ribbon Tie or Clasps c. 1774
(Zymoglophic Museum)



English Leather Book Cover Closed by a Clasp Similar to a Clog or Shoe Clasp
16th Century
(Dartmouth College)

Silver
Clog & Shoe Clasps



English Silver Clasp
by Wakely & Wheeler of London c. 1750 - 1760
(Colchester Treasure Hunting & Metal Detecting)



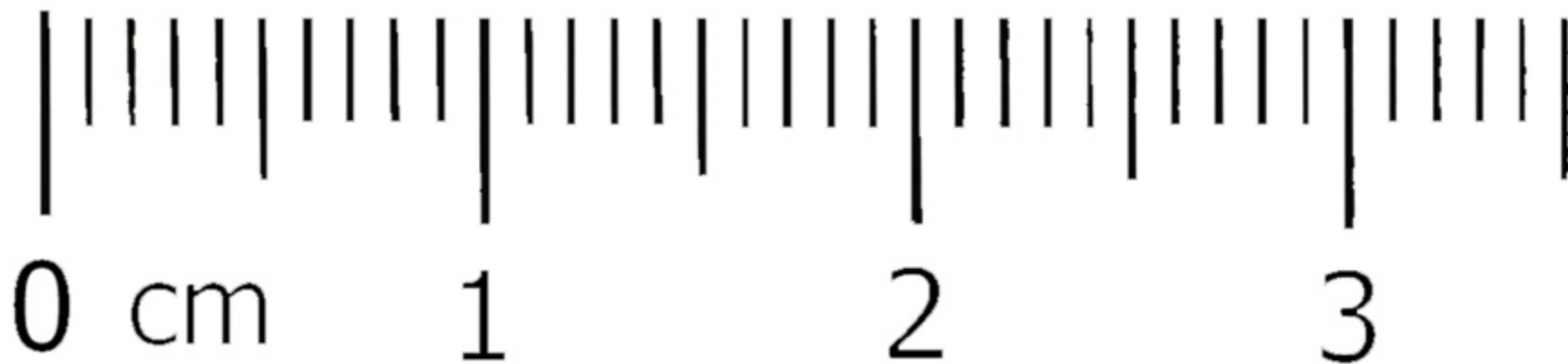
English Silver Clasp
by Wakely & Wheeler of London c. 1750 - 1760
(Colchester Treasure Hunting & Metal Detecting)



English Silver Clasp
by Wakely & Wheeler of London c. 1750 - 1760
(Colchester Treasure Hunting & Metal Detecting)



English Silver Clasp Initialed "TA"
by "LB" 18th Century
(Colchester Treasure Hunting & Metal Detecting)



English Silver Clasp from Somerset
by "LB" 18th Century
(Birmingham Museum and Art Gallery - Portable Antiquities Scheme)

cms



cms

English Silver Clasp from the Isle of Wright
18th Century
(Portable Antiquities Scheme)



English Silver Clasp from Gloucestershire
by "SI" Pre - 1784
(UK Detector Finds Database)



English Silver Clasp from Surrey
Pre - 1784
(UK Detector Finds Database)



English Silver Clasp from Norfolk
18th Century
(UK Detector Finds Database)



English Silver Clasp from Nottinghamshire
Marked "AE" Pre - 1784
(UK Detector Finds Database)



English Silver Clasp from Kent
18th Century
(Portable Antiquities Scheme)



English Silver Clasp from Shropshire
18th - Early 19th Century
(UK Detector Finds Database)



English Silver Clasps
by Wakely & Wheeler of London c. 1750 - 1760
(Colchester Treasure Hunting & Metal Detecting)



English Silver Clasps
by Wakely & Wheeler of London c. 1750 - 1760
(Colchester Treasure Hunting & Metal Detecting)



English Silver Clasp
by Female Silversmith, Hester Bateman, of London c. 1761 - 1780
(London Assay Office - Colchester Treasure Hunting & Metal Detecting)



English Silver Clasp
by "RN" c. 1760 - 1765
(Colchester Treasure Hunting & Metal Detecting)



English Silver Clasp
by Charles Houghton of London 18th Century
(Colchester Treasure Hunting & Metal Detecting)



English Silver Clasp
by "MT" 18th Century
(Colchester Treasure Hunting & Metal Detecting)



English Silver Clasp
Marked "CB" c. 1760 - 1765
(Colchester Treasure Hunting & Metal Detecting)



English Silver Clasp from North Hertfordshire
by "TA" Pre - 1784
(UK Detector Finds Database)



English Silver Clasp
Likely by Robert Makepiece I of Newcastle 1753
(Colchester Treasure Hunting & Metal Detecting)



English Silver Clasp
by Wakely & Wheeler of London c. 1750 - 1760
(Colchester Treasure Hunting & Metal Detecting)



English Silver Clasp from Essex
by "IH" 18th - Early 19th Century
(UK Detector Finds Database)



English Silver Clasp from North Hertfordshire
by "IH" 18th - Early 19th Century
(UK Detector Finds Database)



English Silver Clasp from North Yorkshire
18th - Early 19th Century
(UK Detector Finds Database)



English Silver Clasp from Northamptonshire
18th - Early 19th Century
(UK Detector Finds Database)



English Silver Clasp from North Yorkshire
18th - Early 19th Century
(UK Detector Finds Database)



English Silver Clasp from North Yorkshire
Pre - 1784
(UK Detector Finds Database)



English Silver Clasp from Essex
by "WI" or "WT" 18th - Early 19th Century
(UK Detector Finds Database)



English Silver Clasp from Durham
by "TM" c, 1784 - 1785
(UK Detector Finds Database)

Silver Plated
Base Metal
Clog & Shoe Clasps



English Silver Plated Stamped Copper Alloy Sheet Metal Clasp from Lincolnshire
18th - Early 19th Century
(UK Detector Finds Database)

Base Metal
Clog & Shoe Clasps

cms

cms



English Stamped Sheet Metal Clasp from the Isle of Wright
Late 17th - 18th Century
(Isle of Wright Council - Portable Antiquities Scheme)



English Stamped Sheet Metal Clasp from Binbrook
Late 17th - 18th Century
(North Lincolnshire Museum - Portable Antiquities Scheme)



English Stamped Copper Alloy Sheet Metal Clasp from East Yorkshire
18th - Early 19th Century
(UK Detector Finds Database)



English Stamped Sheet Metal Clasp from North Yorkshire
Late 17th - 18th Century
(Janina Parol - Portable Antiquities Scheme)



English Stamped Sheet Metal Clasp
18th Century
(Colchester Treasure Hunting & Metal Detecting)



English Stamped Copper Sheet Metal Clasp from Norfolk
18th - Early 19th Century
(UK Detector Finds Database)



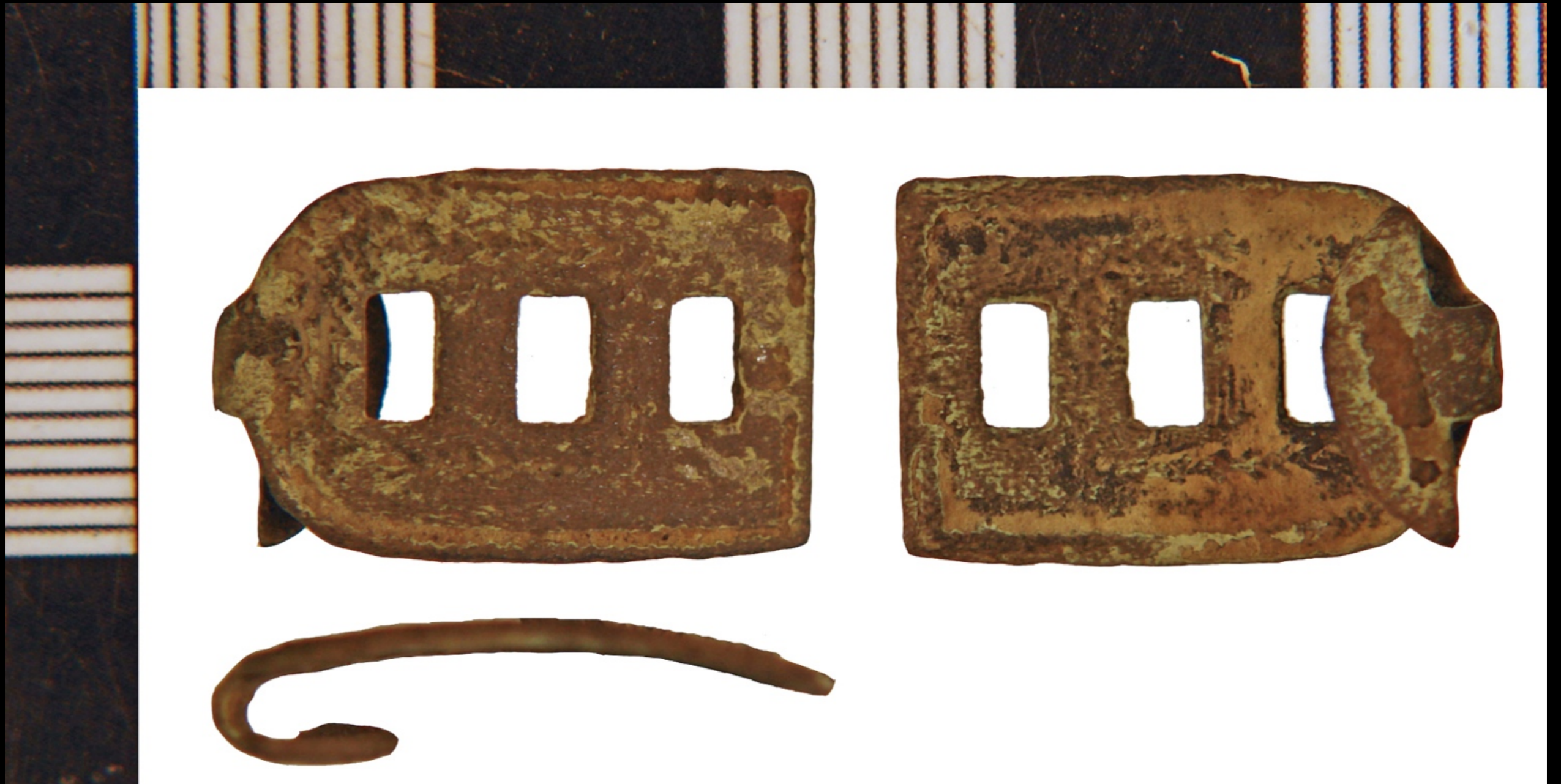
English Stamped Copper Sheet Metal Clasp from Northamptonshire
18th - Early 19th Century
(UK Detector Finds Database)



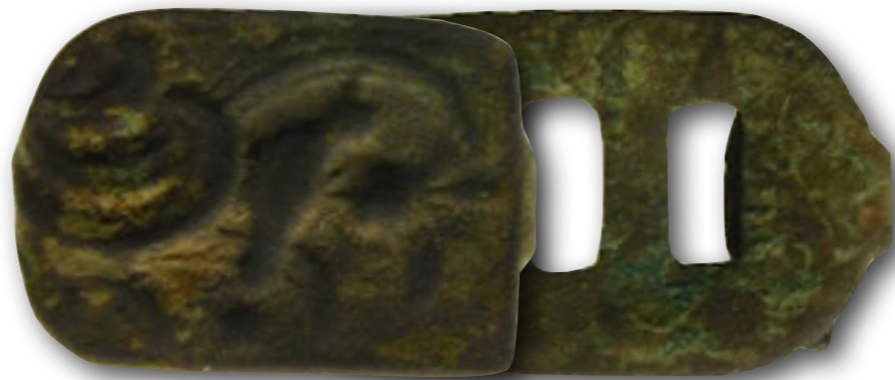
English Stamped Copper Alloy Sheet Metal Clasp from Hampshire
18th - Early 19th Century
(UK Detector Finds Database)



English Stamped Copper Alloy Sheet Metal Clasp from Northhamptonshire
18th - Early 19th Century
(UK Detector Finds Database)



English Stamped Sheet Metal Clasp from Essex
Late 17th - 18th Century
(North Lincolnshire Museum - Portable Antiquities Scheme)



English Stamped Sheet Metal Clasp
18th Century
(Colchester Treasure Hunting & Metal Detecting)

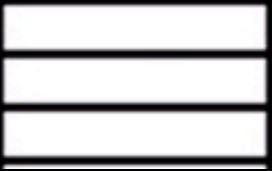


English Stamped Sheet Metal Clasp
18th Century
(Colchester Treasure Hunting & Metal Detecting)



English Stamped Copper Alloy Sheet Metal Clasp from Lincolnshire
18th - Early 19th Century
(UK Detector Finds Database)

cms



English Stamped Sheet Metal Clasp from the Isle of Wright
Late 17th - 18th Century
(Isle of Wright Council - Portable Antiquities Scheme)



English Stamped Sheet Metal Clasps
18th Century
(Colchester Treasure Hunting & Metal Detecting)



English Stamped Copper Alloy Sheet Metal Clasp from Devon
18th - Early 19th Century
(UK Detector Finds Database)



English Stamped Copper Alloy Sheet Metal Clasp from Norfolk
18th - Early 19th Century
(UK Detector Finds Database)



English Stamped Copper Alloy Sheet Metal Clasp from Essex
18th - Early 19th Century
(UK Detector Finds Database)



English Stamped Copper Alloy Sheet Metal Clasp from Nottinghamshire
18th - Early 19th Century
(UK Detector Finds Database)



English Stamped Copper Alloy Sheet Metal Clasp from the West Midlands
18th - Early 19th Century
(UK Detector Finds Database)



English Stamped Copper Alloy Sheet Metal Clasp from the West Midlands
18th - Early 19th Century
(UK Detector Finds Database)



English Stamped Sheet Metal Clasp from North Owersby
Late 17th - 18th Century
(North Lincolnshire Museum - Portable Antiquities Scheme)



English Stamped Copper Alloy Sheet Metal Clasp from Surrey
18th - Early 19th Century
(UK Detector Finds Database)



English Stamped Copper Alloy Sheet Metal Clasp from Gloucestershire
18th - Early 19th Century
(UK Detector Finds Database)



English Stamped Copper Alloy Sheet Metal Clasp from Northumberland
18th - Early 19th Century
(UK Detector Finds Database)



English Stamped Sheet Metal Clasps
Late 17th - 18th Century
(Portable Antiquities Scheme)



English Stamped Copper Alloy Sheet Metal Clasp from Cambridgeshire
18th - Early 19th Century
(UK Detector Finds Database)



English Stamped Copper Alloy Sheet Metal Clasp from North Yorkshire
18th - Early 19th Century
(UK Detector Finds Database)



English Stamped Sheet Metal Clasp from East Sussex
Late 17th - 18th Century
(Portable Antiquities Scheme)



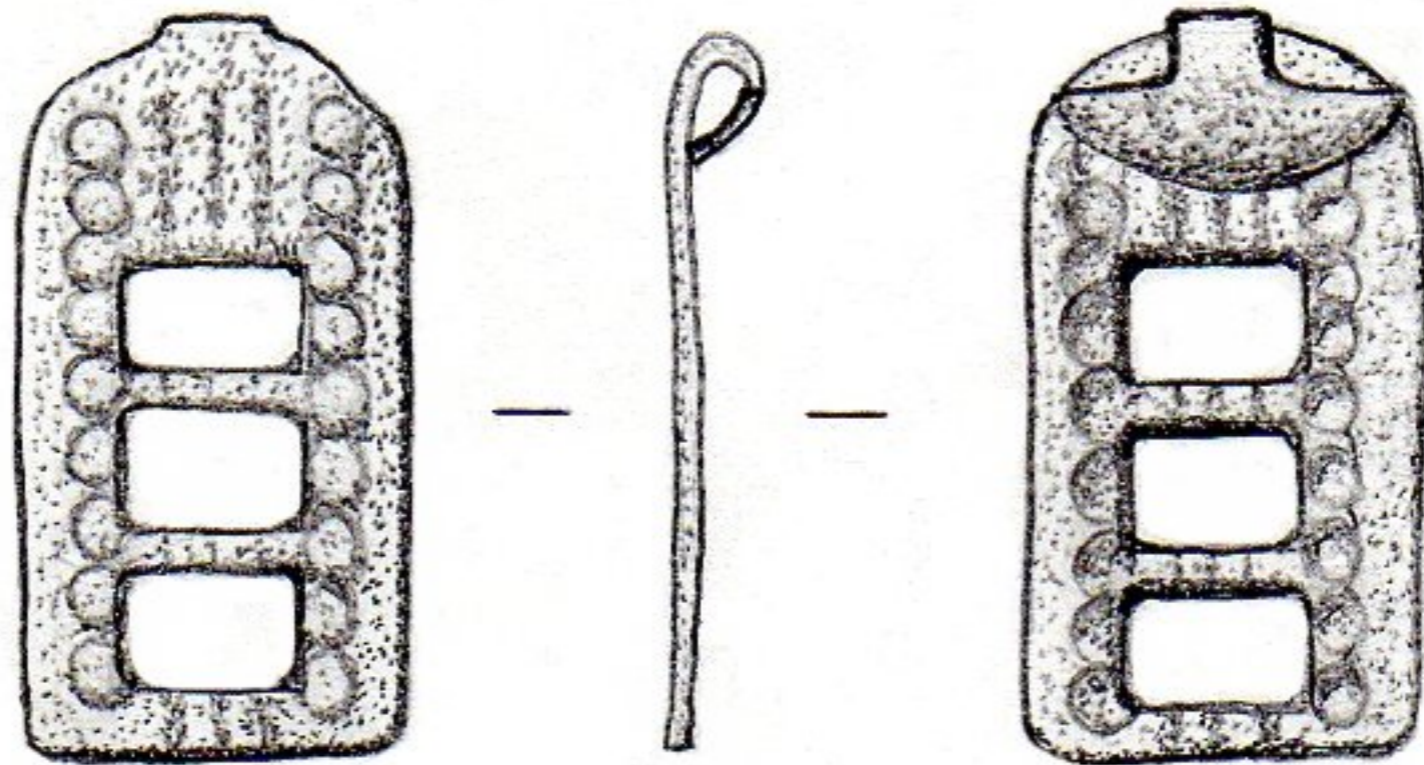
English Stamped Sheet Metal Clasp from West Sussex
Late 17th - 18th Century
(Portable Antiquities Scheme)



English Stamped Copper Alloy Sheet Metal Clasp from Norfolk
18th - Early 19th Century
(UK Detector Finds Database)



English Stamped Copper Alloy Sheet Metal Clasp from Northamptonshire
18th - Early 19th Century
(UK Detector Finds Database)



English Stamped Copper Alloy Sheet Metal Clasp from Norfolk
18th - Early 19th Century
(UK Detector Finds Database)



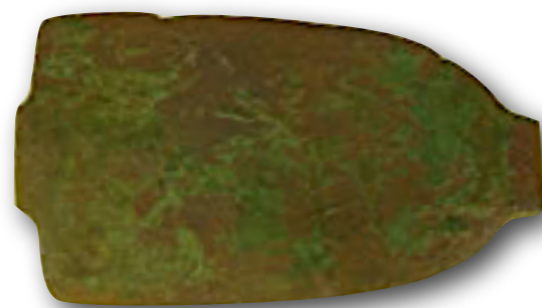
English Stamped Copper Alloy Sheet Metal Clasp from Surrey
18th - Early 19th Century
(UK Detector Finds Database)



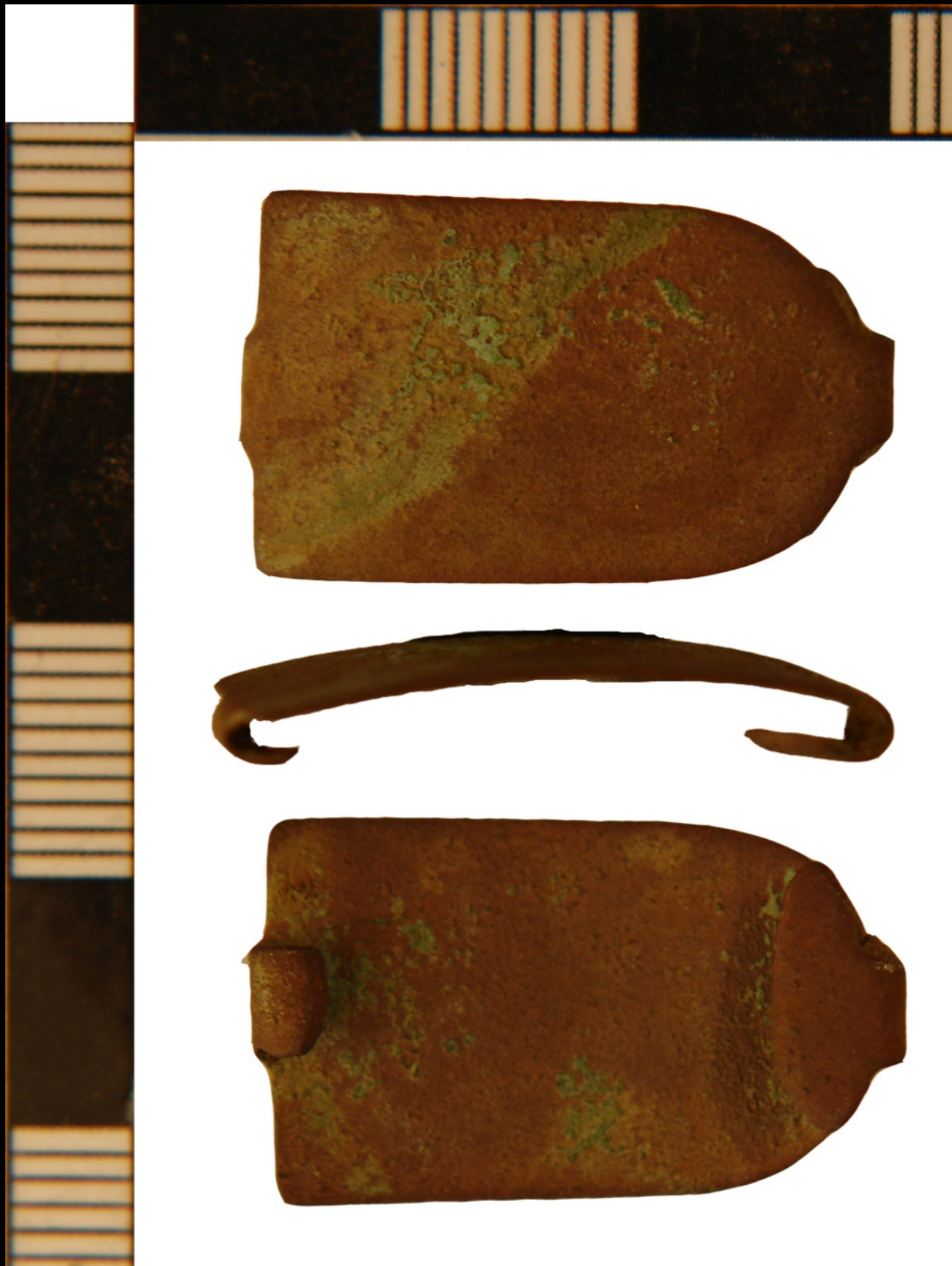
English Stamped Copper Alloy Sheet Metal Clasp from Wiltshire
18th - Early 19th Century
(UK Detector Finds Database)



English Stamped Copper Alloy Sheet Metal Clasp from Dorset
18th - Early 19th Century
(UK Detector Finds Database)



English Stamped Sheet Metal Clasps
18th Century
(Colchester Treasure Hunting & Metal Detecting)



English Stamped Sheet Metal Clasp
Late 17th - 18th Century
(North Lincolnshire Museum - Portable Antiquities Scheme)



English Stamped Copper Alloy Sheet Metal Clasp from North Yorkshire
18th - Early 19th Century
(UK Detector Finds Database)



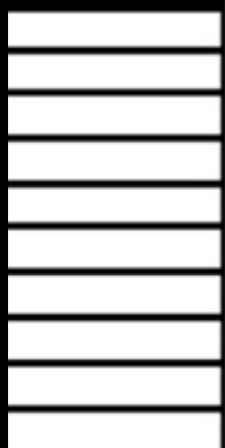
English Stamped Copper Alloy Sheet Metal Clasp from South Yorkshire
18th - Early 19th Century
(UK Detector Finds Database)



English Die - Stamped Sheet Metal Clasp from North Yorkshire
Late 17th - 18th Century
(York Museums Trust - Portable Antiquities Scheme)



English Stamped Copper Alloy Sheet Metal Clasp from Derbyshire
18th - Early 19th Century
(UK Detector Finds Database)



cms



cms



English Stamped Sheet Metal Clasp from the Isle of Wight
Late 17th - 18th Century
(The Isle of Wight Council - Portable Antiquities Scheme)



English Stamped Copper Alloy Sheet Metal Clasp from North Yorkshire
18th - Early 19th Century
(UK Detector Finds Database)



English Stamped Copper Alloy Sheet Metal Clasp from East Yorkshire
18th - Early 19th Century
(UK Detector Finds Database)



English Stamped Sheet Metal Clasp
1699
(Portable Antiquities Scheme)



English Stamped Sheet Metal Clasp from Hatfield
Late 17th - 18th Century
(North Lincolnshire Museum - Portable Antiquities Scheme)



English Stamped Sheet Metal Clasp from Cornwall
18th Century
(Royal Institution of Cornwall - Portable Antiquities Scheme)



English Stamped Copper Alloy Sheet Metal Clasp from North Yorkshire
18th - Early 19th Century
(UK Detector Finds Database)



English Stamped Copper Alloy Sheet Metal Clasp from North Yorkshire
18th - Early 19th Century
(UK Detector Finds Database)



English Stamped Copper Alloy Sheet Metal Clasp from North Yorkshire
18th - Early 19th Century
(UK Detector Finds Database)



English Stamped Copper Alloy Sheet Metal Clasp from North Yorkshire
18th - Early 19th Century
(UK Detector Finds Database)



English Stamped Copper Alloy Sheet Metal Clasp from Leicestershire
18th - Early 19th Century
(UK Detector Finds Database)



English Stamped Copper Alloy Sheet Metal Clasp from Shropshire
18th - Early 19th Century
(UK Detector Finds Database)



cms



cms



English Stamped Sheet Metal Clasp from Nottinghamshire
Late 17th - 18th Century
(York Museums Trust - Portable Antiquities Scheme)



English Stamped Copper Alloy Sheet Metal Clasp from Northhamptonshire
18th - Early 19th Century
(UK Detector Finds Database)



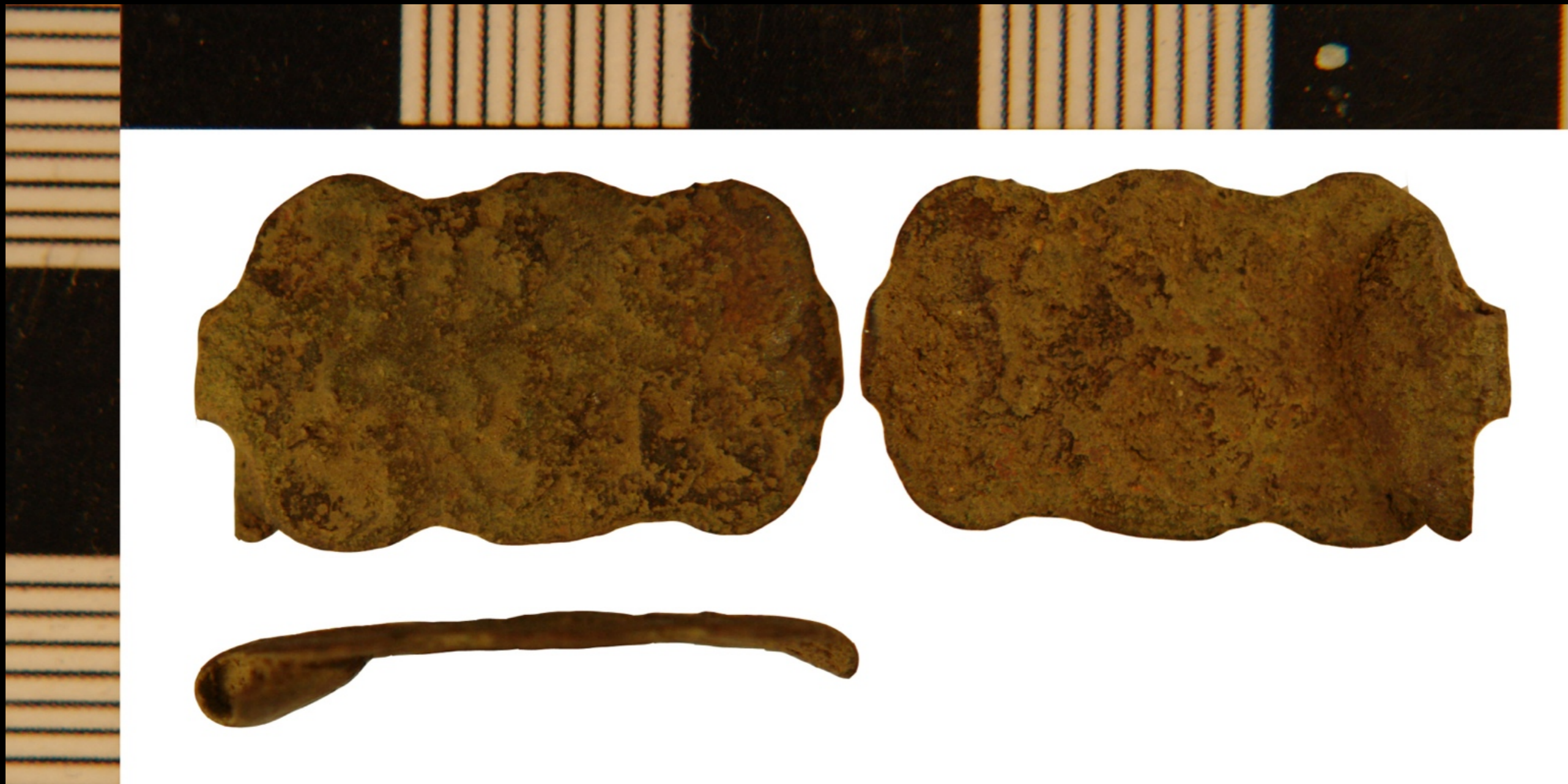
English Stamped Sheet Metal Clasps
18th Century
(Colchester Treasure Hunting & Metal Detecting)



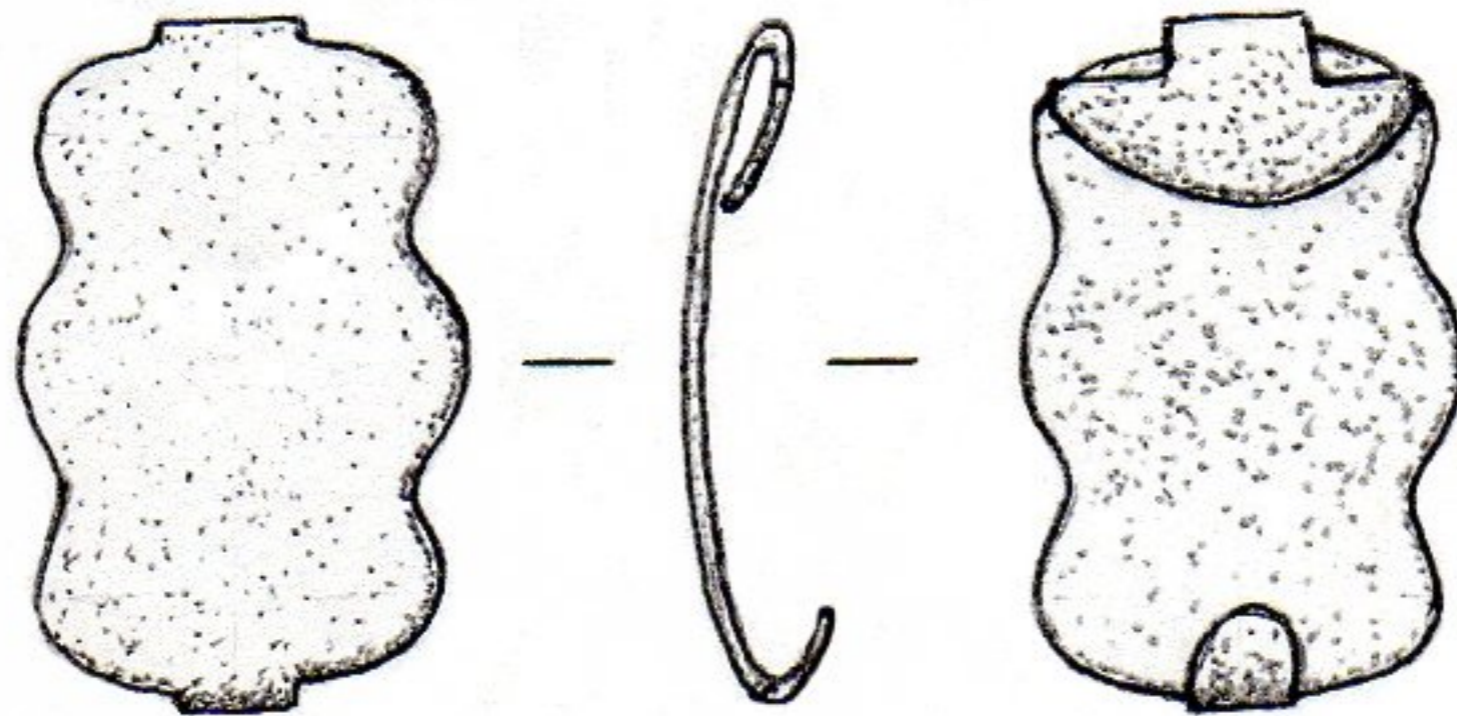
English Stamped Sheet Metal Clasp from East Riding of Yorkshire
Late 17th - 18th Century
(York Museums Trust - Portable Antiquities Scheme)



English Stamped Sheet Metal Clasp from Lincolnshire
Late 17th - 18th Century
(North Lincolnshire Museum - Portable Antiquities Scheme)



English Stamped Sheet Metal Clasp from North Spridlington
Late 17th - 18th Century
(North Lincolnshire Museum - Portable Antiquities Scheme)



English Stamped Copper Alloy Sheet Metal Clasp from Norfolk
18th Century
(UK Detector Finds Database)



English Stamped Copper Alloy Sheet Metal Clasp from Norfolk
18th Century
(UK Detector Finds Database)



English Stamped Copper Alloy Sheet Metal Clasp from Gloucestershire
18th - Early 19th Century
(UK Detector Finds Database)



English Stamped Copper Alloy Sheet Metal Clasp from Oxfordshire
18th - Early 19th Century
(UK Detector Finds Database)



English Stamped Copper Alloy Sheet Metal Clasp from Suffolk
18th - Early 19th Century
(UK Detector Finds Database)



English Stamped Copper Alloy Sheet Metal Clasp from North Yorkshire
18th - Early 19th Century
(UK Detector Finds Database)



English Stamped Copper Alloy Sheet Metal Clasp from West Yorkshire
18th - Early 19th Century
(UK Detector Finds Database)



English Stamped Copper Alloy Sheet Metal Clasp from Norfolk
18th - Early 19th Century
(UK Detector Finds Database)



English Stamped Sheet Metal Clasp from Lincolnshire
Late 17th - 18th Century
(North Lincolnshire Museum - Portable Antiquities Scheme)



English Stamped Sheet Metal Clasp
18th Century
(Colchester Treasure Hunting & Metal Detecting)



English Stamped Copper Alloy Sheet Metal Clasp from Essex
18th Century
(UK Detector Finds Database)



English Stamped Sheet Metal Clasp from North Yorkshire
Late 17th - 18th Century
(York Museums Trust - Portable Antiquities Scheme)



English Stamped Copper Alloy Sheet Metal Clasp from Suffolk
18th Century
(UK Detector Finds Database)



English Stamped Copper Sheet Metal Clasp from Warwickshire
by "TS" 18th - Early 19th Century
(UK Detector Finds Database)



English Stamped Copper Sheet Metal Clasp from Somerset
18th - Early 19th Century
(UK Detector Finds Database)



English Stamped Copper Sheet Metal Clasp from Kinross - Shire
18th - Early 19th Century
(UK Detector Finds Database)



English Stamped Sheet Metal Clasps
18th Century
(Colchester Treasure Hunting & Metal Detecting)



English Stamped Copper Alloy Sheet Metal Clasp from Warwickshire
18th - Early 19th Century
(UK Detector Finds Database)



English Stamped Sheet Metal Clasps
18th Century
(Colchester Treasure Hunting & Metal Detecting)



English Stamped Copper Sheet Metal Clasp from Northhamptonshire
18th - Early 19th Century
(UK Detector Finds Database)



English Stamped Sheet Metal Clasp from Cambridgeshire
Late 17th - 18th Century
(Portable Antiquities Scheme)



English Stamped Sheet Metal Clasps
18th Century
(Colchester Treasure Hunting & Metal Detecting)



English Stamped Copper Alloy Sheet Metal Clasp from Suffolk
18th - Early 19th Century
(UK Detector Finds Database)



English Stamped Copper Alloy Sheet Metal Clasp from Gloucestershire
18th - Early 19th Century
(UK Detector Finds Database)



English Die - Stamped Copper Alloy Sheet Metal Clasp from Cheshire
18th Century
(UK Detector Finds Database)



English Stamped Sheet Metal Clasp
Late 17th - 18th Century
(The British Museum)

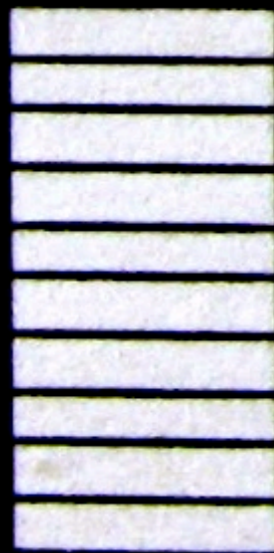


English Stamped Sheet Metal Clasp from North Yorkshire
Late 17th - 18th Century
(York Museums Trust - Portable Antiquities Scheme)



English Stamped Sheet Metal Clasp
Late 17th - 18th Century
(Sussex Archaeological Society - Portable Antiquities Scheme)

cm



English Stamped Sheet Metal Clasp from Hampshire
18th - Early 19th Century
(Winchester Museum Service - Portable Antiquities Scheme)



English Stamped Sheet Metal Clasp from the West Midlands
18th - Early 19th Century
(Winchester Museum Service - Portable Antiquities Scheme)



English Stamped Sheet Metal Clasp from Lincolnshire
Late 17th - 18th Century
(Portable Antiquities Scheme)



English Stamped Copper Sheet Metal Clasp from Lincolnshire
18th - Early 19th Century
(UK Detector Finds Database)



English Stamped Copper Sheet Metal Clasp from South Yorkshire
18th - Early 19th Century
(UK Detector Finds Database)



English Stamped Copper Sheet Metal Clasp from Northamptonshire
18th - Early 19th Century
(UK Detector Finds Database)



English Stamped Copper Sheet Metal Clasp from Northamptonshire
18th - Early 19th Century
(UK Detector Finds Database)



English Stamped Copper Sheet Metal Clasp from Shropshire
18th - Early 19th Century
(UK Detector Finds Database)



English Stamped Copper Sheet Metal Clasp from Devon
18th - Early 19th Century
(UK Detector Finds Database)



English Stamped Sheet Metal Clasp from East Riding of Yorkshire
Late 17th - 18th Century
(North Lincolnshire Museum - Portable Antiquities Scheme)



English Stamped Sheet Metal Clasp from Buckinghamshire
Late 17th - 18th Century
(Colchester & Ipswich Museum Service - Portable Antiquities Scheme)



English Stamped Sheet Metal Clasp from East Riding of Yorkshire
Late 17th - 18th Century
(North Lincolnshire Museum - Portable Antiquities Scheme)



English Stamped Copper Sheet Metal Clasp from Essex
18th - Early 19th Century
(UK Detector Finds Database)



English Stamped Copper Sheet Metal Clasp from Hertfordshire
18th - Early 19th Century
(UK Detector Finds Database)



English Stamped Copper Sheet Metal Clasp from Cumbria
18th - Early 19th Century
(UK Detector Finds Database)



English Stamped Copper Sheet Metal Clasp from Cambridgeshire
18th - Early 19th Century
(UK Detector Finds Database)



English Stamped Sheet Metal Clasp with a Crown & "GR" (?) from North Yorkshire
Likely Representative for King George III Late 18th Century
(York Museums Trust - Portable Antiquities Scheme)



English Stamped Sheet Metal Clasp with a Crown & "GR" from North Yorkshire
Likely Representative for King George III Late 18th Century
(York Museums Trust - Portable Antiquities Scheme)



English Stamped Sheet Metal Clasp with a Crown & "GR" from North Yorkshire
Likely Representative for King George III Late 18th Century
(UK Detector Finds Database)



English Stamped Sheet Metal Clasp with a Crown & "GR" from North Yorkshire
Likely Representative for King George III Late 18th Century
(Lawrence Newman)



English Stamped Sheet Metal Clasp with a Crown & "GR" from North Yorkshire
Likely Representative for King George III Late 18th Century
(Lawrence Newman)



English Stamped Copper Alloy Sheet Metal Clasp with a Crown & "GR" from North Yorkshire
18th Century
(UK Detector Finds Database)



English Stamped Sheet Metal Clasp with a Crown & "GR" from Cambridgeshire
Likely Representative for King George III Late 18th Century
(UK Detector Finds Database)



English Stamped Sheet Metal Clasp Marked "LIBERTY TO AMERICA"

c. 1775

(Private Collection)



English Stamped Sheet Metal Clasp Marked "LIBERTY TO AMERICA"

c. 1775

(Private Collection)



English Stamped Sheet Metal Clasp Marked "LIBERTY TO AMERICA"

c. 1775

(Portable Antiques Scheme)



English Stamped Sheet Metal Clasp Marked "GOD SAVE THE KING"
Likely Representative for King George III Late 18th Century
(Private Collection)



English Stamped Sheet Metal Clasp from North Lincolnshire
Late 17th - 18th Century
(North Lincolnshire Museum - Portable Antiquities Scheme)



English Stamped Copper Sheet Metal Clasp with Attached Stud from Suffolk

c. 1660 - 1720

(UK Detector Finds Database)



English Stamped Copper Sheet Metal Clasp with Attached Stud from Suffolk
c. 1660 - 1720
(UK Detector Finds Database)



English Metal Clasp with Attached Stud from Herefordshire
Late 17th - 18th Century
(Birmingham Museum and Art Gallery - Portable Antiquities Scheme)

Acknowledgements

The material contained within these slideshows is presented for educational purposes only. The 18th Century Material Culture Resource Center does not personally own any of the items depicted herein and is indebted to the countless museums, libraries, and private collectors who willingly share their collections with the public through the internet. Every attempt has been made to credit these organizations and individuals for their contributions as best as possible.

If there is a question you have regarding a particular item featured within a presentation, please contact the 18th Century Material Culture Resource Center and we will try to answer your inquiry as best as possible. If for any reason you feel there is any item that should not be presented here, or if there is an error in any listing, or if you know the source for any item whose credit is unknown, please inform us and we will make sure your concern is addressed as soon as possible.

Thank you!

- The 18th Century Material Culture Resource Center