

18th Century Material Culture

Bed Covers Part II

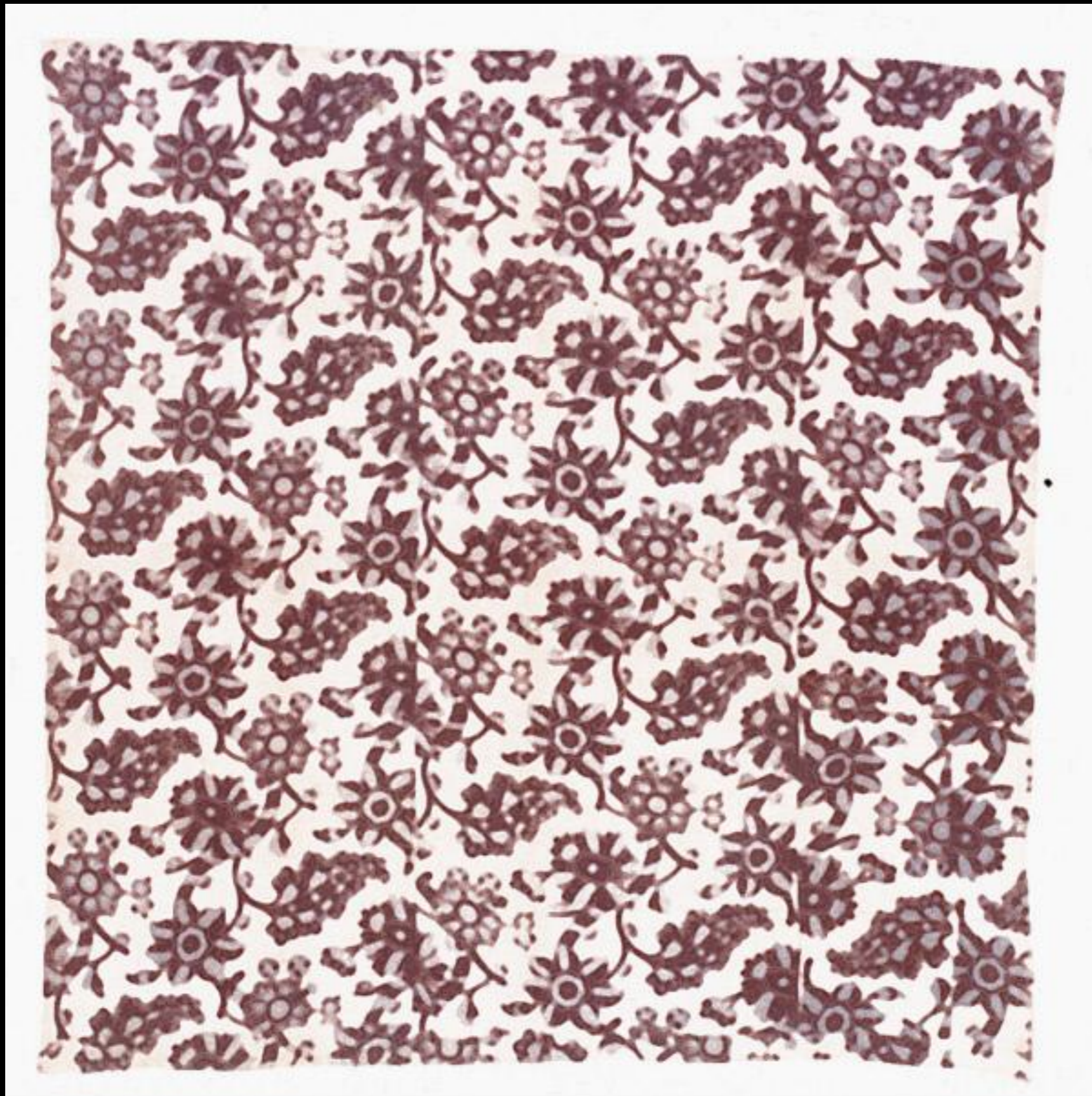


Crewel - Work Quilts

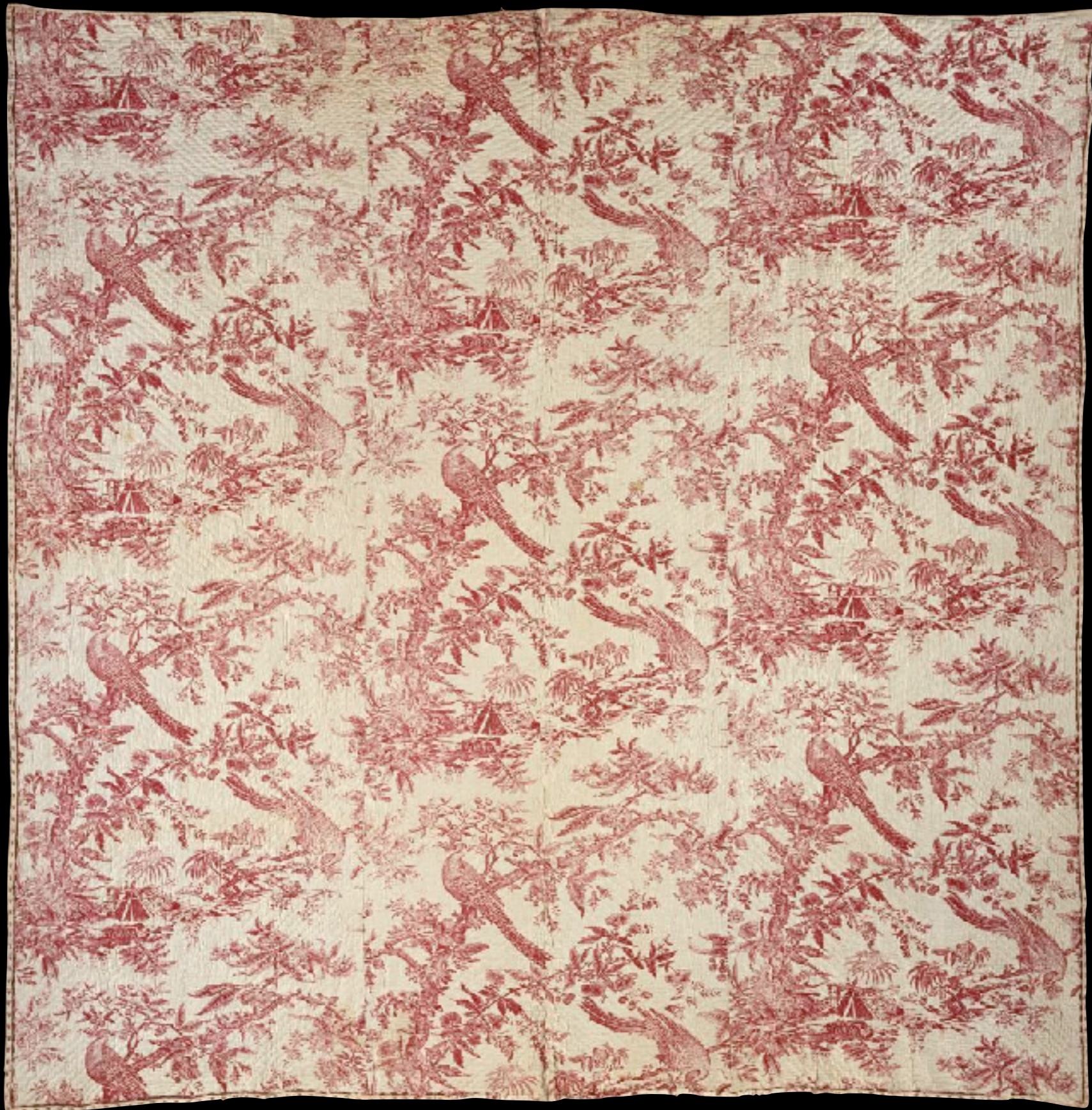


Crewel - Work Quilt
18th Century
(Skinner Auction House)

Block - Printed Quilts



American, Possibly Connecticut, Cotton Indigo Resist Dyed Quilt
c. 1750 - 1765
(Colonial Williamsburg)



English Copperplate Print Cotton & Linen Quilt
c. 1765 - 1775
(Colonial Williamsburg)



American Bordered Quilt of English Block Printed Indigo Resist Dyed Cloth
c. 1750 - 1800
(Winterthur)



Detail: American Bordered Quilt of English Block Printed Indigo Resist Dyed Cloth
c. 1750 - 1800
(Winterthur)



English or American Block Printed Indigo Resist Dyed Quilt with New York Provenance (FRONT)

c. 1780 - 1800
(Winterthur)



English or American Block Printed Indigo Resist Dyed Quilt with New York Provenance (BACK)

c. 1780 - 1800

(Winterthur)



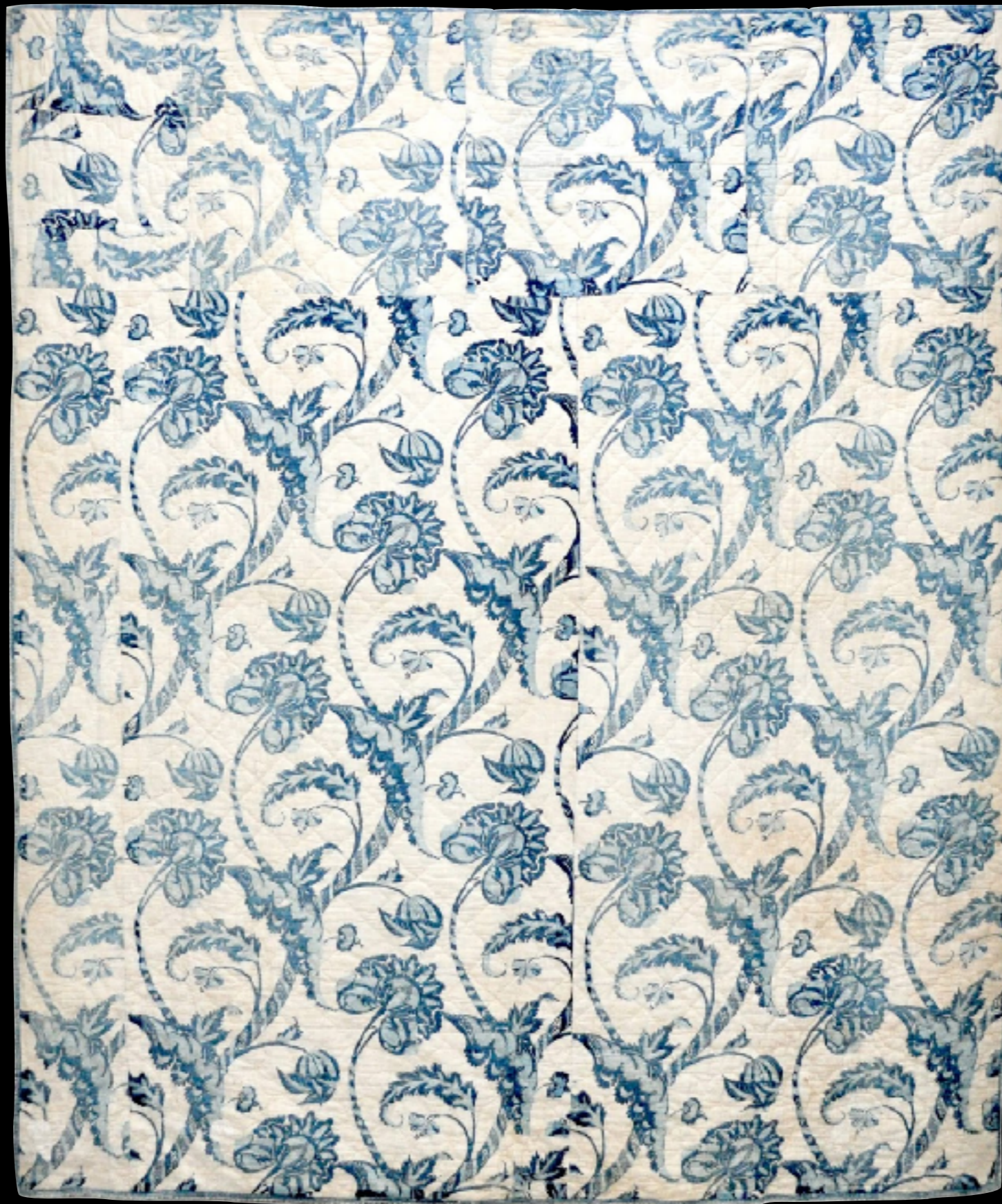
Front & Back Details: English or American Block Printed Indigo Resist Dyed Quilt with New York Provenance
c. 1780 - 1800
(Winterthur)



English or American Block Printed Indigo Resist Dyed Quilt & Bed Hangings with New York Provenance
c. 1780 - 1800
(Winterthur)



American Indigo Resist Dyed Quilt from Connecticut
c. 1760 - 1780
(Los Angeles County Museum of Art)



American, Likely New York, Indigo Resist Dyed Quilt
c. 1760 - 1800
(Private Collection - willywonkaquilts.blogspot.com)



Detail: American, Likely New York, Indigo Resist Dyed Quilt
c. 1760 - 1800
(Private Collection - willywonkaquilts.blogspot.com)



American Resist Dyed Cotton and Wool Quilt
18th Century
(Lawton Mull)



American Resist Dyed Cotton and Wool Quilt
18th Century
(Lawton Mull)



French, Likely Rouen, Block Printed Indigo Resist Dyed Quilt

c. 1780

(Private Collection - willywonkaquilts.blogspot.com)



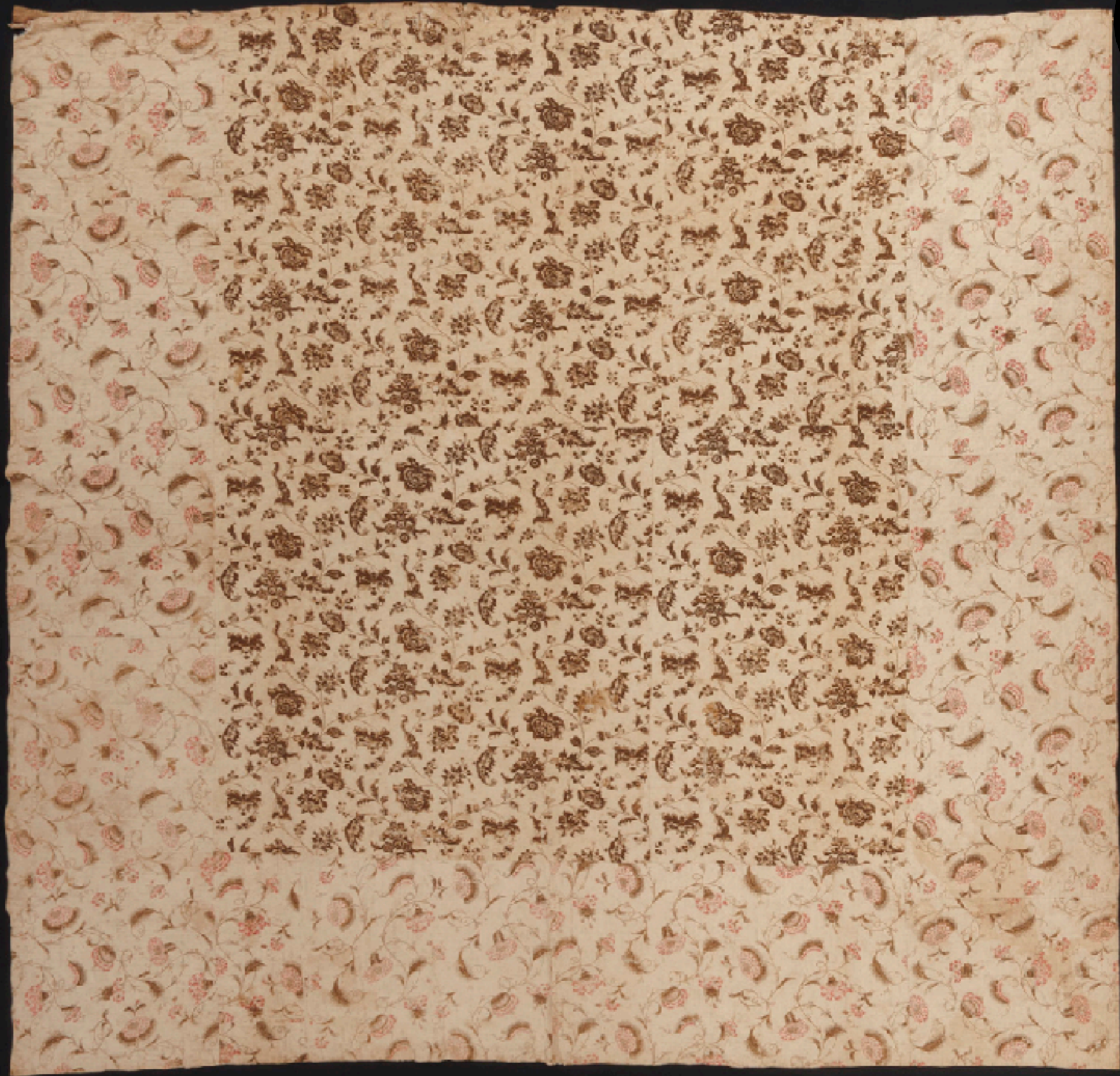
Detail: French, Likely Rouen, Block Printed Indigo Resist Dyed Quilt
c. 1780
(Private Collection - willywonkaquilts.blogspot.com)



Reverse Detail: French, Likely Rouen, Block Printed Indigo Resist Dyed Quilt

c. 1780

(Private Collection - willywonkaquilts.blogspot.com)



English Block Printed Plain Woven Mardant Syle Cotton Quilt (FRONT)

c. 1730 - 1800

(Private Collection)



English Block Printed Plain Woven Mardant Syle Cotton Quilt (BACK DETAIL)

c. 1730 - 1800

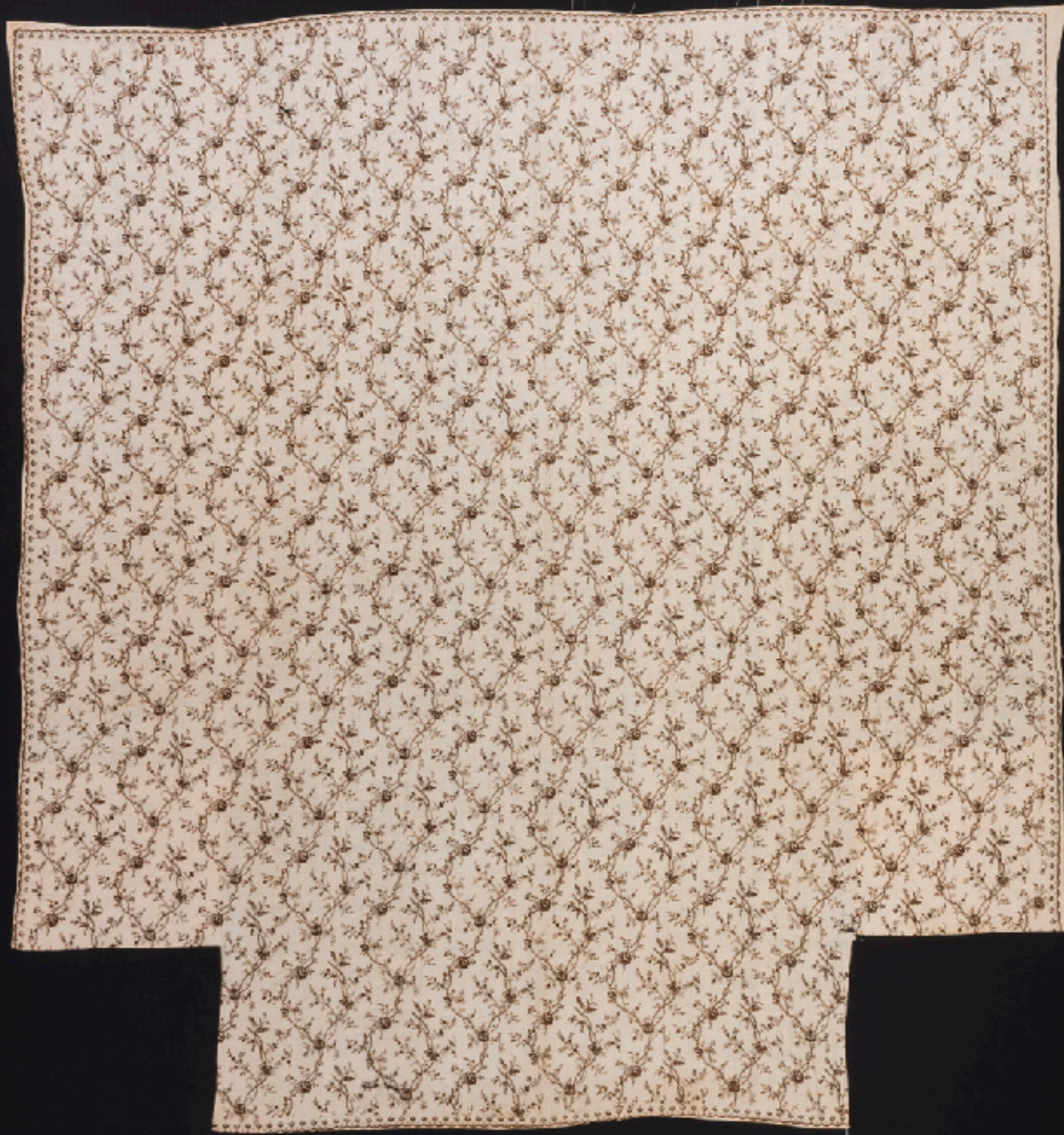
(Private Collection)



Floral Block - Printed Cotton Quilt
18th Century
(Skinner Auction House)



Dutch Embroidered Cotton Quilt with Silk Border
18th Century
(Los Angeles County Museum of Art)



New England Block Printed Cotton Counterpane for a 4 Post Bed
c. 1780 - 1800
(Winterthur)



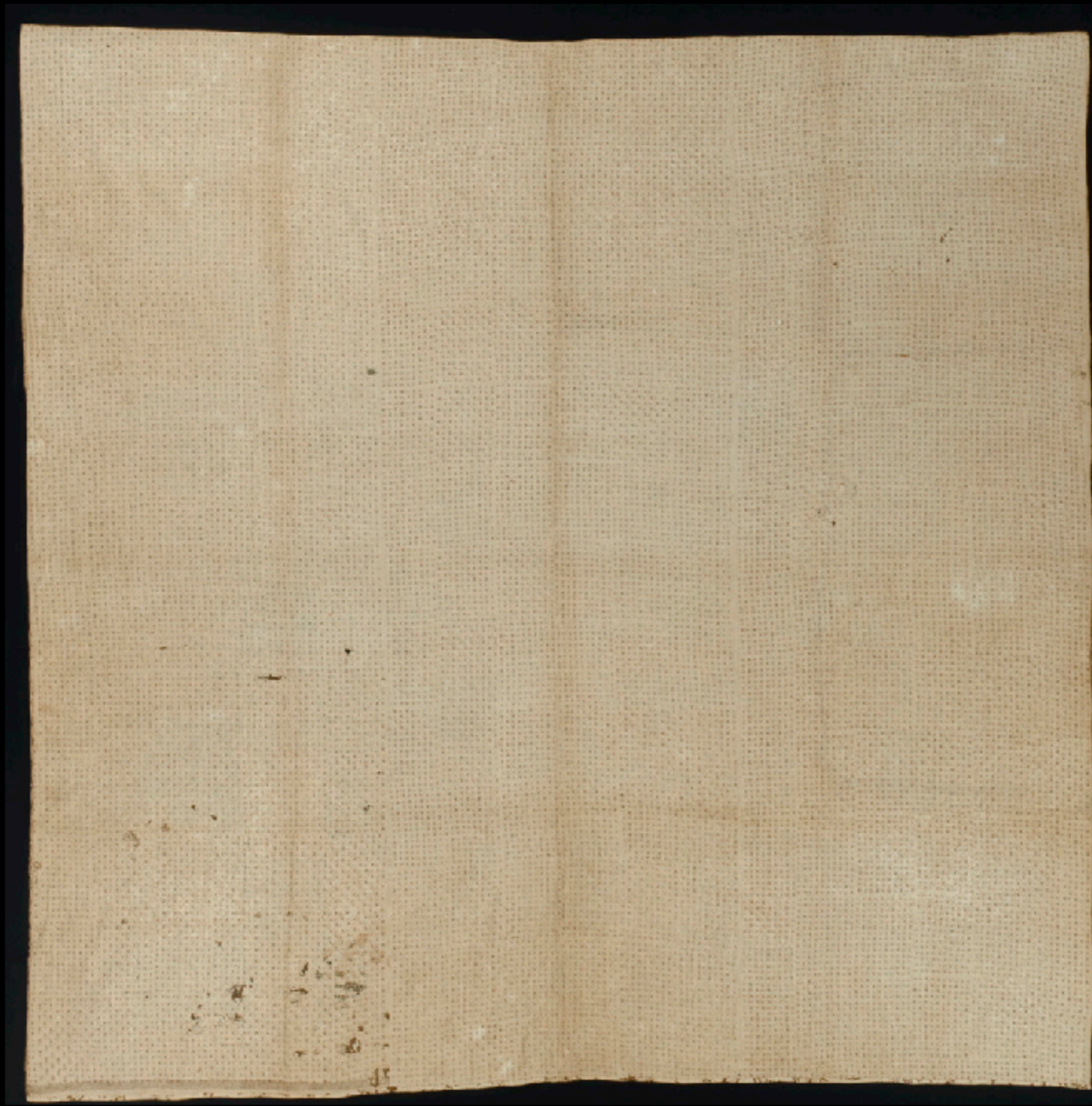
New England Block Printed Cotton Counterpane
c. 1780 - 1800
(Winterthur)



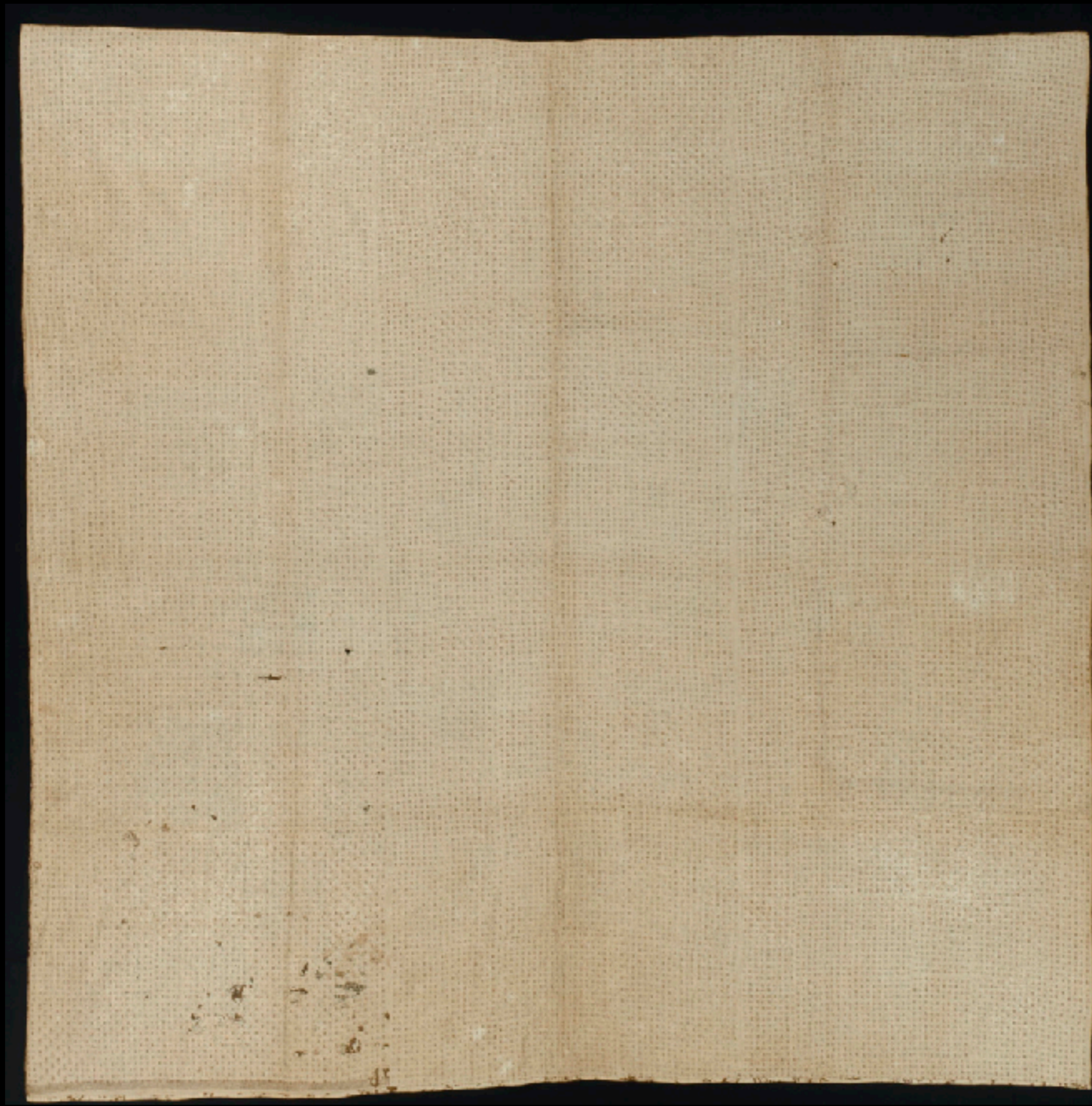
English or American Block - Printed Cotton Quilt of English Fabric c. 1770 (FRONT)
c. 1780 - 1820
(Winterthur)



Detail: English or American Block - Printed Cotton Quilt of English Fabric c. 1770 (FRONT)
c. 1780 - 1820
(Winterthur)



English or American Block - Printed Cotton Quilt of English Fabric c. 1770 (BACK)
c. 1780 - 1820
(Winterthur)



English or American Block - Printed Cotton Quilt of English Fabric c. 1770 (BACK)
c. 1780 - 1820
(Winterthur)



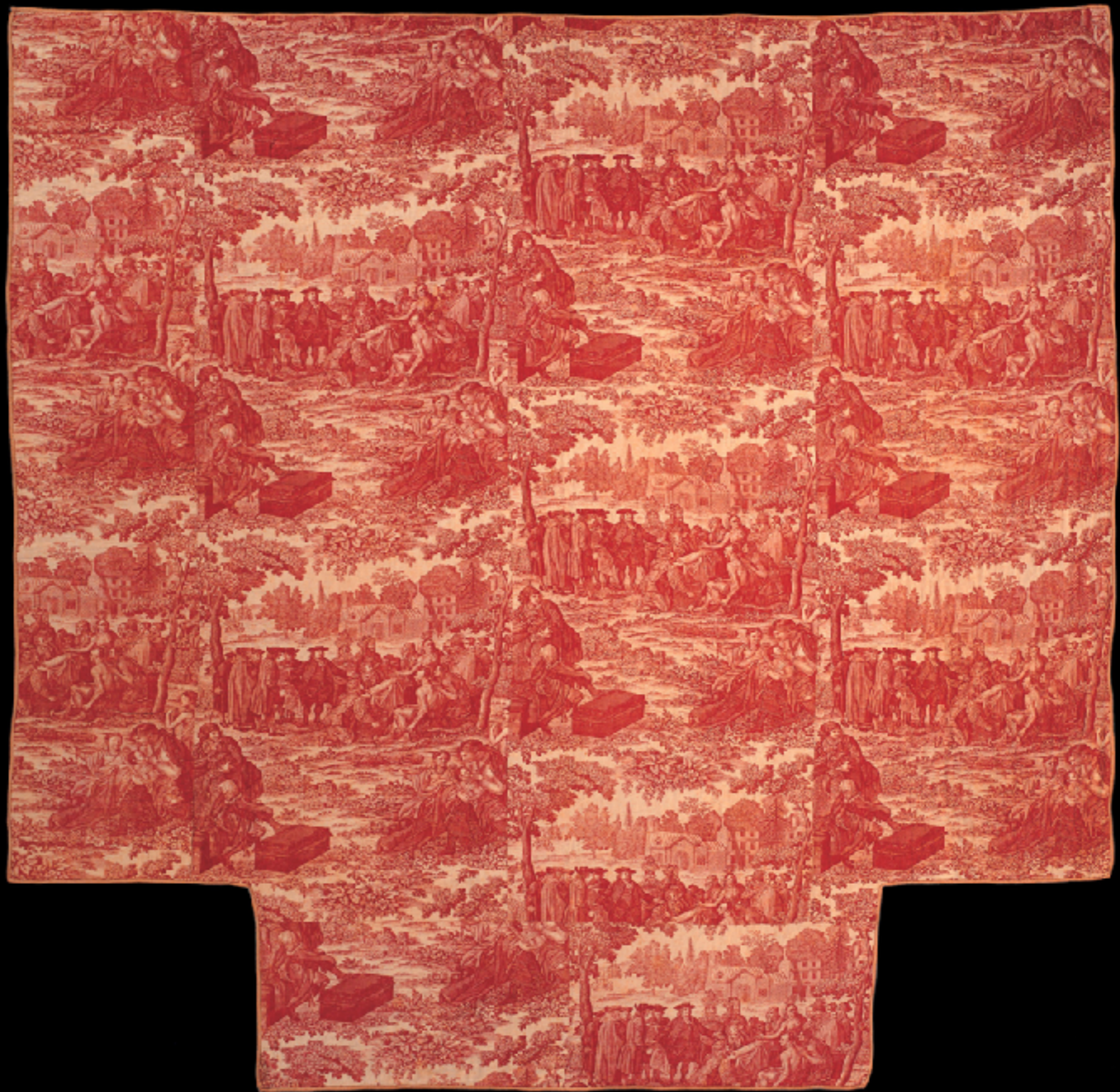
Detail: English or American Block - Printed Cotton Quilt of English Fabric c. 1770 (BACK)
c. 1780 - 1820
(Winterthur)



Kingston, New York, Cotton Quilt Belonging to Rachel Hardenberg, Married in 1781 to Captain Matthew Jansen
c. 1780
(Michigan State University Museum)



French Block - Printed Cotton Sprig Design Quilt
1785
(Colonial Williamsburg)



American Whole Cloth English Copper Plate Printed Cotton Quilt Depicting William Penn's Treaty with the Indians
c. 1780 - 1800
(Winterthur)



Detail: American Whole Cloth English Copper Plate Printed Cotton Quilt Depicting William Penn's Treaty with the Indians
c. 1780 - 1800
(Winterthur)



French Whole Cloth Copper Plate Printed Cotton Quilt Depicting "La Liberte Americaine"
by J. P. Meillier et Cie c. 1785
(Winterthur)



English or American Plain Woven, Plate Printed Cotton Quilt
Depicting the Apotheosis of Benjamin Franklin and George Washington
c. 1780 - 1800
(Winterthur)



English or American Plain Woven, Plate Printed Cotton Quilt
Depicting the Apotheosis of Benjamin Franklin and George Washington
c. 1780 - 1800
(Winterthur)



Front Detail: English or American Plain Woven, Plate Printed Cotton Quilt
Depicting the Apotheosis of Benjamin Franklin and George Washington
c. 1780 - 1800
(Winterthur)



Back Detail: English or American Plain Woven, Plate Printed Cotton Quilt
Depicting the Apotheosis of Benjamin Franklin and George Washington
c. 1780 - 1800
(Winterthur)



French or American Whole Cloth Copper Plate Printed Cotton Quilt from Jouy-En-Josas

c. 1785
(Winterthur)



European Quilt of Printed Cottons
c. 1740 - 1800
(Colonial Williamsburg)

Embroidered Quilts & Coverlets



English Silk Embroidered & Quilted Counterpane
c. 1690 - 1720
(Colonial Williamsburg)



English Silk Embroidered & Quilted Counterpane
c. 1690 - 1720
(Colonial Williamsburg)



English Embroidered Linen Bed Cover

1703
(Victoria & Albert)



English Silk Embroidered Cotton Tabby Quilt
by "Miss Dikes" c. 1700 - 1725
(Colonial Williamsburg)



English Silk & Metal Thread Embroidered Linen Coverlet

1715
(Victoria & Albert)



American White Cotton & Linen Twill (Fustian) Child's Coverlet
Embroidered by Mary Fifield Adams (1694 - 1748) of Massachusetts. 1st Quarter 18th Century
(Museum of Fine Arts, Boston)



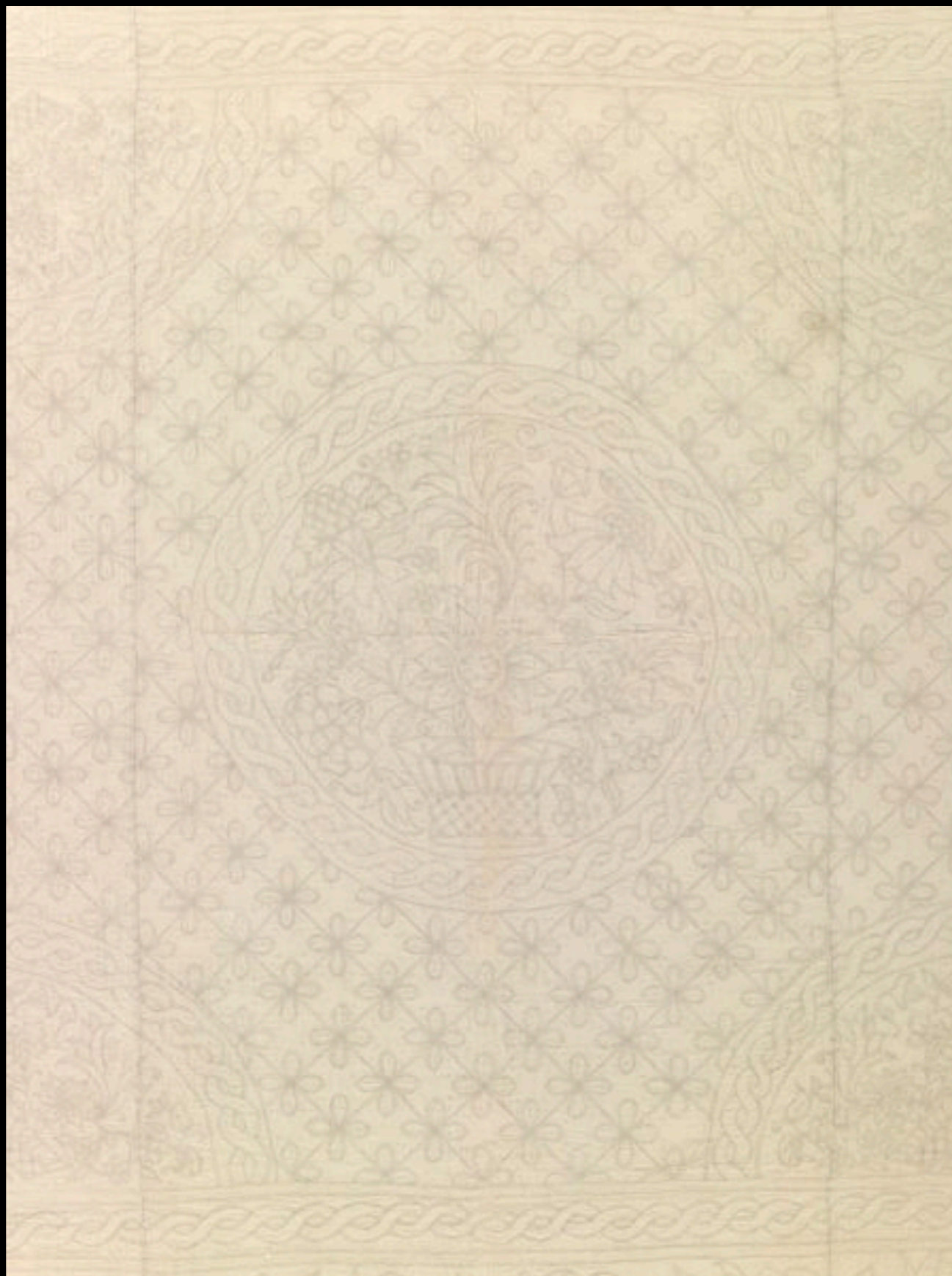
English Cotton, Linen and Silk Embroidered Quilt
Early 18th Century
(Museum of Fine Arts, Boston)



English Cotton Coverlet Embroidered with Silk and Metal Thread
Early 18th Century
(Metropolitan Museum of Art)



British or American Linen Coverlet Embroidered with Wool
c. 1720
(Metropolitan Museum of Art)



English Embroidered and Cord Quilted Linen Quilt

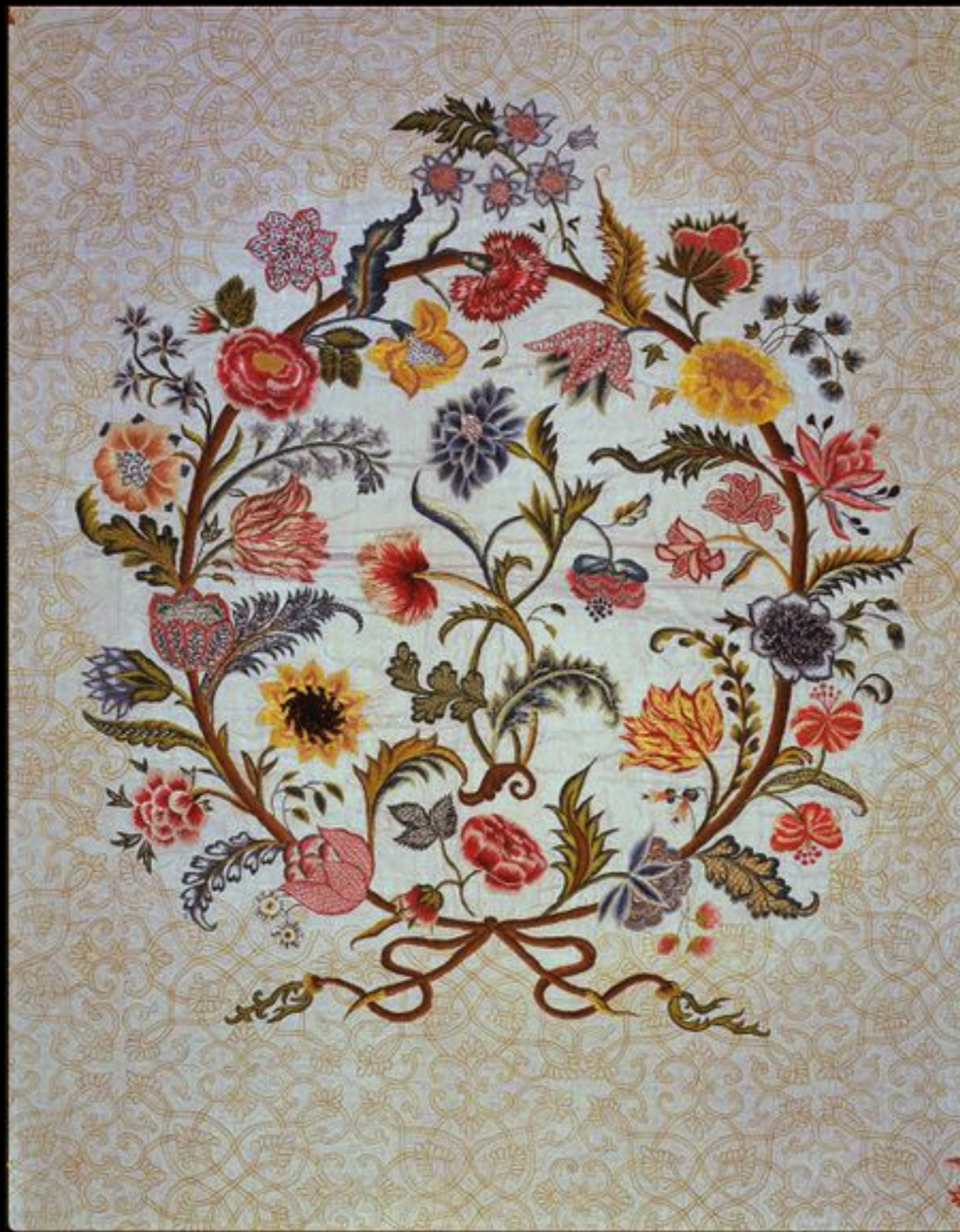
c. 1720 - 1750
(Victoria & Albert)



English Embroidered and Stuffed Linen Whitework Quilt
c. 1720
(Metropolitan Museum of Art)



English Embroidered Linen and Silk Bed Cover
c. 1725 - 1750
(Victoria & Albert)



English Silk Embroidered Linen Bed Cover

c. 1725 - 1750
(Victoria & Albert)



American Worsted Wood and Crewel Coverlet Attributed to Elizabeth Swan of Roxbury (1741 - 1817)
c. 1751 - 1778
(Connecticut Historical Society)



American Worsted Wood and Crewel Coverlet Attributed to Elizabeth Swan of Roxbury (1741 - 1817)
c. 1751 - 1778
(Connecticut Historical Society)



American Embroidered Coverlet
by Ruth Culver Coleman c. 1760 - 1785
(Metropolitan Museum of Art)



American Linen & Cotton Coverlet with Wool Embroidery from Connecticut
by Mary Breed of Stonington, Connecticut c. 1770
(Metropolitan Museum of Art)



American Embroidered Quilt
c. 1775
(Metropolitan Museum of Art)



American Cotton and Linen Embroidered Quilt from Baltimore, Maryland
"D. W. 1783"
(D.A.R. Museum)



American Embroidered Coverlet from New England
18th Century
(Skinner Auctions)

Overshot Coverlets



Oldest known overshoot
coverlet to be dated in
the weave -- 1771 --

one of many coverlets, in all structures, pledged to the new
National Museum of the American Coverlet, Bedford, PA

American Overshot Coverlet, Likely from Pennsylvania

"I.P. 1771"

(National Museum of the American Coverlet, Bedford, Pennsylvania)



American Overshot Coverlet from New York or a Mid-Atlantic State
"A R 1773"
(Winterthur)



American Overshot Coverlet from New York or a Mid-Atlantic State
"A R 1773"
(Winterthur)



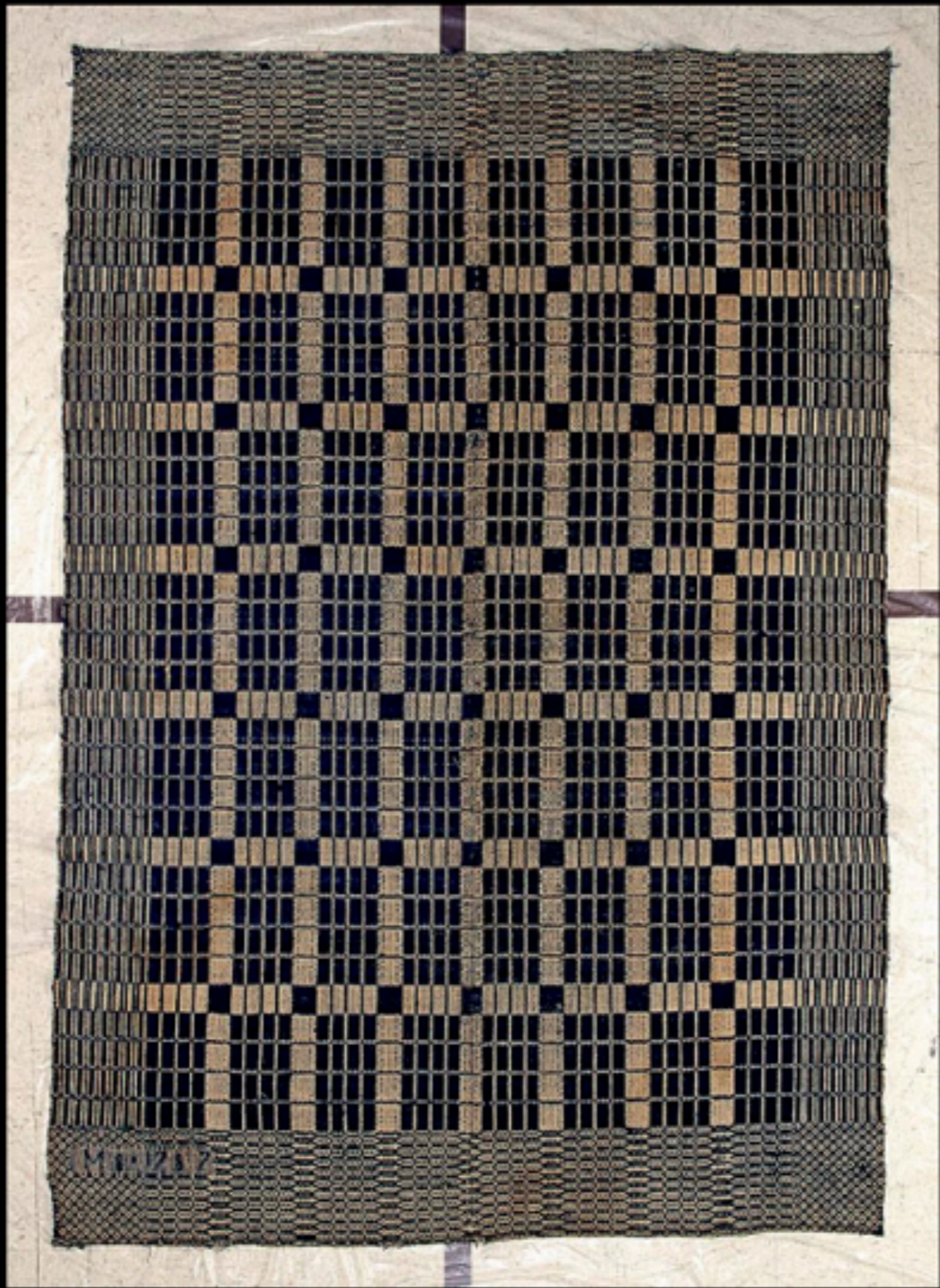
American Overshot Coverlet Fragment from Pennsylvania or a Mid-Atlantic State
c. 1780 - 1820
(Winterthur)



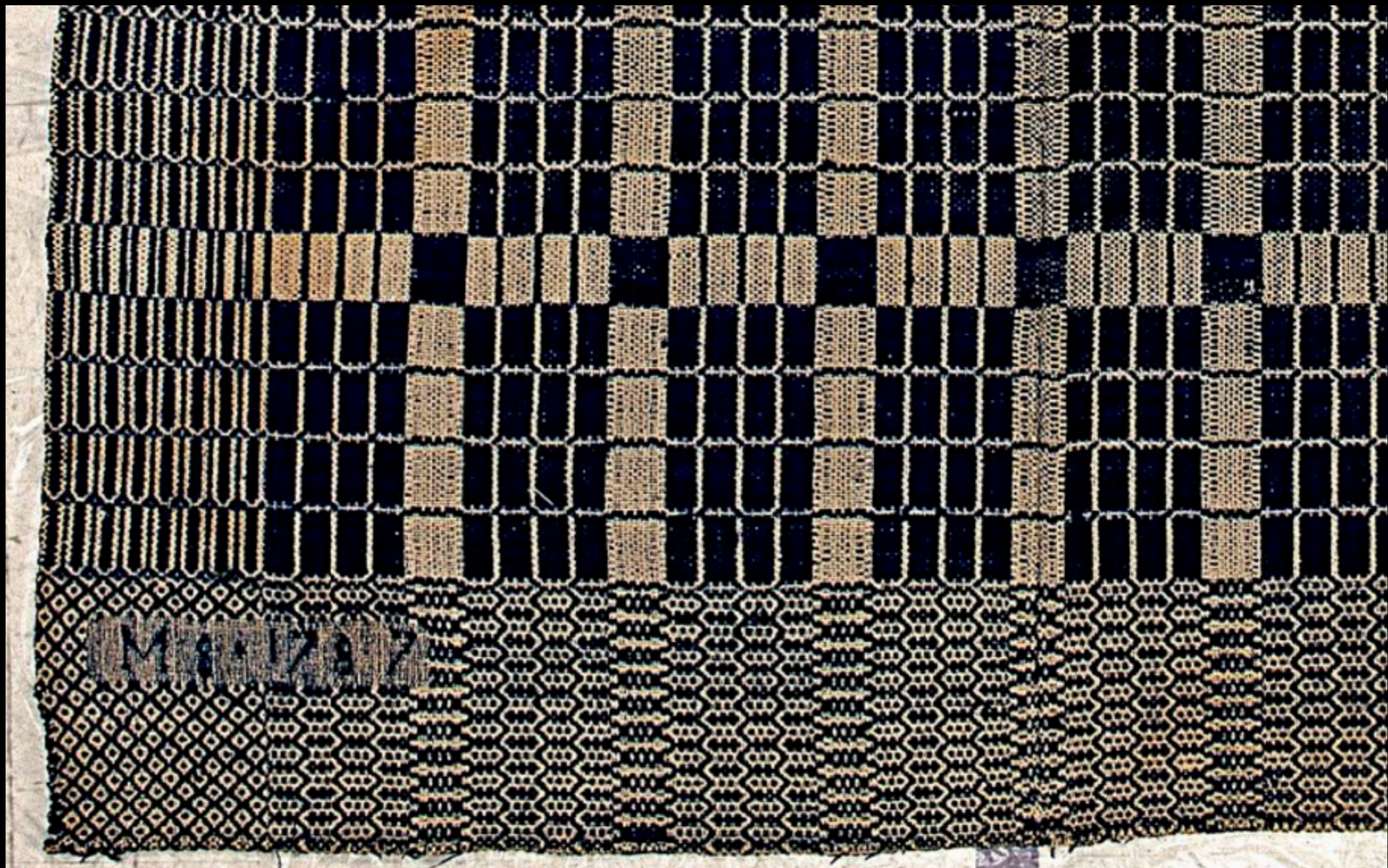
American Overshot Coverlet of Linen, Cotton & Wool
by "EM 1784"
(Smithsonian - National Museum of American History)



American Overshot Coverlet of Linen, Cotton & Wool
by "EM 1784"
(Smithsonian - National Museum of American History)



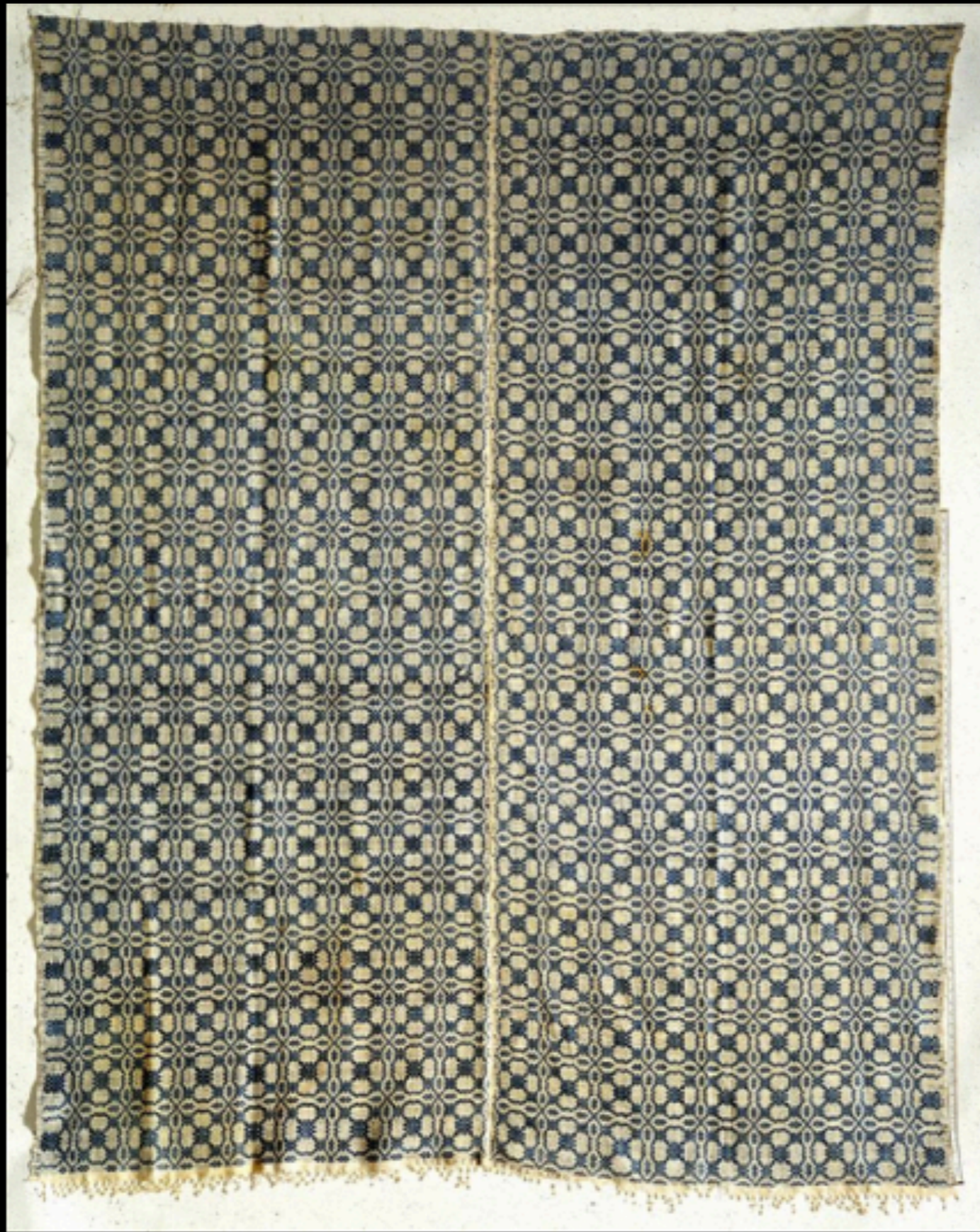
American Overshot Coverlet of Cotton, Linen, & Wool
by "M S 1787"
(Smithsonian - National Museum of American History)



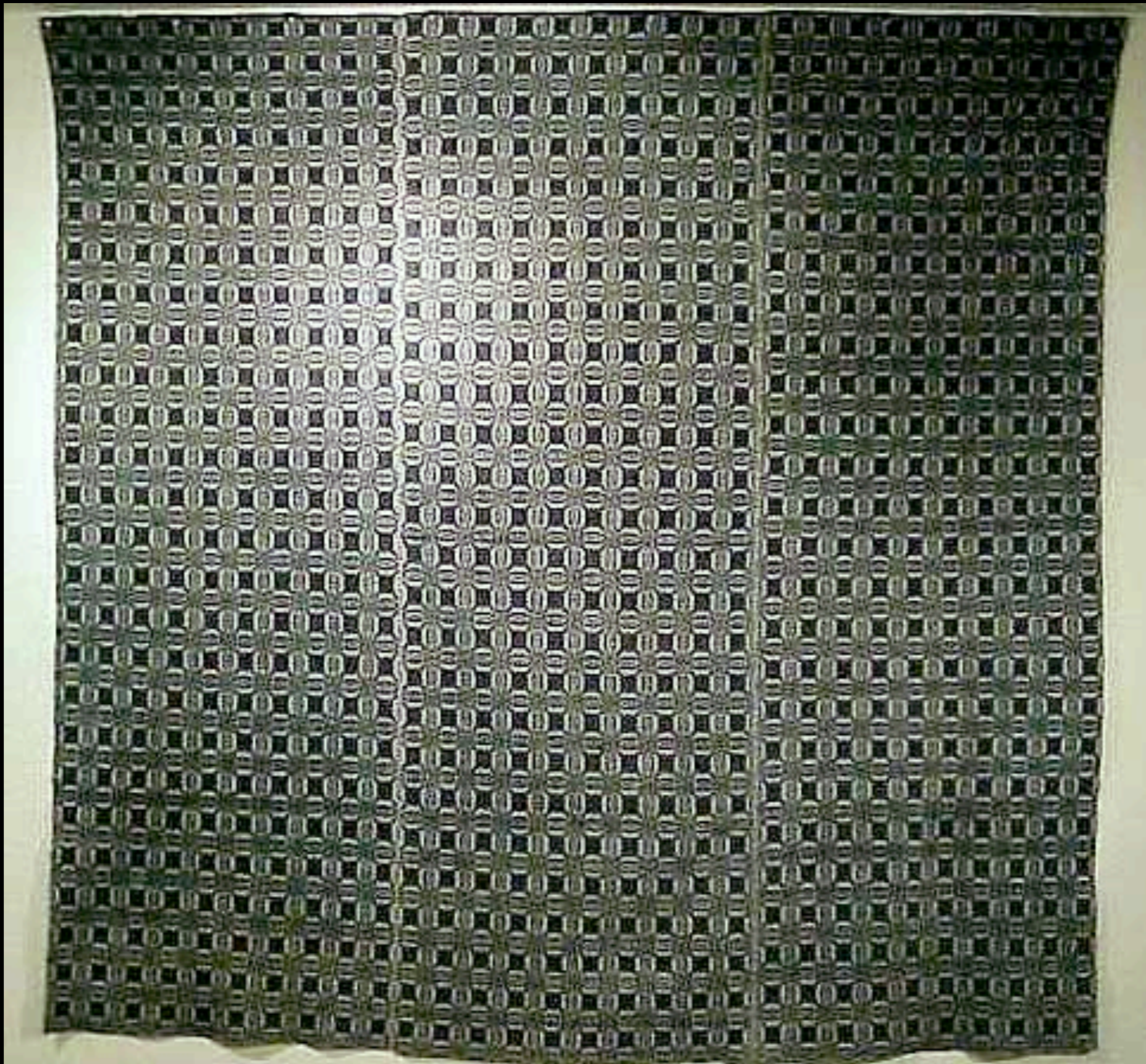
American Overshot Coverlet of Cotton, Linen, & Wool
by "M S 1787"
(Smithsonian - National Museum of American History)



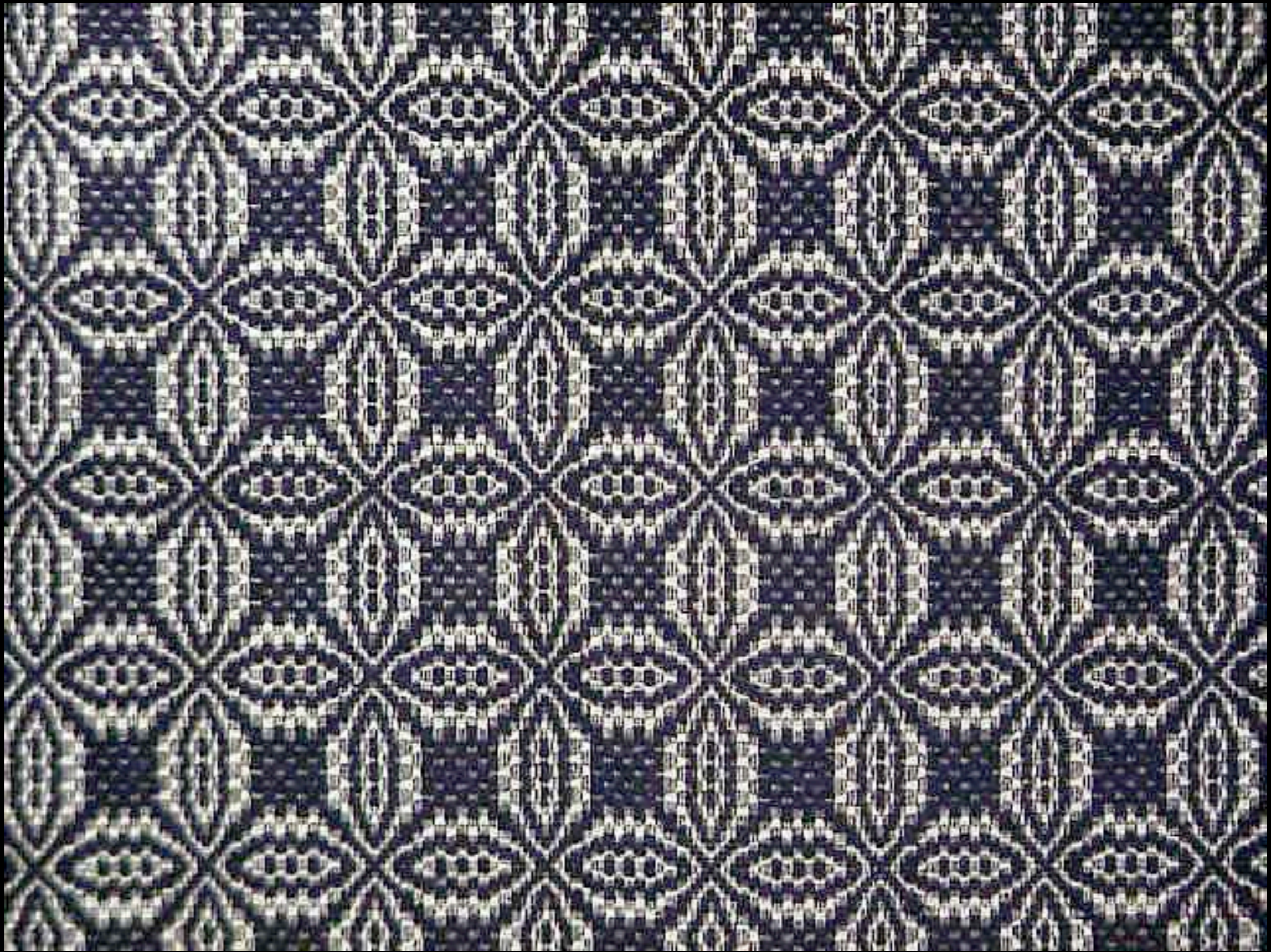
American Overshot Coverlet with "Pine Tree" Motif from Pennsylvania
Made by a Member of the Brown Family of Emilie, Pennsylvania 1789
(Smithsonian - National Museum of American History)



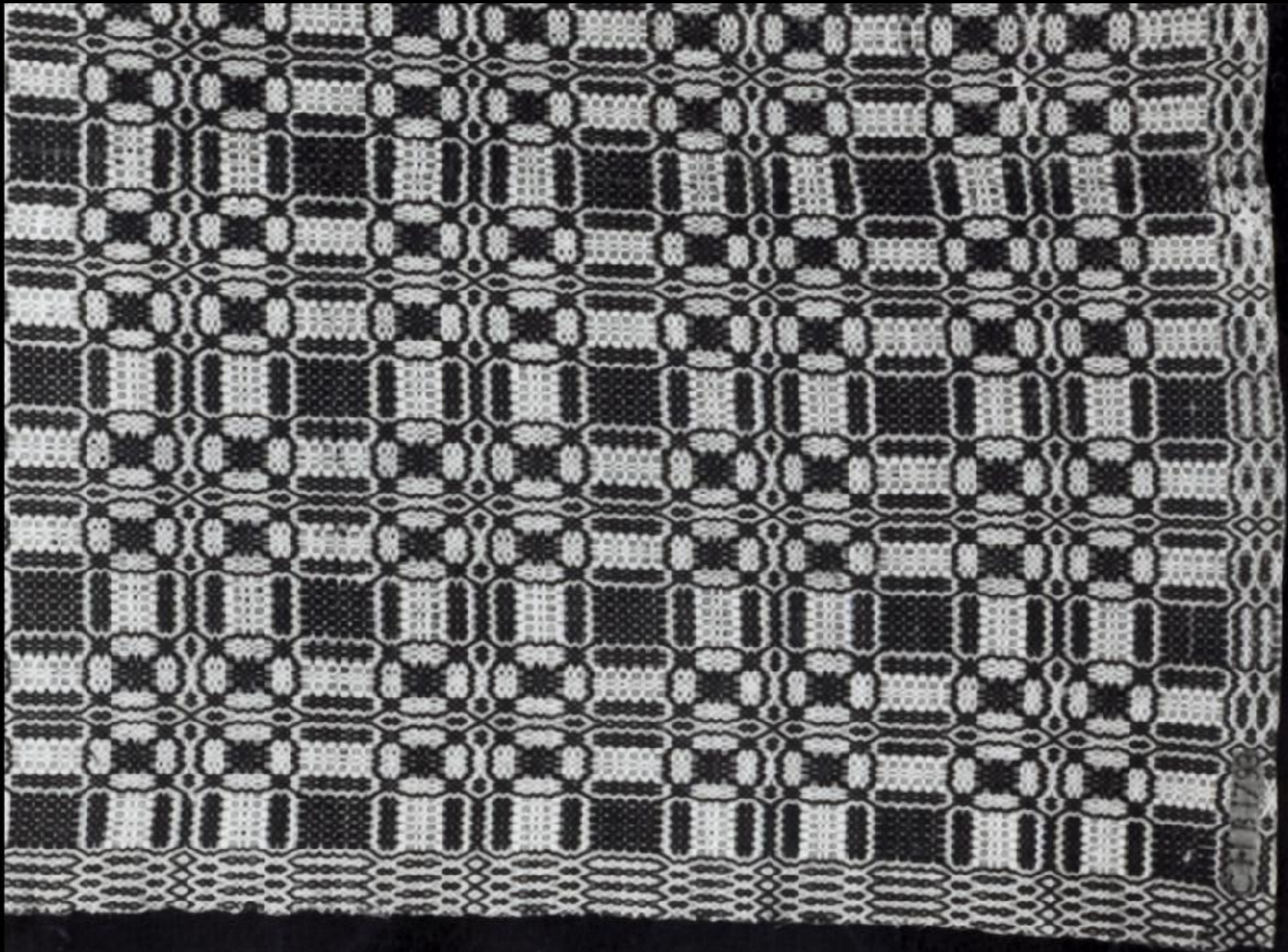
American Linen Overshot Coverlet from New York
by Elizabeth Deuel of Saratoga, New York 1790
(Smithsonian - National Museum of American History)



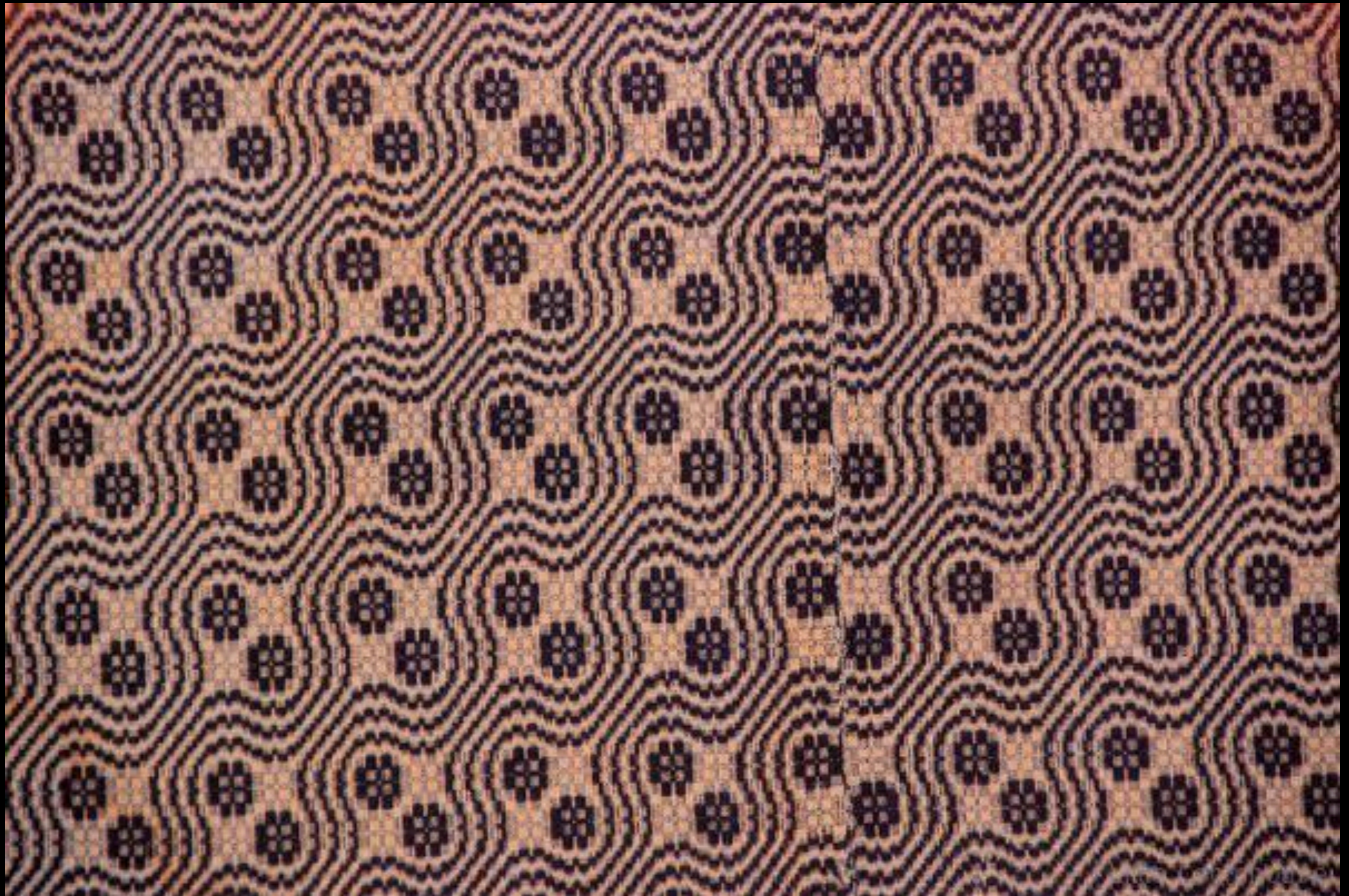
American Overshot Coverlet
Late 18th - Early 19th Century
(Oriental & Navajo Rug Company)



*American Overshot Coverlet
Late 18th - Early 19th Century
(Oriental & Navajo Rug Company)*



American Overshot Coverlet Owned by Cornelia Hollen Beck of New York
"C H B 1793"
(Colonial Williamsburg)



American "Cat Tracks" Pattern Coverlet from Virginia
Reported to Have Been Used by the Harmon Family of Virginia in 1759
(Harmon Family / Chris Utley)



American Cotton & Wool Overshot Coverlet from Kingston, New Hampshire

1740

(American Textile History Museum, Worcester, Massachusetts)

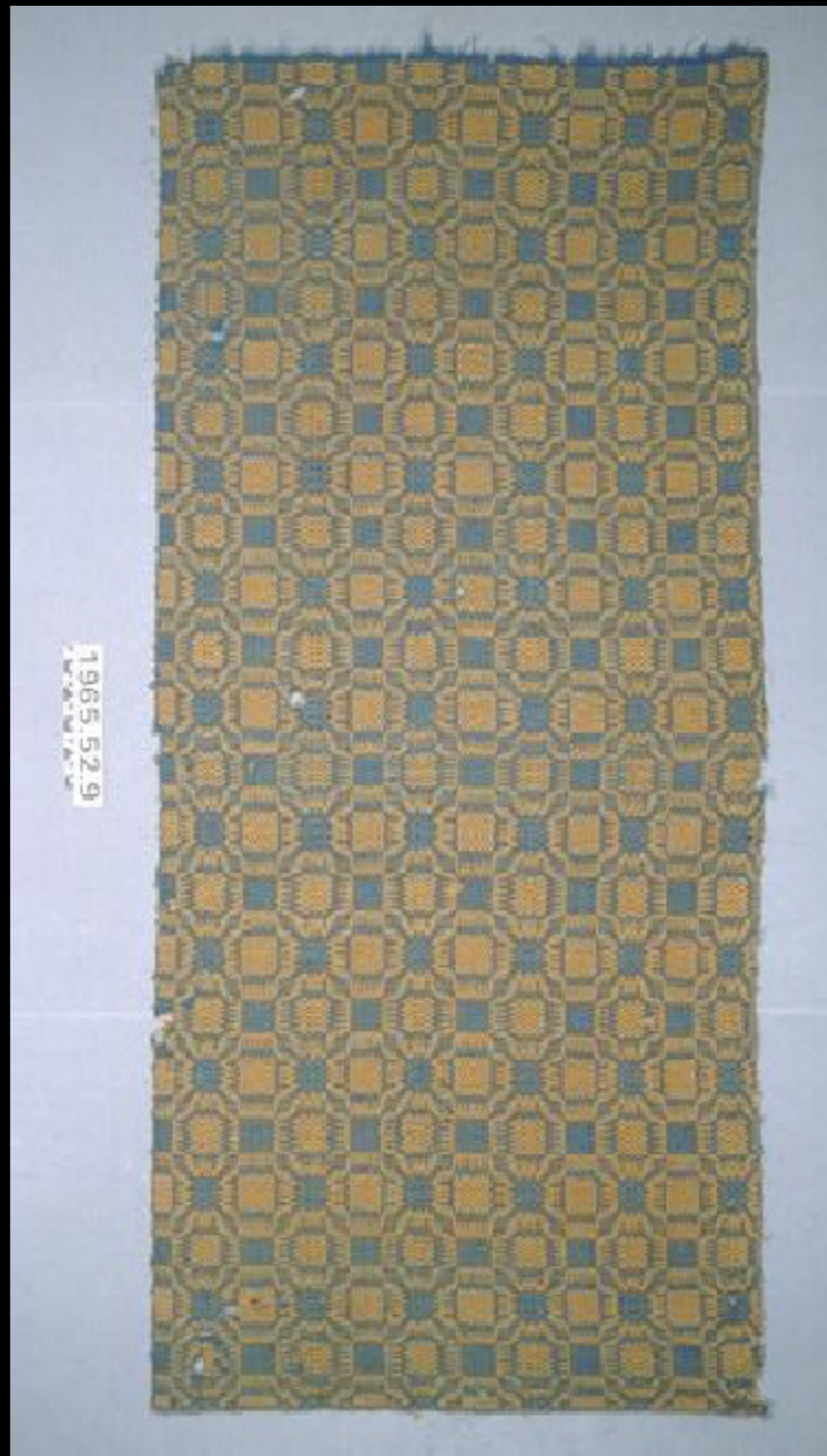


1978.4

American Linen & Wool Overshot Coverlet
Late 18th - Early 19th Century
(American Textile History Museum, Worcester, Massachusetts)

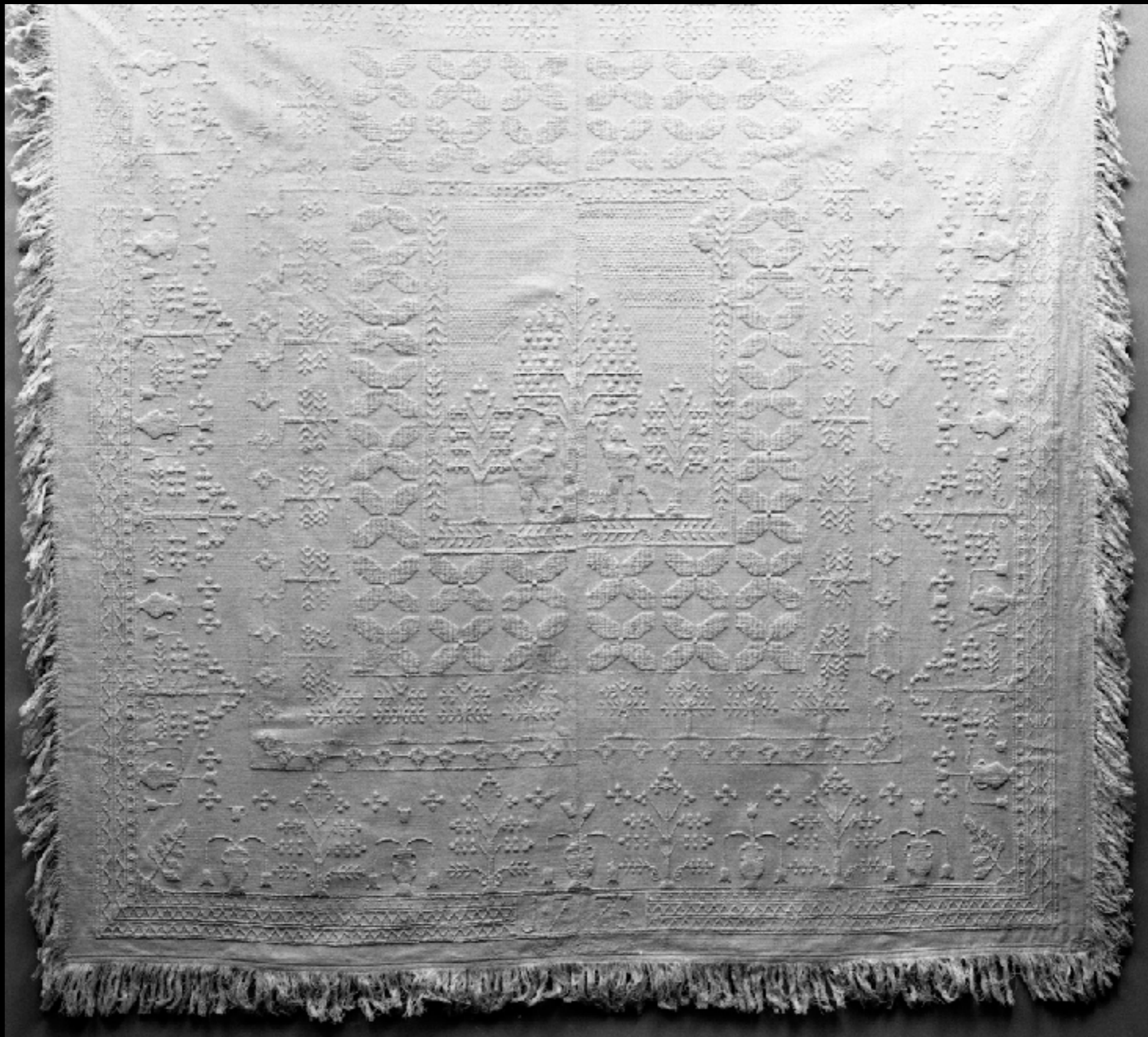


American Linen & Wool Overshot Coverlet
Late 18th - Mid 19th Century
(American Textile History Museum, Worcester, Massachusetts)



American Wool Overshot Coverlet from Plymouth, Massachusetts
Late 18th - Late 19th Century
(American Textile History Museum, Worcester, Massachusetts)

Cotton Coverlets



American Cotton Coverlet from Pennsylvania

1773
(Winterthur)



American Cotton Coverlet from Pennsylvania

1773
(Winterthur)



American Cotton Coverlet from Pennsylvania

1773
(Winterthur)



American Cotton Coverlet from Pennsylvania

1773
(Winterthur)



American Cotton Coverlet from Pennsylvania
1773
(Winterthur)



American Cotton Coverlet from Pennsylvania

*1773
(Winterthur)*

Wool Coverlets



American Linen & Wool Twill Center Seam Coverlet
Early to Mid 18th Century
(American Textile History Museum, Worcester, Massachusetts)



1980.16.29

*American Linen & Wool Twill Center Seam Coverlet
Early to Mid 18th Century
(American Textile History Museum, Worcester, Massachusetts)*



American Wool Twill Center Seam Coverlet from Pennsylvania
Late 18th to Early / Mid 19th Century
(American Textile History Museum, Worcester, Massachusetts)



1980.16.8

American Wool Twill Center Seam Coverlet from Pennsylvania
Late 18th to Early / Mid 19th Century
(American Textile History Museum, Worcester, Massachusetts)



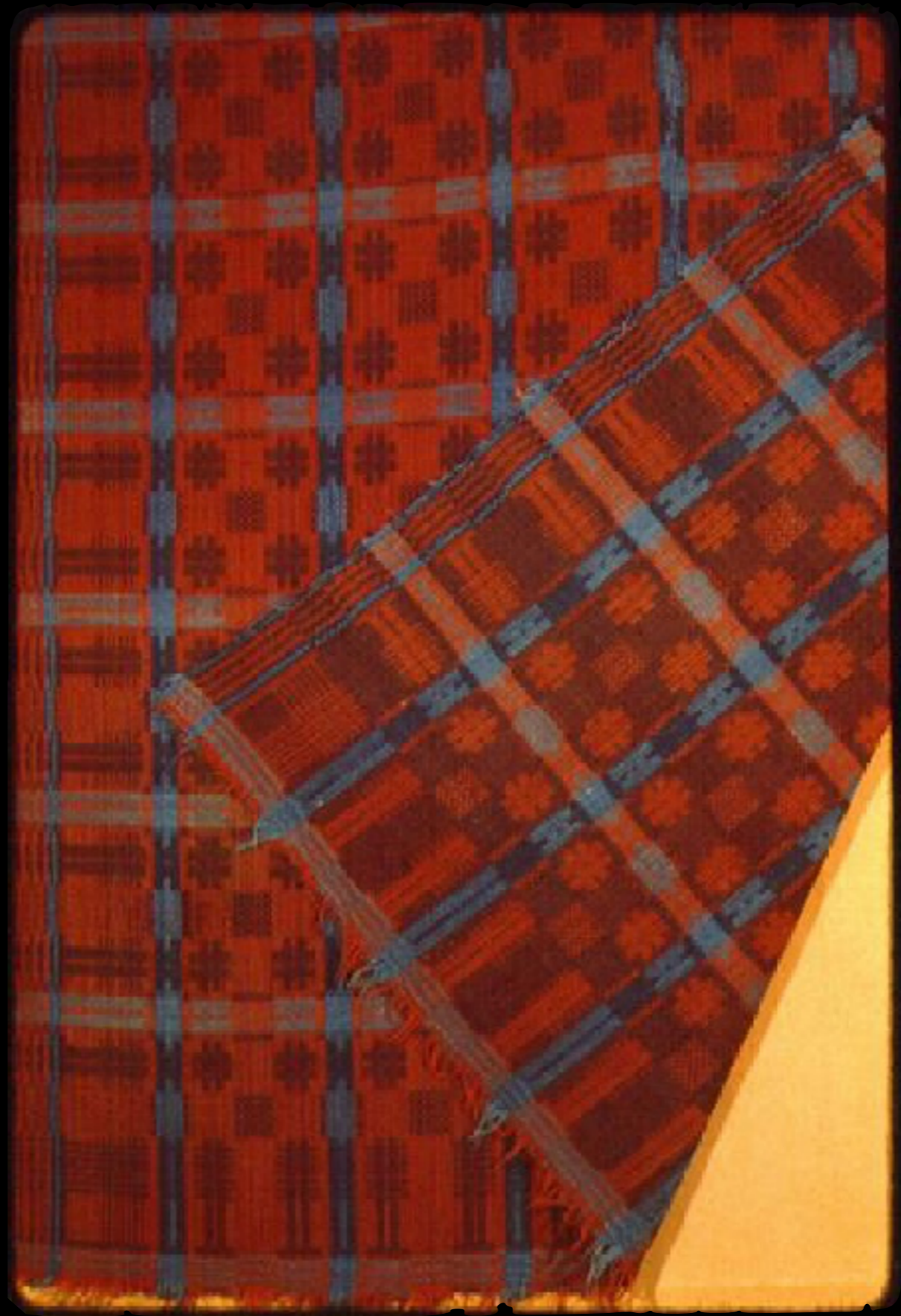
American Wool Twill Center Seam Coverlet from Pennsylvania
Late 18th to Early / Mid 19th Century
(American Textile History Museum, Worcester, Massachusetts)



American Linen & Wool Twill Center Seam Coverlet from Pennsylvania
Late 18th to Early / Mid 19th Century
(American Textile History Museum, Worcester, Massachusetts)



American Twill Center Seam Coverlet from Pennsylvania
Late 18th to Early / Mid 19th Century
(American Textile History Museum, Worcester, Massachusetts)



American Twill Center Seam Coverlet from Pennsylvania
Late 18th to Early / Mid 19th Century
(American Textile History Museum, Worcester, Massachusetts)

Monk's - Belt Coverlets



*“Monk’s Belt” Coverlet of Wool (Found inside a c. 1790 Quilted Counterpane where it was used as Batting (Stuffing))
c. 1770 - 1784
(Smithsonian - National Museum of American History)*

East India Co.

Exports



Indian Quilt Made for the European Market

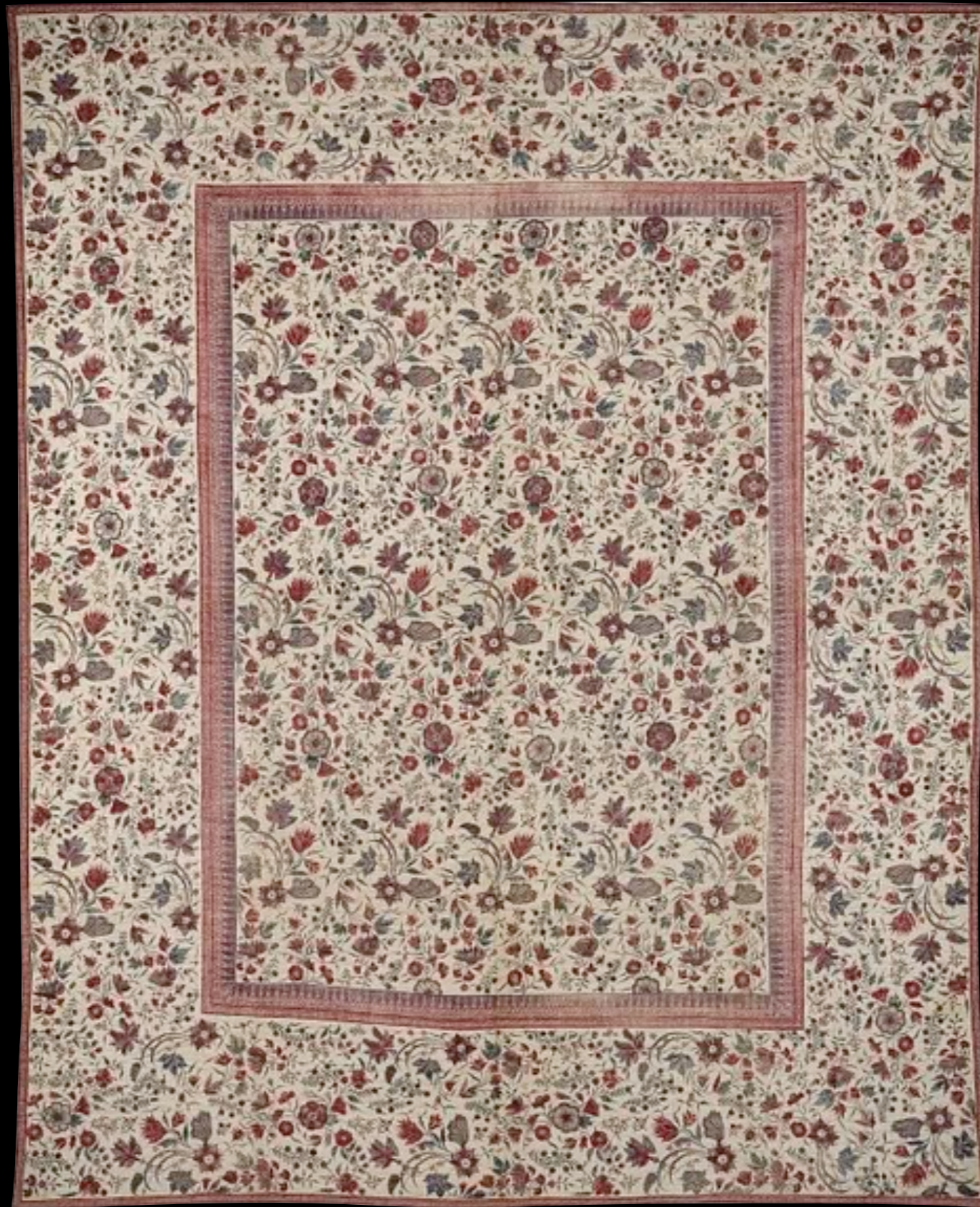
c. 1700 - 1725

(Metropolitan Museum of Art)



Indian (Coromandel Coast) Mordant - Dyed with Yellow Over - Painting Cotton "Palampore" with Silk Lining

c. 1700 - 1725
(Victoria & Albert)



Indian (Coromandel Coast) Chintz Bed Cover

c. 1725 - 1750
(Victoria & Albert)



Indian Silk and Metal Thread Thread Embroidered Cotton Quilt
Mid 18th Century
(Victoria & Albert)



Indian Quilted Tree of Life "Palampore" of Cotton & Linen
c. 1700 - 1800
(Winterthur)



Detail: Indian Quilted Tree of Life "Palampore" of Cotton & Linen
c. 1700 - 1800
(Winterthur)



Indian Quilted Tree of Life "Palampore" of Cotton & Linen with Border
c. 1770 - 1790
(Colonial Williamsburg)



Indian Chintz "Palampore" Made for the Dutch Market
c. 1720
(Christie's)



Counterpane or "Palampore" of Indian Chintz Cotton & Embroidered Silk for the European Market
c. 1725 - 1760
(Colonial Williamsburg)



Counterpane or "Palampore" of Indian Chintz Cotton for the European Market
c. 1760
(Colonial Williamsburg)



Counterpane or "Palampore" of Mordant - Painted and Resist - Dyed Indian Chintz Cotton for the European Market
c. 1750 - 1770
(Colonial Williamsburg)



Counterpane Made from Imported Cotton Chintz from India

c. 1750

(Stratford Hall)

Chinese Exports



Chinese Silk Coverlet for the European Market
17th Century
(Metropolitan Museum of Art)



Counterpane of Painted Chinese Silk (Chinese Export) with Central Medallion in the Style of Jean Erain
c. 1700 - 1760
(Colonial Williamsburg)



Counterpane of Painted Chinese Silk (Chinese Export)

c. 1770 - 1790

(Colonial Williamsburg)

Acknowledgements

The material contained within these slideshows is presented for educational purposes only. The 18th Century Material Culture Resource Center does not personally own any of the items depicted herein and is indebted to the countless museums, libraries, and private collectors who willingly share their collections with the public through the internet. Every attempt has been made to credit these organizations and individuals for their contributions as best as possible.

If there is a question you have regarding a particular item featured within a presentation, please contact the 18th Century Material Culture Resource Center and we will try to answer your inquiry as best as possible. If for any reason you feel there is any item that should not be presented here, or if there is an error in any listing, or if you know the source for any item whose credit is unknown, please inform us and we will make sure your concern is addressed as soon as possible.

Thank you!

- The 18th Century Material Culture Resource Center