

18th Century Material Culture

Earthenware Teapots



English Lead Glazed
Earthenware
Teapots



English Lead Glazed Earthenware / "Tortoise Shell" Teapot from Staffordshire
c. 1755 - 1765
(Northeast Auctions)



English Lead Glazed Earthenware / "Tortoise Shell" Teapot from Staffordshire

c. 1770

(Private Collection)



English Lead Glazed Earthenware / "Tortoise Shell" Teapot from Staffordshire

c. 1755 - 1770
(Skinner)



SKINNER

English Lead Glazed Earthenware / "Tortoise Shell" Teapot from Staffordshire

c. 1755 - 1770
(Skinner)



English Lead Glazed Earthenware / "Tortoise Shell" Teapot from Staffordshire
Possibly by Thomas Whieldon c. 1765
(John Howard)



English Lead Glazed Earthenware / "Tortoise Shell" Teapot from Staffordshire
c. 1755 - 1765
(Northeast Auctions)



English Lead Glazed Earthenware / "Tortoise Shell" Teapot from Staffordshire
c. 1765 - 1770
(Private Collection)



SKINNER

English Lead Glazed Earthenware / "Tortoise Shell" Teapot from Staffordshire

c. 1755 - 1770
(Skinner)



English Lead Glazed Earthenware / "Tortoise Shell" Teapot from Staffordshire
c. 1755 - 1765
(Northeast Auctions)



English Lead Glazed Earthenware / "Tortoise Shell" Teapot from Staffordshire

c. 1751

(Victoria & Albert)



English Lead Glazed Earthenware / "Tortoise Shell" Teapot from Staffordshire

c. 1751

(Victoria & Albert)



English Lead Glazed Earthenware / "Tortoise Shell" Teapot from Staffordshire
c. 1755 - 1765
(John Howard)



English Lead Glazed Earthenware / Creamware Teapot from Staffordshire
Whieldon Factory c. 1740 - 1760
(Museum of Fine Arts, Boston)



English Lead Glazed Earthenware / "Tortoise Shell" Teapot from Staffordshire
c. 1765 - 1770
(Private Collection)



English Lead Glazed Earthenware / "Tortoise Shell" Teapot from Staffordshire
by Thomas Whieldon c. 1760
(Victoria & Albert)



English Lead Glazed Earthenware Teapot from Staffordshire

c. 1765

(Victoria & Albert)



English Lead Glazed Earthenware Teapot from Staffordshire
c. 1765
(Museum of Fine Arts, Boston)



English Lead Glazed Earthenware Teapot from Staffordshire
c. 1760 - 1765
(Victoria & Albert)



English Lead Glazed Earthenware Teapot from Staffordshire

c. 1750 - 1760

(Victoria & Albert)



English Lead Glazed Earthenware Teapot from Staffordshire

c. 1770

(Victoria & Albert)



English Lead Glazed Earthenware / Creamware / Agateware with Silver Teapot from Staffordshire
c. 1740 - 1760
(Museum of Fine Arts, Boston)



English Lead Glazed Earthenware / Creamware / Agateware Teapot from Staffordshire
c. 1740 - 1760
(Victoria & Albert)



English Lead Glazed Earthenware / Creamware / Agateware Teapot from Staffordshire
Possibly Made by the Whieldon Factory c. 1740
(Private Collection)



English Lead Glazed Earthenware / Creamware / Agateware Teapot from Staffordshire
c. 1740 - 1760
(Fitzwilliam Museum)



English Lead Glazed Earthenware / Creamware / Agateware Teapot from Staffordshire
c. 1740 - 1760
(Victoria & Albert)



English Lead Glazed Earthenware / Creamware / Agateware Teapot from Staffordshire
c. 1750 - 1760
(Historic Deerfield)



English Lead Glazed Earthenware / Creamware / Agateware Teapot from Staffordshire

c. 1750 - 1765

(Victoria & Albert)



English Lead Glazed Earthenware / Creamware / Agateware Teapot from Staffordshire

c. 1740 - 1780
(Victoria & Albert)



English Lead Glazed Earthenware / Creamware / Agateware Teapot from Staffordshire

c. 1750

(Leo Kaplan, Ltd.)



English Lead Glazed Earthenware / Creamware / Agateware Teapot from Staffordshire

c. 1750

(Private Collection)



English Lead Glazed Earthenware / Creamware / Agateware Teapot from Staffordshire
c. 1750
(Private Collection)



English Lead Glazed Earthenware / Creamware / Agateware Teapot from Staffordshire

c. 1750

(Private Collection)



English Lead Glazed Earthenware / Creamware / Agateware Teapot from Staffordshire

c. 1750

(Leo Kaplan, Ltd.)



English Lead Glazed Earthenware / Creamware / Agateware Teapot from Staffordshire

c. 1745 - 1750

(Troy D. Chappell Collection)



English Lead Glazed Earthenware / Creamware / Agateware Teapot from Staffordshire

c. 1745 - 1750
(Chipstone)



English Lead Glazed Earthenware Teapot from Staffordshire
c. 1760 - 1765
(Victoria & Albert)



English Lead Glazed Earthenware Teapot from Staffordshire
c. 1760 - 1765
(Victoria & Albert)



English Lead Glazed Earthenware Teapot from Staffordshire
c. 1760
(John Howard)



English Lead Glazed Earthenware / Creamware Teapot
by William Greatbatch c. 1770
(John Howard)



English Lead Glazed Earthenware / Creamware Teapot from Burslem
Wedgwood Factory c. 1765 - 1770
(Museum of Fine Arts, Boston)



English Lead Glazed Earthenware / Creamware Teapot from Burslem
Wedgwood Factory c. 1760 - 1765
(Victoria & Albert)



English Lead Glazed Earthenware / Creamware Teapot
c. 1760 - 1765
(Victoria & Albert)



English Lead Glazed Earthenware Chinoiserie Teapot
by Whieldon c. 1770
(Private Collection)



English Lead Glazed Earthenware Teapot from Little Fenton, Staffordshire

c. 1750 - 1770
(Winterthur)



English Lead Glazed Earthenware Teapot from Staffordshire
c. 1755 - 1760
(Chipstone Foundation)



English Lead Glazed Earthenware / Creamware Teapot from Privy 2 of the Three Cranes Tavern Site, Charlestown, Massachusetts
Burned by the British on June 17, 1775 c. 1762 - 1775
(City of Boston Archeology Program)



English Lead Glazed Earthenware / Creamware Teapot from Leeds
c. 1770 - 1780
(Victoria & Albert)



English Lead Glazed Earthenware / Creamware Teapot from Yorkshire

c. 1775

(Victoria & Albert)



English Lead Glazed Earthenware / Creamware Teapot
Cockpit Hill Manufactory c. 1765
(Donald Towner Collection)



English Lead Glazed Earthenware / Creamware Teapot
Leeds Manufactory c. 1780
(Private Collection)



English Lead Glazed Earthenware / Creamware Teapot from Yorkshire
Leeds Manufactory c. 1780
(Private Collection)



English Lead Glazed Earthenware / Creamware Teapot from Staffordshire
Josiah Wedgwood Manufactory c. 1765
(The British Museum)



English Lead Glazed Earthenware / Creamware Teapot from Yorkshire
Leeds c. 1770 - 1780
(Private Collection)



English Lead Glazed Earthenware / Creamware Teapot from Staffordshire

c. 1770 - 1775

(Gary Atkins Antiques)



English Lead Glazed Earthenware / Creamware Teapot

c. 1770

(Private Collection)



English Lead Glazed Earthenware / Creamware Teapot
Rhodes Workshop of Leeds c. 1775
(Private Collection)



English Lead Glazed Earthenware / Creamware Teapot from Staffordshire
by William Greatbatch c. 1770 - 1780
(Garry Atkins Antiques)



English Lead Glazed Earthenware / Creamware Teapot from Staffordshire
by William Greatbatch c. 1770 - 1780
(Garry Atkins Antiques)



English Lead Glazed Earthenware / Creamware Teapot
18th Century
(Private Collection)



English Lead Glazed Earthenware / Creamware Teapot from Yorkshire
Leeds c. 1770 - 1780
(John Howard)



English Lead Glazed Earthenware / Creamware Teapot from Staffordshire
Factory of Wedgwood & Bentley c. 1770
(The British Museum)



English Lead Glazed Earthenware Teapot from Leeds or Yorkshire
c. 1785
(Victoria & Albert)



English Lead Glazed Earthenware Teapot from Staffordshire
c. 1780
(Victoria & Albert)



English Lead Glazed Earthenware Teapot from Staffordshire

c. 1730 - 1740
(Victoria & Albert)



English Lead Glazed Earthenware Teapot from Staffordshire

c. 1730 - 1750
(Winterthur)



English Lead Glazed Earthenware Teapot from Staffordshire

c. 1740

(Victoria & Albert)



English Lead Glazed Earthenware Teapot from Staffordshire

c. 1745

(Victoria & Albert)



English Lead Glazed Earthenware Teapot from Staffordshire

c. 1750

(Victoria & Albert)



English Lead Glazed Earthenware Teapot from Staffordshire

c. 1750

(Victoria & Albert)



English Lead Glazed Earthenware Teapot from Staffordshire

c. 1750 - 1760

(Victoria & Albert)



English Lead Glazed Earthenware Teapot from Staffordshire
by Enoch Booth c. 1745
(Victoria & Albert)



English Lead Glazed Earthenware Teapot from Derbyshire
c. 1765
(Skinner)



English Lead Glazed Earthenware Teapot from Staffordshire
c. 1760
(The British Museum)



English Lead Glazed Earthenware Teapot from Staffordshire

c. 1770

(Colonial Williamsburg Foundation)



English Lead Glazed Earthenware Teapot from Staffordshire
Factory of Thomas Whieldon c. 1760
(The British Museum)



English Lead Glazed Earthenware Teapot from Staffordshire
Factory of Thomas Whieldon c. 1760
(DAR Museum)



English Lead Glazed Earthenware Teapot from Staffordshire

c. 1775
(Skinner)



English Lead Glazed Earthenware Teapot from Staffordshire
c. 1760
(Victoria & Albert)



English Lead Glazed Earthenware Teapot from Little Fenton / Staffordshire
by Thomas Whieldon c. 1754
(The British Museum)



English Lead Glazed Earthenware Teapot from Staffordshire
Factory of Thomas Whieldon c. 1760
(The British Museum)



English Lead Glazed Earthenware Teapot from Staffordshire

c. 1756

(The British Museum)



English Lead Glazed Earthenware / Creamware Teapot
by William Greatbatch c. 1760 - 1765
(Victoria & Albert)



English Lead Glazed Earthenware / Creamware Transfer Printed Teapot

c. 1770

(Private Collection)



English Lead Glazed Earthenware / Creamware Transfer Printed Teapot

c. 1770

(Private Collection)



English Lead Glazed Earthenware / Creamware Transfer Printed Teapot
Thomas Radford, Cockpit Hill Factory c. 1770
(Private Collection)



English Lead Glazed Earthenware / Creamware Transfer Printed Teapot
Thomas Radford, Cockpit Hill Factory c. 1770
(Private Collection)



English Lead Glazed Earthenware Teapot
Josiah Wedgwood Manufactory c. 1769 - 1781
(Victoria & Albert)



English Lead Glazed Earthenware / Creamware Transfer Printed Teapot from Staffordshire
Josiah Wedgwood Manufactory c. 1775
(Victoria & Albert)



English Lead Glazed Earthenware / Creamware Transfer Printed Teapot from Staffordshire
Josiah Wedgwood Manufactory c. 1770
(Victoria & Albert)



English Lead Glazed Earthenware / Creamware Transfer Printed Teapot from Staffordshire
Josiah Wedgwood Manufactory c. 1775
(Jacobs Collection)



English Lead Glazed Earthenware / Creamware Transfer Printed Teapot from Eturia
Josiah Wedgwood Manufactory c. 1770 - 1780
(Victoria & Albert)



English Lead Glazed Earthenware / Creamware Transfer Printed Teapot from Eturia
Josiah Wedgwood Manufactory c. 1770 - 1780
(Victoria & Albert)



English Lead Glazed Earthenware / Creamware Liverpool Transfer Printed Teapot from Staffordshire
Josiah Wedgwood Manufactory c. 1765 - 1770
(Private Collection)



English Lead Glazed Earthenware / Creamware Liverpool Transfer Printed Teapot from Staffordshire
Josiah Wedgwood Manufactory c. 1765 - 1770
(Private Collection)



English Lead Glazed Earthenware / Creamware Transfer Printed Teapot from Staffordshire
Josiah Wedgwood Manufactory c. 1770
(Victoria & Albert)



English Lead Glazed Earthenware / Creamware Liverpool Transfer Printed Teapot from Staffordshire
Josiah Wedgwood Manufactory c. 1765
(Private Collection)



English Lead Glazed Earthenware / Creamware Transfer Printed Teapot from Staffordshire or Liverpool

c. 1770
(Victoria & Albert)



English Lead Glazed Earthenware / Creamware Transfer Printed Teapot from Staffordshire
Josiah Wedgwood Manufactory c. 1774
(Victoria & Albert)



English Lead Glazed Earthenware / Creamware Transfer Printed Teapot from Staffordshire
Josiah Wedgwood Manufactory c. 1774
(Victoria & Albert)



English Lead Glazed Earthenware / Creamware Teapot

1773
(Private Collection)



English Lead Glazed Earthenware / Creamware Teapot
"Health to the Sick / Honour to the Brave / Success to the Lover / & freedom to the Slave" c. 1775
(Winterthur)



English Lead Glazed Earthenware / Creamware Teapot
Possibly by the Cockpit Hill Factory of Derby c. 1766 - 1770
(National Museum of American History - Smithsonian Institution)



English Lead Glazed Earthenware / Creamware Teapot
Possibly by the Cockpit Hill Factory of Derby c. 1766 - 1770
(National Museum of American History - Smithsonian Institution)



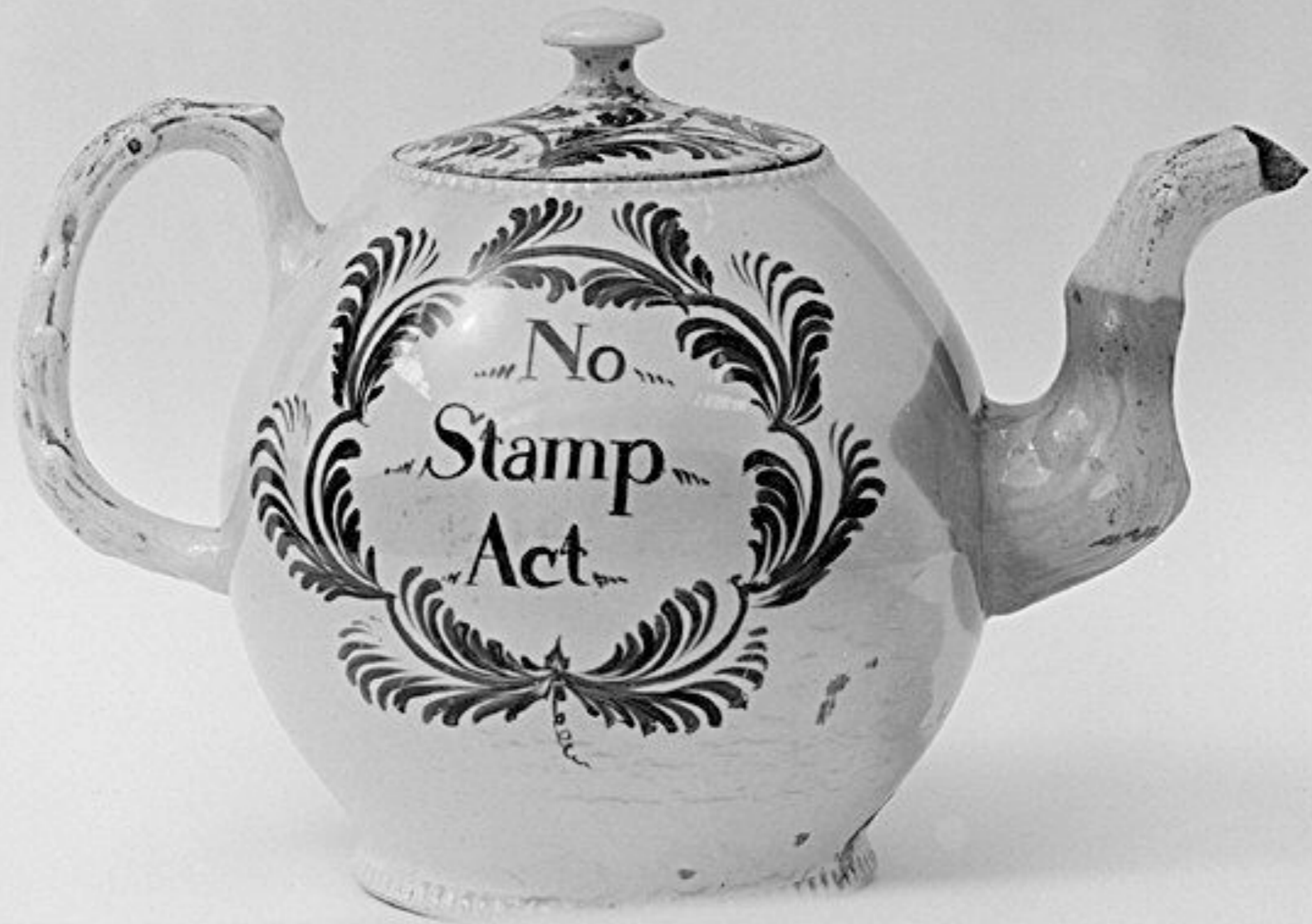
English Lead Glazed Earthenware / Creamware Teapot
Possibly by the Cockpit Hill Factory of Derby, England c. 1766 - 1770
(National Museum of American History - Smithsonian Institution)



English Lead Glazed Earthenware / Creamware Teapot
c. 1766 - 1770
(Kamm Teapot Foundation)



English Lead Glazed Earthenware / Creamware Teapot
c. 1766 - 1770
(Kamm Teapot Foundation)



English Lead Glazed Earthenware / Creamware Teapot
Possibly by the Cockpit Hill Factory of Derby, England c. 1766 - 1770
(Metropolitan Museum of Art)



English Lead Glazed Earthenware / Creamware Teapot
Possibly by the Cockpit Hill Factory of Derby, England c. 1766 - 1770
(Peabody Essex Museum)



English Lead Glazed Earthenware / Creamware Teapot
Possibly by the Cockpit Hill Factory of Derby, England c. 1766 - 1770
(Private Collection)



English Lead Glazed Earthenware Teapot from Staffordshire

c. 1775

(Victoria & Albert)



English Lead Glazed Earthenware / Creamware Teapot
c. 1765
(Museum of Fine Arts, Boston)



English Lead Glazed Earthenware / Creamware Tea Pot
Leeds Manufactory c. 1775
(The British Museum)



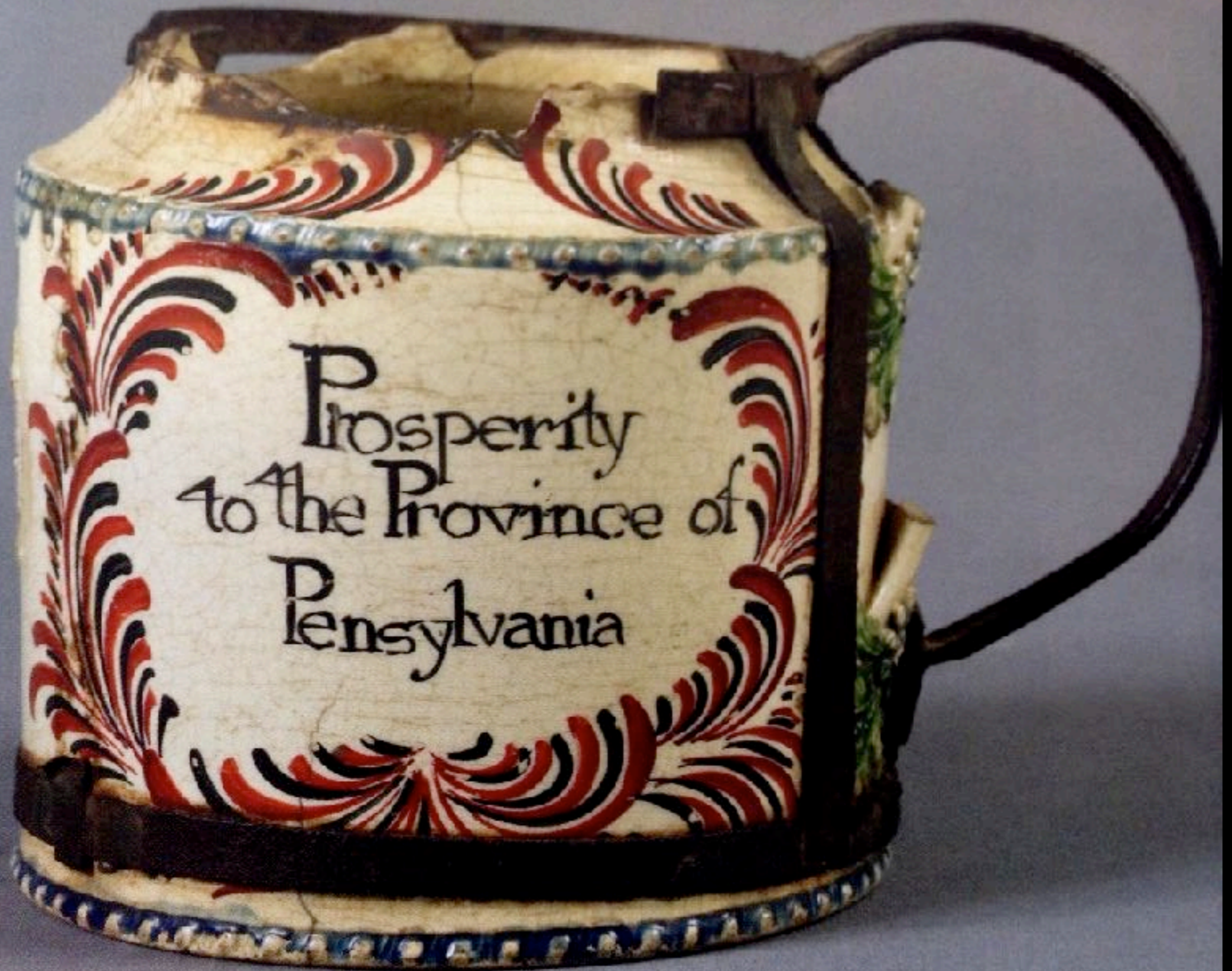
English Lead Glazed Earthenware / Creamware Tea Pot
Leeds Manufactory 1773
(Rotherham Museums Galleries & Heritage Service)



English Lead Glazed Earthenware / Creamware Teapot Depicting "Christ as sending in to heaven"
for Mathew Echers, 1777
(John Howard)



English Lead Glazed Earthenware / Creamware Teapot Depicting "Christ as sending in to heaven"
for Mathew Echers, 1777
(John Howard)



English Lead Glazed Earthenware / Creamware Tea Pot with Iron Repair Handle
Leeds Manufactory c. 1765
(Private Collection)



English Lead Glazed Earthenware / Creamware Tea Pot
c. 1785
(Chipstone Foundation)



English Lead Glazed Earthenware Teapot from Staffordshire

c. 1775

(Victoria & Albert)



English Lead Glazed Earthenware Teapot from Staffordshire

c. 1755

(Colonial Williamsburg Foundation)



English Lead Glazed Earthenware / Creamware Teapot from Yorkshire or Staffordshire

c. 1780

(Private Collection)



English Lead Glazed Earthenware / Creamware Teapot from Staffordshire

c. 1770 - 1775

(Gary Atkins Antiques)



English Lead Glazed Earthenware / Creamware Teapot from Staffordshire
by Leeds Pottery c. 1770
(Private Collection)



English Lead Glazed Earthenware / Creamware Teapot from Staffordshire
by Leeds Pottery c. 1770
(Private Collection)



English Lead Glazed Earthenware / Creamware Teapot from Leeds

c. 1770

(Victoria & Albert)



English Lead Glazed Earthenware / Creamware Teapot from Staffordshire
Portraits of Prince William of Orange & Frederica Sophia Wilhmina, Nice to Frederick the Great c. 1780
(Victoria & Albert)



English Lead Glazed Earthenware Teapot from Staffordshire

c. 1750

(Victoria & Albert)



English Lead Glazed Earthenware / "Jackware" Tea Pot Recovered at Fort Stanwix

c. 1750

(Fort Stanwix)



English Lead Glazed Earthenware / "Jackware" Teapot Shards Recovered from Saunders Point, Maryland
c. 1750
(Jefferson Patterson Park & Museum, Maryland)



English Lead Glazed Earthenware / "Jackware" Teapot
18th Century
(Private Collection)



English Lead Glazed Earthenware / "Jackware" Teapot

c. 1750 - 1800

(Darwin County - Shrewsbury Museum Services)



English Lead Glazed / "Jackfield" Earthenware / Redware Tea & Coffee Service from Staffordshire
c. 1775
(Skinner)



English Lead Glazed Earthenware / "Shopwhire" Teapot from Staffordshire

c. 1750 -1770
(Winterthur)

American Lead Glazed
Earthenware
Teapots



American Lead Glazed Slip Decorated Earthenware Teapot Likely from Pennsylvania
Attributed to Gottfried Aust c. 1756 - 1771
(Metropolitan Museum of Art)

French Tin Glazed
Earthenware
Teapots



French Tin Glazed Earthenware Teapot
Niderviller Pottery and Porcelain Factory c. 1770 - 1775
(Victoria & Albert)

Dutch Tin Glazed
Earthenware
Teapots



Dutch Tin Glazed Earthenware Teapot Used by the Howland Family of Plymouth, Massachusetts Around 1690
Pottery of Adrianus Kocks, Delft, Holland
(Pilgrim Hall Museum, Plymouth, Massachusetts)



Dutch Tin Glazed Earthenware Teapot
Attributed to Ary van Rijsselberg, De Grieksche A (Greek A) Factory Late 17th Century
(Museum of Fine Arts, Boston)



Dutch Tin Glazed Earthenware Teapot
Attributed to Adriaen Kock, Proprietor of the De Grieksche A (Greek A) Factory c. 1701 - 1722
(Museum of Fine Arts, Boston)



Dutch Tin Glazed Earthenware Teapot
Attributed to Ary van Rijsselberg, De Grieksche A (Greek A) Factory c. 1720
(Museum of Fine Arts, Boston)



Dutch Tin Glazed Earthenware Teapot

c. 1725

(Museum of Fine Arts, Boston)

Acknowledgements

The material contained within these slideshows is presented for educational purposes only. The 18th Century Material Culture Resource Center does not personally own any of the items depicted herein and is indebted to the countless museums, libraries, and private collectors who willingly share their collections with the public through the internet. Every attempt has been made to credit these organizations and individuals for their contributions as best as possible.

If there is a question you have regarding a particular item featured within a presentation, please contact the 18th Century Material Culture Resource Center and we will try to answer your inquiry as best as possible. If for any reason you feel there is any item that should not be presented here, or if there is an error in any listing, or if you know the source for any item whose credit is unknown, please inform us and we will make sure your concern is addressed as soon as possible.

Thank you!

- The 18th Century Material Culture Resource Center