

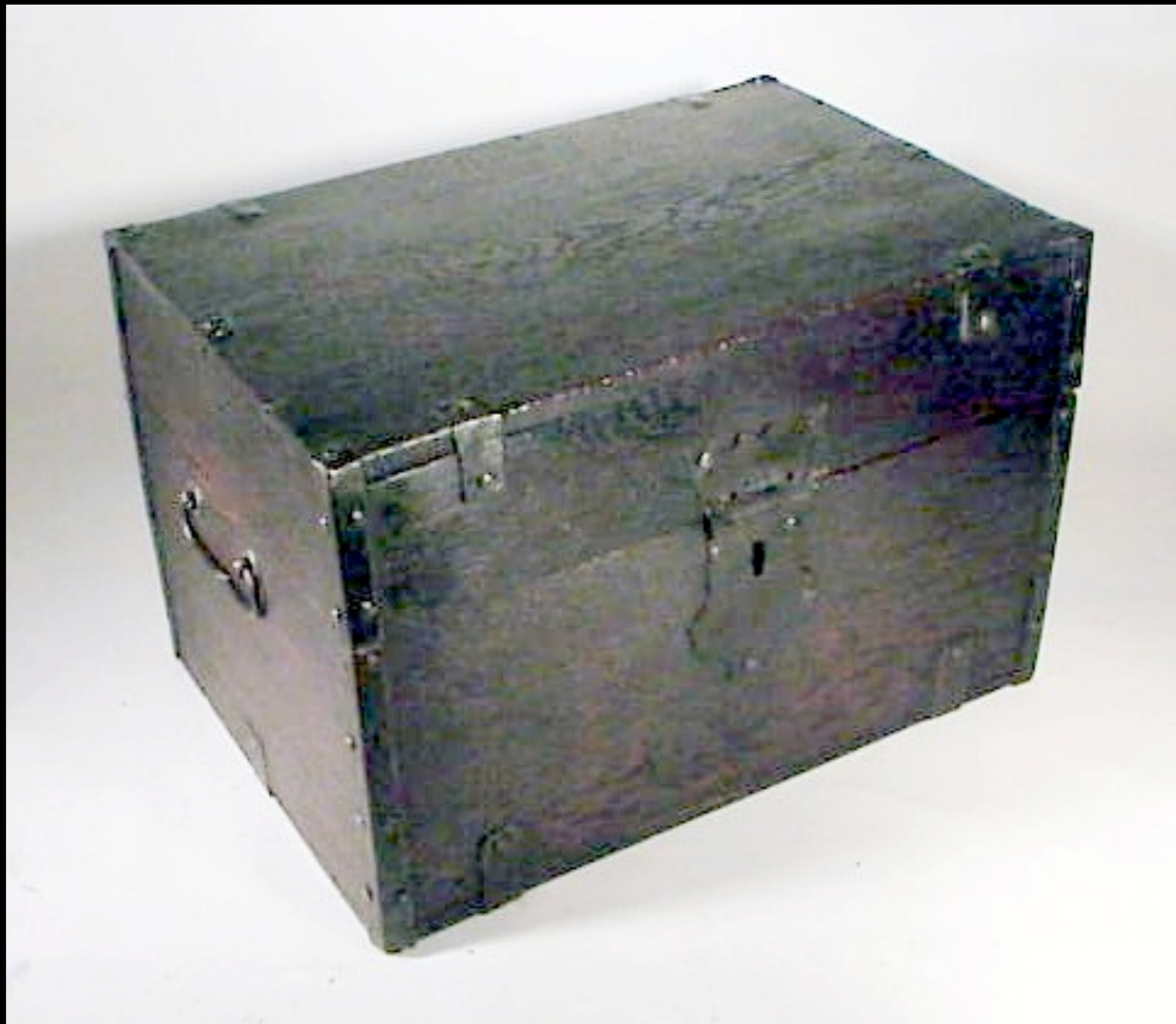
# 18th Century Material Culture Liquor Chests & Decanters



# Liquor Boxes & Chests



Oak Liquor Chest  
Mid 18th Century  
(Private Collection)



Oak Liquor Chest  
Mid 18th Century  
(Private Collection)



Oak Liquor Chest  
Mid 18th Century  
(Private Collection)



Oak Liquor Chest  
Mid 18th Century  
(Skinner)



English Oak Cellarette  
c. 1750 - 1780  
(New Hampshire Historical Society)



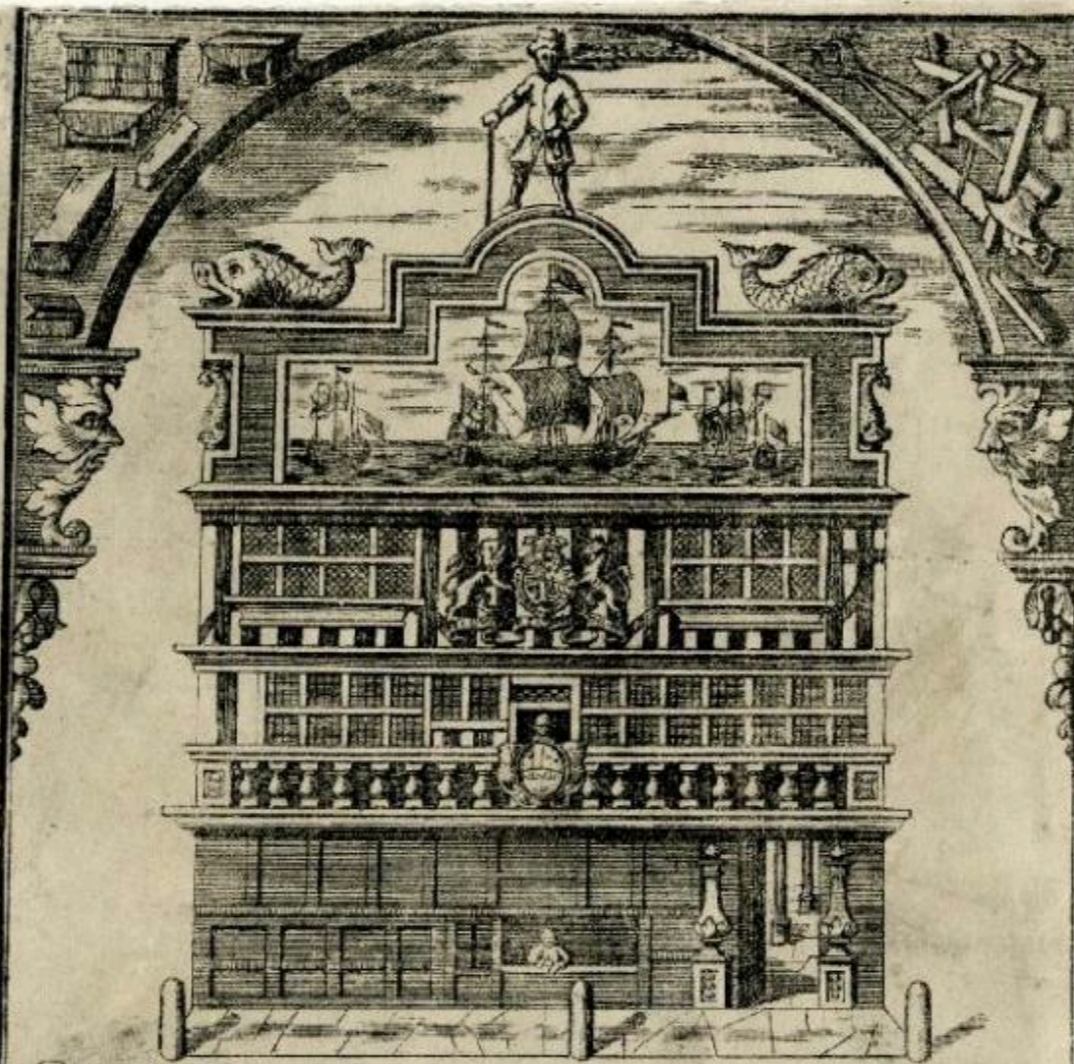
English Oak Cellarette  
c. 1750 - 1780  
(New Hampshire Historical Society)



English Rosewood Cellarette  
c. 1780 - 1800  
(New Hampshire Historical Society)



English Rosewood Cellarette  
c. 1780 - 1800  
(New Hampshire Historical Society)



*Will<sup>m</sup> Overley Joyner at the Sign of  
the East India House in Leaden-hall Street LONDON.  
Makes all sorts of Sea Chests in Deal or Wainscot.  
Ruff or Smooth Packing Chests or Cases, and Cases  
of Bottles, & Boxes of all Sizes, Presses in Deal or  
Wainscot, & Bedsteads, Tables, Desks, Book Cases, Bu-  
ronus & Writing Desks, Letter holes, & Drawers for Shops.  
Allso Counters and all sorts of Joyners worke done  
— at Reasonable Rates —*

Trade Card "... or Cases, and Cases of Bottles, & Boxes of all sizes..."  
18th Century  
(British Museum)

# Decanters



English Lead Glass "PORT" Decanter  
c. 1765 - 1780  
(Winterthur)



English Lead Glass "MADEIRA" Decanter

c. 1760 - 1775  
(Winterthur)



English Lead Glass "CLARET" Decanter  
c. 1765  
(Butler's Antiques)



English Lead Glass "CLARET" Decanter

c. 1765

(Butler's Antiques)

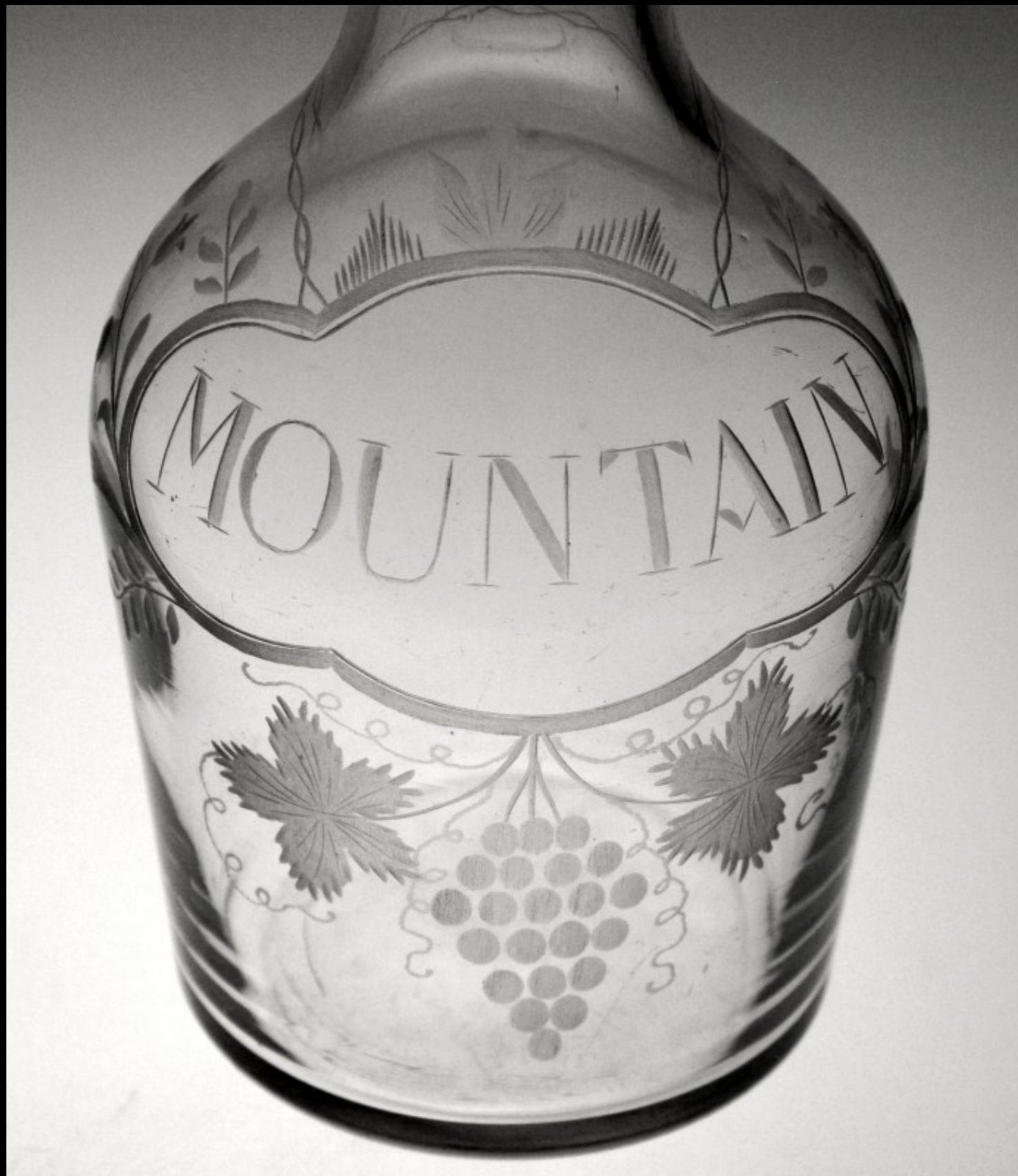


English Lead Glass "CLARET" Decanter and Wine Glasses  
Possibly Decorated at William Beilby's Shop, Newcastle upon Tyne, England 1765  
(Winterthur)



English Lead Glass "MOUNTAIN" (A Fortified Dessert Wine made from White Grapes grown in Malaga) Decanter

c. 1750 - 1760  
(Butler's Antiques)



English Lead Glass "MOUNTAIN" (A Fortified Dessert Wine made from White Grapes grown in Malaga) Decanter

c. 1750 - 1760

(Butler's Antiques)



English Lead Glass Cruciform Decanter

c. 1720 - 1740

(Butler's Antiques)



English Lead Glass Cruciform Decanter

c. 1720 - 1740

(Butler's Antiques)



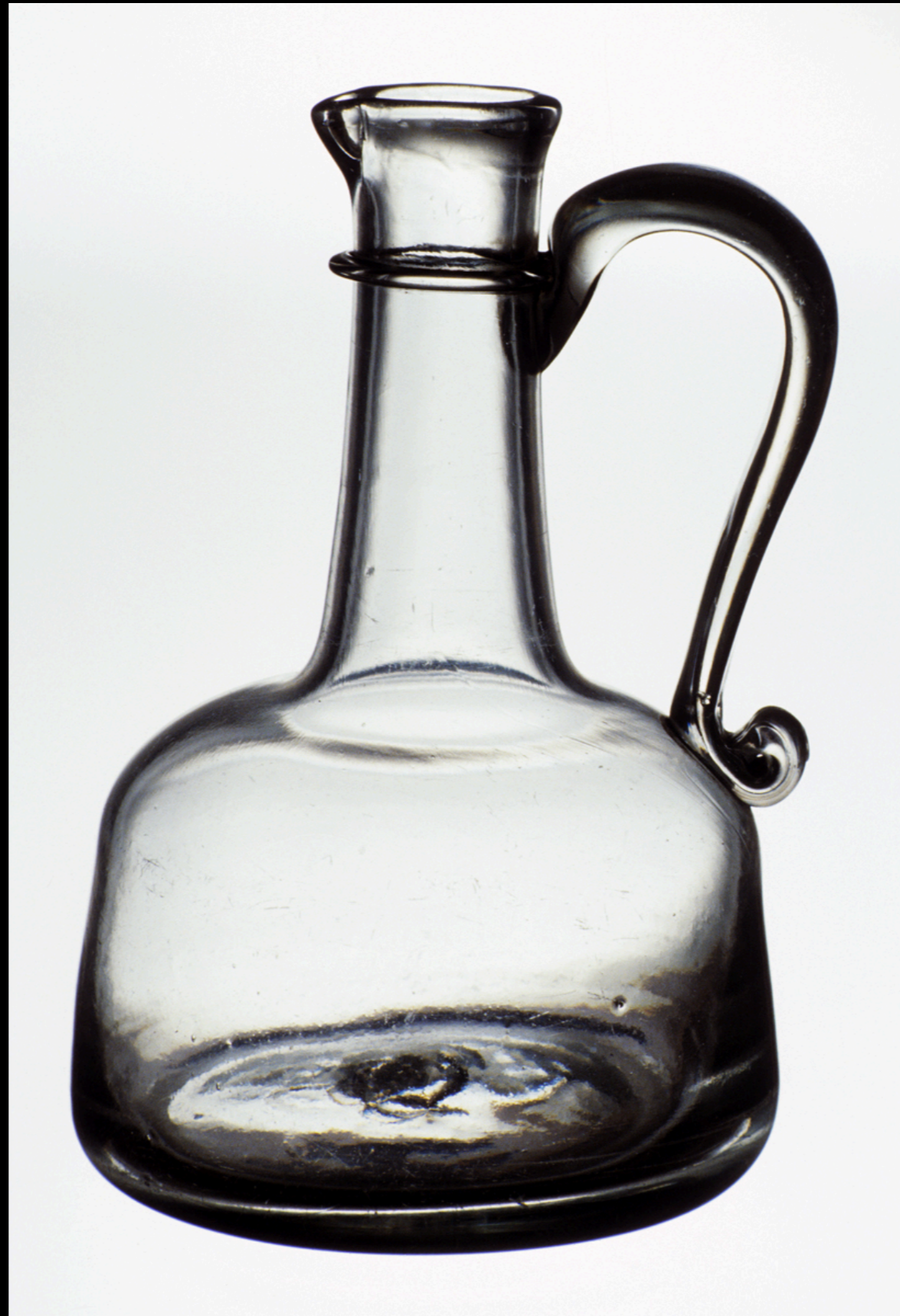
European Lead Glass Decanter with Heart Stopper  
c. 1780  
(Butler's Antiques)



European Lead Glass Decanter with Heart Stopper  
c. 1780  
(Butler's Antiques)



Foliate Vescias & Stars Engraved Tapered Decanter with Cut Disc Stopper  
c. 1780  
(Private Collection)



English Lead Glass Bottle Decanter with Handle

c. 1720 - 1740  
(Winterthur)

# Wine Siphons



English or American Silver Wine Siphon  
c. 1750 - 1820  
(Winterthur)

# Acknowledgements

The material contained within these slideshows is presented for educational purposes only. The 18th Century Material Culture Resource Center does not personally own any of the items depicted herein and is indebted to the countless museums, libraries, and private collectors who willingly share their collections with the public through the internet. Every attempt has been made to credit these organizations and individuals for their contributions as best as possible.

If there is a question you have regarding a particular item featured within a presentation, please contact the 18th Century Material Culture Resource Center and we will try to answer your inquiry as best as possible. If for any reason you feel there is any item that should not be presented here, or if there is an error in any listing, or if you know the source for any item whose credit is unknown, please inform us and we will make sure your concern is addressed as soon as possible.

Thank you!

- The 18th Century Material Culture Resource Center