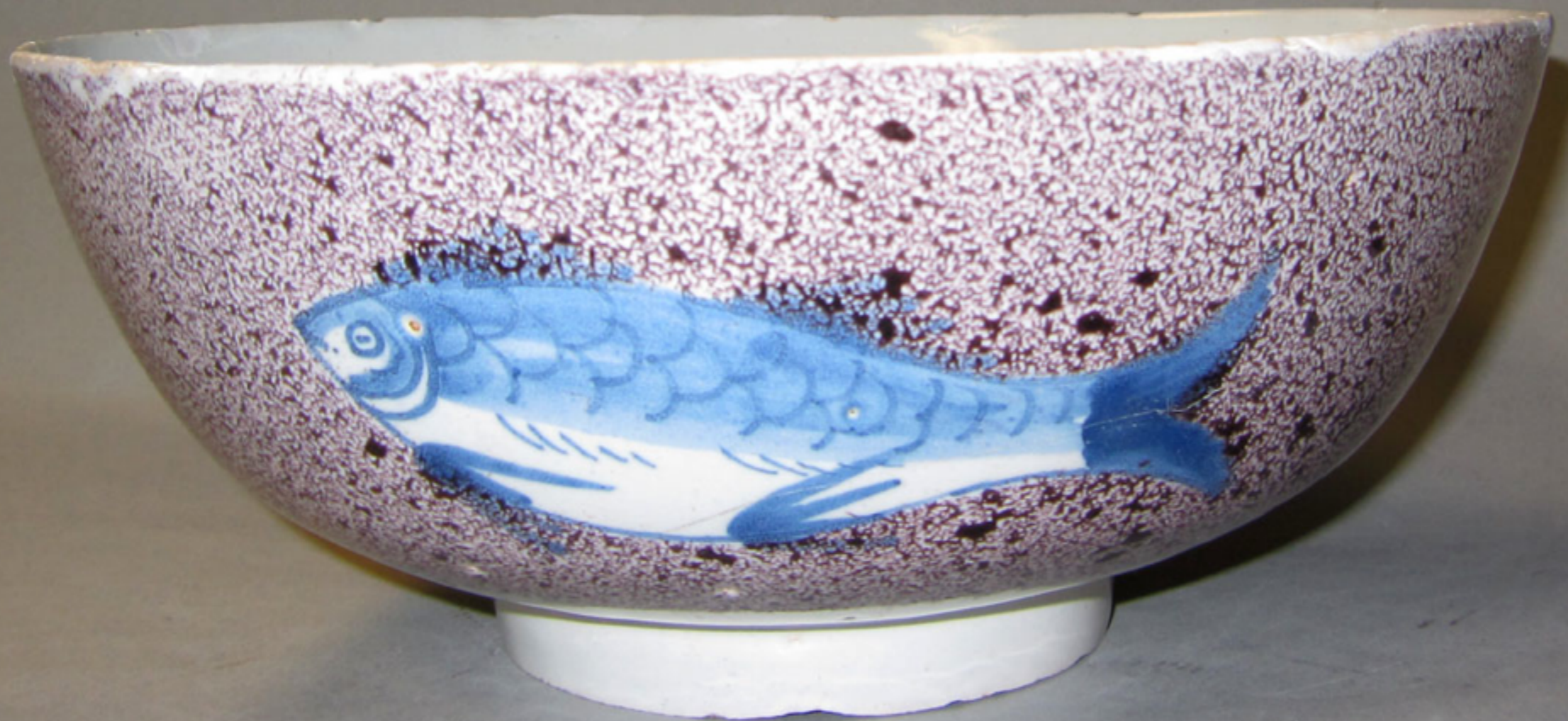


18th Century Material Culture Tin Glazed Earthenware Punch Bowls



English
Tin Glazed Earthenware
Punch Bowls



English Tin Glazed Earthenware Punch Bowls from London
Excavated at the Edward Rumney / Stephen West Tavern, London Town, Maryland c. 1725
(Chipstone / Photo, Gavin Ashworth)



English Tin Glazed Earthenware Punch Bowl

c. 1700 - 1750
(Winterthur)



English Tin Glazed Earthenware Punch Bowl

c. 1700 - 1750
(Winterthur)



English Tin Glazed Earthenware Delft Punch Bowl with Peony Decoration

c. 1750

(Private Collection)



English Tin Glazed Earthenware Delft Punch Bowl with Peony Decoration

c. 1750

(Private Collection)



English Tin Glazed Earthenware Delft Punch Bowl with Jacobite Rose Decoration
18th Century
(Private Collection)



English Tin Glazed Earthenware Delft Punch Bowl with Jacobite Rose Decoration
18th Century
(Private Collection)



English Tin Glazed Earthenware Punch Bowl

c. 1720 - 1750
(Winterthur)



English Tin Glazed Earthenware Punch Bowl

c. 1720 - 1750
(Winterthur)



Remnants of an English Tin Glazed Earthenware Punch Bowl

Recovered from the Home of Printers Jonas & Catherine Green at 124 Charles Street, Annapolis, Maryland c. 1765
(University of Maryland, Banneker-Douglass Museum & Historic Annapolis Foundation)



English Tin Glazed Earthenware Punch Bowl
Recovered from the Three Cranes Tavern Privy, Charlestown, Massachusetts, Burned by the British 17 June, 1775
(City of Boston Archeology Program)



English Punchbowl Decorated with William Hogarth's "A Midnight Modern Conversation"
Mid - 18th Century
(Private Collection)



English Tin Glazed Earthenware & Brass Punch Bowl from London

c. 1720 - 1740

(The British Museum)



English Tin Glazed Earthenware & Brass Punch Bowl from London

c. 1720 - 1740

(The British Museum)



English Tin Glazed Earthenware Delft Punch Bowl

c. 1740

(Private Collection)



English Tin Glazed Earthenware Delft Punch Bowl

c. 1740

(Private Collection)



English Tin Glazed Earthenware Punch Bowl Marked with the Arms and Supporters of the Gardener's Company

London c. 1750 - 1760

(The British Museum)



English Tin Glazed Earthenware Punch Bowl Marked with the Arms and Supporters of the Gardener's Company

London c. 1750 - 1760
(The British Museum)



English Tin Glazed Earthenware Punch Bowl Marked with the Arms and Supporters of the Gardener's Company
London c. 1750 - 1760
(The British Museum)



English Tin Glazed Earthenware Punch Bowl from Bristol
c. 1770
(Five Colleges & Historic Deerfield Museum Consortium)



English Tin Glazed Earthenware Punch Bowl from Bristol
c. 1740 - 1750
(Five Colleges & Historic Deerfield Museum Consortium)



English Tin Glazed Earthenware Punch Bowl

c. 1710 - 1750

(Victoria & Albert Museum)



English Tin Glazed Earthenware Punch Bowl

c. 1710 - 1750

(Victoria & Albert Museum)



English Tin Glazed Earthenware Punch Bowl from London

c. 1760 - 1770
(Winterthur)



English Tin Glazed Earthenware Punch Bowl from London

c. 1760 - 1770
(Winterthur)



English Tin Glazed Earthenware Punch Bowl from London

c. 1770 - 1780
(Winterthur)



English Tin Glazed Earthenware Punch Bowl from London

c. 1770 - 1780
(Winterthur)



English Tin Glazed Earthenware Punch Bowls from Bristol

c. 1720 - 1740
(Winterthur)



English Tin Glazed Earthenware Punch Bowl from Bristol

c. 1720 - 1740
(Winterthur)



English Tin Glazed Earthenware Punch Bowl from Bristol

c. 1720 - 1740
(Winterthur)



English Tin Glazed Earthenware Punch Bowl from Bristol Marked "Success to Trade"

c. 1720 - 1740
(Winterthur)



English Tin Glazed Earthenware Punch Bowl from Bristol Marked "Success to Trade"

c. 1720 - 1740
(Winterthur)



English Tin Glazed Earthenware Punch Bowl from Bristol

c. 1730 - 1740
(Winterthur)



English Tin Glazed Earthenware Punch Bowl from Bristol

c. 1730 - 1740
(Winterthur)



English Tin Glazed Earthenware Punch Bowl from Bristol

c. 1730 - 1740

(Metropolitan Museum of Art)



English Tin Glazed Earthenware Punch Bowl from Bristol

c. 1730 - 1740
(Winterthur)



English Tin Glazed Earthenware Punch Bowl from Bristol

c. 1730 - 1740
(Winterthur)



English Tin Glazed Earthenware Punch Bowl from Bristol

c. 1730 - 1760

(Victoria & Albert)



English Tin Glazed Earthenware Punch Bowl from Bristol

c. 1730 - 1760

(Victoria & Albert)



English Tin Glazed Earthenware Punch Bowl from Bristol

c. 1745 - 1775
(Winterthur)



English Tin Glazed Earthenware Punch Bowl from Bristol

c. 1745 - 1775
(Winterthur)



English Tin Glazed Earthenware Punch Bowl from Lambeth
c. 1770 - 1780
(Winterthur)



English Tin Glazed Earthenware Punch Bowl from Lambeth
c. 1770 - 1780
(Winterthur)



English Tin Glazed Earthenware Delft Punch Bowl
Early 18th Century
(Private Collection)



English Tin Glazed Earthenware Delft Punch Bowl Initialed "E P"
Dated 1735
(Private Collection)



English Tin Glazed Earthenware Punch Bowl from Bristol

c. 1720 - 1730
(Winterthur)



English Tin Glazed Earthenware Punch Bowl from Bristol

c. 1720 - 1730
(Winterthur)



English Tin Glazed Earthenware Punch Bowl from Brislington or London
Marked "Drink faire Dont Sware 1728"
(The British Museum)



English Tin Glazed Earthenware Punch Bowl from Brislington or London
Marked "Drink faire Dont Sware 1728"
(The British Museum)



English Tin Glazed Polychrome Earthenware Punch Bowl from London

c. 1710 - 1730
(Winterthur)



English Tin Glazed Earthenware Punch Bowl from London

c. 1710 - 1730
(Winterthur)



Pook
& Pook
Inc.

English Tin Glazed Polychrome Earthenware Punch Bowl from London
Mid 18th Century
(Pook & Pook Inc.)



English Tin Glazed Polychrome Earthenware Punch Bowl
Mid 18th Century
(Pook & Pook Inc.)



Pook
& Pook
Inc.

English Tin Glazed Polychrome Earthenware Punch Bowl
Mid 18th Century
(Pook & Pook Inc.)



Pook
& Pook
Inc.

English Tin Glazed Polychrome Earthenware Punch Bowl
Mid 18th Century
(Pook & Pook Inc.)



Pook
& Pook
Inc.

English Tin Glazed Polychrome Earthenware Punch Bowl
Mid 18th Century
(Pook & Pook Inc.)



English Tin Glazed Polychrome Earthenware Punch Bowl from Bristol

c. 1725
(Winterthur)



Pook
& Pook
Inc.

English Tin Glazed Polychrome Earthenware Punch Bowl from Bristol or London
Mid 18th Century
(Pook & Pook Inc.)



Pook
& Pook
Inc.

English Tin Glazed Polychrome Earthenware Punch Bowl from Bristol or London
Mid 18th Century
(Pook & Pook Inc.)



Pook
& Pook
Inc.

English Tin Glazed Polychrome Earthenware Punch Bowl from Bristol
Mid 18th Century
(Pook & Pook Inc.)



English Tin Glazed Earthenware Punch Bowl from Lambeth
c. 1690 - 1710
(Winterthur)



English Tin Glazed Earthenware Punch Bowl from Lambeth
c. 1690 - 1710
(Winterthur)



Pook
& Pook
Inc.

English Tin Glazed Polychrome Earthenware Fazackerly Punch Bowl
Mid 18th Century
(Pook & Pook Inc.)



English Tin Glazed Earthenware Punch Bowl

c. 1750 - 1760
(Winterthur)



English Tin Glazed Earthenware Punch Bowl

c. 1750 - 1760

(Winterthur)



English Tin Glazed Earthenware Punch Bowl from Bristol

c. 1730 - 1750
(Winterthur)



English Tin Glazed Earthenware Punch Bowl from Bristol

c. 1730 - 1750
(Winterthur)



English Tin Glazed Earthenware Punch Bowl from Bristol

c. 1730 - 1750
(Winterthur)



English Tin Glazed Earthenware Punch Bowl from Bristol

c. 1730 - 1750
(Winterthur)



English Tin Glazed Earthenware Punch Bowl from Liverpool
c. 1760
(Five Colleges & Historic Deerfield Museum Consortium)



English or Irish Tin Glazed Earthenware Punch Bowl
c. 1756 - 1759
(Five Colleges & Historic Deerfield Museum Consortium)



English Tin Glazed Earthenware Punch Bowls, Likely from Bristol
c. 1750 - 1760
(Winterthur)



English Tin Glazed Earthenware Punch Bowl from Lambeth

c. 1770 - 1790
(Winterthur)



English Tin Glazed Earthenware Punch Bowl from Lambeth

c. 1770 - 1790
(Winterthur)



English Tin Glazed Earthenware Punch Bowl from Lambeth

c. 1720 - 1740
(Winterthur)



English Tin Glazed Earthenware Punch Bowl from Lambeth

c. 1720 - 1740
(Winterthur)



English Tin Glazed Earthenware Punch Bowl from Liverpool

c. 1760 - 1770
(Winterthur)



English Tin Glazed Earthenware Punch Bowl from Liverpool

c. 1765 - 1775
(Winterthur)



English Tin Glazed Earthenware Punch Bowl from Liverpool
“Richard Wyatt, Appellsham, Prosperety to the Flock, may th30 1754”
(The British Museum)



English Tin Glazed Earthenware Punch Bowl from Liverpool
"Richard Wyatt, Appellsham, Prosperety to the Flock, may th30 1754"
(The British Museum)



English Tin Glazed Earthenware Punch Bowl from Liverpool

c. 1750 - 1770
(Winterthur)



English Tin Glazed Earthenware Punch Bowl from Liverpool

c. 1750 - 1770
(Winterthur)



English Tin Glazed Earthenware Punch Bowl from Liverpool

c. 1750 - 1775
(Winterthur)



English Tin Glazed Earthenware Punch Bowl from Liverpool

c. 1750 - 1775
(Winterthur)



Pook
& Pook
Inc.

English Tin Glazed Earthenware Punch Bowl from Liverpool
Mid 18th Century
(Pook & Pook Inc.)



English Tin Glazed Earthenware Punch Bowl from London Marked "Success to Trade"

c. 1775 - 1780

(The British Museum)



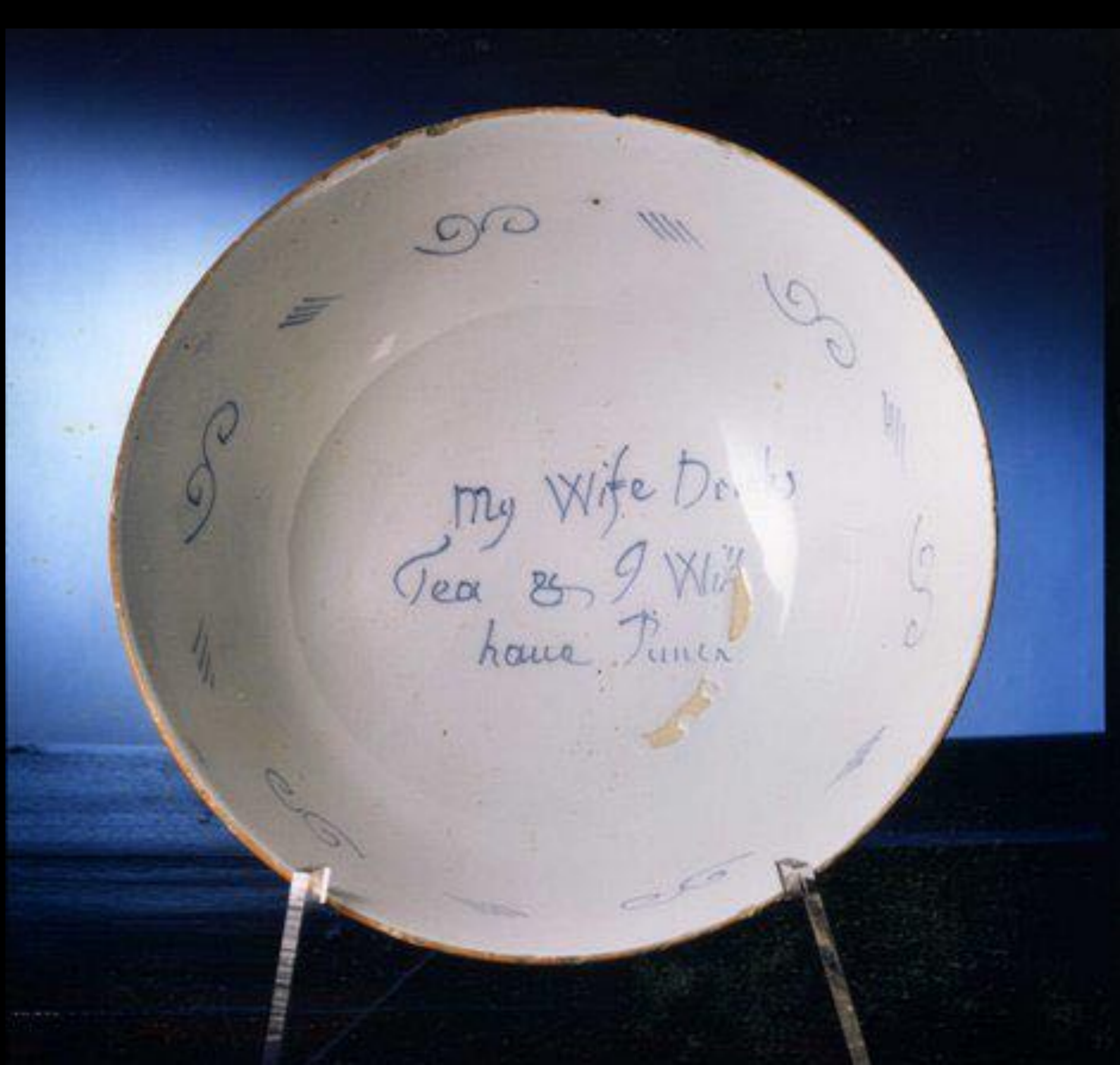
English Tin Glazed Earthenware Punch Bowl from London Marked "Success to Trade"

c. 1775 - 1780

(The British Museum)



English Tin Glazed Earthenware Punch Bowl from London Marked "Success to Trade"
Recovered from the Site of the Home of John Hart, Ropemaker, Deer Street, Portsmouth, New Hampshire
(Strawberry Banke Museum)



English Tin Glazed Earthenware Punch Bowl from London Marked "My Wife Does Tea & I Will have Punch"
Mid 18th Century
(Private Collection)

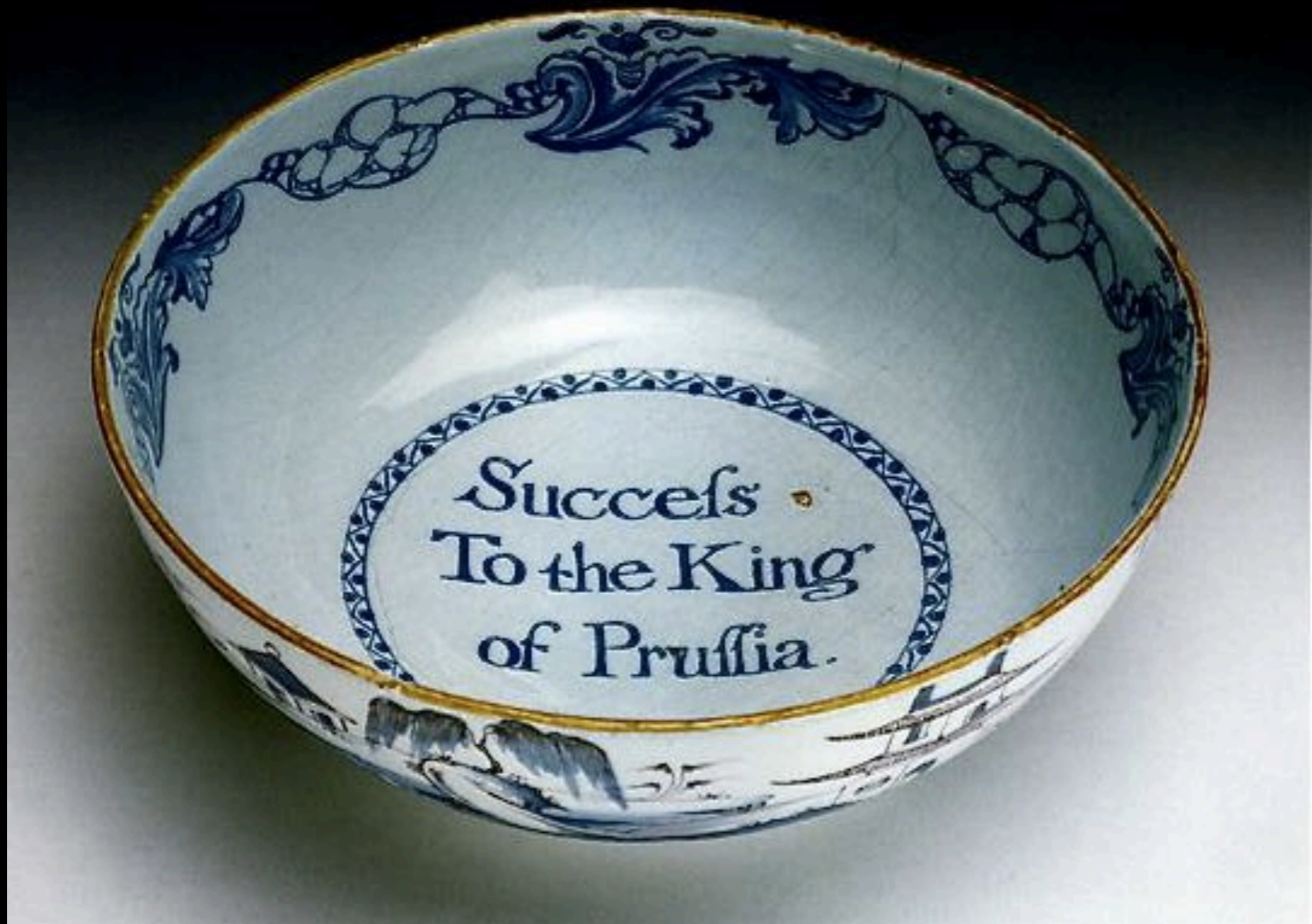


English Tin Glazed Earthenware Punch Bowl Marked "Peace and good Neighborhood"
Mid 18th Century
(Private Collection)



English Tin Glazed Earthenware Punch Bowl Marked "CAVENDISH FOR EVER HUZZA"

Mid 18th Century
(Private Collection)



English Tin Glazed Earthenware Punch Bowl Marked "Success To the King of Prussia"

c. 1760

(Private Collection)



English Tin Glazed Earthenware Punchbowl Marked "ONE MORE AND THEN"

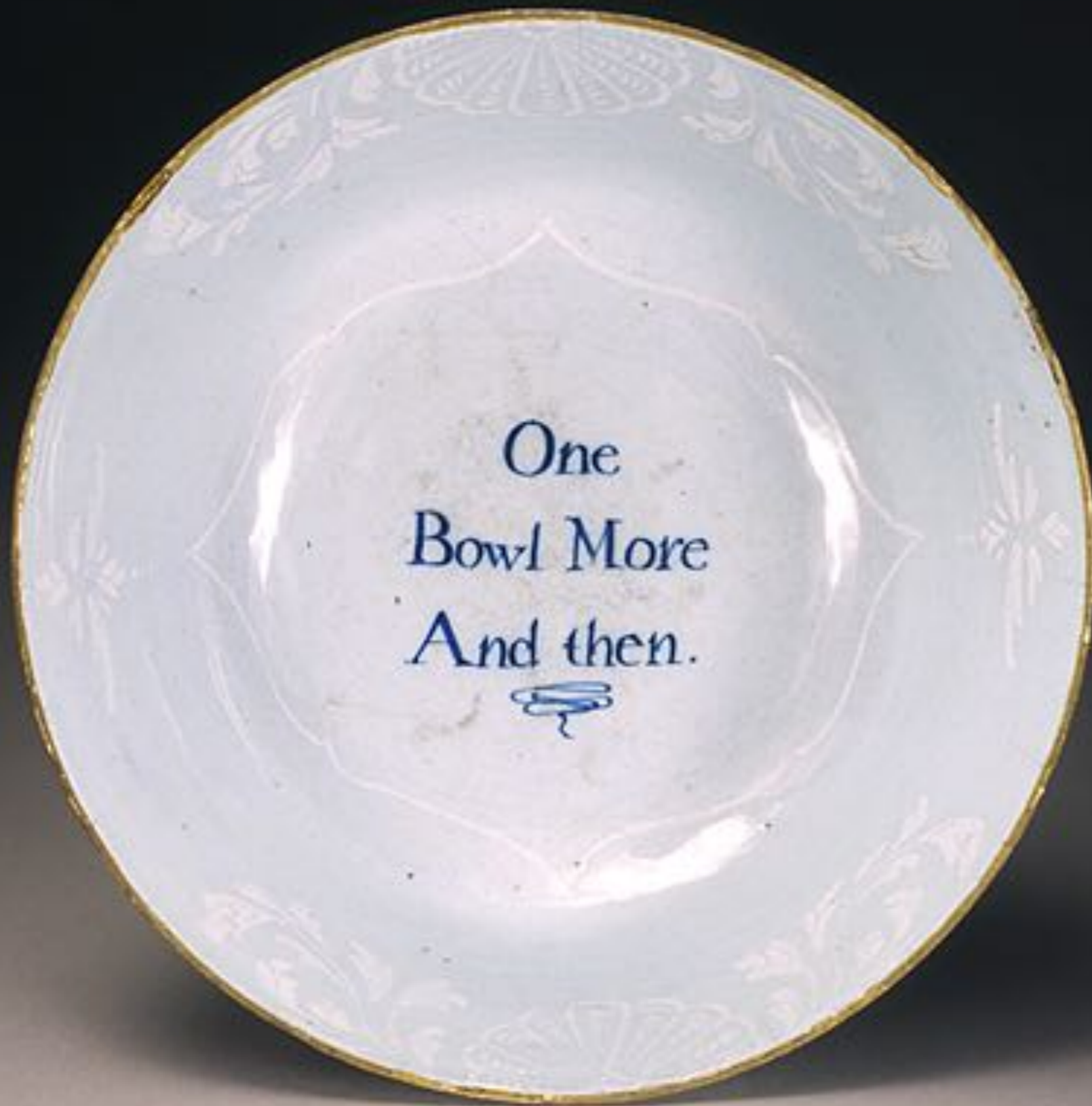
1754
(Williamsburg)



English Tin Glazed Earthenware Punch Bowl Marked "One More and then"
Mid 18th Century
(Private Collection)



English Tin Glazed Earthenware Punch Bowl from London
c. 1755
(Five Colleges & Historic Deerfield Museum Consortium)



English Tin Glazed Earthenware Punch Bowl from London

c. 1755

(Five Colleges & Historic Deerfield Museum Consortium)



English Tin Glazed Earthenware Punch Bowl Marked "One more and then"
Mid 18th Century
(The British Museum)



English Tin Glazed Earthenware Punch Bowl Marked "One more and then"
Mid 18th Century
(The British Museum)



English Tin Glazed Earthenware Punch Bowl Marked "Wilkes And Liberty: No Bu **

c. 1765

(The British Museum)



English Tin Glazed Earthenware Punch Bowl
18th Century
(Winterthur)

English

Tin Glazed Earthenware

Military Punch Bowls



English Tin Glazed Earthenware Punch Bowl
Commemorating Duke William and the Jacobite Rebellion of 1745
(The British Museum)



English Tin Glazed Earthenware Punch Bowl
Commemorating Duke William and the Jacobite Rebellion of 1745
(The British Museum)



English Tin Glazed Earthenware Punch Bowl
Commemorating Duke William and the Jacobite Rebellion of 1745
(Herbert E Ward Collection)



English Tin Glazed Earthenware Punch Bowl Marked "Bonnie Prince Charlie"
"AUDENTIOR IBO / ALL OR NONE" 1749
(The British Museum)



English Tin Glazed Earthenware Punch Bowl Marked "Bonnie Prince Charlie"
"AUDENTIOR IBO / ALL OR NONE" 1749
(The British Museum)



English Tin Glazed Earthenware Punch Bowl Marked "Success to the British Arms"
Mid 18th Century
(The British Museum)



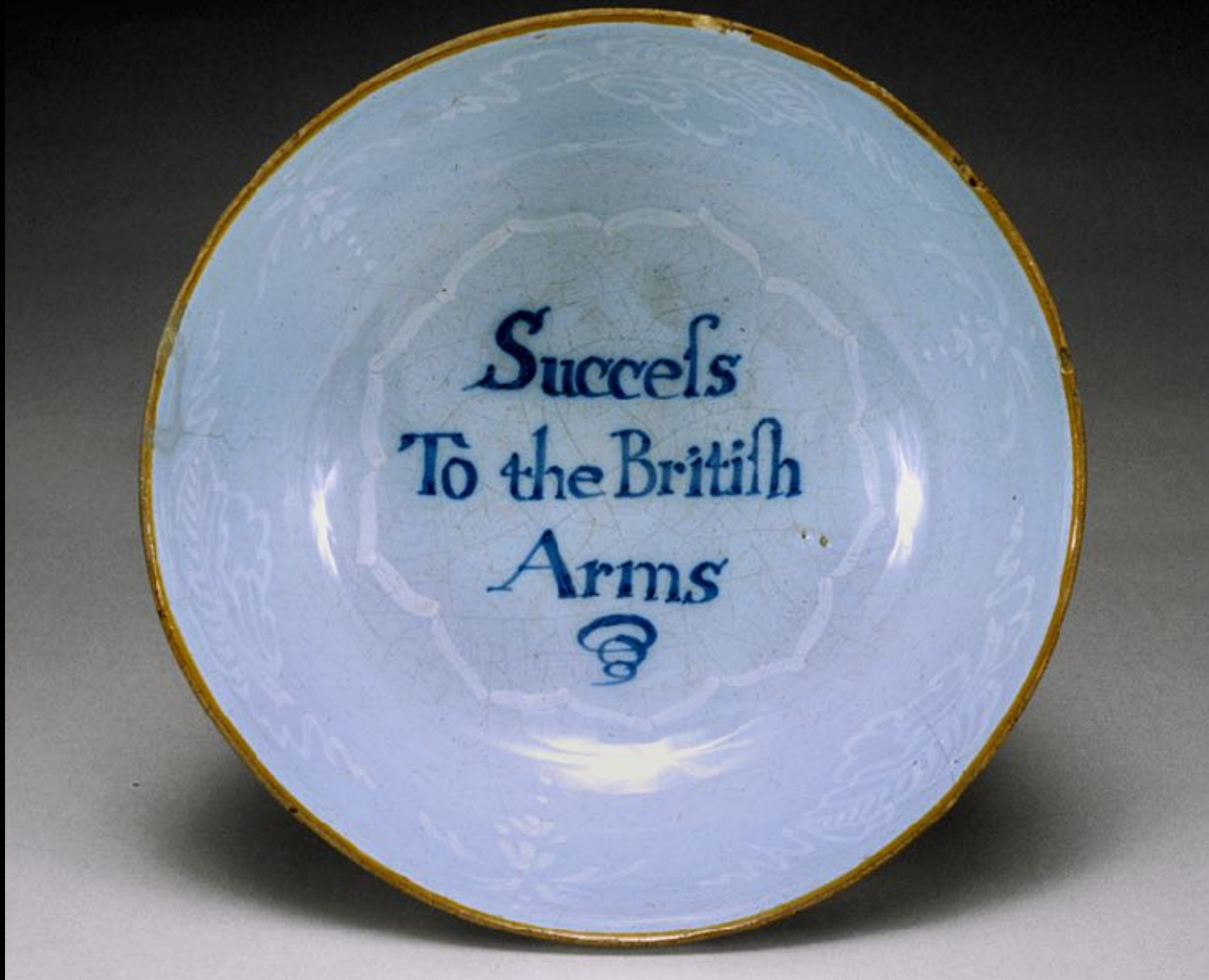
English Tin Glazed Earthenware Punch Bowl Marked "Success to the British Arms"
Mid 18th Century
(The British Museum)



English Tin Glazed Earthenware Punch Bowl Marked "Success to the British Arms"
Mid 18th Century
(The British Museum)



English Tin Glazed Earthenware Punch Bowl from London
c. 1756 - 1763
(Five Colleges & Historic Deerfield Museum Consortium)



English Tin Glazed Earthenware Punch Bowl from London
c. 1756 - 1763
(Five Colleges & Historic Deerfield Museum Consortium)



English Tin Glazed Earthenware Punch Bowl Marked "Rise Up Bold Britons.."

c. 1760

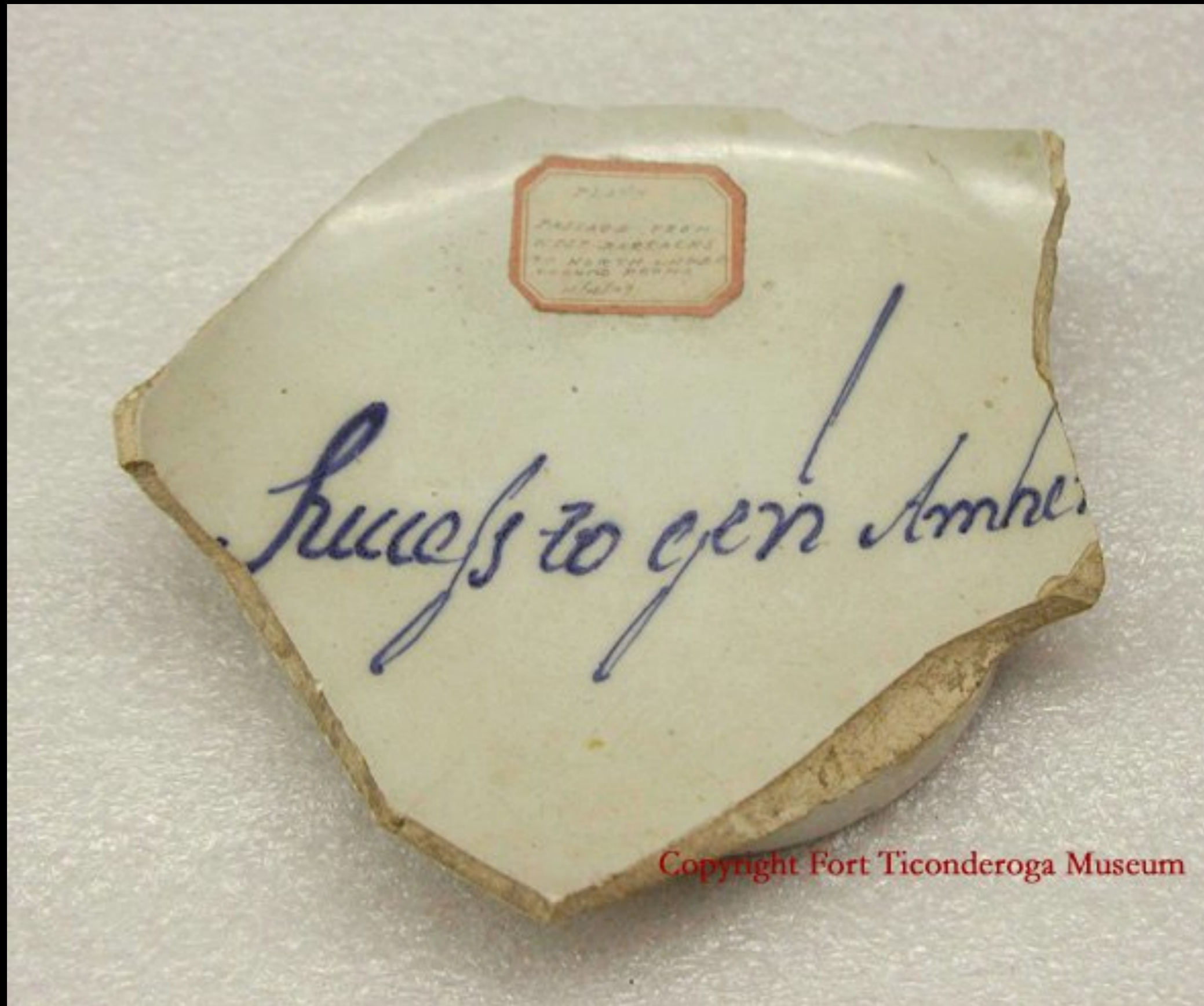
(The British Museum)



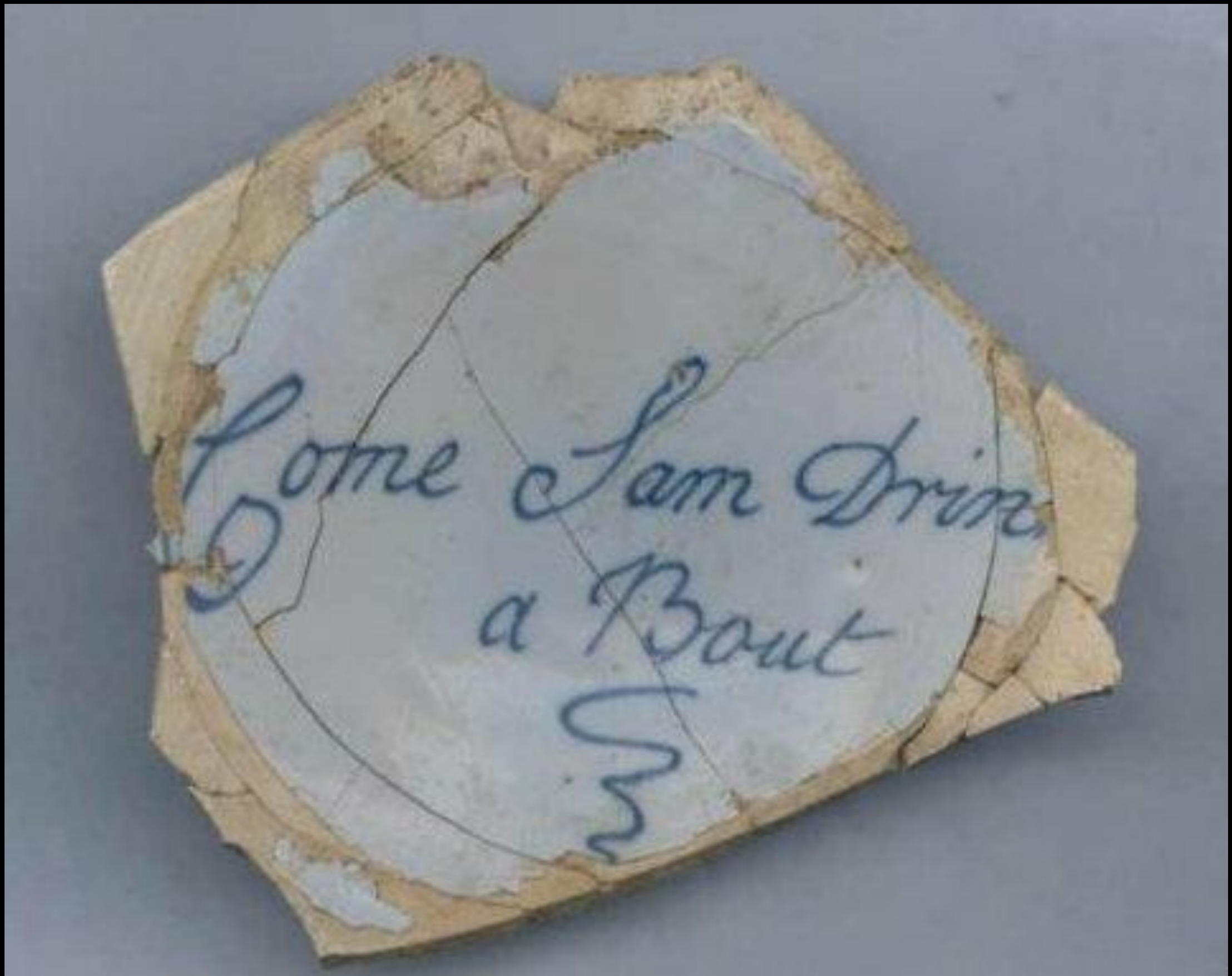
English Tin Glazed Earthenware Punch Bowl Marked "Rise Up Bold Britons.."

c. 1760

(The British Museum)



English Tin Glazed Earthenware Punch Bowl Shard Marked "Success to genl Amher(st)"
Recovered at Fort Ticonderoga c. 1758
(Fort Ticonderoga)



English Tin Glazed Earthenware Punch Bowl Marked "Come Sam Drink a Bout"
Recovered at Crown Point, New York c. 1760
(Crown Point)



English Tin Glazed Earthenware Punch Bowl Marked "Success to General Burgoyne in Canada"

c. 1777

(Royal Ontario Museum, Toronto)



English Tin Glazed Earthenware Punch Bowl Marked "Success to General Burgoyne in Canada"

c. 1777

(Royal Ontario Museum, Toronto)



English Tin Glazed Earthenware Punch Bowl Marked "Success to British Arms in America"

c. 1775 - 1780
(D.A.R. Museum)



English Tin Glazed Earthenware Punchbowl from Staffordshire or Liverpool Marked "Genl Washington"

c. 1776 - 1783
(Winterthur)



English Tin Glazed Earthenware Punchbowl from Staffordshire or Liverpool Marked "Genl Washington"

c. 1776 - 1783
(Winterthur)

English

Tin Glazed Earthenware

Naval Punch Bowls



English Tin Glazed Earthenware Punch Bowl from Liverpool Marked "Britons Still will rule the Main"

c. 1760

(National Maritime Museum)



English Tin Glazed Earthenware Punch Bowl from Liverpool Marked "Success to the British Fleets"

c. 1750 - 1760
(Victoria & Albert)



English Tin Glazed Earthenware Punch Bowl from Liverpool Marked "Success to the British Fleets"

c. 1750 - 1760
(Victoria & Albert)



English Tin Glazed Earthenware Punch Bowl from Bristol / North Somerset
Marked "GOD PRESERVE YE TWO BROTHERS 1761"
(National Maritime Museum)



English Tin Glazed Earthenware Punch Bowl Marked "Success tot he Emperor"

c. 1762

(National Maritime Museum)



English Tin Glazed Earthenware Punch Bowl from Liverpool
Marked "A Ship and Launch. Thomas Cottle, 1752"
(National Maritime Museum)



English Tin Glazed Earthenware Punch Bowl from Liverpool
Marked "Success to the Nancy 1766"
(National Maritime Museum)



English Tin Glazed Earthenware Punch Bowl Marked "Success to the Beehive"

c. 1760 - 1770

(National Maritime Museum)



English Tin Glazed Earthenware Punch Bowl Marked "Success to the Beehive"

c. 1760 - 1770

(National Maritime Museum)



English Tin Glazed Earthenware Punch Bowl Shards Recovered in a Philadelphia Privy

c. 1760 - 1770

(Museum of the American Revolution)



English Tin Glazed Earthenware Punch Bowl Shards Recovered in a Philadelphia Privy

c. 1760 - 1770

(Museum of the American Revolution)



English Tin Glazed Earthenware Punch Bowl Shards Recovered in a Philadelphia Privy
c. 1760 - 1770
(Museum of the American Revolution)



English Tin Glazed Earthenware Punch Bowl Marked "Success to the Tyger"

c. 1760 - 1770
(Chipstone)



English Tin Glazed Earthenware Punch Bowl Marked "Success to the Tyger"

c. 1760 - 1770
(Chipstone)



English Tin Glazed Earthenware Punch Bowl from Liverpool
Possibly by William Jackson c. 1765 - 1770
(Victoria & Albert)



English Tin Glazed Earthenware Punch Bowl from Liverpool
Possibly by William Jackson c. 1765 - 1770
(Victoria & Albert)



English Tin Glazed Earthenware Punch Bowl from Liverpool
"Success to the Charming Peggy of Philadelphia" c. 1750
(Philadelphia Museum of Art)



English Tin Glazed Earthenware Punch Bowl from Liverpool
"Success to the Charming Peggy of Philadelphia" c. 1750
(Philadelphia Museum of Art)



English Tin Glazed Earthenware Punch Bowl from Bristol

c. 1765 - 1775
(Winterthur)



English Tin Glazed Earthenware Punch Bowl from Bristol
c. 1765 - 1775
(Winterthur)



English Tin Glazed Earthenware Punch Bowl Marked "ADMIRAL RODNEY FOR EVER"

c. 1768

(National Maritime Museum)



English Tin Glazed Earthenware Punch Bowl Marked "ADMIRAL RODNEY FOR EVER"

c. 1768

(National Maritime Museum)



English Pearlware Punch Bowl from Liverpool Marked "Success to Adml. Rodney"

c. 1782

(National Maritime Museum)



English Pearlware Punch Bowl from Liverpool Marked "Success to Adml. Rodney"

c. 1782

(National Maritime Museum)



English Tin Glazed Earthenware Punch Bowl from Lambeth Marked "ADMIRAL KEPPEL FOR EVER"

c. 1782

(National Maritime Museum)



English Tin Glazed Earthenware Punch Bowl from Lambeth Marked "ADMIRAL KEPPEL FOR EVER"

c. 1780

(National Maritime Museum)



English Tin Glazed Earthenware Punch Bowl from Lambeth Marked "ADMIRAL KEPPEL FOR EVER"

c. 1780

(National Maritime Museum)



English Tin Glazed Earthenware Punch Bowl Marked "Trade and Navigation"

c. 1775 - 1780

(National Maritime Museum)



English Tin Glazed Earthenware Punch Bowl Marked "Success to the Herring Fishery"
Late 18th Century
(National Maritime Museum)

English Footed
Tin Glazed Earthenware
Punch Bowls



English or Dutch Tin Glazed Footed Punch Bowl with Lid
1697
(The British Museum)



English or Dutch Tin Glazed Footed Punch Bowl with Lid
1697
(The British Museum)



English or Dutch Tin Glazed Footed Punch Bowl with Lid
1697
(The British Museum)



English Tin Glazed Earthenware Footed Punch Bowl from London

1752
(Winterthur)



English Tin Glazed Earthenware Footed Punch Bowl from London

1752
(Winterthur)



English Tin Glazed Earthenware Footed Punch Bowl from London
Dated 1755
(The British Museum)



English Tin Glazed Earthenware Footed Punch Bowl from London
Dated 1755
(The British Museum)



English Tin Glazed Earthenware Footed Punch Bowl from London
Dated 1755
(The British Museum)

Irish

Tin Glazed Earthenware

Punch Bowls



Irish Tin Glazed Earthenware Punch Bowl
by the Factory of Capt Henry Delamain of Dublin 1753
(The British Museum)



Irish Tin Glazed Earthenware Punch Bowl
by the Factory of Capt Henry Delamain of Dublin 1753
(The British Museum)

Dutch
Tin Glazed Earthenware
Punch Bowls



Dutch Tin Glazed Earthenware Delft Punch Bowl
1669
(Private Collection - Ceramics in America)



Dutch Tin Glazed Earthenware Delft Punch Bowl
"F S·M 1713"
(Winterthur)



Dutch Tin Glazed Earthenware Delft Punch Bowl
"F S*M 1713"
(Winterthur)



Dutch Tin Glazed Earthenware Delft Punch Bowl
Early 18th Century
(Private Collection)



Dutch Tin Glazed Earthenware Delft Punch Bowl

c. 1720 - 1750
(Winterthur)



Dutch Tin Glazed Earthenware Delft Punch Bowl Marked "George Skinner Boston"

1732
(Winterthur)



Dutch Tin Glazed Earthenware Delft Punch Bowl Marked "George Skinner Boston"

1732
(Winterthur)



Dutch Tin Glazed Earthenware Delft Punch Bowl
"1749 DIVAT DGVB"
(Historic Deerfield)



Dutch Tin Glazed Earthenware Delft Punch Bowl
"1749 DIVAT DGVB"
(Historic Deerfield)



Pook
& Pook
Inc.

English Tin Glazed Polychrome Earthenware Punch Bowl
Mid 18th Century
(Pook & Pook Inc.)



Dutch Tin Glazed Earthenware Punch Bowl Marked "One Bowle More and then"

c. 1750 - 1760
(Winterthur)



Dutch Tin Glazed Earthenware Punch Bowl Marked "One Bowle More and then"

c. 1750 - 1760
(Winterthur)

Acknowledgements

The material contained within these slideshows is presented for educational purposes only. The 18th Century Material Culture Resource Center does not personally own any of the items depicted herein and is indebted to the countless museums, libraries, and private collectors who willingly share their collections with the public through the internet. Every attempt has been made to credit these organizations and individuals for their contributions as best as possible.

If there is a question you have regarding a particular item featured within a presentation, please contact the 18th Century Material Culture Resource Center and we will try to answer your inquiry as best as possible. If for any reason you feel there is any item that should not be presented here, or if there is an error in any listing, or if you know the source for any item whose credit is unknown, please inform us and we will make sure your concern is addressed as soon as possible.

Thank you!

- The 18th Century Material Culture Resource Center