

18th Century Material Culture

Engineering, Surveying, Drafting & Cartography III



Drafting Sets



Brass Compass & Dividers
Used by Samuel Lane of Stratham, New Hampshire c. 1747
(New Hampshire Historical Society)



Drafting Set in Shagreen Case
18th Century
(Sharpsburg Arsenal)



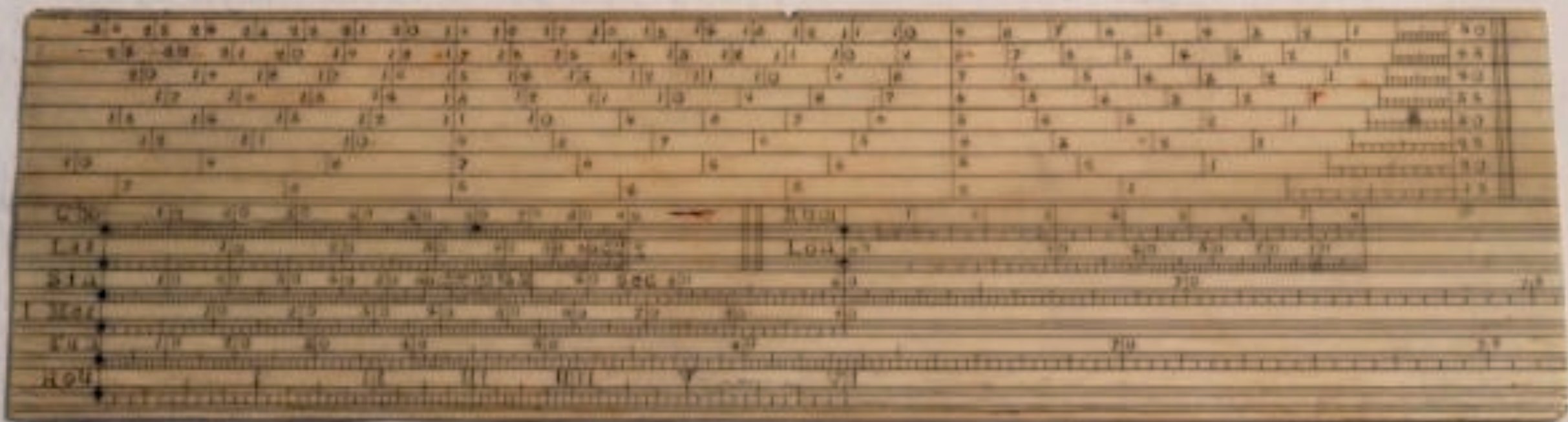
Drafting Set in Shagreen Case
18th Century
(Sharpsburg Arsenal)



Drafting Set in Shagreen Case
18th Century
(Sharpsburg Arsenal)



Drafting Set in Shagreen Case
18th Century
(Sharpsburg Arsenal)



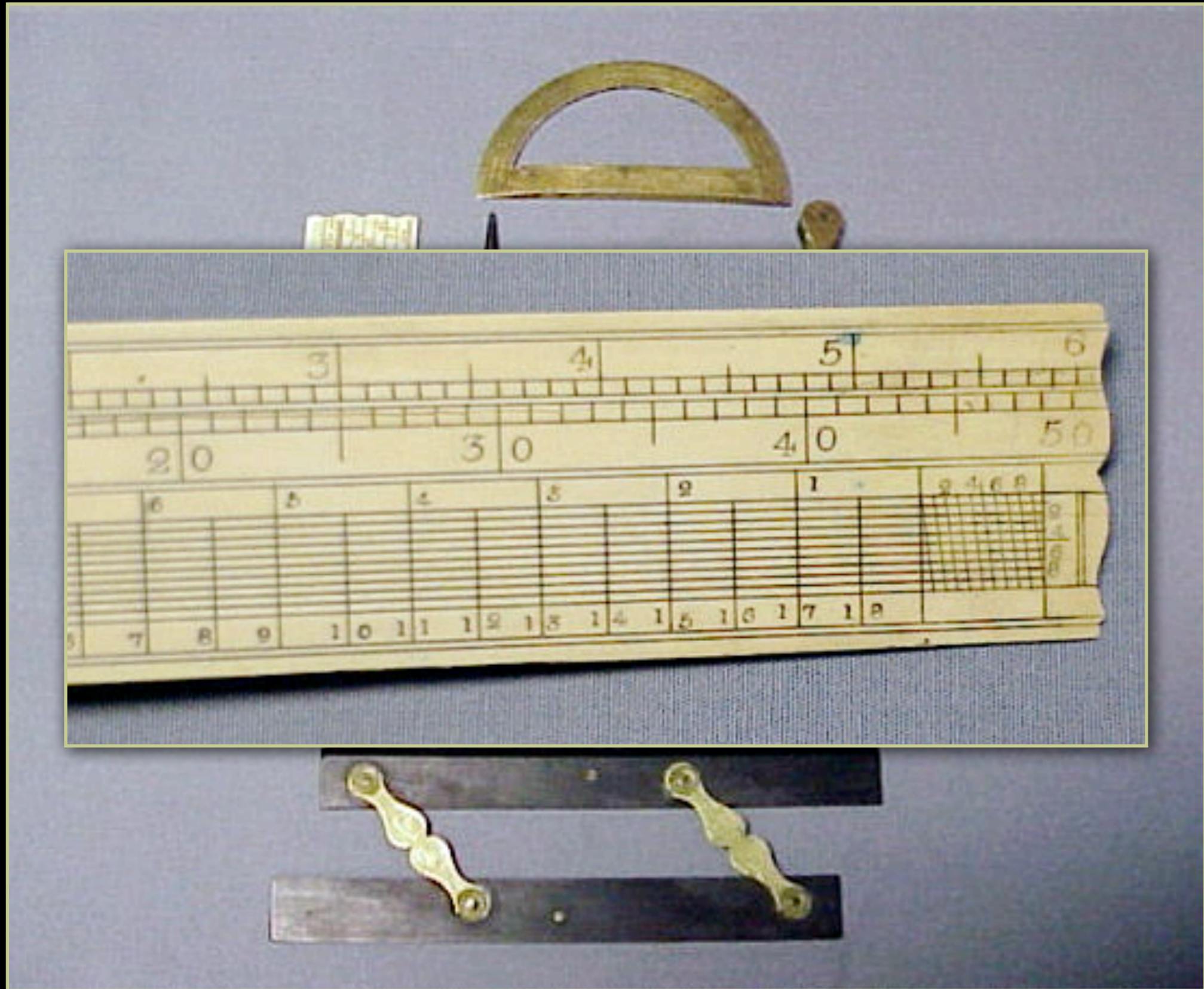
Drafting Set in Shagreen Case
18th Century
(Sharpsburg Arsenal)



Drafting Set in Shagreen Case
18th Century
(Sharpsburg Arsenal)



Drafting Set in Shagreen Case
18th Century
(Sharpsburg Arsenal)



Drafting Set in Shagreen Case
18th Century
(Sharpsburg Arsenal)



Drafting Instrument Set in a Green Shagreen Case
18th Century
(Guilford Courthouse National Military Park)



English Drafting Instruments in a Shagreen Case
by John Dolland c. 1755-1760
(Metropolitan Museum of Arts)



English Pocket Drafting Set
18th Century
(Fleaglass.com)



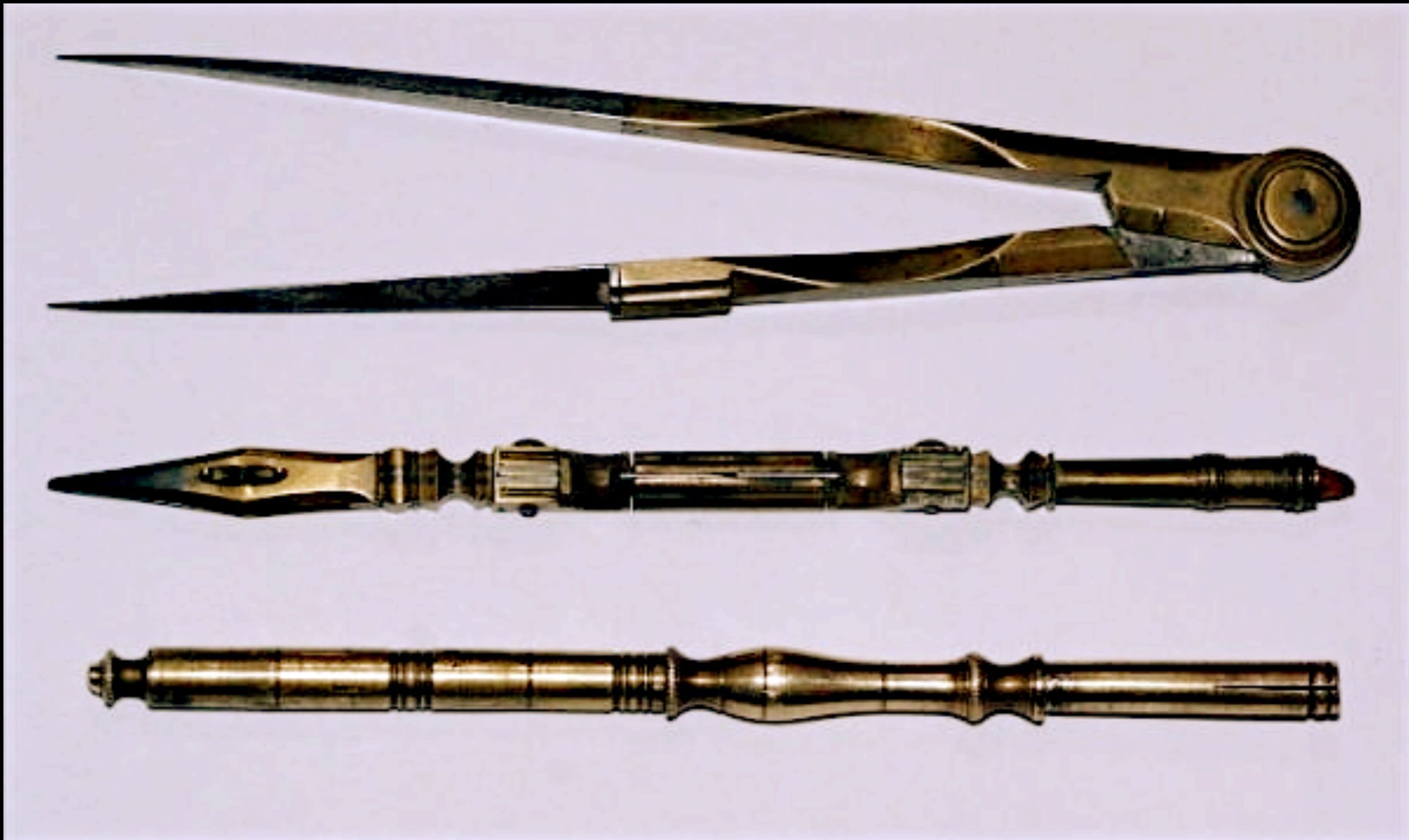
English Pocket Drafting Set
18th Century
(Fleaglass.com)



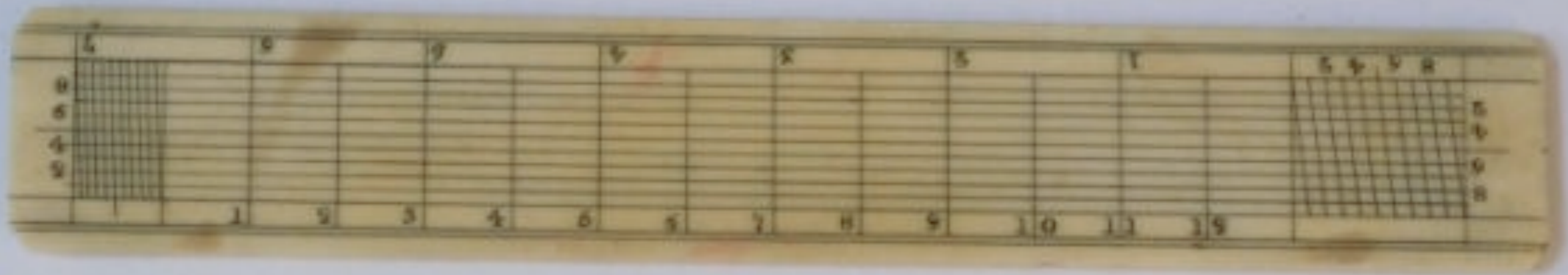
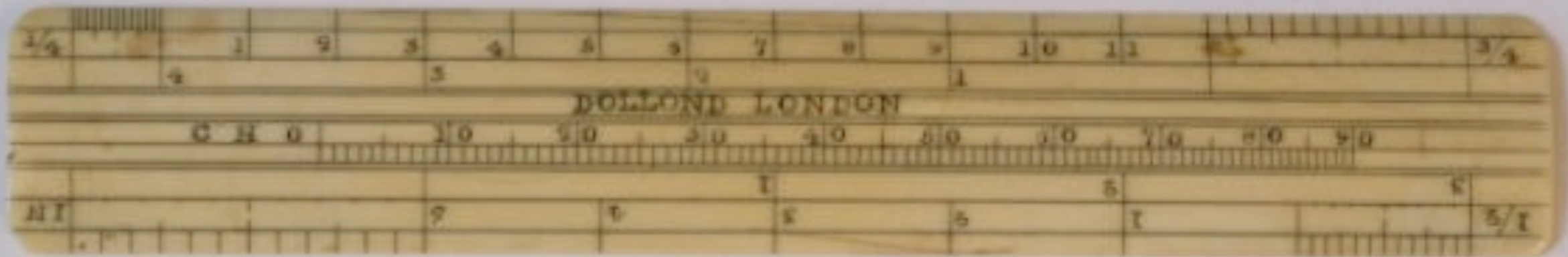
English Pocket Drafting Set
18th Century
(Fleaglass.com)



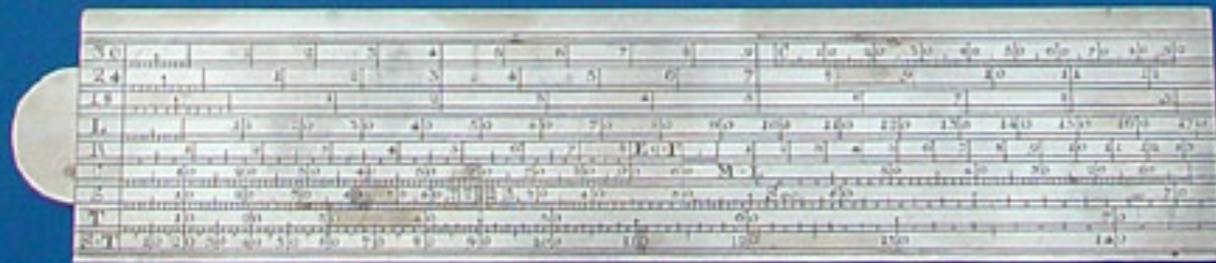
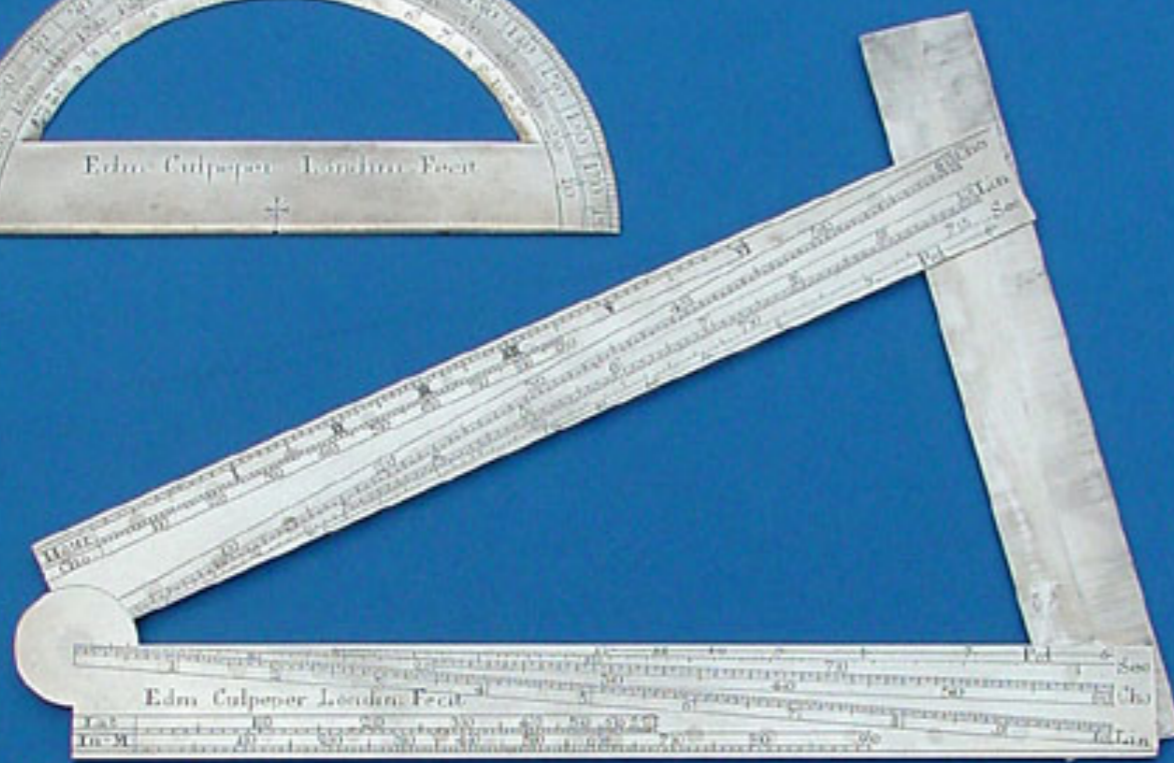
English Pocket Drafting Set
18th Century
(Fleaglass.com)



English Pocket Drafting Set
18th Century
(Fleaglass.com)

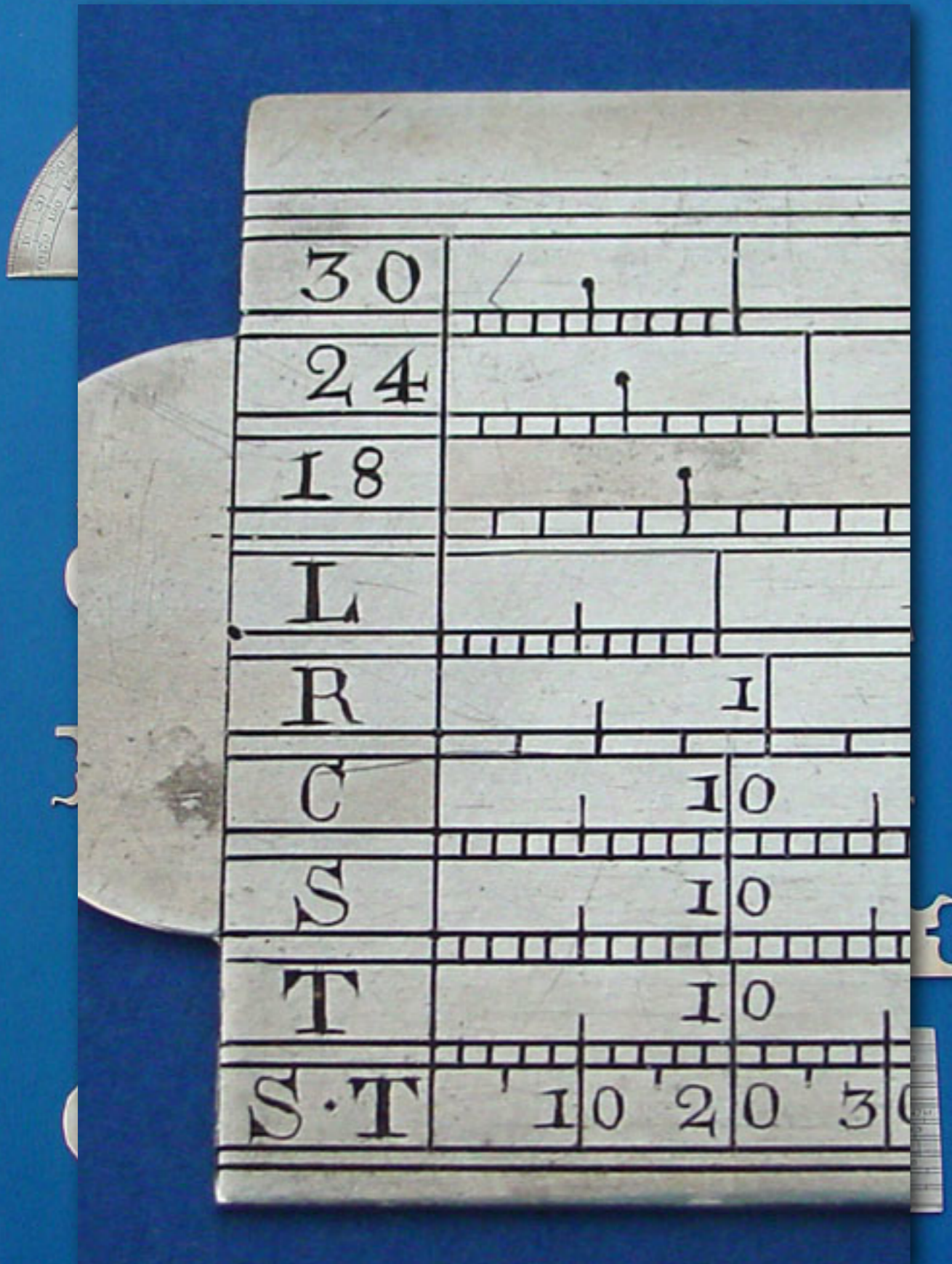


English Pocket Drafting Set
18th Century
(Fleaglass.com)



English Silver Drafting Instruments
by Edmund Culpeper
"Edm. Culpeper Londini Fecit"
c. 1725 - 1750
(Tesseract - Early Scientific Instruments)

Edm. Culpeper Londini Fecit



English Silver Drafting Instruments
by Edmund Culpeper
"Edm. Culpeper Londini Fecit"
c. 1725 - 1750
(Tesseract - Early Scientific Instruments)

Edm. Culpeper Londini Fecit



German Drafting Instrument Set

c. 1750

(Fleaglass.com)



German Drafting Instrument Set

c. 1750

(Fleaglass.com)



German Drafting Instrument Set

c. 1750

(Fleaglass.com)



German Drafting Instrument Set

c. 1750

(Fleaglass.com)

Dividers



European Wrought Iron Dividers
Late 17th - 18th Century
(Tesseract - Early Scientific Instruments)



Proportional Dividers marked "AE"
17th Century
(Fleaglass.com)



German Proportional Dividers
c. 1780
(Fleaglass.com)



French Proportional Dividers
DIEBOLT & FAHLMER a Strasbourg
Late 18th Century
(Fleaglass.com)

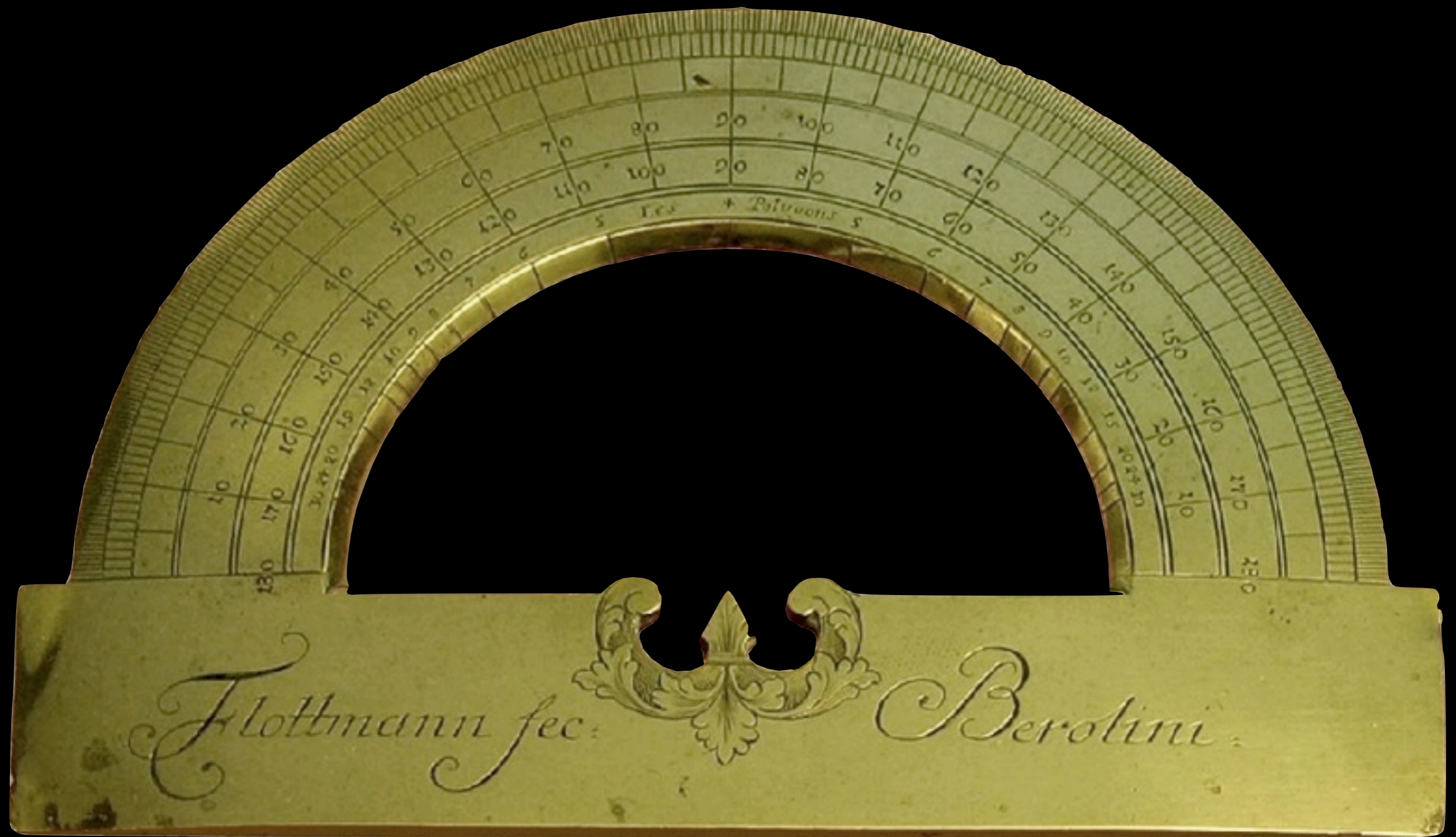


Surveyor's Divider
18th Century
(National Park Service)



Recreated Continental Engineers
(Department of the Geographer to the Army 1777 - 1783)

Protractors



Surveyor's Protractor
18th Century



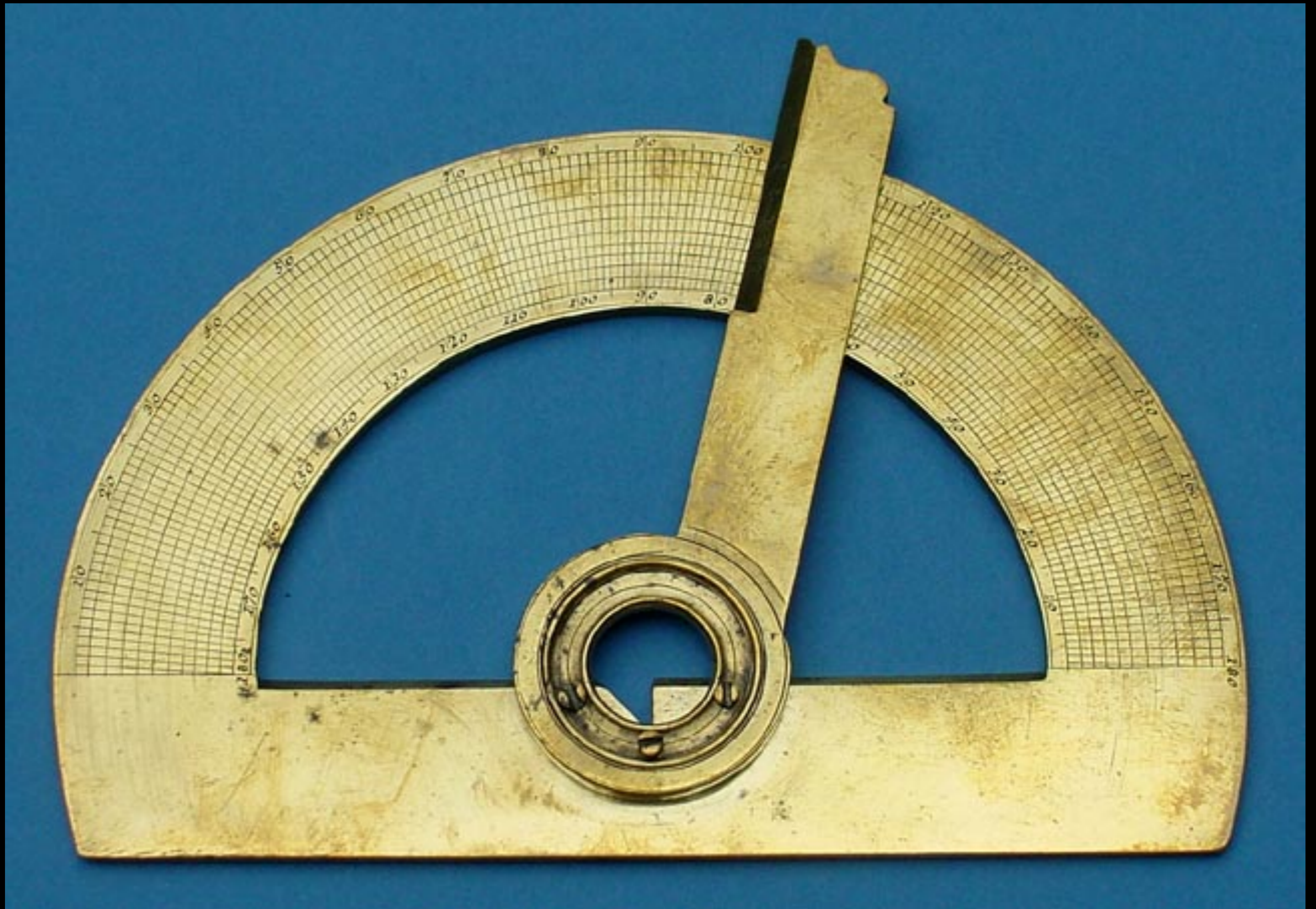
Brass Protactor signed "Fahlmer & Diebolt a Strasbourg"
Mid 18th Century
(Fleaglass.com)



Brass Protractor signed "Au Griffon, Quai de l'Horloge A Paris"
Late 18th Century
(Fleaglass.com)



Recreated Continental Engineers
(Department of the Geographer to the Army 1777 - 1783)

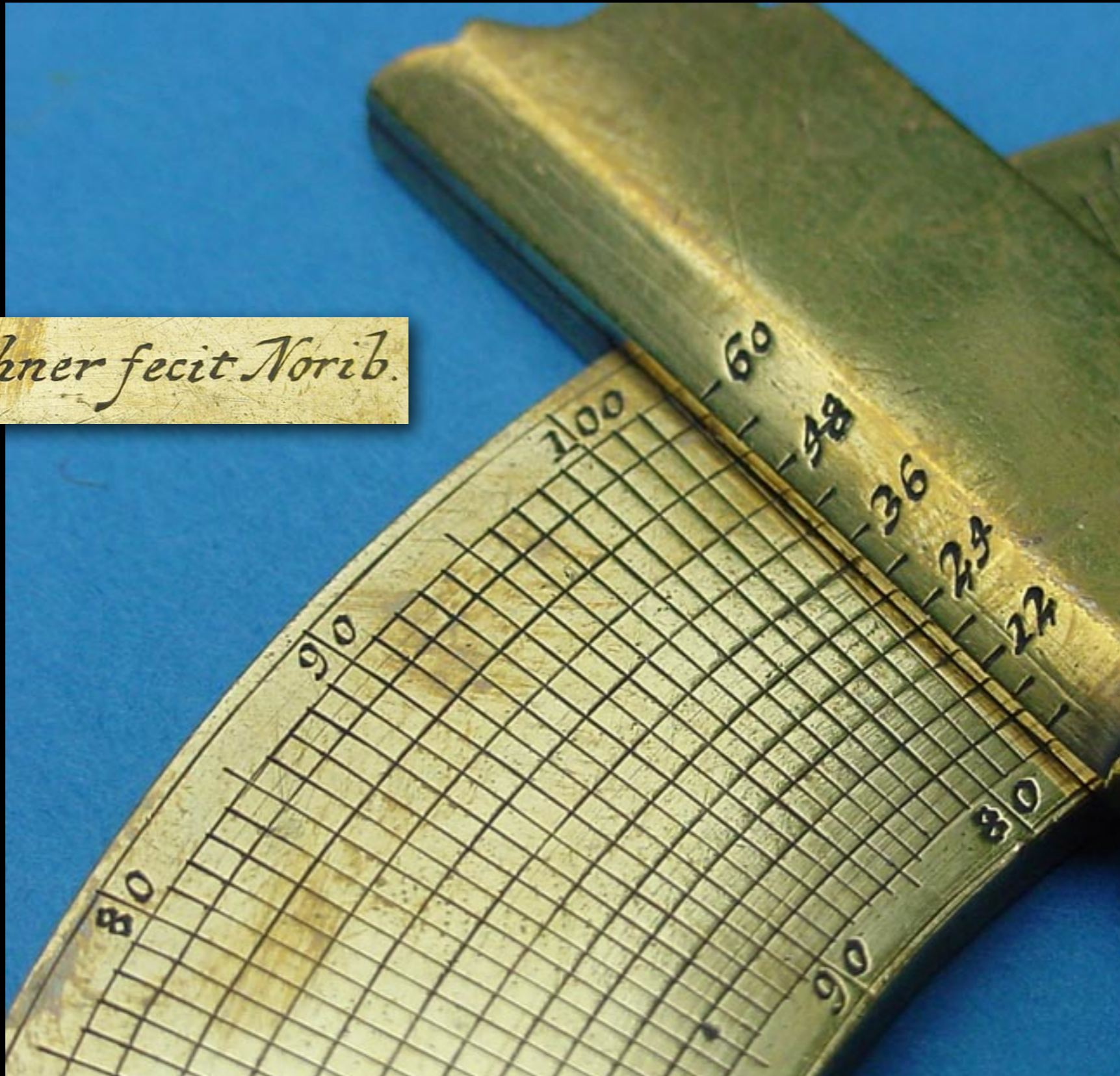


German Nuremberg Protractor with Transversal Interpolation

c. 1725 - 1750

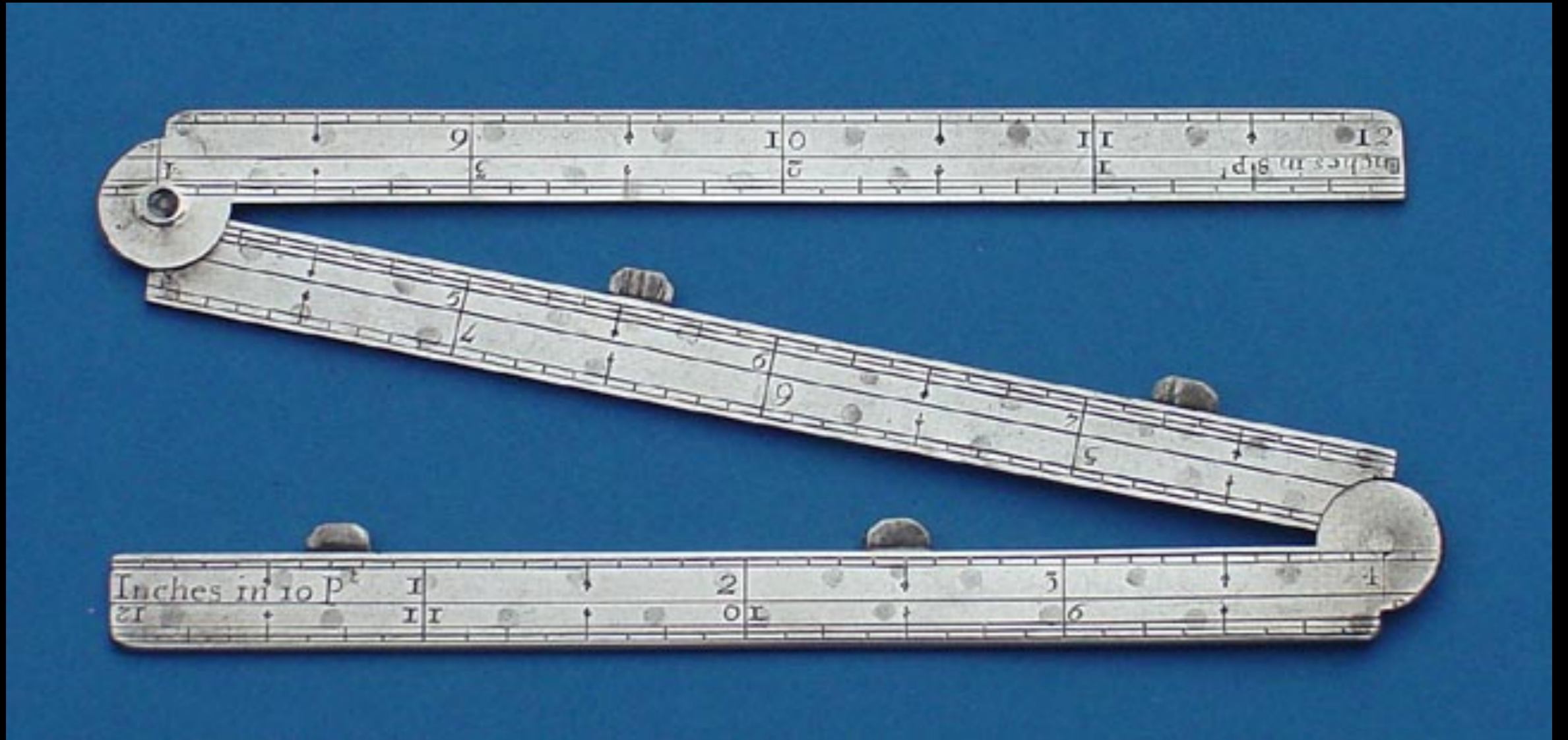
(Tesseract - Early Scientific Instruments)

J.G. Püschner fecit Norib.



German Nuremberg Protractor with Transversal Interpolation
c. 1725 - 1750
(Tesseract - Early Scientific Instruments)

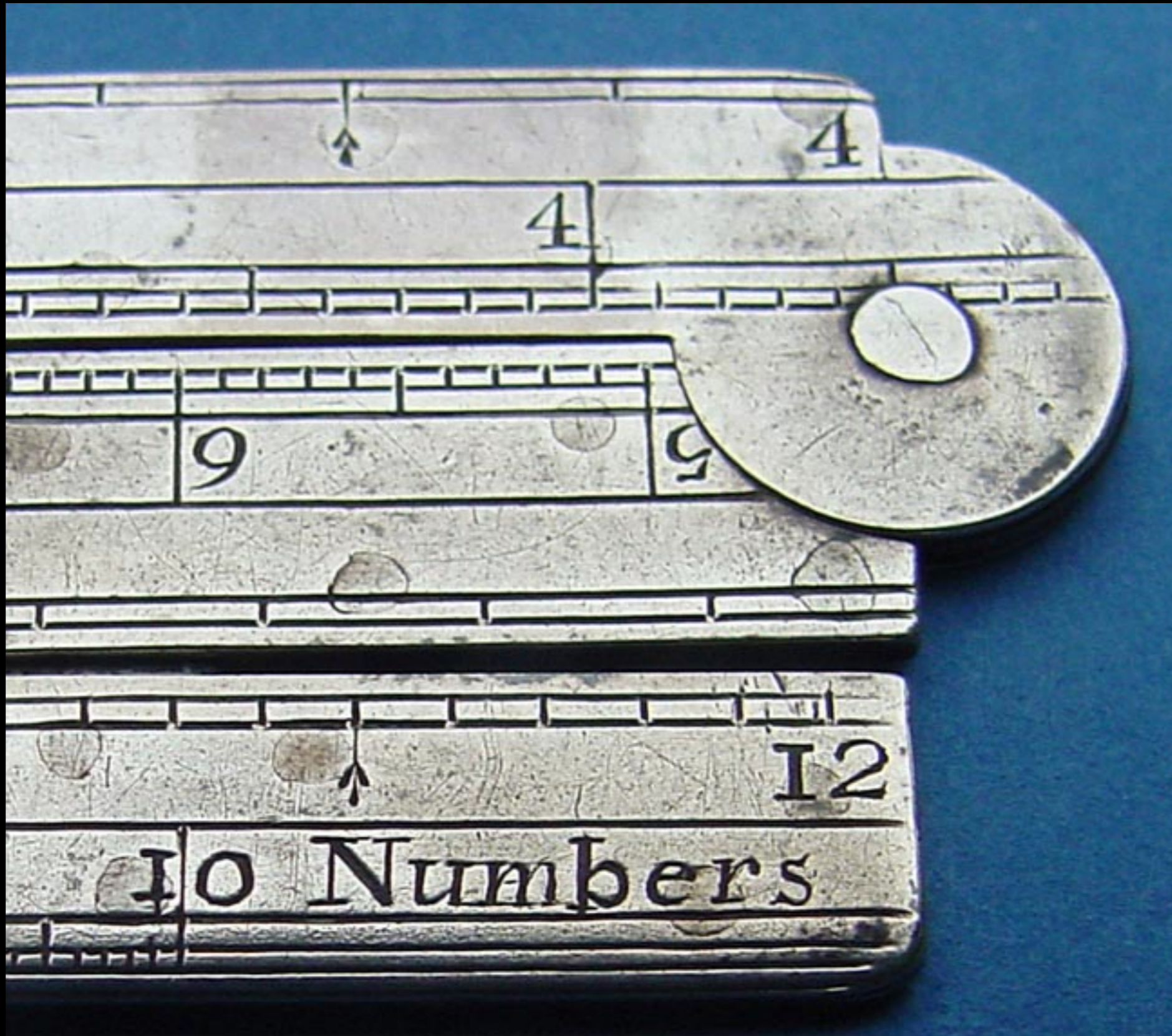
Rules & Sectors



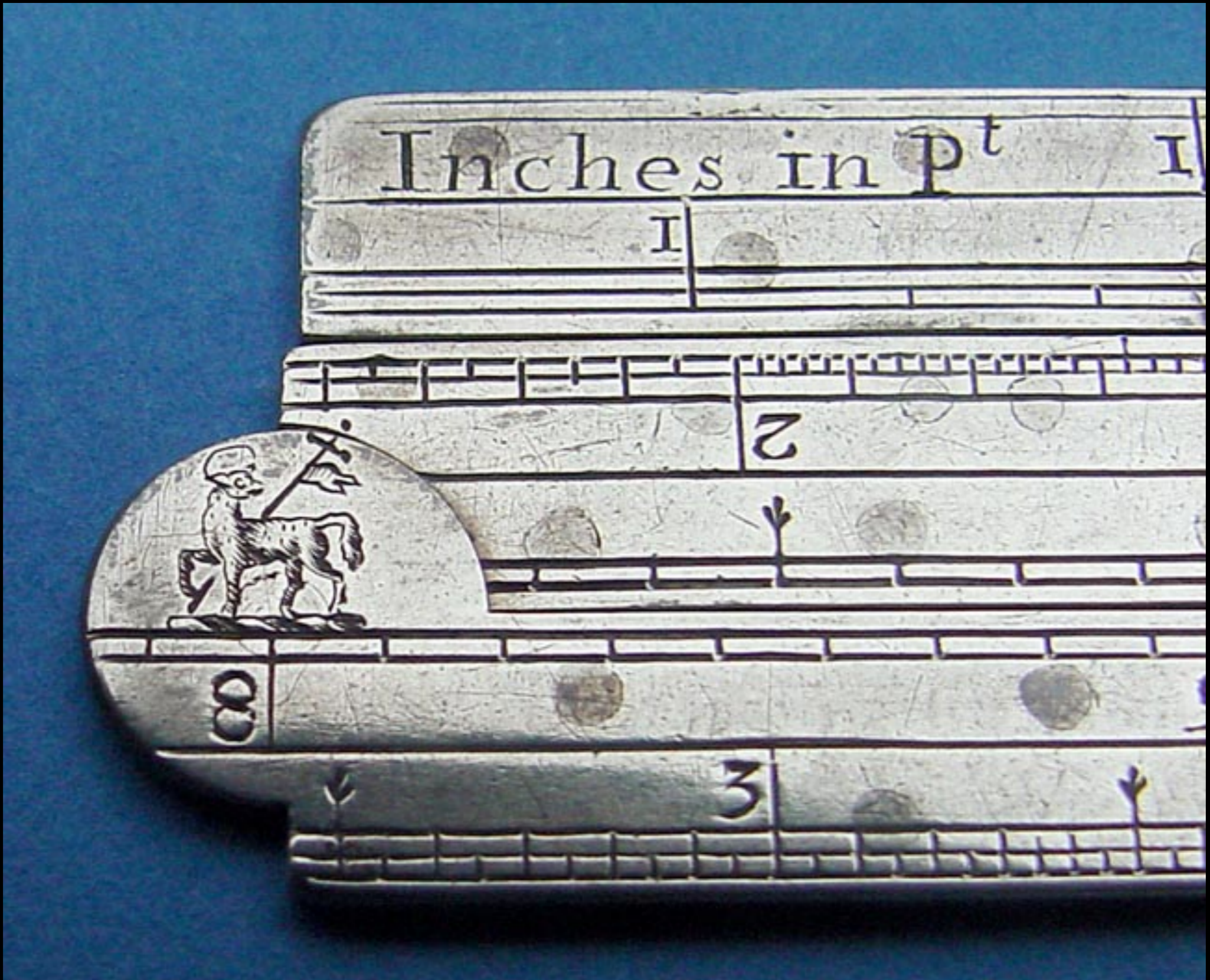
English Cleric's Three Fold Silver Linear Logarithmic Rule

c. 1700

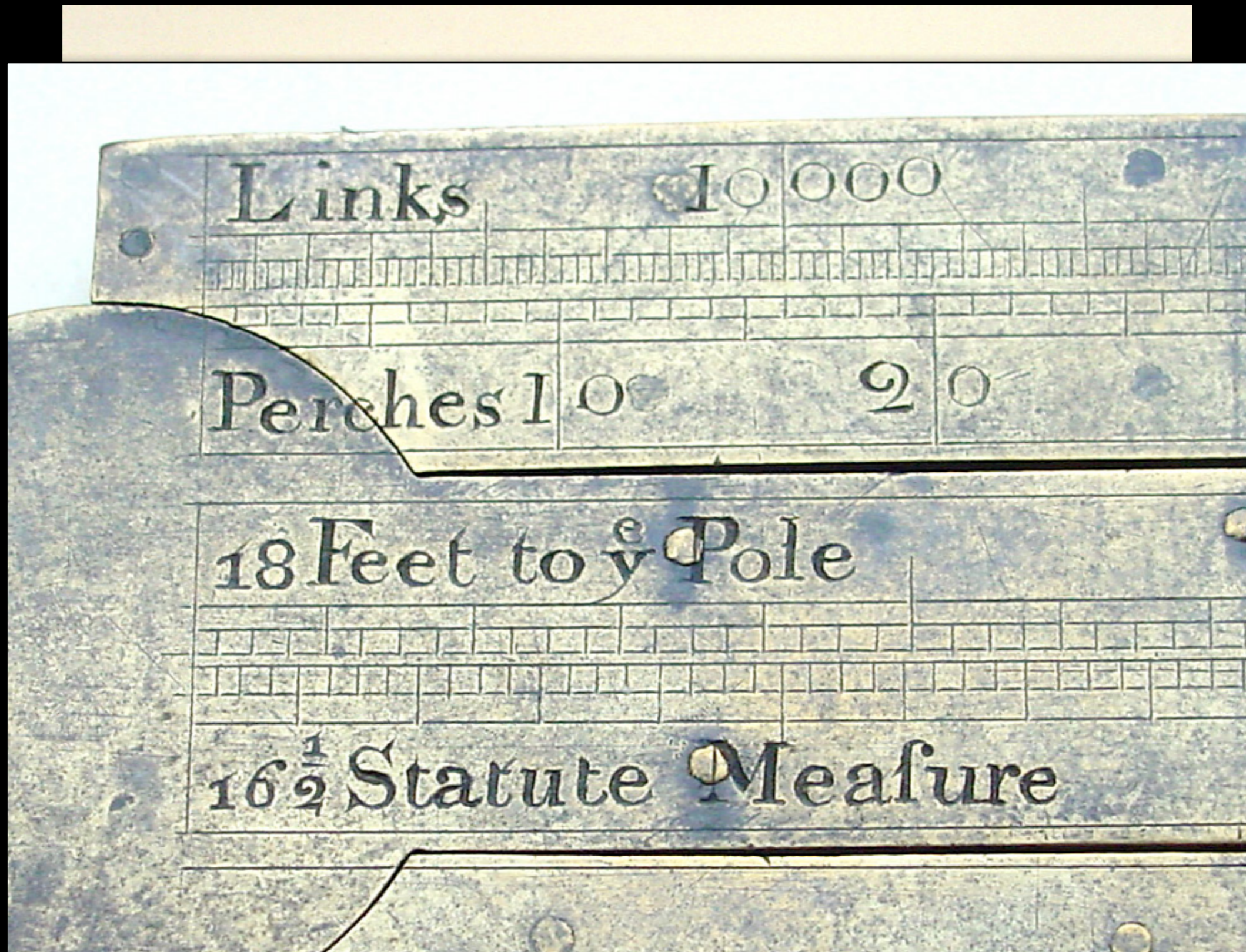
(Tesseract - Early Scientific Instruments)



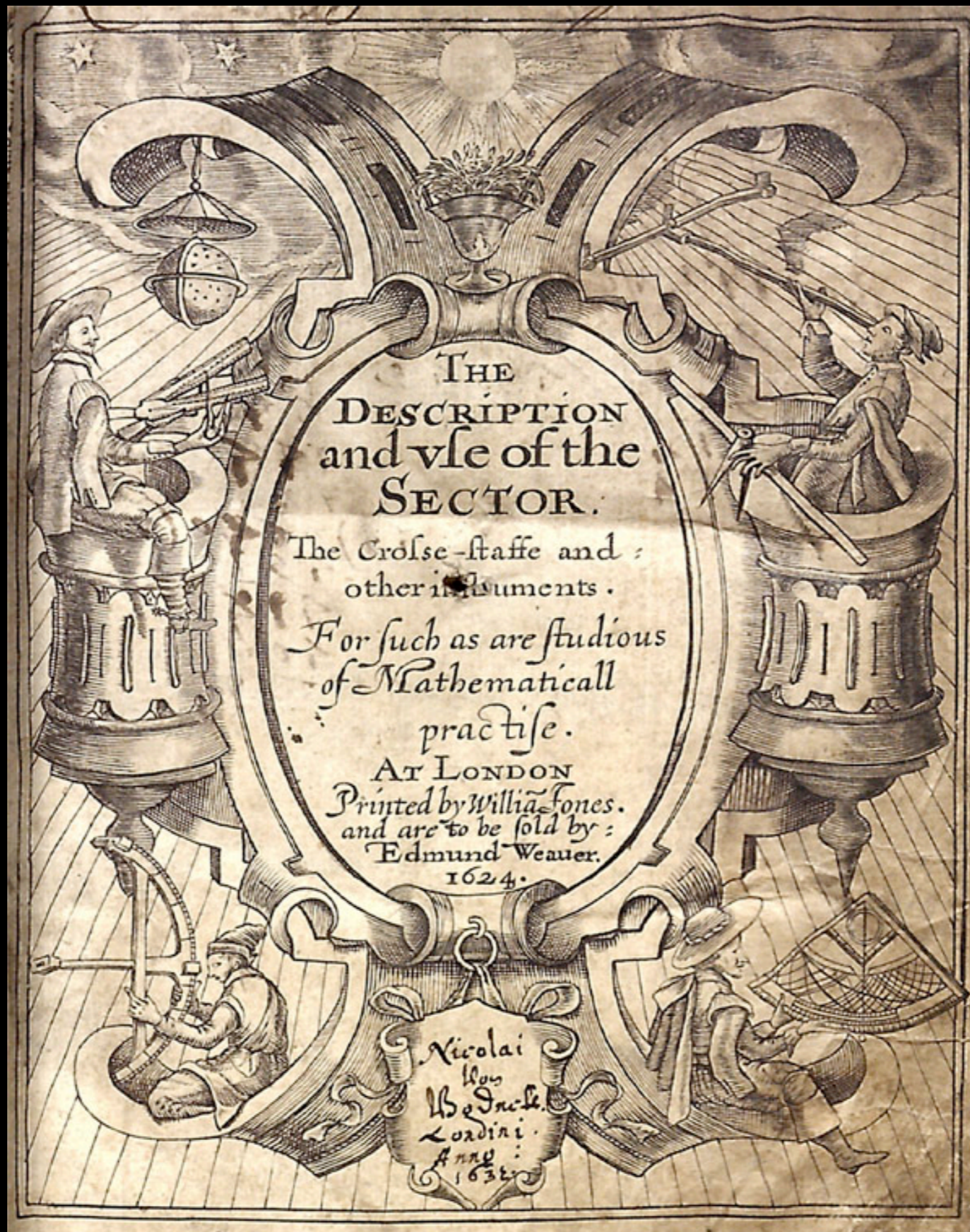
English Cleric's Three Fold Silver Linear Logarithmic Rule
c. 1700
(Tesseract - Early Scientific Instruments)



English Cleric's Three Fold Silver Linear Logarithmic Rule
c. 1700
(Tesseract - Early Scientific Instruments)



English Surveyor's Boxwood Three Arm Conversion Rule
First Half 18th Century
(Tesseract - Early Scientific Instruments)



“The DESCRIPTION and use of the SECTOR”

London 1624

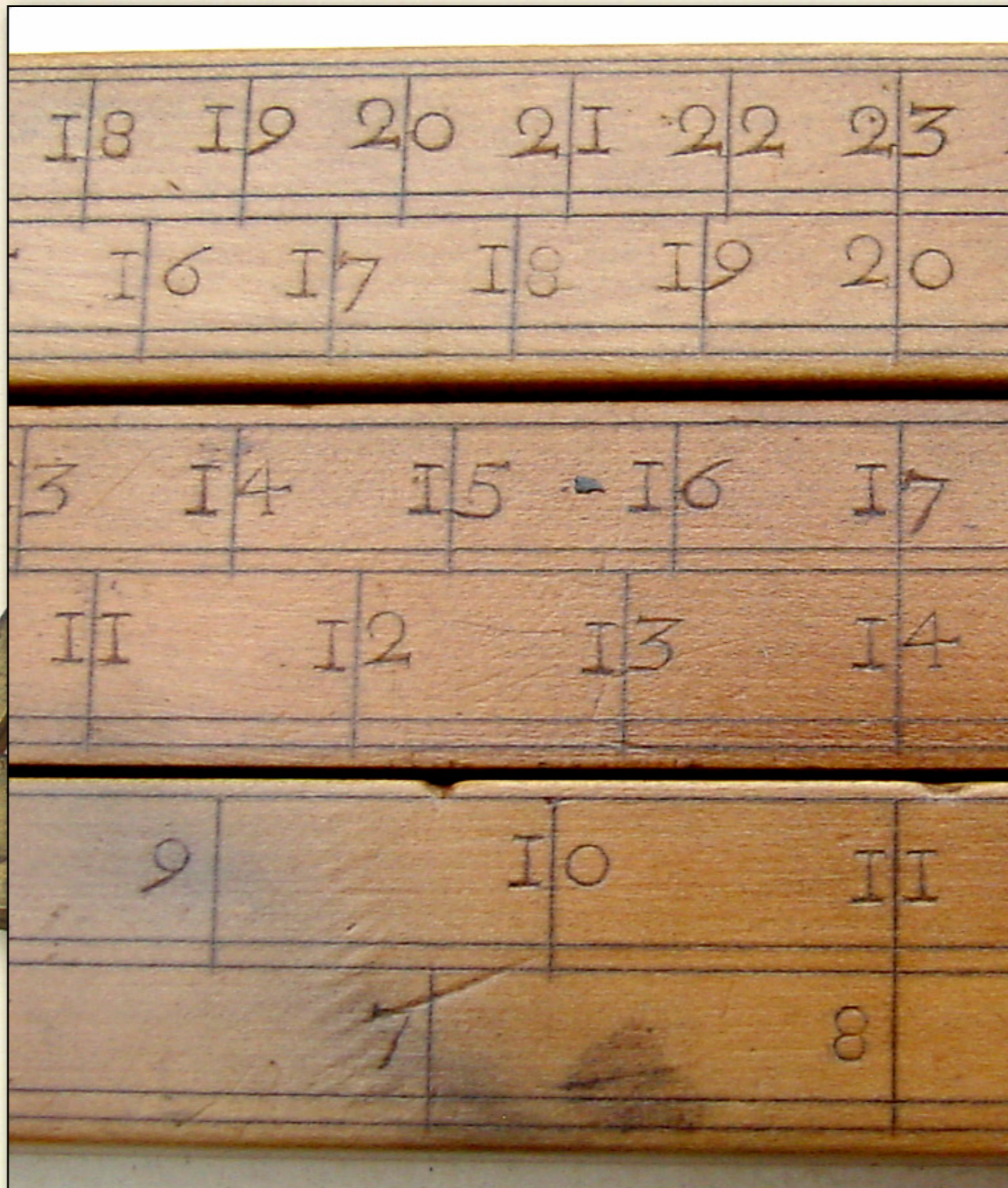
(Smithsonian)



French Brass Sector Rule
Signed Butterfield, Paris c. 1680-1724



English Surveyor's Boxwood Three Arm Conversion Rule
First Half 18th Century
(Tesseract - Early Scientific Instruments)

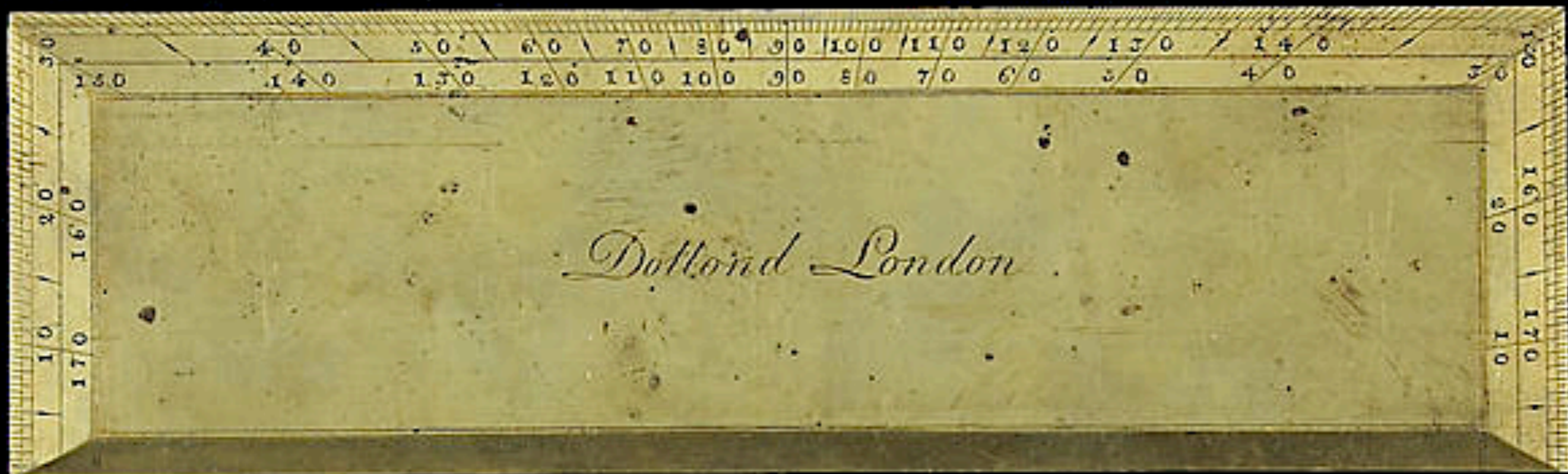


English Surveyor's Boxwood Three Arm Conversion Rule
First Half 18th Century
(Tesseract - Early Scientific Instruments)

Thomas Harman 1758



Brass Scale Rule by Thomas Harman
Dated 1758
(Bonhams - William H. Guthman Collection)



Brass Rule by Dollond of London
c. 18th - Early 19th Century
(Bonhams - William H. Guthman Collection)



Silver Surveyor's Scale
by William Collier of London 1720



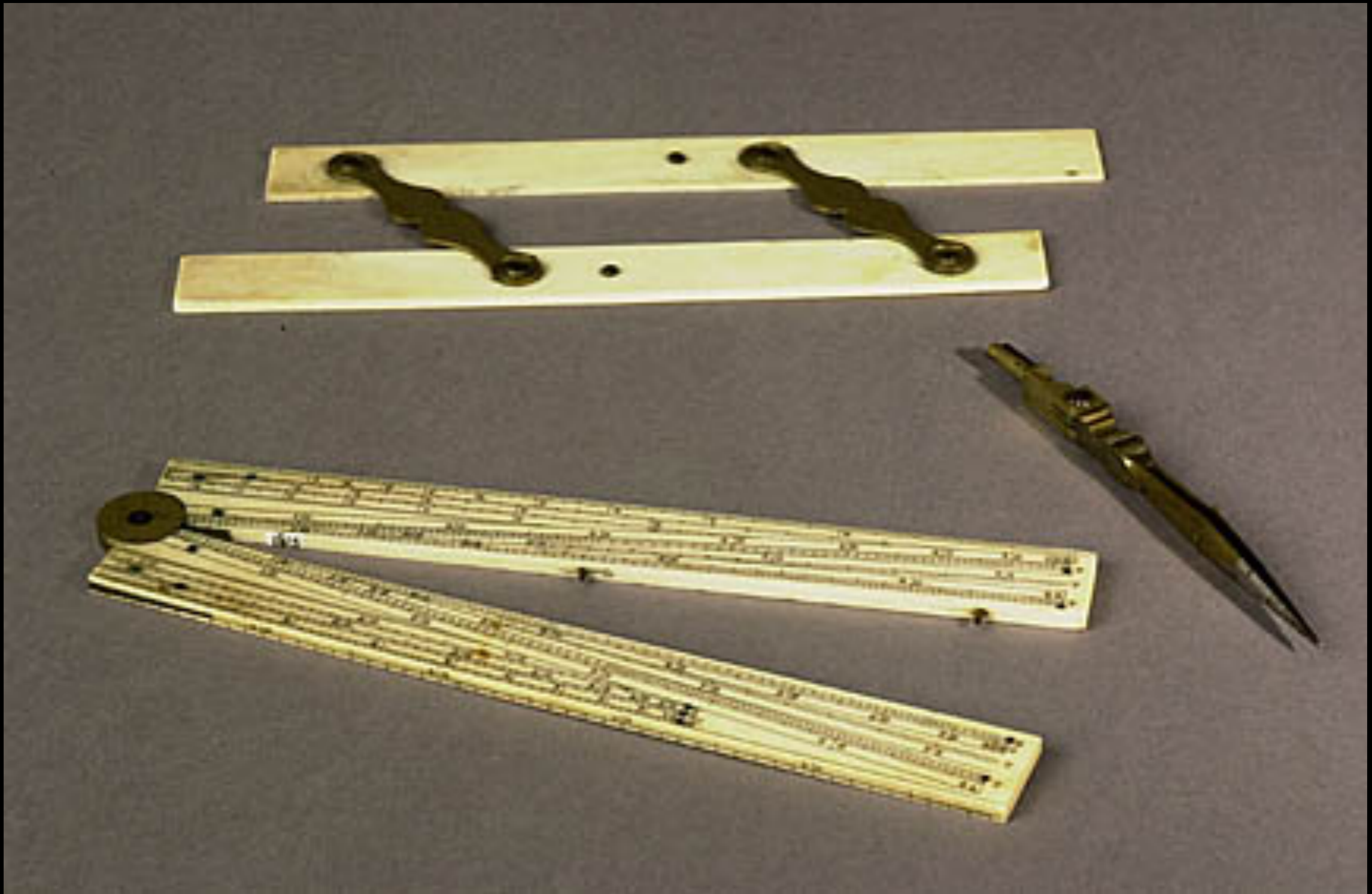
Demy Pied de Roy signed "Butterfield a Paris"
Late 17th Century
(Fleaglass.com)



French Sector signed "Meurand a Paris"
18th Century
(Fleaglass.com)

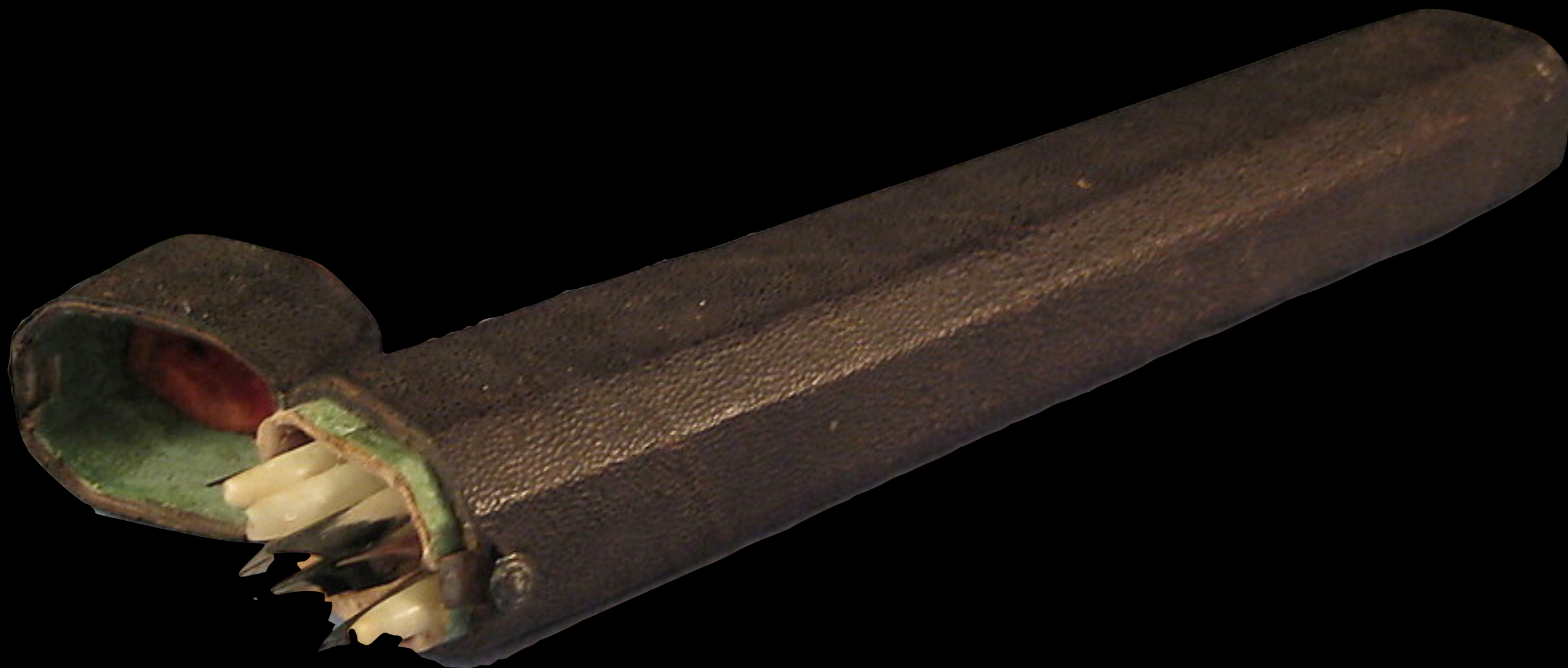


Recreated Continental Engineers
(Department of the Geographer to the Army 1777 - 1783)



Surveyor's Instruments of Parallel Rules, Ruling Pen, and Sector
18th Century
(National Park Service)

Pens, Ink & Pencils



Shagreen Case of Quill Pens
Late 18th Century
(Private Collection)



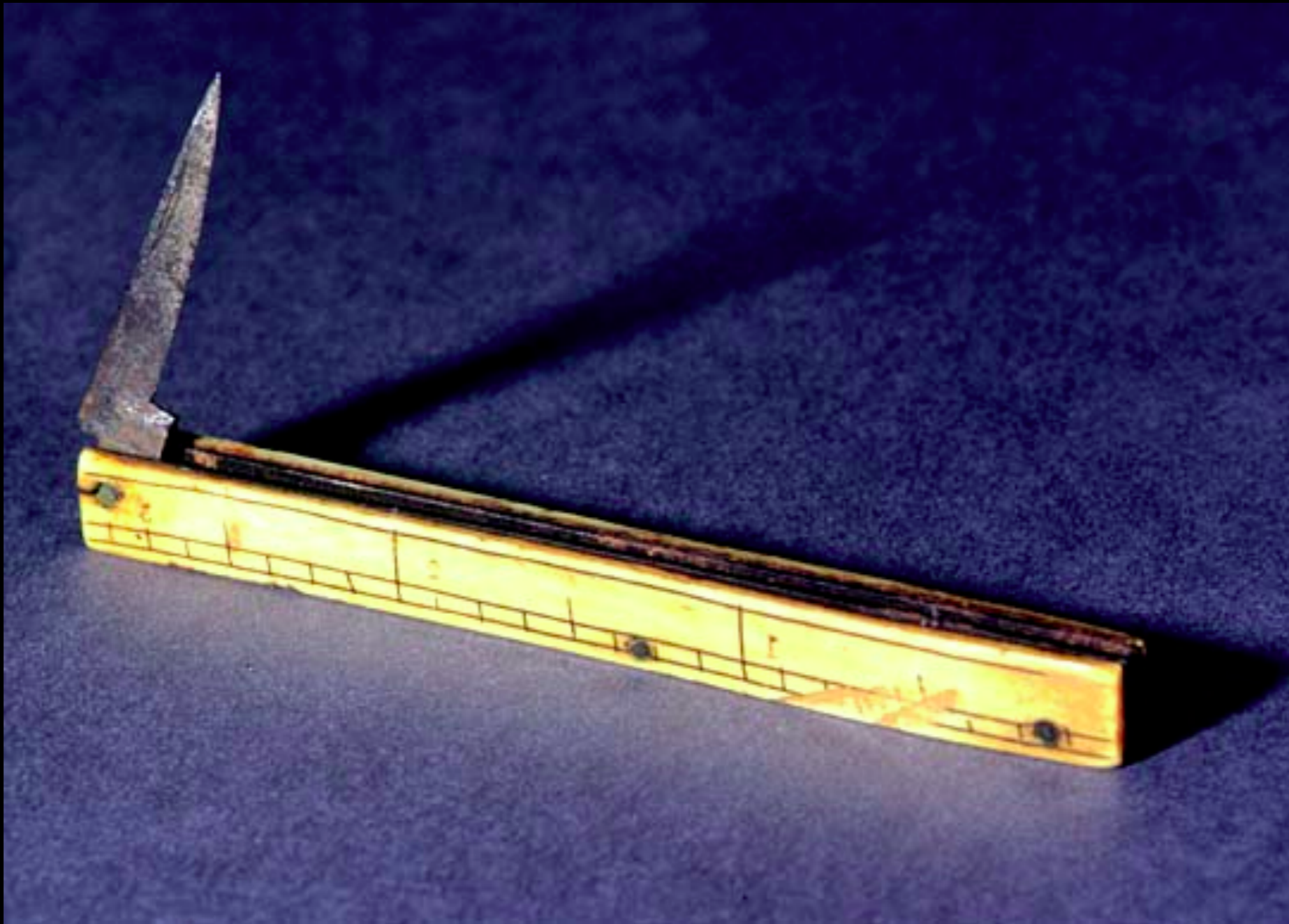
Shagreen Case of Quill Pens
Late 18th Century
(Private Collection)



Shagreen Case of Quill Pens
Late 18th Century
(Private Collection)



Shagreen Case of Quill Pens
Late 18th Century
(Private Collection)



Pen Knife with Ruler
18th Century
(Guilford Courthouse National Military Park)



Steel & Tortoise Shell Pen Knife
18th Century
(Guilford Courthouse National Military Park)



British Officer's Traveling Writing Box
18th Century
(Bonhams - William H. Guthman Collection)



Traveling Writing Box
18th Century
(Bonhams - William H. Guthman Collection)



English Fruitwood Pounce Pot
c. 1720
(Christie's Auction House)



English Lignum Vitae Pounce Pot

c. 1750

(Christie's Auction House)

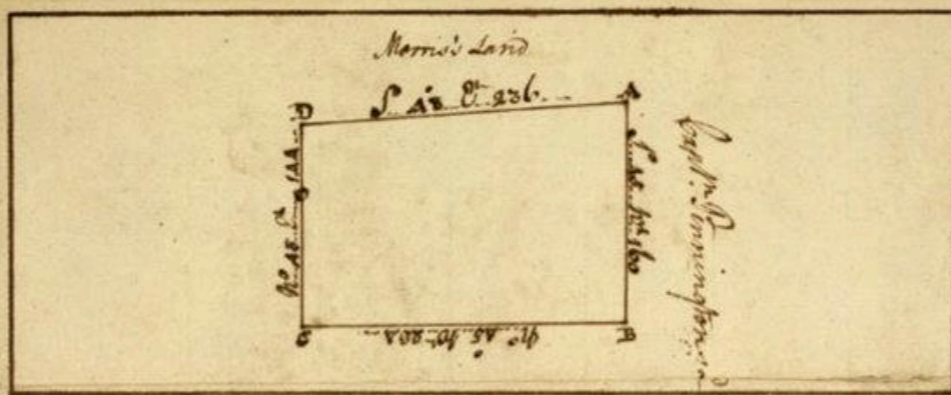


English Pencil Holder
Late 18th Century
(Fleaglass.com)



French Pencil Holder & Drawing Instrument
Late 18th Century
(Fleaglass.com)

Surveys
&
Cartography



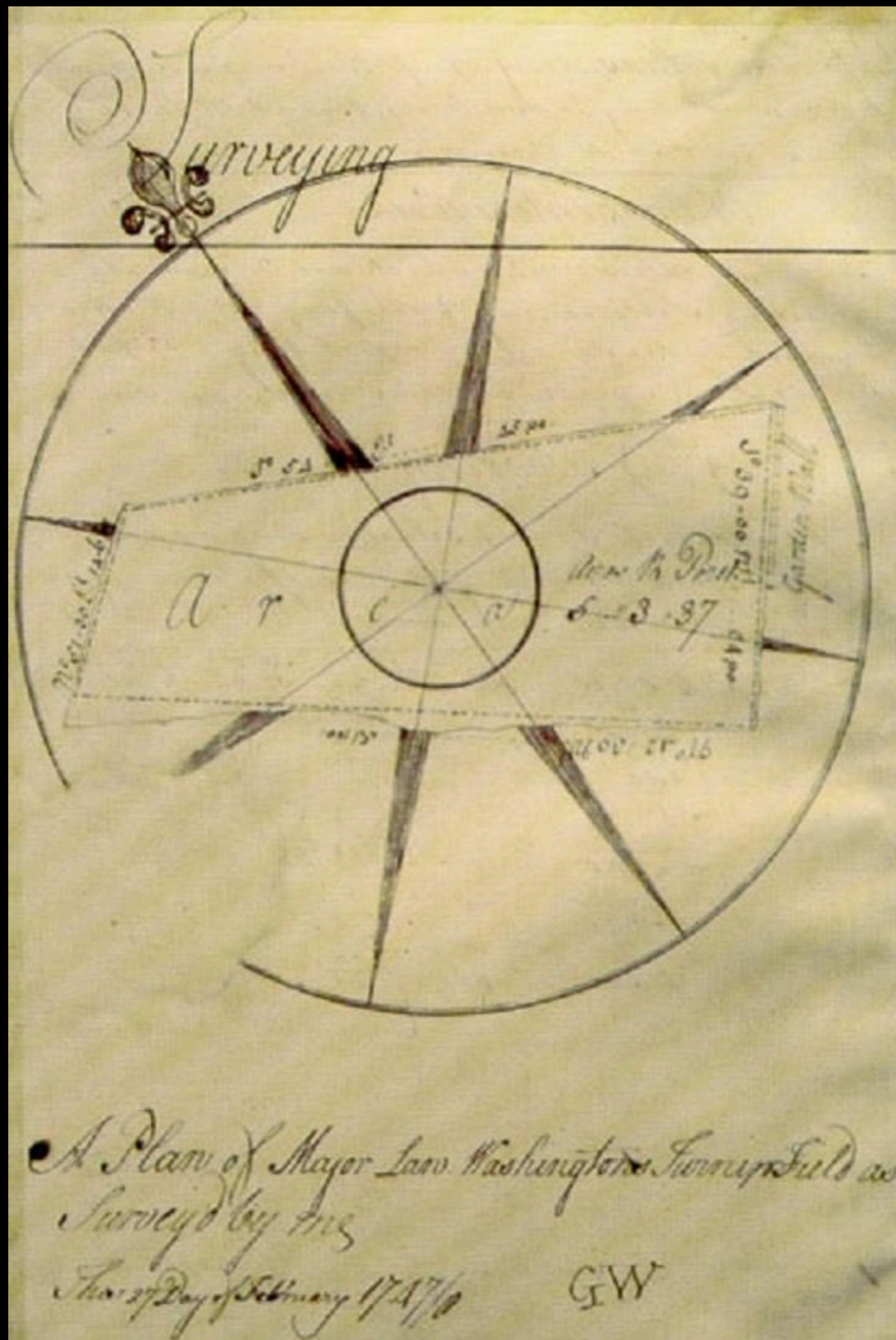
Pursuant to a warrant from the Proprietors Office to Me directed I have Surveyed for Mr. John Lindsey a certain tract of waste and ungranted Land in Frederick County bounded as follows to wit

Beginning at a Walnut and Red Oak Morris's Patent corner and in the line of a late survey made for Isaac Pennington and extended along the said Pennington's line S. 48. E. 144 paces to a white Oak and double white hick near a limestone Rock thence N. 48. W. 224 paces to a Red Oak and locust sapling in the corner thence N. 48. E. 92 paces to Capt. Pennington's corner and thence to Wood Oak Morris's E. thence with his line S. 48. E. 236 paces to the top corner Two hundred and Twenty three Acres - Nos. 17th & 1750

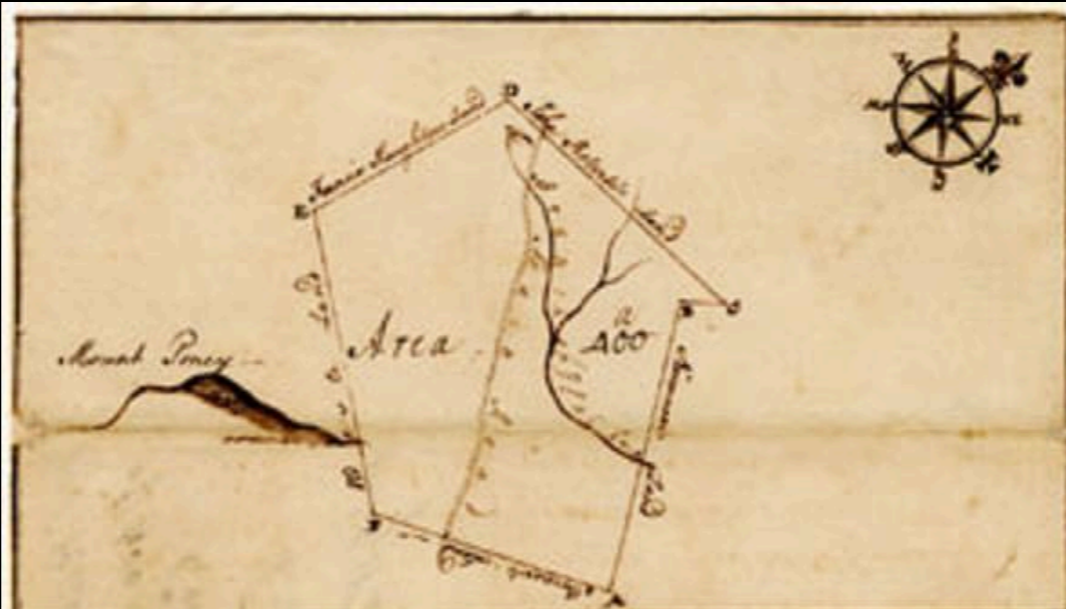
Henry Hendrick
Stephen Sebastian } 1750
John Lindsey - Master

by George Washington

George Washington Plat of a Survey for John Lindsey
223 Acres of Land in Frederick Co., Virginia 1750



1747 School Book - George Washington
"A Plan of Major L- Washington's Turnip Field"



Pursuant to a Warrant from the Proprietors Office granted to Mr. Richard
 Dawson I have surveyed as followeth

Beginning at three white Oaks in Norman's Line and coming
 to the said Norman's north of the said land and extending thence N 32 E 90 rods
 to a Branch of Hill Run and five hundred and eighty rods to a large white Oak corner
 to the said Norman thence along another of his Lines N 30 E thirty four rods to three
 white Oaks and a Hickory corner to the said Norman and John Work thence along Robert's
 Line S 70 E one hundred and eighty three rods to the Road and five hundred and thirty rods
 to two white Oaks in a Road corner to the said Robert and Mr. Francis Naughton thence with
 the said Naughton's Line S 70 E one hundred and thirty four rods to three white Oaks in
 the said Naughton's Line thence leaving his line and running S 65 W 80 rods and
 thirty six rods to three white Oaks amongst a parcel of white Oaks & Barren corner thence
 with his Line N 30 E one hundred and eighty six rods to the beginning containing
 four hundred acres

William Naughton
 Francis Naughton
 Robert Naughton

George Washington
 Surveyor
 July 22 1759

1749 Survey by George Washington



Recreated Continental Engineers
(Department of the Geographer to the Army 1777 - 1783)



Mahogany Watercolor Paint Box by Thomas Reeves & Sons, London,
c. 1790
(Mount Vernon)

A Plan of Alexandria now Belhaven

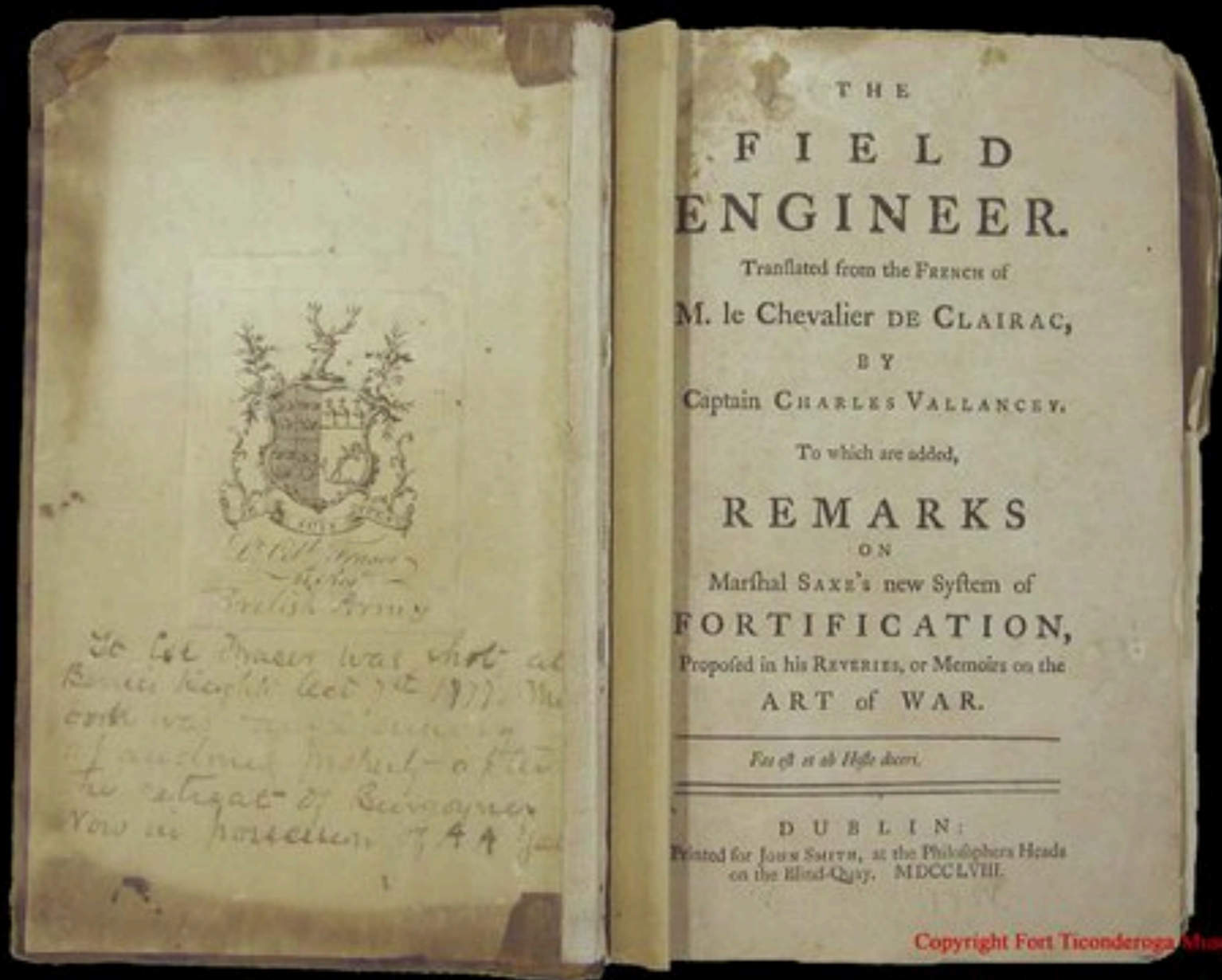


Belhaven Water

Potomack River

- 1 Belhaven Water
- 2 Belhaven Water
- 3 Belhaven Water
- 4 Belhaven Water
- 5 Belhaven Water
- 6 Belhaven Water
- 7 Belhaven Water
- 8 Belhaven Water
- 9 Belhaven Water
- 10 Belhaven Water
- 11 Belhaven Water
- 12 Belhaven Water
- 13 Belhaven Water
- 14 Belhaven Water
- 15 Belhaven Water
- 16 Belhaven Water
- 17 Belhaven Water
- 18 Belhaven Water
- 19 Belhaven Water
- 20 Belhaven Water
- 21 Belhaven Water
- 22 Belhaven Water
- 23 Belhaven Water
- 24 Belhaven Water
- 25 Belhaven Water
- 26 Belhaven Water
- 27 Belhaven Water
- 28 Belhaven Water
- 29 Belhaven Water
- 30 Belhaven Water
- 31 Belhaven Water
- 32 Belhaven Water
- 33 Belhaven Water
- 34 Belhaven Water
- 35 Belhaven Water
- 36 Belhaven Water
- 37 Belhaven Water
- 38 Belhaven Water
- 39 Belhaven Water
- 40 Belhaven Water
- 41 Belhaven Water
- 42 Belhaven Water
- 43 Belhaven Water
- 44 Belhaven Water
- 45 Belhaven Water
- 46 Belhaven Water
- 47 Belhaven Water
- 48 Belhaven Water
- 49 Belhaven Water
- 50 Belhaven Water

Books



"THE FIELD ENGINEER"

by M. le Chevalier de Clairac, Dublin 1758

Owned by Brigadier General Simon Frasier who was Killed at the Battle of Bemis Heights, October 7, 1777

(A.A. Yale)



Recreated Continental Engineers
(Department of the Geographer to the Army 1777 - 1783)

Acknowledgements

The 18th Century Material Resource Center greatly acknowledges our friends in the Recreated Department of the Geographer (1777 - 1783) for their contributions to this edition. For more information on 18th Century Engineering, Drafting and Surveying, please contact these extremely knowledgeable historians at: www.armygeographer.org



Acknowledgements

The material contained within these slideshows is presented for educational purposes only. The 18th Century Material Culture Resource Center does not personally own any of the items depicted herein and is indebted to the countless museums, libraries, and private collectors who willingly share their collections with the public through the internet. Every attempt has been made to credit these organizations and individuals for their contributions as best as possible.

If there is a question you have regarding a particular item featured within a presentation, please contact the 18th Century Material Culture Resource Center and we will try to answer your inquiry as best as possible. If for any reason you feel there is any item that should not be presented here, or if there is an error in any listing, or if you know the source for any item whose credit is unknown, please inform us and we will make sure your concern is addressed as soon as possible.

Thank you!

- The 18th Century Material Culture Resource Center