

# 18th Century Material Culture: Engineering, Surveying, Drafting, & Cartography - Part II



# Drafting Sets



Brass Compass & Dividers  
Used by Samuel Lane of Stratham, New Hampshire c. 1747  
(New Hampshire Historical Society)



Drafting Set in Shagreen Case  
18th Century  
(Sharpsburg Arsenal)



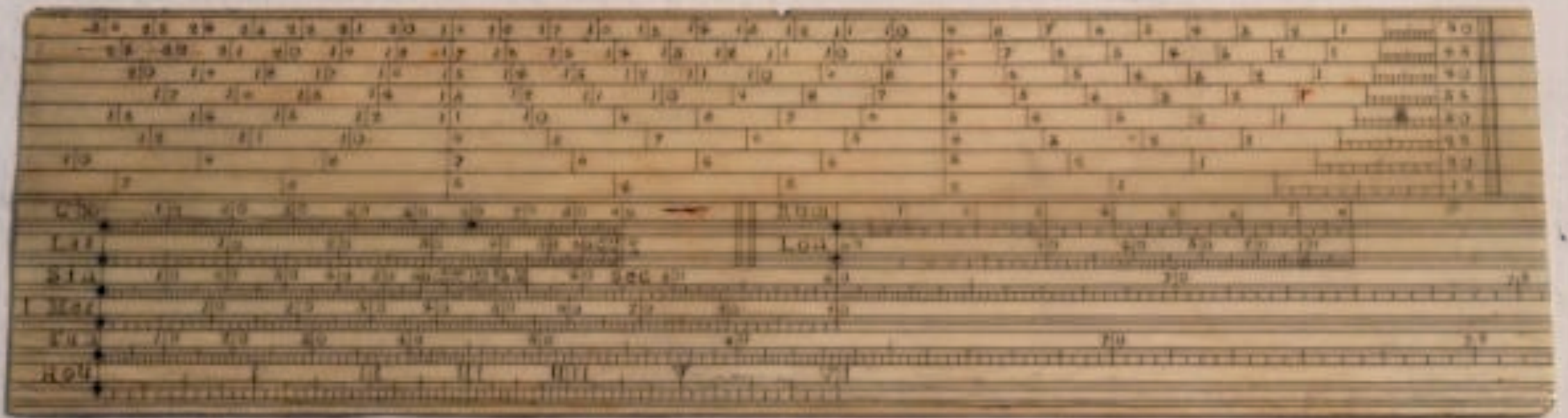
Drafting Set in Shagreen Case  
18th Century  
(Sharpsburg Arsenal)



Drafting Set in Shagreen Case  
18th Century  
(Sharpsburg Arsenal)



Drafting Set in Shagreen Case  
18th Century  
(Sharpsburg Arsenal)



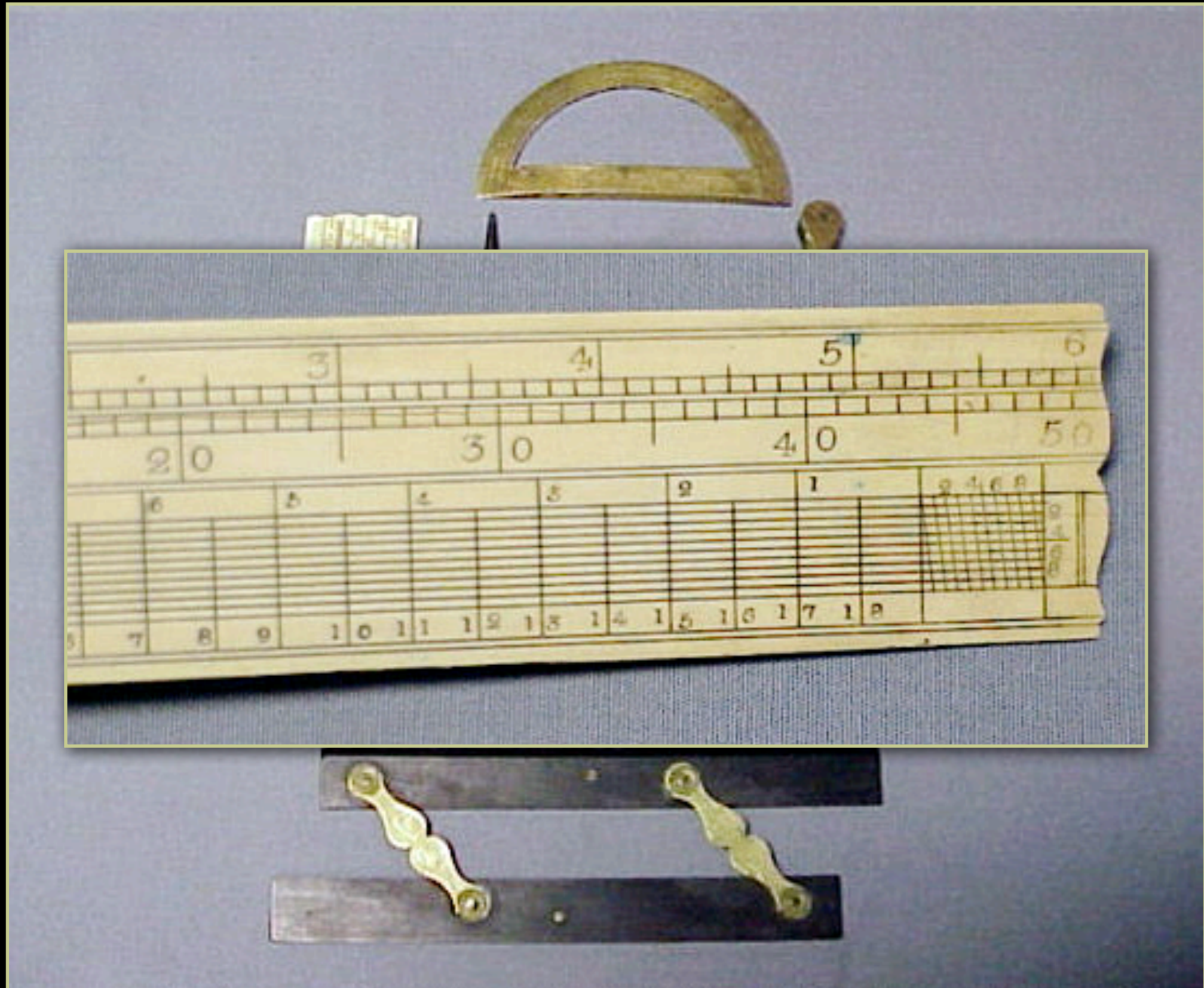
Drafting Set in Shagreen Case  
18th Century  
(Sharpsburg Arsenal)



Drafting Set in Shagreen Case  
18th Century  
(Sharpsburg Arsenal)



Drafting Set in Shagreen Case  
18th Century  
(Sharpsburg Arsenal)



Drafting Set in Shagreen Case  
18th Century  
(Sharpsburg Arsenal)





English Drafting Instruments in a Shagreen Case  
by John Dolland c. 1755-1760  
(Metropolitan Museum of Arts)



English Pocket Drafting Set  
18th Century  
(Fleaglass.com)



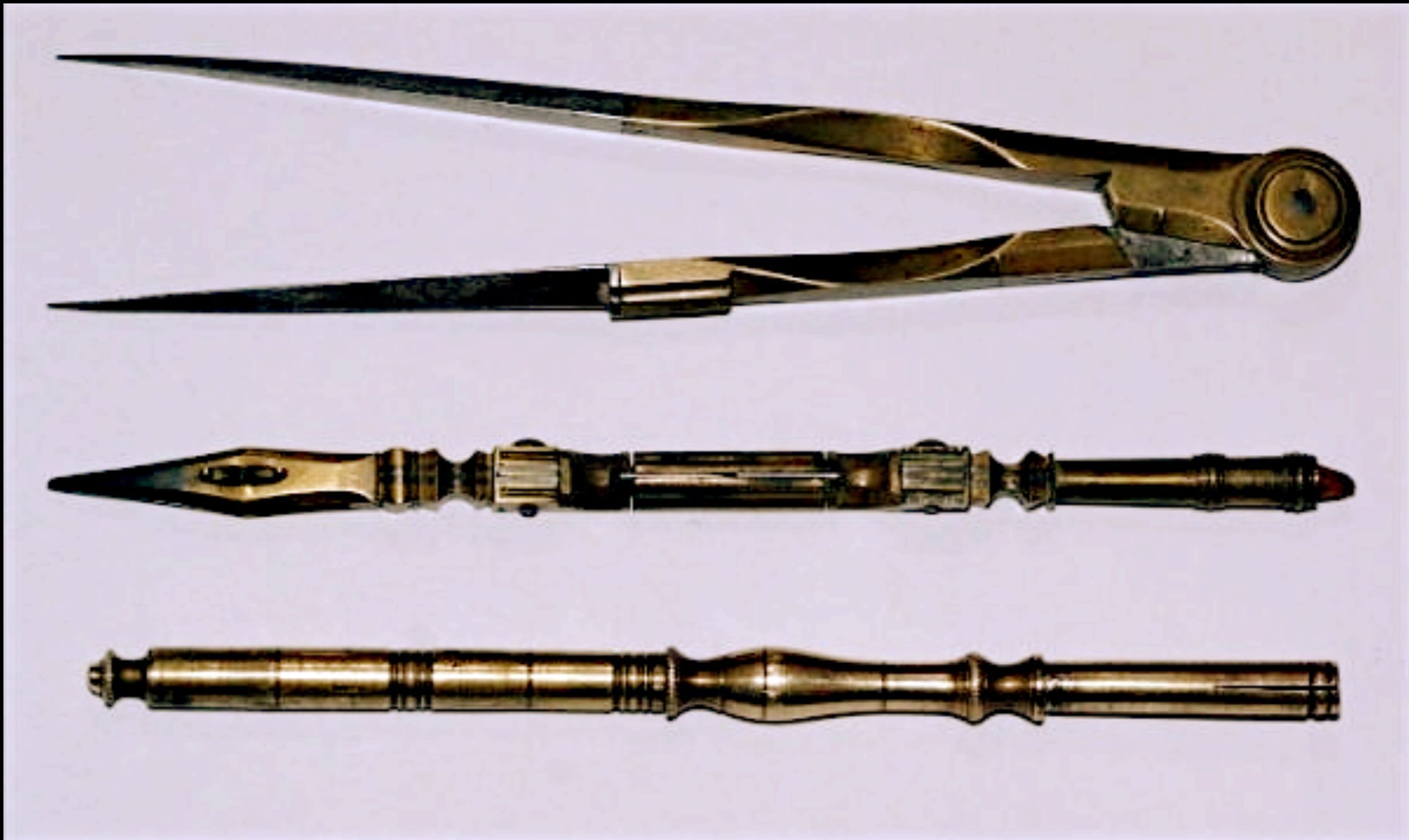
English Pocket Drafting Set  
18th Century  
(Fleaglass.com)



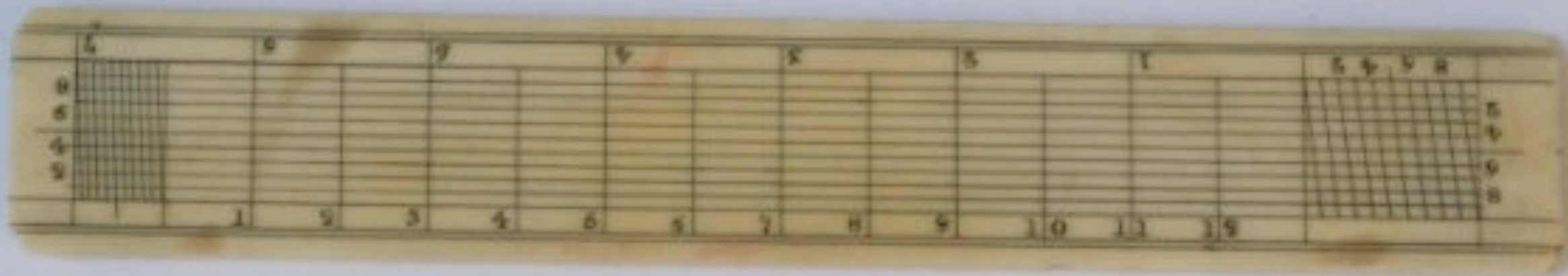
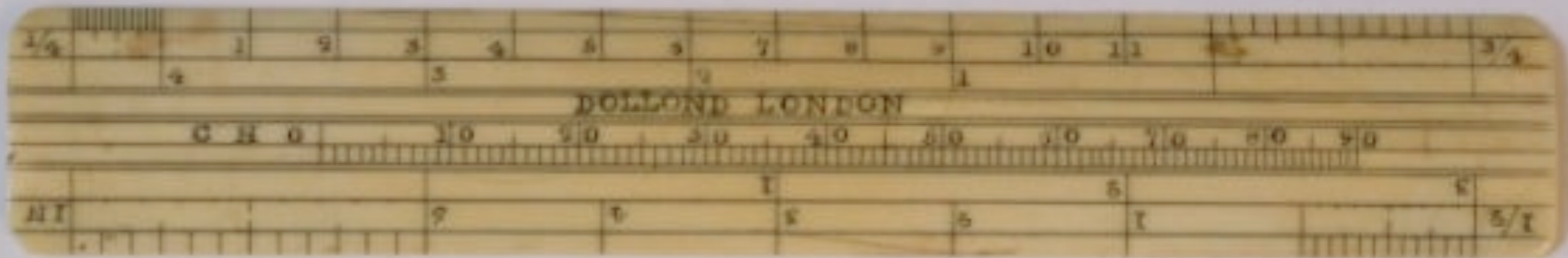
English Pocket Drafting Set  
18th Century  
(Fleaglass.com)



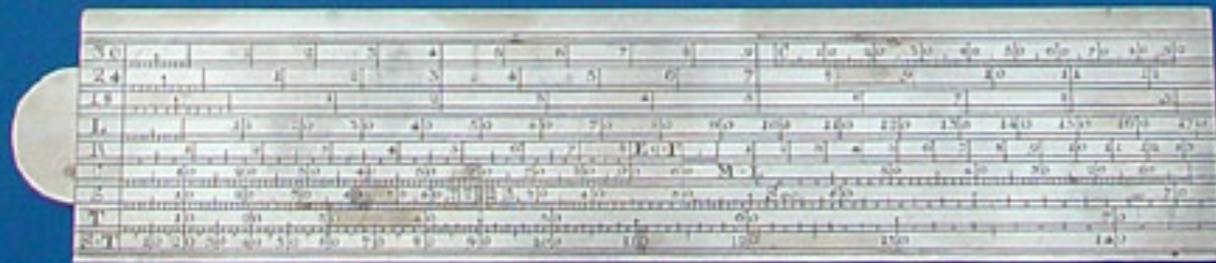
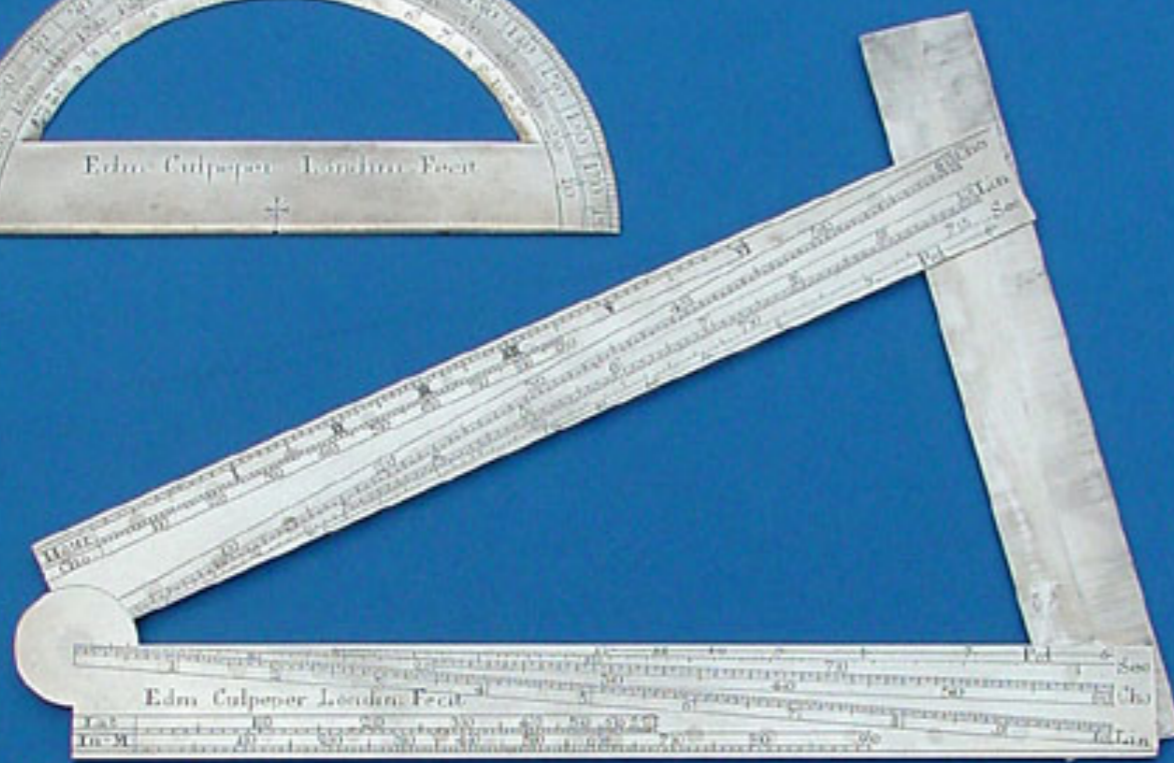
English Pocket Drafting Set  
18th Century  
(Fleaglass.com)



English Pocket Drafting Set  
18th Century  
(Fleaglass.com)

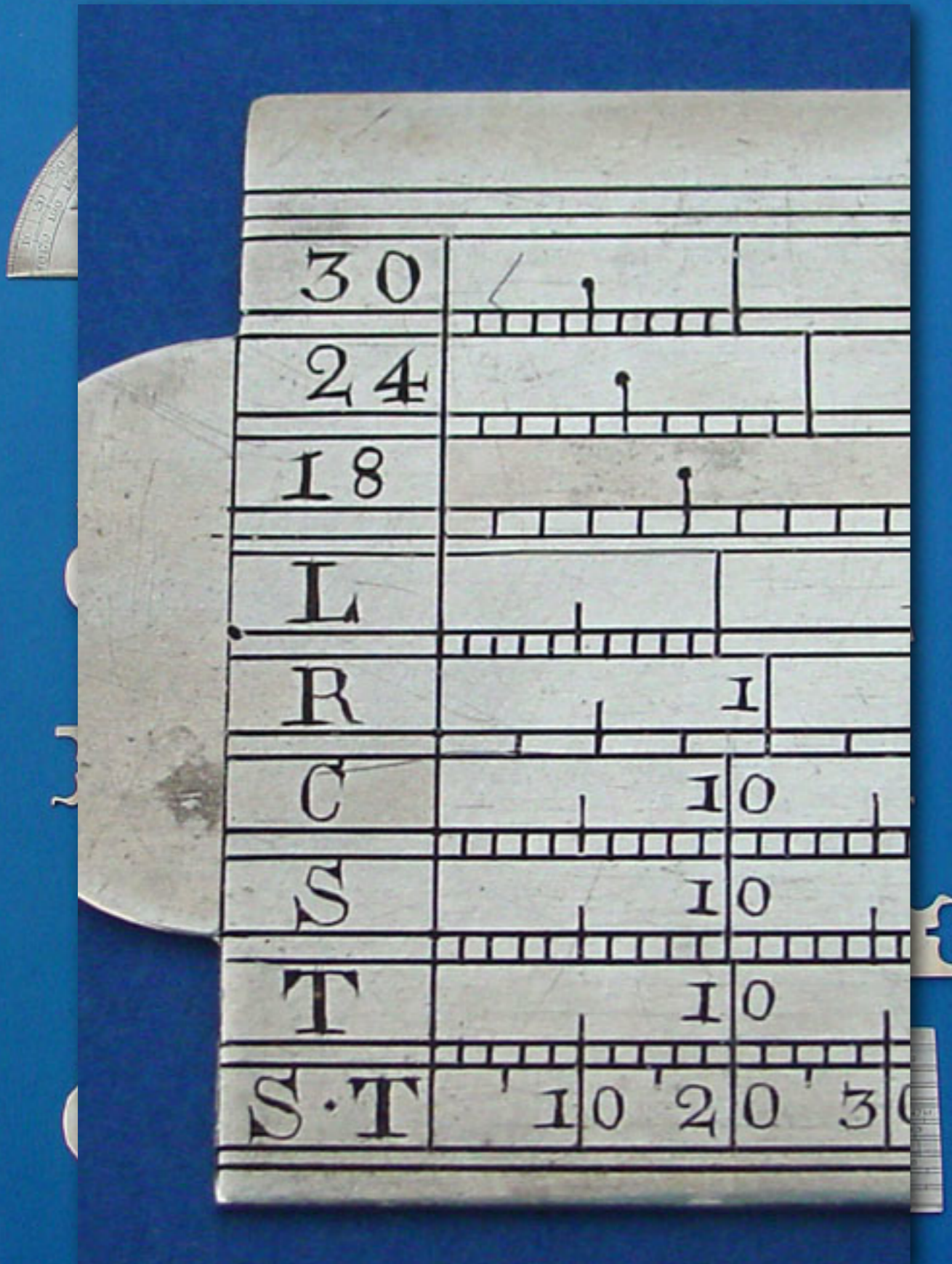


English Pocket Drafting Set  
18th Century  
(Fleaglass.com)



English Silver Drafting Instruments  
by Edmund Culpeper  
"Edm. Culpeper Londini Fecit"  
c. 1725 - 1750  
(Tesseract - Early Scientific Instruments)

*Edm. Culpeper Londini Fecit*



English Silver Drafting Instruments  
by Edmund Culpeper  
"Edm. Culpeper Londini Fecit"  
c. 1725 - 1750  
(Tesseract - Early Scientific Instruments)

*Edm. Culpeper Londini Fecit*



German Drafting Instrument Set

c. 1750

(Fleaglass.com)



German Drafting Instrument Set

c. 1750

(Fleaglass.com)



German Drafting Instrument Set

c. 1750

(Fleaglass.com)



German Drafting Instrument Set

c. 1750

(Fleaglass.com)

# Dividers



European Wrought Iron Dividers  
Late 17th - 18th Century  
(Tesseract - Early Scientific Instruments)



Proportional Dividers marked "AE"  
17th Century  
(Fleaglass.com)



German Proportional Dividers  
c. 1780  
(Fleaglass.com)



French Proportional Dividers  
DIEBOLT & FAHLMER a Strasbourg  
Late 18th Century  
(Fleaglass.com)

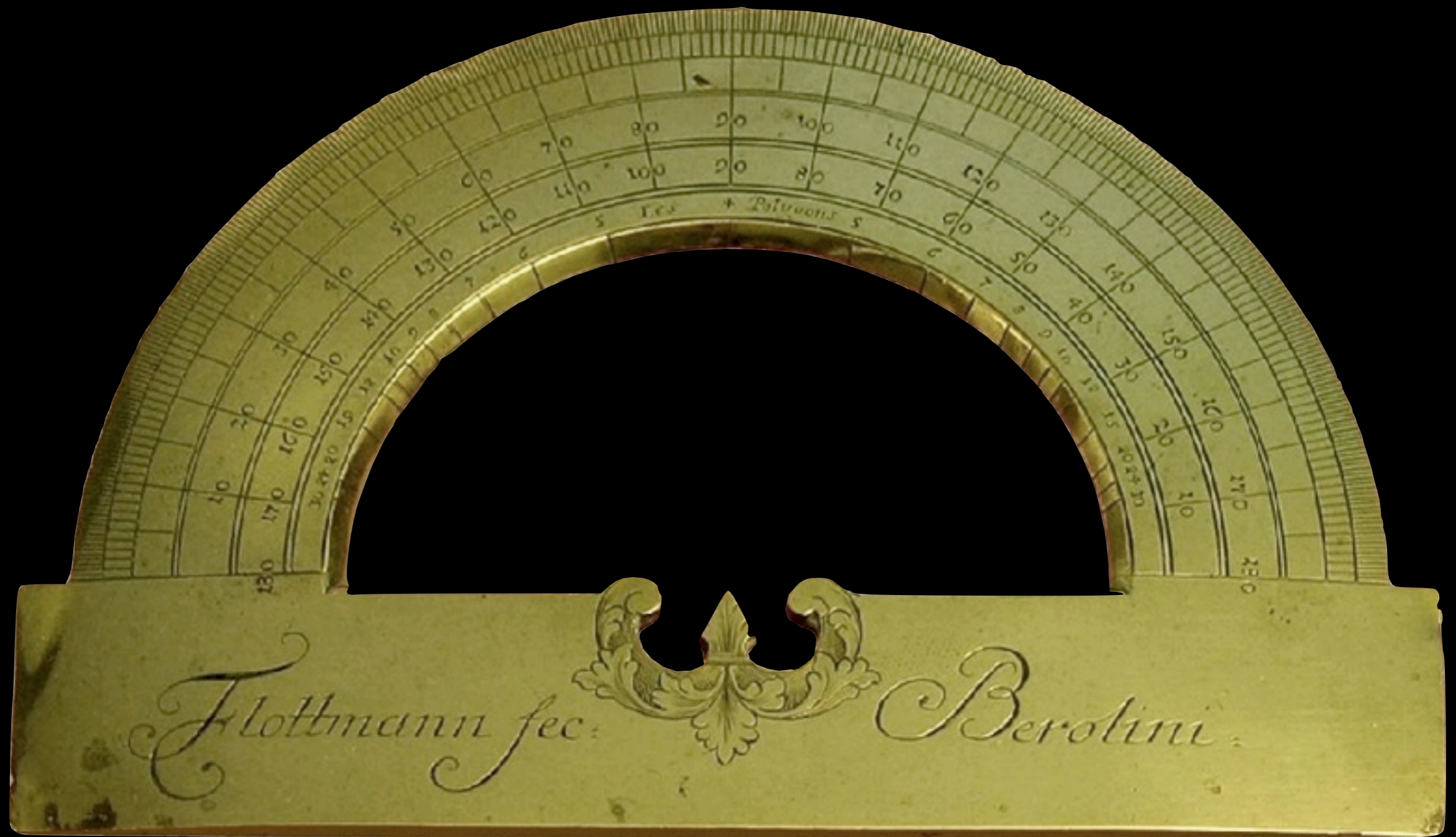


Surveyor's Divider  
18th Century  
(National Park Service)



Recreated Continental Engineers  
(Department of the Geographer to the Army 1777 - 1783)

# Protractors



Surveyor's Protractor  
18th Century



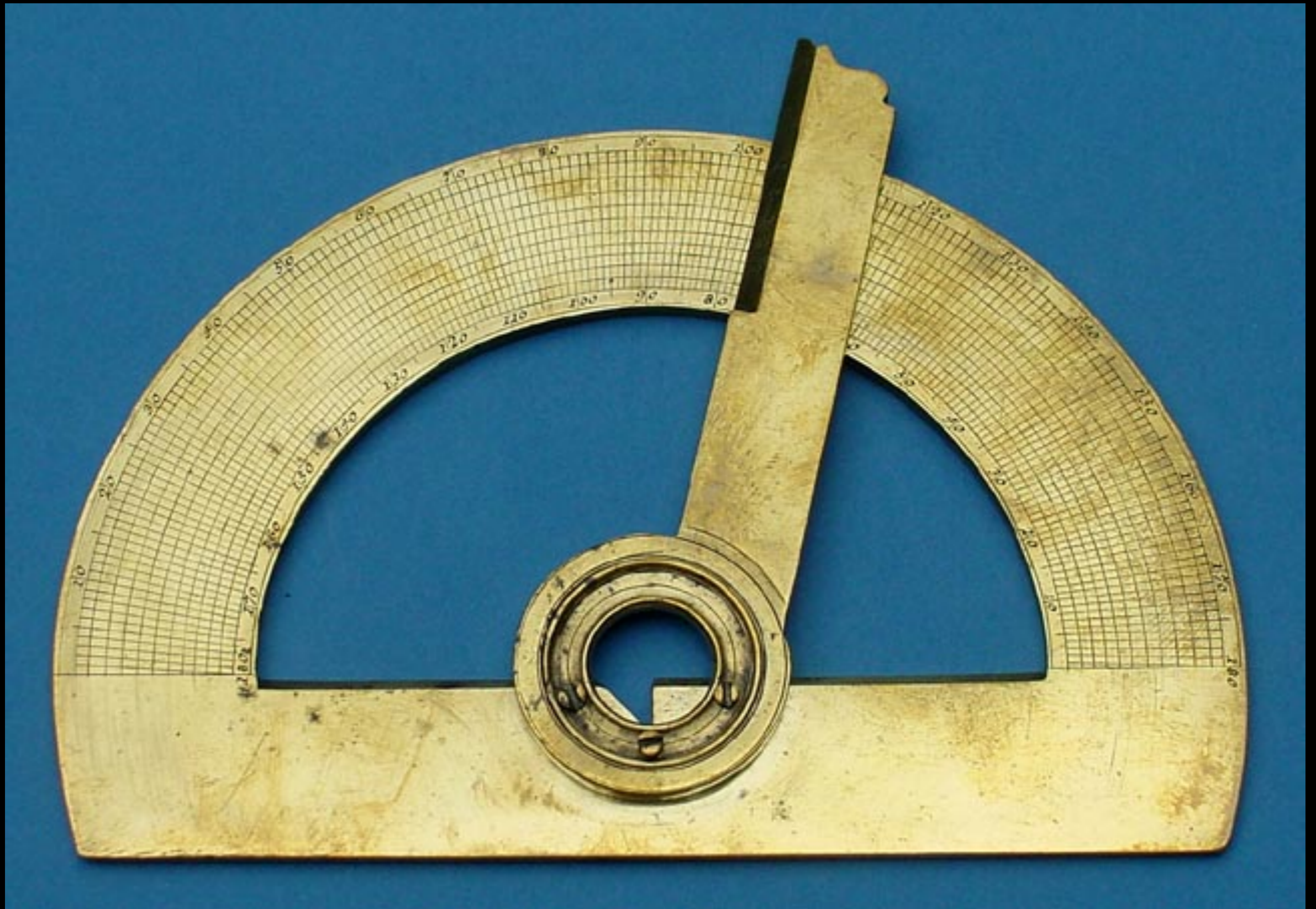
Brass Protactor signed "Fahlmer & Diebolt a Strasbourg"  
Mid 18th Century  
(Fleaglass.com)



Brass Protractor signed "Au Griffon, Quai de l'Horloge A Paris"  
Late 18th Century  
(Fleaglass.com)



Recreated Continental Engineers  
(Department of the Geographer to the Army 1777 - 1783)

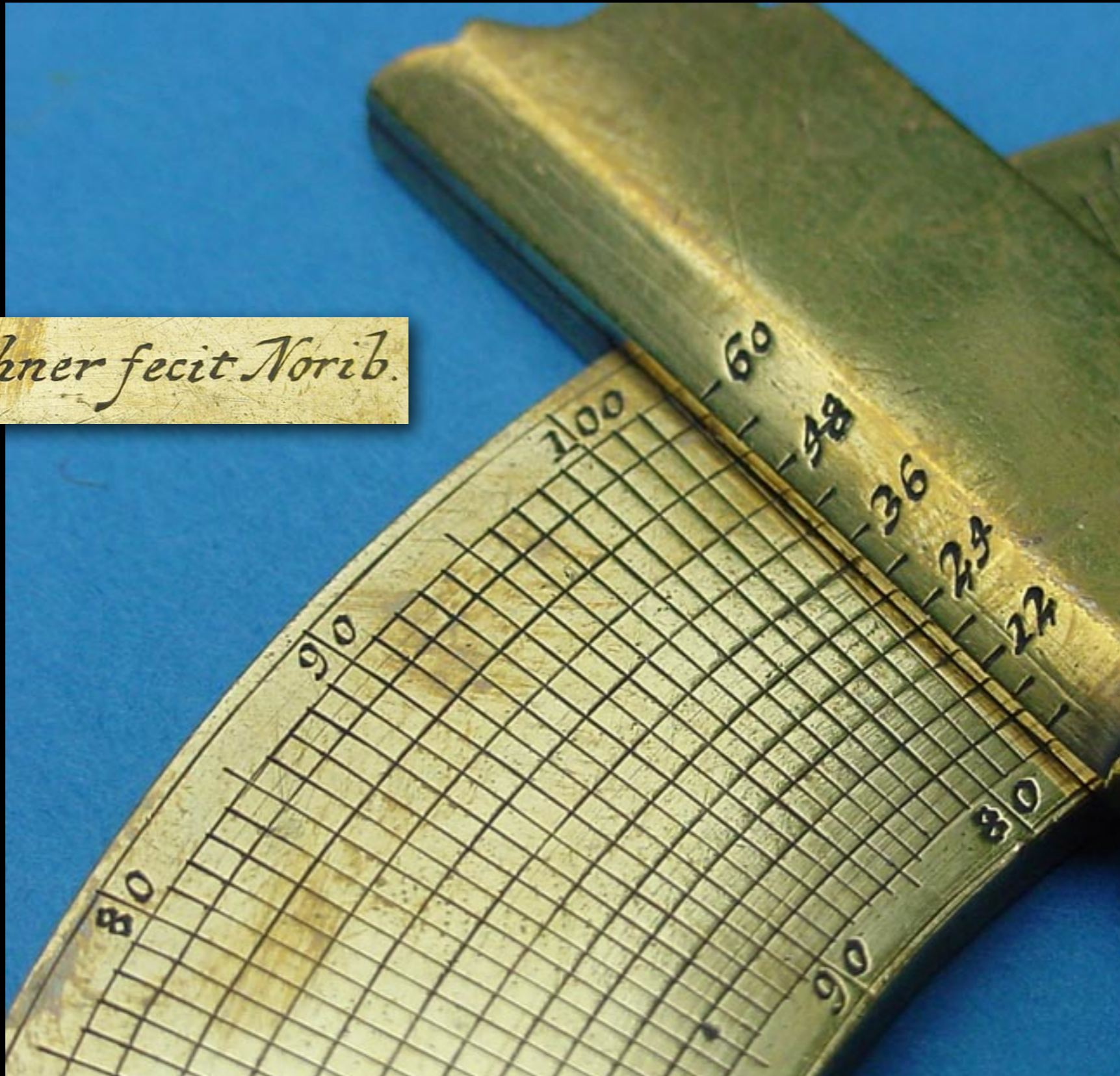


German Nuremberg Protractor with Transversal Interpolation

c. 1725 - 1750

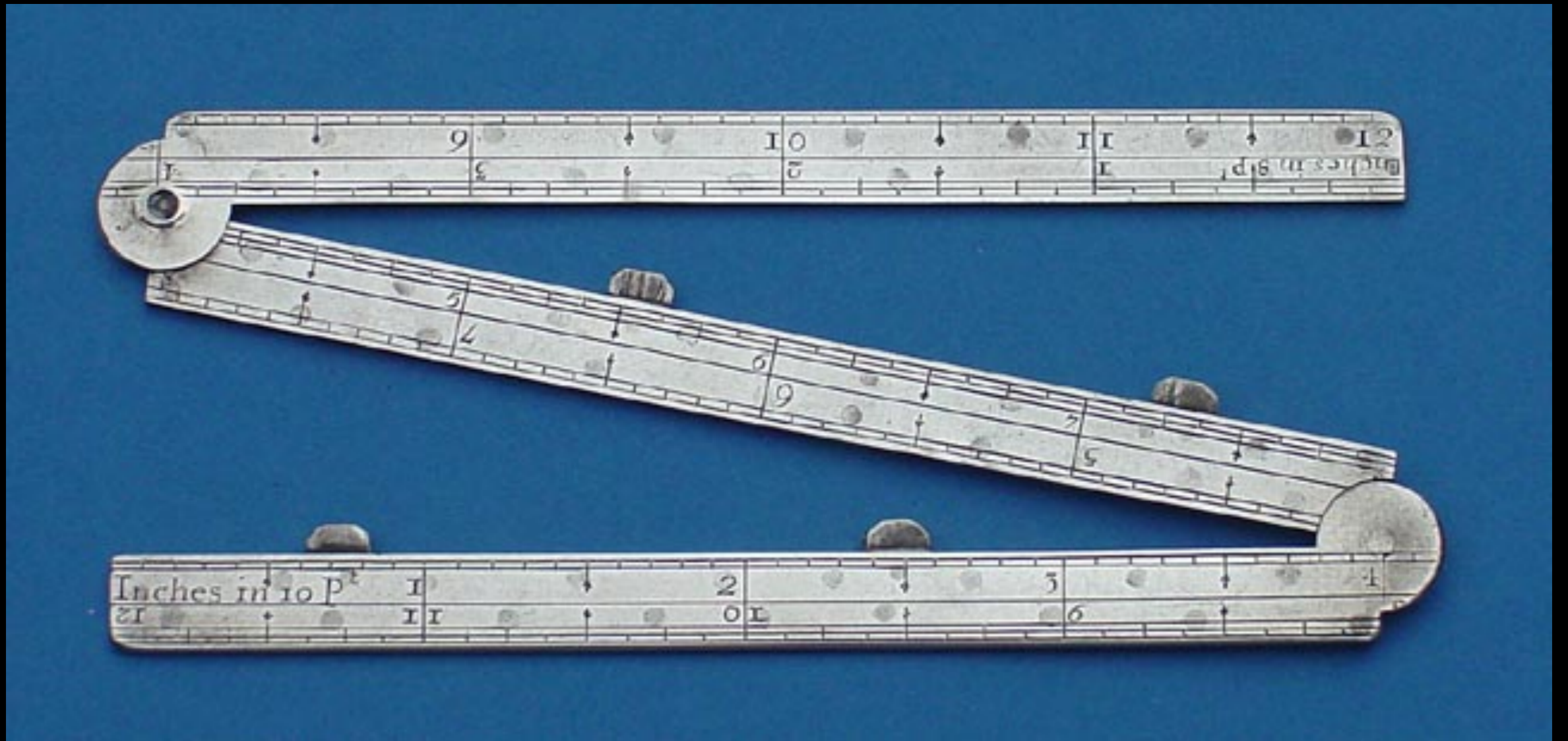
(Tesseract - Early Scientific Instruments)

*J.G. Püschner fecit Norib.*



German Nuremberg Protractor with Transversal Interpolation  
c. 1725 - 1750  
(Tesseract - Early Scientific Instruments)

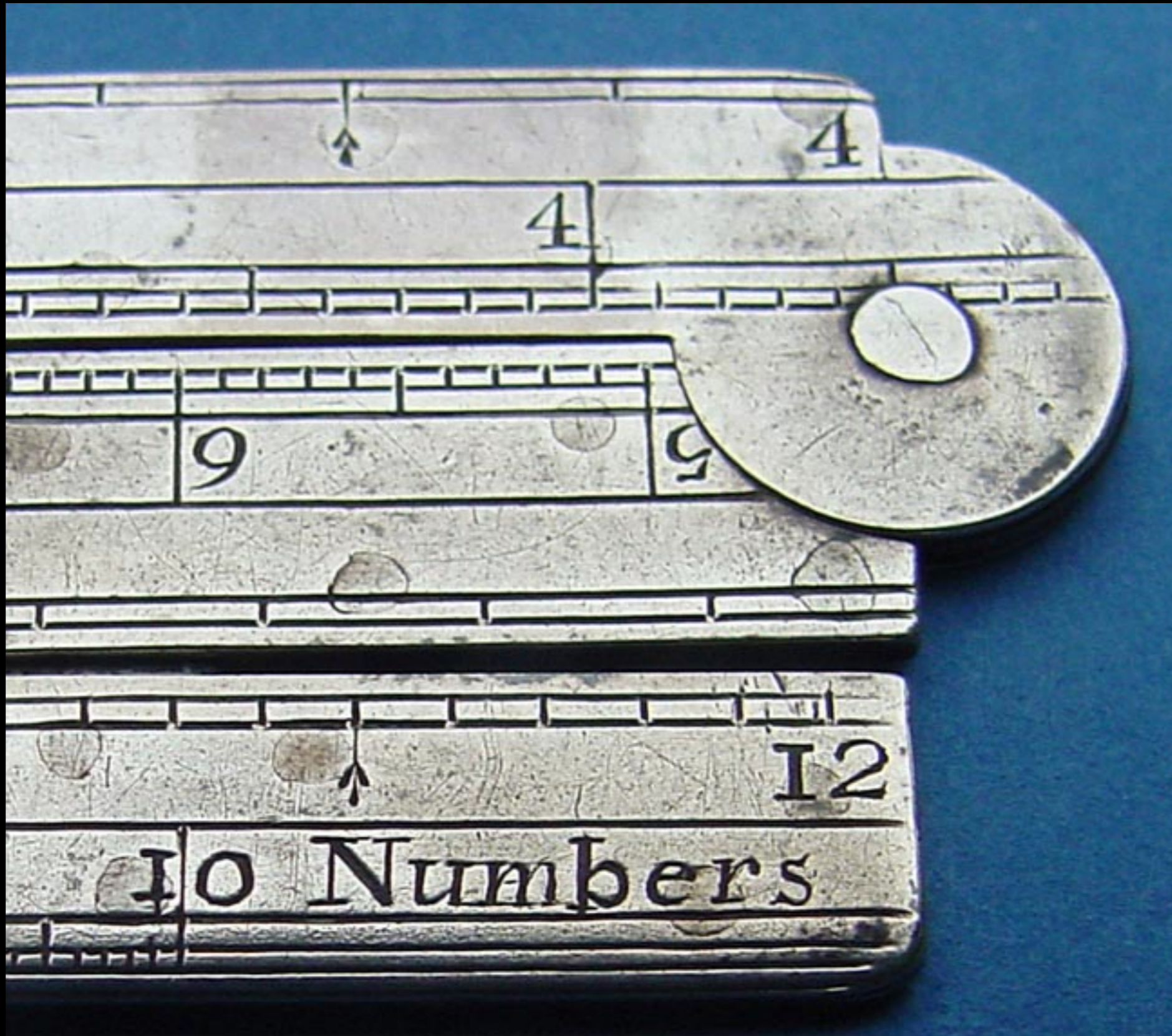
# Rules & Sectors



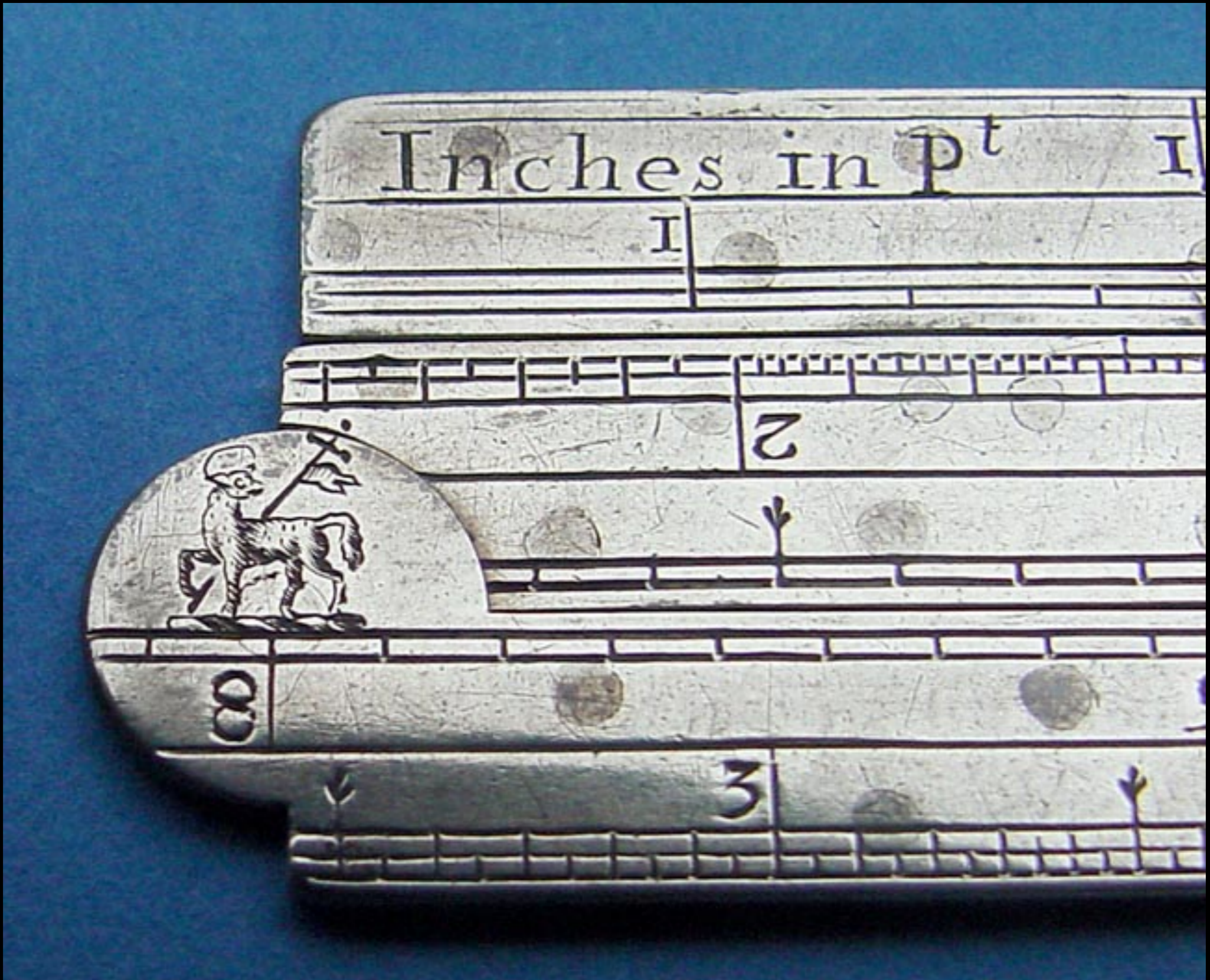
English Cleric's Three Fold Silver Linear Logarithmic Rule

c. 1700

(Tesseract - Early Scientific Instruments)



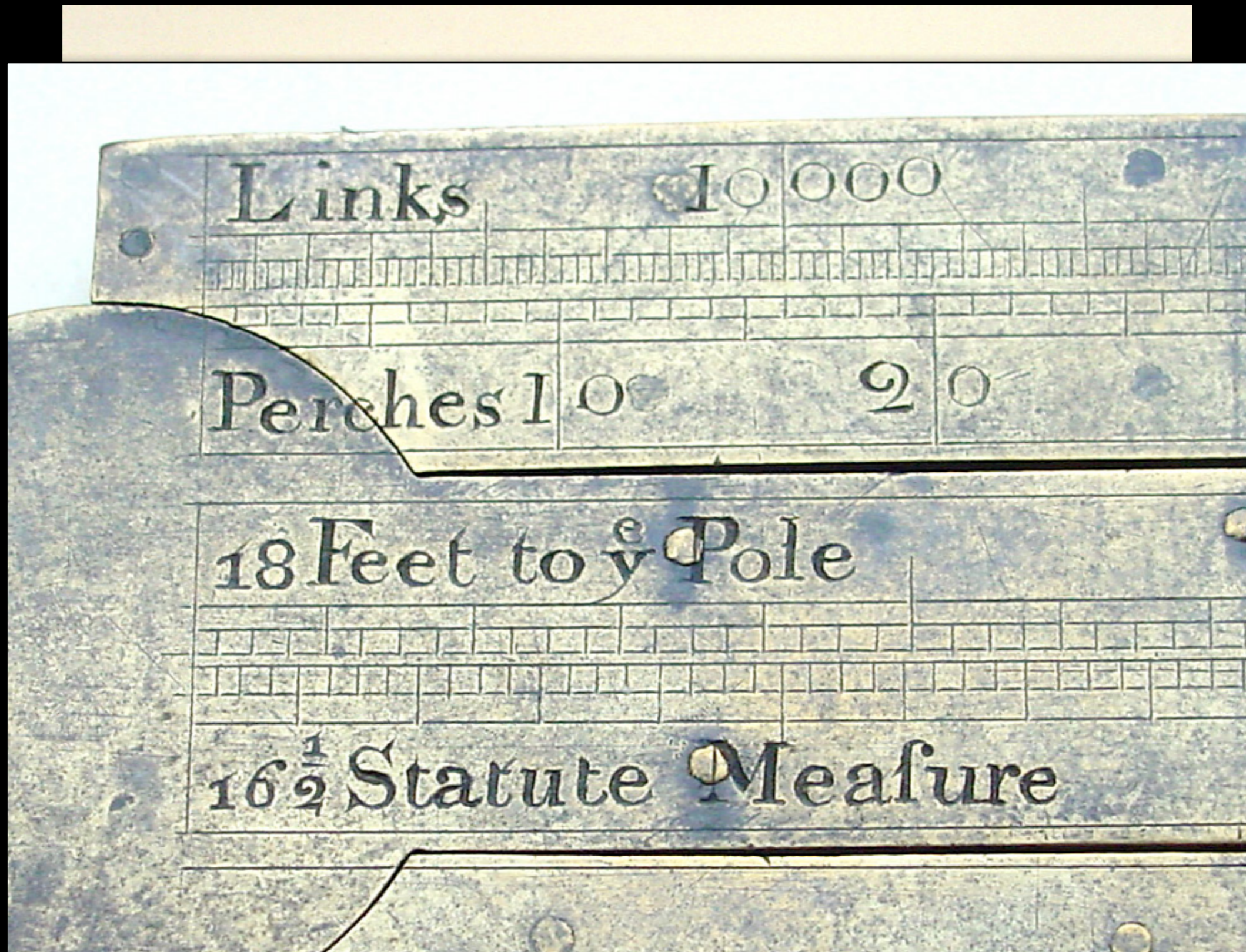
English Cleric's Three Fold Silver Linear Logarithmic Rule  
c. 1700  
(Tesseract - Early Scientific Instruments)



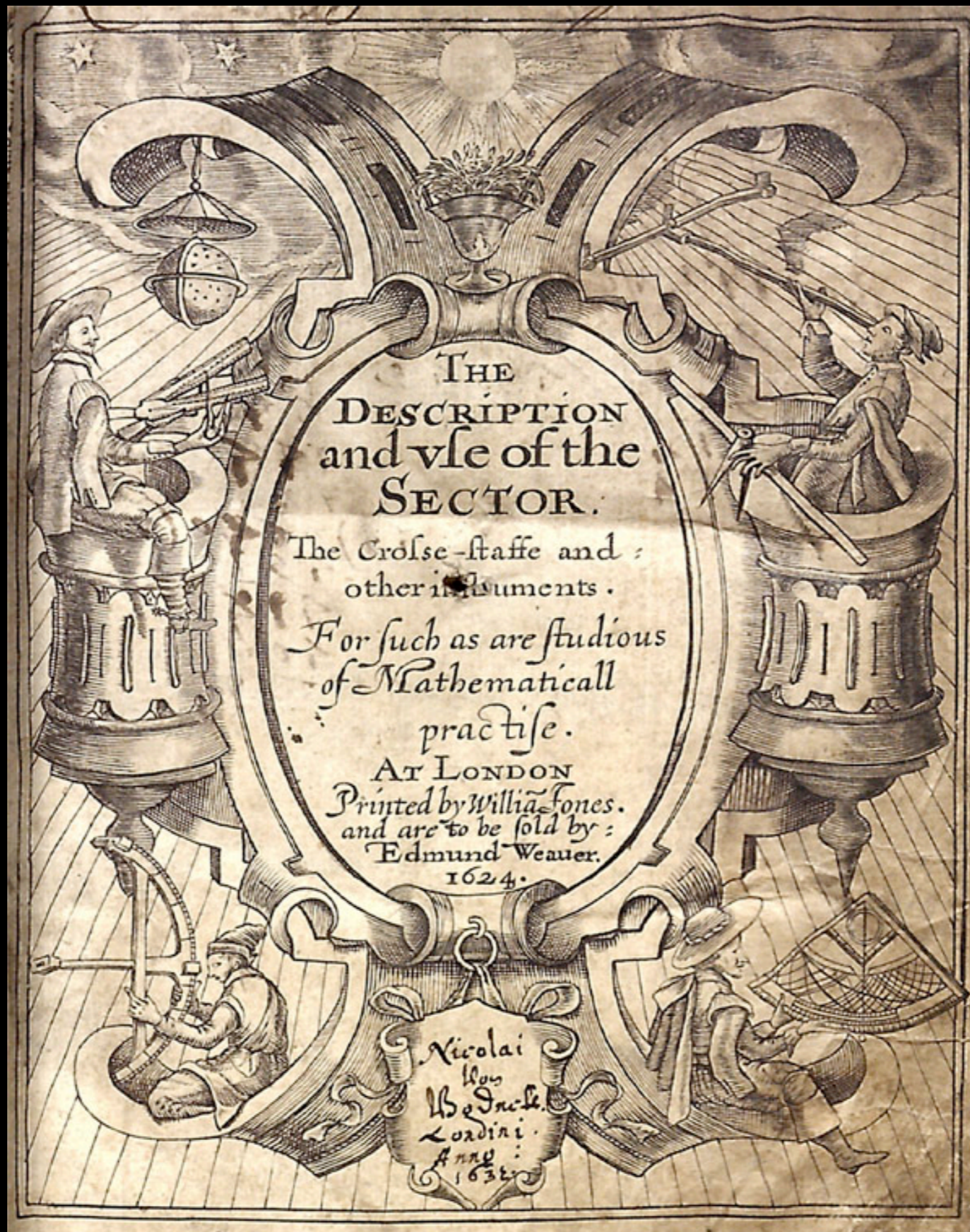
English Cleric's Three Fold Silver Linear Logarithmic Rule

c. 1700

(Tesseract - Early Scientific Instruments)



English Surveyor's Boxwood Three Arm Conversion Rule  
First Half 18th Century  
(Tesseract - Early Scientific Instruments)



“The DESCRIPTION and use of the SECTOR”

London 1624

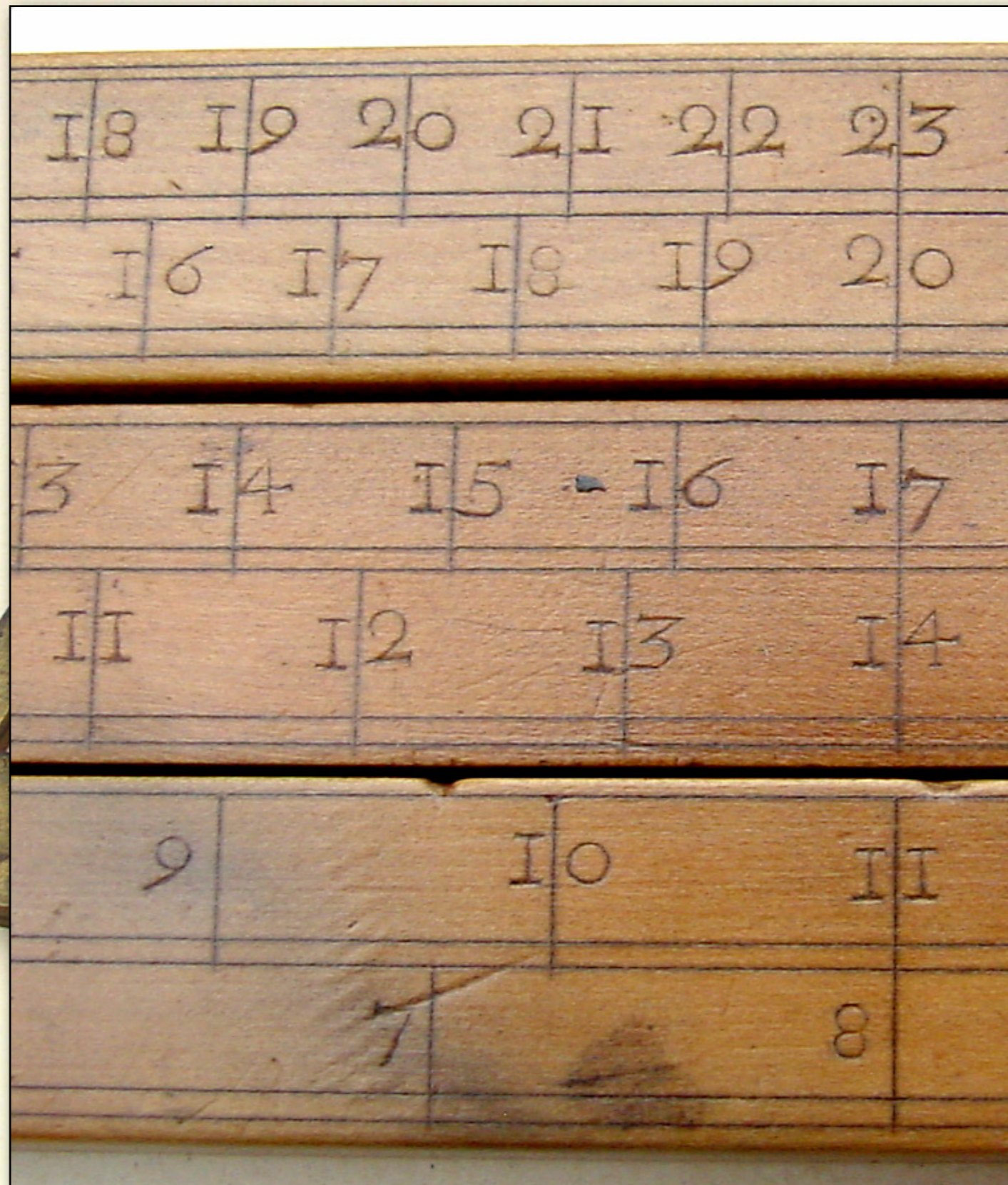
(Smithsonian)



French Brass Sector Rule  
Signed Butterfield, Paris c. 1680-1724



English Surveyor's Boxwood Three Arm Conversion Rule  
First Half 18th Century  
(Tesseract - Early Scientific Instruments)

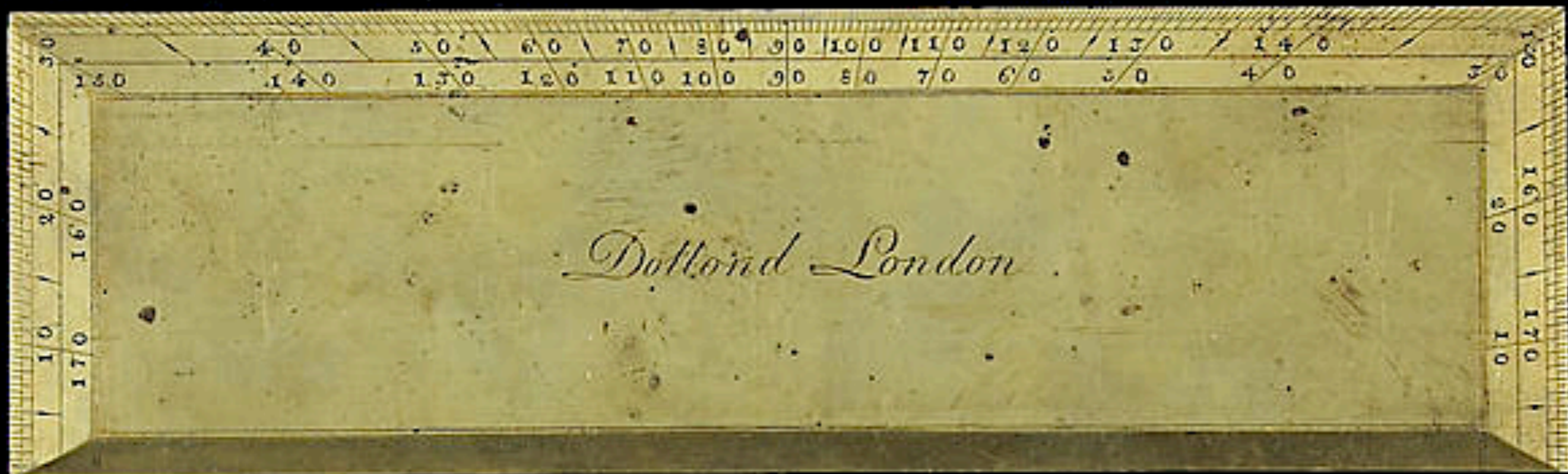


English Surveyor's Boxwood Three Arm Conversion Rule  
First Half 18th Century  
(Tesseract - Early Scientific Instruments)

*Thomas Harman 1758*



Brass Scale Rule by Thomas Harman  
Dated 1758  
(Bonhams - William H. Guthman Collection)



Brass Rule by Dollond of London  
c. 18th - Early 19th Century  
(Bonhams - William H. Guthman Collection)



Silver Surveyor's Scale  
by William Collier of London 1720



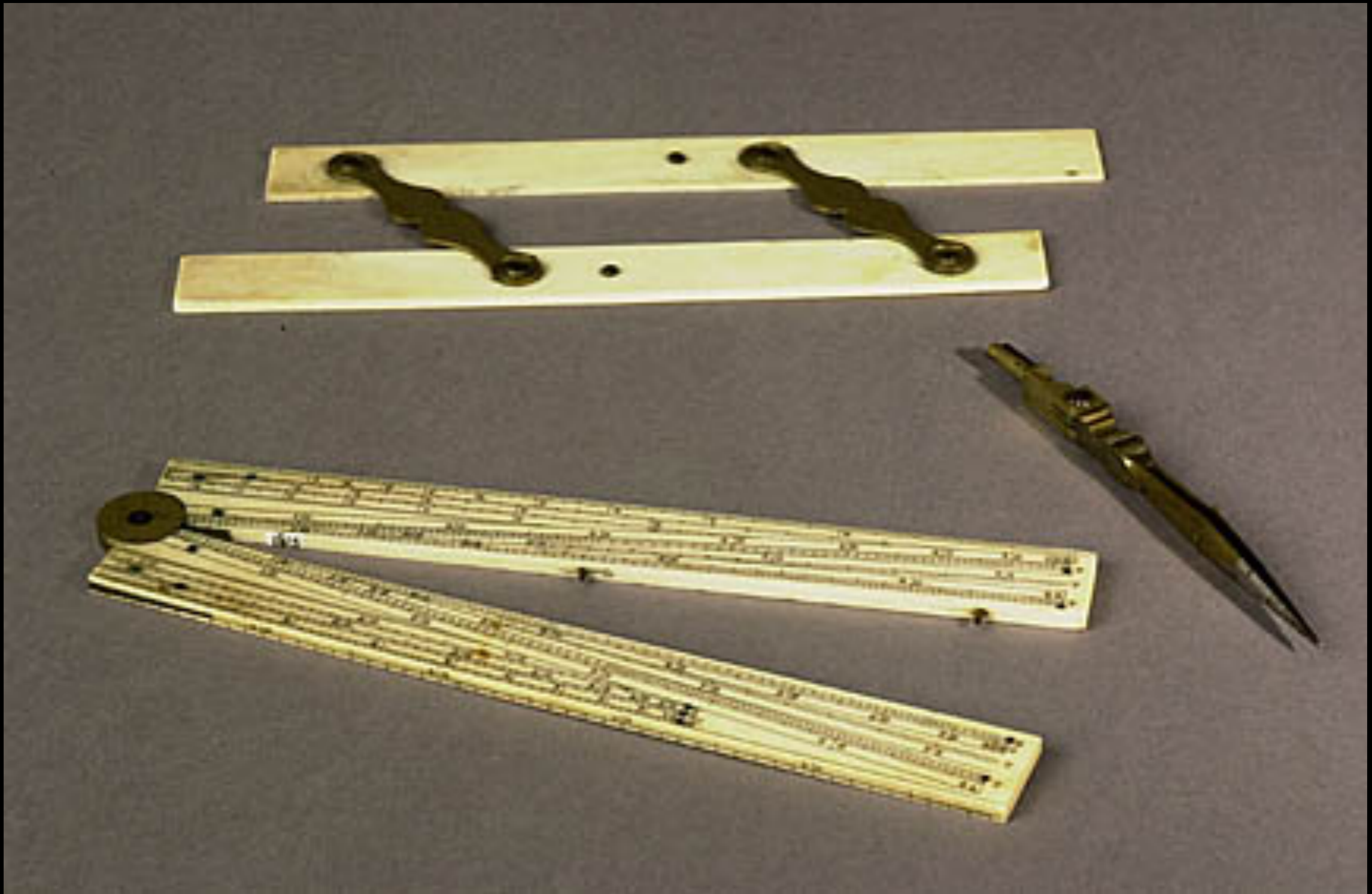
Demy Pied de Roy signed "Butterfield a Paris"  
Late 17th Century  
(Fleaglass.com)



French Sector signed "Meurand a Paris"  
18th Century  
(Fleaglass.com)

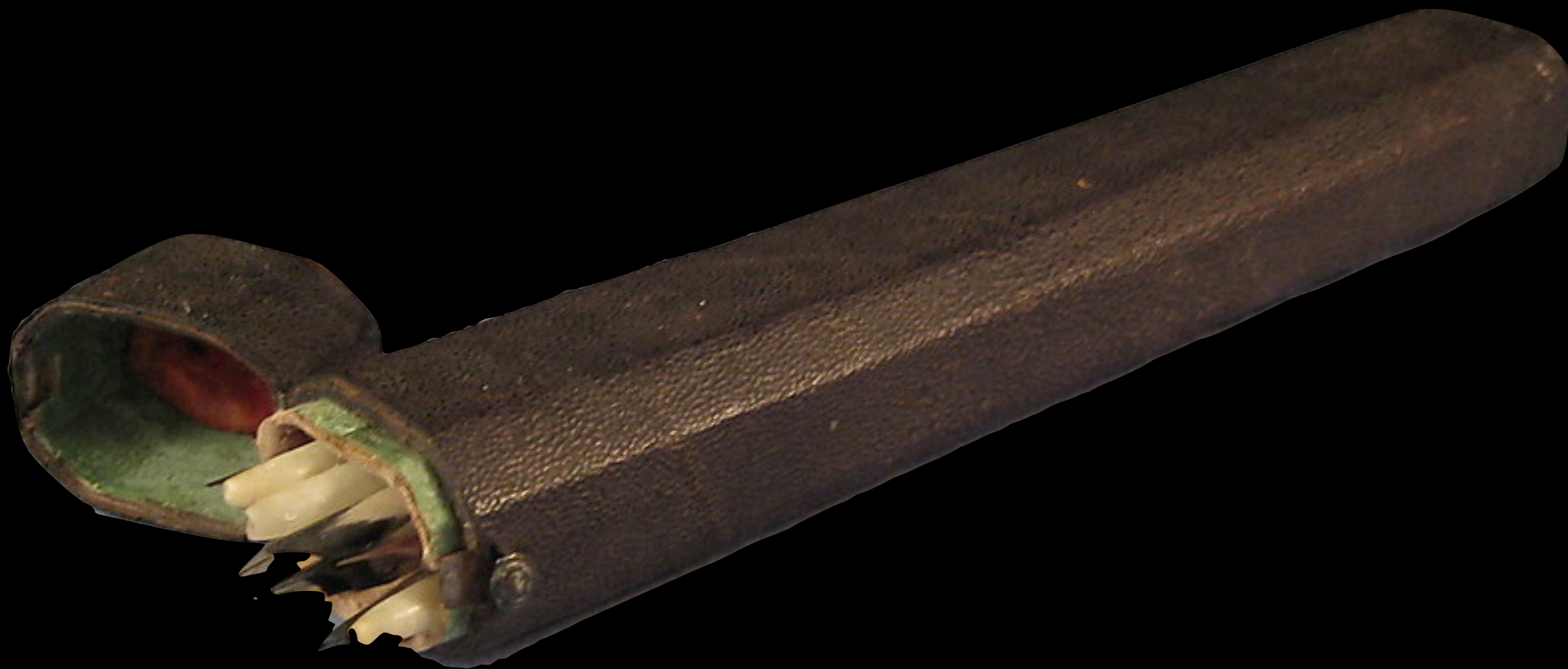


Recreated Continental Engineers  
(Department of the Geographer to the Army 1777 - 1783)



Surveyor's Instruments of Parallel Rules, Ruling Pen, and Sector  
18th Century  
(National Park Service)

# Pens, Ink & Pencils



Shagreen Case of Quill Pens  
Late 18th Century  
(Private Collection)



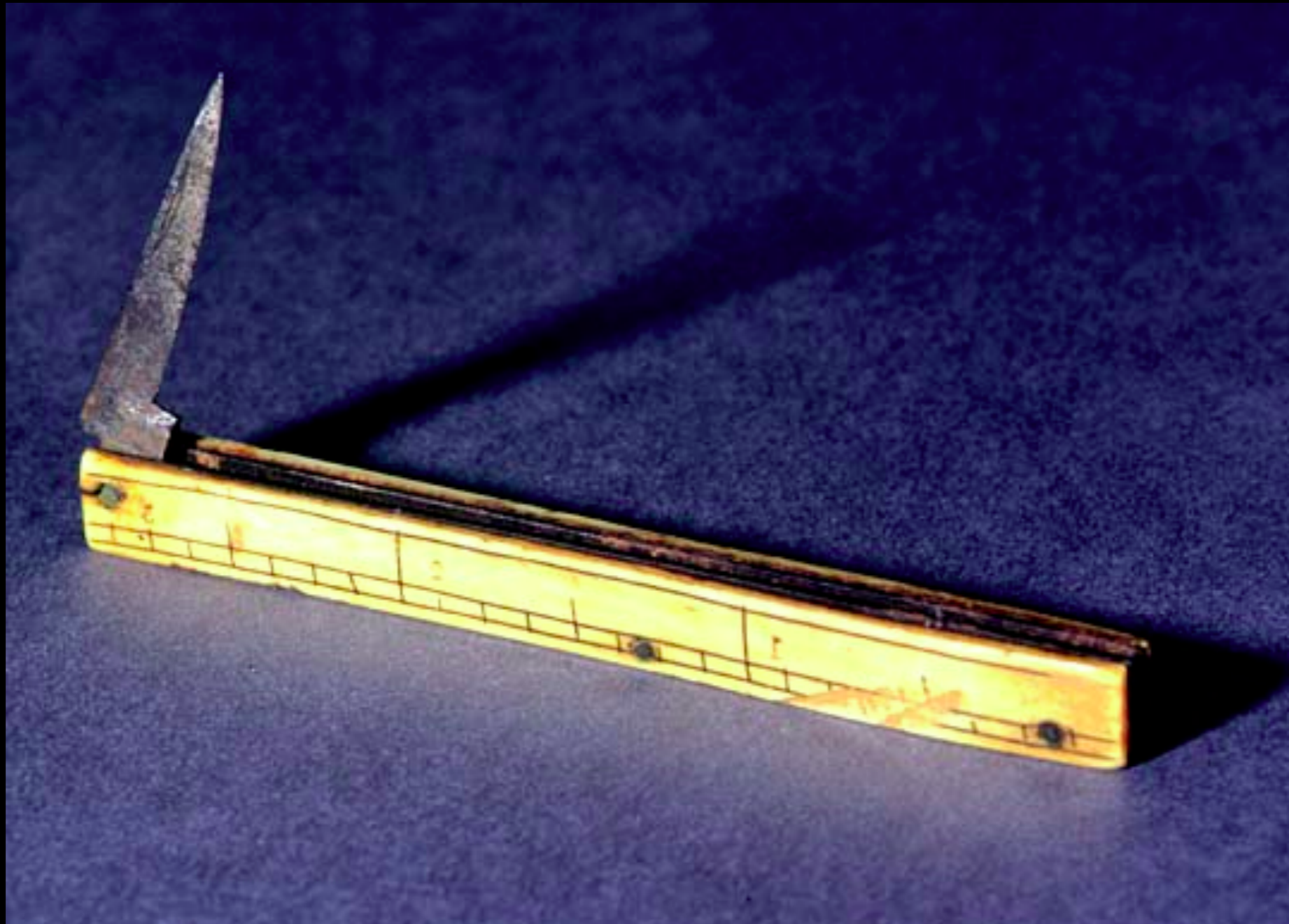
Shagreen Case of Quill Pens  
Late 18th Century  
(Private Collection)



Shagreen Case of Quill Pens  
Late 18th Century  
(Private Collection)



Shagreen Case of Quill Pens  
Late 18th Century  
(Private Collection)



Pen Knife with Ruler  
18th Century  
(Guilford Courthouse National Military Park)



Steel & Tortoise Shell Pen Knife  
18th Century  
(Guilford Courthouse National Military Park)



British Officer's Traveling Writing Box  
18th Century  
(Bonhams - William H. Guthman Collection)



Traveling Writing Box  
18th Century  
(Bonhams - William H. Guthman Collection)



English Fruitwood Pounce Pot  
c. 1720  
(Christie's Auction House)



English Lignum Vitae Pounce Pot  
c. 1750  
(Christie's Auction House)

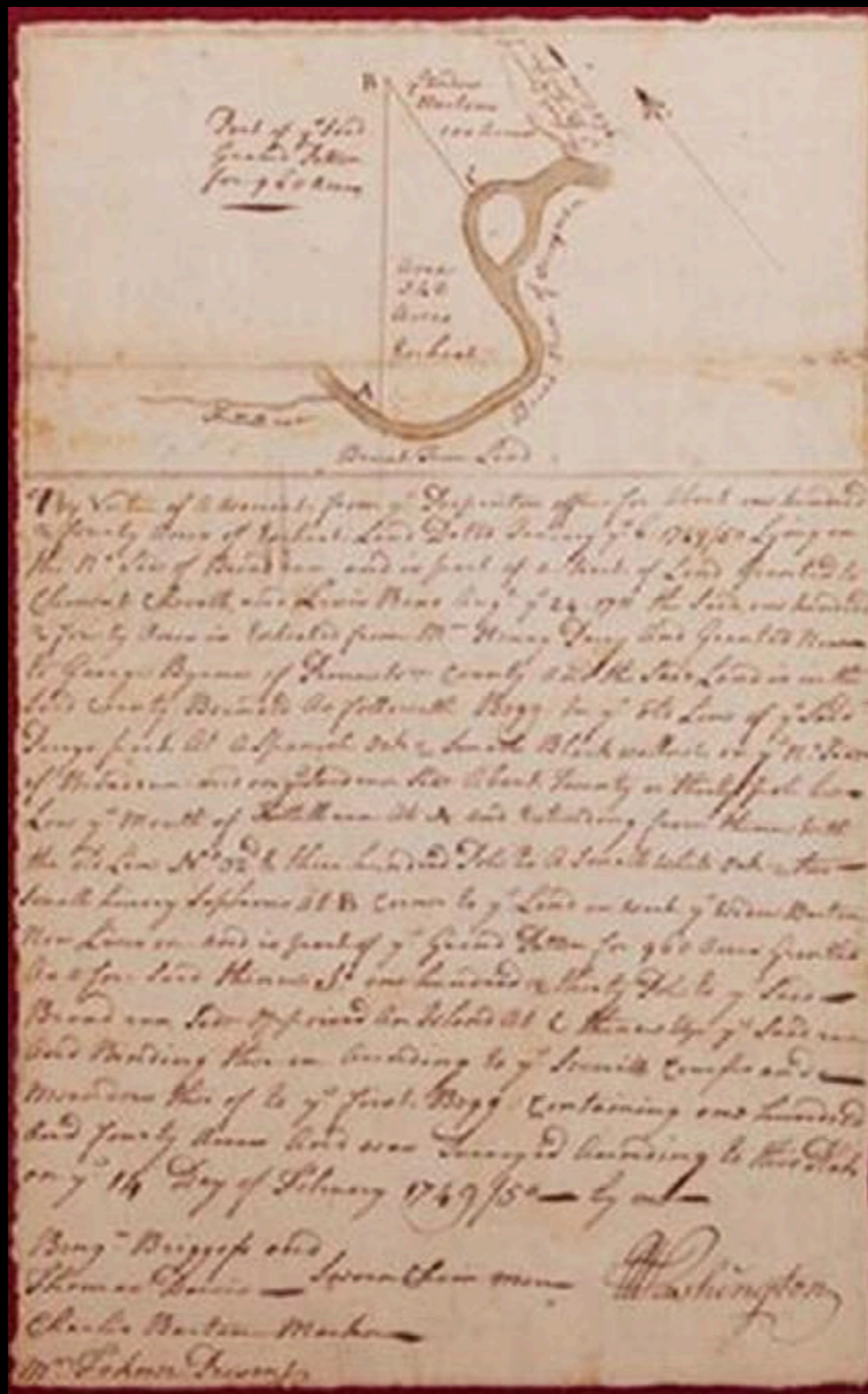


English Pencil Holder  
Late 18th Century  
(Fleaglass.com)

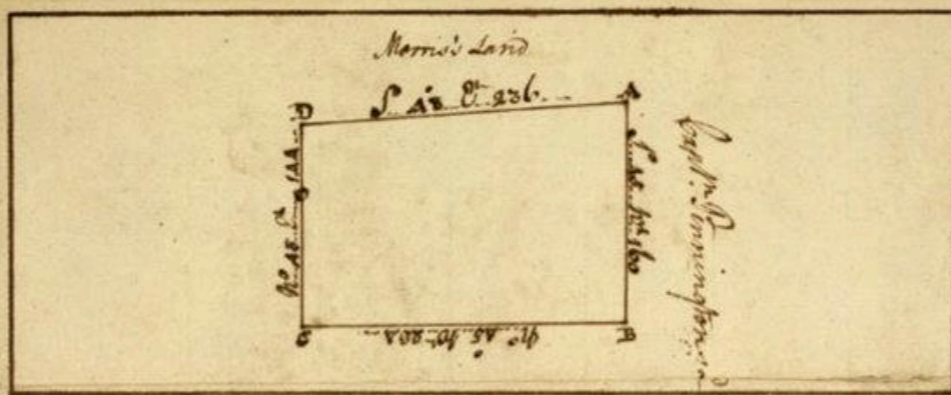


French Pencil Holder & Drawing Instrument  
Late 18th Century  
(Fleaglass.com)

Surveys  
&  
Cartography



1749 Hand Drawn and Colored Plate by 17 Year Old George Washington  
140 Acres of Land in Virginia



Pursuant to a warrant from the Proprietors Office to Me directed I have Surveyd for Mr. John Lindsey a certain tract of waste and ungranted Land in Frederick County bounded as follows to wit

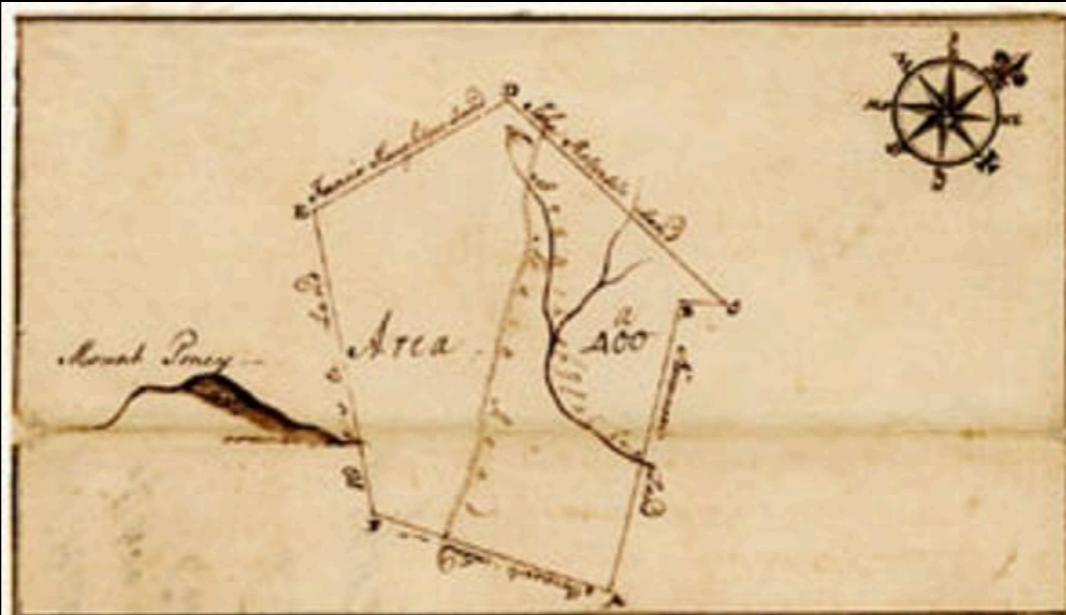
Beginning at a Walnut and Red Oak Morris's Patent corner and in the line of a late survey made for Isaac Pennington and extended along the said Pennington's line S. 48. E. 144 paces to a white Oak and double white hick near a limestone Rock thence N. 48. W. 224 paces to a Red Oak and locust sapling in the corner thence N. 48. E. 92 paces to Capt. Pennington's corner and thence to Wood Oak Morris's E. thence with his line S. 48. E. 236 paces to the top of Long Two hundred and Twenty three Acres - Nos. 17<sup>th</sup> & 1750

Henry Hendrick  
Stephen Sebastian } 1750  
John Lindsey - Master

by George Washington

George Washington Plat of a Survey for John Lindsey  
223 Acres of Land in Frederick Co., Virginia 1750





Pursuant to a Warrant from the Proprietors Office granted to Mr. Richard  
 Dawson I have surveyed as followeth

Beginning at three white Oaks in Norman's Line and coming  
 to the said Norman's north of the said land and extending thence N 32 E 90 rods  
 to a Branch of Hill Run and five hundred and eighty rods to a large white Oak corner  
 to the said Norman thence along another of his Lines N 30 E thirty four rods to three  
 white Oaks and a Hickory corner to the said Norman and John Harkness thence along Robert's  
 Line S 70 E one hundred and eighty three rods to the Road and five hundred and thirty rods  
 to two white Oaks in a Road corner to the said Robert and Mr. Francis Naughton thence with  
 the said Naughton's Line S 70 E one hundred and thirty four rods to three white Oaks in  
 the said Naughton's Line thence leaving his line and running S 65 W 80 rods and  
 thirty six rods to three white Oaks amongst a parcel of white Oaks & Barren corner thence  
 with his Line N 30 E one hundred and eighty six rods to the Beginning containing  
 four thousand acres

William Naughton  
 Francis Naughton  
 Robert Naughton

George Washington  
 Surveyor  
 July 22 1759

1749 Survey by George Washington



Recreated Continental Engineers  
(Department of the Geographer to the Army 1777 - 1783)



Recreated Continental Engineers  
(Department of the Geographer to the Army 1777 - 1783)



Mahogany Watercolor Paint Box by Thomas Reeves & Sons, London,  
c. 1790  
(Mount Vernon)

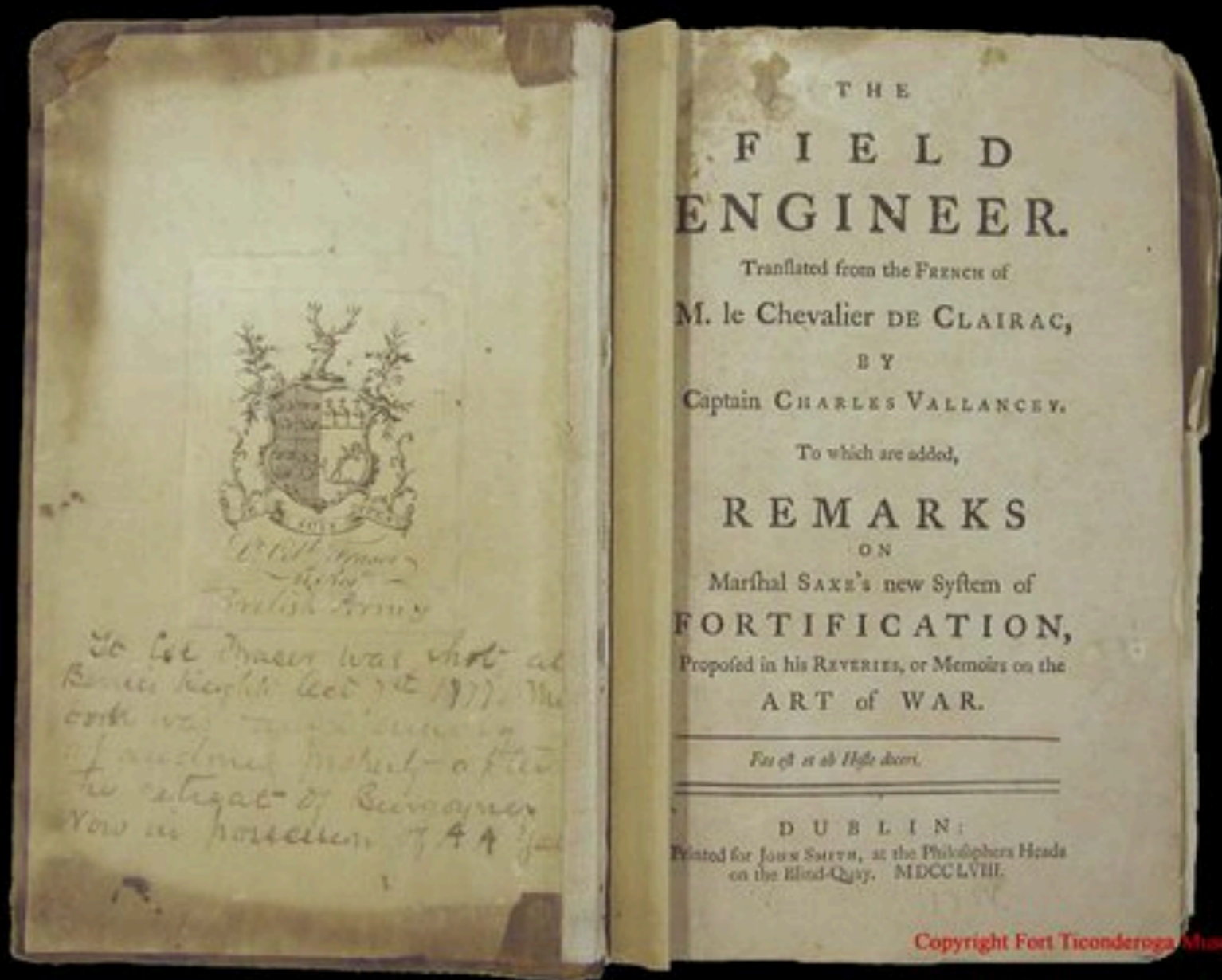
# A Plan of Alexandria now Belhaven



- 1
- 2
- 3
- 4
- 5
- 6
- 7
- 8
- 9
- 10
- 11
- 12
- 13
- 14
- 15
- 16
- 17
- 18
- 19
- 20
- 21
- 22
- 23
- 24
- 25
- 26
- 27
- 28
- 29
- 30
- 31
- 32
- 33
- 34
- 35
- 36
- 37
- 38
- 39
- 40
- 41
- 42
- 43
- 44
- 45
- 46
- 47
- 48
- 49
- 50
- 51
- 52
- 53
- 54
- 55
- 56
- 57
- 58
- 59
- 60
- 61
- 62
- 63
- 64
- 65
- 66
- 67
- 68
- 69
- 70
- 71
- 72
- 73
- 74
- 75
- 76
- 77
- 78
- 79
- 80
- 81
- 82
- 83
- 84

Potomack River

# Books



**“THE FIELD ENGINEER”**  
by M. le Chevalier de Clairac, Dublin 1758  
Owned by Brigadier General Simon Frasier who was Killed at the Battle of Bemis Heights, October 7, 1777  
(A.A. Yale)



Recreated Continental Engineers  
(Department of the Geographer to the Army 1777 - 1783)

# Acknowledgements

The 18th Century Material Resource Center greatly acknowledges our friends in the Recreated Department of the Geographer (1777 - 1783) for their many contributions to this edition. For more information on 18th Century Engineering, Drafting and Surveying, please contact these extremely knowledgeable historians at: [www.armygeographer.org](http://www.armygeographer.org)



# Acknowledgements

The material contained within these slideshows is presented for educational purposes only. The 18th Century Material Culture Resource Center does not personally own any of the items depicted herein and is indebted to the countless museums, libraries, and private collectors who willingly share their collections with the public through the internet. Every attempt has been made to credit these organizations and individuals for their contributions as best as possible.

If there is a question you have regarding a particular item featured within a presentation, please contact the 18th Century Material Culture Resource Center and we will try to answer your inquiry as best as possible. If for any reason you feel there is any item that should not be presented here, or if there is an error in any listing, or if you know the source for any item whose credit is unknown, please inform us and we will make sure your concern is addressed as soon as possible.

Thank you!

- The 18th Century Material Culture Resource Center