

18th Century Material Culture

Female Dress - Paul Sandby Studies I



Women of England



14321

A Female Figure in a Park
by Paul Sandby c. 1760
(The Royal Collection)



14325

A Girl from Norwich
by Paul Sandby
(The Royal Collection)



14326

A Girl from Norwich
by Paul Sandby
(The Royal Collection)



14327

A Girl from Norwich
by Paul Sandby
(The Royal Collection)



The wife of Dr Franklin

“The wife of Dr. Franklin”
Paul Sandby
(The Royal Collection)



The wife of Mr Whitbread's gardener at Woolmer, Herts. 1784

14338

“The wife of Mr. Whitbread's gardener at Woolmer, Herts”
Paul Sandby 1784
(The Royal Collection)



Martha Collins, Thomas Sandby's cook

14339

“Martha Collins, Thomas Sandby's Cook”
Paul Sandby
(The Royal Collection)



“The celebrated Kitty Fisher”
Paul Sandby c. 1758 - 1760
(The Royal Collection)



“The celebrated Kitty Fisher”
Paul Sandby c. 1758 - 1760
(The Royal Collection)



A Young Lady Writing
Paul Sandby
(The Royal Collection)



14378

Two Ladies Seated Under a Tree
by Paul Sandby
(The Royal Collection)



IDLENESS

14379

IDLENESS
by Paul Sandby
(The Royal Collection)



14381

A Lady Writing a Letter
by Paul Sandby
(The Royal Collection)



14382

Lady Elizabeth Harcourt
by Paul Sandby
(The Royal Collection)



14383

Mrs. Lane
by Paul Sandby
(The Royal Collection)



Mrs Mercier and her youngest son Henry

14384

“Mrs. Mercier and her youngest son Henry”
by Paul Sandby c. 1760
(The Royal Collection)



Mrs. Mercier and her son.

14385

Mrs. Mercier and Her Son
by Paul Sandby
(The Royal Collection)



14386

A Standing Female Figure
by Paul Sandby
(The Royal Collection)



Lady L. Clayton

14387

Lady L. Clayton
by Paul Sandby
(The Royal Collection)



“Lady Mary Churchill, Aunt to the Duchess of Gloucester”
by Paul Sandby
(The Royal Collection)



Lady Carrying a Tea Kettle
Paul Sandby
(The Royal Collection)



The Ladies Waldegrave
by Paul Sandby c. 1760 - 1770
(The Royal Collection)



A Female Figure
by Paul Sandby
(The Royal Collection)



A Group of Figures
by Paul Sandby c. 1780
(The Royal Collection)



Seated Girl
by Paul Sandby
(The Royal Collection)



'Miss Isherwoods, the Brewer's daughters, Windsor'
by Paul Sandby c, 1770 - 1780
(The Royal Collection)



The Misses Berry

14395

The Misses Berry
Paul Sandby c. 1780
(The Royal Collection)



Mrs Gandon, wife of the architect

14396

Mrs. Gandon, Wife of the Architect
by Paul Sandby
(The Royal Collection)



At Edinburgh
by Paul Sandby c. 1750
(The Royal Collection)



Lady Chambers

14409

Lady Chambers
by Paul Sandby
(The Royal Collection)



14410

Two Ladies in Conversation
by Paul Sandby
(The Royal Collection)



14411

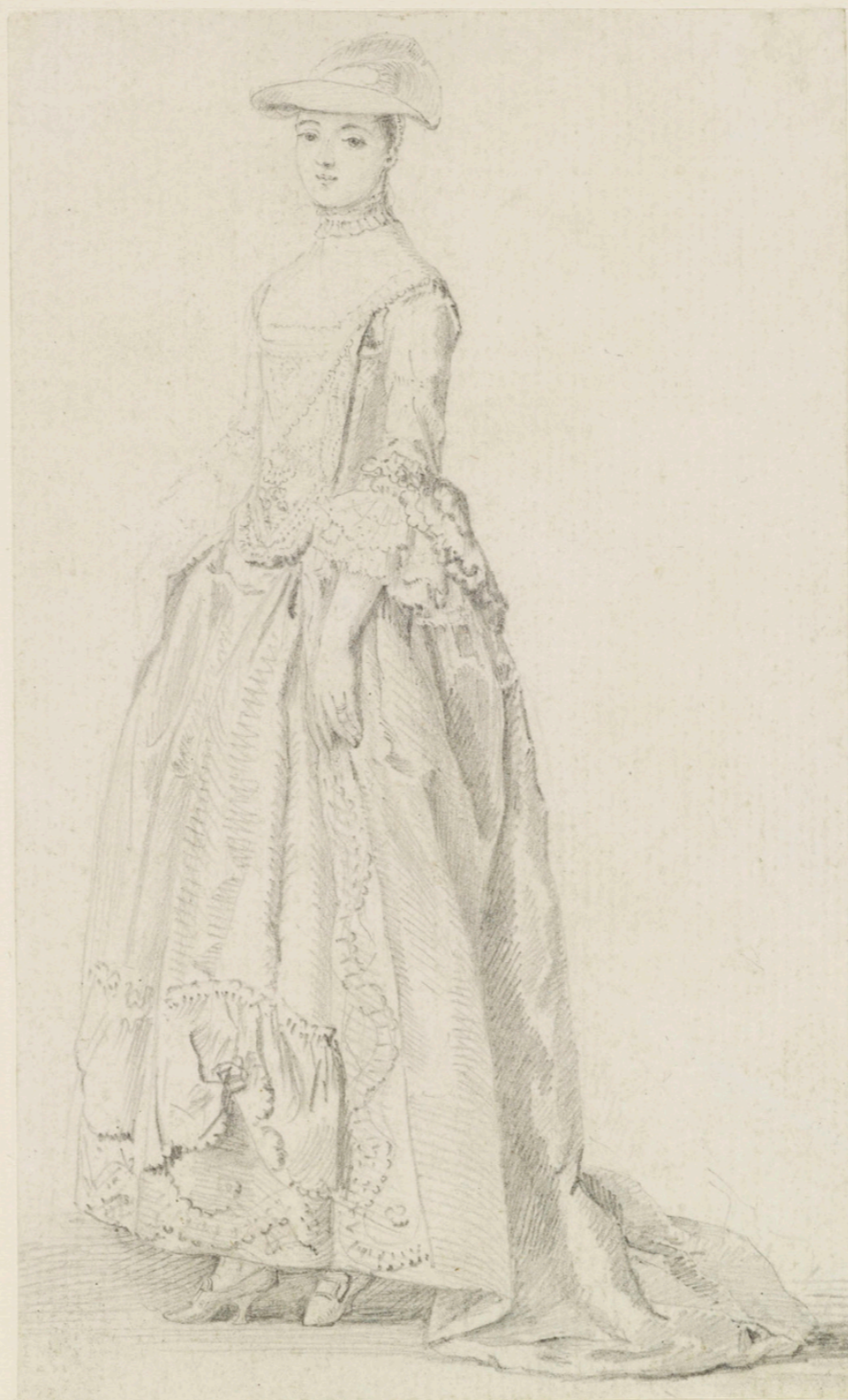
A Girl Reading a Book
by Paul Sandby
(The Royal Collection)



Mother of the D^{ss} of Gordon - dau. of Sir William Maxwell

14412

Lady Maxwell
by Paul Sandby
(The Royal Collection)



A Lady
by Paul Sandby
(The Royal Collection)



14414

A Young Girl Standing
by Paul Sandby
(The Royal Collection)



14415

A Young Girl Standing
by Paul Sandby c. 1752
(The Royal Collection)



Lady Ladd

1442 0

Lady Ladd
by Paul Sandby
(The Royal Collection)



Lady Ladd

14421

Lady Ladd
by Paul Sandby
(The Royal Collection)



14422

Young Girl Standing
by Paul Sandby
(The Royal Collection)



14423

Portrait of a Young Girl
by Paul Sandby
(The Royal Collection)



Mrs Eyre

14424 ✓

Miss Eyre
by Paul Sandby
(The Royal Collection)



14425

A Seated Female Figure
by Paul Sandby
(The Royal Collection)



14426

A Seated Female Figure
by Paul Sandby
(The Royal Collection)



14427

Portrait of a Young Girl Reading
by Paul Sandby
(The Royal Collection)



Lady Wallace

14428

Lady Wallace
by Paul Sandby
(The Royal Collection)



14429

Lady Wallace
by Paul Sandby
(The Royal Collection)



14430

A Lady Playing Cards
by Paul Sandby
(The Royal Collection)



14431

A Lady Playing Cards
by Paul Sandby
(The Royal Collection)



14432

A Old Lady Playing Cards
by Paul Sandby
(The Royal Collection)



14433

Lady Chambers
by Paul Sandby
(The Royal Collection)



14434

Lady Chambers
by Paul Sandby
(The Royal Collection)



14435

A Lady Reading at a Window
by Paul Sandby
(The Royal Collection)



14436

Miss Marsden
by Paul Sandby
(The Royal Collection)



Susan Carrol
by Paul Sandby
(The Royal Collection)



A Country Girl
by Paul Sandby c. 1770
(The Royal Collection)



14439

Group of Women
by Paul Sandby
(The Royal Collection)



14440

A Girl and Boy Standing
by Paul Sandby
(The Royal Collection)



14441

Lady Seated
by Paul Sandby
(The Royal Collection)



Somerset House Gardens
by Paul Sandby c. 1760
(The Royal Collection)



14454

A Lady at a Window Seat
by Paul Sandby
(The Royal Collection)



✓

14455

Girl with a Hat from Behind
by Paul Sandby
(The Royal Collection)



14457

Girl Standing
by Paul Sandby
(The Royal Collection)



14458

Girl Standing
by Paul Sandby
(The Royal Collection)



14459

Lady Elizabeth Harcourt
by Paul Sandby
(The Royal Collection)



14471

A Lady Seated in a Park
by Paul Sandby
(The Royal Collection)



14475

Girl in a Park
by Paul Sandby
(The Royal Collection)



At Edinburgh

14505

At Edinburgh
by Paul Sandby
(The Royal Collection)



14521

Maid Servant or Lady in Undress
by Paul Sandby
(The Royal Collection)



A cottage girl, at Wynnstay

14522

A Cottage Girl at Wynnstay
by Paul Sandby
(The Royal Collection)



A Lady Copying at a Drawing Table
Paul Sandby c. 1765
(Yale Center for British Art)



Woman in a Printed Gown Sewing
Paul Sandby
(Tate Gallery)



Portrait of a Young Lady at a Drawing Table
Paul Sandby



Two Women and a Boy
Paul Sandby



Two Women
Paul Sandby
(The Royal Collection)



“Miss Marsden”
Paul Sandby



Lady in a Bonnet
Paul Sandby c. 1760 - 1765
(Yale Center for British Art)



Lady Maynard
Paul Sandby c. 1757
(Yale Center for British Art)



Lady with a Fan
Paul Sandby c. 1760
(Yale Center for British Art)



Woman and Child Holding a Doll
Paul Sandby
(Yale Center for British Art)



Lady Amelia D'Arcy
by Paul Sandby c. Early 1760s
(Metropolitan Museum of Art)



Three Daughters of the 2nd Earl of Waldegrave and Miss Keppel
Paul Sandby



"The Toilet"
Paul Sandby



A Sleeping Woman
Paul Sandby
(Tate Gallery)



Girl With a Dog
Paul Sandby
(Tate Gallery)



The Misses Sandby of Norwich
Paul Sandby
(Yale Center for British Art)



A Family Group Knitting Outside a Cottage
by Paul Sandby
(Christie's Auction House)



A Family Group Knitting Outside a Cottage
by Paul Sandby
(Christie's Auction House)



Women in Riding Habits
by Paul Sandby
(Tate Gallery)



Two Girls Seated
Paul Sandby
(Yale Center for British Art)



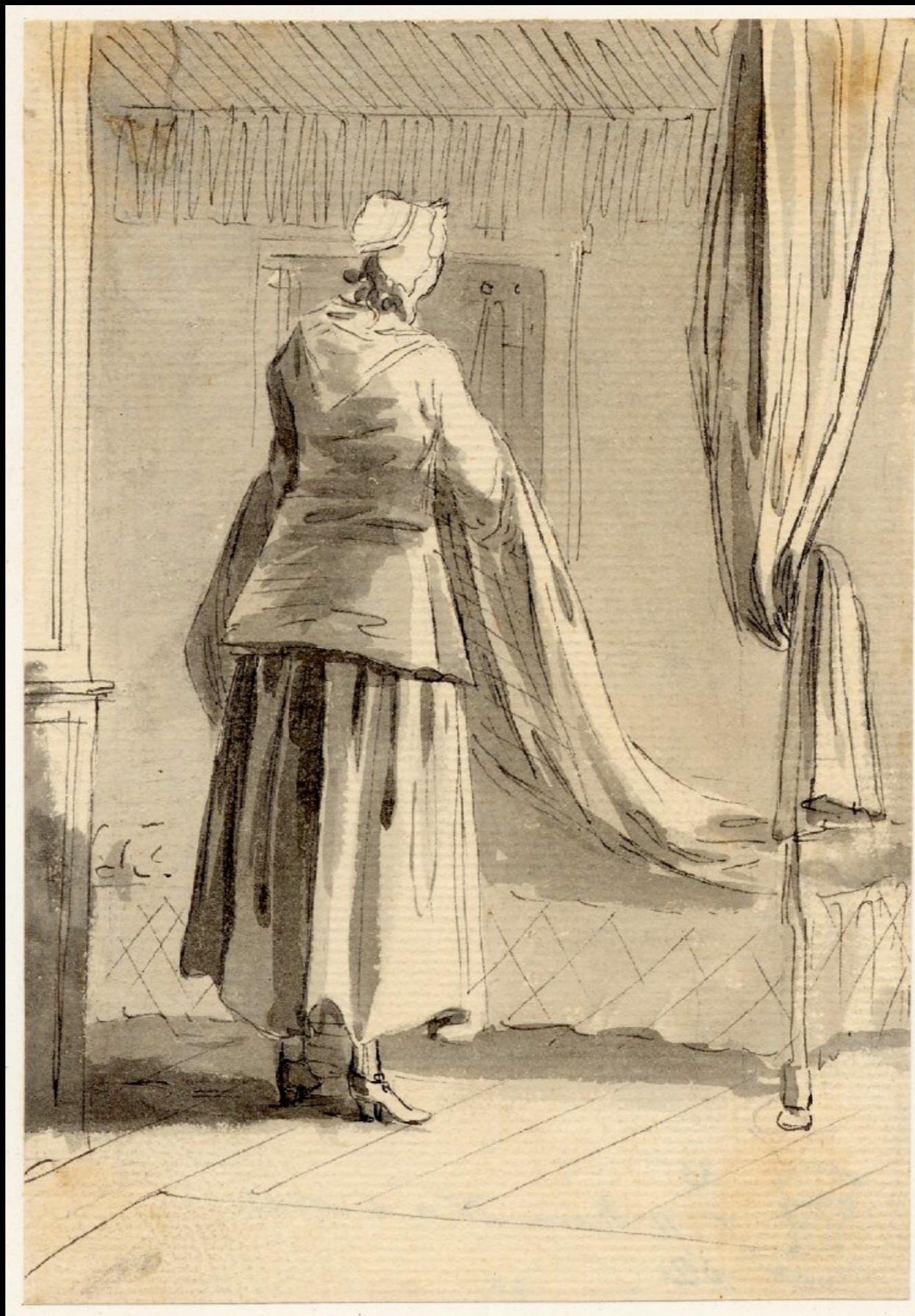
A Young Woman, Full Length, with Her Left Arm Outstretched
by Paul Sandby c. 1770
(Metropolitan Museum of Art)



Two Edinburgh Washerwomen
by Paul Sandby c. 1745
(The British Museum)



An Edinburgh Washerwomen
by Paul Sandby c. 1745
(The British Museum)



An Edinburgh Woman Making a Bed
by Paul Sandby c. 1745
(The British Museum)



An Old Edinburgh Woman
by Paul Sandby c. 1745
(The British Museum)



An Old Edinburgh Woman
by Paul Sandby c. 1745
(The British Museum)



An Edinburgh Woman with a Distaff
by Paul Sandby c. 1745
(The British Museum)



An Edinburgh Woman with Child
by Paul Sandby c. 1745
(The British Museum)



An Edinburgh Woman with Child
by Paul Sandby c. 1745
(The British Museum)



Two Edinburgh Women with Child
by Paul Sandby c. 1745
(The British Museum)



An Edinburgh Woman Having Her Hair Dressed
by Paul Sandby c. 1745
(The British Museum)



Two Women Seen from Behind
by Paul Sandby
(The British Museum)

Acknowledgements

The material contained within these slideshows is presented for educational purposes only. The 18th Century Material Culture Resource Center does not personally own any of the items depicted herein and is indebted to the countless museums, libraries, and private collectors who willingly share their collections with the public through the internet. Every attempt has been made to credit these organizations and individuals for their contributions as best as possible.

If there is a question you have regarding a particular item featured within a presentation, please contact the 18th Century Material Culture Resource Center and we will try to answer your inquiry as best as possible. If for any reason you feel there is any item that should not be presented here, or if there is an error in any listing, or if you know the source for any item whose credit is unknown, please inform us and we will make sure your concern is addressed as soon as possible.

Thank you!

- The 18th Century Material Culture Resource Center