

# 18th Century Material Culture

## Petticoats



# Linen Petticoats



American Linen Petticoat with Wool Embroidery from Vermont  
Mid 18th Century  
(Museum of Fine Arts, Boston)



American Petticoat of Linen and Cotton Ground with Wool Embroidery from New England  
Mid 18th Century  
(Museum of Fine Arts, Boston)

Wool / Wool Blend  
Petticoats



English or French Wool & Linen Petticoat with Wool Binding Tape and Ties  
Late 18th Century  
(Museum of Fine Arts, Boston)



English Wool and Cotton Petticoat with Wool Embroidery

c. 1750

(National Trust - Killerton, Devon)

# Cotton Petticoats



Petticoat of Printed Indian Cotton Chintz & Linen

c. 1750 - 1775

(Victoria & Albert Museum)



Petticoat of Printed & Painted Indian Cotton Chintz

c. 1750

(Victoria & Albert Museum)



Petticoat of Dyed & Painted Indian Cotton Chintz

c. 1750

(Victoria & Albert Museum)



Petticoat of Dyed & Painted Indian Cotton Chintz

c. 1750

(Victoria & Albert Museum)



Petticoat of Printed & Painted Indian Cotton Chintz

c. 1750

(Victoria & Albert Museum)



Petticoat of Mordant-Dyed and Resist-Dyed Indian Cotton

c. 1750

(Victoria & Albert Museum)

# Silk Petticoats



English Silk Damask & Linen Petticoat  
c. 1732 - 1742  
(Victoria & Albert Museum)



French Silk Petticoat  
c. 1780  
(Metropolitan Museum of Art)



English Silk Petticoat  
c. 1760  
(National Trust - Killerton, Devon)



English Silk Damask Petticoat with Brocaded Flowers from Spitalfields  
c. 1770 - 1780  
(National Trust - Snowhill Wade Costume Collection, Gloucestershire)



English Silk Petticoat with Brocaded Flowers

c. 1770

(National Trust - Snowhill Wade Costume Collection, Gloucestershire)



English Silk Brocade Petticoat (Unlined)

c. 1730 - 1770

(National Trust - Snowhill Wade Costume Collection, Gloucestershire)



English Silk Petticoat Brocaded with Silver Thread

c. 1750 - 1760

(National Trust - Snowhill Wade Costume Collection, Gloucestershire)



English Quilted Silk Satin Christening Petticoat

c. 1775

(National Trust - Killerton, Devon)

# Quilted Petticoats



English Quilted Silk Petticoat Hemmed with Blue Silk Tape

c. 1740 - 1760

(National Trust - Dudmaston, Shropshire)



English Quilted Silk Satin Petticoat  
c. 1731  
(National Trust - Killerton, Devon)



English Quilted Silk Satin Petticoat  
c. 1740 - 1760  
(National Trust - Killerton, Devon)



English Quilted Silk Satin Calamanco & Lambswool Petticoat

c. 1740 - 1770

(National Trust - Killerton, Devon)



English Quilted Silk Satin Calamanco Petticoat  
c. 1750 - 1760  
(National Trust - Killerton, Devon)



English Quilted Silk, Silk Satin, Cotton & Wool Petticoat  
c. 1750  
(National Trust - Killerton, Devon)



English Quilted Silk, Silk Satin, & Wool Petticoat

c. 1745 - 1760

(National Trust - Snowhill Wade Costume Collection, Gloucestershire)



English Quilted Silk & Silk Satin Petticoat Lined with Camlet Bound with Silk Ribbed Ribbon

c. 1750

(National Trust - Snowhill Wade Costume Collection, Gloucestershire)



English Quilted Silk Satin Petticoat Lined with Glazed Wool  
c. 1730 - 1780  
(National Trust - Snowhill Wade Costume Collection, Gloucestershire)



English Quilted Silk Satin Petticoat Lined with Thin Wool  
c. 1730 - 1780  
(National Trust - Snowhill Wade Costume Collection, Gloucestershire)



English Unfinished Quilted Silk Satin Petticoat Lined with Glazed Wool  
c. 1730 - 1780  
(National Trust - Snowhill Wade Costume Collection, Gloucestershire)



English Quilted Silk Taffeta Petticoat Lined with Glazed Wool  
c. 1730 - 1780  
(National Trust - Snowhill Wade Costume Collection, Gloucestershire)



English Quilted Silk Satin Petticoat Lined with Glazed Wool  
c. 1730 - 1780  
(National Trust - Snowhill Wade Costume Collection, Gloucestershire)



English Quilted Silk Satin Petticoat Lined with Glazed Wool  
c. 1730 - 1780  
(National Trust - Snowhill Wade Costume Collection, Gloucestershire)



English Quilted Silk Satin Petticoat Lined with Glazed Wool  
c. 1730 - 1780  
(National Trust - Snowhill Wade Costume Collection, Gloucestershire)



English Quilted Silk Satin Petticoat Lined with Glazed Wool  
c. 1730 - 1780  
(National Trust - Snowhill Wade Costume Collection, Gloucestershire)



English Quilted Silk Satin Petticoat Lined with Glazed Wool  
c. 1730 - 1780  
(National Trust - Snowhill Wade Costume Collection, Gloucestershire)



English Quilted Silk Satin, Calamanco & Lambswool Petticoat  
c. 1740 - 1770  
(National Trust - Killerton, Devon)



English Quilted Silk Satin, Calamanco & Linen Petticoat  
c. 1770  
(National Trust - Killerton, Devon)



English Unfinished Quilted Tafetta Petticoat  
c. 1760  
(National Trust - Killerton, Devon)



English Quilted Silk Satin Calamanco & Lambswool Petticoat  
18th Century  
(National Trust - Killerton, Devon)



Connecticut River Quilted Silk Petticoat with Woolen Batting & Linen Waistband  
by "S.W." 1755  
(Colonial Williamsburg)



English Quilted Silk Satin Petticoat from Wales

c. 1750

(National Trust - Killerton, Devon)



American Quilted Silk, Cotton Twill, and Glazed Wool Petticoat  
c. 1750s  
(Museum of Fine Arts, Boston)



New England Quilted Plain-Weave Silk Petticoat with Glazed Wool Lining  
1758  
(Museum of Fine Arts, Boston)



New England Quilted Linen and Cotton Ground Petticoat with Wool Embroidery  
Mid 18th Century  
(Metropolitan Museum of Art)



New England Quilted Linen and Cotton Ground Petticoat with Wool Embroidery  
Mid 18th Century  
(Metropolitan Museum of Art)



American Quilted Silk Satin Petticoat with Glazed Wool Lining  
Mid 18th Century  
(Museum of Fine Arts, Boston)



American or European Quilted Silk Petticoat  
Mid 18th Century  
(Metropolitan Museum of Art)



English Quilted Silk Petticoat  
Mid 18th Century  
(Metropolitan Museum of Art)



English Quilted Silk Petticoat  
Mid 18th Century  
(Metropolitan Museum of Art)



American Quilted Silk Petticoat  
18th Century  
(Metropolitan Museum of Art)



European Quilted Silk Petticoat  
18th Century  
(Metropolitan Museum of Art)



American Quilted Silk Petticoat  
18th Century  
(Metropolitan Museum of Art)



American Quilted Silk & Linen Petticoat  
18th Century  
(Metropolitan Museum of Art)



American Quilted Silk Satin Petticoat with Glazed Wool Lining  
18th Century  
(Museum of Fine Arts, Boston)



French Quilted Silk Petticoat  
18th Century  
(Metropolitan Museum of Art)



American Quilted Cotton, Silk & Cellulose Petticoat  
18th Century  
(Metropolitan Museum of Art)



American or European Quilted Silk Petticoat  
2nd Half 18th Century  
(Metropolitan Museum of Art)



New England Quilted Silk Petticoat

c. 1755 - 1775

(Colonial Williamsburg)



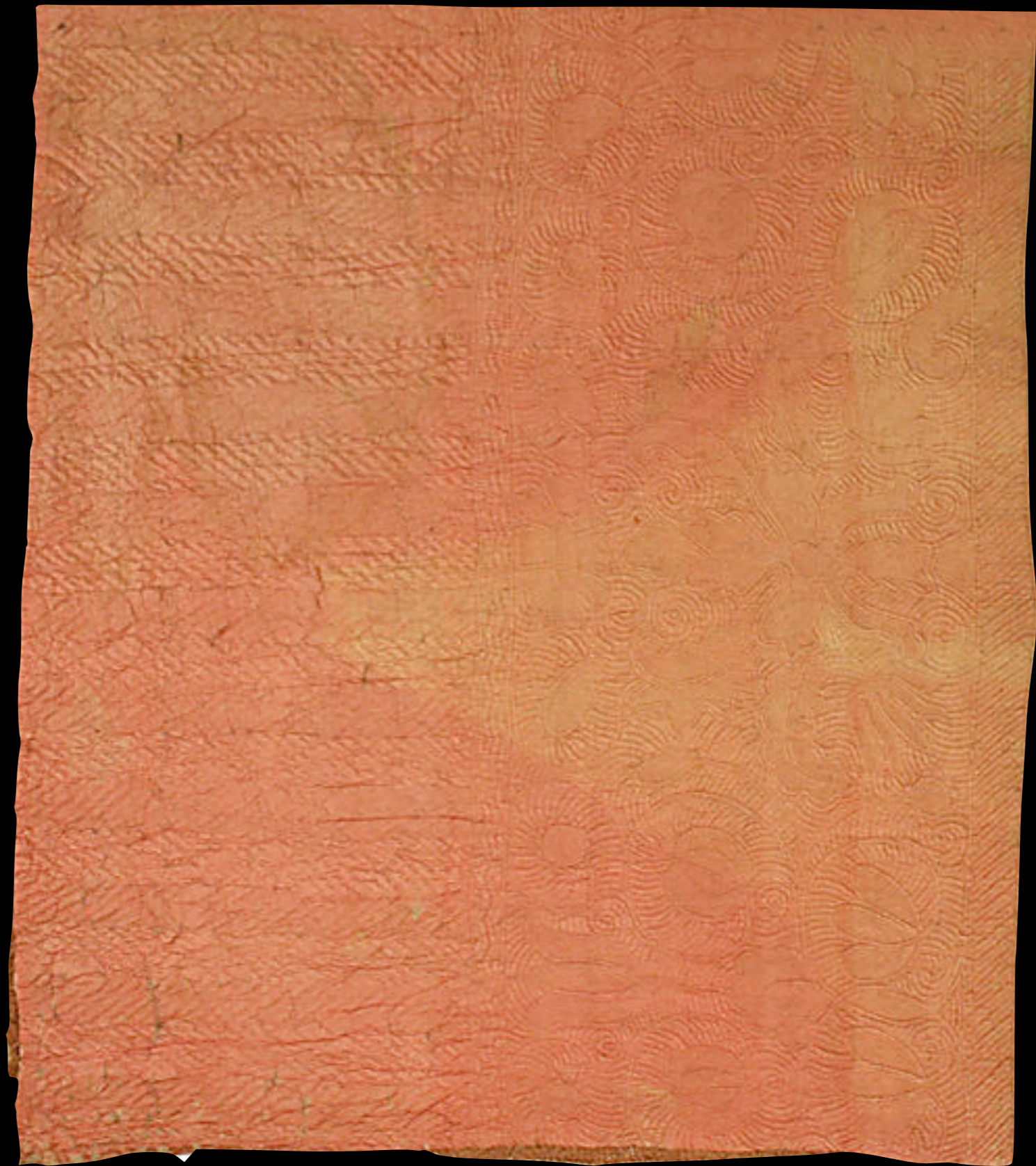
English Quilted Silk Satin Petticoat  
c. 1731  
(National Trust - Killerton, Devon)



American Quilted Silk, Linen & Cellulose Petticoat  
18th Century  
(Metropolitan Museum of Art)



French Quilted Silk & Cotton Petticoat  
18th Century  
(Metropolitan Museum of Art)



French Quilted Silk & Cotton Petticoat  
18th Century  
(Metropolitan Museum of Art)



American (?) Quilted Silk Petticoat with Worsted Twill Lining and Glazed Cotton Header  
18th Century  
(Museum of Fine Arts, Boston)



American Quilted Silk Petticoat  
2nd Half 18th Century  
(Metropolitan Museum of Art)



French Quilted Silk Petticoat  
3rd Quarter 18th Century  
(Metropolitan Museum of Art)



English Quilted Silk Satin Petticoat with Glazed Wool Lining, Cotton Waistband & Linen Ties  
c. 1780  
(Museum of Fine Arts, Boston)

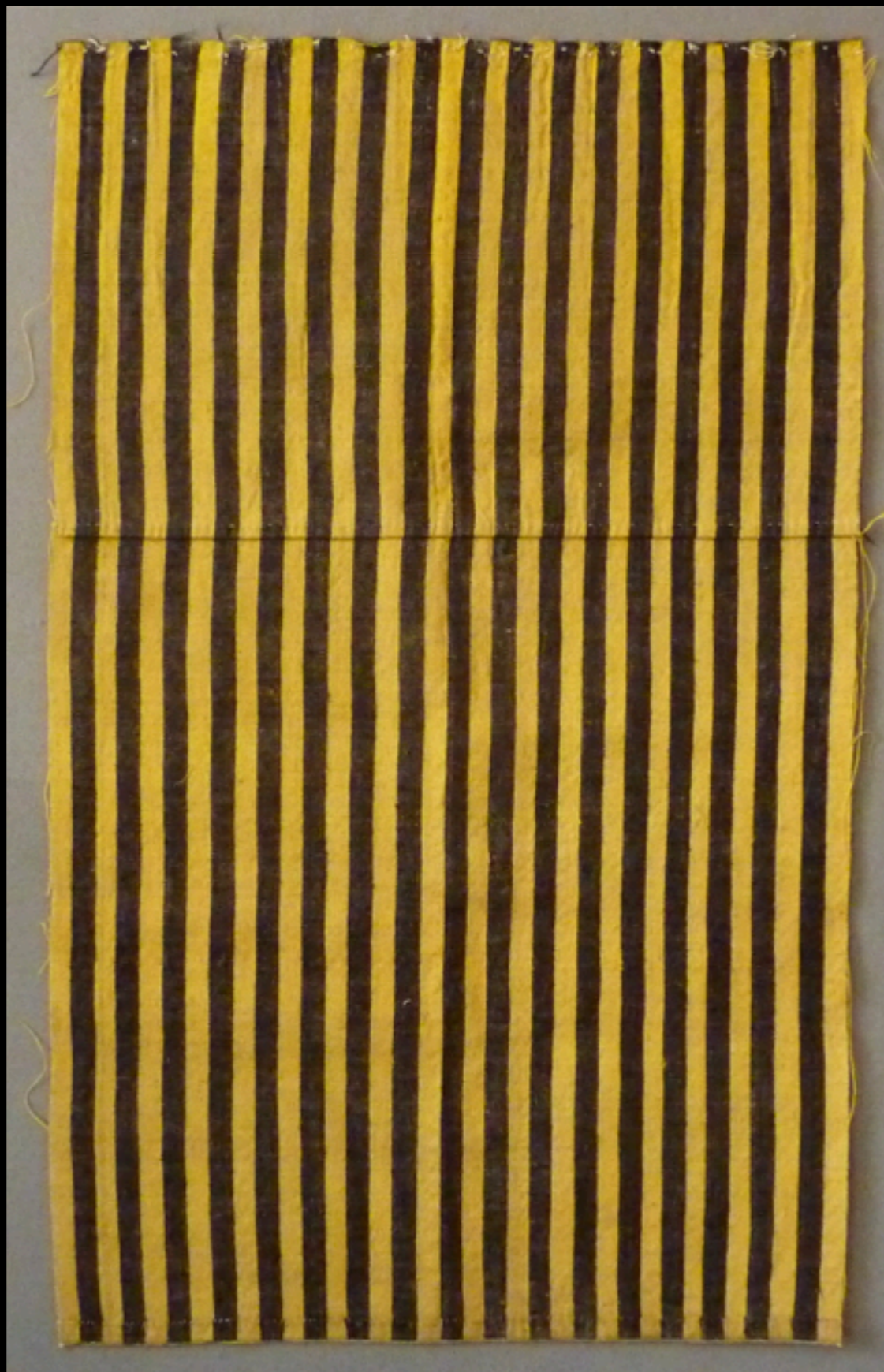


English Quilted Silk Satin Petticoat  
c. 1785  
(National Trust - Killerton, Devon)

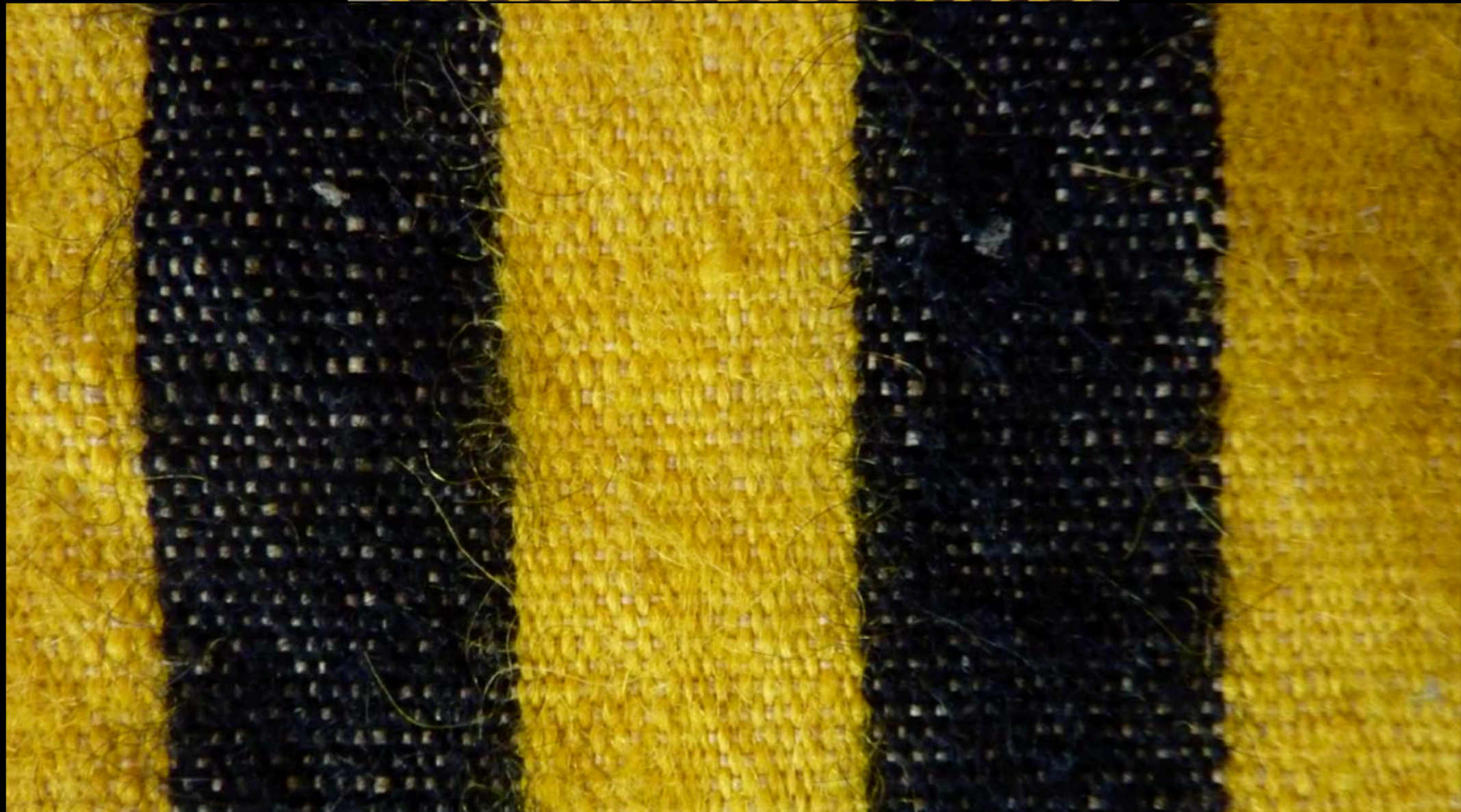


*American Stays & Quilted Silk Petticoat  
2nd Half 18th Century  
(Metropolitan Museum of Art)*

# Petticoat Lengths



Dutch Worsted Petticoat Length  
Mid 18th Century  
(Meg Andrews Antique Costumes & Textiles)



Dutch Worsted Petticoat Length  
Mid 18th Century  
(Meg Andrews Antique Costumes & Textiles)

# Petticoat Borders



Linen Petticoat with Resist Printed Border  
(Winterthur)



New England Crewel Work Petticoat Border of Linen with Wood Embroidery  
Mid 18th Century  
(Museum of Fine Arts, Boston)



New England Petticoat Border of Plain Weave Linen with Wool Embroidery  
1758  
(Museum of Fine Arts, Boston)



Ipswich, Massachusetts, Crewel Work Petticoat Border of Linen with Wool Embroidery  
1758  
(Museum of Fine Arts, Boston)



New England Crewel Work Band of Linen & Cotton with Wool & Silk Embroidery  
Possibly for a Petticoat or Valence c. 1725  
(Museum of Fine Arts, Boston)

# Petticoat Art



“The Three Grand Temptations...”  
by George Bickham the Elder, published by Carington Bowles c 1721  
(The British Museum)



The VAUXHALL DEMI-REP.

*Published according to Act, Aug. 20. 1772. by M. Darly, N<sup>o</sup>. 39. Strand.*

“THE VAUXHALL DEMI - REP.”  
by M. Darly 1772  
(The British Museum)



The SHOWER .

*Published according to Act Sept. 5. 1772. by M. Darly, 59 Strand.*

“The SHOWER”  
by M. Darly 1772  
(Lewis Walpole Library)



THE PETTICOAT.  
at the Fieri maschareta.

April 25. 1775  
by M<sup>th</sup> Darly 39 stward

“THE PETTICOAT. at the Fieri Maschareta”  
by Mathew Darly 1775  
(The British Museum)



*Lowliness is young Ambition's ladder,  
 Wherein the climber upward turns his face,  
 But when he once attains the upward road,  
 He then with the ladder turns his back,  
 Looks into the clouds - waves the base degree  
 Or scorns to set it down.*

1782  
**A SMUGGLING MACHINE**  
 OR  
*a Convenient Cosway for a Man in Miniature.*  
 Published Jan 27 1782 by H. Baskinbury New Bond Street N<sup>o</sup> 28.

"A SMUGGLING MACHINE ..."  
 by Hannah Mumphrey 1782  
 (The British Museum)

Ramb. Mag. Mar. 1706.



*The Rump Parliament.*

“The Rump Parliament”  
English 1786  
(The British Museum)

# Acknowledgements

The material contained within these slideshows is presented for educational purposes only. The 18th Century Material Culture Resource Center does not personally own any of the items depicted herein and is indebted to the countless museums, libraries, and private collectors who willingly share their collections with the public through the internet. Every attempt has been made to credit these organizations and individuals for their contributions as best as possible.

If there is a question you have regarding a particular item featured within a presentation, please contact the 18th Century Material Culture Resource Center and we will try to answer your inquiry as best as possible. If for any reason you feel there is any item that should not be presented here, or if there is an error in any listing, or if you know the source for any item whose credit is unknown, please inform us and we will make sure your concern is addressed as soon as possible.

Thank you!

- The 18th Century Material Culture Resource Center