

# 18th Century Material Culture Shifts, Shirts, & Bed Gowns



# Shifts



Linen Doll's Shift  
c. 1690 - 1730  
(Victoria & Albert Museum)



French Linen Shift  
Mid 18th Century  
(Musées Royaux d'Art et d'Histoire)



Linen Shift with Lexington, Massachusetts, Provenance  
Late 18th - Early 19th Century  
(Museum of Fine Arts, Boston)



Linen Shift that Belonged to Anne Van Rensselaer  
Late 18th Century  
(Cherry Hill, Albany, New York - Photo by Jenna Schnitzer)



Linen Shift that Belonged to Anne Van Rensselaer  
Late 18th Century  
(Cherry Hill, Albany, New York - Photo by Jenna Schnitzer)



Linen Shift that Belonged to Anne Van Rensselaer  
Late 18th Century  
(Cherry Hill, Albany, New York - Photo by Jenna Schnitzer)



Linen Shift that Belonged to Anne Van Rensselaer  
Late 18th Century  
(Cherry Hill, Albany, New York - Photo by Jenna Schnitzer)



Linen Shift that Belonged to Anne Van Rensselaer  
Late 18th Century  
(Cherry Hill, Albany, New York - Photo by Jenna Schnitzer)



Cotton Embroidered Linen Shift that Belonged to Anna Schantz of Lancaster County, Pennsylvania

c. 1775

(Winterthur - Photo by Cozy Bendesky)



Cotton Embroidered Linen Shift that Belonged to Anna Schantz of Lancaster County, Pennsylvania

c. 1775

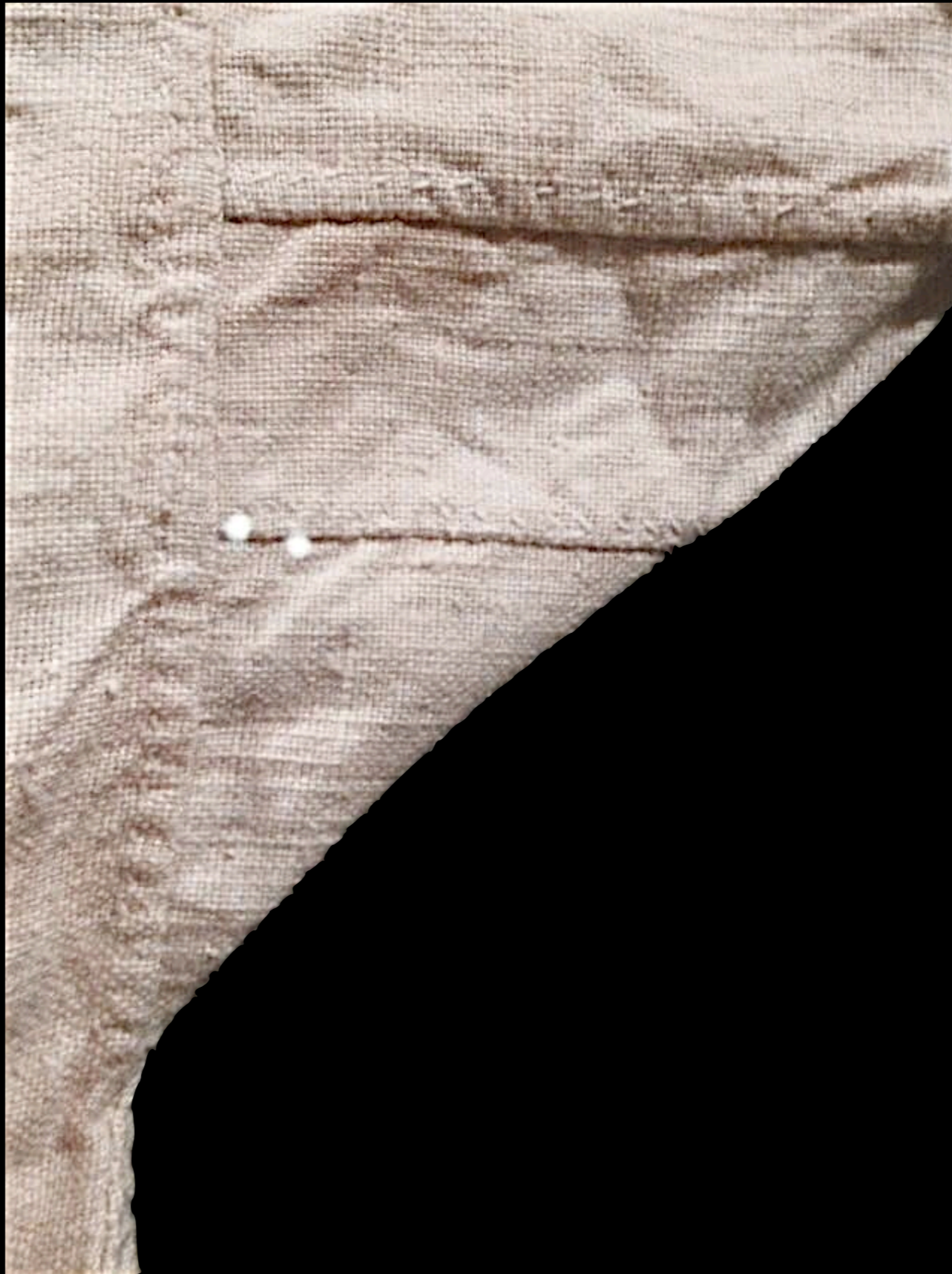
(Winterthur - Photo by Cozy Bendesky)



Cotton Embroidered Linen Shift that Belonged to Anna Schantz of Lancaster County, Pennsylvania

c. 1775

(Winterthur - Photo by Cozy Bendesky)



Cotton Embroidered Linen Shift that Belonged to Anna Schantz of Lancaster County, Pennsylvania

c. 1775

(Winterthur - Photo by Cozy Bendesky)



Cotton Embroidered Linen Shift that Belonged to Anna Schantz of Lancaster County, Pennsylvania  
c. 1775  
(Winterthur - Photo by Cozy Bendesky)



American Linen Shift  
c. 1780 - 1800  
(Metropolitan Museum of Art)



American Linen Shift  
c. 1780 - 1800  
(Metropolitan Museum of Art)



American Linen & Cotton Shift  
c. 1780  
(Metropolitan Museum of Art)



American Linen & Cotton Shift  
c. 1780  
(Metropolitan Museum of Art)

# Smocks



English Linen Smock  
c. 1615 - 1630  
(Victoria & Albert)



English Linen Smock  
c. 1615 - 1630  
(Victoria & Albert)

# Sleeve Ruffles



English or European Sleeve Ruffles of Cotton & Linen c. 1760 - 1785



English or European Sleeve Ruffles of Linen & Linen Embroidery c. 1750 - 1765

# Bed Gowns



Ivory Silk Twill Bedgown with Diamond Pattern

c. 1731 - 1740

(Museum of London)



Ivory Satin Bedgown with Diaper Pattern  
c. 1725  
(Christie's)



American Printed Linen Bedgown  
c. 1750 - 1775  
(Metropolitan Museum of Art)



“Morning”  
by Carington Bowles  
(The British Museum)



“Morning”  
by Carington Bowles  
(The British Museum)

Fig. 9.

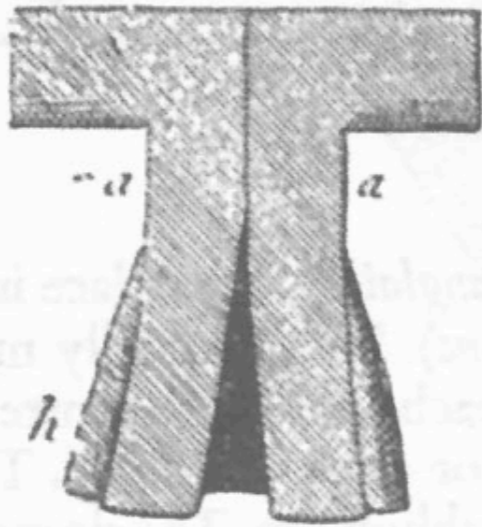


Fig. 8.

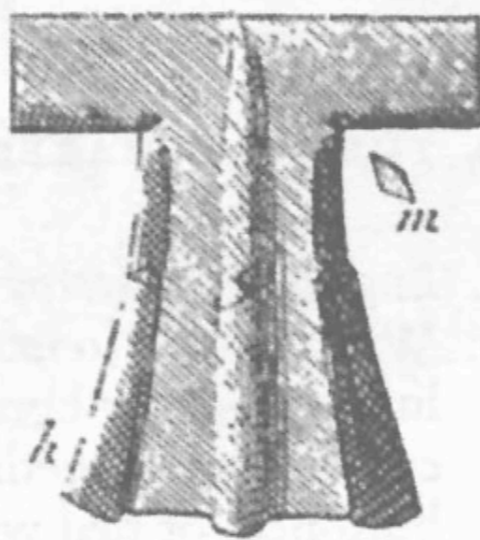


Fig. 7.

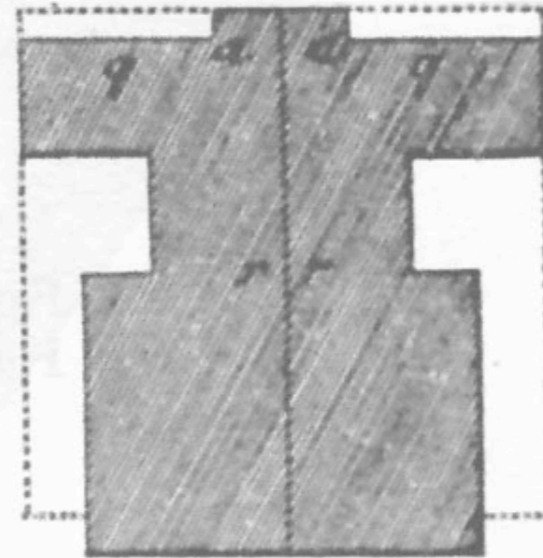


Fig. 12.

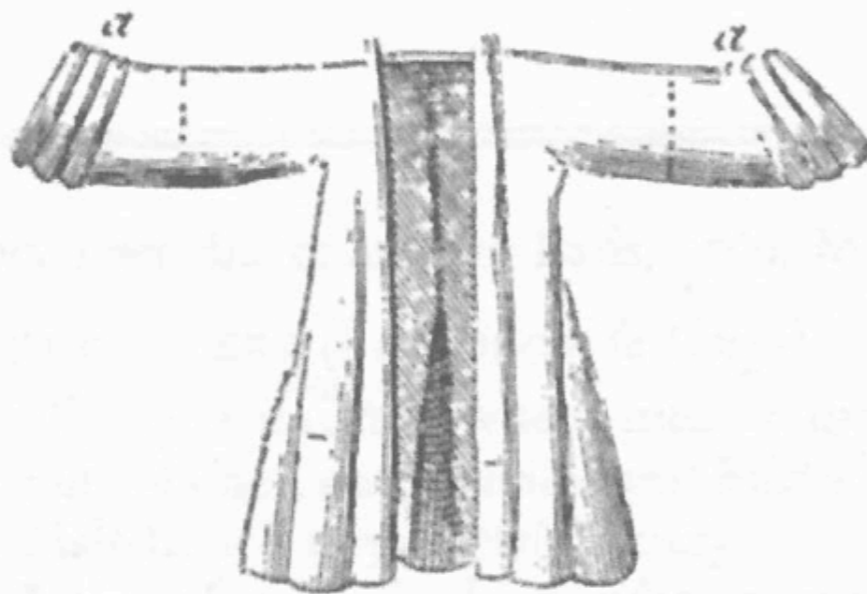


Fig. 11.

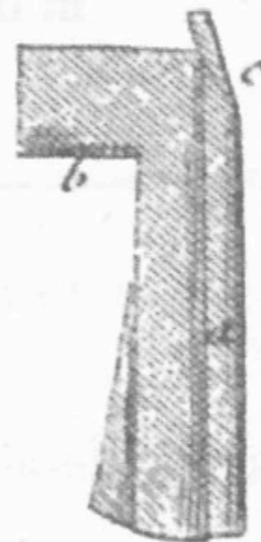


Fig. 10.



une aune.

# Bathing Gowns



Bathing Gown of Martha Washington  
c. 1767 - 1769  
(Mount Vernon Ladies Association)



Bathing Gown of Martha Washington  
c. 1767 - 1769  
(Mount Vernon Ladies Association)

# Peignoirs



A French Lady at her Toilet Table, Dressed in a Peignoir  
by Unknown c. 1750  
(Bowes Museum)

# Bed Jackets



English Silk Bed Jacket  
c. 1700 - 1750  
(Metropolitan Museum of Art)



English Silk Bed Jacket  
c. 1700 - 1750  
(Metropolitan Museum of Art)

# Banyans



English Silk Banyan  
c. 1750 - 1760  
(Victoria & Albert)

# Acknowledgements

The material contained within these slideshows is presented for educational purposes only. The 18th Century Material Culture Resource Center does not personally own any of the items depicted herein and is indebted to the countless museums, libraries, and private collectors who willingly share their collections with the public through the internet. Every attempt has been made to credit these organizations and individuals for their contributions as best as possible.

If there is a question you have regarding a particular item featured within a presentation, please contact the 18th Century Material Culture Resource Center and we will try to answer your inquiry as best as possible. If for any reason you feel there is any item that should not be presented here, or if there is an error in any listing, or if you know the source for any item whose credit is unknown, please inform us and we will make sure your concern is addressed as soon as possible.

Thank you!

- The 18th Century Material Culture Resource Center