

18th Century Material Culture Pots, Kettles, & Dutch Ovens



Trade Cards


 To be Sold by
Joseph Webb
 at His Store near Olivers Dock Boston



<p> Pot, Ash Kettles, & covers Fry kettles for Whaling Potts & Kettles of all sizes Skillets of all Sizes Large & small Spiders Chimney Backs of all sizes Clothiers Press Plates Stew Pans, with covers Tea Kettles. Jamb Plates Forge hammers, & Anvils </p>	<p> Baking-pans, & basins Cast Dags, of all sizes Fry-pans & fry Kettles Ox & Horse Cart. Waggon, & Chaise Boxes Mortars & Pestles Sash weights Half & Quar: hundred. 14 & 7^{1/2} ring & scales Hatters basins, & Irons Platt Irons, & heaters </p>
---	--

All sorts of Cast Iron work, done in the best
 Manner, on short Notice
 NB Sells all sorts of Ship Chandlery Stores &c

Paul Revere sculp

Joseph Webb Boston Advertisement
 by Paul Revere September 28, 1765
 (American Antiquarian Society)



To be Sold by
 Joseph Webb
 at His Store near Olivers Dock Boston



Pot & Ash Kettles, & covers	Pudding-pans, & basons
Fry kettles for Whaling	Cast Dags, of all sizes
Potts & Kettles of all sizes	Fry-pans & fry Kettles
Skillets of all Sizes	Ox & Horse Cart,
Large & small Spiders	Waggon, & Chaise Boxes

Joseph Webb Boston Advertisement
 by Paul Revere September 28, 1765
 (American Antiquarian Society)

Skillets of all Sizes

Large & small Spiders

Chimney Backs of all Sizes

Clothiers Press Plates

Stew Pans, with covers

Tea Kettles.

Jamb Plates

Forge hammers, & Anvils

Ox & Horse Cart.

Waggon, & Chaise Boxes

Mortars & Pestles

Sash weights

Half & Quar: hundred.

14 & 7^{lb} ring & Scalds

Hatters basons, & Irons

Platt Irons, & heaters

All sorts of Cast Iron work, done in y^e best

Manner, on short Notice

NB Sells all Sorts of Ship Chandlery Stores &c

Paul Revere Sculp

Joseph Webb Boston Advertisement
by Paul Revere September 28, 1765
(American Antiquarian Society)



Trade Card
18th Century
(Private Collection)

Imported from London & sold by Wholesale or Retail at the cheapest Rates

By Joseph and Daniel Waldo

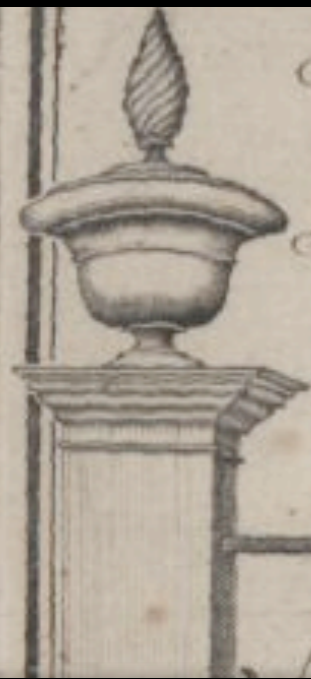
*At the Sign of the Elephant opposite to the Southeast Corner of the
Town House in Kingstreet.*

BOSTON NEW ENGLAND



*Brass Kettles, & Skillets, warming & frying Pans, Tea Kettles, Sauce Pans,
Coffee Mills & Pots & Drinking Pots, London Nails, Tacks & Brads of all Sizes,
Pewter Dishes, Plates, Bayonis, Dorringers, Breakfast Bowls, Spoons, Quart &*

Joseph and Daniel Waldo Advertisement 1749
Their Shop at the Southeast Corner of the Town House in Boston

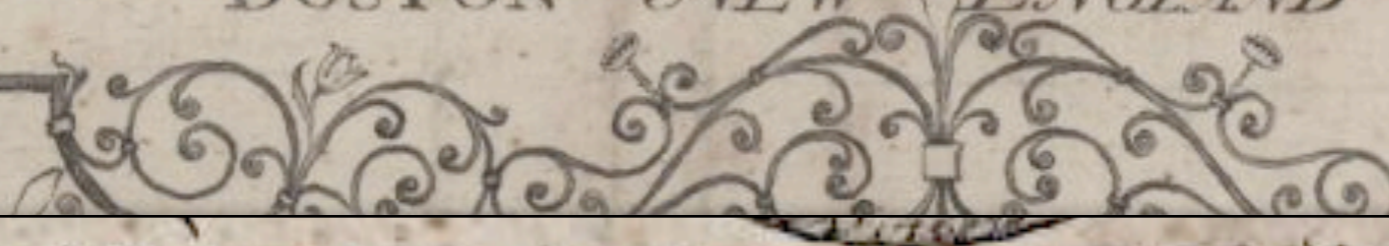


Imported from London & sold by Wholesale or Retail at the cheapest Rates

By Joseph and Daniel Waldo

*At the Sign of the Elephant opposite to the Southeast Corner of the
Town House in Kingstreet.*

BOSTON NEW ENGLAND



*Brass Kettles, & Skillets, warming & frying Pans, Tea Kettles, Sauce Pans,
Coffee Mills & Pots & Drinking Pots, London Nails, Tacks & Brads of all Sizes,
Pewter Dishes, Plates, Bayonis, Dorringers, Breakfast Bowles, Spoons, Quart &*



*Brass Kettles, & Skillets, warming & frying Pans, Tea Kettles, Sauce Pans,
Coffee Mills & Pots & Drinking Pots, London Nails, Tacks & Brads of all Sizes,
Pewter Dishes, Plates, Bayonis, Dorringers, Breakfast Bowles, Spoons, Quart &*

Joseph and Daniel Waldo Advertisement 1749
Their Shop at the Southeast Corner of the Town House in Boston

“Pots and Kettles of all Sizes”

Pots vs. Kettles



Round Pot "Pot Belly"



Straight Sided Kettle

Cast Iron Pots

Pots

To be Sold by
Joseph Webb
at His Store near Olivers Dock BOSTON

Pot Ash Kettles & covers
Fry kettles for Whaling
Pots & Kettles of all sizes
Skillets of all Sizes
Large & small Spiders

Spudding-pans, & basons
Cast Dags, of all sizes
Fry-pans & fry Kettles
Ox & Horse Cart,
Waggon, & Chaise, Boxes

Pots

Cast Iron Pots of the 18th Century typically demonstrate the presence of:

1. Angular (Pointed) Bale Lugs
2. Midline Casting Marks from the Mold in which they were created
3. Either Round Sprue Marks or Linear Casting Gate Marks on their base





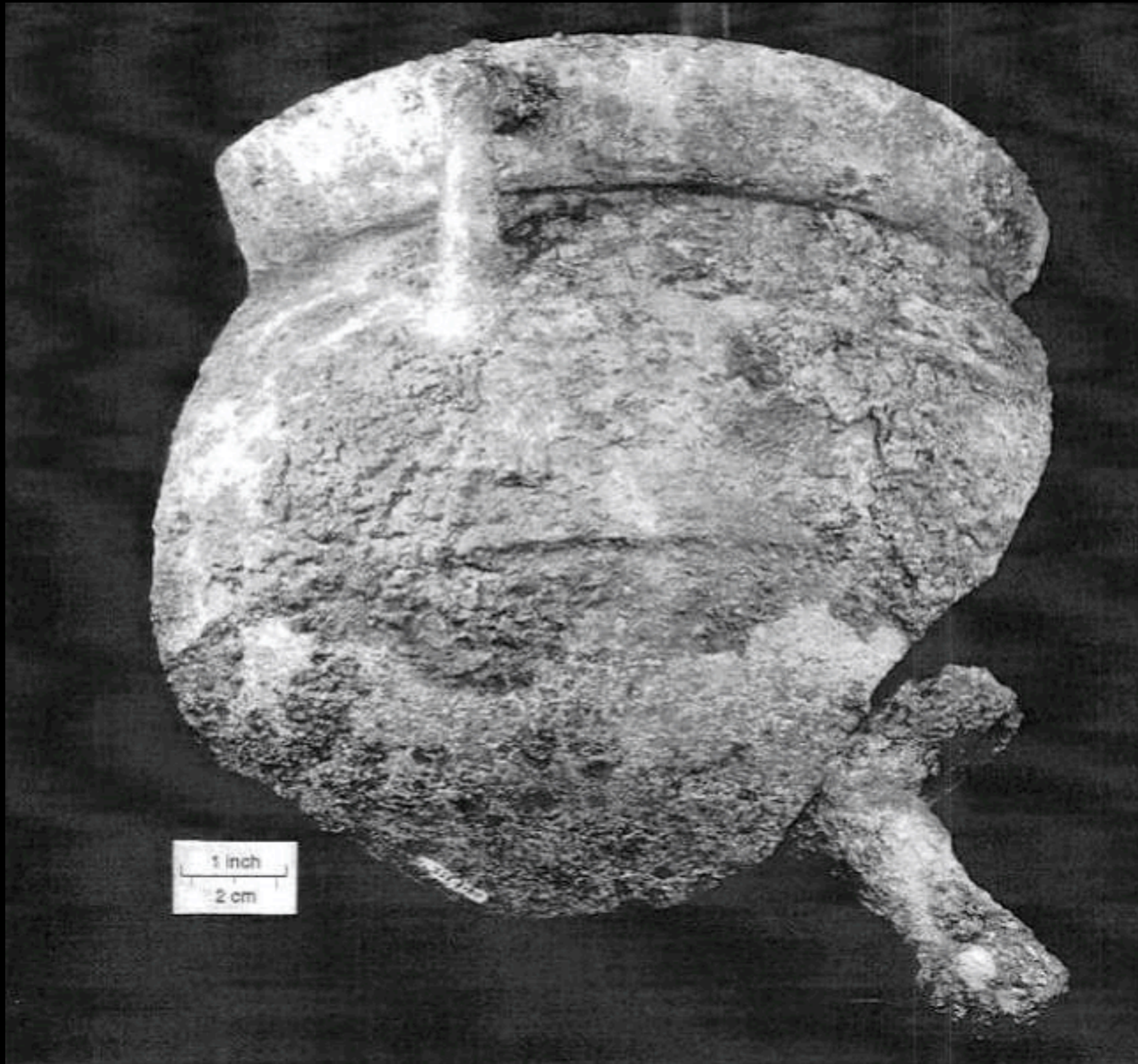
Cast Iron Pot Excavated at Jamestown, Virginia
17th Century
(Project Gutenberg)



English Cast Iron Pot Owned by Myles Standish of Plymouth, Massachusetts
c. 1600 - 1620
(Pilgrim Hall Museum, Plymouth, Massachusetts)



Cast Iron Pot
c. 1690
(Memorial Hall Museum)



Cast Iron Pot or Cauldron Recovered from the William Strickland Site, Kent County, Delaware
18th Century
(State of Delaware)



Cast Iron Pot

Recovered from the Brown's Ferry Vessel, Black River near Georgetown, South Carolina First Half 18th Century
(Rice Museum, Georgetown)



Cast Iron Pot
18th Century
(National Museums of Scotland)



Cast Iron Pot from the H.M.S. Industry Sunk off the Florida Coast
c. 1763



13" Rim Diameter Cast Iron Pot Fragment Recovered from the Thomas Daniels Site, Waterford Connecticut
18th Century
(Connecticut Department of Transportation)



Cast Iron Pot Fragment Recovered from the Broom Hall Plantation, Berkley County, South Carolina
18th Century
(Chicora Foundation Research Series)



Cast Iron Pot - Hubbard Site - Burned 1797
Williamsburg, Virginia
(Colonial Williamsburg Foundation)



Cast Iron Pot from the Gondola Philadelphia
Sunk on Lake Champlain in 1776
(Smithsonian Institution)



Cast Iron Pot or Cauldron
18th Century
(Memorial Hall Museum)



Cast Iron Pot or Cauldron
18th Century
(Memorial Hall Museum)



Cast Iron Pot
18th Century
(Skinner)



American Cast Iron Pot or Cauldron with Round Sprue Mark
Early 18th Century
(Private Collection)



American Cast Iron Pot or Cauldron with Round Sprue Mark
Early 18th Century
(Private Collection)



American Cast Iron Pot or Cauldron with Round Sprue Mark
Early 18th Century
(Private Collection)



Cast Iron Pot or Cauldron
18th Century
(Private Collection)



Cast Iron Pot
18th Century
(Private Collection)



Cast Iron Pot
18th Century
(Artemus Ward Homestead)





Cast Iron Pot Recovered from Blackbeard's Queen Anne's Revenge Sunk in 1718

Pre - 1718

(North Carolina Maritime Museum in Beaufort)



*American Cast Iron Pot or Cauldron with Straight Sprue Mark
"18th Century" but possibly later due to Rounded Bale Lugs
(Museum of Fine Arts, Boston)*

Cast Bronze Pots



Bronze Cooking Pot with Wrought Handle
16th Century
(Louwers Antiques)



Bronze Cooking Pot with Wrought Handle
16th Century
(Louwers Antiques)



Bronze Cooking Pot with Hoof Feet & Wrought Handle
17th Century
(Louwers Antiques)



Bronze Cooking Pot with Hoof Feet & Wrought Handle
17th Century
(Louwers Antiques)



Bronze Cooking Pot with Hoof Feet & Wrought Handle
17th Century
(Louwers Antiques)



Bronze Pot with Wrought Handle
17th Century
(Louwers Antiques)



Bronze Pot with Wrought Handle
17th Century
(Louwers Antiques)

Sheet Metal Pots





Dutch Sheet Metal Pot with Riveted Feet and Wood Cover
"The Satyr and the Peasant Family" by Jan Steen c. 1660 - 1662
(J. Paul Getty Museum)



Unknown

Cast Iron Kettles

Cast Iron Kettles

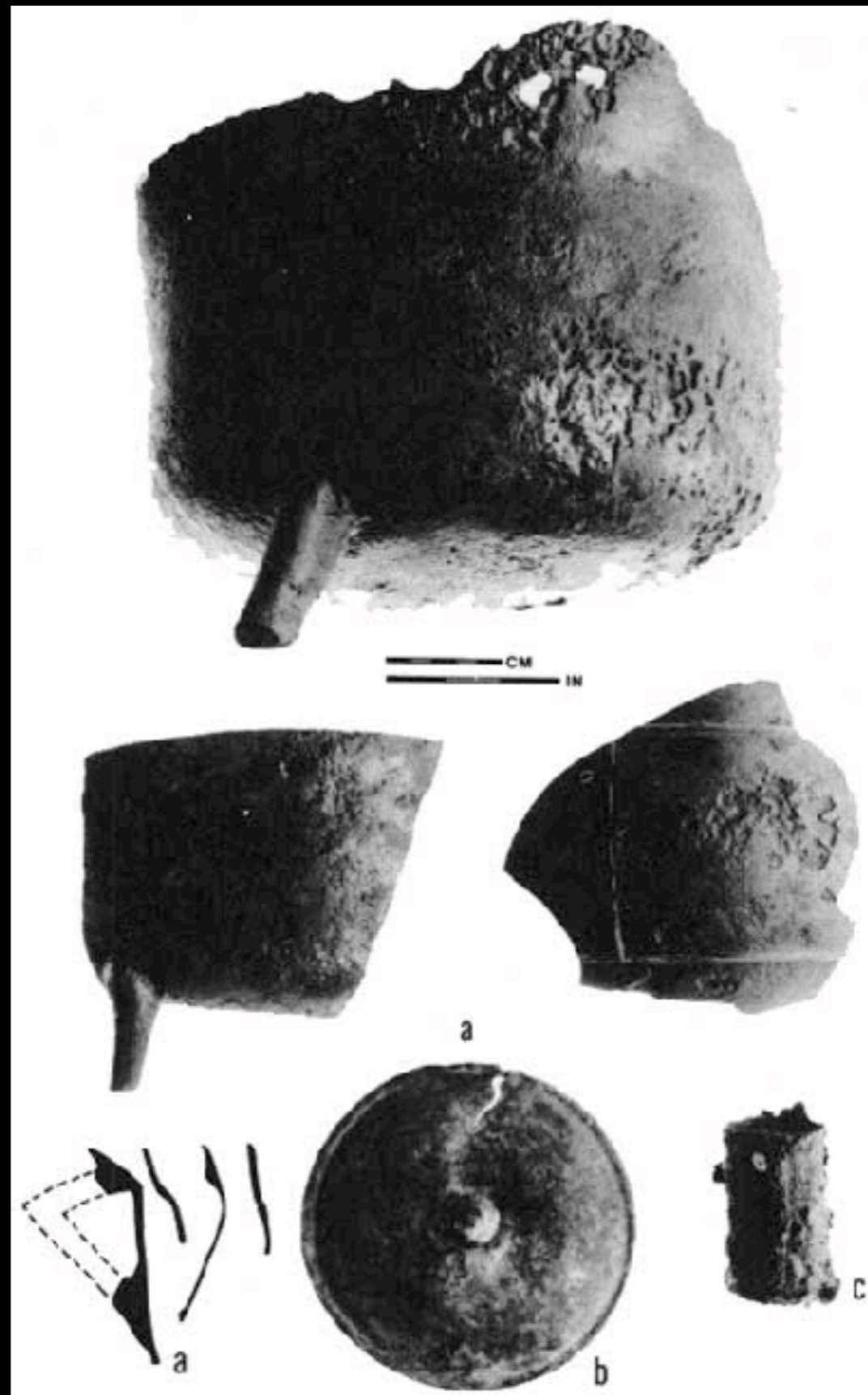
To be Sold by
Joseph Webb
at His Store near Olivers Dock BOSTON

Pot Ash Kettles & covers / Dudding-pans, & basons
Fry kettles for Whaling / Cast Dags, of all sizes
Potts & Kettles of all sizes / Fry-pans & fry Kettles
Skillets of all Sizes / Ox & Horse Cart,
Large & small Spiders / Waggon, & Chaise, Boxes



Cast Iron Kettle c. 1635 - 1775

Recovered from Privy 2: Three Cranes Tavern of Charlestown, Massachusetts - Burned by the British 17 June 1775
(City of Boston Archeology Program)



Cast Iron Kettle Fragments
Excavation of Fort Stanwix
(Fort Stanwix)



Cast Iron Kettle Fragments & Massachusetts Bounty Coat Button c. 1775
Recovered from the Site of Benedict Arnold's Hospital, Great Carrying Place in Maine
(Maine Historical Society)

FOST06006
03/30/201



Cast Iron Kettle Fragment
Recovered from Fort Stanwix
(Fort Stanwix)

FOST0000
03/30/201



Cast Iron Kettle Fragment
Recovered from Fort Stanwix



American 3 Legged, Straight Sprue, Cast Iron Kettle - 18th Century



American 3 Legged, Straight Sprue, Cast Iron Kettle
18th Century
(Private Collection)



American 3 Legged, Straight Sprue, Cast Iron Kettle
18th Century
(Private Collection)



American 3 Legged, Straight Sprue, Cast Iron Kettle
18th Century
(Private Collection)

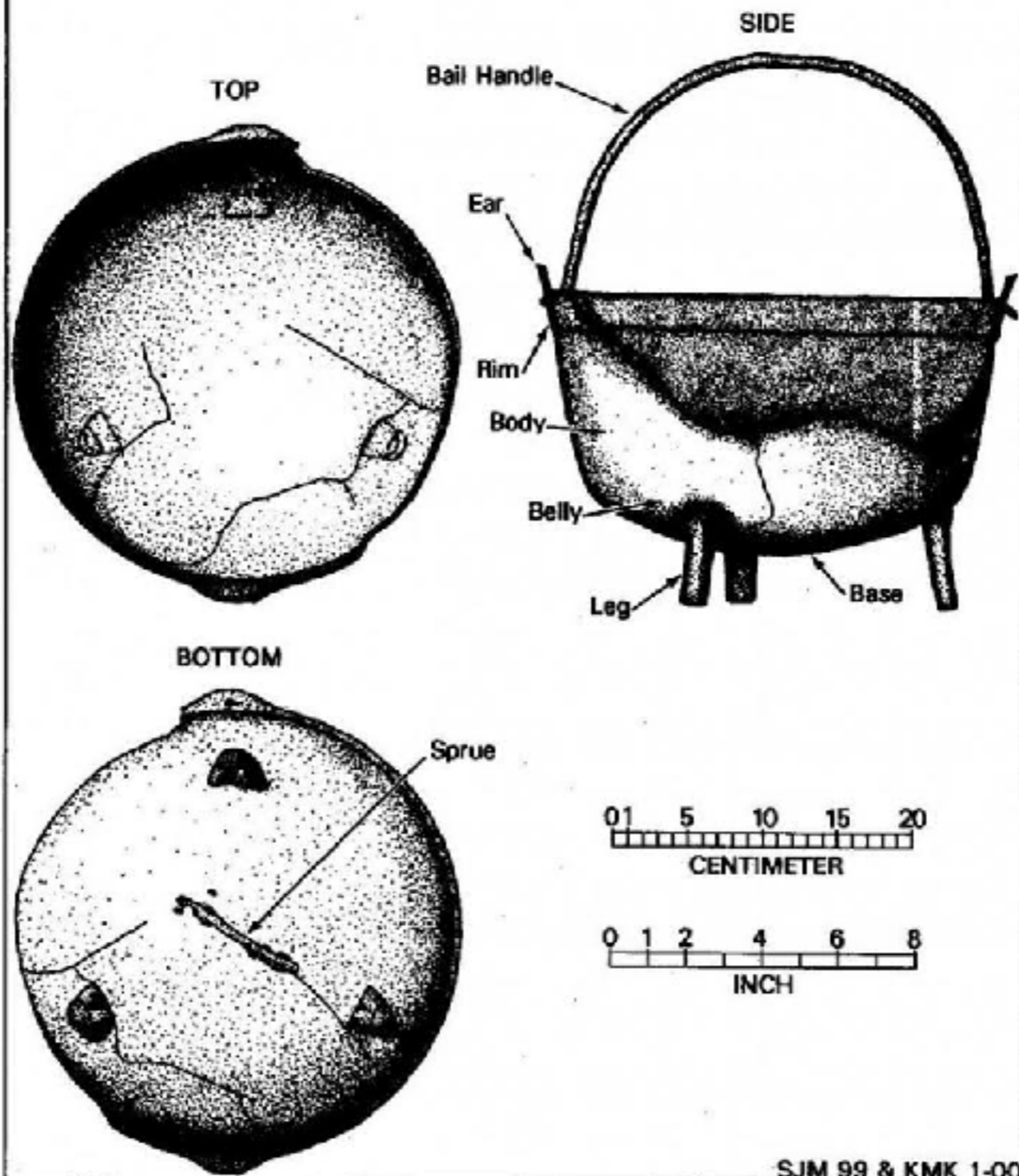


American 3 Legged, Straight Sprue, Cast Iron Kettle
18th Century
(Private Collection)



Cast Iron Kettle
From the Gondola, Philadelphia, Sunk on Lake Champlain 1776
(Smithsonian Institution)

CAST IRON CAULDRON
(074, 081, 147)



SJM 99 & KMK 1-00

Figure 82. Cast iron cauldron (074, 081, 147) with an 11.4 liter (3 gal) capacity.

Cast Iron Kettle Recovered from a Deposit of Artifacts Related to the American Revolution in Lake Champlain

c. 1776 - 1777

From: McLaughlin, Scott Arthur. "History Told from the Depths of Lake Champlain..." 2000



“Vue du Port de Rochefort, prise du Magasin des Colonies”
by Joseph Vernet 1762
(Musée national de la Marine)



“Vue du Port de Rochefort, prise du Magasin des Colonies”
by Joseph Vernet 1762
(Musée national de la Marine)



“Vue du Port de Rochefort, prise du Magasin des Colonies”
by Joseph Vernet 1762
(Musée national de la Marine)

Pointed Lug Cast Iron Kettles

Skillets of all Sizes
Large & small Spiders
Chimney Backs of all Sizes
Clothiers Press Plates
Stew Pans, with covers
Tea Kettles.
Jamb Plates
Forge hammers, & Anvils

Ax & Horse Cart.
Waggon, & Chaise Boxes
Mortars & Pestles
Sash weights
Half & Quar: hundred.
14 & 7^{lb} 10^{lb} ring & Scald
Hatters basins, & Irons
Flat Irons, & heaters

All sorts of Cast Iron work, done in y^e best
Manner, on short Notice
NB Sells all Sorts of Ship Chandlery Stores &c

Paul Revere Sculp



*A Very Rare Pointed Lug Tapered Side Cast Iron Kettle as Seen on the Joseph Webb Trade Card
18th Century
(G,S, Theberge Collection)*

Cast
Copper & Bronze
Kettles



Coppersmith from Auvergne
by Anne Claude Philippe de Tubières, Comte de Caylus after Edme Bouchardon 1737
(Metropolitan Museum of Art)



European Bronze Kettle
Early 18th Century
(Louwer Antiques)



European Bronze Kettle
Early 18th Century
(Louwer Antiques)

Brass

Sheet Metal Kettles



Dutch Brass Sheet Metal Kettles
c. 1575 - 1625
(Boijmans.nl)



French Sheet Metal Kettle with "Dog Ear" Lugs (Also Traded by the British)
Jamestown Site, Perry County, Illinois. Not far east of the Kaskaskia/Fort De Chartres Area



French Still Life Featuring a Brass Kettle with “Dog - Ear” Lugs & Iron Bale
by Jean-Baptiste-Siméon Chardin (1699 - 1777)
(Public Domain)



French Still Life Featuring a Smoke Blackened Brass Kettle with "Dog - Ear" Lugs & Iron Bale
by Jean-Baptiste-Siméon Chardin (1699 - 1777)
(Public Domain)



French Still Life Featuring a Smoke Blackened Brass Kettle with “Dog - Ear” Lugs & Iron Bale
by Jean-Baptiste-Siméon Chardin (1699 - 1777)
(Public Domain)



“LA BELLE CUISINIERE”
by Francois Boucher 1735
(Public Domain)



“LA BELLE CUISINIERE” - French Brass Kettle with “Dog Ear” Lugs & Iron Bale
by Francois Boucher 1735
(Public Domain)



"The Scullery Maid" - French Brass Kettle with "Dog Ear" Lugs & Iron Bale
by Jean Siméon Chardin c. 1738
(National Gallery of Art / William Clark Collection)



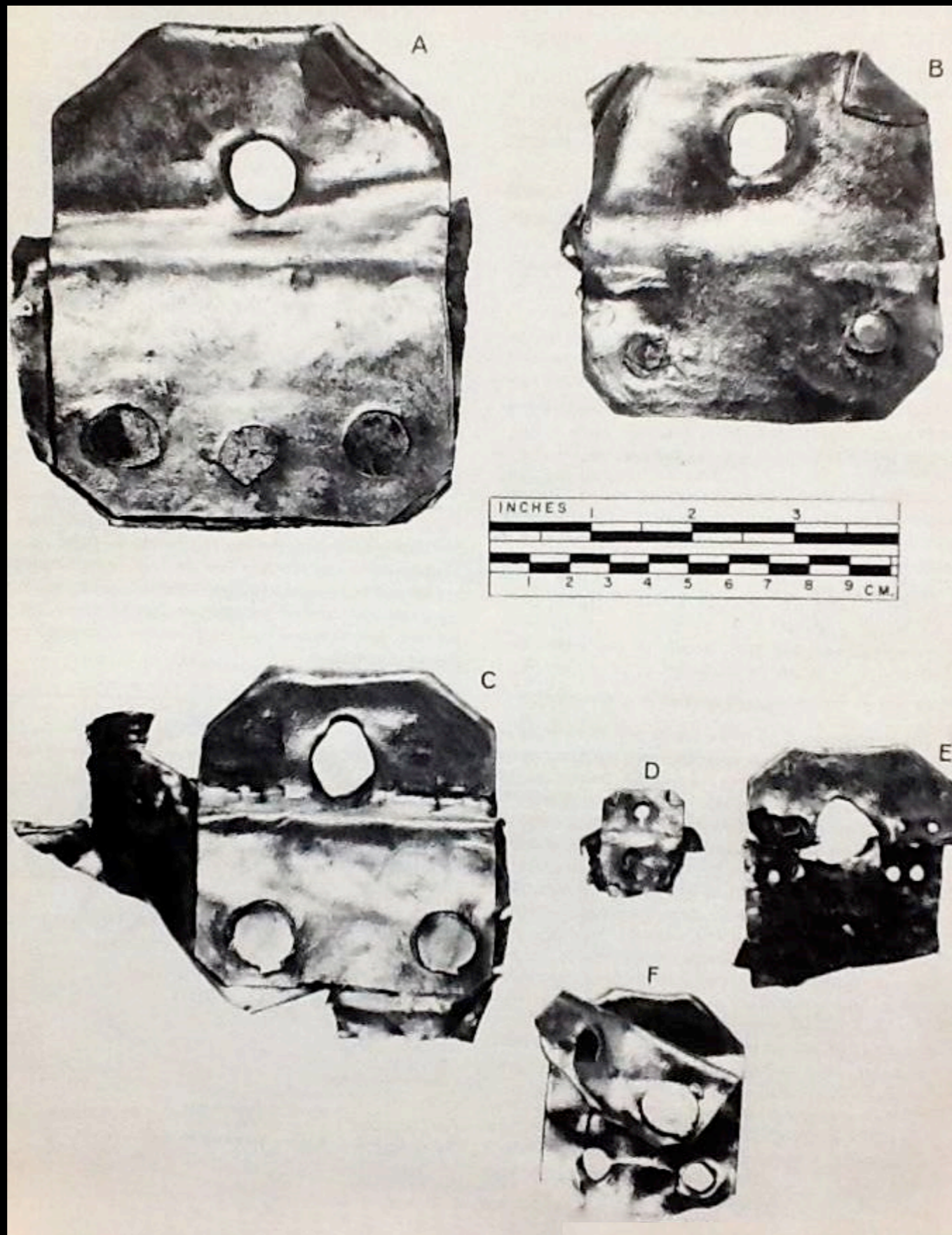
French Brass Sheet Metal Kettle with "Dog Ear" Lugs
From the Wreck of the Machault Sunk in the 1760 Battle of Restigouche in the Bay of Gaspé in Quebec Province c. 1755 - 1760
(Parks Canada)



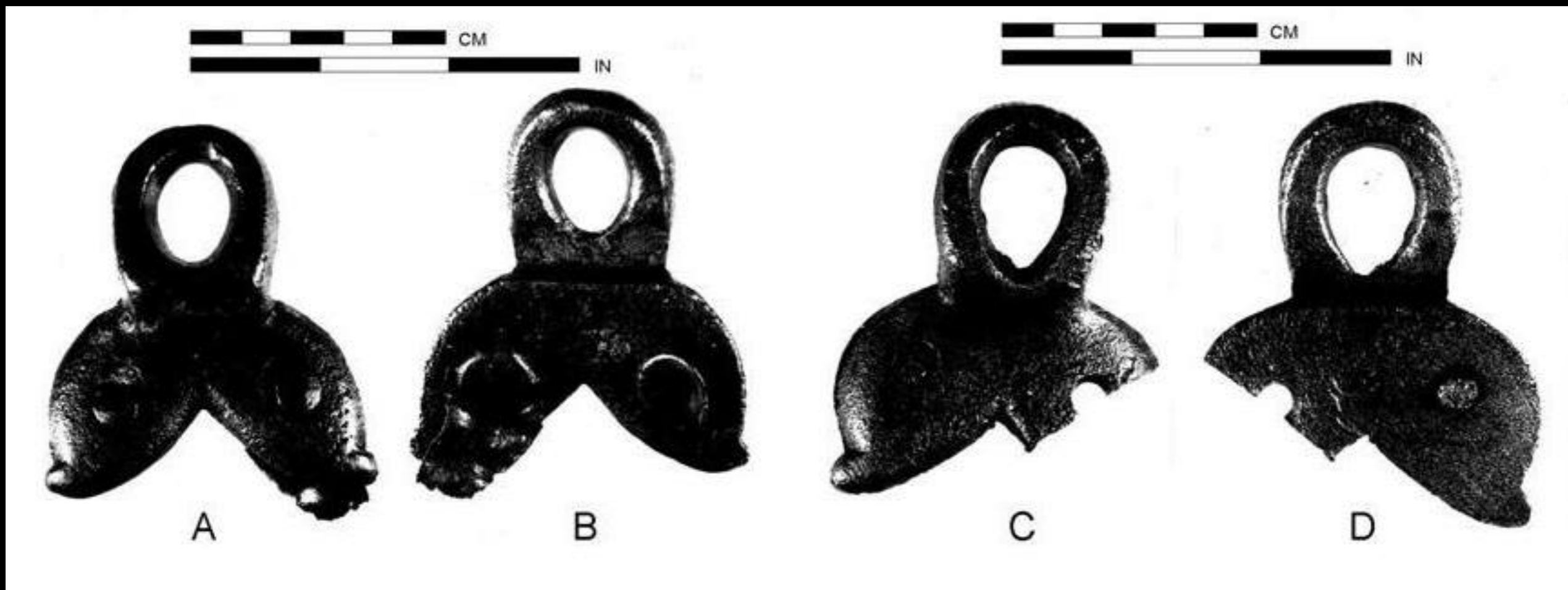
French Brass Sheet Metal Kettle with "Dog Ear" Lugs
From the Wreck of the Machault Sunk in the 1760 Battle of Restigouche in the Bay of Gaspé in Quebec Province c. 1755 - 1760
(Parks Canada)



One Gallon Brass Sheet Metal Trade Kettle with "Dog - Ear" Lugs & Iron Bale
Recovered on Moluntha's Town Site - A Logan Co., Ohio Shawnee Village Destroyed by the Kentucky Militia in October, 1786
Brass "Dog - Ear" Bale - Handle Hangers Excavated from Shawnee & Wyandot Village Hut & Trash Sites c. 1770 - 1790
(Greg Shipley)



Sheet Brass Kettle Lugs from Fort Michilimackinac
Double Riveted, Flat, Crimped, Rectangular Ears of Brass
(Fort Michilimackinac)



Kettle Lugs Recovered from Fort Loudon
18th Century
(Fort Loudon)



Brass Sheet Metal Kettle with Brass Lugs & Iron Bale
18th Century
(Nathan Barlow)



Brass Sheet Metal Kettle Brass Kettle with Brass Lugs & Iron Bale
18th Century
(Nathan Barlow / Gary Gregory Collection)



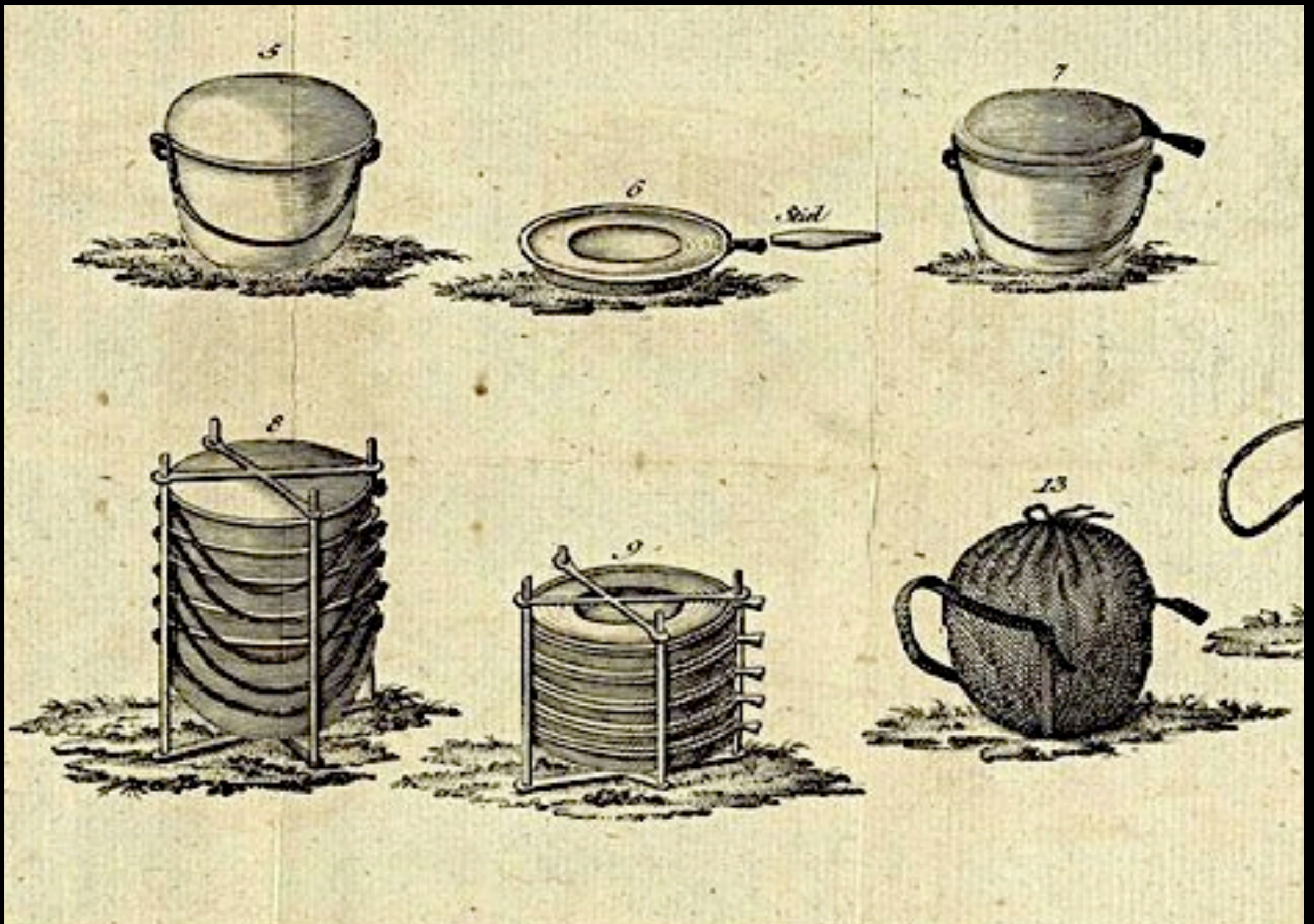
Brass Sheet Metal Kettle Brass Kettle with Brass Lugs & Iron Bale
18th Century
(Nathan Barlow / Gary Gregory Collection)



(Photograph Courtesy Asha Ananda)



European Brass Trade Kettle / "Trail Kettle" with Iron Lugs & Iron Bale Recovered from a Logan Co., Ohio Site
c. 1760 - 1790s
(Greg Shipley)



German Mess Kettles (No. 5) with Covers (Nos. 6 & 7) & Bag (No. 13)

“Was ist jedem Officier wahrend eines Fedzugs zu wissen nothig” (What Every Officer Needs To Know During A Campaign)

Copper Sheet Metal Kettles



French Still Life Featuring a Copper Kettle or Cook Pot
by Jean-Baptiste-Siméon Chardin (1699 - 1777)
(L'Acence)



French Still Life Featuring a Copper Kettle or Cook Pot
by Jean-Baptiste-Siméon Chardin (1699 - 1777)
(Public Domain)



French Still Life Featuring a Copper Kettle or Cook Pot
by Jean-Baptiste-Siméon Chardin (1699 - 1777)
(Christie's)



French Still Life Featuring a Copper Kettle or Cook Pot
by Jean-Baptiste-Siméon Chardin (1699 - 1777)
(wahooart.com)



"LA BELLE CUISINIERE"
by Francois Boucher 1735
(Public Domain)



F. Boucher pinxit

P. Audouin Sculp.

LA BELLE CUISINIÈRE

Voyez-vous l'écuyère, Matéourne?

Ce personnage est mauvais pour nous,

Parce que l'on dit qu'elle a été la Reine de la Robe de la Reine.

C'est gravé dans votre cœur,

Parce que vous l'avez vue.

“LA BELLE CUISINIÈRE”
by Francois Boucher 1735
(Public Domain)



French Copper Sheet Metal Kettle Recovered Near Fort St. Joseph
18th Century
(Fort St. Joseph, Michigan)



The Welsh Curate
by Thomas Hearne (1744 - 1817)
(Public Domain)



Plate 88 Copper kettle, no. 16, Oak Point Island Mound, Rainy Lake

Copper Sheet Metal Kettle No. 16 from the Oak Point Island Mound, Rainy Lake
18th Century

(From "Mounds of Sacred Earth - Burial Mounds of Ontario" by W. A. Kenyon)



Plate 89 Copper kettle, no. 16, Oak Point Island Mound, Rainy Lake

Copper Sheet Metal Kettle No. 16 from the Oak Point Island Mound, Rainy Lake
18th Century
(From "Mounds of Sacred Earth - Burial Mounds of Ontario" by W. A. Kenyon)

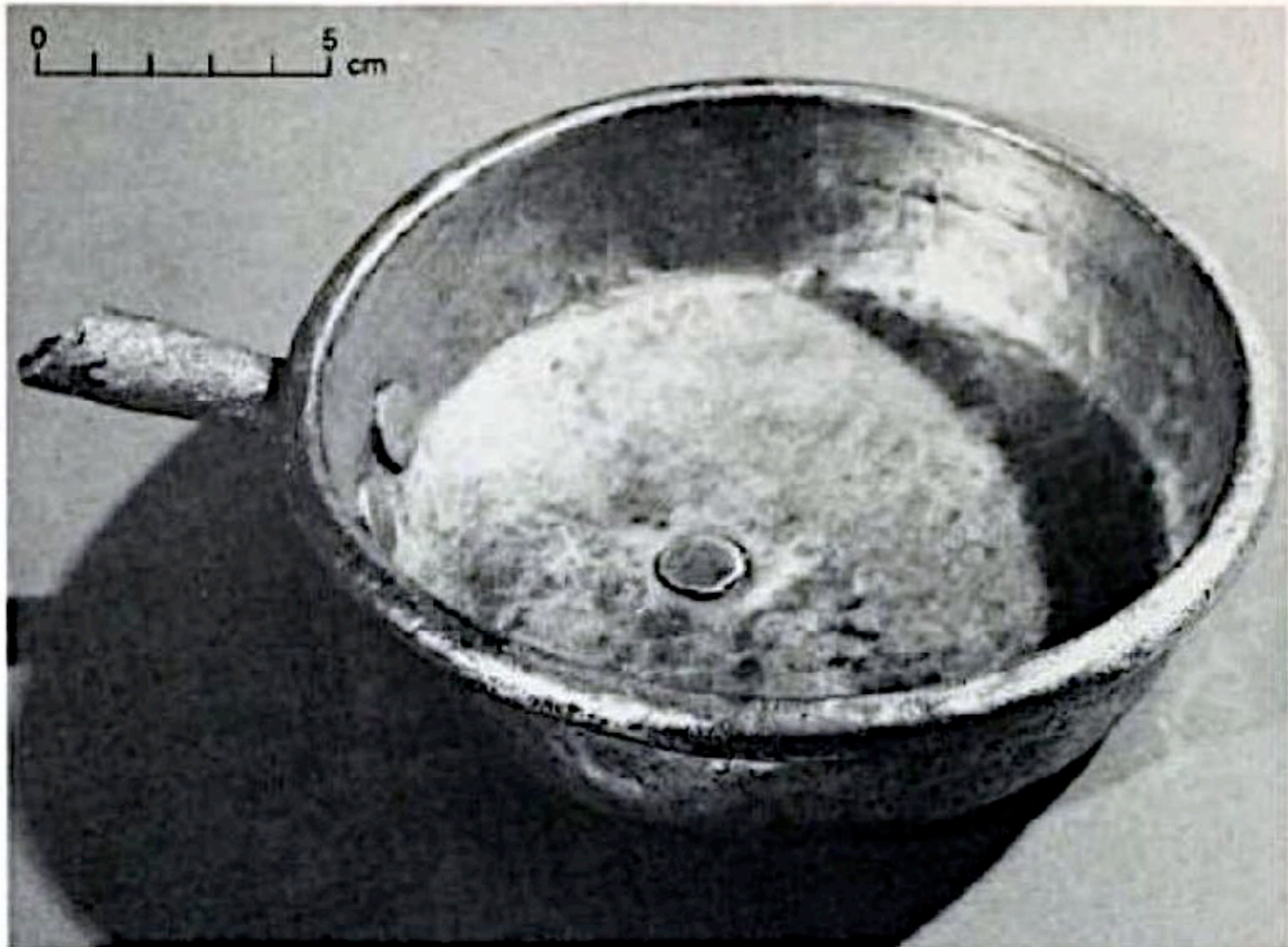


Plate 90 Lid of copper kettle, no. 16, Oak Point Island Mound, Rainy Lake

Copper Sheet Metal Kettle No. 16 from the Oak Point Island Mound, Rainy Lake
18th Century
(From "Mounds of Sacred Earth - Burial Mounds of Ontario" by W. A. Kenyon)



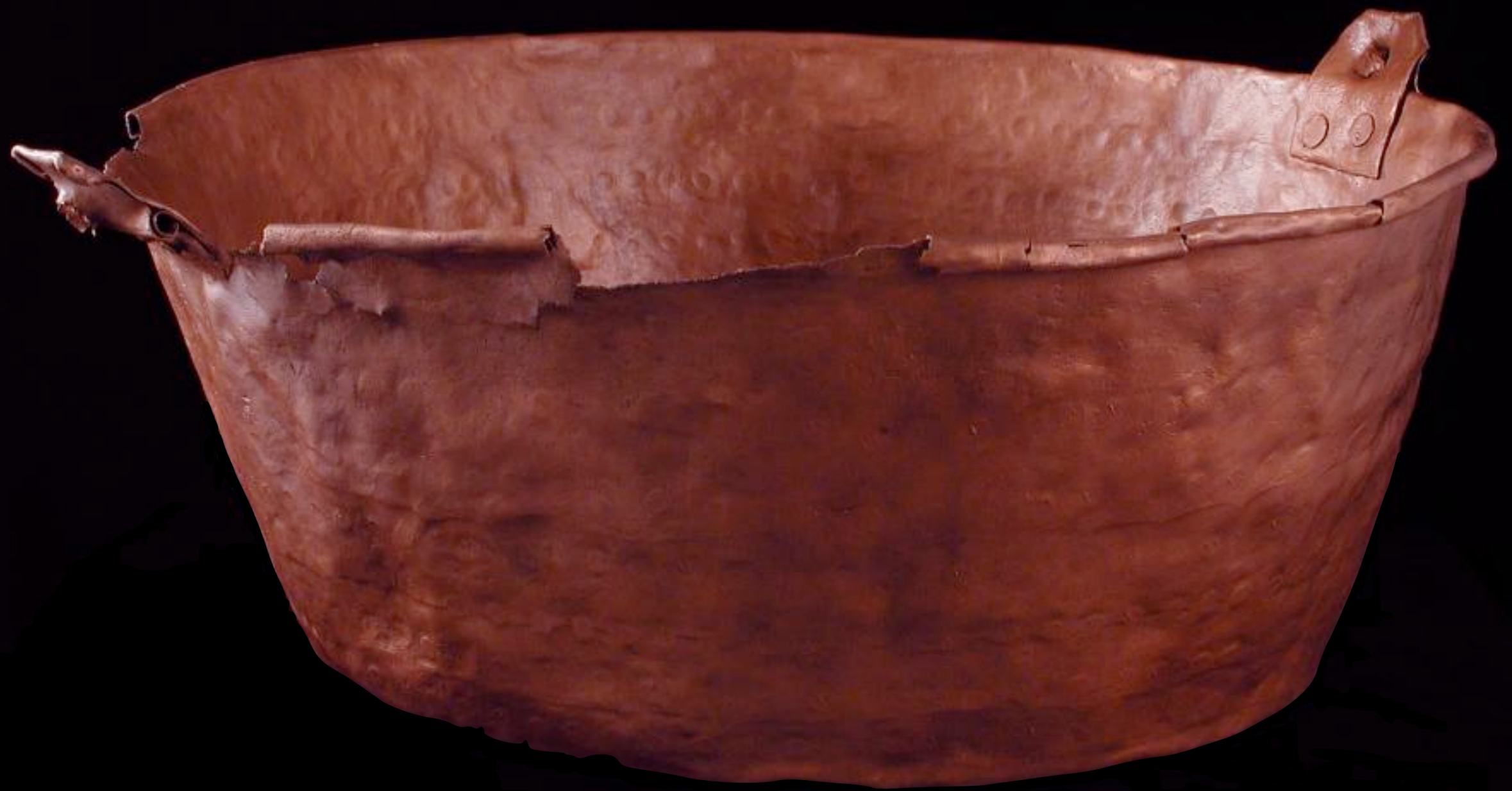
Detail: "Vue du Port de Rochefort, prise du Magasin des Colonies"
by Joseph Vernet 1762
(Musée national de la Marine)



Detail: "Vue du Port de Rochefort, prise du Magasin des Colonies"
by Joseph Vernet 1762
(Musée national de la Marine)



Detail: "Vue du Port de Rochefort, prise du Magasin des Colonies"
by Joseph Vernet 1762
(Musée national de la Marine)



Copper Sheet Metal Kettle with "Dog Ear" Lugs Found in the Vault of Maison Milot in Place Royale, Quebec City
c. 1645 - 1668
(Memorial Hall Museum)



A Set of Nesting Copper Sheet Metal Kettles with "Dog Ear" Lugs Shipped in a Trading Canoe
c. 1790
(Wheeler, Robert C. : "History Below the Rapids" In "Minnesota History" March, 1962. p. 24.)



Plate 83 Copper kettle, no. 21, Oak Point Island Mound, Rainy Lake

Copper Sheet Metal Kettle with "Dog Ear" Lugs from the Oak Point Island Mound, Rainy Lake
18th Century
(From "Mounds of Sacred Earth - Burial Mounds of Ontario" by W. A. Kenyon)



Plate 86 Copper kettle, no. 23, Oak Point Island Mound, Rainy Lake



Plate 87 Copper kettle, no. 22, Oak Point Island Mound, Rainy Lake

126

Copper Sheet Metal Kettles from the Oak Point Island Mound, Rainy Lake
18th Century
(From "Mounds of Sacred Earth - Burial Mounds of Ontario" by W. A. Kenyon)

GRPO 00006058
08/27/2009



French Copper Sheet Metal Kettle & Lug Fragment
18th Century
(Grand Portage National Monument, Minnesota)

GRPO 00015922

08/24/2009



Wrought Iron French Copper Sheet Metal Kettle Lug
18th Century
(Grand Portage National Monument, Minnesota)

GRPO 00008082

08/27/2009



French Copper Kettle Fishtail Lug
18th Century
(Grand Portage National Monument, Minnesota)

Tin Kettles



Printed for & Sold by CARINGTON BOWLES .

A HOLIDAY DIVERSION .

at N^o 69 in S^t Pauls Church Yard, LONDON .

“A HOLIDAY DIVERSION”
by Carington Bowles c.1782
(Lewis Walpole Library)

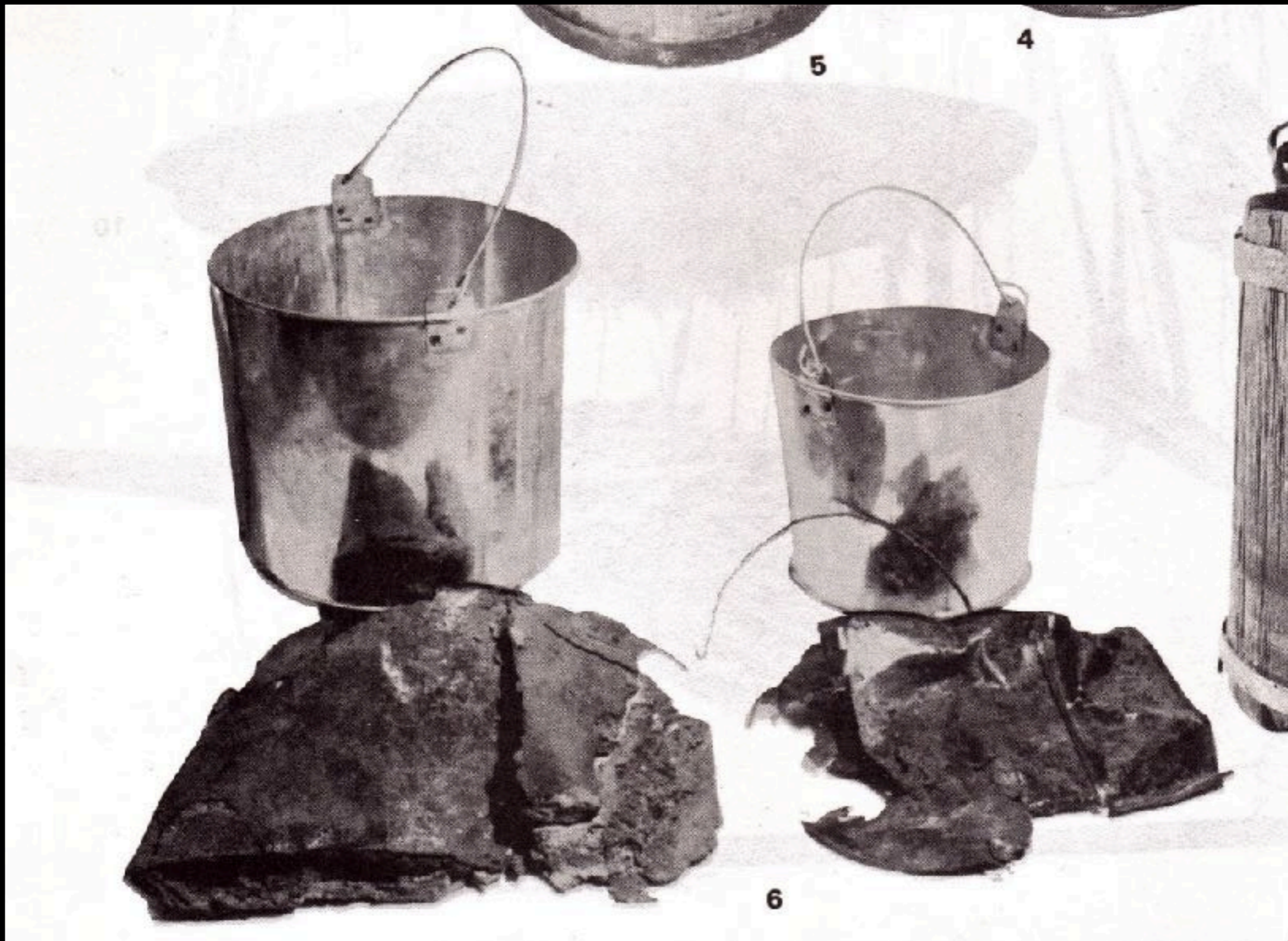


OUT SIDE - SECTION OF CAMP KETTLE
FORT TICONDEROGA

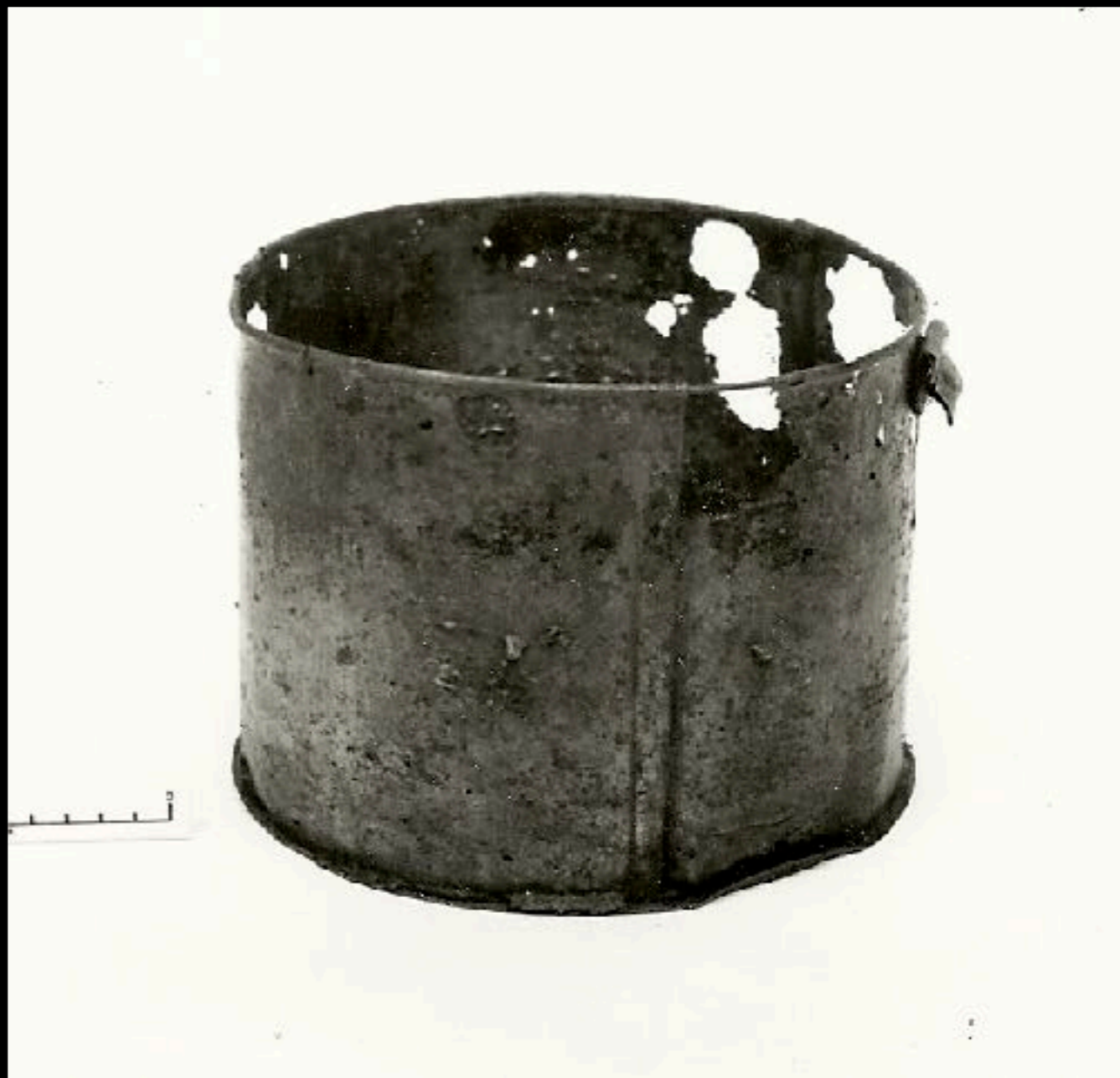
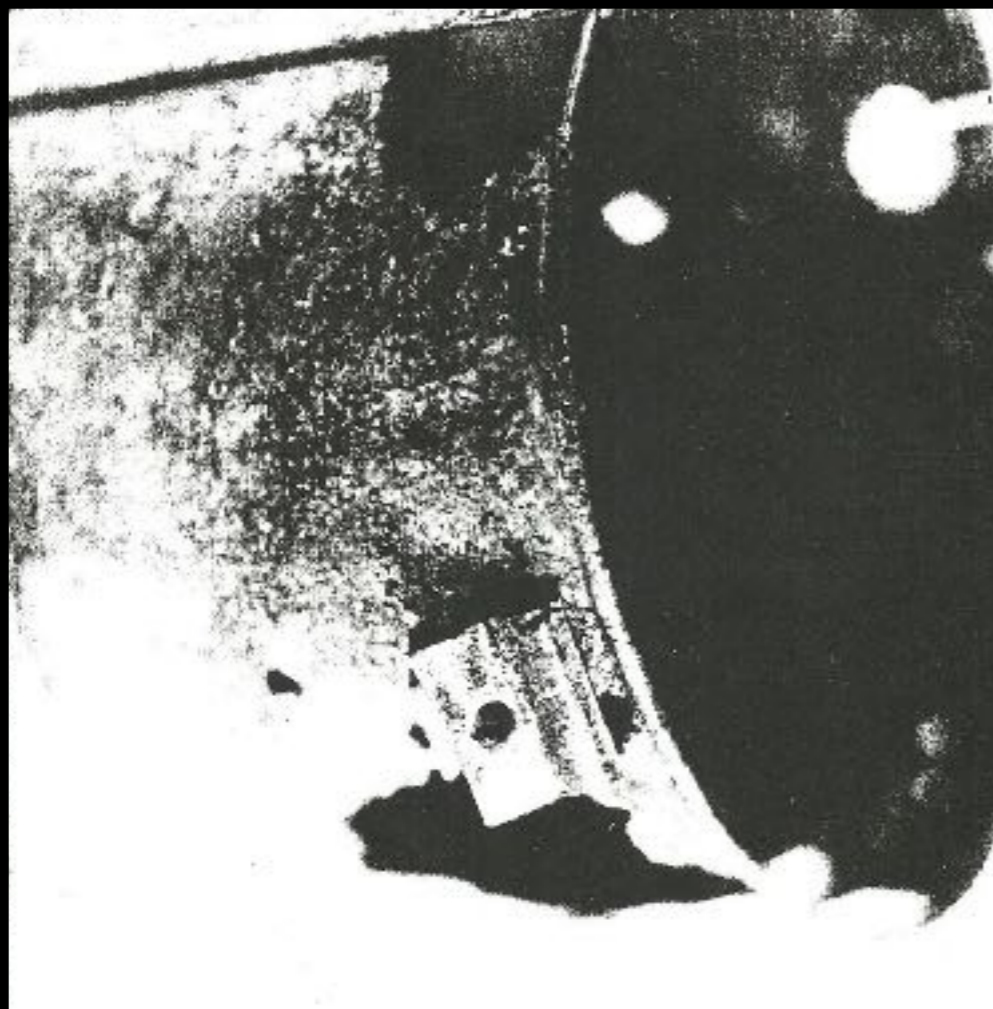
Extant Tin Kettle Recovered at Fort Ticonderoga
Ten Inches in Height
Flat Rectangular Tin Ears Double Riveted to the Kettle Body
(Fort Ticonderoga Collection)



Remnant of a Tin Kettle Excavated at Fort Ligonier
From "A Soldier-Like Way" by R.R. Gale
Heights Excluding Bales and Ears: 9 1/4" and 7 1/4"
(Fort Ligonier Collection)



Tin Kettles or Pails with Flat Rectangular Crimped Dog Ears
Found at Fort Ligonier & Reconstructions of the Same
As Pictured in Neuman and Kravic's "Collector's Encyclopedia of the American Revolution"
Heights Excluding Bales and Ears: 9 1/4" and 7 1/4"
(Fort Ligonier Collection)



Extant Tin Kettle

This Early Specimen was Recovered From a Well at Fortress Louisbourg

Smaller Size : 6" Tall by 8 3/4" Wide

3 Panel Body Construction with Single Riveted Flat Ears for Attaching the Bale

Capacity: 1 Gallon, 1 Pint

c. 1719 - 1768

(Fortress Louisbourg NHS, Parks Canada)



Tin Kettle Lug Remnants from Fortress Louisbourg
Double Riveted, Flat, Crimped, Rectangular Ears of Tin
(Fortress Louisbourg NHS, Parks Canada)



A Crippled Soldier with His Family
c. 1760
(Lewis Walpole Library)



J. Collet pinx.

J. Caldwell sculp.

THE DISBANDED SOLDIER.

So shall Desert in Arms be crown'd,

Printed in the City of London, May 22, 1775, by J. Caldwell, Angel Court, Great Windmill Street, King's Bench Lane.

“THE DEBANDED SOLDIER.”

by J. Caldwell after J. Collet 1775

(Private Collection)



Lidded
Tin Kettle



A Military Encampment in Hyde Park, London
by James Malton after Paul Sandby c.1780 - 1785
(Yale Center for British Art)



“THE ENCAMPMENT AT BLACKHEATH MDCCLXXX”

by Paul Sandby 1780
(The British Museum)



GYPSIES.

"GYPSIES"
by J. Harris, London 1788
(Sulis Fine Art)



"GYPSIES"

by J. Harris, London 1788
(Sulis Fine Art)



A Camp Scene
by Henry William Bunbury c. 1790
(Ann S.K. Brown Library, Brown University)



A Small Post Revolution British Tin Kettle
Round Double Riveted Tin Ears, Iron Bale, and Tin Cover Sporting an Iron Ring Handle
Provenance : 1st Foot Guards c.1800-1810
(Armémuseum, Stockholm Sweden)



A Small Post Revolution British Tin Kettle
Round Double Riveted Tin Ears, Iron Bale, and Tin Cover Sporting an Iron Ring Handle
Provenance : 1st Foot Guards c.1800-1810
(Armémuseum, Stockholm Sweden)



Recreated Tin Kettles Based on the Fortress Louisbourg Artifact
(The Tinsmith Shop at Colonial Williamsburg - Neal Hurst Photograph)



Recreated Tin Kettles
(Impression by Jennifer Wilbur, Photograph Courtesy Jennifer Wilbur)



London Cries: "A Tinker and His Wife"
Paul Sandby c. 1759
(Yale Center for British Art)

Cast Iron Lidded Kettles “Dutch Ovens”

Bake / "Dutch" Ovens

To be Sold by
Joseph Webb
at His Store near Olivers Dock BOSTON

Pot Ash Kettles & covers / Spudding-pans, & basons
Fry kettles for Whaling / Cast Dags, of all sizes
Potts & Kettles of all sizes / Fry-pans & fry Kettles
Skillets of all Sizes / Ox & Horse Cart,
Large & small Spiders / Waggon, & Chaise, Boxes

The advertisement is an ornate engraving on aged paper. At the top, three Union Jack flags are arranged in a decorative banner. The central text, written in a flowing cursive script, identifies the merchant as Joseph Webb and his location as a store near Olivers Dock in Boston. Below the text, a central horizontal shelf holds a variety of kitchenware, including a large Dutch oven, several smaller pots, and a frying pan. This central arrangement is flanked by two tall, highly decorative stands. Each stand features intricate scrollwork and supports a large, heavy-duty Dutch oven on its top platform. The bottom half of the advertisement is a list of goods for sale, organized into two columns. The items include various types of kettles, pans, and basons, as well as whaling equipment, cast iron tools, and heavy-duty carts and waggon. The entire advertisement is framed by decorative flourishes and small illustrations of kitchen items.



American Cast Iron Kettle or Oven with Lid
Cast in Saugus, Massachusetts c. 1648 - 1688
(Saugus Ironworks Museum)



French Cast Iron Kettle / "Marmite" with Lid
Dated 1761
(Museum of the Fur Trade)



Two American Cast Iron Kettles or "Dutch" Ovens with Lids and a Small Iron Kettle
Late 18th - Early 19th Century
(Skinner - The Howard Roth Collection)



A Shallow Cast Iron Lidded Kettle or "Dutch" Oven with Lid
From the Christiana Campbell Tavern Archeology Report, Williamsburg, Virginia
18th Century
(Colonial Williamsburg)



A Shallow Cast Iron Kettle or "Dutch" Oven with Lid
18th Century
(Memorial Hall Museum)



Two American Cast Iron Kettles or "Dutch" Ovens with Lids
Late 18th - Early 19th Century
(Skinner - The Howard Roth Collection)



Cast Iron Kettle or "Dutch" Oven with Lid
Late 18th to Early 19th Century
(Private Collection)



Cast Iron Kettle or "Dutch" Oven with Lid
Late 18th to Early 19th Century
(Private Collection)



Cast Iron Kettle or "Dutch Oven" Missing its Lid
Late 18th to Early 19th Century
(Private Collection)

GEN. THOMAS JOHNSON TO MARYLAND COUNCIL OF SAFETY.

Fredericktown, July 29, 1776.

GENTLEMEN: In conversation with Mr. Ringgold, as he had thought, he told me that General Dent was collecting the Militia below to attack Lord Dunmore. I am apprehensive they will want arms for the purpose, and that a good many of the men, notwithstanding their desire to go on the service, very reluctantly leave their own neighbourhoods, unhappily full of negroes, who might, it is likely on any misfortune to our Militia, become very dangerous. I have spoken with several here, and it seems to be a general sentiment that we ought to assist; and I believe, though our exertions are already as great as we can well make, that for a short expedition on this very interesting occasion, we might now collect a battalion, and borrow the arms which would be wanting. If you, who are acquainted with all circumstances, think it necessary to have men from hence, I shall most gladly execute any orders you may think proper to give for that purpose.

Mr. Ringgold gave me your letter for my brother. The furnace is not now in blast. I went out to him as soon as I got the letter. We have now by us a few pots of about the size you describe, a few kettles, and a few Dutch ovens,

of much the same contents; the covers we could lay by, and of all sorts make up perhaps sixty or upwards. We shall have bails made to them, and (unless you have an opportunity of supplying the men with others more to your satisfaction) send them to *Baltimore* as soon as we can; the prices must depend on their size, and the whole shall be so reasonable as to give satisfaction. But if you can be better provided, please to advise of it. Mr. Butler is getting his furnace into blast with all diligence, and hopes to effect it within a fortnight. You may then have any number of pots and kettles that you please within a short time. We shall also attempt to cast such guns as are wanted, but cannot contract for them in all events, because the metal may not suit, though we have every reason to expect it will. If we succeed in making good guns, the publick may have them delivered at *Baltimore* at £40 a ton, the guns being proved at the works at the publick expense; the swivels at their convenience; but I should be glad if you would ascertain the length, and other descriptions, as the make of cannon carrying the same shot vary very much. If anybody else will contract for a certainty, he should be preferred, even at a greater price.

I am, gentlemen, with great respect, your very obedient servant,

THOMAS JOHNSON.

To the Honourable Council of Safety of *Maryland*.

“American Archives: Consisting of a Collection of Authentick Records, State Papers, Debates, and Letters...”

Edited by Peter Force

The Pennsylvania Journal

8 May, 1776

"Manufactured at Batsto Furnace.

In West-New Jersey, and to be Sold either at the works, or by the Subscriber, in Philadelphia. A Great variety of iron pots, kettles, Dutch ovens, and oval fish kettles, either with or without covers, skillets of different sizes, being much lighter, neater and superior in quality to any imported from Great Britain - Pot ash and other large kettles, from 30 to 125 gallons; sugar-mill gudgeons, neatly rounded and polished at the ends; grating bars of different lengths, grist-mill rounds; weights of all sizes, from 7 lb. to 56 lb.; Fullers plates; open and close stoves of different sizes, rag-wheel irons for saw-mills; pestles and mortars; sash-weights, and forge hammers of the best quality. Also, Batsto Pig iron as usual, the quality of which is too well known to need any recommendation.

John Cox."

Stryker, William S., ed.; "Documents Relating to the Colonial History of the State of New Jersey." Volume I. "Extracts from American Newspapers. Vol. I. 1776-1777." John L. Murphy Publishing Co., Printers. Trenton, New Jersey. 1901

Tin “Dutch Ovens”

During the 18th Century, Tin Reflector Ovens were also known as Tin Kitchens or “Dutch Ovens”. It is imperative that when looking at period accounts this similarity in name for different objects is taken into consideration.



Earthenware Cooking Pots



Les Apprêts d'un déjeuner
by Nicolas-Bernard Lépicié (1735-1784)
(Musée des Beaux-Arts de Rennes)



French Partial Glazed Earthenware Cooking Pots
From the Wreck of the Machault Sunk in the 1760 Battle of Restigouche in the Bay of Gaspé in Quebec Province
c. 1755 - 1760
(Parks Canada)



Dutch Lead Glazed Interior "Grape" Cooking Pot Excavated in the Netherlands
17th Century
(Private Collection)



Dutch Lead Glazed Interior "Grape" Cooking Pot Excavated in the Netherlands
17th Century
(Private Collection)



Dutch Lead Glazed Interior "Grape" Cooking Pot Excavated in the Netherlands
17th Century
(Private Collection)



English Lead Glazed Interior Earthenware Cook Pot or Pipkin

c. 1640 - 1670

(Noël Hume Collection; photo, Gavin Ashworth)



American Lead Glazed Interior Earthenware Cook Pot or Pipkin Found in a South Carolina Privy from Pennsylvania
Made in Philadelphia, Pennsylvania c. 1770 - 1780
(The Charleston Museum, Photo by Sean Money, Source: Robert Hunter)



Robert Hunter

American Lead Glazed Interior Earthenware Cook Pot or Pipkin Found in a Philadelphia, Pennsylvania, Privy
Made in Philadelphia c. 1770 - 1780
(Robert Hunter)



American Lead Glazed Interior Earthenware Cook Pot or Pipkin Found in a Philadelphia, Pennsylvania, Privy
Made in Philadelphia c. 1770 - 1780
(Chris Rowell)



American Lead Glazed Earthenware Cook Pot or Pipkin
Made by and Found in the Kiln of William Richards of Trenton, New Jersey c. 1770 - 1787
(Chipstone)



American Lead Glazed Interior Earthenware Cook Pots or Pipkins from Virginia
Made by Henry Pierce of Alexandria, Virginia c. 1792 - 1796
(Chipstone)



Dutch Lead Glazed Interior Earthenware Pipkin
Excavated at the Edward Rumney / Stephen West Tavern, London Town, Maryland c. 1725
(Chipstone / Photo, Gavin Ashworth)



Robert Hunter

German Weser or Werra Ware Pot Typical to Those Found in Chesapeake Archaeological Sites
Made in the Werra and Weser Regions in the 16th and 17th Centuries 17th Century
(Robert Hunter)

Acknowledgements

The material contained within these slideshows is presented for educational purposes only. The 18th Century Material Culture Resource Center does not personally own any of the items depicted herein and is indebted to the countless museums, libraries, and private collectors who willingly share their collections with the public through the internet. Every attempt has been made to credit these organizations and individuals for their contributions as best as possible.

If there is a question you have regarding a particular item featured within a presentation, please contact the 18th Century Material Culture Resource Center and we will try to answer your inquiry as best as possible. If for any reason you feel there is any item that should not be presented here, or if there is an error in any listing, or if you know the source for any item whose credit is unknown, please inform us and we will make sure your concern is addressed as soon as possible.

Thank you!

- The 18th Century Material Culture Resource Center