

18th Century Material Culture

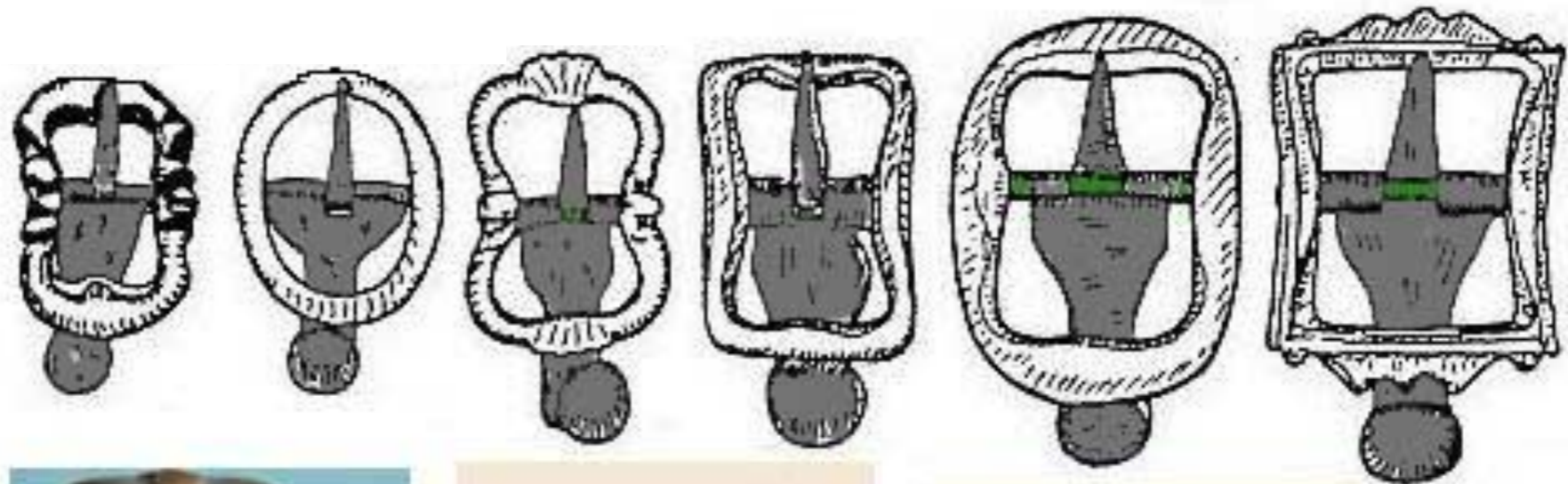
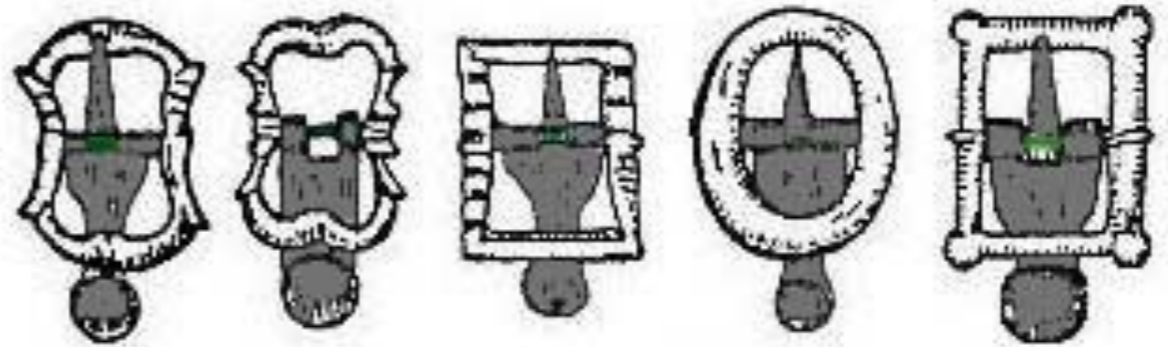
Shoe Buckles



17th Century Shoe Buckles

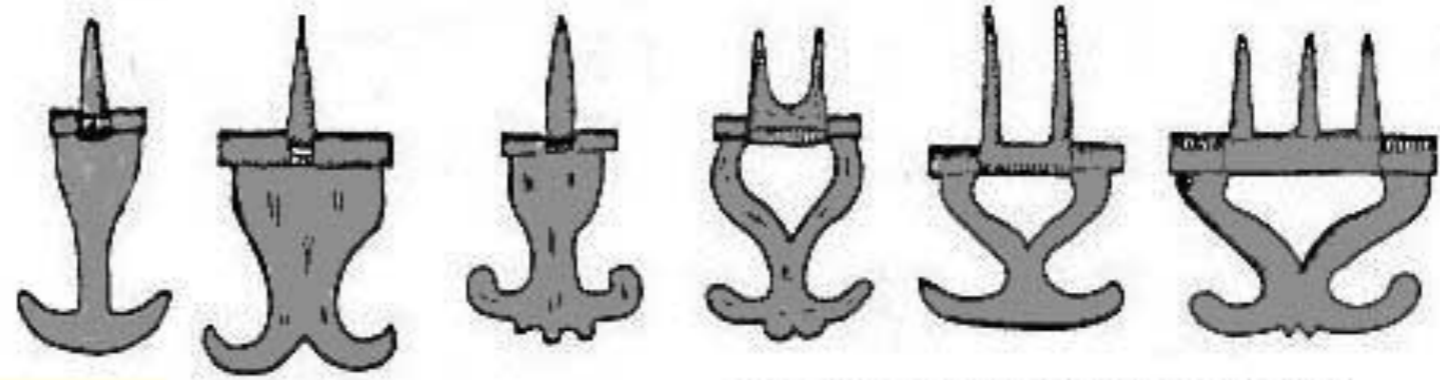
Shoe Buckles

1660-1720 Stud Chapes

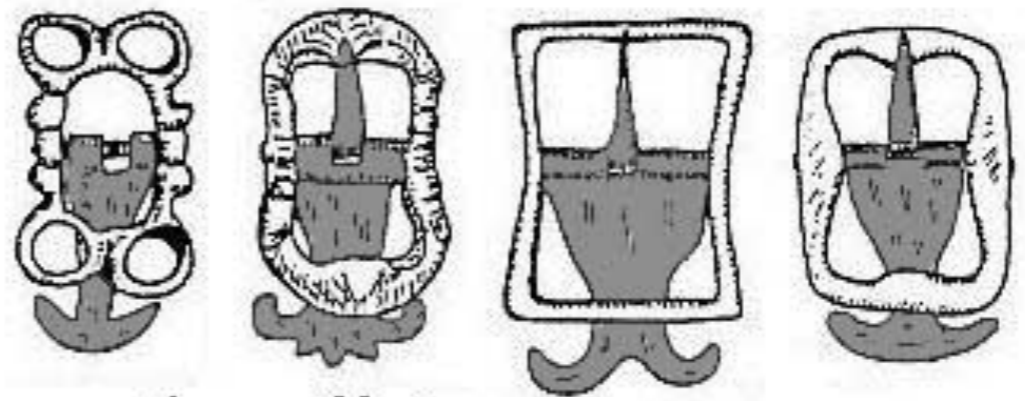


Buckle Types
c. 1660 - 1720
(From: Gentlemen of Fortune)

Anchor Chape
Shoe buckles
1660-1720

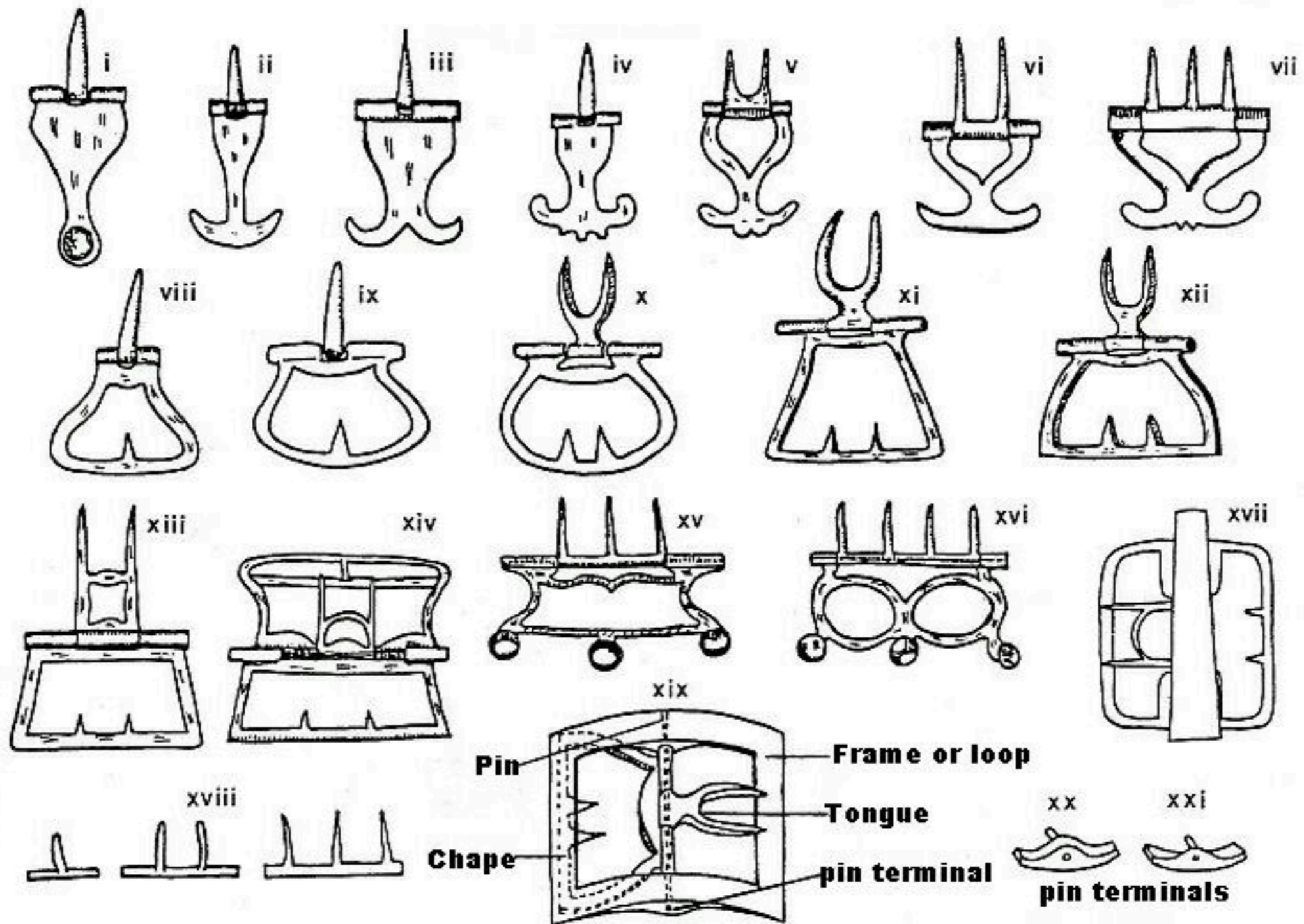


2 and 3 pronged chapes are knee
buckle styles

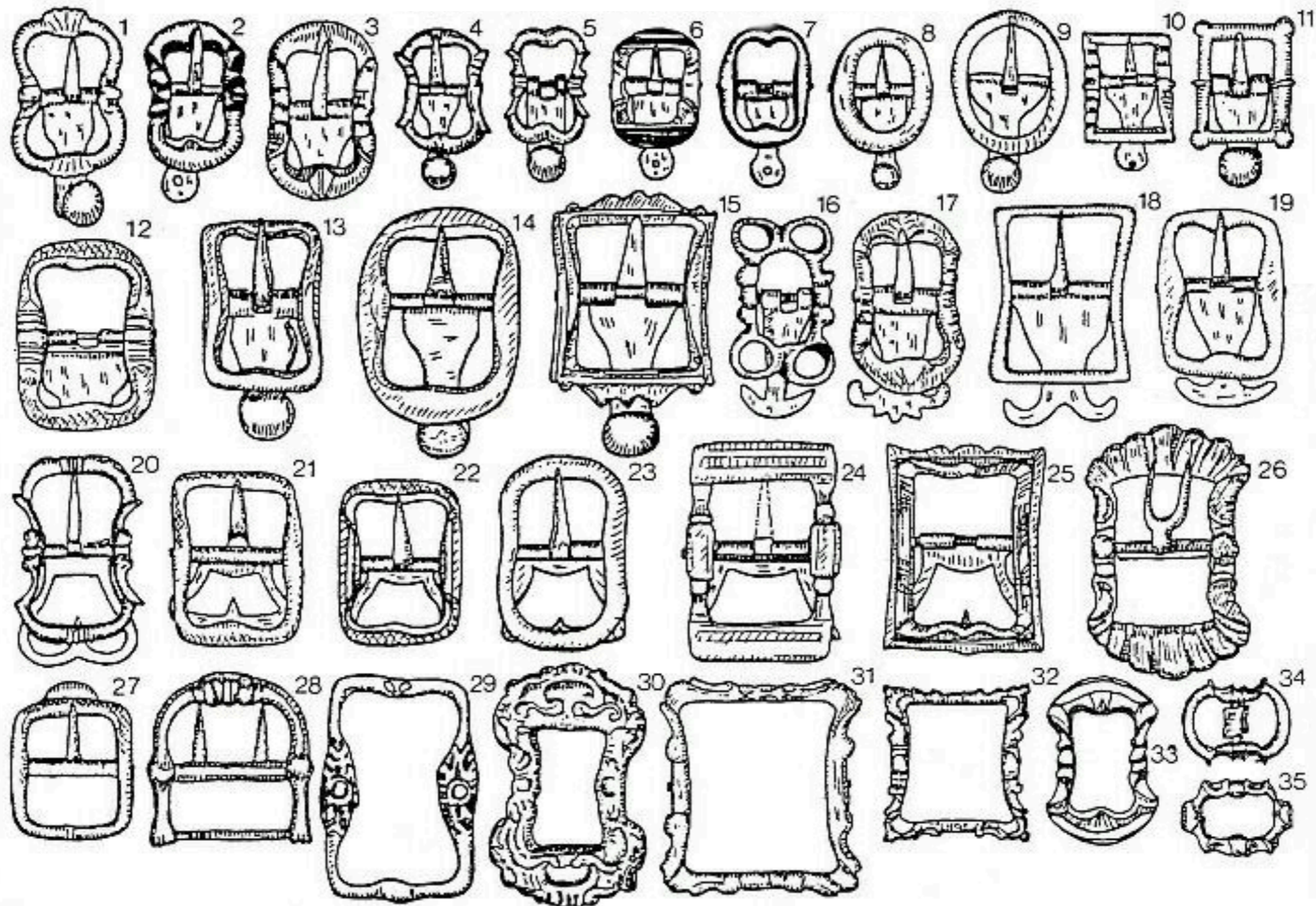




English Silver Utility or Shoe Buckle from Newport / Isle of Wright
Late 17th Century
(UK Detector Finds Database)



Buckle Types
 c. 1660 - 1720
 (NetMarshall)

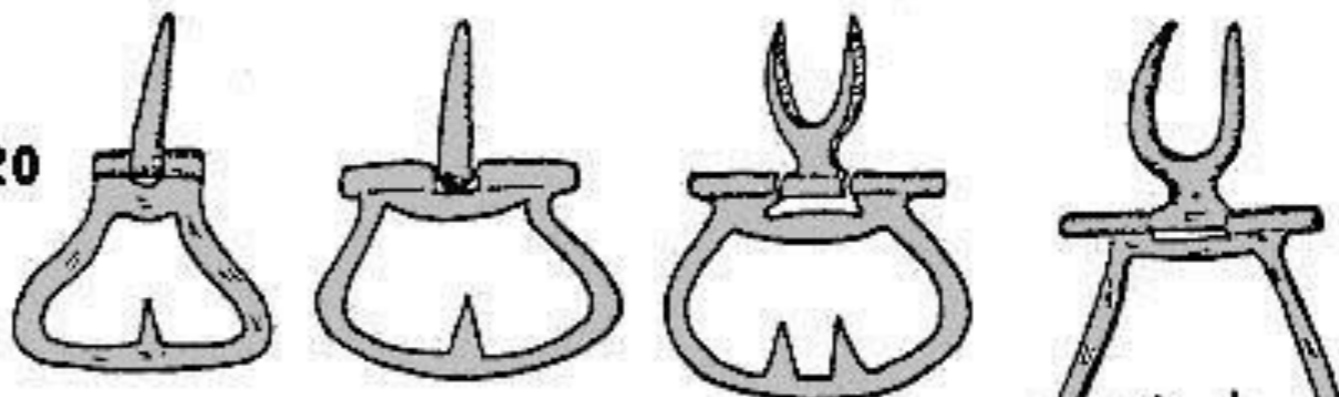


Buckle Types
c. 1660 - 1720
(NetMarshall)

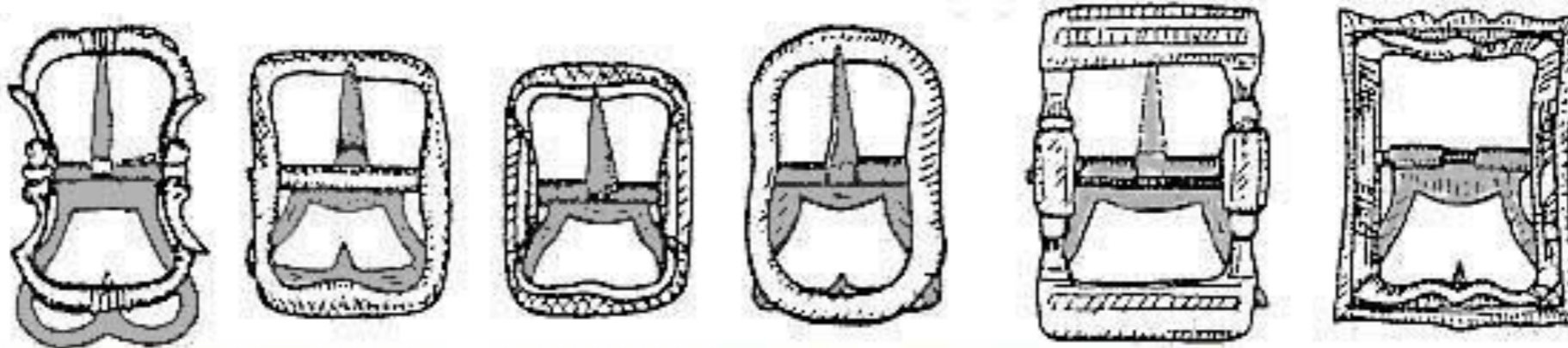
Shoe Buckles

Loop Chapes 1690-1720

loop chapes with single spike and tounge come in around 1690



double spike in use AFTER 1720



Copy of shoe buckle from Spanish Wreck. Grid Paper is 1/4". Latch would be 1/2".

Buckles were smallest around 1660 and progressively got larger. By 1720, they could be 1"



European Enameled Gold Shoe Buckles
c. 1666 - 1699
(Victoria & Albert Museum)

Gold Shoe Buckles

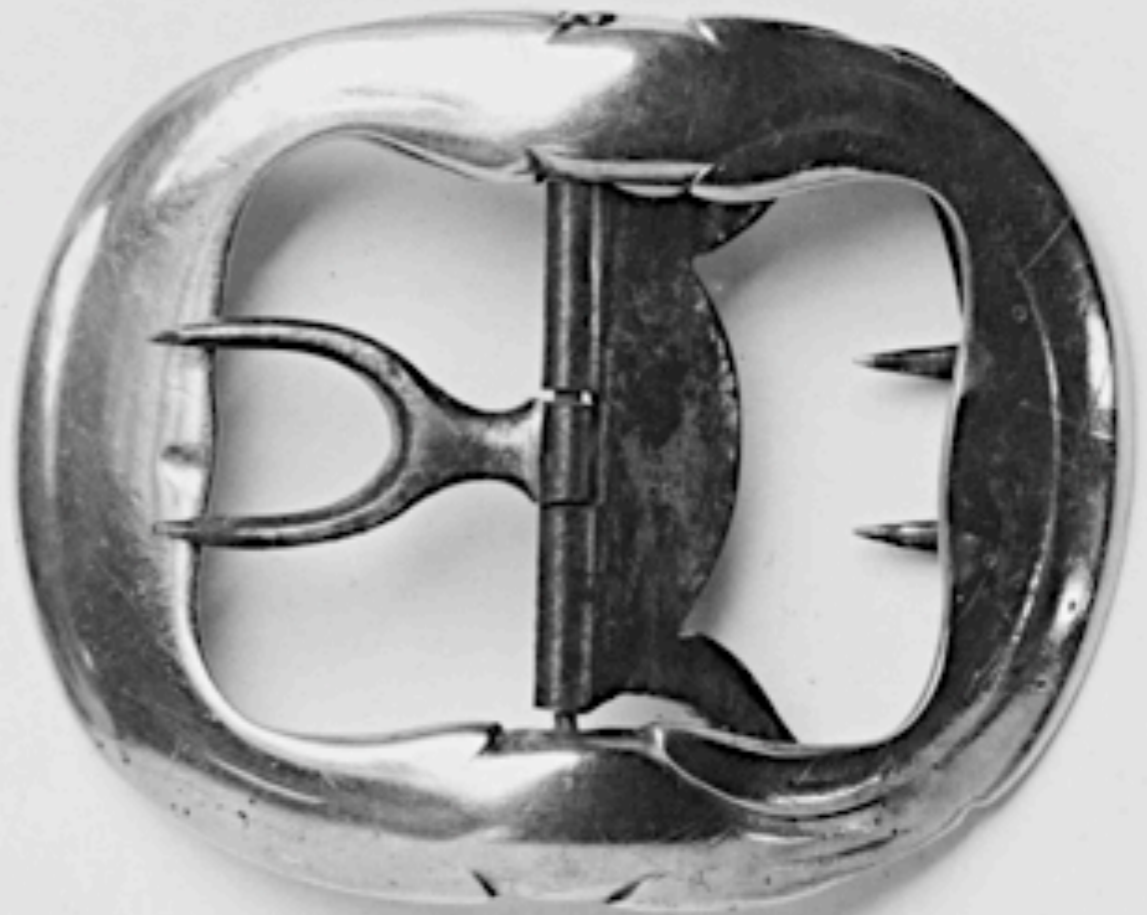
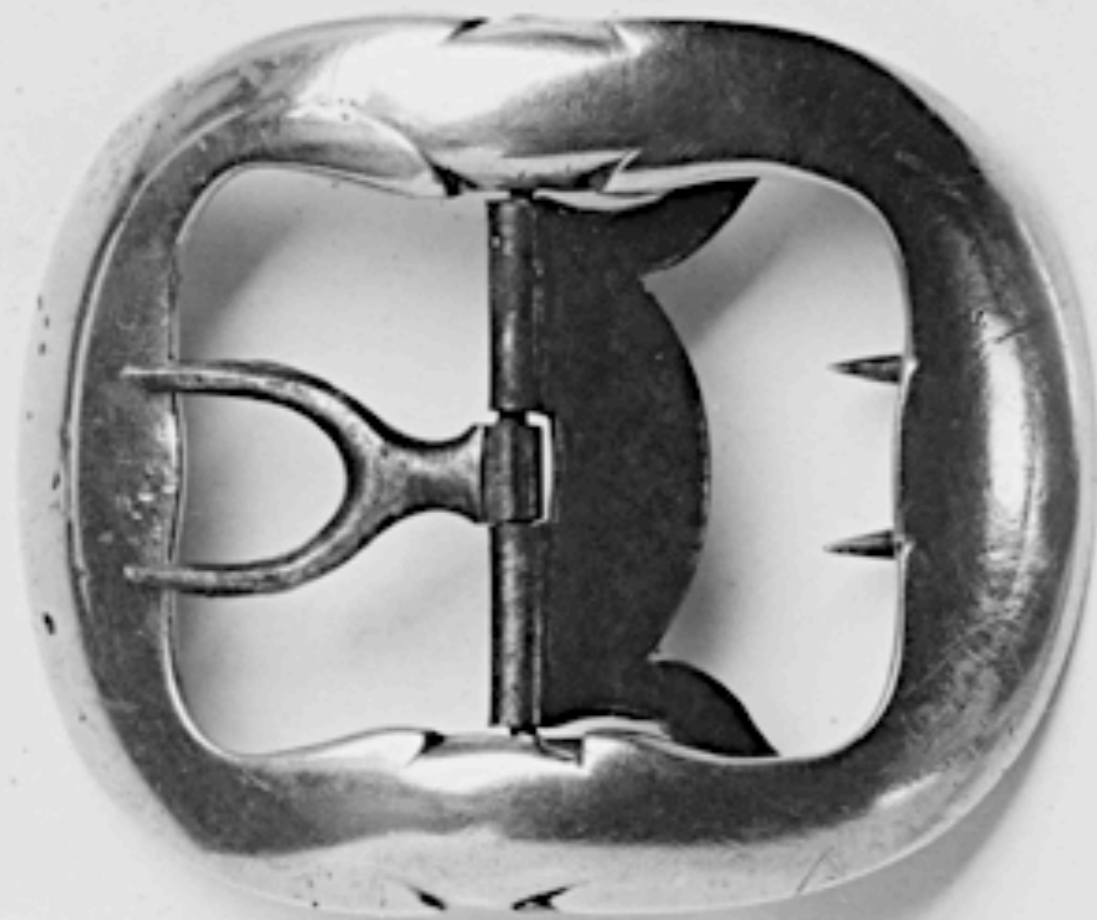


American Gold & Steel Shoe Buckle from Philadelphia
c. 1760 - 1770
(Philadelphia Museum of Art)

Silver Shoe Buckles



Silver & Steel Shoe Buckles
c. 1760 - 1800
(Historic New England)



American Silver Shoe Buckles marked "P D"

c. 1730 - 1775

(Metropolitan Museum of Art)



Silver & Steel Shoe Buckles
Mid - Late 18th Century
(LACMA)



English Silver & Steel Shoe Buckles
c. 1760 - 1785
(Metropolitan Museum of Art)



American Silver & Brass Shoe Buckles
c. 1770 - 1800
(Historic New England)



English or American Silver & Steel Shoe Buckles
18th Century
(Private Collection)



American Silver Shoe Buckles from Boston, Massachusetts
by Zachariah Brigden c. 1770 - 1787
(Metropolitan Museum of Art)



American Silver & Steel Shoe Buckles Likely from Boston, Massachusetts
Mid 18th Century
(Museum of Fine Arts, Boston)



American Silver & Steel Shoe Buckles from Philadelphia
by Philip Syng, Jr. c. 1783 - 1785
(Philadelphia Museum of Art)



American Silver & Steel Shoe Buckles from Philadelphia
by Philip Syng, Jr. c. 1783 - 1785
(Philadelphia Museum of Art)



American Silver & Steel Shoe Buckle from Philadelphia
by Richard Humphreys c. 1774 - 1780
(Philadelphia Museum of Art)



American Silver & Steel Shoe Buckle from Philadelphia
by Richard Humphreys c. 1774 - 1780
(Philadelphia Museum of Art)



*American Silver & Steel Shoe Buckle from Philadelphia
by William Mannerback c. 1785 - 1790
(Philadelphia Museum of Art)*



American Silver Shoe Buckles from Philadelphia
by Joseph and Nathaniel Richardson c. 1780 - 1790
(Philadelphia Museum of Art)



American Silver & Steel Shoe Buckles from Philadelphia
c. 1780 - 1790
(Philadelphia Museum of Art)



American Silver & Steel Shoe Buckles
18th Century
(Philadelphia Museum of Art)



American Silver Shoe Buckles from Philadelphia
by Joseph and Nathaniel Richardson c. 1780 - 1790
(Philadelphia Museum of Art)



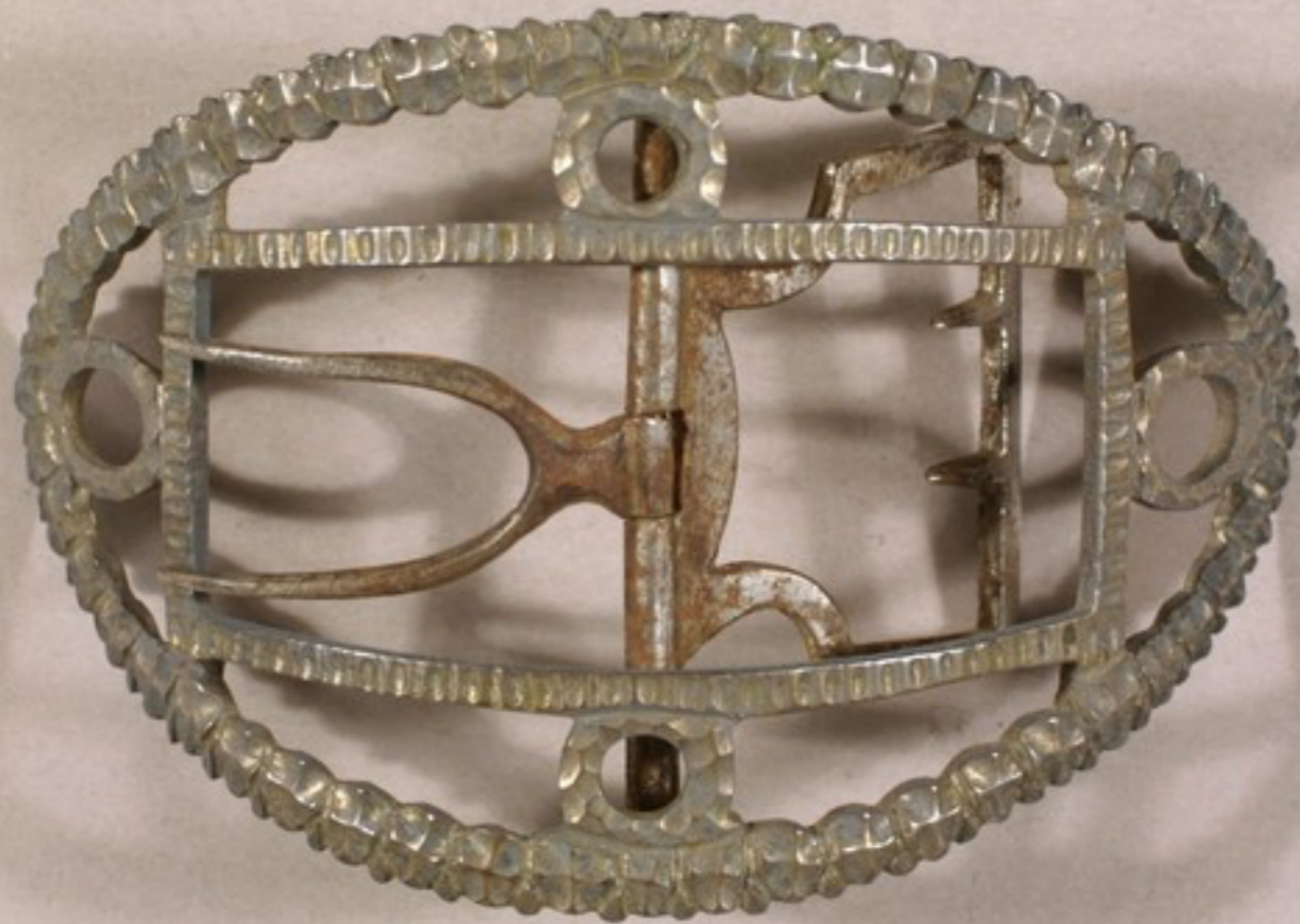
English Silver Shoe Buckles
by John Faux c. 1773
(Philadelphia Museum of Art)



Silver & Steel Shoe Buckles
Mid - Late 18th Century
(Cooper Hewitt)



French Silver & Steel Shoe Buckles
18th Century
(Theberge Collection)



American Silver & Steel Shoe Buckle
c. 1770 - 1790
(Historic New England)



English Silver & Steel Shoe Buckle from Birmingham

c. 1780

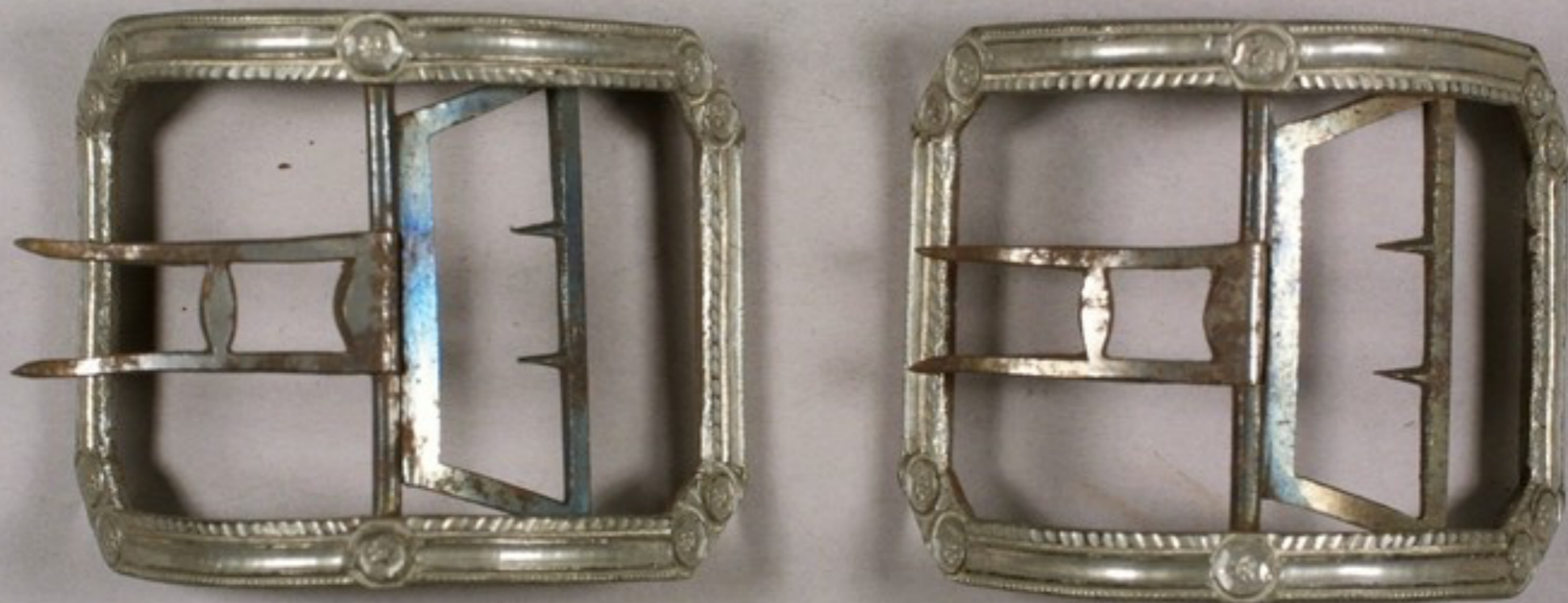
(Victoria & Albert Museum)



English Silver & Steel Shoe Buckle
c. 1770 - 1784
(Victoria & Albert Museum)



English Silver & Steel Shoe Buckle
c. Late 18th Century
(Victoria & Albert Museum)



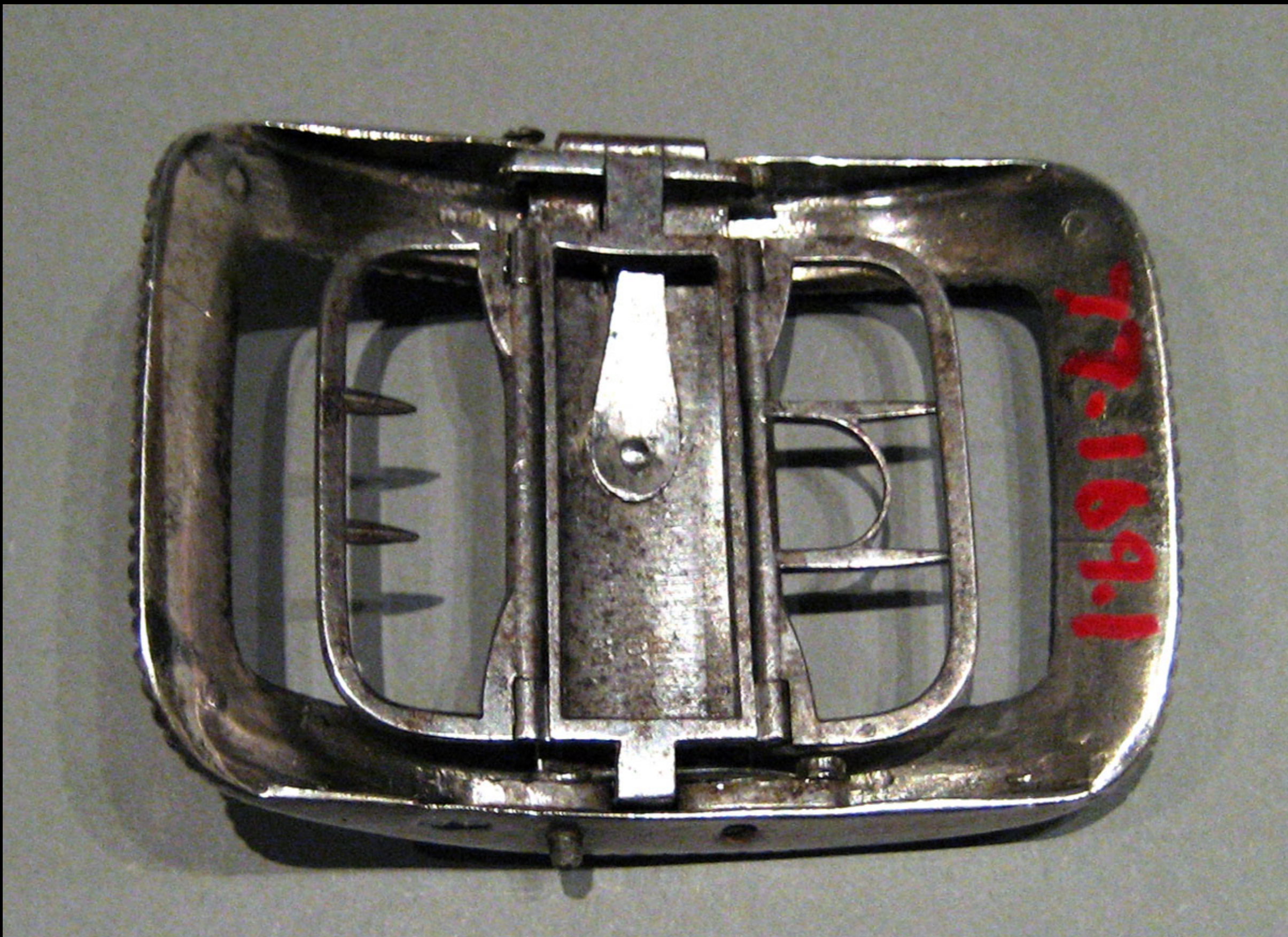
English or American Silver & Steel Shoe Buckles
c. 1775 - 1800
(Historic New England)



American Silver & Steel Shoe Buckles from New York
by Adrian Bancker c. 1723 - 1770
(Winterthur)



American Silver & Steel Shoe Buckles from New York
by Adrian Bancker c. 1723 - 1770
(Winterthur)



American Silver & Steel Shoe Buckles from New York
by Adrian Bancker c. 1723 - 1770
(Winterthur)



English Silver & Steel Shoe Buckles
18th Century
(Philadelphia Museum of Art)



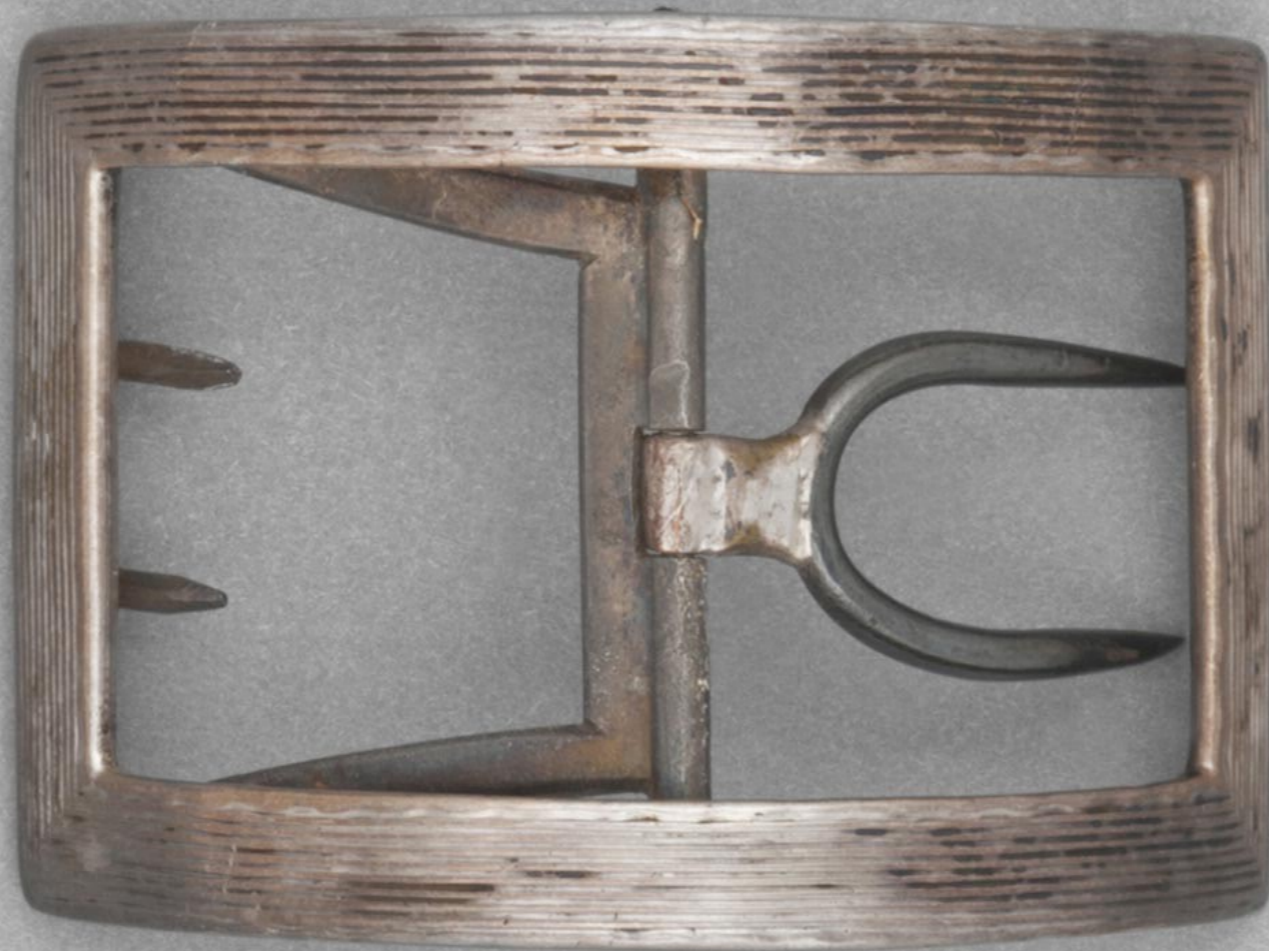
English Silver & Steel Shoe Buckles
c. 1770 - 1790
(Metropolitan Museum of Art)



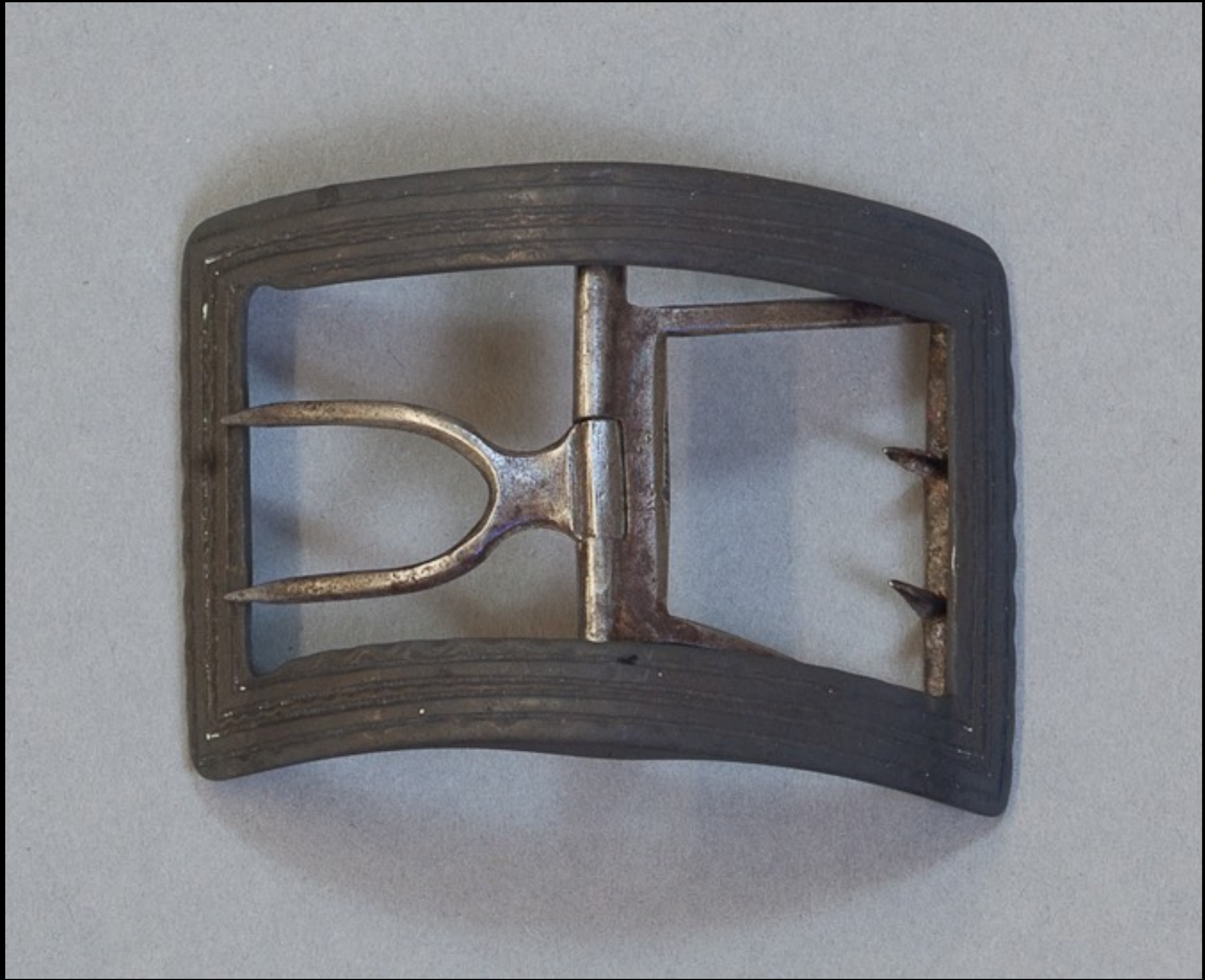
Silver & Steel Shoe Buckles
Late 18th Century
(Cooper Hewitt)



American Silver Shoe Buckle
c. 1770 - 1780
(Metropolitan Museum of Art)



American Silver & Steel Shoe Buckle
18th Century
(Philadelphia Museum of Art)



“Silver” (Pewter???) & Steel Shoe Buckle
18th Century
(Five Colleges and Historic Deerfield Museum Consortium)



American Silver Shoe Buckles
c. 1770 - 1800
(Historic New England)



American Silver & Steel Shoe Buckles
18th Century
(Philadelphia Museum of Art)



American Black Enameled Silver & Steel Mourning Shoe Buckles
Late 18th Century
(LACMA)



American Silver & Steel Shoe Buckles
18th Century
(Philadelphia Museum of Art)



American Silver & Steel Shoe Buckle
18th Century
(Five Colleges and Historic Deerfield Museum Consortium)



American Silver & Steel Shoe Buckle
18th Century
(Philadelphia Museum of Art)



American Silver & Steel Shoe Buckle from Philadelphia
by Peter David c. 1740 - 1755
(Philadelphia Museum of Art)



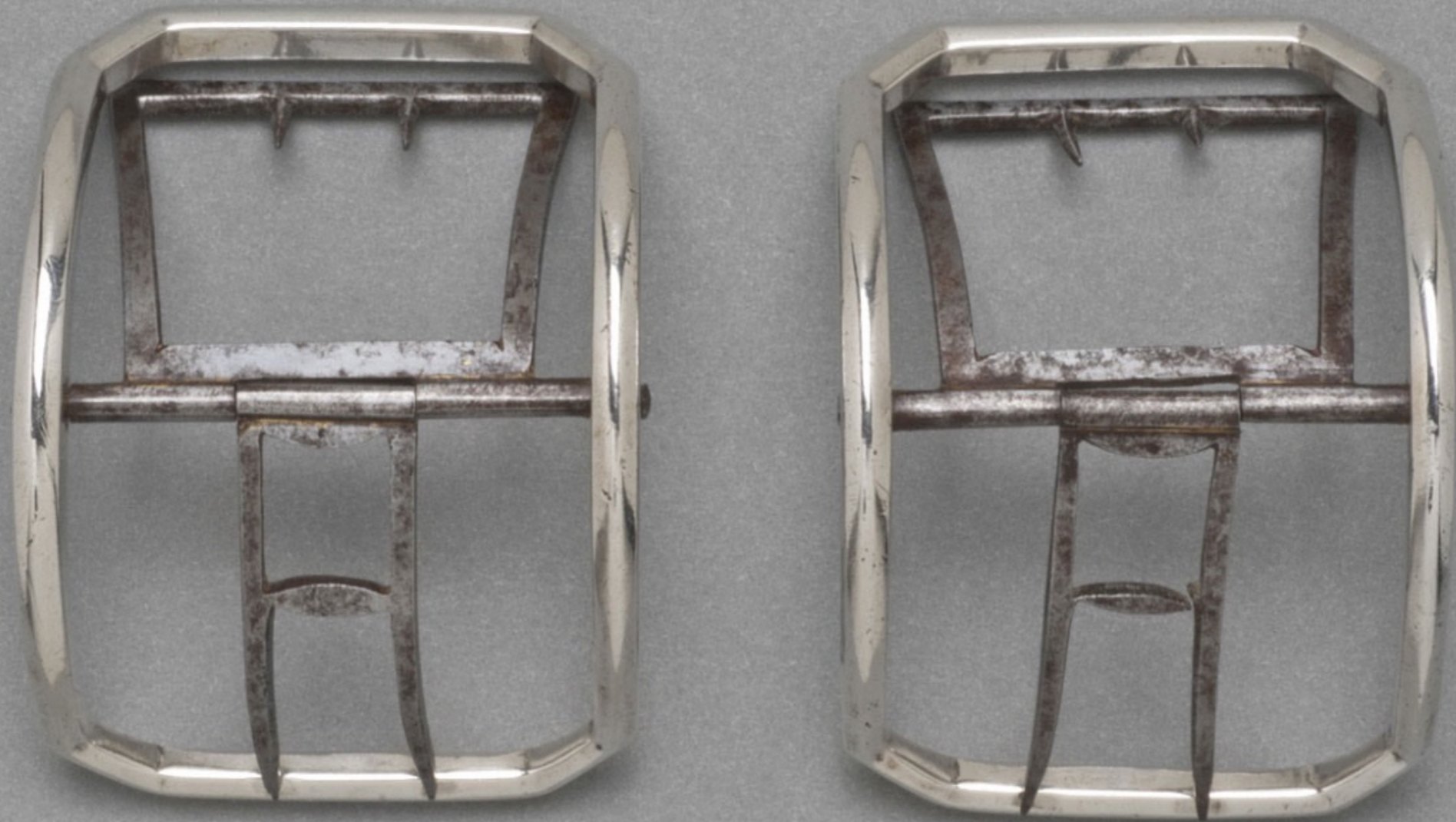
American Silver & Steel Shoe Buckle from Philadelphia
by Peter David c. 1740 - 1755
(Philadelphia Museum of Art)



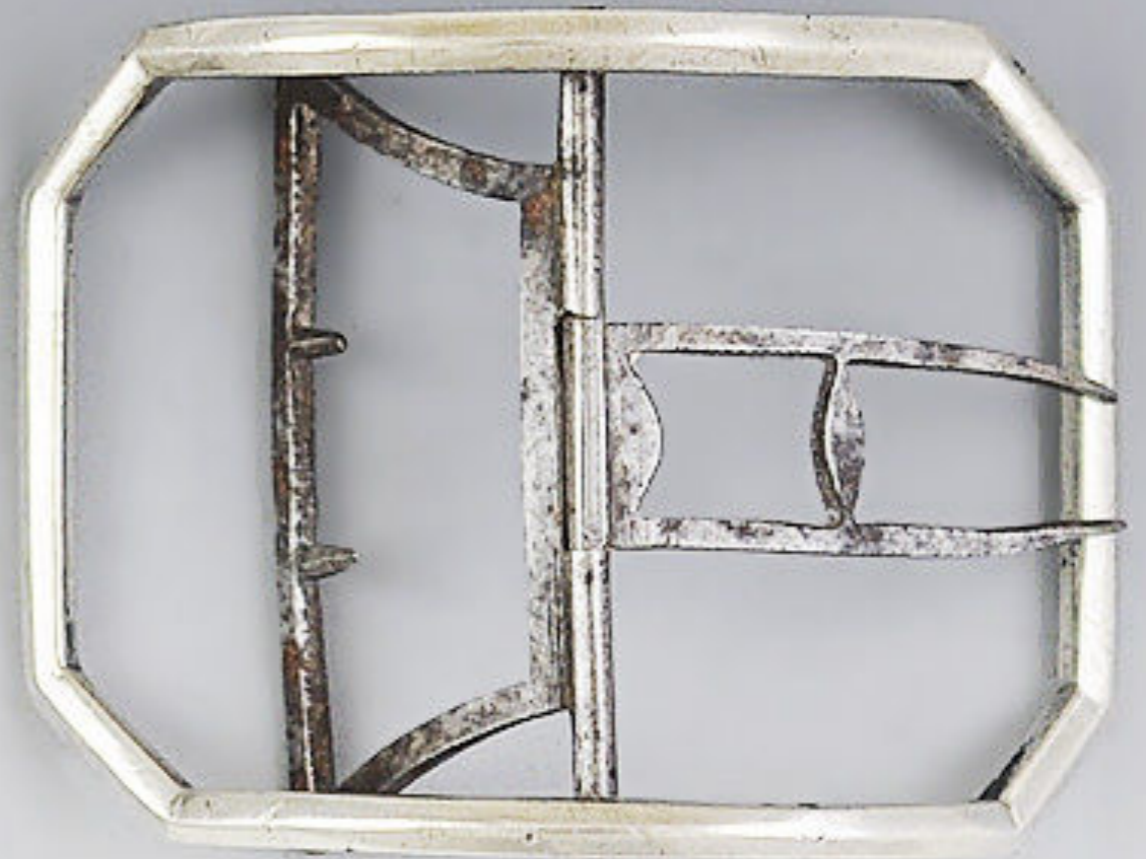
French Silver & Steel Shoe Buckle from Paris
by Claude H-N Souchet 18th Century
(Winterthur)



French Silver & Steel Shoe Buckle from Paris
by Claude H-N Souchet 18th Century
(Winterthur)



American Silver & Steel Shoe Buckles from Philadelphia
by Joseph Shoemaker c. 1780 - 1810
(Philadelphia Museum of Art)



ET

Silver & Steel Shoe & Knee Buckles
c. 1750 - 1790
(Antiques by Bubbleking)



Silver & Steel Shoe Buckles
c. 1790 - 1800
(Museum of Fine Arts, Boston)



English Silver & Steel Shoe Buckles
c. 1770 - 1780
(Metropolitan Museum of Art)

Jeweled Shoe Buckles



English Silver, Steel, Diamond & Sapphire Shoe Buckles

c. 1750

(Victoria & Albert Museum)

Paste Shoe Buckles



Silver, Steel & Paste Shoe Buckle
18th Century
(Five Colleges and Historic Deerfield Museum Consortium)



English Steel & Paste Shoe Buckles
c. 1775 - 1790
(Historic New England)



Silver, Steel & Paste Shoe Buckles
c. 1780 - 1800
(Historic New England)



English "Metal" & Paste Shoe Buckle
Late 18th Century
(Metropolitan Museum of Art)



“Metal” & Paste Shoe Buckle
Late 18th Century
(Private Collection)



English Silver, Steel & Paste Shoe Buckles

c. 1770

(Museum of Fine Arts, Boston)



French Paste Shoe Buckles Given by Benjamin Franklin to His Daughter, Sally

c. 1755 - 1765

(New York Historical Society)



Silver & Paste Shoe Buckles



American Silver, Steel & Paste Shoe Buckles
18th Century
(Philadelphia Museum of Art)



English Silver, Steel & Paste Shoe Buckles
c. 1770 - 1800
(Historic New England)



English Silver, Steel & Paste Shoe Buckles in a Shagreen Box
c. 1760 - 1800
(Historic New England)



Silver, Steel & Paste Shoe Buckles
c. 1760 - 1800
(Historic New England)



American Silver, Steel & Paste Shoe Buckles
Late 18th Century
(Philadelphia Museum of Art)



English Silver, Steel & Paste Shoe Buckles Made in London
by James Sutton, Active until 1793, and James Bult 1783
(Philadelphia Museum of Art)



American Silver, Steel & Paste Shoe Buckle

c. 1790

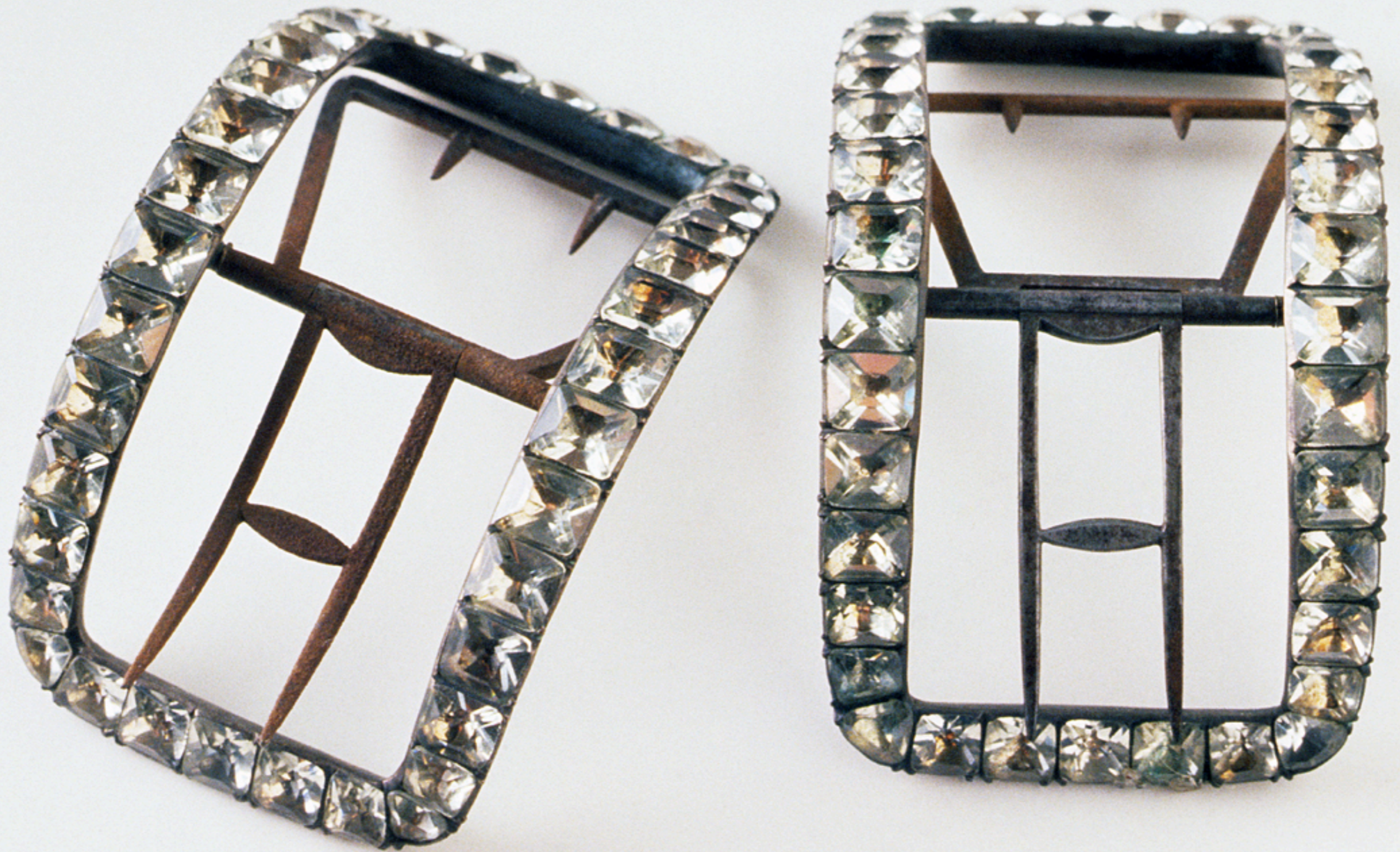
(Museum of Fine Arts, Boston)



“Metal” & Paste Shoe Buckle
Late 18th Century
(Private Collection)



Silver, Steel & Paste Shoe Buckles
c. 1760 - 1800
(Historic New England)



Silverplate on Copper, Steel & Paste Shoe Buckle

c. 1775 - 1810

(Winterthur)



Silverplate on Copper, Steel & Paste Shoe Buckle

c. 1775 - 1810

(Winterthur)



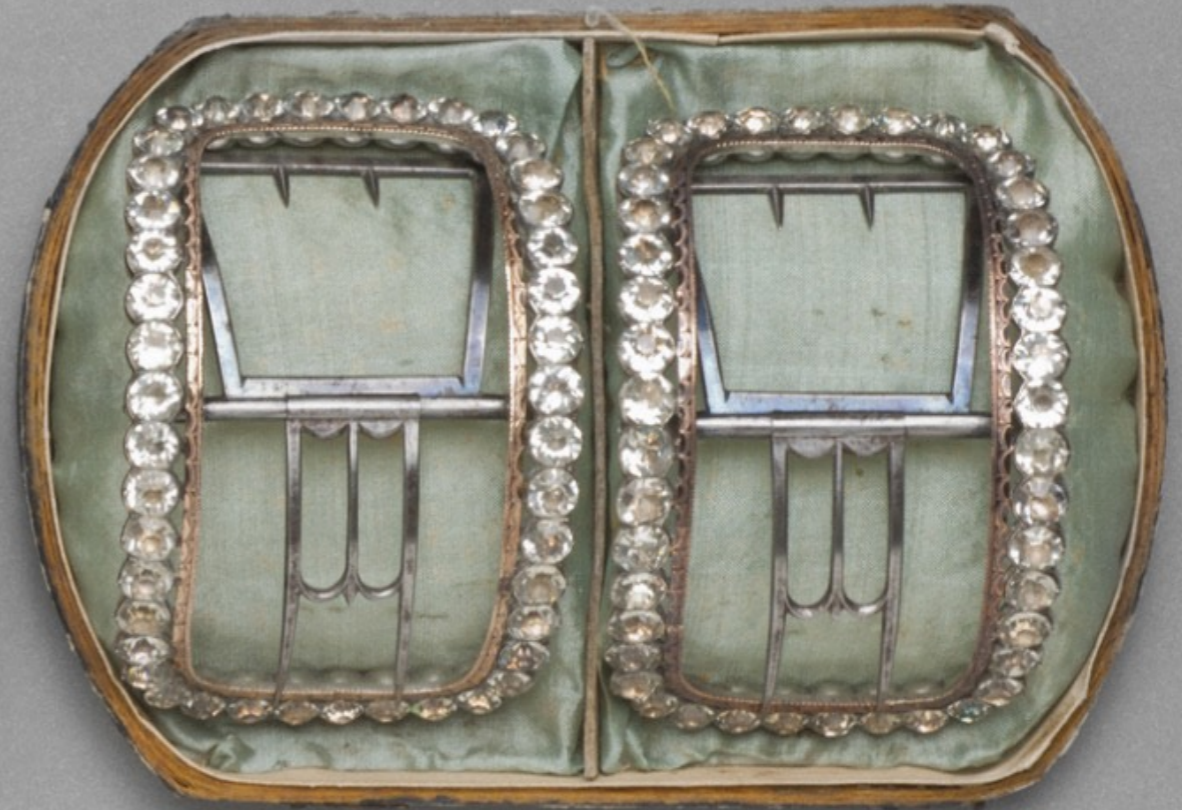
English Silver, Copper & Paste Shoe Buckles in a Black Shagreen Box
c. 1740 - 1780
(Historic New England)



English Silver, Steel & Paste Shoe Buckles in a Shagreen Box
c. 1770 - 1800
(Historic New England)



American Silver, Steel & Paste Shoe Buckles from Philadelphia
by Joseph Anthony, Jr. c. 1783 - 1790
(Philadelphia Museum of Art)



American Silver, Steel & Paste Shoe Buckles from Philadelphia
by Joseph Anthony, Jr. c. 1783 - 1790
(Philadelphia Museum of Art)



English Silver, Steel & Paste Shoe Buckles

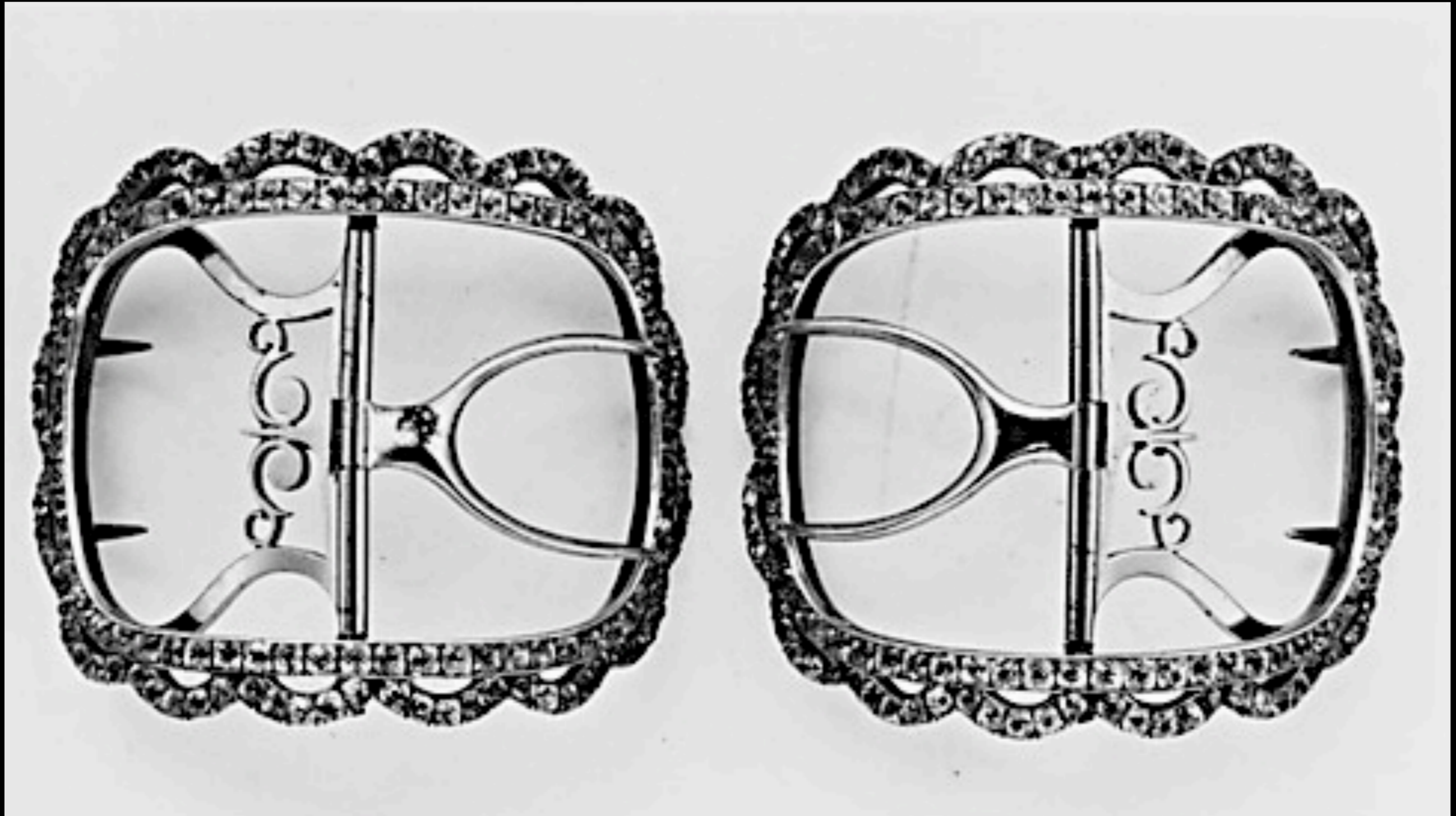
Worn by Prudence Jenkins of Providence, Rhode Island on Her Wedding to Dr. John Chace, 12 December, 1770
(Historic New England)



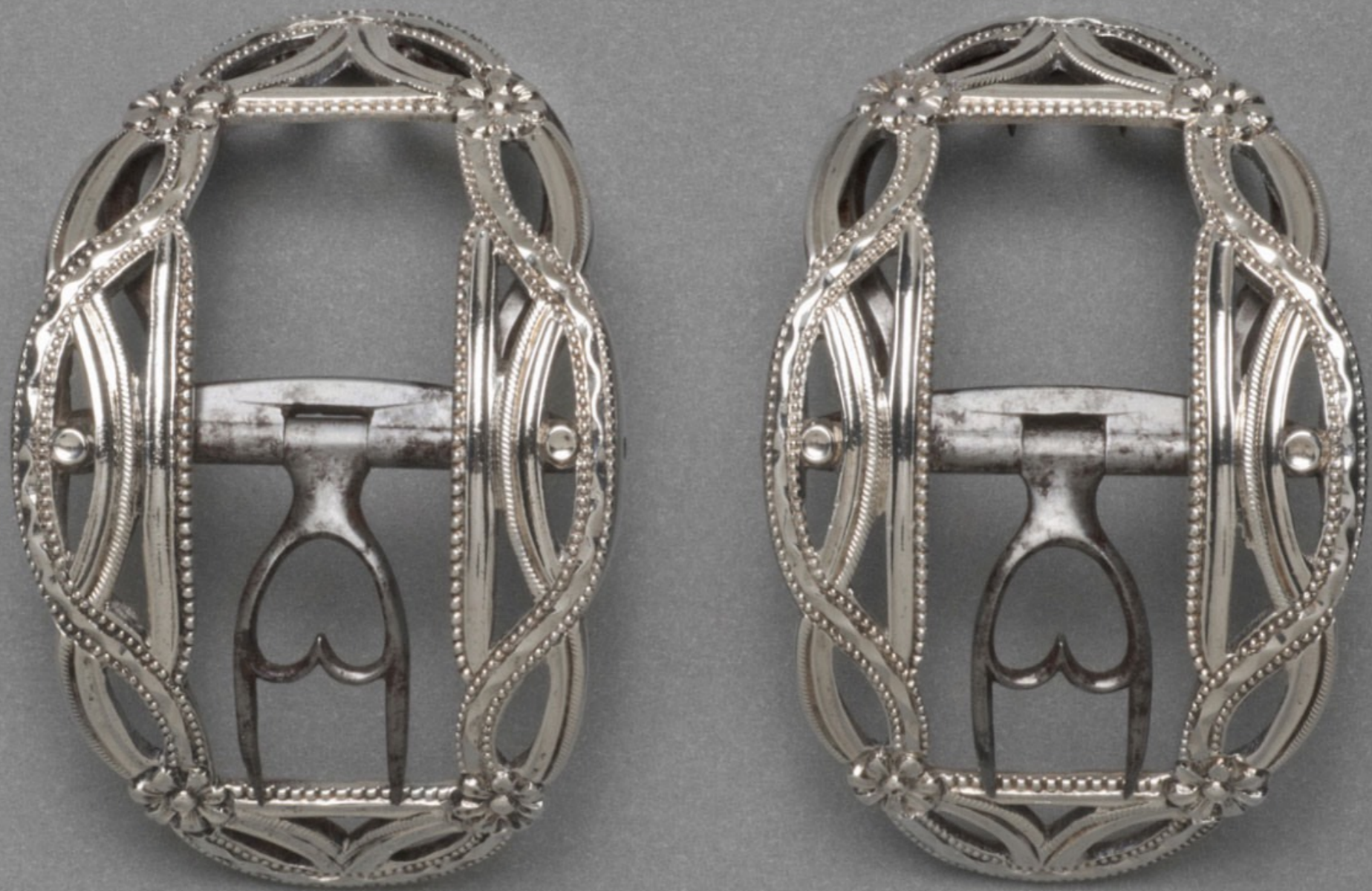
English Silver & Paste Shoe Buckle

c. 1770

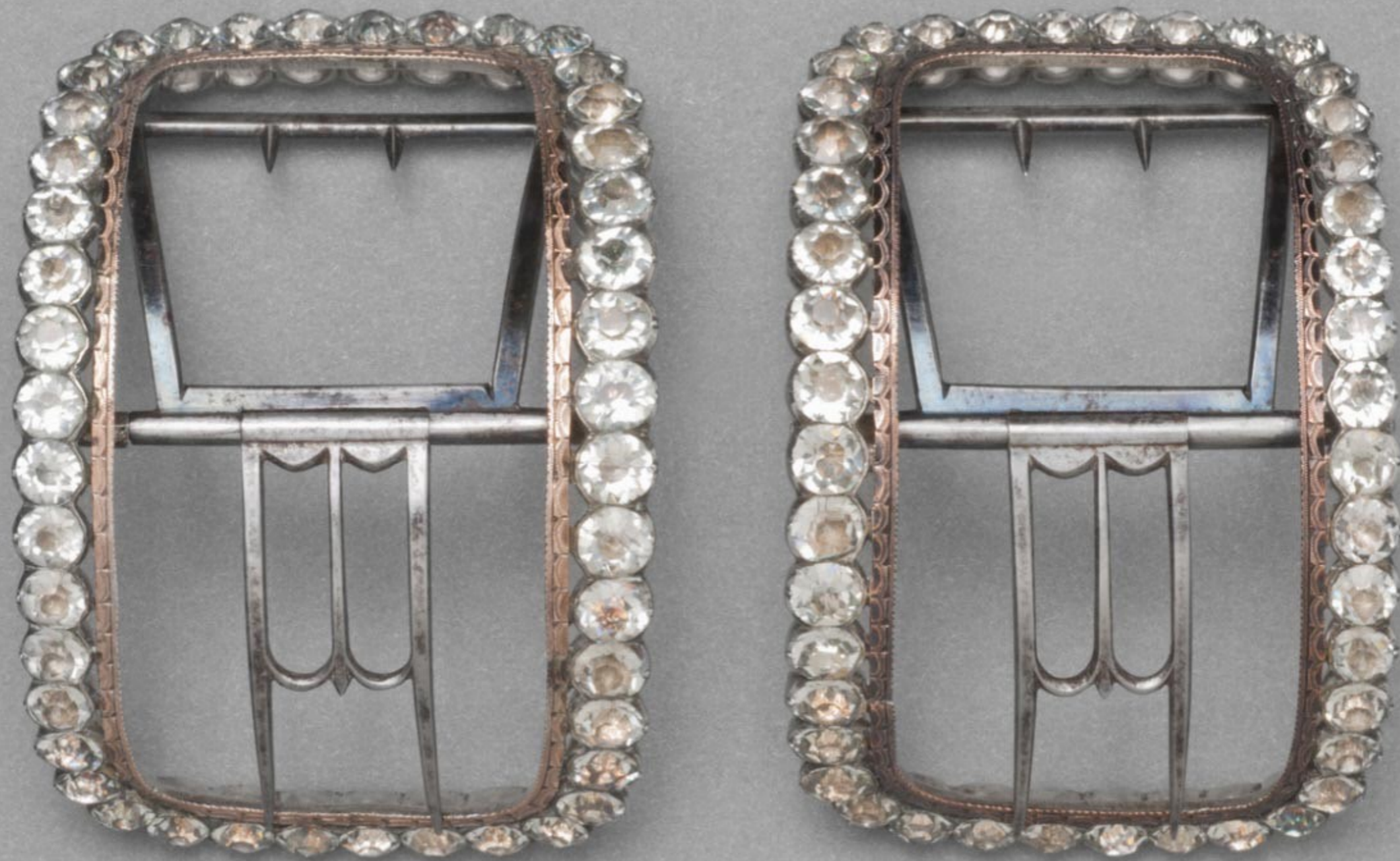
(Victoria & Albert Museum)



English or American Silver & Paste Shoe Buckles
c. 1750 - 1775
(Metropolitan Museum of Art)



English Silver, Steel & Paste Shoe Buckles Made in London
by James Sutton, Active until 1793, and James Bult 1783
(Philadelphia Museum of Art)



American Silver, Steel & Paste Shoe Buckles from Philadelphia
by Joseph Anthony, Jr. c. 1783 - 1790
(Philadelphia Museum of Art)



Silver, Steel & Paste Shoe Buckles
c. 1770 - 1800
(Historic New England)



English Silver, Copper & Paste Shoe Buckles in a Black Shagreen Box
c. 1740 - 1780
(Historic New England)



American Silver, Steel & Paste Shoe Buckle Worn by John Warren, M.D., of Boston, Massachusetts

c. 1750 - 1799

(Museum of Fine Arts, Boston)



English Silver & Paste Shoe Buckles

c. 1780 - 1785

(LACMA)



American Silver, Steel & Paste Shoe Buckles from Philadelphia
c. 1790
(Philadelphia Museum of Art)



English Enameled Silver, Steel & Paste Shoe Buckles
c. 1780
(Peter Cameron Antique Silver)



English Enameled Silver, Steel & Paste Shoe Buckles
c. 1780
(Peter Cameron Antique Silver)



“Metal” & Paste Shoe Buckle
Late 18th Century
(Private Collection)



English Silver & Paste Shoe Buckle

c. 1770

(Victoria & Albert Museum)



English Silver & Paste Shoe Buckle
c. 1780
(Victoria & Albert Museum)



American Silver, Steel & Paste Shoe Buckle

c. 1760 - 1770

(Museum of Fine Arts, Boston)



English Silver, Steel & Paste Shoe Buckle
c. 1760
(Victoria & Albert Museum)



English Silver, Steel, Paste & Marasites Shoe Buckle

c. 1770

(Victoria & Albert Museum)



White Metal, Steel & Paste Shoe Buckles
18th Century
(Private Collection)



American White Metal, Steel & Paste Shoe Buckles
c. 1760 - 1785
(Philadelphia Museum of Art)



Silver, Steel & Paste Shoe Buckles
Mid - Late 18th Century
(Cooper Hewitt)



Silver, Steel & Paste Shoe Buckles
Mid - Late 18th Century
(Cooper Hewitt)



European Silver, Steel & Paste Shoe Buckle

c. 1770

(Victoria & Albert Museum)



English Silver, Steel & Paste Shoe Buckle
c. 1760
(Victoria & Albert Museum)



English or French Silver, Steel & Paste Shoe Buckles
c. 1740 - 1760
(Five Colleges and Historic Deerfield Museum Consortium)

Brass & Copper Shoe Buckles



English Shoe Buckle Found in the River Thames, London
Early 18th Century
(London Mudlark)



Brass Shoe Buckle
c. 1750 - 1800
(Historic New England)



Silver on Brass or Copper Shoe Buckle
18th Century
(Five Colleges and Historic Deerfield Museum Consortium)



Shoe Buckle & Shoe Top Quarters Found in the River Thames, London

c. 1775 - 1800

(London Mudlark)



Shoe Buckle & Shoe Top Quarters Found in the River Thames, London

c. 1775 - 1800

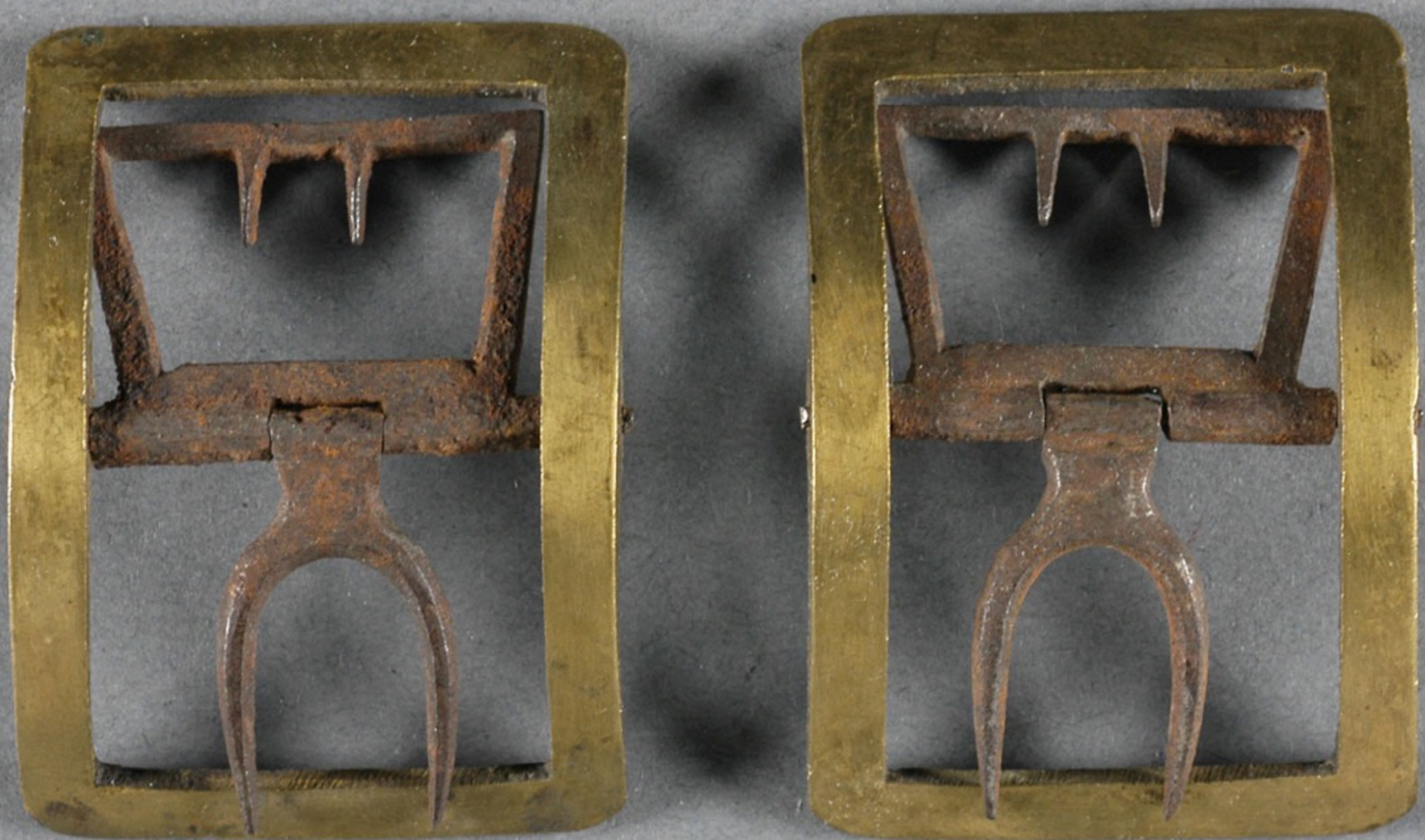
(London Mudlark)



English Black Japanned Brass & Steel Mourning Buckle
Made to Commemorate the Death of Queen Caroline, Consort of George I 1737
(Victoria & Albert Museum)



American Brass & Steel Shoe Buckles
Early 18th Century
(Philadelphia Museum of Art)



American Brass & Steel Shoe Buckles
Late 18th Century
(Philadelphia Museum of Art)



Brass Shoe Buckle
c. 1750 - 1800
(Historic New England)



Brass Shoe Buckle
c. 1750 - 1800
(Historic New England)



Brass Shoe Buckle
c. 1750 - 1800
(Historic New England)



Brass & Steel Shoe Buckles
by "PARKES'S" c. 1750 - 1800
(Historic New England)



American Brass & Steel Shoe Buckle
18th Century
(Philadelphia Museum of Art)



American Silver Faced Brass & Steel Shoe Buckle
18th Century
(Philadelphia Museum of Art)



English Stamped Gold on Brass and Steel Shoe Buckle

c. 1777 - 1780

(Victoria & Albert Museum)



Brass & Steel Shoe Buckles
c. 1760 - 1800
(Historic New England)



Brass & Steel Shoe Buckles
c. 1770 - 1800
(Historic New England)



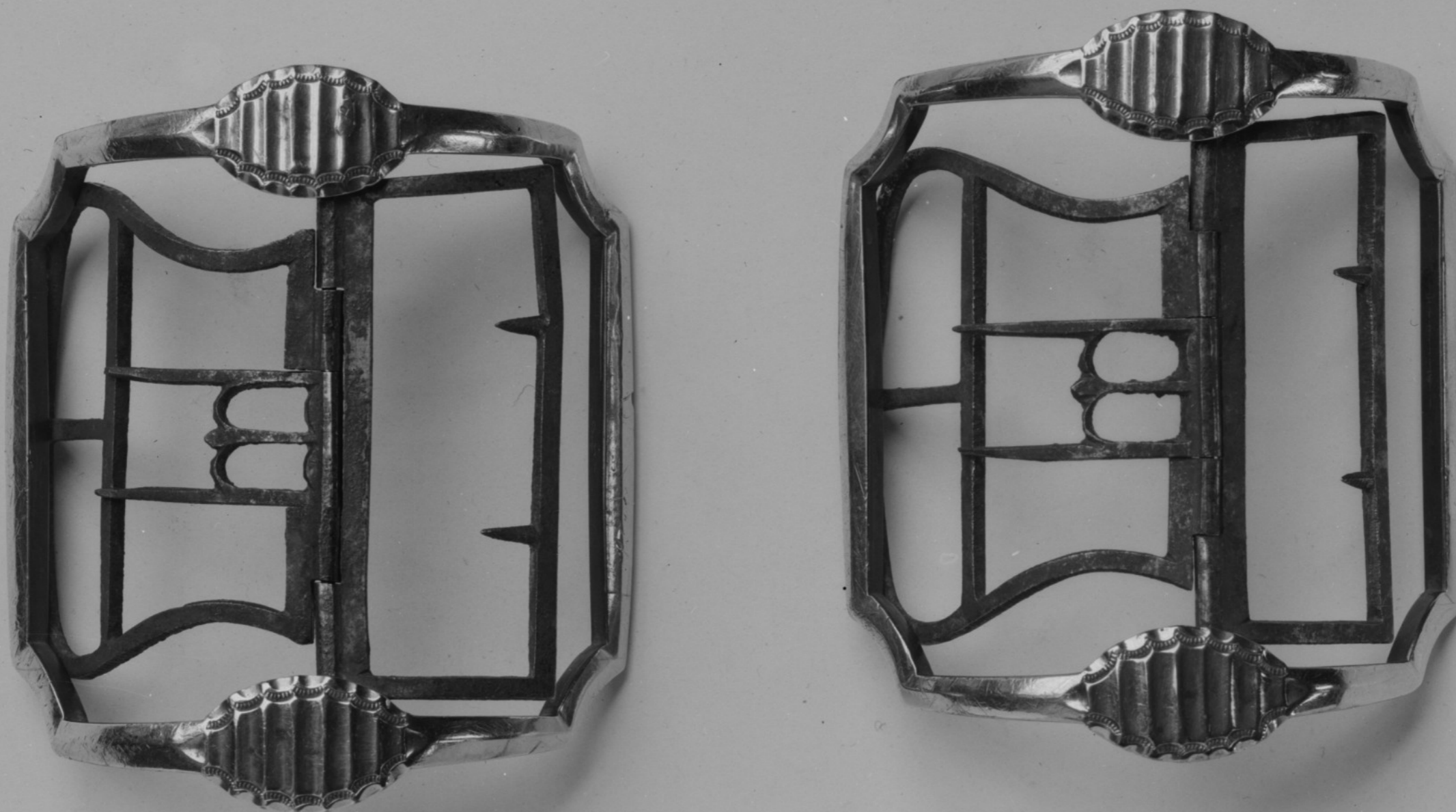
Brass Shoe Buckles
c. 1750 - 1800
(Historic New England)



English Silver Plated Brass & Steel Shoe Buckles
Late 18th Century
(Los Angeles County Museum of Art)



American Silver Plate on Brass Shoe Buckles
c. 1760-1785
(Metropolitan Museum of Art)

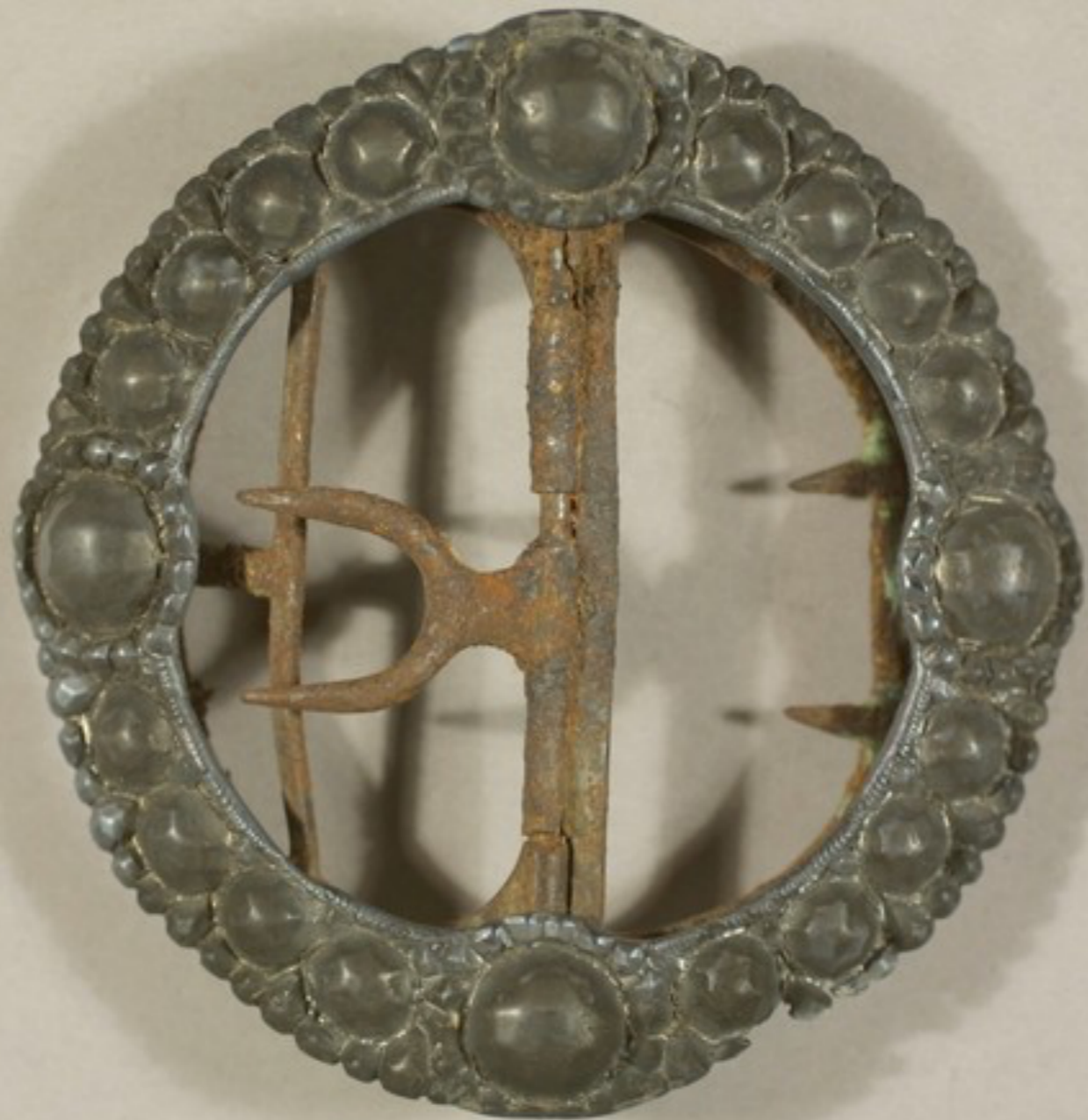


Silver on Brass or Copper & Steel Shoe Buckles
c. 1775 - 1800
(Metropolitan Museum of Art)



Silver on Brass or Copper Shoe Buckle
Late 18th Century - Early 19th Century
(Five Colleges and Historic Deerfield Museum Consortium)

Pewter Shoe Buckles



American Pewter & Steel Shoe Buckle
c. 1775 - 1800
(Historic New England)



American Pewter & Steel Shoe Buckle
c. 1750 - 1800
(Historic New England)



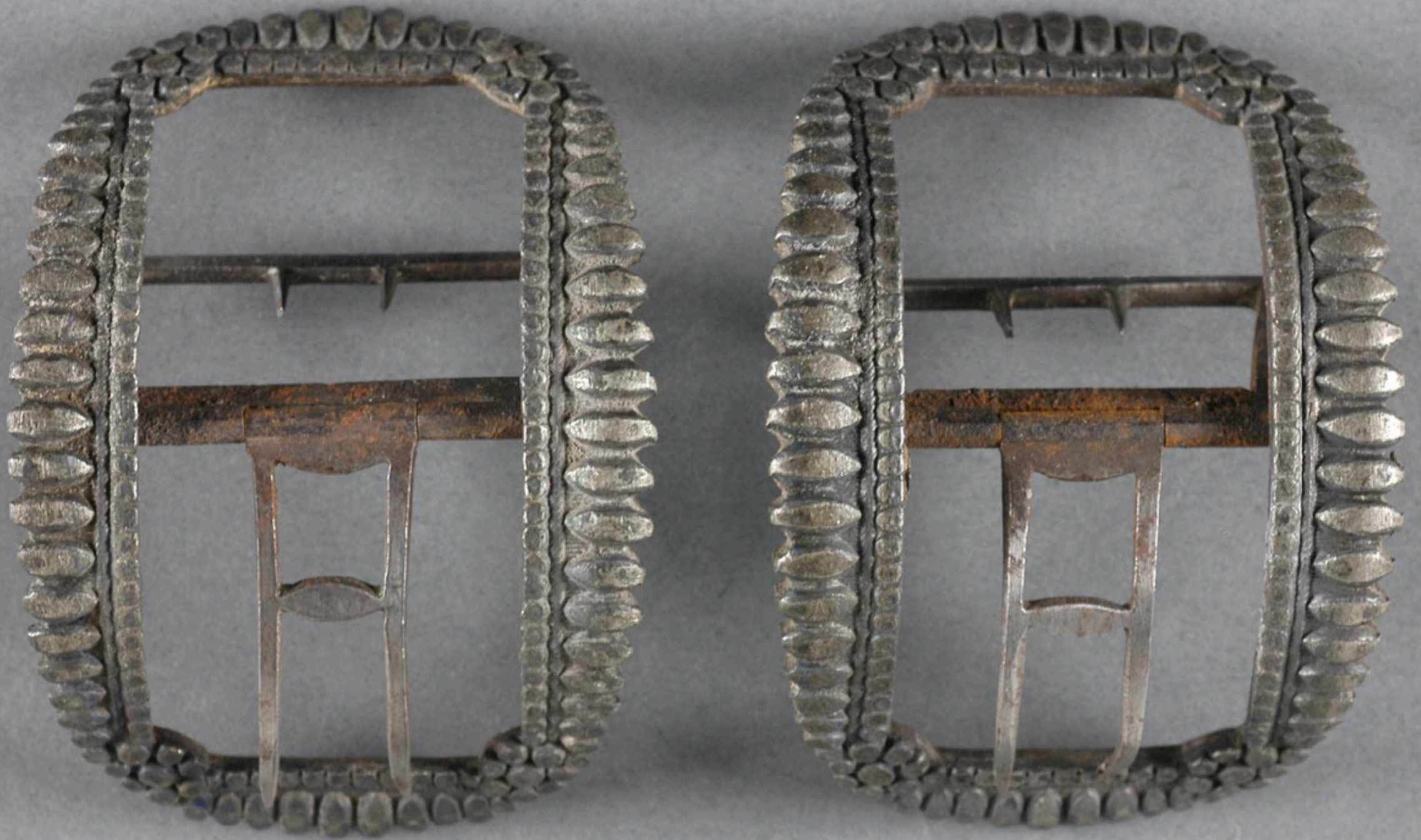
American Pewter & Steel Shoe Buckle
Late 18th Century
(Philadelphia Museum of Art)



American Pewter & Steel Shoe Buckles
c. 1770 - 1800
(Historic New England)



American Pewter & Steel Shoe Buckles
c. 1775 - 1800
(Historic New England)



American Pewter & Steel Shoe Buckle
Late 18th Century
(Philadelphia Museum of Art)



American Pewter & Steel Shoe Buckle
Late 18th Century
(Philadelphia Museum of Art)



American Pewter & Steel Shoe Buckle
Late 18th Century
(Philadelphia Museum of Art)



American Pewter & Steel Shoe Buckle
c. 1750 - 1800
(Historic New England)



Pewter & Steel Shoe Buckles
Late 18th Century - Early 19th Century
(Five Colleges and Historic Deerfield Museum Consortium)

Lead Shoe Buckles



American "Lead" & Steel Shoe Buckle
18th Century
(Philadelphia Museum of Art)



American "Lead" & Steel Shoe Buckle
18th Century
(Philadelphia Museum of Art)



American "Lead" & Steel Shoe Buckle
18th Century
(Philadelphia Museum of Art)



American "Lead" & Steel Shoe Buckles
18th Century
(Philadelphia Museum of Art)



American "Lead" & Steel Shoe Buckle
18th Century
(Philadelphia Museum of Art)



American "Lead" & Steel Shoe Buckles
18th Century
(Philadelphia Museum of Art)



American "Lead" & Steel Shoe Buckle
18th Century
(Philadelphia Museum of Art)



American "Lead" & Steel Shoe Buckle
18th Century
(Philadelphia Museum of Art)



American "Lead" & Steel Shoe Buckles
18th Century
(Philadelphia Museum of Art)

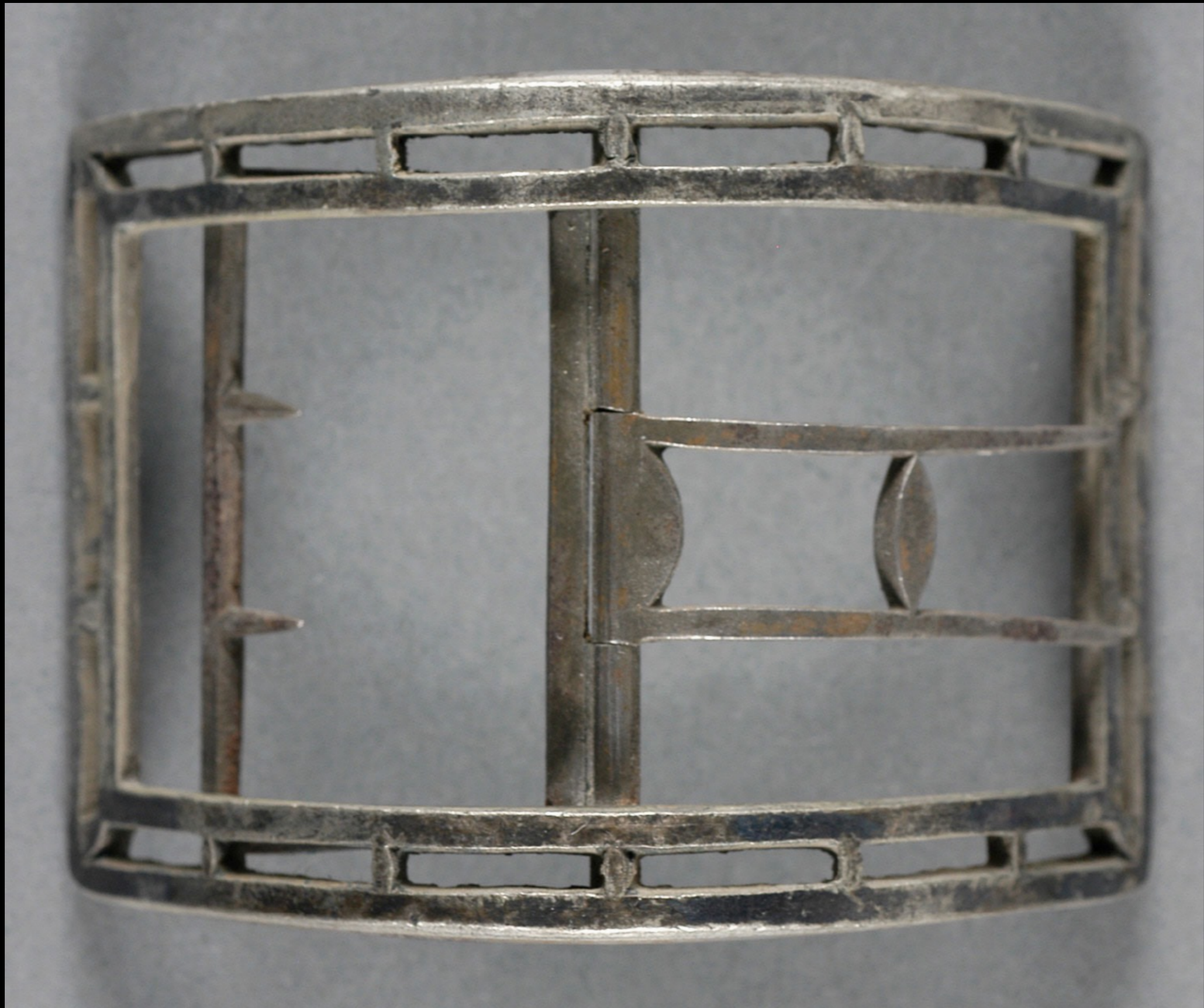


American "Lead" & Brass Shoe Buckles
18th Century
(Philadelphia Museum of Art)



American "Lead" & Steel Shoe Buckles
18th Century
(Philadelphia Museum of Art)

Steel & Iron Shoe Buckles



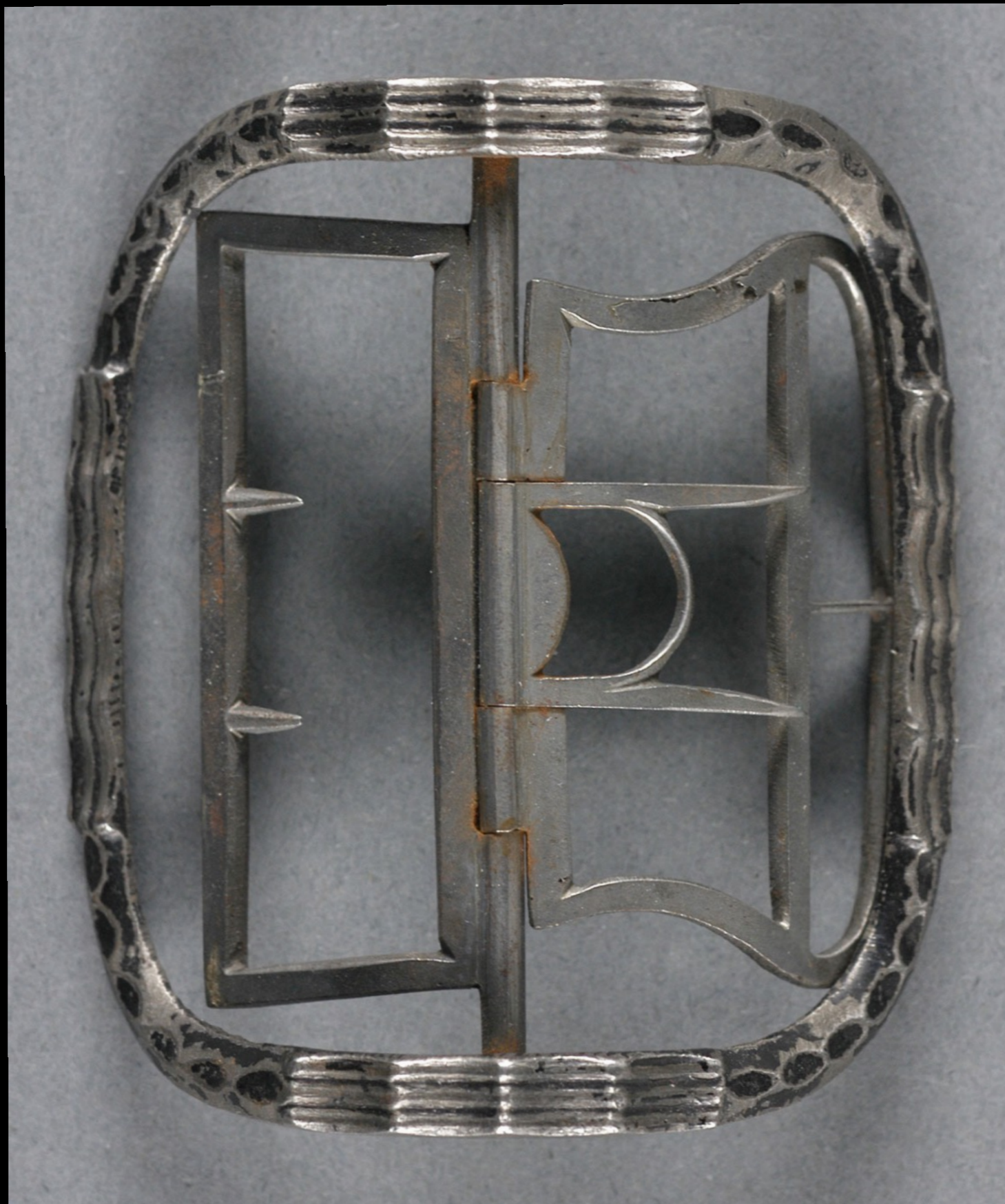
American Steel Shoe Buckle
Late 18th Century
(Philadelphia Museum of Art)



American Steel Shoe Buckle
Late 18th Century
(Philadelphia Museum of Art)



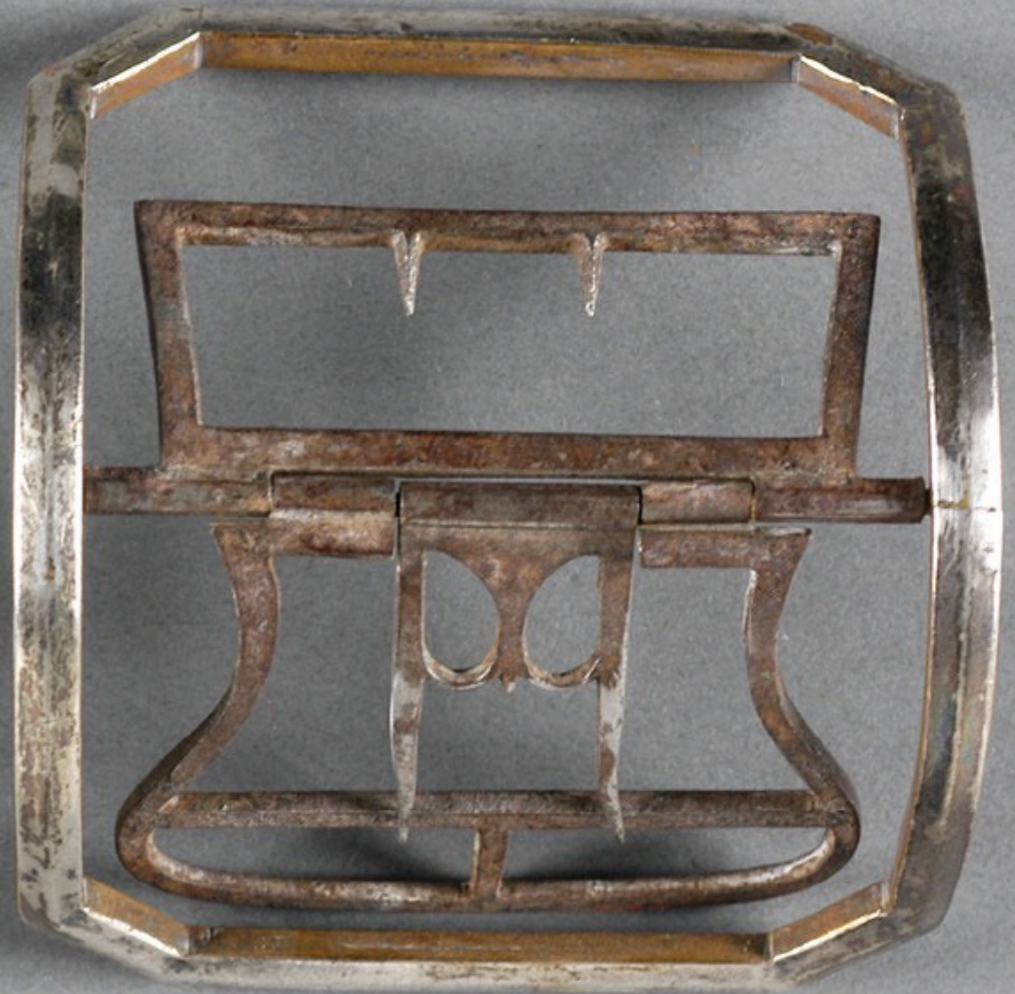
American Steel Shoe Buckle
Late 18th Century
(Philadelphia Museum of Art)



American Steel Shoe Buckle
Late 18th Century
(Philadelphia Museum of Art)



American Steel Shoe Buckles
Late 18th Century
(Philadelphia Museum of Art)



American Steel Shoe Buckles
18th Century
(Philadelphia Museum of Art)



Steel Shoe Buckle
18th Century
(Private Collection)



Steel & Brass Shoe Buckles
18th Century
(Five Colleges and Historic Deerfield Museum Consortium)



French Iron Shoe Buckle Recovered at Crown Point, New York
Mid 18th Century
(Crown Point Historic Park)



English Steel Shoe Buckles Decorated with Silver Foil

c. 1777 - 1780

(Victoria & Albert Museum)



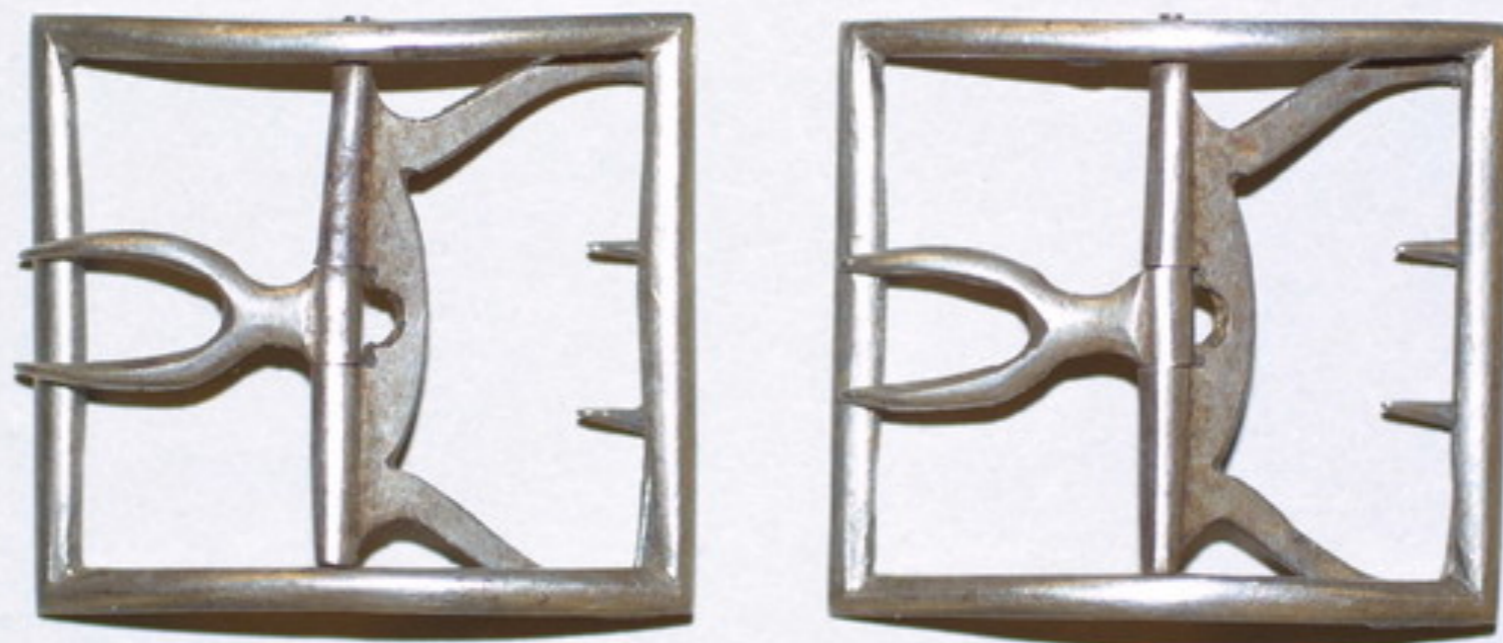
Steel Shoe Buckles
c. 1770 - 1800
(Historic New England)



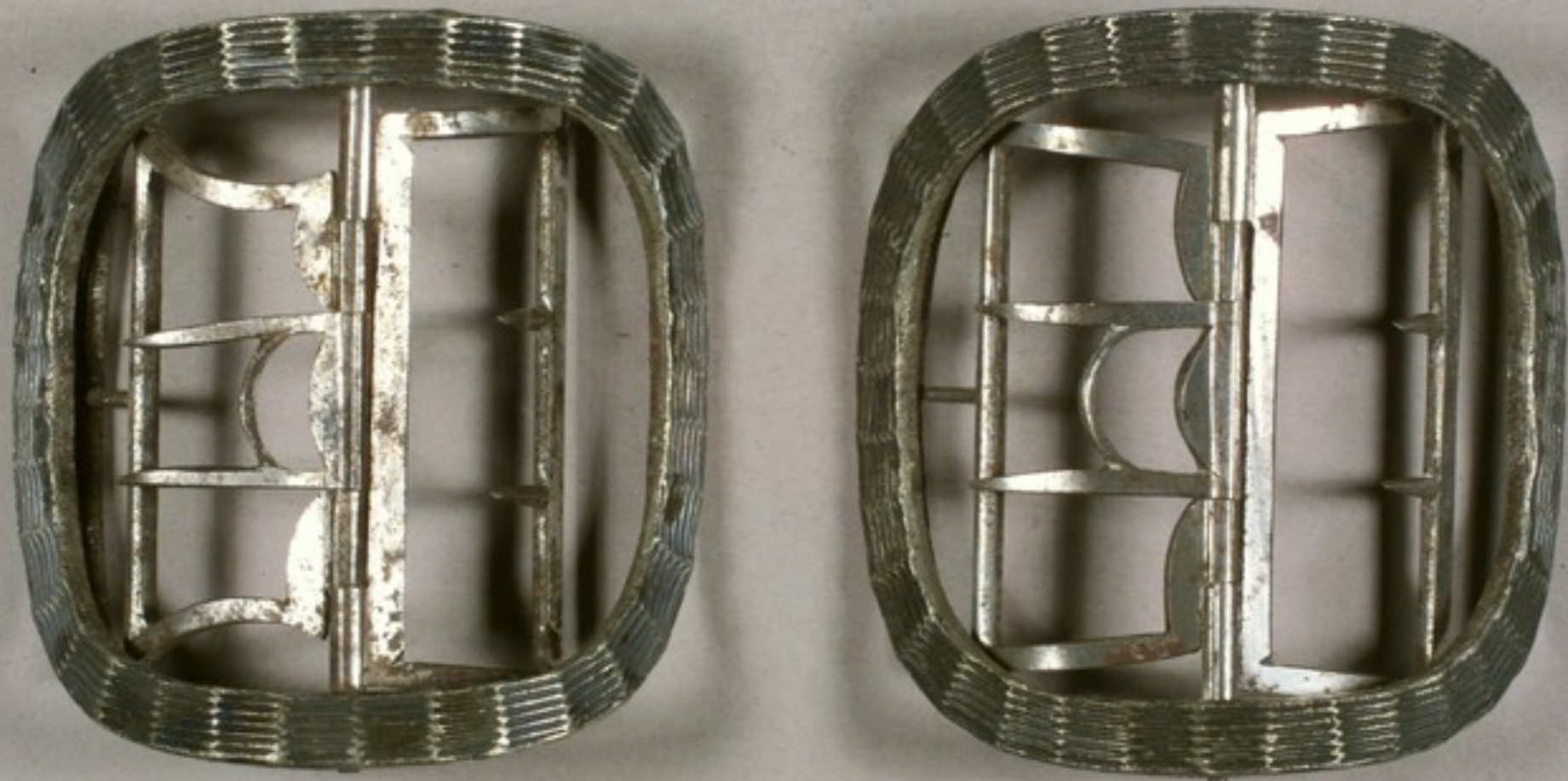
Steel Shoe Buckles
c. 1770 - 1800
(Historic New England)



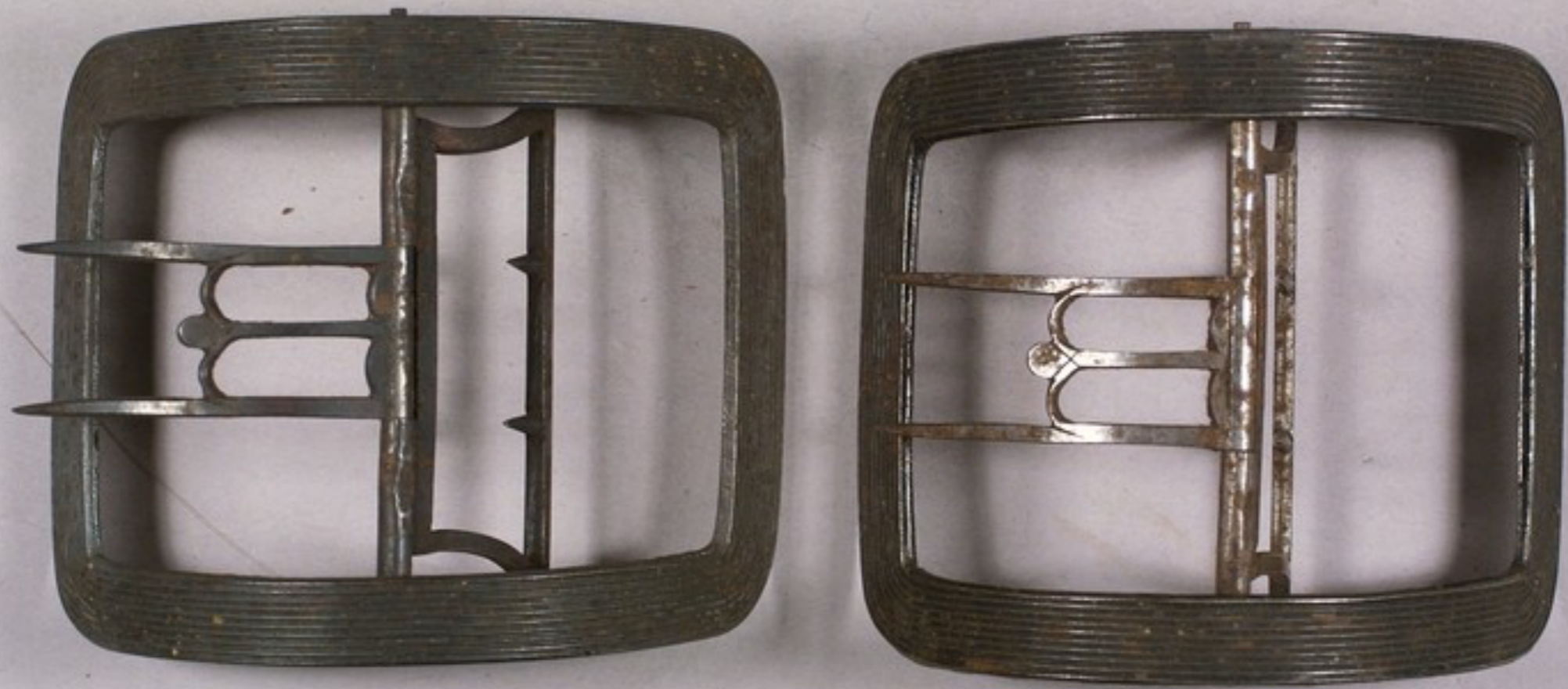
Steel Shoe Buckles (Top Center Pewter & Steel)
c. 1770 - 1800
(Historic New England)



Steel Shoe Buckles
c. 1750 - 1790
(Historic New England)



English or American Steel Shoe Buckles
c. 1775 - 1800
(Historic New England)



English or American Steel Shoe Buckles
c. 1775 - 1800
(Historic New England)



Steel (?) Shoe Buckles
Late 18th Century
(Cooper Hewitt)

Porcelain & Earthenware Shoe Buckles



English Porcelain & Steel Shoe Buckles from Derby
by William Dunesbury & Co. c. 1780
(Victoria & Albert Museum)



Steel & White Porcelain Shoe Buckles
Late 18th Century - Early 19th Century
(Five Colleges and Historic Deerfield Museum Consortium)



English Lead Glazed Earthenware & Steel Shoe Buckle from Staffordshire

c. 1740 - 1760
(Winterthur)

Excavated Shoe Buckles



Shoe Buckles Recovered from the Wreck of the General Carleton
1785
(Polish Maritime Museum)



Shoe Buckles Recovered from the Wreck of the General Carleton
1785
(Polish Maritime Museum)



Shoe Buckles Recovered from the Wreck of the General Carleton
1785
(Polish Maritime Museum)



Shoe Buckles Recovered from the Wreck of the General Carleton
1785
(Polish Maritime Museum)



Shoe Buckles Recovered from the Wreck of the General Carleton
1785
(Polish Maritime Museum)



Shoe Buckles Recovered from the Wreck of the General Carleton
1785
(Polish Maritime Museum)



Shoe Buckles Recovered from the Wreck of the General Carleton
1785
(Polish Maritime Museum)



Shoe Buckles Recovered from the Wreck of the General Carleton
1785
(Polish Maritime Museum)



Copyright Fort Ticonderoga Museum

Shoe Buckles Excavated at Fort Ticonderoga, New York
Mid - Late 18th Century
(Fort Ticonderoga)



Shoe Buckle Excavated at Fort Stanwix, New York
Mid - Late 18th Century
(Fort Stanwix, National Park Service)



Shoe Buckle Excavated at Fort Stanwix, New York
Mid - Late 18th Century
(Fort Stanwix, National Park Service)



Shoe Buckle Excavated at Fort Stanwix, New York
Mid - Late 18th Century
(Fort Stanwix, National Park Service)



Shoe Buckle Excavated at Fort Stanwix, New York
Mid - Late 18th Century
(Fort Stanwix, National Park Service)



Shoe Buckle Excavated at Fort Stanwix, New York
Mid - Late 18th Century
(Fort Stanwix, National Park Service)



Shoe Buckle Excavated at Fort Stanwix, New York
Mid - Late 18th Century
(Fort Stanwix, National Park Service)

Acknowledgements

The material contained within these slideshows is presented for educational purposes only. The 18th Century Material Culture Resource Center does not personally own any of the items depicted herein and is indebted to the countless museums, libraries, and private collectors who willingly share their collections with the public through the internet. Every attempt has been made to credit these organizations and individuals for their contributions as best as possible.

If there is a question you have regarding a particular item featured within a presentation, please contact the 18th Century Material Culture Resource Center and we will try to answer your inquiry as best as possible. If for any reason you feel there is any item that should not be presented here, or if there is an error in any listing, or if you know the source for any item whose credit is unknown, please inform us and we will make sure your concern is addressed as soon as possible.

Thank you!

- The 18th Century Material Culture Resource Center