

18th Century Material Culture

Relieving Thyself





MODESTY.

Engraved by J. Sayer. & J. Bennett. 1780. From the original in the possession of the British Museum.

“MODESTY”
by Sayer & Bennett
(The British Museum)

“Dippers”



Side Handled "Dippers"

Left: Early 16th Century Gray Proto - Stoneware from Bruges

Center: Mid to Late 16th Century Lead Glazed Slip Decorated Earthenware from Bergen - op - Zoom

Right: 16th Century Lead Glazed Earthenware from Bruges

(Noël Hume Collection; photo by Gavin Ashworth)

English

Lead Glazed Earthenware
Chamber Pots



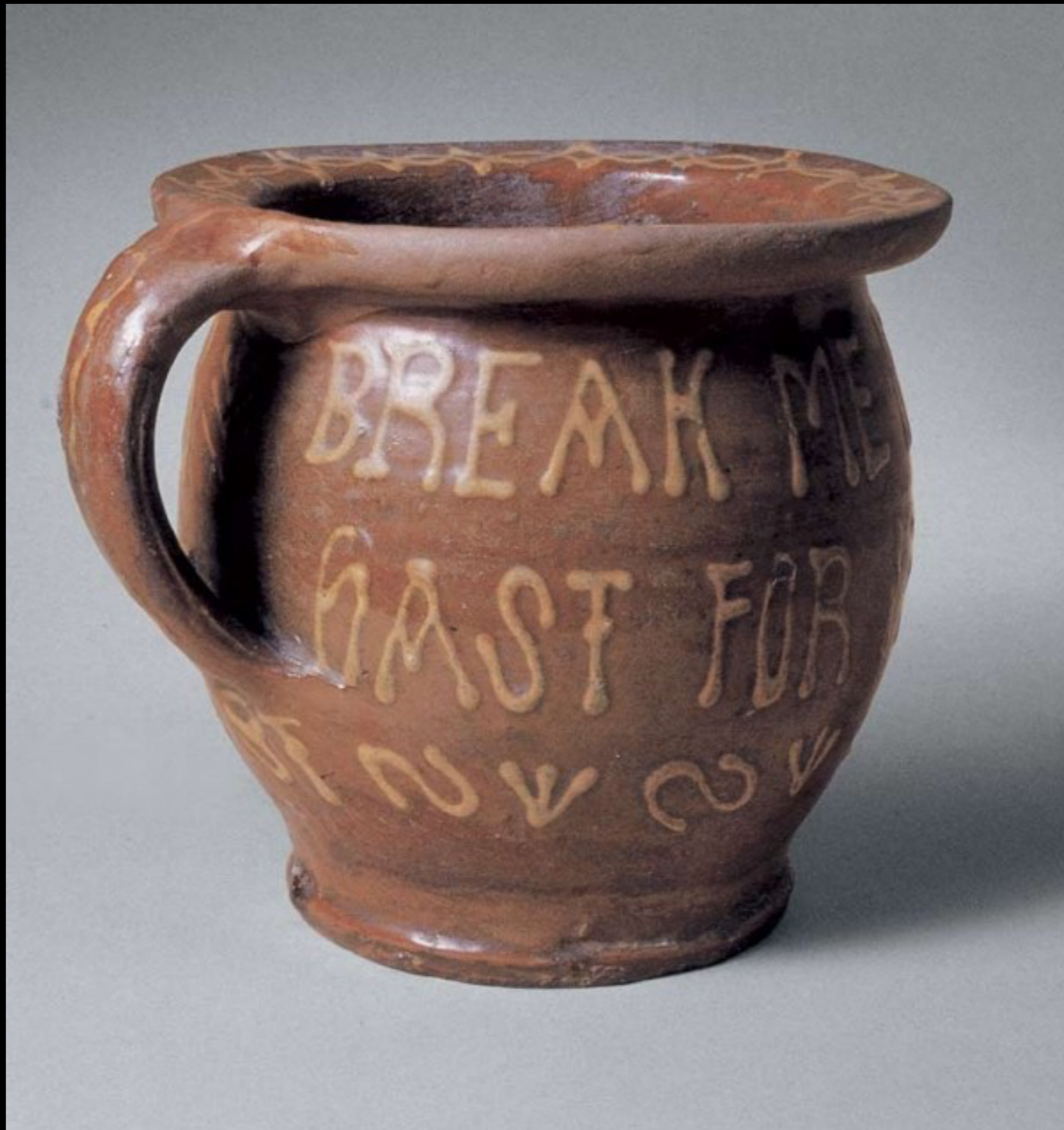
English Lead Glazed Interior Earthenware Chamber Pot from London
c. Mid to Late 17th Century
(Formerly in the Collection of Sir David Burnett)



English Lead Glazed Interior Earthenware Chamber Pot
c. 1600 - 1650
(Noël Hume Collection)



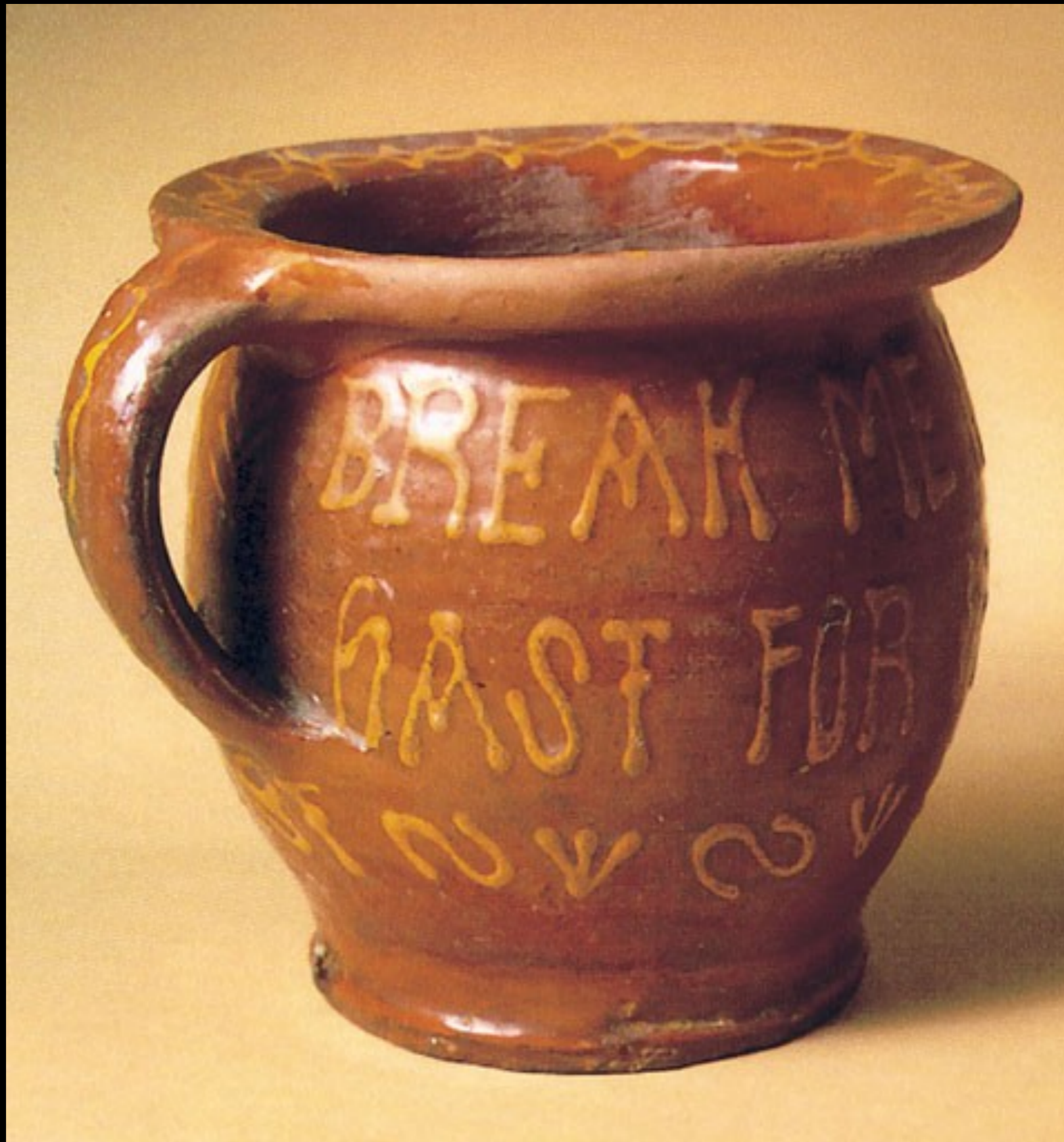
English Lead Glazed Interior Earthenware Chamber Pot
c. 1600 - 1700
(Victoria & Albert)



English Slip Decorated Lead Glazed Earthenware Pot from Harlow, Essex
“BREAK ME NOT I PRAY IN HAST FOR I TO YOU WILL GIVE DESTAST BE MERRY AND WIES” c. 1750
(Chipstone / Jonathan Hone)



English Slip Decorated Lead Glazed Earthenware Chamber Pot from Essex
“EART I AM TES MOST TRU DES DA / N ME NOT FOR SO EAR YOU 1656”
(Stoke-on-Trent Museum)



English Slip Decorated Lead Glazed Earthenware Chamber Pot from Essex
“BREAK ME NOT I PRAY IN YOUR HAST FOR I TO NON WILL GIVE DETAST” c. 1650 - 1665
(Jonathan Home)



English Slip Decorated Lead Glazed Earthenware Chamber Pot
c. 1650 - 1700
(Victoria & Albert)



English Slip Decorated Sgraffito Lead Glazed Earthenware Chamber Pot from North Devon
One of Many Shipment Damaged Wares Found in the Drainage Ditch of William May of Jamestown, Virginia c. 1670 - 1680
(National Park Service, Colonial National Historical Park, Chipstone Foundation, Photo Gavin Ashworth)



English Slip Decorated Sgraffito Lead Glazed Earthenware Chamber Pots Shards from North Devon
One of Many Shipment Damaged Wares Found in the Drainage Ditch of William May of Jamestown, Virginia c. 1670 - 1680
(National Park Service, Colonial National Historical Park, Chipstone Foundation, Photo Gavin Ashworth)



English Slip Decorated Sgraffito Lead Glazed Earthenware Chamber Pot Shard from North Devon
One of Many Shipment Damaged Wares Found in the Drainage Ditch of William May of Jamestown, Virginia c. 1670 - 1680
(National Park Service, Colonial National Historical Park, Chipstone Foundation, Photo Gavin Ashworth)



English Slip Decorated Lead Glazed Earthenware Chamber Pot from North Devon
c. 1680 - 1700
(Chipstone Foundation)



English Slip Decorated Lead Glazed Earthenware Chamber Pot from North Devon
c. 1680 - 1700
(Chipstone Foundation)



English Lead Glazed Earthenware Chamber Pot from North Devon
c. 1680 - 1700
(Chipstone)



English Lead Glazed Interior Earthenware Chamber Pot from London
Mid 18th Century
(Noël Hume Collection)



English Lead Glazed Earthenware Chamber Pot Recovered in an Excavation in Nottingham
18th Century
(Nottingham Brewhouse Yard Museum)



English Slip Decorated Lead Glazed Earthenware Chamber Pot from North Staffordshire
Found in Hanley, North Staffordshire Late 17th to Early 18th Century
(Stoke-on-Trent Museum)



English Slip Decorated Lead Glazed Earthenware Chamber Pot from North Staffordshire
Late 17th to Early 18th Century
(Ashmolean)



English Lead Glazed Earthenware Chamber Pot from Surrey / Hampshire
c. 1666 - 1700
(Museum of London)



English Lead Glazed Earthenware Chamber Pot & Plate Fragment, Possibly from Southwark
c. 1700 - 1720
(Noël Hume Collection; ex-collection Sir David Burnett)



English Lead Glazed Interior Earthenware Chamber Pots
From the General Carleton Shipwreck of 1785
(Polish Maritime Museum)

For Further Information on the Wreck of the General Carleton see:
Babits, Lawrence and Brenckle, Matthew; "Sailor Clothing."
In Ossowski, Waldemar, ed.; "The General Carleton Shipwreck, 1785."



English Earthenware (Creamware) Chamber Pot

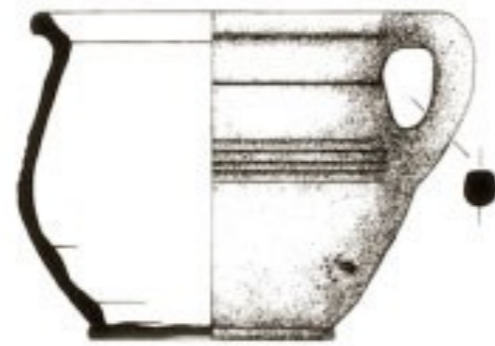
c. 1775 - 1800

(Department of Archaeological Research, Colonial Williamsburg Foundation)

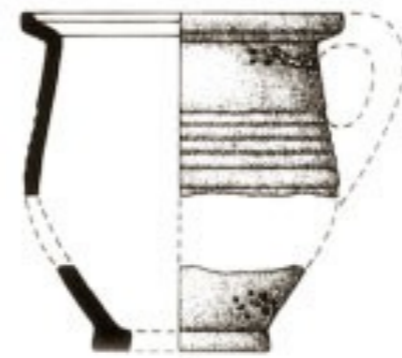


English & American Lead Glazed Earthenware & Salt Glazed Stoneware Chamberpots Found in Charlestown, Massachusetts
Found in the Privy of the Three Cranes Tavern, Charlestown. Burned by the British June 17, 1775
17th - 18th Centuries
(City of Boston Archeology Program)

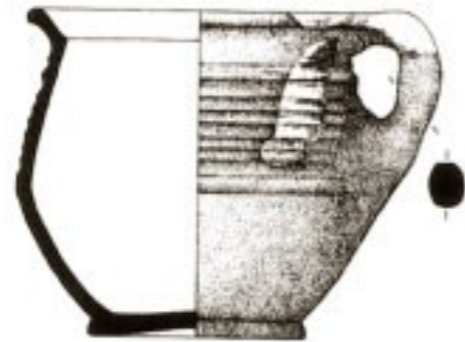
American
Lead Glazed Earthenware
Chamber Pots



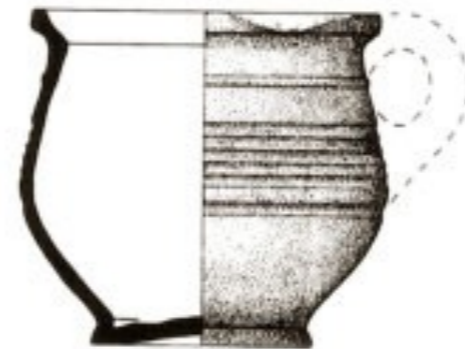
1



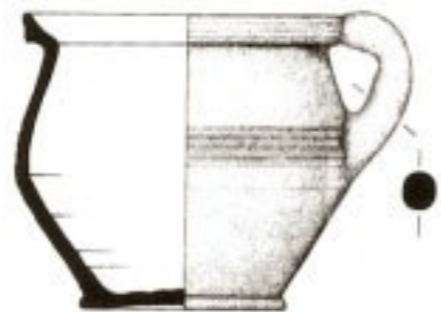
2



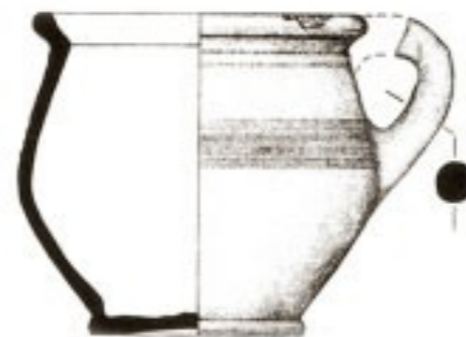
3



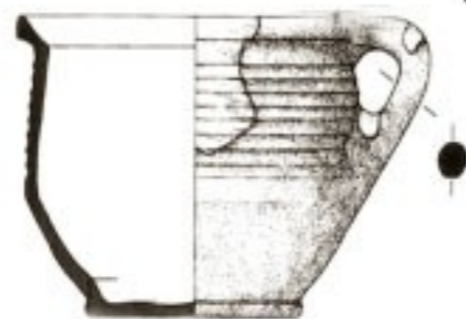
4



5



6



7

Pre - 1622

Pre - 1622

1623 - 1635

Harwood Plantation

Redware Chamber Pots from the Thomas Ward kilns at Martin's Hundred, Virginia
17th Century
(Colonial Williamsburg)



American Unglazed Earthenware Chamber Pot from Virginia
c. 1620 - 1622
(Department of Archaeological Research, Colonial Williamsburg Foundation)



American Lead Glazed Earthenware Chamber Pot Found in Charlestown, Massachusetts
Possibly Manufactured by the Drinker Family of Charlestown or Kettle Family of Salem, Massachusetts 17th Century
(City of Boston Archeology Program / Early American Ceramics by Justin W. Thomas)



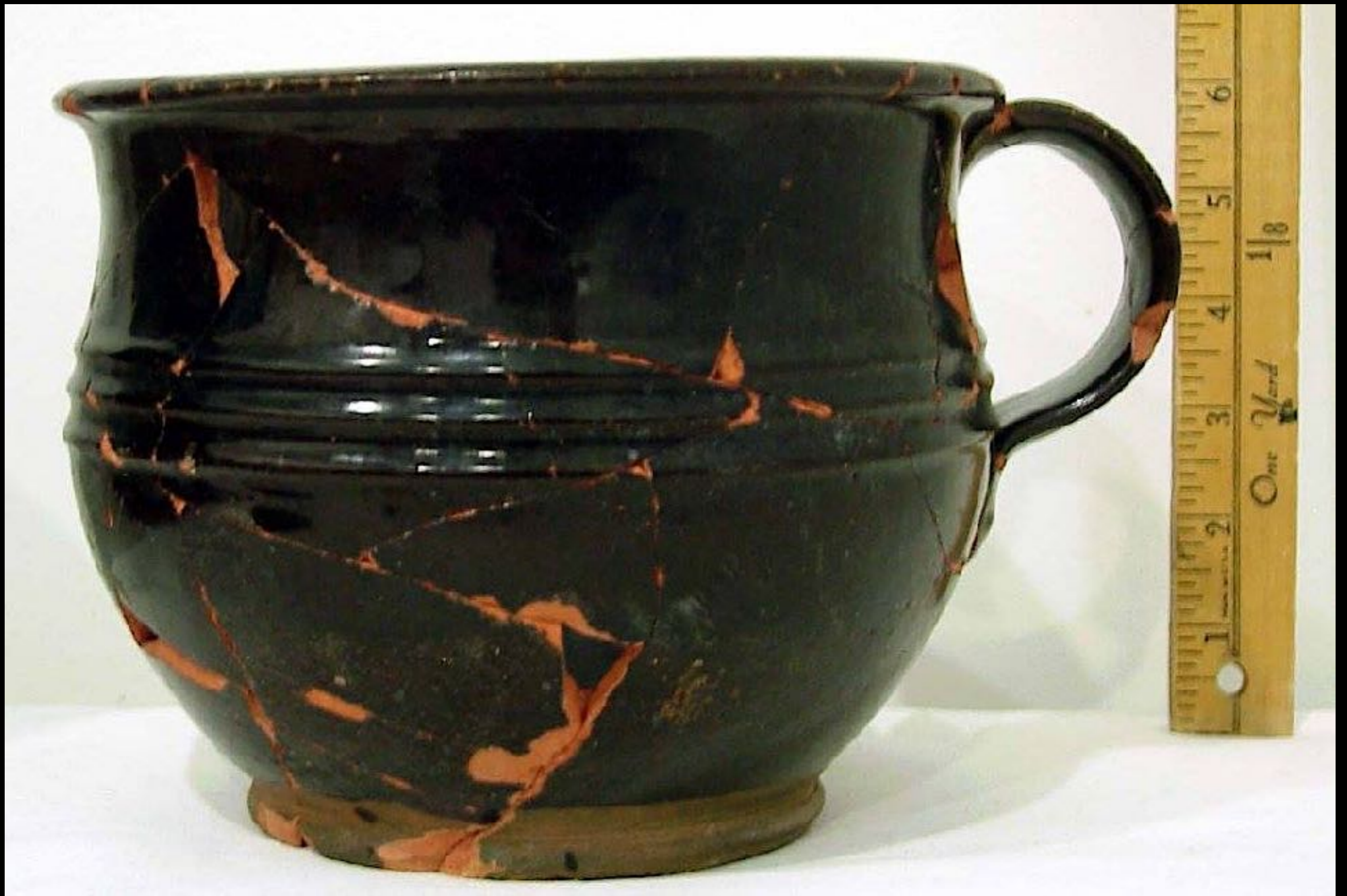
American Lead Glazed Earthenware Chamber Pot Found in Charlestown, Massachusetts
Possibly Manufactured by the Drinker Family of Charlestown or Kettle Family of Salem, Massachusetts 17th Century
(City of Boston Archeology Program / Early American Ceramics by Justin W. Thomas)



American Black Lead Glazed Earthenware Chamber Pot Attributed to Philadelphia, Pennsylvania
Recovered from a c. 1735 - 1755 Brick Lined Privy at 236 Church Street in Philadelphia. Thought to be Locally Made
(American Ceramics by Justin W. Thomas / Photo Courtesy Chris Rowell)



American Black Lead Glazed Earthenware Chamber Pot Attributed to Philadelphia, Pennsylvania
Recovered from a c. 1750 - 1769 Brick Lined Privy at 5 North 3rd Street in Philadelphia and Thought to be Locally Made
(American Ceramics by Justin W. Thomas / Photo Courtesy Chris Rowell)



American Black Lead Glazed Earthenware Chamber Pot Attributed to Philadelphia, Pennsylvania
Recovered from a c. 1740 - 1780 Privy at 232 Race Street in Philadelphia and Thought to be Locally Made
(American Ceramics by Justin W. Thomas / Photo Courtesy Chris Rowell)



American Black Lead Glazed Earthenware Chamber Pot Attributed to Philadelphia, Pennsylvania
Recovered from a c. 1740 - 1780 Privy at 232 Race Street in Philadelphia and Thought to be Locally Made
(American Ceramics by Justin W. Thomas / Photo Courtesy Chris Rowell)



American Black Lead Glazed Earthenware Chamber Pot Attributed to Philadelphia, Pennsylvania
Recovered from a c. 1740 - 1780 Privy at 232 Race Street in Philadelphia and Thought to be Locally Made
(American Ceramics by Justin W. Thomas / Photo Courtesy Chris Rowell)



American (?) Lead Glazed Earthenware Chamber Pot Found in Katherine Nanny Naylor's Privy in Boston
Mid to Late 17th Century
(City of Boston Archeology Program)



American Unglazed Earthenware (Colono - Ware) Chamber Pot from Virginia
c. 1750 - 1770
(Department of Archaeological Research, Colonial Williamsburg Foundation)



American Unglazed Earthenware (Colono - Ware) Chamber Pot from Virginia
Excavated at the Wetherburn Tavern Site, Williamsburg, Virginia c. 1720 - 1760
(Department of Archaeological Research, Colonial Williamsburg Foundation)



American Lead Glazed Interior Earthenware Chamber Pot from Philadelphia, Pennsylvania
Marked "CN" Found in the Privy of the City Almshouse in Philadelphia c. 1750
(Chipstone Foundation)



American Lead Glazed Interior Earthenware Chamber Pot from Philadelphia, Pennsylvania
Marked "CN" Found in the Privy of the City Almshouse in Philadelphia c. 1750
(Chipstone Foundation)



American Lead Glazed Interior (?) Earthenware Chamber Pot from Philadelphia, Pennsylvania
Marked "X" Found in the Privy of the City Almshouse in Philadelphia c. 1750
(Chipstone Foundation)



American Lead Glazed Slip Decorated Earthenware Chamber Pot Recovered in Wilmington, Delaware
From the New Sweden Settlement c. 1770 - 1780
(Chris Rowell - University of Delaware)



American Lead Glazed Slip Decorated Earthenware Chamber Pot Recovered in Wilmington, Delaware
From the New Sweden Settlement c. 1770 - 1780
(Chris Rowell - University of Delaware)



American Lead Glazed Slip Decorated Earthenware Chamber Pot Recovered in Wilmington, Delaware
From the New Sweden Settlement c. 1770 - 1780
(Chris Rowell - University of Delaware)



American Lead Glazed Slip Decorated Earthenware Chamber Pot from Charlestown, Massachusetts
Found in the Privy of the Three Cranes Tavern, Charlestown. Burned by the British June 17, 1775

c. 1740

(City of Boston Archeology Program)



American Lead Glazed Slip Decorated Earthenware Chamber Pot from Charlestown, Massachusetts
Found in the Privy of the Three Cranes Tavern, Charlestown. Burned by the British June 17, 1775

c. 1740

(City of Boston Archeology Program)



American Lead Glazed Slip Decorated Earthenware Chamber Pot from Charlestown, Massachusetts
Found in the Privy of the Three Cranes Tavern, Charlestown. Burned by the British June 17, 1775
Possibly by John Parker of Charlestown c. 1770
(City of Boston Archeology Program)



American Lead Glazed Slip Decorated Earthenware Chamber Pot Sherd from Massachusetts Found in Berwick, Maine
Possibly by John Parker of Charlestown Mid 18th Century
(Neil De Paoli / Early American Ceramics by Justin W. Thomas)



American Lead Glazed Earthenware Chamber Pot Likely From Charlestown, Massachusetts
Recovered at the Jethro Coffin House on the Island of Nantucket, Massachusetts. Likely Made in Charlestown Pre - 1775
(Nantucket Historical Association / Early American Ceramics by Justin W. Thomas)



American Lead Glazed Earthenware Chamber Pot from Philadelphia, Pennsylvania
Recovered from a Philadelphia Privy c. 1780 - 1790 and Thought to be Locally Made
(Bruce Adwell / Early American Ceramics by Justin W. Thomas)



American Lead Glazed Earthenware Chamber Pot Shard Found in Danversport, Massachusetts
Likely by a Potter dam Essex County, Massachusetts 18th Century
(Early American Ceramics by Justin W. Thomas)



American Lead Glazed Earthenware Chamber Pot from Virginia
by Henry Pierce of Alexandria, Virginia c. 1792 - 1796
(Chipstone)

Dutch
Lead Glazed Earthenware
Chamber Pots



Side Handled "Dipper" & Chamber Pot

Left: 16th Century Lead Glazed Earthenware Dipper from Bruges

Right: 16th Century Lead Glazed Earthenware Chamber Pot from Rotterdam

(Noël Hume Collection; photo by Gavin Ashworth)



Dutch Lead Glazed Earthenware Chamber Pots from the Netherlands
17th Century
(Ivor Noël Hume Collection; Photo by Gavin Ashworth)

French
Lead Glazed Earthenware
Chamber Pots



French (Probably) Earthenware Chamber Pot with Thin Internal Green Lead Glaze
From Hamilton, Bermuda Late 18th Century
(Noël Hume Collection)

English Tin Glazed
Earthenware
Chamber Pots



English Tin Glazed Earthenware Biscuit (Once Fired) Chamber Pot Fragment
Found at the Site of Christian Wilhelm's Pickleherring Factory c. 1650 - 1675
(Former Collection of Sir David Burnett)



English Tin Glazed Earthenware Chamber Pot

c. 1600 - 1714

(Museum of London)



English Tin Glazed Earthenware Chamber Pot from Lambeth
c. 1700
(Museum of London)



English Tin Glazed Earthenware Chamber Pot Fragment

c. 1650 - 1700

(The British Museum)



English or Dutch Tin Glazed Earthenware Chamber Pot
c. 1700 - 1800
(Colonial Williamsburg Foundation)



English Tin Glazed Earthenware Chamber Pot
c. 1700 - 1775
(Noël Hume Collection)



English Tin Glazed Earthenware Chamber Pots

c. 1735 - 1775

(Department of Archaeological Research, Colonial Williamsburg Foundation)



English Tin Glazed Earthenware Chamber Pot Fragment
From the Roscoe Cole House Site in Williamsburg, Virginia c. 1750 - 1760
(Department of Archaeological Research, Colonial Williamsburg Foundation)



English Tin Glazed Earthenware Chamber Pot from London
Excavated at the Edward Rumney / Stephen West Tavern, London Town, Maryland c. 1725
(Chipstone / Photo, Gavin Ashworth)



English Tin Glazed Earthenware Chamber Pot Fragment
From the Timberlake and Dana Site in Williamsburg, Virginia c. 1710 - 1730
(Department of Archaeological Research, Colonial Williamsburg Foundation)

American
Salt Glazed Stoneware
Chamber Pots



American Salt Glazed Stoneware Chamber Pot from Yorktown, Virginia

Attributed to William Rogers of Yorktown, Virginia c. 1720 - 1745

(National Park Service, Colonial National Historical Park, Yorktown Collection / Chipstone Foundation)



American Salt Glazed Stoneware Chamber Pot from Yorktown, Virginia

Attributed to William Rogers of Yorktown, Virginia c. 1720 - 1745

(National Park Service, Colonial National Historical Park, Yorktown Collection / Chipstone Foundation)



American Salt Glazed Stoneware Chamber Pot from Yorktown, Virginia
Attributed to William Rogers of Yorktown, Virginia c. 1720 - 1745
(Department of Archaeological Research, Colonial Williamsburg / Chipstone Foundation)



American Salt Glazed Stoneware Chamberpot Shard with Cobalt Decoration from Cheesequake, New Jersey
Attributed to Captain James Morgan c. 1775 - 1784
(Chipstone - Robert J. Simm Collection, MCHA, Photo Gavin Ashworth)



American Salt Glazed Stoneware Chamberpot Shard with Cobalt Decoration from Cheesequake, New Jersey
Attributed to Captain James Morgan c. 1775 - 1784
(Chipstone - Robert J. Simm Collection, MCHA, Photo Gavin Ashworth)



American Salt Glazed Stoneware Chamberpot Shards with Cobalt Decoration from Cheesequake, New Jersey
Attributed to Captain James Morgan c. 1775 - 1784
(Chipstone - Robert J. Simm Collection, MCHA, Photo Gavin Ashworth)



American Salt Glazed Stoneware Chamberpot Shards with Cobalt Decoration from Cheesequake, New Jersey
Attributed to Captain James Morgan c. 1776
(New Jersey State Museum - Robert J. Sim Collection/ Chipstone Foundation - Photos by Gavin Ashworth)



American Salt Glazed Stoneware Chamberpot Shards with Cobalt Decoration from Cheesequake, New Jersey
Attributed to Captain James Morgan c. 1776
(New Jersey State Museum - Robert J. Sim Collection/ Chipstone Foundation - Photo by Gavin Ashworth)



American Salt Gazed Stoneware Chamber Pot from Philadelphia, Pennsylvania
Attributed to Anthony Duché of Philadelphia c. 1730 - 1750
(Colonial Williamsburg Foundation)



American Salt Glazed Stoneware Chamber Pot Handle Sherd from Charlestown, Massachusetts
Recovered on Wrapping Street, Charlestown and Possibly Related to the Parker Pottery Stoneware c. 1741 - 1745
(City of Boston Archeology Program / Early American Ceramics by Justin W. Thomas)

English
Salt Glazed Stoneware
Chamber Pots



English Salt Glazed Stoneware Chamber Pot
c. 1760 - 1780
(Noël Hume Collection)



English Salt Glazed Stoneware Chamber Pot from Staffordshire
c. 1725 - 1750
(Department of Archaeological Research, Colonial Williamsburg Foundation)



English Salt Glazed Stoneware Chamber Pots
Recovered in Charlestown, Massachusetts c. 1740 - 1770
(City of Boston Archeology Program)



English Salt Glazed Stoneware Chamber Pot from Staffordshire
1741 - 1760
(Colonial Williamsburg Foundation)



English Salt Glazed Stoneware Chamber Pot from Staffordshire
c. 1760 - 1775
(Alexandria Archeology Museums, Alexandria, Virginia)

Westerwald
Salt Glazed Stoneware
Chamber Pots



Westerwald Salt Glazed Stoneware Chamber Pot
1632
(Ivor Noël Hume Collection)



Westerwald Salt Glazed Stoneware Chamber Pot
Mid 17th Century
(Crocker Farm)



Westerwald Salt Glazed Stoneware Chamber Pot
Mid 17th Century
(Crocker Farm)



Westerwald Salt Glazed Stoneware Chamber Pot
Mid 17th Century
(Crocker Farm)



Westerwald Salt Glazed Stoneware Chamber Pot
Mid 17th Century
(Catawiki - Geerhardtimpener)



Westerwald Salt Glazed Stoneware Chamber Pot
Mid 17th Century
(Catawiki - Geerhardtimpener)



Westerwald Salt Glazed Stoneware Chamber Pot
Mid 17th Century
(Catawiki - henk2641)



90.6.1

Westerwald Salt Glazed Stoneware Chamber Pot
Mid 17th Century
(Robert S. Peabody Institute of Archeology)



Westerwald Salt Glazed Stoneware Chamber Pot
Mid 17th Century
(Robert S. Peabody Institute of Archeology)

90.6.1



Westerwald Salt Glazed Stoneware Chamber Pot
c. 1650 - 1670
(Chris Fox Collection)



Westerwald Salt Glazed Stoneware Chamber Pot
Excavated at the Edward Rumney / Stephen West Tavern, London Town, Maryland c. 1725
(Chipstone / Photo, Gavin Ashworth)



Westerwald Salt Glazed Stoneware Chamber Pots
c. 1710 - 1780
(Ivor Noël Hume Collection)



Westerwald Salt Glazed Stoneware "Soap Dish" and Chamber Pot
c. 1750
(Ivor Noël Hume Collection)



Westerwald Salt Glazed Stoneware Chamber Pot Excavated in London
Late 17th - Early 18th Century
(Private Collection - Deaccessioned from MESDA & Old Salem)



Westerwald Salt Glazed Stoneware Chamber Pot
1741 - 1760
(Museum of London)



Westerwald Salt Glazed Stoneware Chamber Pot

c. 1675 - 1725

(Museum Boijmans)



German Salt Glazed Stoneware Chamber Pot Shard From the Ephraim Sprague House
c. Early to Mid 18th Century
(State of Connecticut - Department of Transportation)



German Salt Glazed Stoneware Chamber Pot Shard From the Harwood Plantation Site at Martin's Hundred, Virginia
c. 1625 - 1640
(Department of Archeological Research, Colonial Williamsburg Foundation)



German Salt Glazed Stoneware Chamber Pots Excavated in Holland
c. 1625 - 1640
(Noël Hume Collection)

English
Pearlware
Chamber Pots



English Pearlware Chamber Pot from Staffordshire
Found in the Captain Stephen Phillips Trash Pit, Salem Massachusetts c. 1785 - 1810
(Chipstone Foundation)

Metalware Chamber Pots



English Silver Chamber Pot
by David Willaume II c. 1743 - 1744
(Colonial Williamsburg)



English Pewter Chamber Pot
c. 1760 - 1790
(Colonial Williamsburg)



English Silver Chamber Pots from London
by Isaac Liger c. 1722 - 1723
(Victoria & Albert)



English Silver Chamber Pots from London
by Isaac Liger c. 1722 - 1723
(Victoria & Albert)

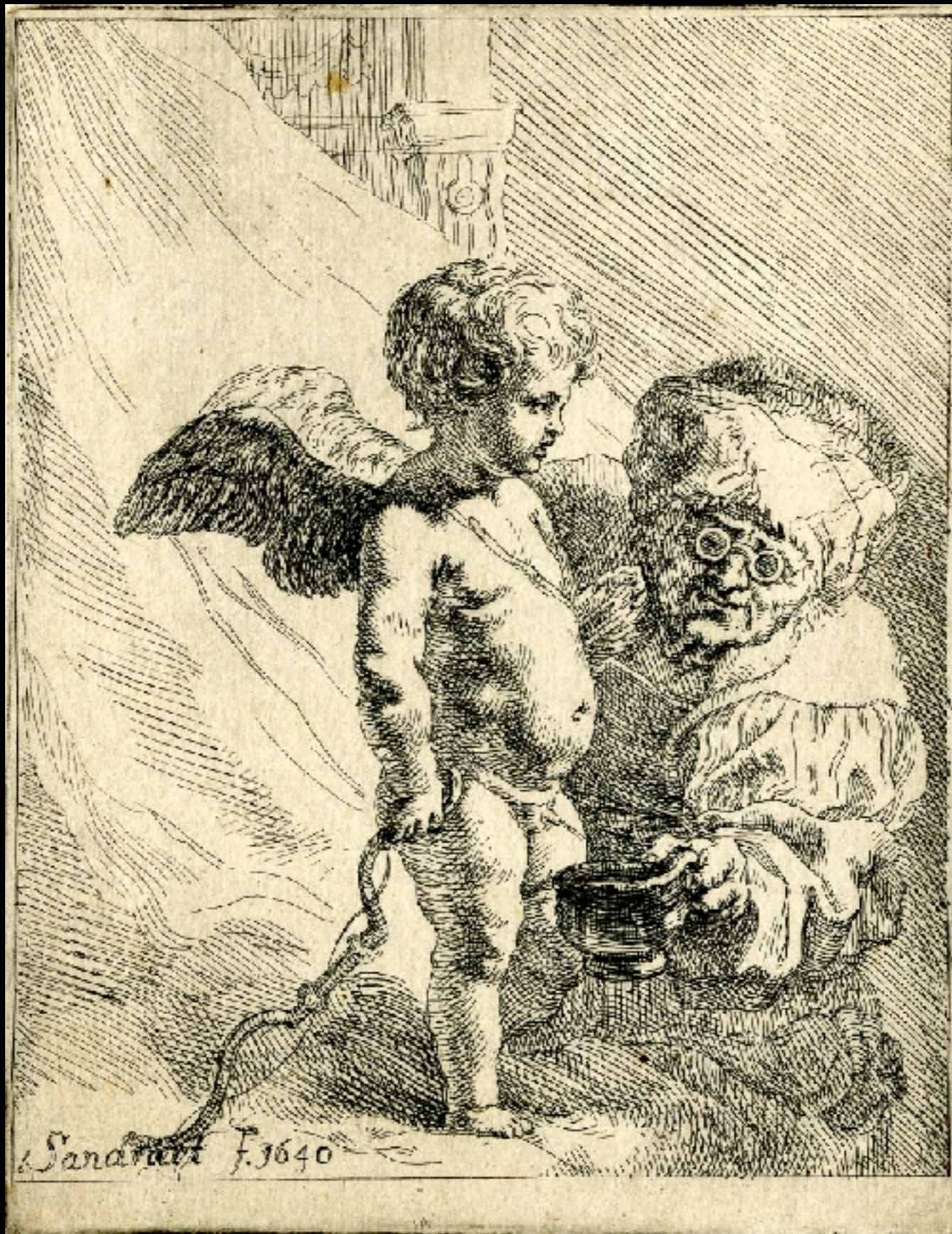


French Copper Chamber Pot (Missing Lid)
Mid 18th Century
(Chris Fox Collection)

Chamber Pots
in
Period Illustrations



Smokers & Drinkers
by Abraham Teniers (1629 - 1670)
(Palazzo Rosso)



Cupid Pissing (German)
by Joachim von Sandrart 1640
(The British Museum)



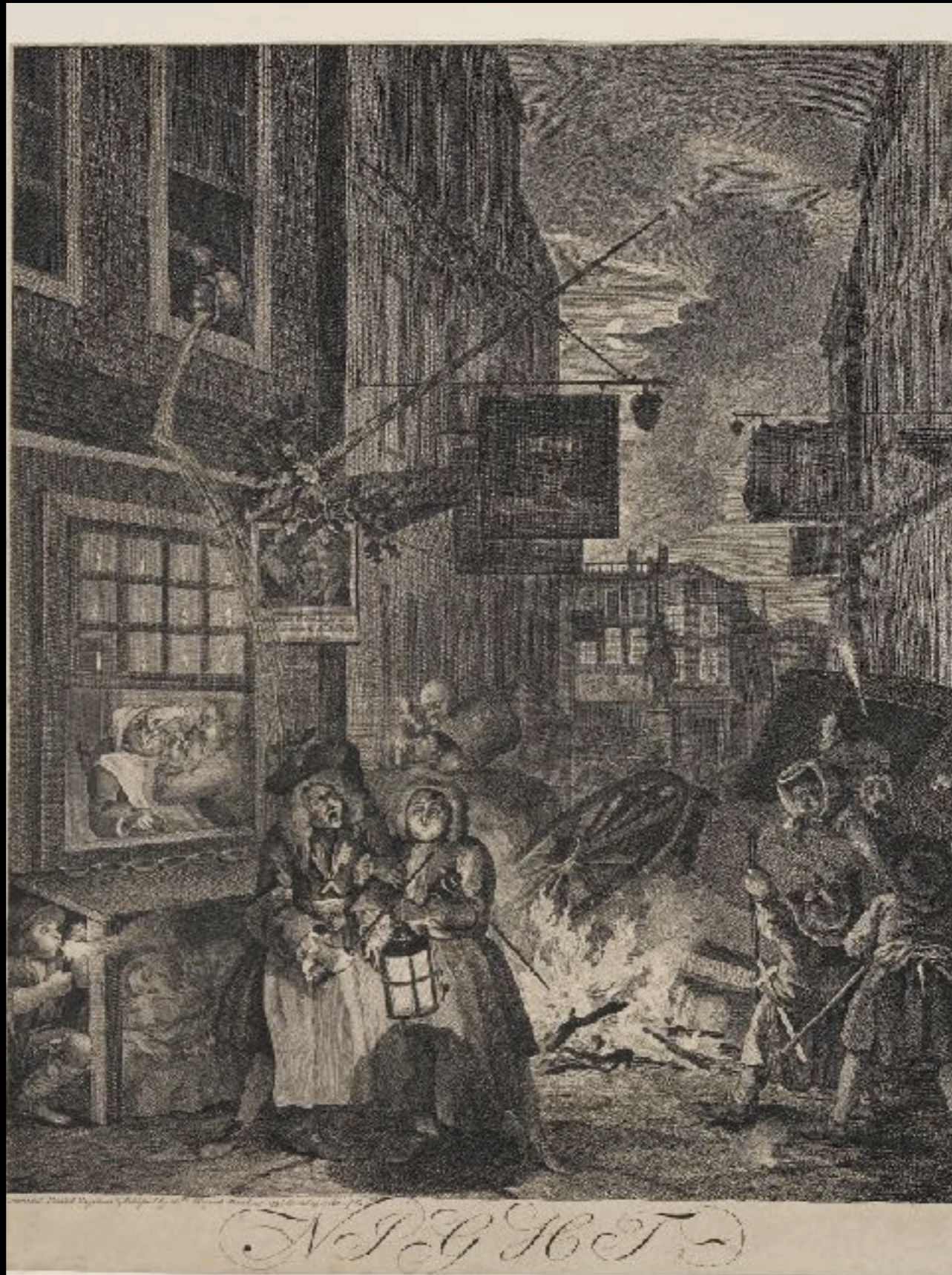
*But three Days past— Oh! Needles, poynts of Pins,
My Back—My Head—My XXXX Oh! my Shins,
Tets see my Shirt Oh! Spots of Green and Yellow
What will my Father say— A Pretty Fellow!*

Frontispiece "The Progress of a Rake; or, the Templar's Exit"
Published by John Brindley & Bispham Dickinson 1732
(The British Museum)



Pottery Peddler

by Anne Claude Philippe de Tubières, Comte de Caylus after Edme Bouchardon 1738
(Metropolitan Museum of Art)



N.P.C.H.T.

“The Four Times of Day: Night” by William Hogarth
1738



“The Four Times of Day: Night” by William Hogarth
1738



“The Antiquarians Puzzled, or the Chamber Pot Constitution
by William Humphrey 1773
(The British Museum)



“Antiquarians”
by Francis Grose 1770
(The British Museum)



"Antiquarians"
by Francis Grose 1770
(The British Museum)



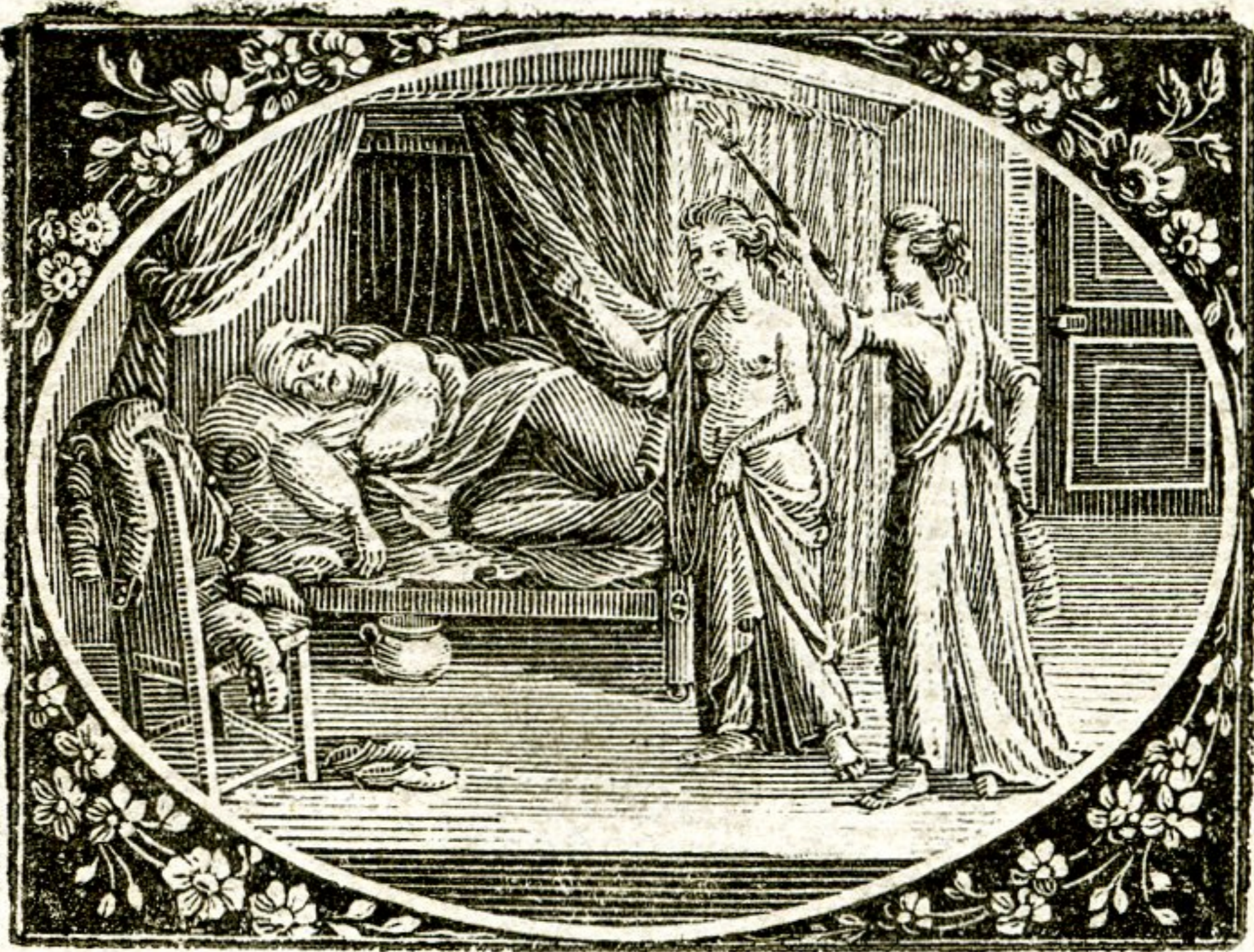
*Quincy did
Sarcasm having no way to lock up another, set fire to Dr. Slop's Magazine
being somewhat 'loopy & confused' without was as soon burnt as kindled —
You impudent! Where cried Slop (for what is paper but a wild Beast)
You impudent! Where cried Slop getting upright with the Cataplasm*

THE BATTLE OF THE CATAPLASM.

Published at the ... Street of February 1721. By J. Bretherton Druggist in Fleet Street

*in his hand — I will use the destruction of any body's nose and
Sarcasm, which is more than you can say: — It is 'cried Slop,
throwing the Cataplasm in her face — Yet it is cried Sarcasm
returning the Compliment with what was left in the pan' — No. 1721*

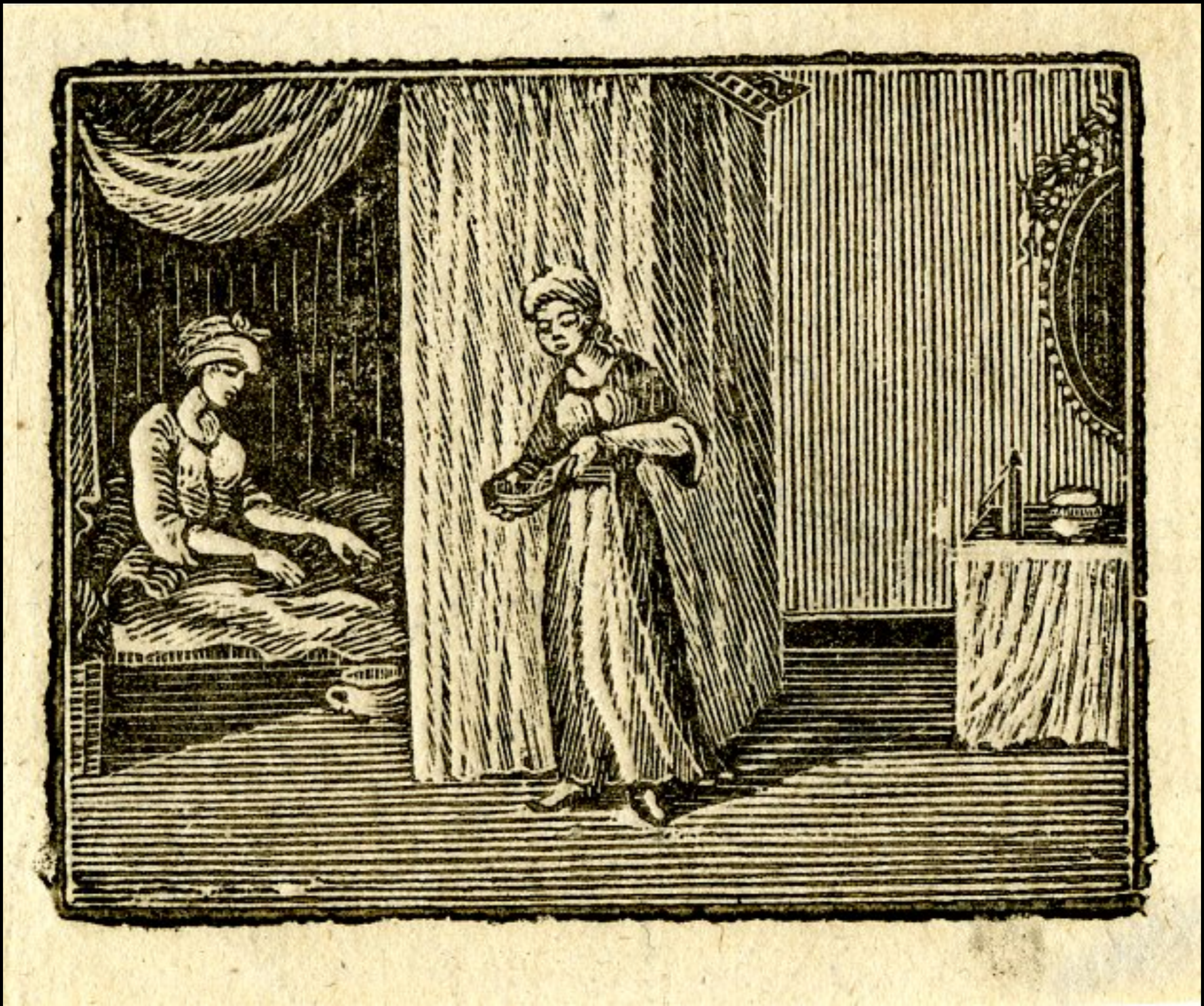
“THE BATTLE OF THE CATAPLASM”
by James Bretherton after Henry William Bretherton 1773
(The British Museum)



Book Print: "Fable of Industry & Sloth..."
by Thomas Bewick 1776 - 1784
(The British Museum)



“THE WHORE’S LAST SHIFT”
by James Gillray, Produced by William Humphrey 1779
(The British Museum)



Book Print: "Christmas Tales"
by Thomas Bewick 1780 - 1782
(The British Museum)



MR. S.

SUMMER AMUSEMENT.

BUGG HUNTING.

LONDON Published Aug. 20 1782 by J. R. Smith N. 83 Oxford Street.

“Summer Amusement. Bugg Hunting”
by Thomas Rowlandson, published by J.R. Smith 1782



“II Milanese”
by George Townley Stubbs after Richard Cosway
(The British Museum)



Monsieur, be so obliging as to make piss with us.

By the House of Bourbon. With the war we'll go on.

He's no heart of oak,
 But he's fit for a joke,
 That will ask of a Frenchman a peace;
 And such is our fate
 That we have of late
 Been degraded by puppies and geese.

L-d Shel —, begging
 Monsieur to make Piss or P—e.

To Britons success,
 Against the Congress,
 On the seas, and all over the plain;
 May they boldly advance,
 Make a Monkey of France,
 And asses of Holland and Spain.

Pub. by J. Barrow, Jun. 24. 1783. White. Lion Bull. Head, Survey. Side. Black. Friars. Bridge.

21 Jan. 1783

“L-d Shel—, begging Monsieur to make Oiss or P—e.”
 by Ja. Barrow 1783
 (The British Museum)



Printed for & sold by Carington Bowles.

Nº 69 in St. Pauls Church Yard, London.

A ST. GILE'S BEAUTY.

522

Published as the Act directs

“A St. GILE'S BEAUTY”
by Carington Bowles 1784
(The British Museum)





"INSIGNIA VILLAE DE PRETON"
by Isaac Cruikshank 1784
(The British Museum)



The DEVIL and the LAWYER.

Published as the Act directs, by Harrison, & Co. March 1. 1784.

“The DEVIL and the LAWYER.”
by Harrison & Co. 1785
(The British Museum)



"FORDING the JORDAN."
by William Dent, Published by James Aitken 1791
(The British Museum)

Commode Chairs

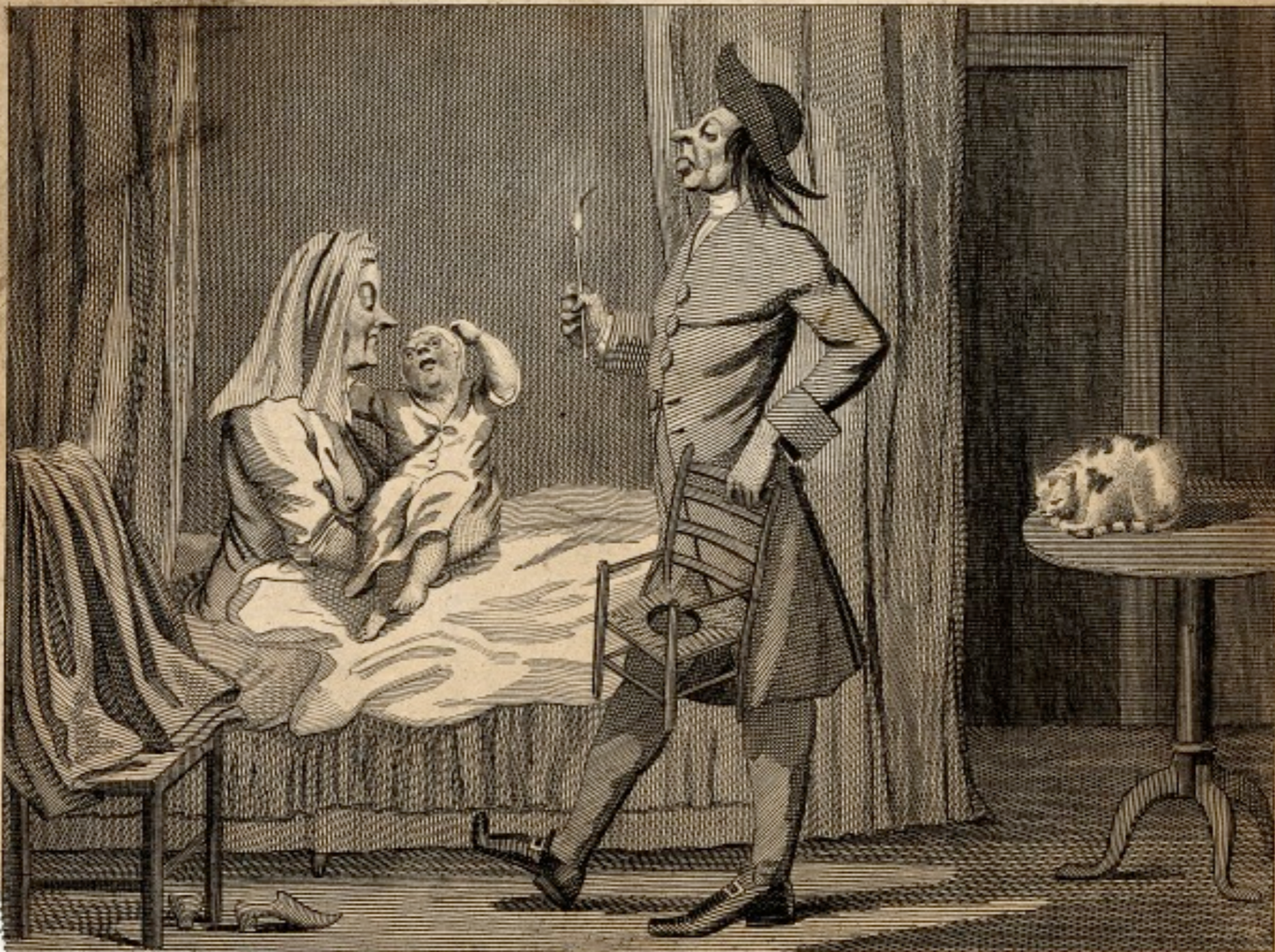


Commode Reported to Have Been Owned by King George III
c. 1765
(National Leather Collection)



Commode Reported to Have Been Owned by King George III
c. 1765
(National Leather Collection)

NEHEMIAH'S DISASTER — A TALE.



19A.
7

And behold about the ninth hour Tabitha the Wife of my Bosom awoke and said unto me, Arise Nathaniel speedily and make no long tarrying or delaying, but enter into the next Room, and nigh unto that which payeth tribute to Caesar, standeth a Wicker Chair, whercom hangeth a Garment call'd a Red Petticoat — dive in the Pocket thereof and take out thence two Forthings and go to Obadiah the Tallow Cheddler and buy two Candles, light one of them & bring it presently for I fear our last born Son Nehemiah, hath befouled himself. — Hem — Hem.

229

Printed and Sold by L. S. J. & W. H. 51, King Street, London.

“NEHEMIAH'S DISASTER”

1769



English Oak Child's Commode
c. 1701 - 1800
(Victoria & Albert)



English Oak Child's Commode
c. 1710
(National Trust - Dyrham, Gloucestershire)

Bed Pans



Wellcome Images

English Pewter Bed Pan
by Birch & Villers c. 1772 - 1786
(Wellcome Library)



English Pewter Bed Pan
by Birch & Villers c. 1772 - 1786
(Physick Medical Antiques)



Pewter Bed Pan
18th Century
(Freeman's Auctions)



English Bed Pan from London
by Thomas Swanson c. 1765 - 1800
(New Hampshire Historical Society)



English Bed Pan from London
by Thomas Swanson c. 1765 - 1800
(New Hampshire Historical Society)



American Pewter Bed Pan Owned by George Washington
by Frederick Bassett of New York Late 18th Century
(Mount Vernon)



American Pewter Bed Pan from Pennsylvania
by William Wills c. 1764 - 1798
(Winterthur)



French Pewter Bed Pan with Crowned Rose Marking
c. 1780 - 1830
(Phisick Medical Antiques)



French Pewter Bed Pan with Crowned Rose Marking
c. 1780 - 1830
(Phisick Medical Antiques)



French Pewter Bed Pan with Crowned Rose Marking
c. 1780 - 1830
(Phisick Medical Antiques)

Bordaloos



Leather Bordalou or Boat Shaped Female Urinal
c. 1701 - 1730
(Science & Society Picture Library)



Chinese Export Famille Rose Porcelain Bordaloo used for Female Urination
18th Century
(Reeman Dansie Auctioneers)



Lady Relieving Herself using a Bordaloo
by François Boucher (1703 - 1770)



6 May 1784

“The MIDDLESEX Jest or Double Entendre”
by Anonymous 1784
(The British Museum)

Latrines



General James Wolfe at Quebec
by George Townshend 1759
(McCord Museum)

Outhouses
Privies
Bogs



Sawney in the Boghouse:

To London Sawney come, who from his birth, | Then down each venthole through his leamy thighs;
Had kept his Folio Gates on Mother Earth; | And Spueing cry'd - Sawney a Laird I crow.
Shewn to a Boghouse, gaz'd with wondering Eyes; | Nor did he wadly disembraige till now.

Printed and Sold by J. Smith, in Pall Mall, 1745.

“Sawney in the Boghouse”
by Charles Mosley 1745
(The British Museum)



“Sawney in the Boghouse”
by Charles Mosley 1745
(The British Museum)

B.M.
3988

SAWNEY IN THE BOG-HOUSE.

39



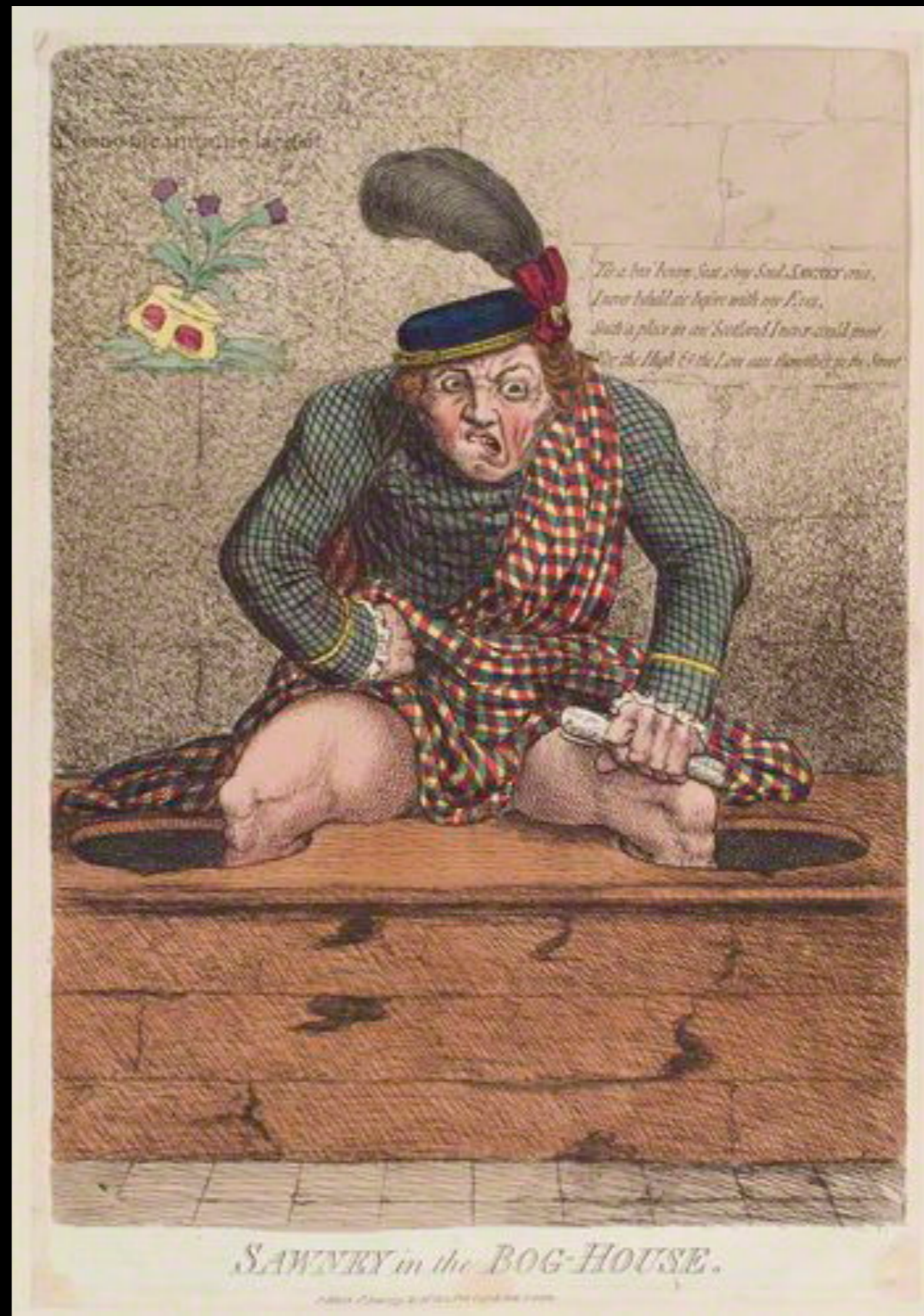
*Sawney who ever from his Birth, Down each Hole thrusts his knave's self,
Had drop'd his Cates on Mother Earth, sawney's a Lard, he cries, I trow,
Shewn to a Boghouse, with Surprise, Yet did he nobly sh-e-t till now.*

“SAWNEY IN THE BOG HOUSE”
by E. Sumpter 1762
(Lewis Walpole Library)



“SAWNEY IN THE BOG HOUSE”

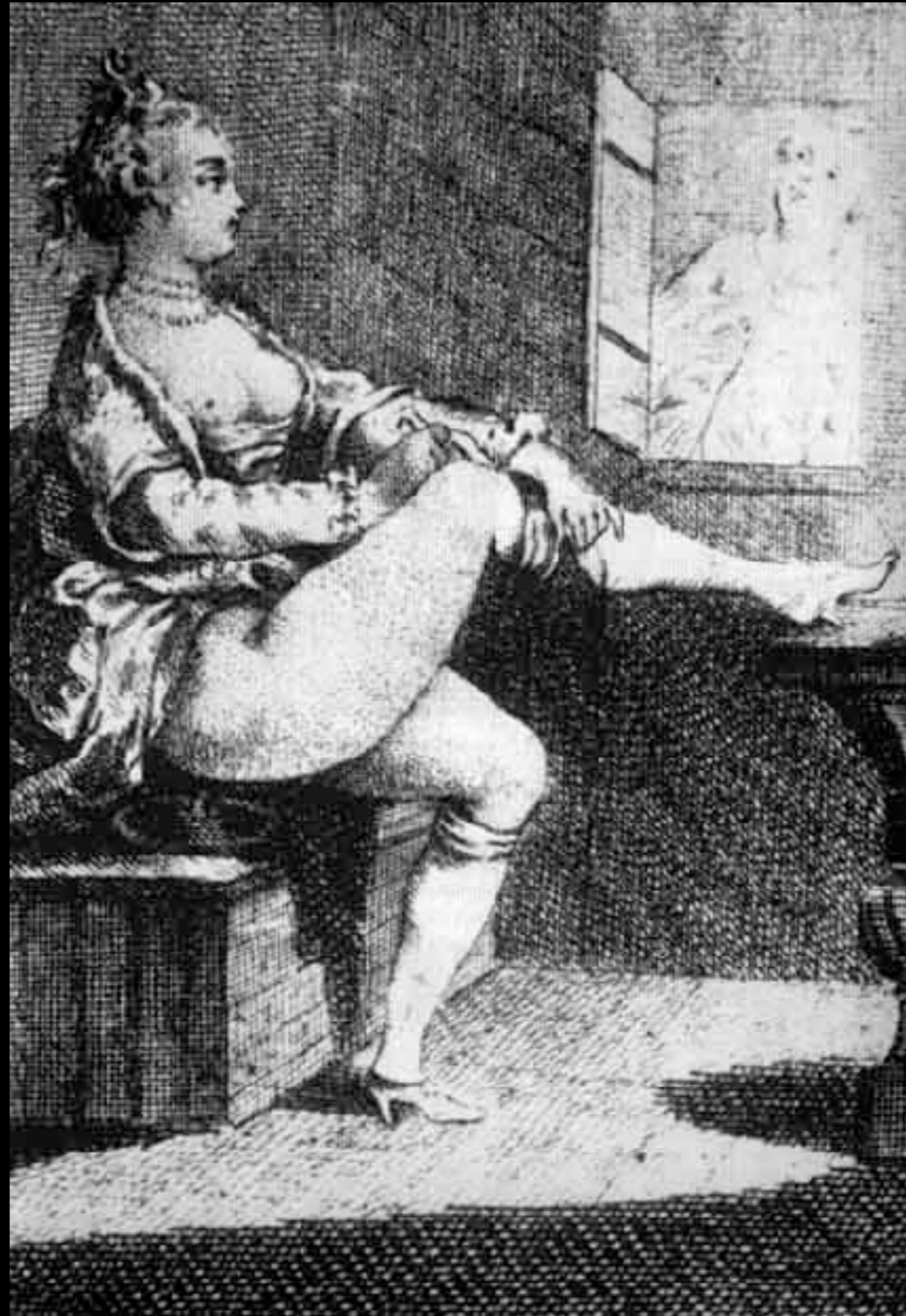
by E. Sumpter 1762
(Lewis Walpole Library)



“SAWNEY in the BOG-HOUSE”
by James Gillray, published by Mrs Holt June 4, 1779
(National Portrait Gallery)



"The CONGRESS or The NECESSARY POLITICIANS" 1775
(The British Museum)



Unknown



"A Just View of the British Stage"
by William Hogarth 1724



O my Back!

Good Luck!

What a Stomach!

Curse the French!

I'm quite gone!

Down the Down!

War's all agreed!



How I've bound!

I'm quite sick!

It's a Spanish Trick!

I'm all in vain!

What a strain!

Five Pies!

I've just done!

In a certain Great House that there is in this Land,

But in this little House it is quite the reverse,

When a motion is made on your Feet you must stand,

When a motion is made you must sit on your

**THE
State of the
NATION.**

Sold by W. Halliday, No. 20, Bedford St.

"THE STATE OF THE NATION"

June 24, 1778

(John Carter Brown Library)

Handwritten names above the top row of illustrations:
 1. *Shelton*
 2. *Le comte de la Roche*
 3. *Walt*
 4. *Henry*
 5. *Waller*
 6. *Wallerfield*
 7. *Wallerfield*



13

5

THE STATE OF THE NATION

ETAT DE LA NATION ANGLAISE. Pub^l June 24 1778

c. 1778

1778

1778

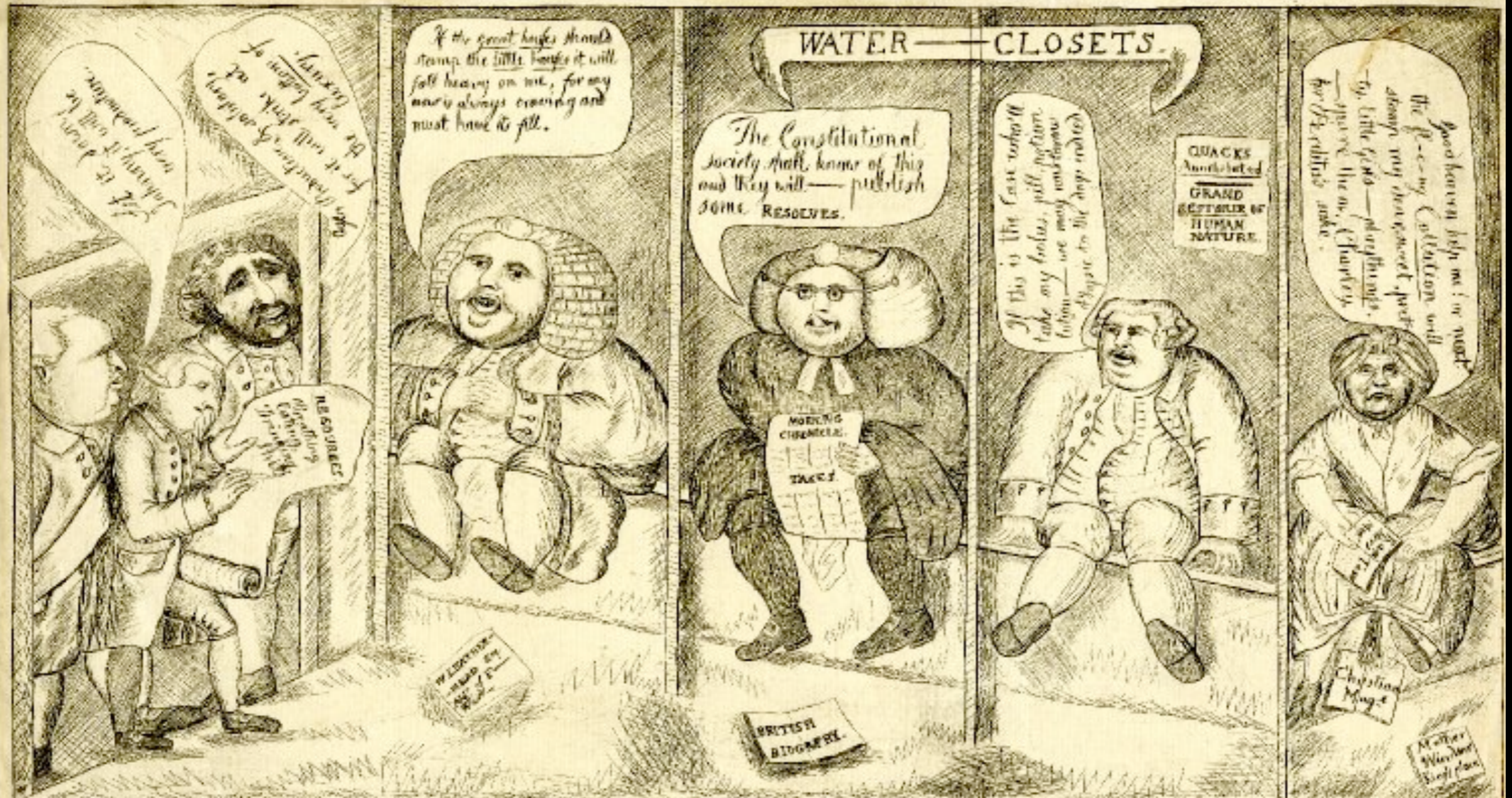
1778

1778

“THE STATE OF THE NATION” / “ETAT DE LA NATION ANGLAISE”

June 24, 1778

(John Carter Brown Library)



Publ'd by W. Dent N° 118 Strand 1783.

DUTY on or **DISCHARGES,**

A COMPANION to the **RECEIPT TAX.**

*From Stamps, so sharp, and so strange, there's no death,
They touch if you die, or Physic for health;
The Coalition strange, our mettle to damp,
Likewise bid Johnny birth and marriage to stamp.*

*And stranger still, our Commerce for to vamp,
They wisely Receipts confound with a stamp,
To prove they all others at stamping surpass,
Perhaps, they'll next order a stamp for the A—.*

DUTY on DISCHARGES or A COMPANION to the RECEIPT TAX
Printed by William Dent 1783
(The British Museum)



Brick Privy Built by Thomas Jefferson at His Retreat, Poplar Forest



Brick Privy of the Stenton House of Philadelphia, Pennsylvania



4 Hole Bog House



Outhouse Behind the Silas Deane House
c. 1769 - 1780
(Webb - Deane - Stevens Museum)



Outhouse Behind the Silas Deane House
c. 1769 - 1780
(Webb - Deane - Stevens Museum)



Outhouse Behind the Silas Deane House
c. 1769 - 1780
(Webb - Deane - Stevens Museum)



Outhouse Behind the Silas Deane House
c. 1769 - 1780
(Webb - Deane - Stevens Museum)



New & Old Brick Privies of Benjamin & Mary Humphries
Philadelphia, Pennsylvania
(Museum of the American Revolution)

Miscellaneous



A House divided against its self cannot stand Mat. Chap 12th verse 25.

“THE LOOKING GLASS for 1787”
 by Amos Doolittle 1787
 (Library of Congress)



"THE LOOKING GLASS for 1787"
by Amos Doolittle 1787
(Library of Congress)

Last, But Not Least...
It's Slightly Later,
But Too Good
To "Pass" Up



English Convenience - the Water Closet.



Swiss Convenience - the Bucket.



French Convenience - le Commode.



Dutch Convenience - the Lake.

NATIONAL CONVENIENCES.

“NATIONAL CONVENIENCES”
by James Gillray 1796



“NATIONAL CONVENIENCES”

by James Gillray 1796



“NATIONAL CONVENIENCES”
by James Gillray 1796



“NATIONAL CONVENIENCES”

by James Gillray 1796



“NATIONAL CONVENIENCES”

by James Gillray 1796

Waste Disposal - Nightmen

For information on the fascinating subject of Human Waste Disposal during the 18th Century, we kindly direct you to the slideshow “Nightmen & Chimney Sweeps” which can be found at:

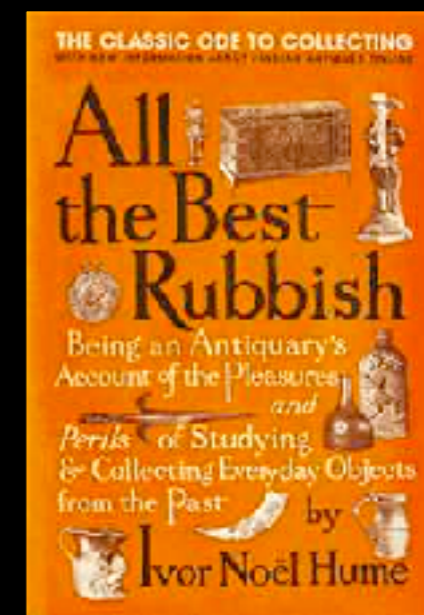
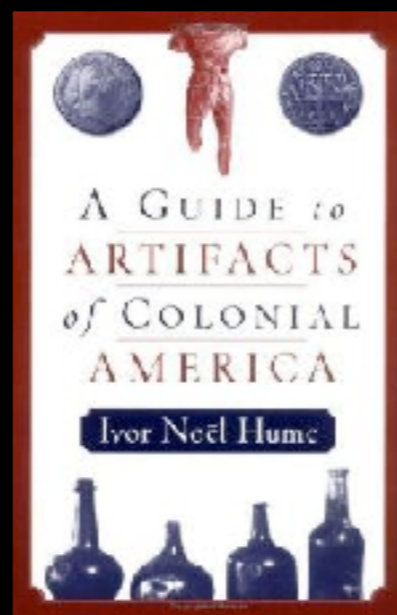
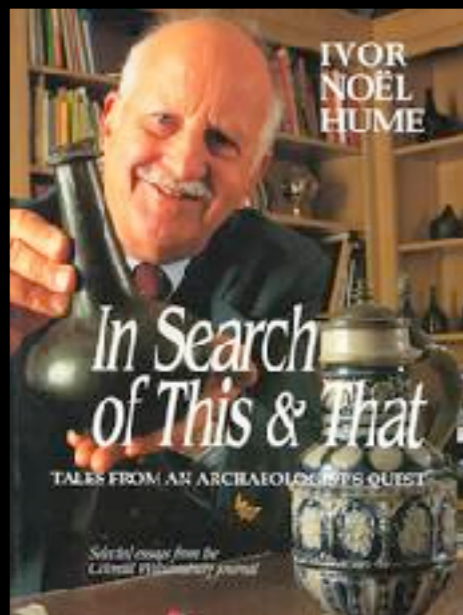
<https://www.scribd.com/doc/256155496/Trades-Occupations-Nightmen-Chimney-Sweeps>

18th Century Material Culture
Nightmen & Chimney Sweeps



Acknowledgements

The 18th Century Material Culture Resource Center greatly acknowledges the work and writings of Noël Hume. Many of the chamber pots depicted in this slideshow have been described in his studies or are his personal property. For more information on period chamber pots and other archeological findings of interest, we highly recommend you reference his wonderful articles and books.



Acknowledgements

The material contained within these slideshows is presented for educational purposes only. The 18th Century Material Culture Resource Center does not personally own any of the items depicted herein and is indebted to the countless museums, libraries, and private collectors who willingly share their collections with the public through the internet. Every attempt has been made to credit these organizations and individuals for their contributions as best as possible.

If there is a question you have regarding a particular item featured within a presentation, please contact the 18th Century Material Culture Resource Center and we will try to answer your inquiry as best as possible. If for any reason you feel there is any item that should not be presented here, or if there is an error in any listing, or if you know the source for any item whose credit is unknown, please inform us and we will make sure your concern is addressed as soon as possible.

Thank you!

- The 18th Century Material Culture Resource Center