

18th Century Material Culture

Shirt / Sleeve Buttons I





Recreated 18th Century Shirt & Suit by Neal Hurst
Recreated Silver & Black Glass Sleeve Buttons by William Hettinger III
(Photo Courtesy Neal Hurst)



Paired Shirt Buttons to Close the Neck - "Etow Oh Koam" - King of the River Nations in North America
Painted on His Visit to England by Bernard Lens III 1710
(The British Museum)

Gold Sleeve Buttons



American Gold Sleeve Buttons from Boston, Massachusetts

c. 1720 - 1750
(Winterthur)



American Gold Sleeve Buttons from Boston, Massachusetts
by James Butler c. 1751 - 1776
(Winterthur)



American Gold Sleeve Buttons from Boston, Massachusetts
by James Butler c. 1751 - 1776
(Winterthur)



American Gold Sleeve Buttons from Exeter, Rhode Island
by Samuel Casey c. 1750
(Museum of Fine Arts, Boston)



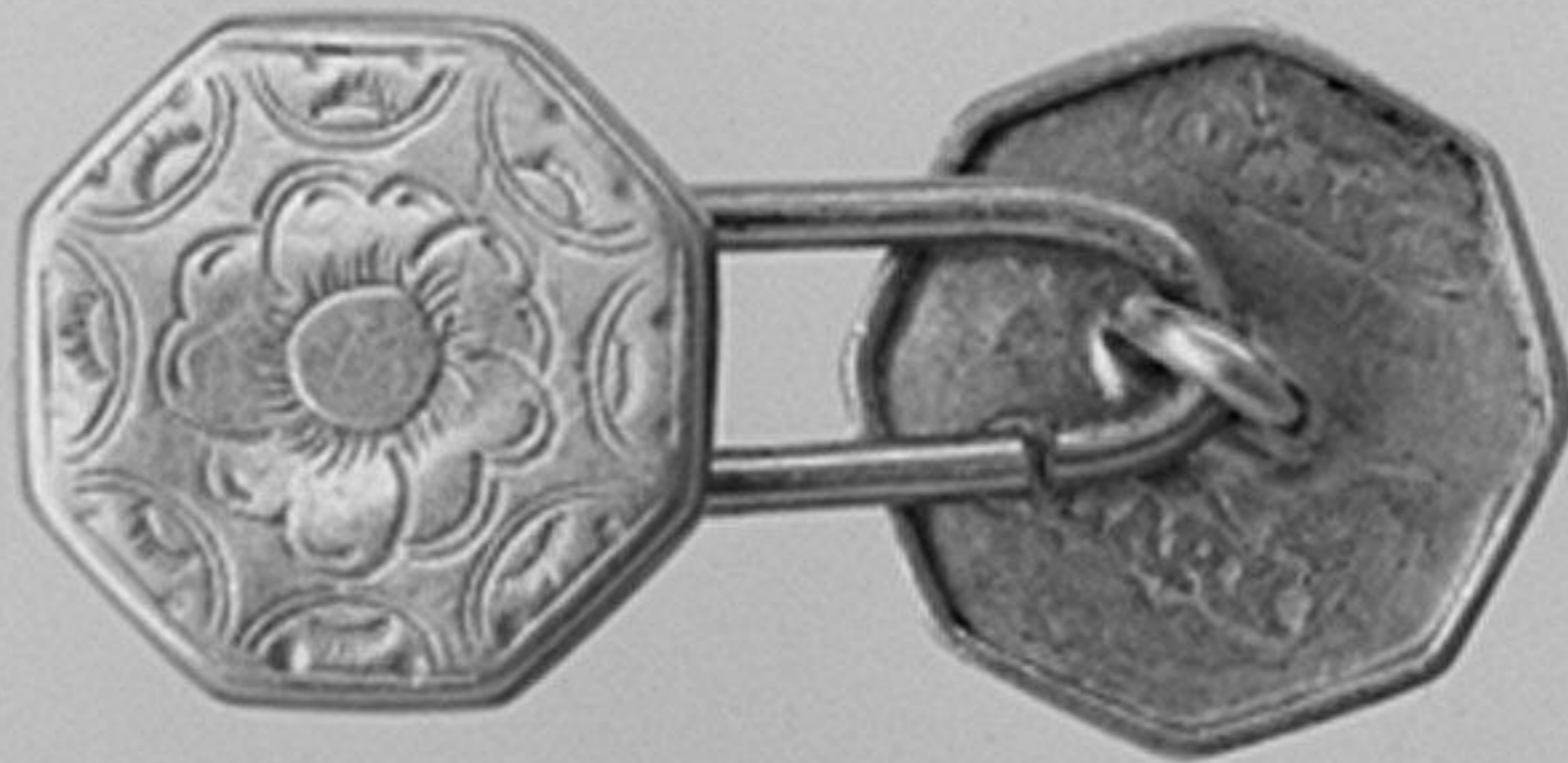
American Gold Sleeve Buttons from Boston, Massachusetts

c. 1750

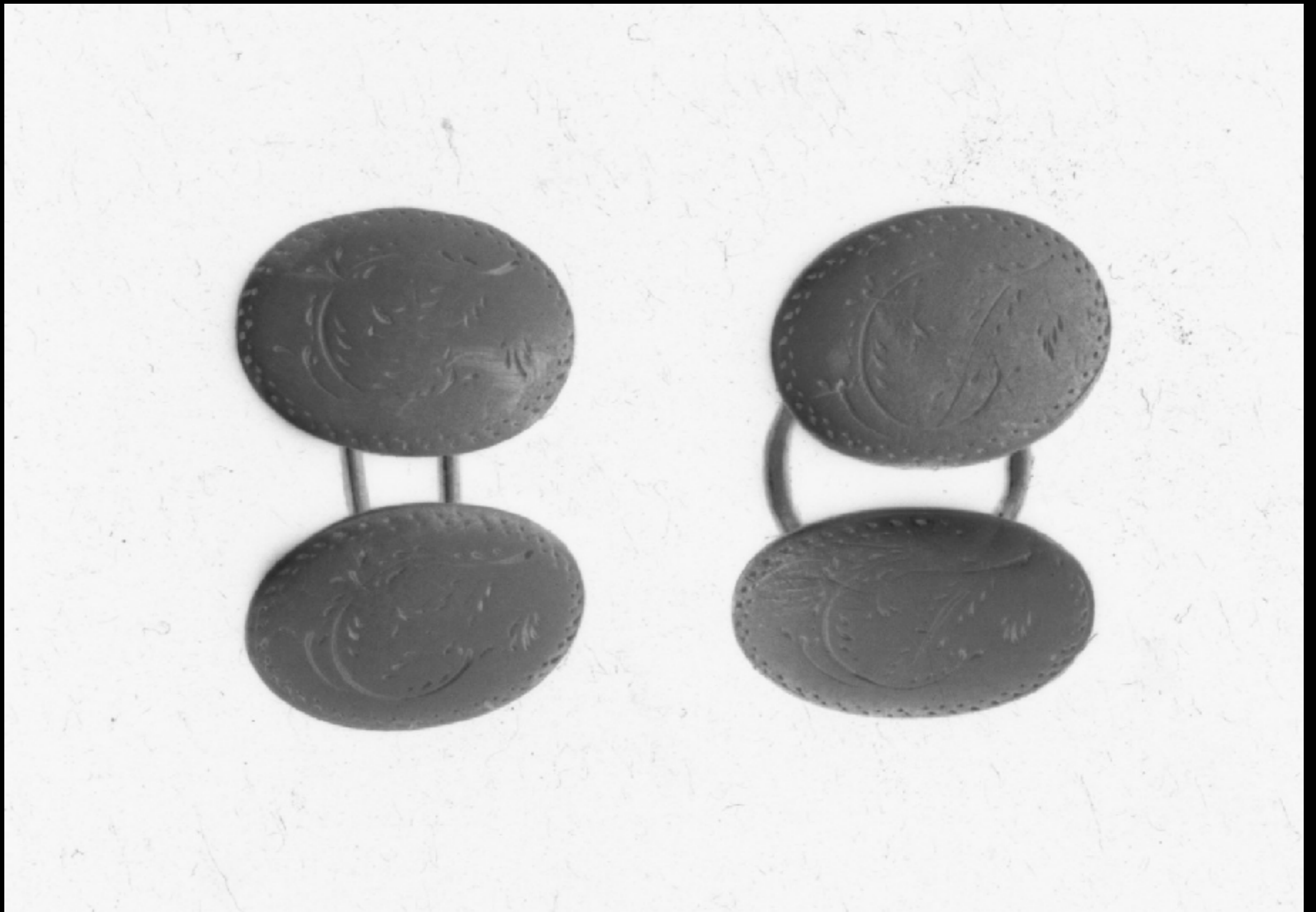
(Museum of Fine Arts, Boston)



American Gold Sleeve Buttons from Boston, Massachusetts, on a Child's Linen Shirt
c. 1764
(Museum of Fine Arts, Boston)



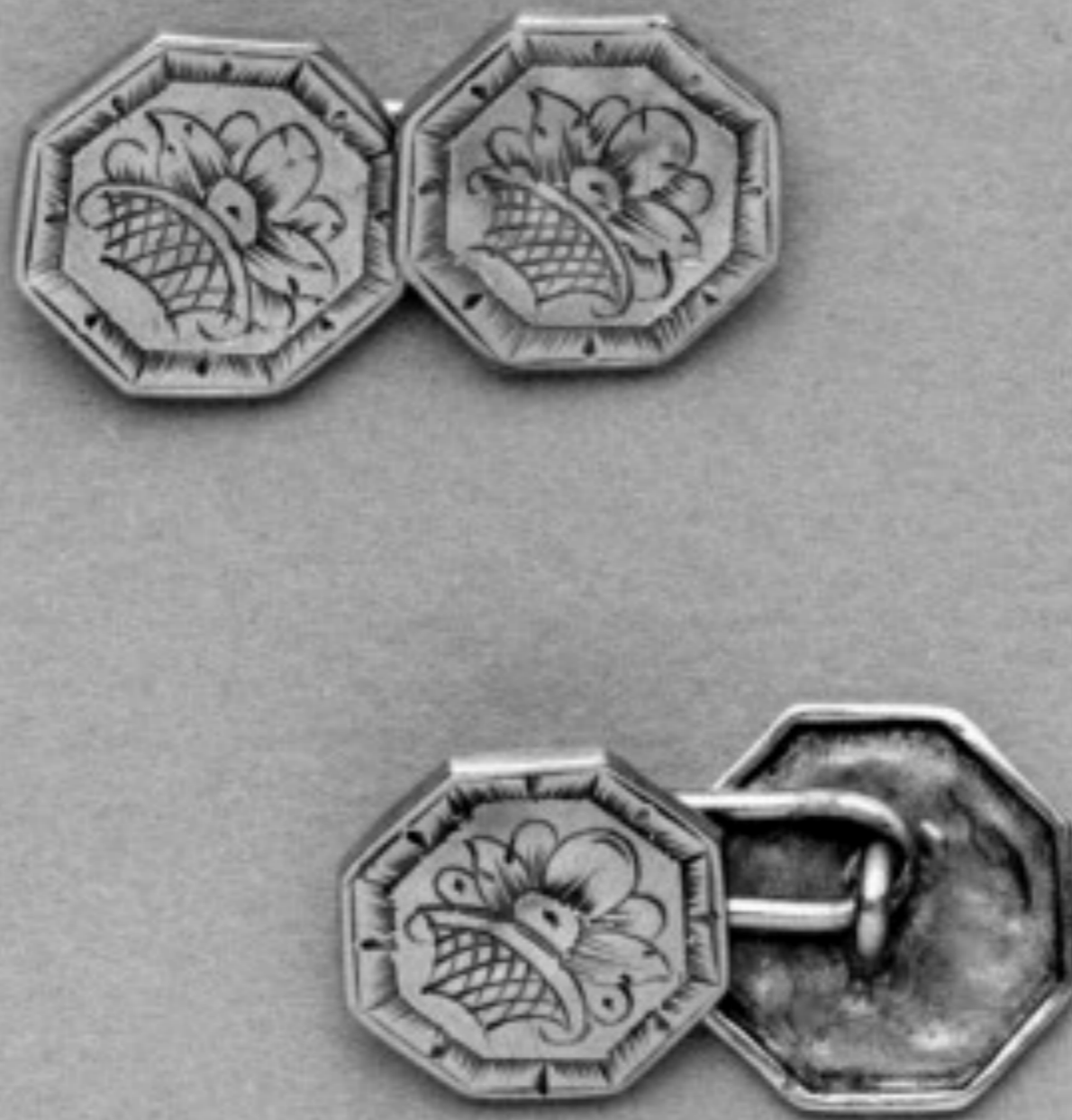
American Gold Sleeve Buttons from Newport, Rhode Island
Probably by Jonathan Clark (1705 - 1770) c. 1740
(Metropolitan Museum of Art)



American Gold Sleeve Buttons from Newport, Rhode Island
by Daniel Rogers c. 1770 - 1792
(Metropolitan Museum of Art)



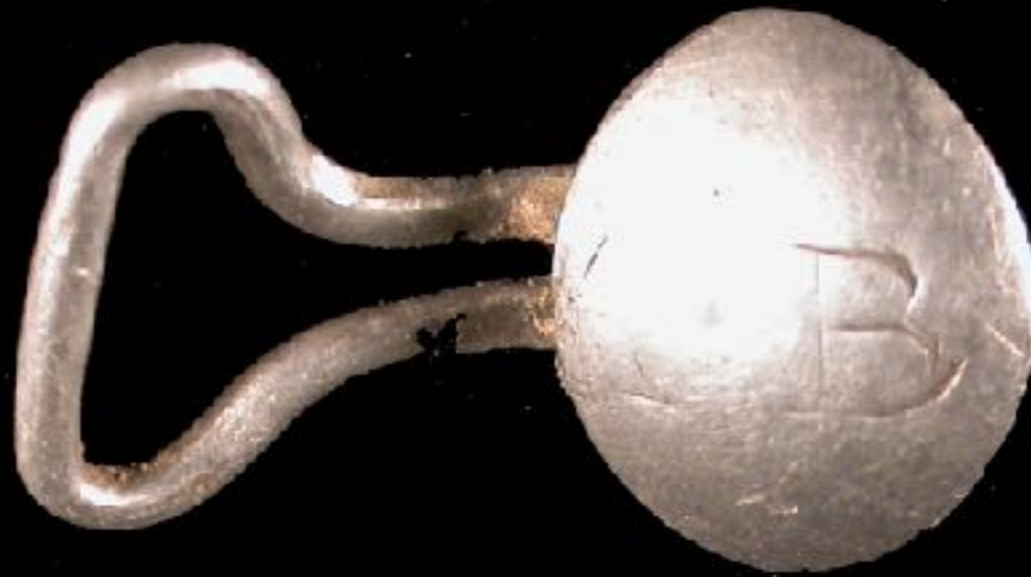
American Gold Sleeve Buttons from Boston, Massachusetts
by William Simpkins c. 1750
(Metropolitan Museum of Art)



American Gold Sleeve Buttons from Boston, Massachusetts
by Jonathan Otis c. 1745 - 1770
(Museum of Fine Arts, Houston)

Silver Sleeve Buttons

cmms



English Silver Alloy Sleeve Button
Late 17th Century
(Portable Antiquities Scheme / Colchester Museums)



English Silver Alloy Gas Back Sleeve Buttons
Late 17th Century
(Portable Antiquities Scheme / Norfolk County Council)



cm



English Silver Alloy Gas Back Sleeve Buttons
Late 17th Century
(Portable Antiquities Scheme / Norfolk County Council)



English Silver Alloy Gas Back Sleeve Buttons
Late 17th Century
(Portable Antiquities Scheme / Somerset County Council)



cms

cms

English Silver Alloy Gas Back Sleeve Buttons
Late 17th Century
(Portable Antiquities Scheme / The British Museum)



English Silver Alloy Gas Back Sleeve Buttons
Late 17th Century
(Portable Antiquities Scheme / Surrey County Council)



English Silver Alloy Sleeve Buttons
Late 17th Century
(Portable Antiquities Scheme / Museum of London)



cm

English Silver Alloy Sleeve Buttons

c. 1650 - 1720

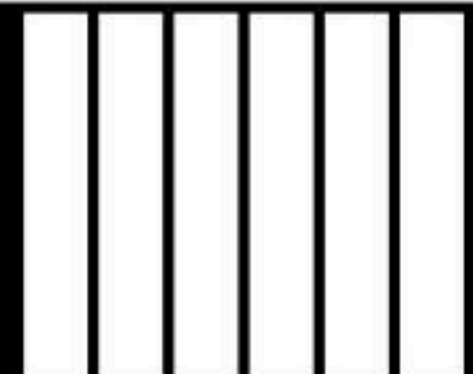
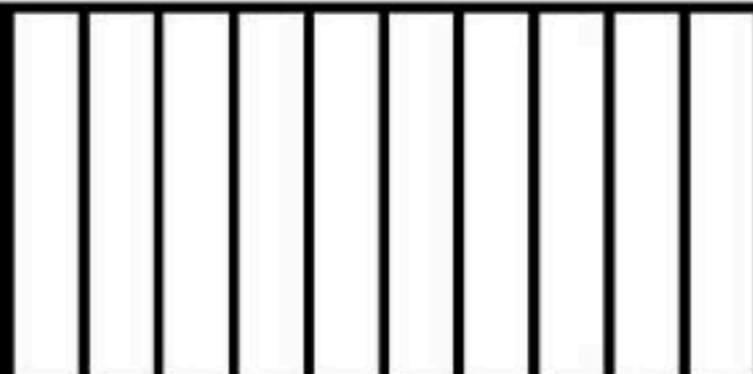
(Portable Antiquities Scheme / Colchester and Ipswich Museum Service)



English Silver Alloy Sleeve Button
Late 17th Century
(Portable Antiquities Scheme / Sussex Archaeological Society)



cm



English Silver Alloy Sleeve Button or Button
Late 17th Century - Early 18th Century
(Portable Antiquities Scheme / Somerset County Council)



cms

cms

English Silver Alloy Sleeve Button

c. 1650 - 1720

(Portable Antiquities Scheme / Northamptonshire County Council)



English Silver Alloy Sleeve Button
c. 1725 - 1800
(Portable Antiquities Scheme / Isle of Wight Council)



English Silver Alloy Sleeve Buttons
c. 1700 - 1800
(Portable Antiquities Scheme / Birmingham Museums Trust)



English Silver Alloy Sleeve Buttons
18th Century
(Museum of London)



English Silver Alloy Sleeve Buttons
18th Century
(Museum of London)



English Silver Alloy Sleeve Buttons
18th Century
(Museum of London)



English Silver Alloy Sleeve Buttons
18th Century
(Museum of London)



English Silver Alloy Sleeve Buttons
18th Century
(Museum of London)



English Silver Alloy Sleeve Buttons
c. 1725 - 1800
(Portable Antiquities Scheme / Sussex Archaeological Society)



English Silver Alloy Sleeve Buttons
c. 1700 - 1800
(Portable Antiquities Scheme / Isle of Wight Council)



English Silver Alloy Sleeve Button
c. 1725 - 1800
(Portable Antiquities Scheme / Isle of Wight Council)



English Silver Alloy Sleeve Button
c. 1725 - 1800
(Portable Antiquities Scheme / Isle of Wight Council)



English Silver Alloy Sleeve Buttons
c. 1700 - 1800
(Portable Antiquities Scheme / Bristol City Council)



English Silver Alloy Sleeve Button
Late 17th - Mid 18th Century
(Portable Antiquities Scheme / Winchester Museum Service)



English Silver Alloy Sleeve Buttons

c. 1750 - 1800

(Portable Antiquities Scheme / Northamptonshire County Council)



English Silver Alloy Sleeve Button
c. 1700 - 1800
(Portable Antiquities Scheme / The British Museum)



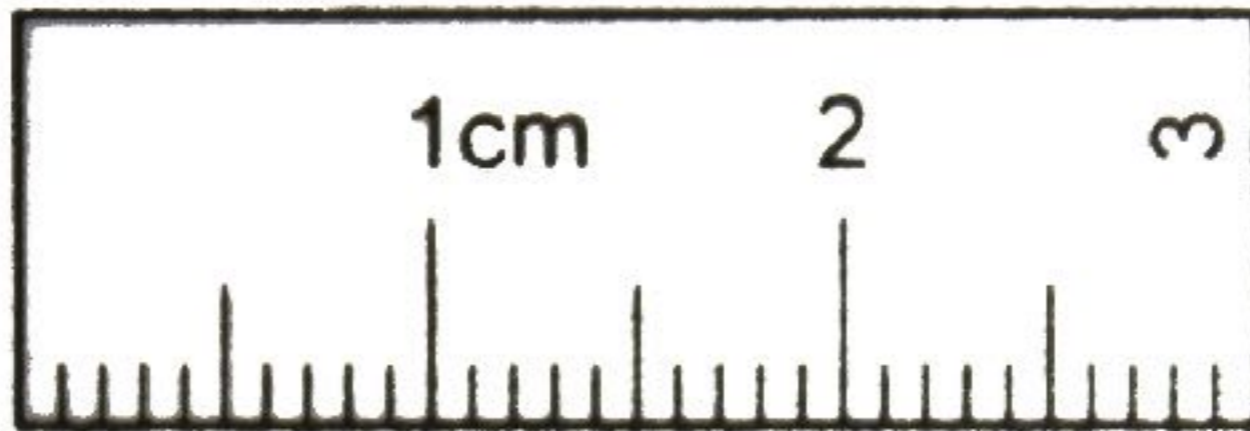
English Silver Alloy Sleeve Buttons
c. 1725 - 1800
(Portable Antiquities Scheme / The British Museum)



English Silver Alloy Sleeve Buttons
18th Century
(Museum of London)



English Silver Alloy Sleeve Buttons
c. 1725 - 1800
(Portable Antiquities Scheme / Norfolk County Council)



English Silver Alloy Sleeve Buttons

c. 1725 - 1800

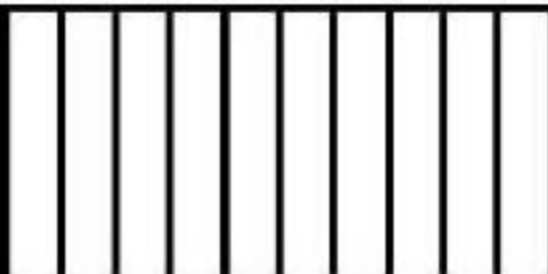
(Portable Antiquities Scheme / Cambridgeshire County Council)



cm



cm



English Silver Alloy Sleeve Buttons
c. 1725 - 1800
(Portable Antiquities Scheme / Mike Walker)



English Silver Alloy Sleeve Buttons
c. 1725 - 1800
(Portable Antiquities Scheme / Surrey County Council)



English Silver Alloy Sleeve Buttons

c. 1725 - 1800

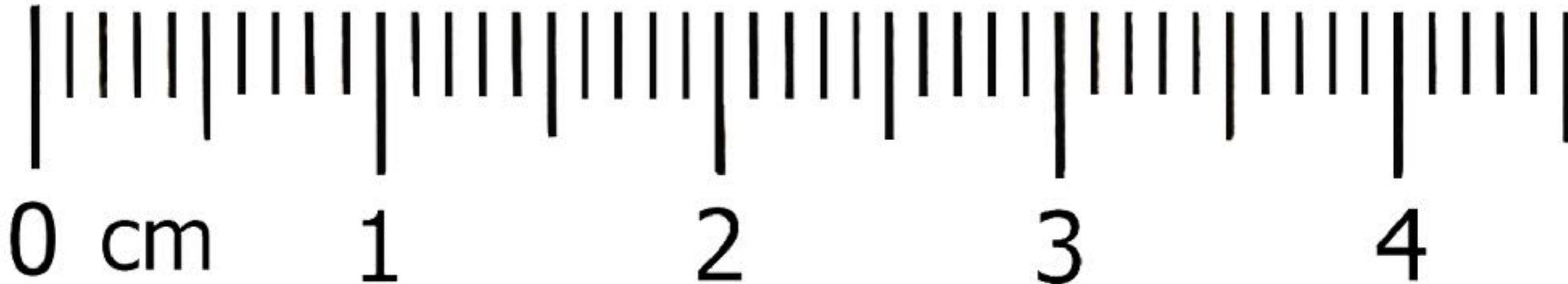
(Portable Antiquities Scheme / West Yorkshire Archaeology Advisory Service)



English Silver Alloy Sleeve Buttons

c. 1725 - 1800

(Portable Antiquities Scheme / West Yorkshire Archaeology Advisory Service)



English Silver Alloy Sleeve Button

c. 1725 - 1800

(Portable Antiquities Scheme / Birmingham Museums Trust)



English Silver Alloy Sleeve Buttons
c. 1725 - 1800
(Portable Antiquities Scheme / The British Museum)



English Silver Alloy Sleeve Buttons
c. 1720 - 1800
(Portable Antiquities Scheme / The British Museum)



English Silver Alloy Sleeve Buttons

c. 1720 - 1800

(Portable Antiquities Scheme / Surrey County Council)



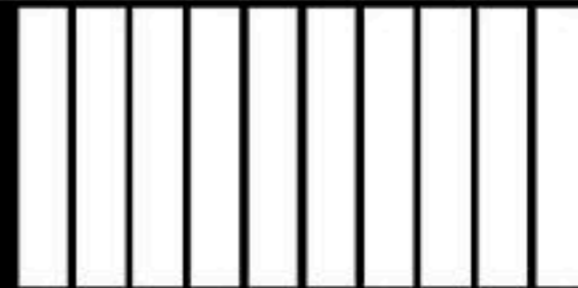
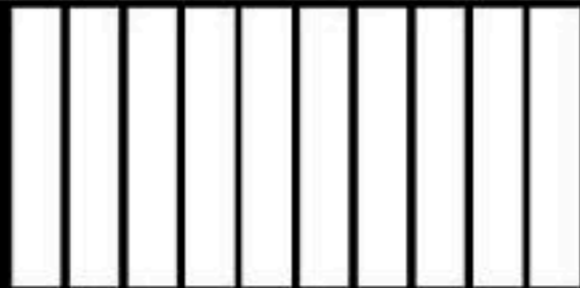
English Silver Alloy Sleeve Buttons
c. 1720 - 1800
(Portable Antiquities Scheme / The British Museum)



English Silver Alloy Sleeve Buttons
c. 1720 - 1800
(Portable Antiquities Scheme / Birmingham Museums Trust)



cm



English Silver Alloy Sleeve Button
c. 1720 - 1800
(Portable Antiquities Scheme / The British Museum)



English Silver Alloy Sleeve Button
c. 1720 - 1800
(Portable Antiquities Scheme / The British Museum)



cms

English Silver Alloy Sleeve Button
c. 1720 - 1800
(Portable Antiquities Scheme / The British Museum)



English Silver Alloy Sleeve Button
c. 1720 - 1800
(Portable Antiquities Scheme / Suffolk County Council)



cms



cms



English Silver Alloy Sleeve Button
c. 1725 - 1800
(Portable Antiquities Scheme / Museum of London)



English Silver Alloy Sleeve Button
c. 1725 - 1800
(Portable Antiquities Scheme / The British Museum)



cms

cms

English Silver Alloy Sleeve Button

c. 1725 - 1800

(Portable Antiquities Scheme / Leicestershire County Council)



English Silver Alloy Sleeve Buttons

c. 1725 - 1800

(Portable Antiquities Scheme / Salisbury and South Wiltshire Museum)



cms

cms

English Silver Alloy Sleeve Buttons
c. 1725 - 1800
(Portable Antiquities Scheme / Museum of London)



English Silver Alloy Sleeve Buttons
c. 1725 - 1800
(Portable Antiquities Scheme / Colchester Museums)



English Silver Alloy Sleeve Button

c. 1725 - 1800

(Portable Antiquities Scheme / Sussex Archaeological Society)



English Silver Alloy Sleeve Button
c. 1725 - 1800
(Portable Antiquities Scheme / The British Museum)



cms

cms

English Silver Alloy Sleeve Buttons
c. 1725 - 1800
(Portable Antiquities Scheme / Northamptonshire County Council)



English Silver Alloy Sleeve Buttons
c. 1725 - 1800
(Portable Antiquities Scheme / Colchester Museums)



English Silver Alloy Sleeve Buttons
c. 1725 - 1800
(Portable Antiquities Scheme / The British Museum)



English Silver Alloy Sleeve Buttons
18th Century
(Museum of London)



English Silver Alloy Sleeve Buttons

c. 1770 - 1800

(Winterthur)



English Silver & Steel Alloy Sleeve Buttons
c. 1725 - 1800
(Portable Antiquities Scheme / : North Lincolnshire Museum)

cms



cms



English Silver Alloy Sleeve Button
c. 1725 - 1800
(Portable Antiquities Scheme / Isle of Wight Council)



cms

cms

English Silver Alloy Sleeve Button
c. 1725 - 1800
(Portable Antiquities Scheme / Isle of Wight Council)



English Silver Alloy Sleeve Buttons
18th Century
(Museum of London)



English Silver Alloy Sleeve Buttons
18th Century
(Museum of London)



American Silver Alloy Sleeve Button from Philadelphia, Pennsylvania
by Francis Richardson c. "1700 - 1800"
(Winterthur)

Copper Alloy Sleeve Buttons



English Copper Alloy Sleeve Button
18th Century
(Museum of London)



English Copper Alloy Sleeve Button
18th Century
(Museum of London)



English Copper Alloy Sleeve Button
18th Century
(Museum of London)



English Copper Alloy Sleeve Buttons
18th Century
(Museum of London)



English Copper Alloy Sleeve Buttons
18th Century
(Museum of London)



English Copper Alloy Sleeve Buttons
18th Century
(Museum of London)



English Copper Alloy Sleeve Buttons Found at the King's Reach Archeology Site, Maryland
c. 1689 - 1711
(Jefferson Patterson Park & Museum)



English Copper Alloy Sleeve Buttons
18th Century
(Museum of London)



English Copper Alloy Sleeve Button
18th Century
(Museum of London)



English Copper Alloy Sleeve Buttons
18th Century
(Museum of London)



English Copper Alloy Sleeve Buttons
18th Century
(Museum of London)



English Copper Alloy Sleeve Buttons
18th Century
(Museum of London)



English Copper Alloy Sleeve Button
18th Century
(Museum of London)



English Copper Alloy Sleeve Buttons
18th Century
(Museum of London)



English Copper Alloy Sleeve Buttons
18th Century
(Museum of London)



English Copper Alloy Sleeve Button
18th Century
(Museum of London)



English Copper Alloy Sleeve Button
18th Century
(Museum of London)



English Copper Alloy Sleeve Button
18th Century
(Museum of London)



English Copper Alloy Sleeve Buttons
18th Century
(Museum of London)



English Copper Alloy Sleeve Buttons
18th Century
(Museum of London)



English Copper Alloy Sleeve Button
18th Century
(Museum of London)



English Copper Alloy Sleeve Button
18th Century
(Museum of London)



English Copper Alloy Sleeve Button
18th Century
(Museum of London)



English Copper Alloy Sleeve Button
18th Century
(Museum of London)



English Copper Alloy Sleeve Buttons
18th Century
(Museum of London)



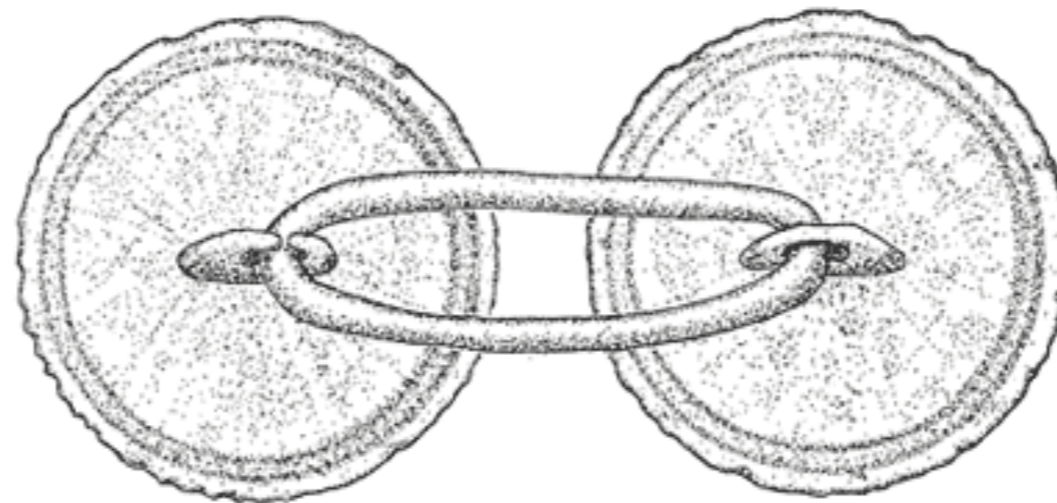
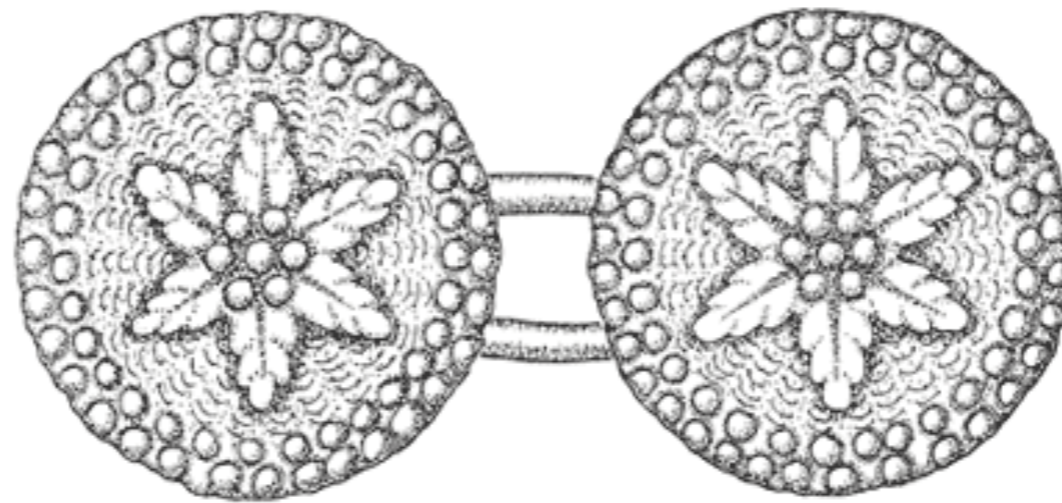
English Copper Alloy Sleeve Button
18th Century
(Museum of London)



English Copper Alloy Sleeve Button
18th Century
(Museum of London)



English Copper Alloy Sleeve Buttons
18th Century
(Museum of London)



2006.33.154

3:1

Gilded Copper Sleeve Buttons Recovered from the Wreck of a Mercantile Ship Bound for Philadelphia
Sunk off Lewes Beach, Delaware c. 1762 - 1775
(State of Delaware)



English Copper Alloy Sleeve Buttons
18th Century
(Museum of London)



English Copper Alloy Sleeve Buttons
18th Century
(Museum of London)



English Copper Alloy Sleeve Buttons
18th Century
(Museum of London)



English Copper Alloy Sleeve Buttons
18th Century
(Museum of London)



English Copper Alloy Sleeve Button
18th Century
(Museum of London)



English Copper Alloy Sleeve Button
18th Century
(Museum of London)



English Copper Alloy Sleeve Buttons
18th Century
(Museum of London)



English Copper Alloy Sleeve Button
18th Century
(Museum of London)



English Copper Alloy Sleeve Button
18th Century
(Museum of London)



English Copper Alloy Sleeve Button
18th Century
(Museum of London)



English Copper Alloy Sleeve Buttons
18th Century
(Museum of London)



English Copper Alloy Sleeve Buttons
18th Century
(Museum of London)



English Copper Alloy Sleeve Buttons
18th Century
(Museum of London)



English Copper Alloy Sleeve Buttons
18th Century
(Museum of London)



English Copper Alloy Sleeve Button
18th Century
(Museum of London)



English Copper Alloy Sleeve Buttons
18th Century
(Museum of London)



English Copper Alloy Sleeve Buttons
18th Century
(Museum of London)



English Copper Alloy Sleeve Buttons
18th Century
(Museum of London)



English Copper Alloy Sleeve Button
18th Century
(Museum of London)



English Copper Alloy Sleeve Button
18th Century
(Museum of London)



English Copper Alloy Sleeve Button
18th Century
(Museum of London)



English Copper Alloy Sleeve Buttons
18th Century
(Museum of London)



English Copper Alloy Sleeve Button
18th Century
(Museum of London)



English Copper Alloy Sleeve Buttons
18th Century
(Museum of London)



English Copper Alloy Sleeve Buttons
18th Century
(Museum of London)



English Copper Alloy Sleeve Buttons
18th Century
(Museum of London)



English Copper Alloy Sleeve Buttons
18th Century
(Museum of London)



English Copper Alloy Sleeve Buttons
18th Century
(Museum of London)



English Copper Alloy Sleeve Buttons
18th Century
(Museum of London)



English Copper Alloy Sleeve Buttons
18th Century
(Museum of London)



English Copper Alloy Sleeve Buttons
18th Century
(Museum of London)



English Copper Alloy Sleeve Button
18th Century
(Museum of London)



English Copper Alloy Sleeve Buttons
18th Century
(Museum of London)



English Copper Alloy Sleeve Button
18th Century
(Museum of London)



English Copper Alloy Sleeve Button
18th Century
(Museum of London)



English Copper Alloy Sleeve Button
18th Century
(Museum of London)



English Copper Alloy Sleeve Button
18th Century
(Museum of London)



English Copper Alloy Sleeve Button
18th Century
(Museum of London)



English Copper Alloy Sleeve Button
18th Century
(Museum of London)



English Copper Alloy Sleeve Button
18th Century (?)
(Museum of London)



English Copper Alloy Sleeve Buttons
18th Century
(Museum of London)



English Copper Alloy Sleeve Buttons
18th Century
(Museum of London)



English Copper Alloy Sleeve Buttons
18th Century
(Museum of London)



English Copper Alloy Sleeve Button
18th Century
(Museum of London)



English Copper Alloy Sleeve Button
18th Century
(Museum of London)



English Copper Alloy Sleeve Button
18th Century
(Museum of London)



English Copper Alloy Sleeve Buttons
18th Century
(Museum of London)



English Copper Alloy Sleeve Buttons
18th Century
(Museum of London)



English Copper Alloy Sleeve Buttons
18th Century
(Museum of London)



English Copper Alloy Sleeve Button
18th Century
(Museum of London)



English Copper Alloy Sleeve Buttons
18th Century
(Museum of London)



English Copper Alloy Sleeve Buttons
18th Century
(Museum of London)



English Copper Alloy Sleeve Buttons
18th Century
(Museum of London)



English Copper Alloy Sleeve Button
18th Century
(Museum of London)



English Copper Alloy Sleeve Button
18th Century
(Museum of London)



English Copper Alloy Sleeve Button
18th Century
(Museum of London)



English Copper Alloy Sleeve Buttons
18th Century
(Museum of London)



English Copper Alloy Sleeve Buttons
18th Century
(Museum of London)



English Copper Alloy Sleeve Buttons
18th Century
(Museum of London)



English Copper Alloy Sleeve Button
18th Century
(Museum of London)



English Copper Alloy Sleeve Buttons
c. 1700 - 1800
(Portable Antiquities Scheme / The British Museum)



English Copper Alloy Sleeve Button
18th Century
(Museum of London)



English Copper Alloy Sleeve Buttons
18th Century
(Museum of London)



English Copper Alloy Sleeve Button
18th Century
(Museum of London)



English Copper Alloy Sleeve Button
18th Century
(Museum of London)



English Copper Alloy Sleeve Buttons
18th Century
(Museum of London)



English Copper Alloy Sleeve Button
18th Century
(Museum of London)



English Copper Alloy Sleeve Button
18th Century
(Museum of London)



English Copper Alloy Sleeve Button
18th Century
(Museum of London)



English Copper Alloy Sleeve Button
18th Century
(Museum of London)



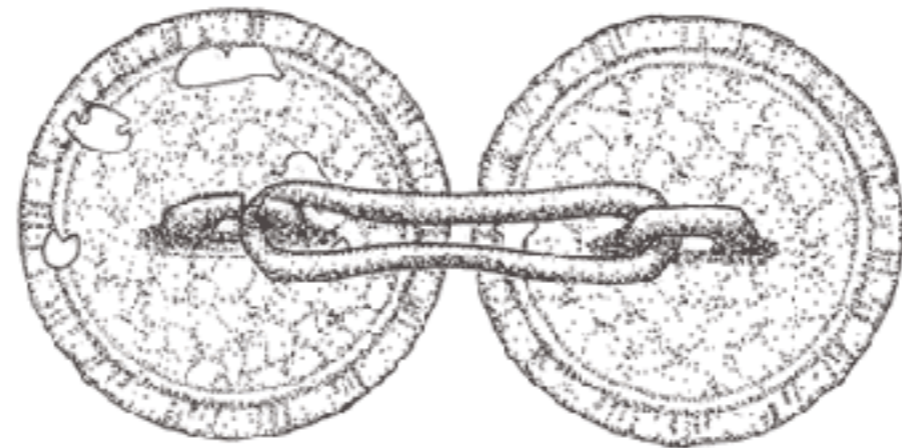
English Copper Alloy Sleeve Button
18th Century
(Museum of London)



English Copper Alloy Sleeve Button
18th Century
(Museum of London)



English Copper Alloy Sleeve Buttons
18th Century
(Museum of London)



Sleeve Buttons Recovered from the Wreck of a Mercantile Ship Bound for Philadelphia
Sunk off Lewes Beach, Delaware c. 1762 - 1775
(State of Delaware)



English Copper Alloy Sleeve Button
18th Century
(Museum of London)



English Copper Alloy Sleeve Buttons
18th Century
(Museum of London)



English Copper Alloy Sleeve Buttons
18th Century
(Museum of London)



English Copper Alloy Sleeve Button
18th Century
(Museum of London)



English Copper Alloy Sleeve Button
18th Century
(Museum of London)



English Copper Alloy Sleeve Button
18th Century
(Museum of London)



English Copper Alloy Sleeve Button
18th Century
(Museum of London)



English Copper Alloy Sleeve Buttons
18th Century
(Museum of London)



English Copper Alloy Sleeve Buttons
18th Century
(Museum of London)



English Copper Alloy Sleeve Buttons
18th Century
(Museum of London)



English Copper Alloy Sleeve Button
18th Century
(Museum of London)



English Copper Alloy Sleeve Button
18th Century
(Museum of London)



English Copper Alloy Sleeve Button
18th Century
(Museum of London)



English Copper Alloy Sleeve Button
18th Century
(Museum of London)



English Copper Alloy Sleeve Button
18th Century
(Museum of London)



English Copper Alloy Sleeve Button
18th Century
(Museum of London)



English Copper Alloy Sleeve Button
18th Century
(Museum of London)



English Copper Alloy Sleeve Buttons
18th Century
(Museum of London)



English Copper Alloy Sleeve Buttons
18th Century
(Museum of London)



English Copper Alloy Sleeve Buttons
18th Century
(Museum of London)



English Copper Alloy Sleeve Buttons
18th Century
(Museum of London)



English Copper Alloy Sleeve Buttons
18th Century
(Museum of London)



English Copper Alloy Sleeve Buttons
18th Century
(Museum of London)



English Copper Alloy Sleeve Buttons
18th Century
(Museum of London)



English Copper Alloy Sleeve Button
18th Century
(Museum of London)



English Copper Alloy Sleeve Buttons
18th Century
(Museum of London)



English Copper Alloy Sleeve Buttons
18th Century
(Museum of London)



English Copper Alloy Sleeve Button
18th Century
(Museum of London)



English Copper Alloy Sleeve Button
18th Century
(Museum of London)



English Copper Alloy Sleeve Button
18th Century
(Museum of London)



English Copper Alloy Sleeve Button
18th Century
(Museum of London)



English Copper Alloy Sleeve Button
18th Century
(Museum of London)



English Copper Alloy Sleeve Button
18th Century
(Museum of London)



English Copper Alloy Sleeve Button
18th Century
(Museum of London)



English Copper Alloy Sleeve Button
18th Century
(Museum of London)



English Copper Alloy Sleeve Button
18th Century
(Museum of London)



English Copper & Lead Alloy Sleeve Button
18th Century
(Museum of London)



English Copper Alloy Sleeve Buttons Found at the King's Reach Archeology Site, Maryland
c. 1689 - 1711
(Jefferson Patterson Park & Museum)



English Copper Alloy Sleeve Button
18th Century
(Museum of London)



English Copper Alloy Sleeve Button
18th Century
(Museum of London)



English Copper Alloy Sleeve Button
18th Century
(Museum of London)



English Copper Alloy Sleeve Buttons
18th Century
(Museum of London)



English Copper Alloy Sleeve Buttons
18th Century
(Museum of London)



English Copper Alloy Sleeve Button
18th Century
(Museum of London)



English Copper Alloy Sleeve Buttons
18th Century
(Museum of London)



English Copper Alloy Sleeve Buttons
18th Century
(Museum of London)



English Copper Alloy Sleeve Button
18th Century
(Museum of London)



English Copper Alloy Sleeve Button
18th Century
(Museum of London)



English Copper Alloy Sleeve Button
18th Century
(Museum of London)



English Copper Alloy Sleeve Button
18th Century
(Museum of London)



English Copper & Lead Alloy Sleeve Button
18th Century
(Museum of London)



English Copper Alloy Sleeve Button
18th Century
(Museum of London)



English Copper Alloy Sleeve Buttons
c. 1750 - 1850
(Portable Antiquities Scheme / York Museums Trust)



English Copper Alloy Sleeve Buttons
18th Century
(Museum of London)



Copper Alloy Sleeve Buttons Found at Fort Dobbs, Piedmont Region, North Carolina

c. 1750

(Fort Dobbs - Photo Courtesy Scott Douglas)



English Copper Alloy Sleeve Button
c. 1600 - 1800
(Portable Antiquities Scheme / North Lincolnshire Museum)



English Copper Alloy Sleeve Buttons
18th Century
(Museum of London)



English Copper Alloy Sleeve Buttons
18th Century
(Museum of London)



English Copper Alloy Sleeve Buttons
18th Century
(Museum of London)



English Copper Alloy Sleeve Buttons
18th Century
(Museum of London)



English Copper Alloy Sleeve Button
18th Century
(Museum of London)



English Copper Alloy Sleeve Buttons
18th Century
(Museum of London)



English Copper Alloy Sleeve Button
18th Century
(Museum of London)



English Copper Alloy Sleeve Buttons
18th Century
(Museum of London)



English Copper Alloy Sleeve Button
18th Century
(Museum of London)



English Copper Alloy Sleeve Buttons
18th Century
(Museum of London)



English Copper Alloy Sleeve Buttons
18th Century
(Museum of London)



English Copper Alloy Sleeve Button
18th Century
(Museum of London)



English Copper Alloy Sleeve Buttons
18th Century
(Museum of London)



English Copper Alloy Sleeve Buttons
18th Century
(Museum of London)



English Copper Alloy Sleeve Buttons
18th Century
(Museum of London)



English Copper Alloy Sleeve Buttons
18th Century
(Museum of London)



English Copper Alloy Sleeve Buttons
18th Century
(Museum of London)



English Copper Alloy Sleeve Buttons
18th Century
(Museum of London)



English Copper Alloy Sleeve Buttons
18th Century
(Museum of London)



English Copper Alloy Sleeve Button
18th Century
(Museum of London)



English Copper Alloy Sleeve Button
18th Century
(Museum of London)



English Copper Alloy Sleeve Buttons
18th Century
(Museum of London)



English Copper Alloy Sleeve Buttons
18th Century
(Museum of London)



English Copper Alloy Sleeve Buttons
18th Century
(Museum of London)



English Copper Alloy Sleeve Buttons
18th Century
(Museum of London)



English Copper Alloy Sleeve Button
18th Century
(Museum of London)



English Copper Alloy Sleeve Button
18th Century
(Museum of London)



English Copper Alloy Sleeve Buttons Found in the Thames River
2nd Half 18th Century
(London Mudlark)



English Copper Alloy Sleeve Buttons
18th Century
(Museum of London)



English Copper Alloy Sleeve Button
c. 1750 - 1850
(Portable Antiquities Scheme / Birmingham Museums Trust)



English Copper Alloy Sleeve Button
c. 1750 - 1850
(Portable Antiquities Scheme / Birmingham Museums Trust)



English Copper Alloy Sleeve Buttons
18th Century
(Museum of London)



English Copper Alloy Sleeve Button
18th - Early 19th Century
(Museum of London)



English Copper Alloy Sleeve Button
18th - Early 19th Century
(Museum of London)



English Copper Alloy Sleeve Button
18th - Early 19th Century
(Museum of London)



English Copper Alloy Sleeve Buttons
Late 18th - Early 19th Century
(Museum of London)



English Copper Alloy Sleeve Buttons
18th Century
(Museum of London)



English Copper Alloy Sleeve Buttons
18th Century
(Museum of London)



English Copper Alloy Sleeve Buttons
18th Century
(Museum of London)



English Copper Alloy Sleeve Buttons
18th Century
(Museum of London)



English Copper Alloy Sleeve Buttons
Late 18th - Early 19th Century
(Museum of London)



English Copper Alloy Sleeve Buttons
18th Century
(Museum of London)



English Copper Alloy Sleeve Buttons
18th Century
(Museum of London)



English Copper Alloy Sleeve Button
18th Century
(Museum of London)



English Copper Alloy Sleeve Button
18th Century
(Museum of London)



English Copper Alloy Sleeve Button
18th Century
(Museum of London)



English Copper Alloy Sleeve Buttons
18th Century
(Museum of London)



English Copper Alloy Sleeve Button
18th - Early 19th Century
(Museum of London)

Lead Alloy Sleeve Buttons



English Lead Alloy Sleeve Button
18th Century
(Museum of London)



English Lead Alloy Sleeve Button
18th Century
(Museum of London)



English Lead Alloy Sleeve Button
18th Century
(Museum of London)



English Lead Alloy Sleeve Button
18th Century
(Museum of London)



English Lead Alloy Sleeve Button
18th Century
(Museum of London)



English Lead Alloy Sleeve Button
18th Century
(Museum of London)



English Lead Alloy Sleeve Button
18th Century
(Museum of London)



English Lead Alloy Sleeve Button
18th Century
(Museum of London)



English Lead Alloy Sleeve Buttons
18th Century
(Museum of London)



English Lead Alloy Sleeve Button
18th Century
(Museum of London)



English Lead Alloy Sleeve Buttons
18th Century
(Museum of London)



English Lead Alloy Sleeve Button
18th Century
(Museum of London)



English Lead Alloy Sleeve Buttons
18th Century
(Museum of London)



English Lead Alloy Sleeve Button
18th Century
(Museum of London)



English Lead Alloy Sleeve Button
18th Century
(Museum of London)



English Lead Alloy Sleeve Button
18th Century
(Museum of London)



English Lead Alloy Sleeve Buttons
18th Century
(Museum of London)



English Lead Alloy Sleeve Button
18th Century
(Museum of London)



English Lead Alloy Sleeve Button
18th Century
(Museum of London)



English Lead Alloy Sleeve Button
18th Century
(Museum of London)



English Lead Alloy Sleeve Buttons
18th Century
(Museum of London)

Tin Alloy Sleeve Buttons



cms



cms



English Tin Alloy Sleeve Buttons
c. 1725 - 1800
(Portable Antiquities Scheme / York Museums Trust)



English Silvered Tin Alloy Sleeve Buttons
c. 1750 - 1800
(Portable Antiquities Scheme / Birmingham Museums Trust)

Acknowledgements

Without the help of our friends who generously support us with their research and materials, none of these slideshows would be possible. We would like to personally thank and recognize Paul Dickfoss, William Hettinger III, Adam Hodges - LeClaire, Neal Hurst, James Mullins, Ward Oles, and Steven Rayner for their contributions to this edition.

We would like to personally thank Ward Oles for his many contributions and suggestions to this slideshow, particularly regarding the section of Commemorative Sleeve Buttons.

Acknowledgements

The material contained within these slideshows is presented for educational purposes only. The 18th Century Material Culture Resource Center does not personally own any of the items depicted herein and is indebted to the countless museums, libraries, and private collectors who willingly share their collections with the public through the internet. Every attempt has been made to credit these organizations and individuals for their contributions as best as possible.

If there is a question you have regarding a particular item featured within a presentation, please contact the 18th Century Material Culture Resource Center and we will try to answer your inquiry as best as possible. If for any reason you feel there is any item that should not be presented here, or if there is an error in any listing, or if you know the source for any item whose credit is unknown, please inform us and we will make sure your concern is addressed as soon as possible.

Thank you!

- The 18th Century Material Culture Resource Center