

18th Century Material Culture

The Lady's Toilette

Beauty Patches & Patch Boxes



Beauty Patches

Beauty Patches

Beauty patches, otherwise known as “Mouches”, were often applied to the skin to mimic beauty spots or to conceal unsightly blemishes, scars or signs of disease. Made of silk, velvet, satin, or taffetta, they were often the finishing touch when applying cosmetics at the toilet.

John Bulwer

“Anthropometamorphosis: Man Transform’d: or, the Artificiall Changling”
2nd Edition (London: William Hunt, 1653)

“they that suppress and smother (their sins) by paintings, and unnaturall helps to unlawfull ends, do not deliver themselves of the plague, but they do hide the markes and infect others, and wrastle against Gods notifications of their former sins. The invention of which Act of Palliation of an ascitious deformity against Gods indigitation of sin, is imagined one reason of the invention of black Patches, wherein the French shewed their witty pride, which could so cunningly turne Botches into Beauty, and make ugliness handsome; yet in point of Phantasticalnesse we may excuse that Nation, as having taken up the fashion, rather for necessity than novelty, in as much as those French Pimples have need of a French Plaister”



Wellcome Images

Face Patches
Late 18th Century
(Wellcome Images)



“A Woman at Her Toilet”
by Johann Eleazar Schenau 1720
(Metropolitan Museum of Art)



Copy done *Printed for*
Thou heavy Fool, that with Prides ardent Rage,
Wouldst fain conceal the furrow'd Marks of Age,
Pride Wouldst thou complais't thy Work, but short's the Task,
Put off thy Patches, and put on thy Mask.
Printed for John Bowles & Son, at the Black Swan in Great.

“Pride”
by John Bowles after Antoine Coypel c. 1753 - 1766
(British Museum)



“Pride”

by John Bowles after Antoine Coypel c. 1753 - 1766
(British Museum)



Girl with a Patch Box
by Philippe Mercier 1760
(National Trust)



Bouche Pinxit.

Petit Sculp.

LE MATIN
La Dame a sa Toilete.

Ces taches Artificielles *Mais en les plaçant mal, on s'expose avec elles*
Donnent aux yeux, au Teint plus de vivacité: *A defigurer la beauté.* M^r Roy.

a Paris chez Petit rue S^t Jacques pres les Mathurins *Avec Privilege du Roy*
et chez la Veuve Chereau aux deux Pilliers d'or

“LE MATIN La Dame a sa Toilete”
by Gilles Edme Petit after François Boucher Mid 18th Century
(Metropolitan Museum of Art)



“LE MATIN La Dame a sa Toilete”
by Gilles Edme Petit after François Boucher Mid 18th Century
(Metropolitan Museum of Art)



A City Taylor's Wife dressing for the Pantheon
Publish'd 5th Feby. 1772 by W. Humphrey, St. Martin's Lane
(Lewis Walpole Library)



"The MACARONI"
by John Bowles 1773
(Lewis Walpole Library)



AGE and FOLLY, or the BEAUTIES.
*Search Court and City, Town and Country round.
Two such Beauties scarce are to be found.*

London. Printed for R. Sayer & J. Bennett, N^o. 53, Fleet-Street.

as the Act directs, 1 Feb. 1776.

397

“AGE and FOLLY, or the BEAUTIES.”
Published by Sayer & Bennett 1776
(The British Museum)



“AGE and FOLLY, or the BEAUTIES.”
Published by Sayer & Bennett 1776
(The British Museum)



“Une Dame à sa Toilette”
by François Boucher
(Berheimer-Colnaghi, Munich, London)



Anne de la Grangem Trianon
by François - Hubert Drouais c, 1750 - 1760
(Private Collection)



Lady Fastening Her Garter (La Toilette)
by François Boucher (Madrid, Spain) 1742
(Museo de arte Thyssen-Bornemisza, Madrid)

Figural Patch Boxes



English Enamel Patch Box from Charles Gouyn's Factory, London

c. 1749 - 1754

(Victoria & Albert Museum)



English Enamel Patch Box

c. 1750

(British Museum)

Patch Boxes



English Bilston Enamel Patch Box
c. 1780
(Private Collection)



English Bilston Enamel Patch Box
c. 1780
(Private Collection)



English Enamel Patch Box
"A Sound Conscience is a Wall of Brass"
Late 18th Century
(Walpole Antiques)



Bilston Enamel Patch Box
Weymouth, South Staffordshire
c. 1785
(Blackwood Antiques)



Bilston Enamel Patch Box
c. 1770 - 1780
(Private Collection)



English Bilston Enamel Patch Box
c. 1780
(Private Collection)



English Enamel Patch Box
c. 1780
(Private Collection)



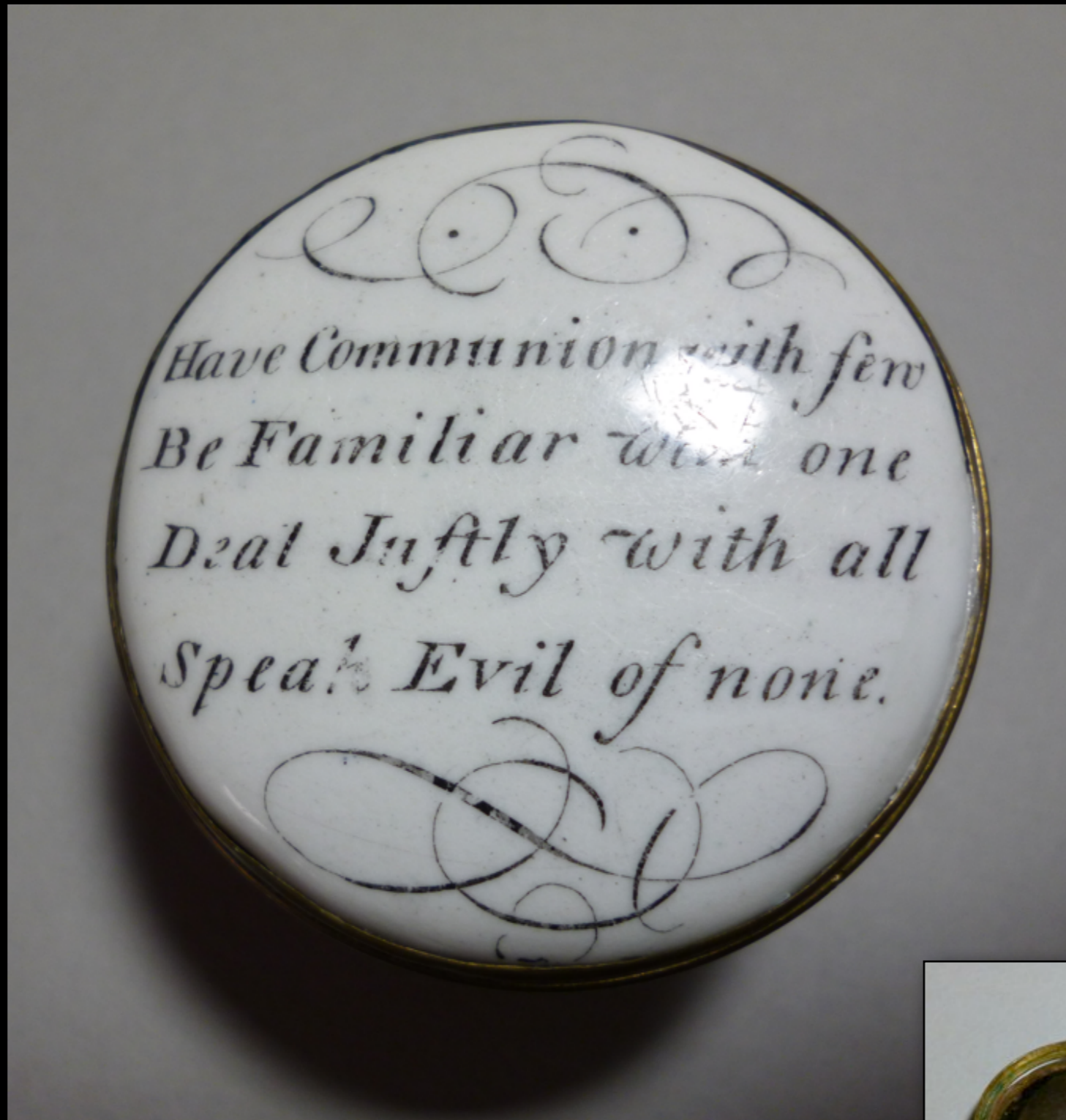


A Bilston Enamel Patch Box
c. 1780
(Private Collection)





English Enamel Patch Box
c. 1780
(Private Collection)



English Enamel Patch Box
c. 1780
(Private Collection)

Romantic Patch Boxes



English Enamel Patch Box
c. 1780
(Private Collection)



English Enamel Patch Box

c. 1765 - 1780

(Private Collection)



English Enamel Patch Box
c. 1780
(Private Collection)





English South Staffordshire Bilston Enamel Patch Box

c. 1770

(Blackwood Antiques)



A Bilston Enamel Patch Box
c. 1780
(Private Collection)



English Enamel Patch Box
c. 1780
(Private Collection)



English Enamel Patch Box
c. 1780
(Private Collection)



English Enamel Patch Box

c. 1780

(Karen A. Theberge / "Mrs. Elizabeth Loring" Collection)



A Bilston Enamel Patch Box
c. 1780
(Private Collection)



A Bilston Enamel Patch Box
c. 1780
(Private Collection)





A Bilston Enamel Patch Box
c. 1780
(Private Collection)



English Bilston or Staffordshire Enamel Patch Box

c. 1770

(Private Collection)



A Bilston Enamel Patch Box
c. 1780
(Private Collection)





English Bilston Enamel Patch Box

c. 1770

(Private Collection)



English Enamel Patch Box

c. 1770

(Ruby Lane)



A Bilston Enamel Patch Box
c. 1780
(Private Collection)



English Enamel Patch Box
c. 1780
(Private Collection)



English Enamel Patch Box from Bilston or Staffordshire
c. 1780
(Private Collection)



English Enamel Patch Box from Bilston
c. 1780
(The History of Wolverhampton)



English Enamel Patch Box
c. 1780
(Private Collection)



English Bilston or Battersea Enamel Patch Box

c. 1780

(Private Collection)



English Battersea Enamel Patch Box
c. 1780
(Private Collection)



English Bilston Enamel Patch Box

c. 1780

(Private Collection)



English Bilston Enamel Patch Box
c. 1780
(Private Collection)

Military Patch Boxes



Bilston Enamel Patch Box
Given by a British Soldier to His Love
c. 1770 - 1780
(Private Collection)



English "G. Washington" Enamel Patch or Snuff Box
c. 1780
(Private Collection)



English "MAJOR GENL GATES" Enamel Patch or Snuff Box
c. 1776
(Early American Auctions)



English Enamel Patch Box
c. 1780
(Private Collection)

Nautical Patch Boxes



South Staffordshire Admiral Keppel Enamel Patch Box

c. 1779

(Bonhams Auction House)



English Enamel Patch Box

c. 1780

(Private Collection)



Bilston Enamel Patch Box
Given by a British Sailor to His Love
c. 1780
(Acanthus Antiques)



English Enamel Patch Box "The Victory"
c. 1780
(National Maritime Museum)

“A Trifle From...”
Patch Boxes



English Enamel Patch Box

c. 1770

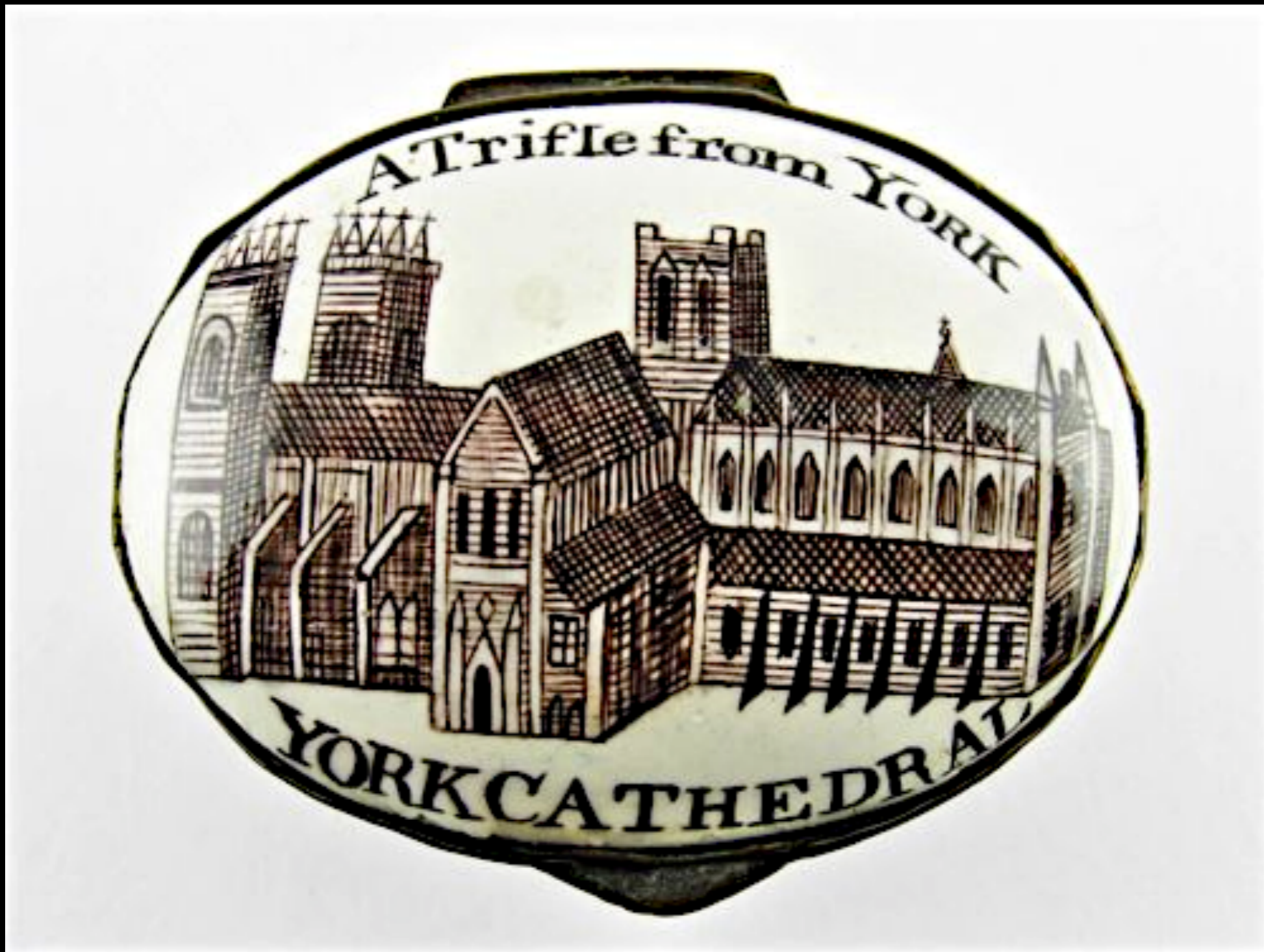
(Private Collection)



English Bilston Enamel Patch Box

c. 1770

(Private Collection)



English Bilston or Battersea Enamel Patch Box
c. 1780
(Ruby Lane)



English Enamel Patch Box
c. 1780
(Private Collection)



A Bilston Enamel Patch Box
c. 1780
(Private Collection)



English Bilston or Battersea Enamel Patch Box
c. 1780
(Ruby Lane)



English Bilston or Battersea Enamel Patch Box
c. 1780
(Private Collection)



English Bilston Enamel Patch Box
c. 1780
(Private Collection)



English Bilston Enamel Patch Box
c. 1780
(Private Collection)



English Bilston Enamel Patch Box
c. 1780
(Private Collection)



English Bilston Enamel Patch Box
c. 1780
(Private Collection)

Balloon Patch Boxes



South Staffordshire Enamel Patch Box

c. 1785

(Bonhams Auction House)



Silvered Copper & Tortoise Patch Box of a Flight by Montgolfier in Front of the Louvre
Dated 1 December, 1783
(Artfinding.com)

Mourning Patch Boxes



English Enamel Patch Box
c. 1780
(Private Collection)



English Enamel Patch Box
c. 1780
(Private Collection)

Acknowledgements

The material contained within these slideshows is presented for educational purposes only. The 18th Century Material Culture Resource Center does not personally own any of the items depicted herein and is indebted to the countless museums, libraries, and private collectors who willingly share their collections with the public through the internet. Every attempt has been made to credit these organizations and individuals for their contributions as best as possible.

If there is a question you have regarding a particular item featured within a presentation, please contact the 18th Century Material Culture Resource Center and we will try to answer your inquiry as best as possible. If for any reason you feel there is any item that should not be presented here, or if there is an error in any listing, or if you know the source for any item whose credit is unknown, please inform us and we will make sure your concern is addressed as soon as possible.

Thank you!

- The 18th Century Material Culture Resource Center