

18th Century Material Culture

Portrait Artists in America

Joseph Blackburn



Joseph Blackburn

- English portrait painter who spent time in Bermuda (1752 - 1753), Newport (1754), Boston (1755-1758) and Portsmouth, New Hampshire (1758 - 1762)
- Returned to London in late 1763
- Worked in England, Wales, and Dublin from 1763 - 1777
- Likely born c. 1730 and passed away in 1778, although exact dates are uncertain



Richard Acton
by Joseph Blackburn 1774
(Frick Art Reference Library)



Mrs. Richard Acton "Lady Anne Acton"
by Joseph Blackburn 1774
(Frick Art Reference Library)



Lieutenant General Jeffery Amherst
by Joseph Blackburn 1758
(Mead Art Museum at Amherst College)



Thomas Amory
by Joseph Blackburn c. 1760
(Sotheby's)



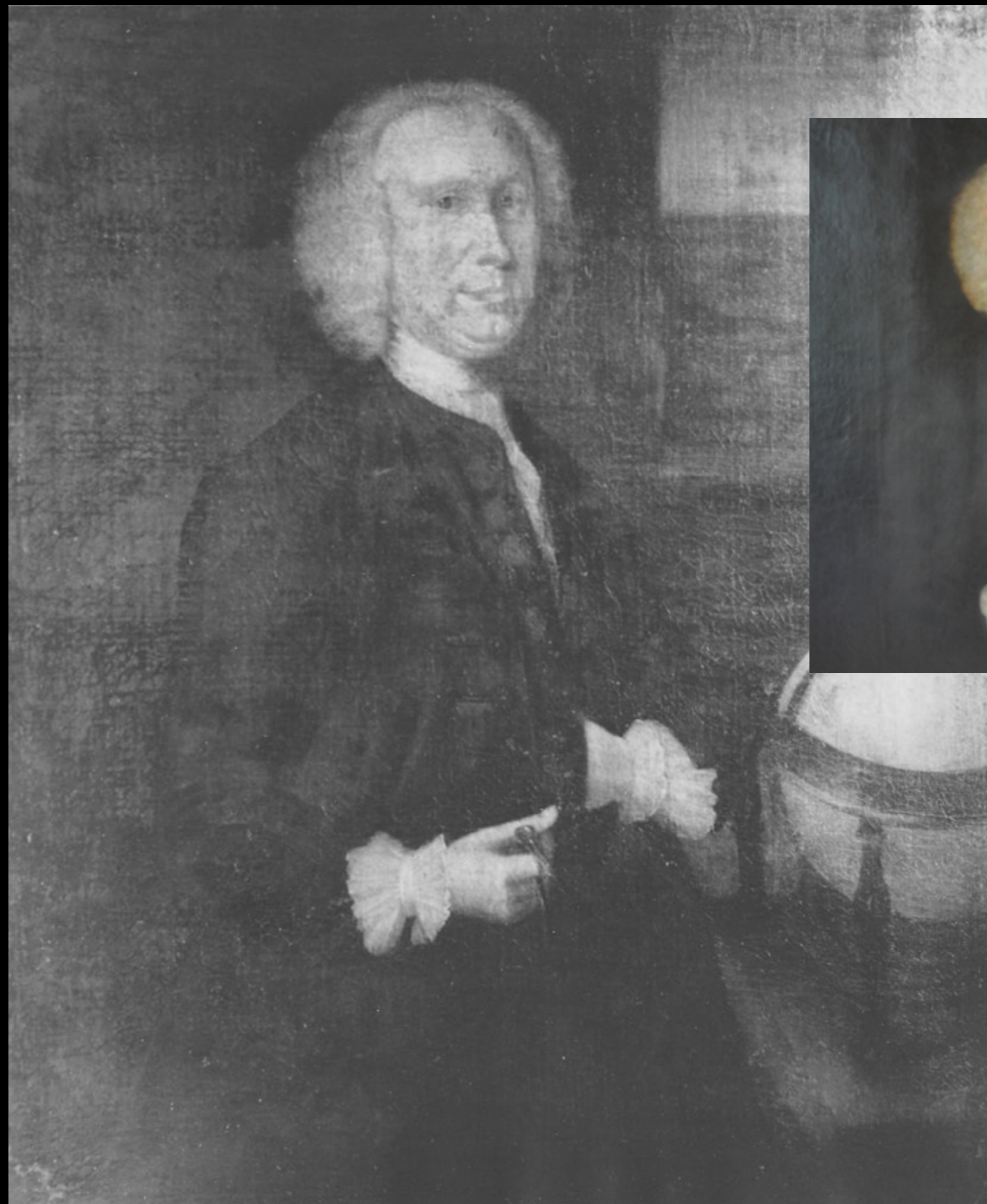
Colonel Theodore Atkinson
by Joseph Blackburn c. 1760
(Worcester Art Museum)



Mrs. Theodore Atkinson (Hannah Wentworth)
by Joseph Blackburn c. 1760
(Cleveland Museum of Art)



Dr. Joshua Babcock
by Joseph Blackburn 1761
(Museum of Fine Arts, Boston)



Captain Robert Ball
by Joseph Blackburn
(Frick Art Reference Library / Boston Historical Society)



Mrs. Nathaniel Barrell
by Joseph Blackburn c. 1761
(Historic New England)



Deborah Bascombe
by Joseph Blackburn c. 1752 - 1753
(Frick Art Reference Library)



Sir Francis Bernard, British Colonial Administrator, Governor of the Provinces of New Jersey & Massachusetts Bay
by Joseph Blackburn c. 1758
(Frick Art Reference Library)



Lady Amelia Bernard (Amelia Offley)
by Joseph Blackburn
(Frick Art Reference Library)



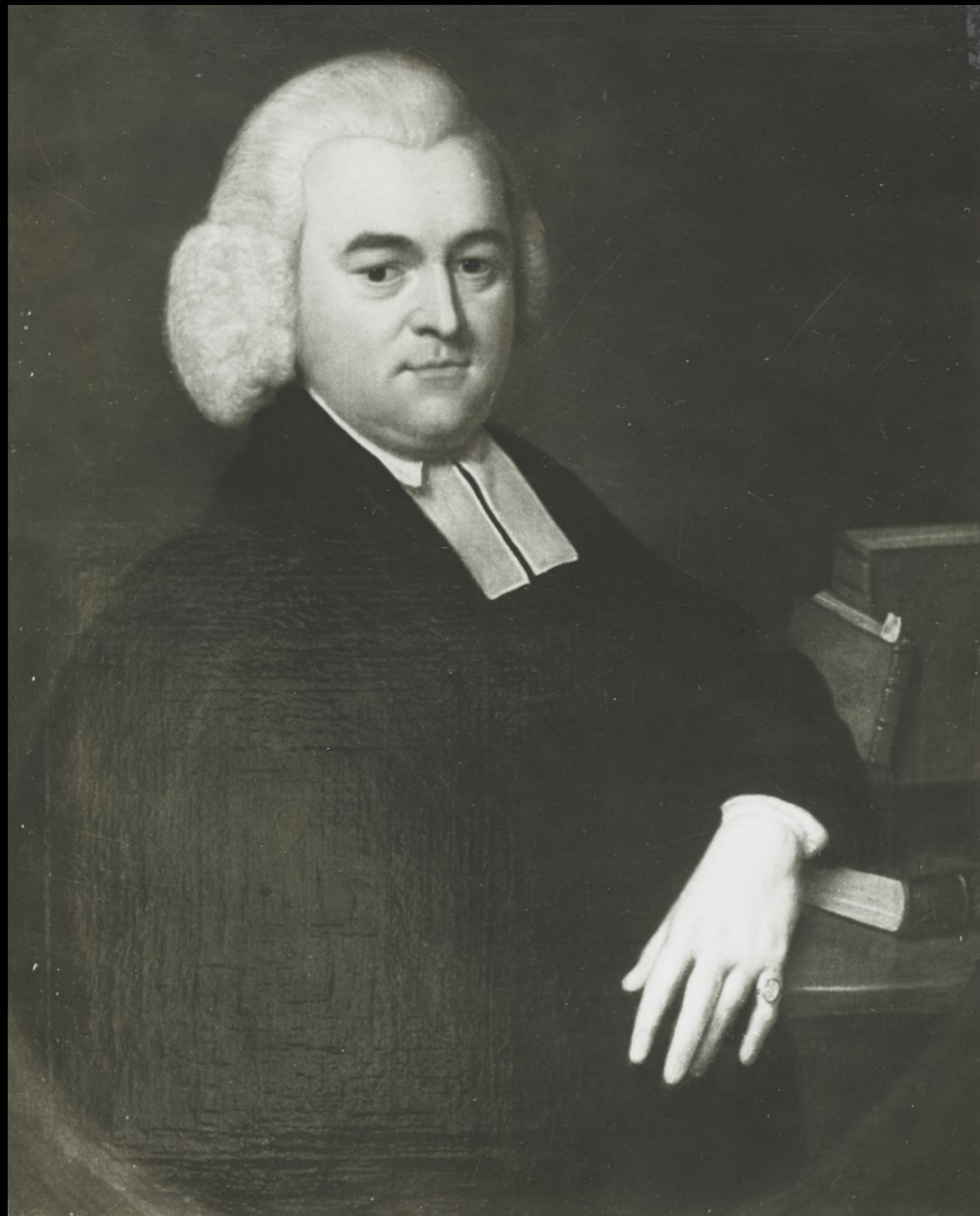
Mrs. George Bethune
by Joseph Blackburn 1755
(Museum of Fine Arts, Springfield)



Mrs. Joseph Blaney (Abigail Browne)
by Joseph Blackburn 1757
(Museum of Fine Arts, Boston)



Reverend Peter Bours
by Joseph Blackburn c. 1756
(Harvard University Art Museums)



Peter Bours of Newport, Rhode Island
by Joseph Blackburn
(Frick Art Reference Library)



Mrs. John Bours (Hannah Babcock)
by Joseph Blackburn 1759
(Worcester Art Museum)



Portrait of Elizabeth Bowdoin and James Bowdoin III
by Joseph Blackburn c. 1760
(Bowdoin College Museum of Art)



John Brown
by Joseph Blackburn c. 1760
(Cleveland Museum of Art)



Captain John Brown
by Joseph Blackburn c. 1754
(Brown University Library)



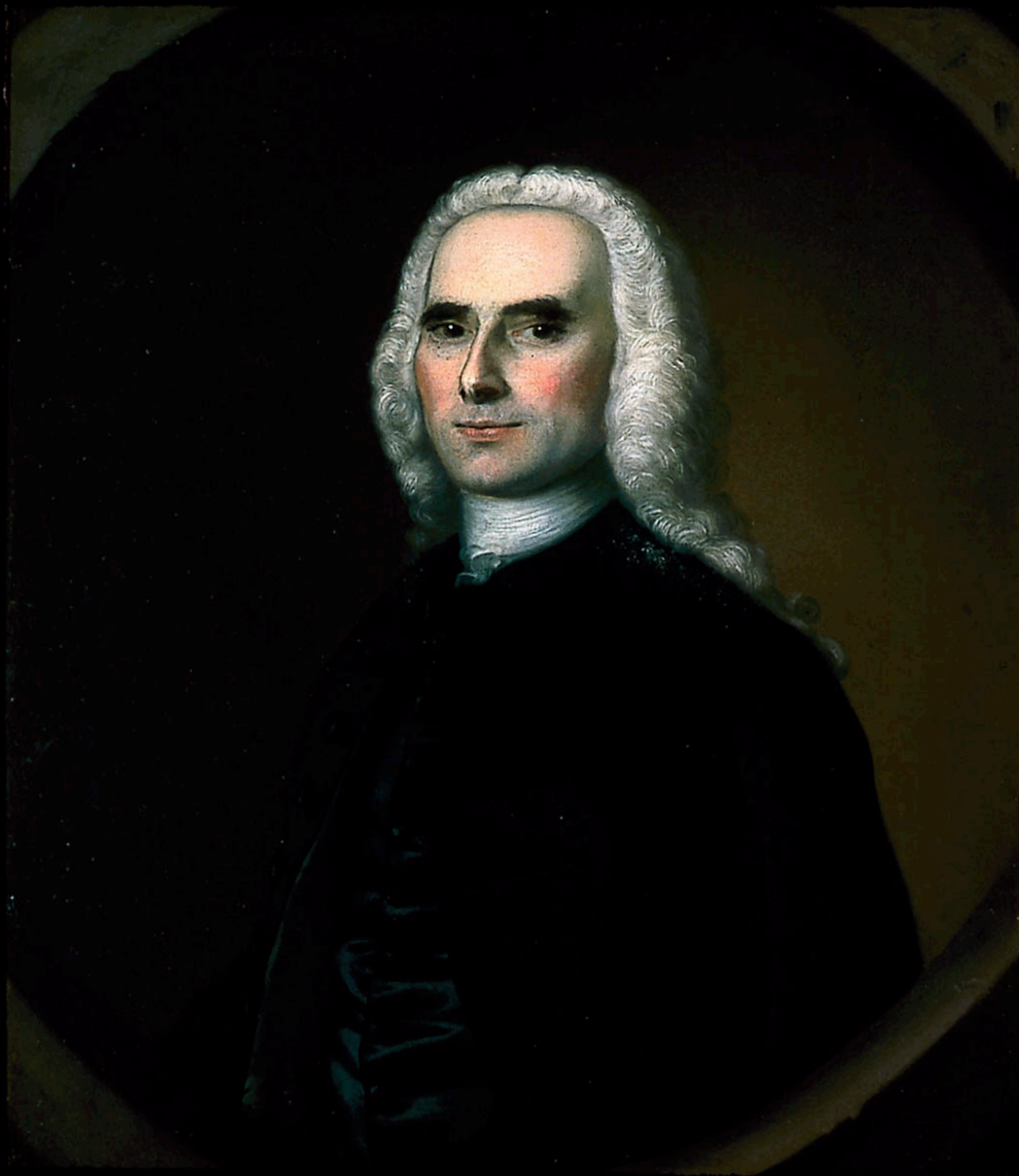
Captain John Brown
by Joseph Blackburn c. 1754
(Brown University Library)



Mrs. John Brown
by Joseph Blackburn 1754
(Brown University Library)



William Brownley, Esq.
by Joseph Blackburn 1768
(Skinner)



Thomas Bullfinch
by Joseph Blackburn c. 1757
(Museum of Fine Arts, Boston)



Mrs. Thomas Bulfinch (Susan Apthorpe)
by Joseph Blackburn 1757
(Museum of Fine Arts, Boston)



Mrs. David Chesebrough
by Joseph Blackburn 1754
(Metropolitan Museum of Art)



Mrs. Wyseman Clagett (Lettice Mitchell, Later Mrs. Simon McQuesten)
by Joseph Blackburn c. 1760
(Brooklyn Museum)



© the Rhode Island Historical Society
All Rights Reserved - WWW.RIHS.ORG

Thomas Cranston of Rhode Island
by Joseph Blackburn c. 1754 - 1755
(Rhode Island Historical Society)



Captain Nathaniel Cunningham
by Joseph Blackburn c. 1756
(Private Collection)



Mrs. Samuel Curwen
by Joseph Blackburn 1755
(Private Collection)



Samuel Cutts
by Joseph Blackburn c. 1762 - 1763
(Metropolitan Museum of Art)



Samuel Cutts
by Joseph Blackburn c. 1762 - 1763
(Metropolitan Museum of Art)



Mrs. Hannah Davis
by Joseph Blackburn 1756
(Frick Art Reference Library)



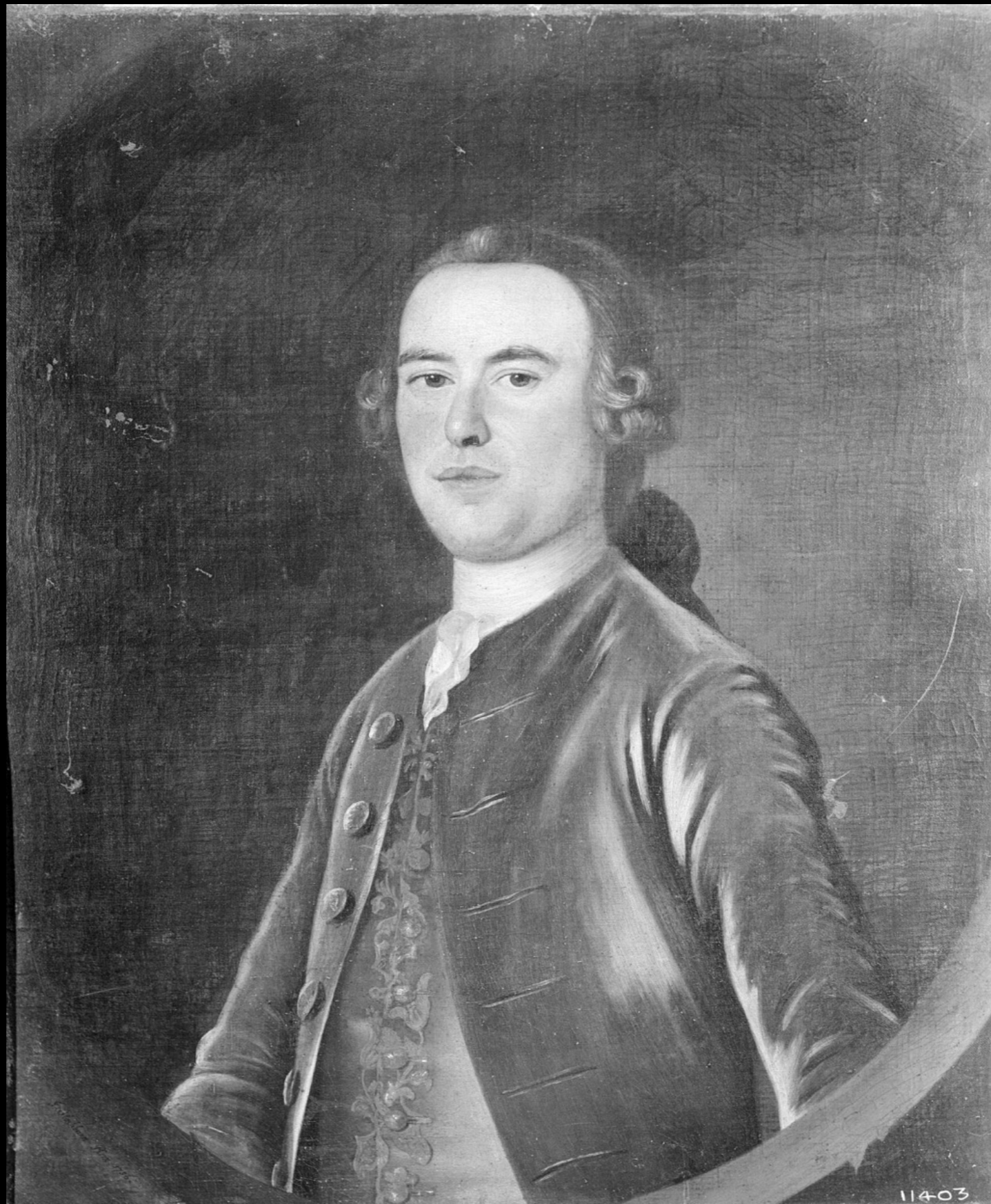
Mrs. Silas Deane (Elizabeth Saltonstall Evards)
by Joseph Blackburn
(Webb Deane Stevens Museum)



Lieutenant Colonel Thomas Dowdswell of H.M. 1st Regiment of Foot Guards
by Joseph Blackburn c. 1776 - 1777
(Guards Museum of London)



Brigadier General Joseph Dwight of Hatfield, Massachusetts, Member Honorable Artillery Co. of Boston 1734
by Joseph Blackburn 1756
(Frick Art Reference Library)



Benjamin Ellery
by Joseph Blackburn c. 1756
(Frick Art Reference Library)



Portrait of a Man, Possibly John Erving II
by Joseph Blackburn c. 1769
(Bowdoin College Museum of Art)



John Erving II
by Joseph Blackburn c. 1755
(Wadsworth Atheneum)



Mrs. John Erving II (Maria Catherine Shirley)
by Joseph Blackburn c. 1755
(Wadsworth Atheneum)



Mrs. Fisher
by Joseph Blackburn c. 1752 - 1753
(Frick Art Reference Library)



Timothy Fitch, Merchant and Slave Trader Who Operated in Boston, Salem, Medford, and Nantucket
by Joseph Blackburn c. 1760
(Peabody Essex Museum)



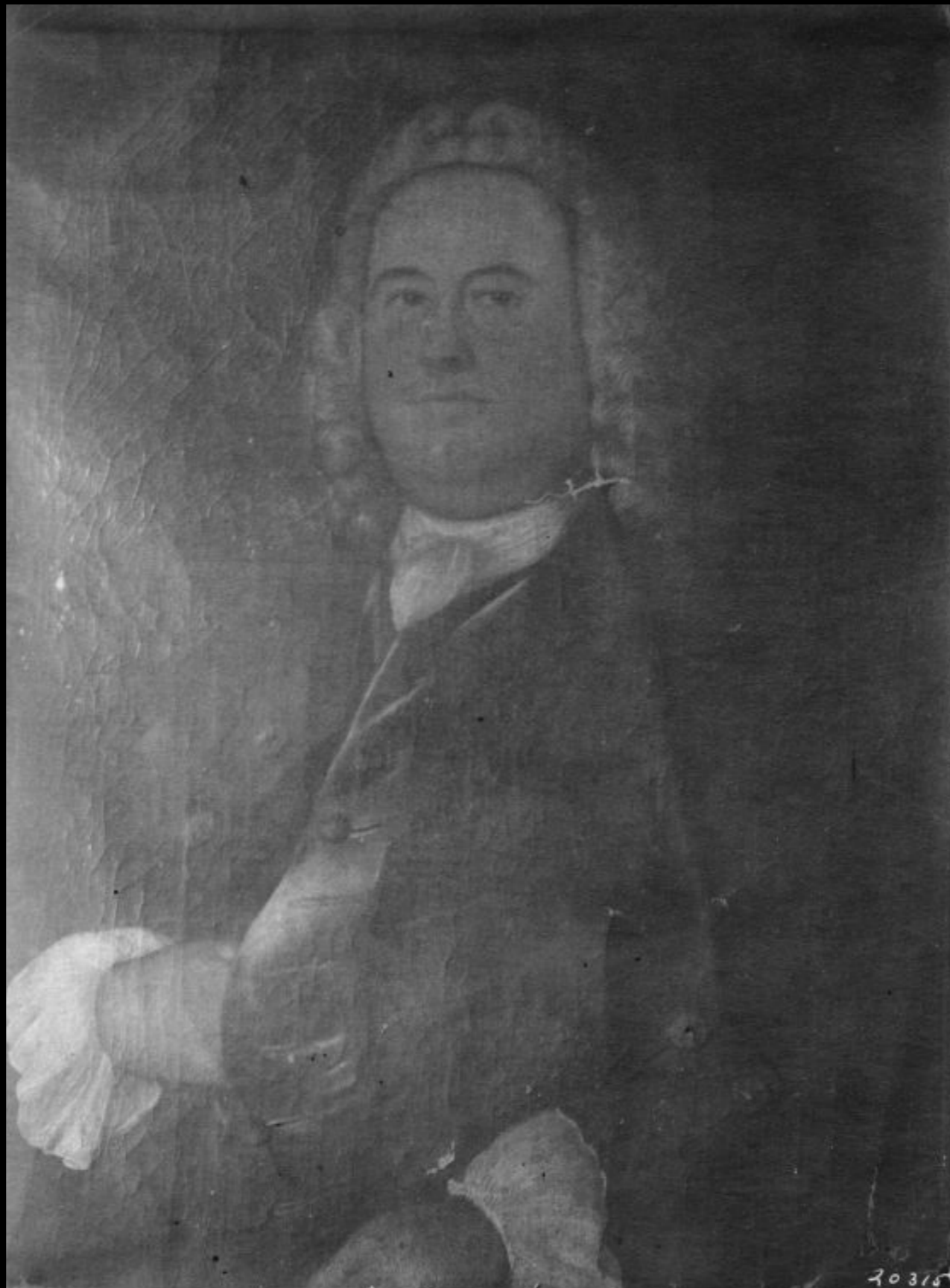
Mrs. Timothy Fitch (Eunice Brown)
by Joseph Blackburn c. 1760
(Worcester Art Museum)



Mrs. Thomas Flucker (Hannah Waldo)
by Joseph Blackburn 1755
(Bowdoin College Museum of Art)



“David Garrick”
by Joseph Blackburn
(Skinner)



Mr. Gilbert
by Joseph Blackburn c. 1752 - 1753
(Frick Art Reference Library)



Mrs. Gilbert
by Joseph Blackburn c. 1752 - 1753
(Frick Art Reference Library)



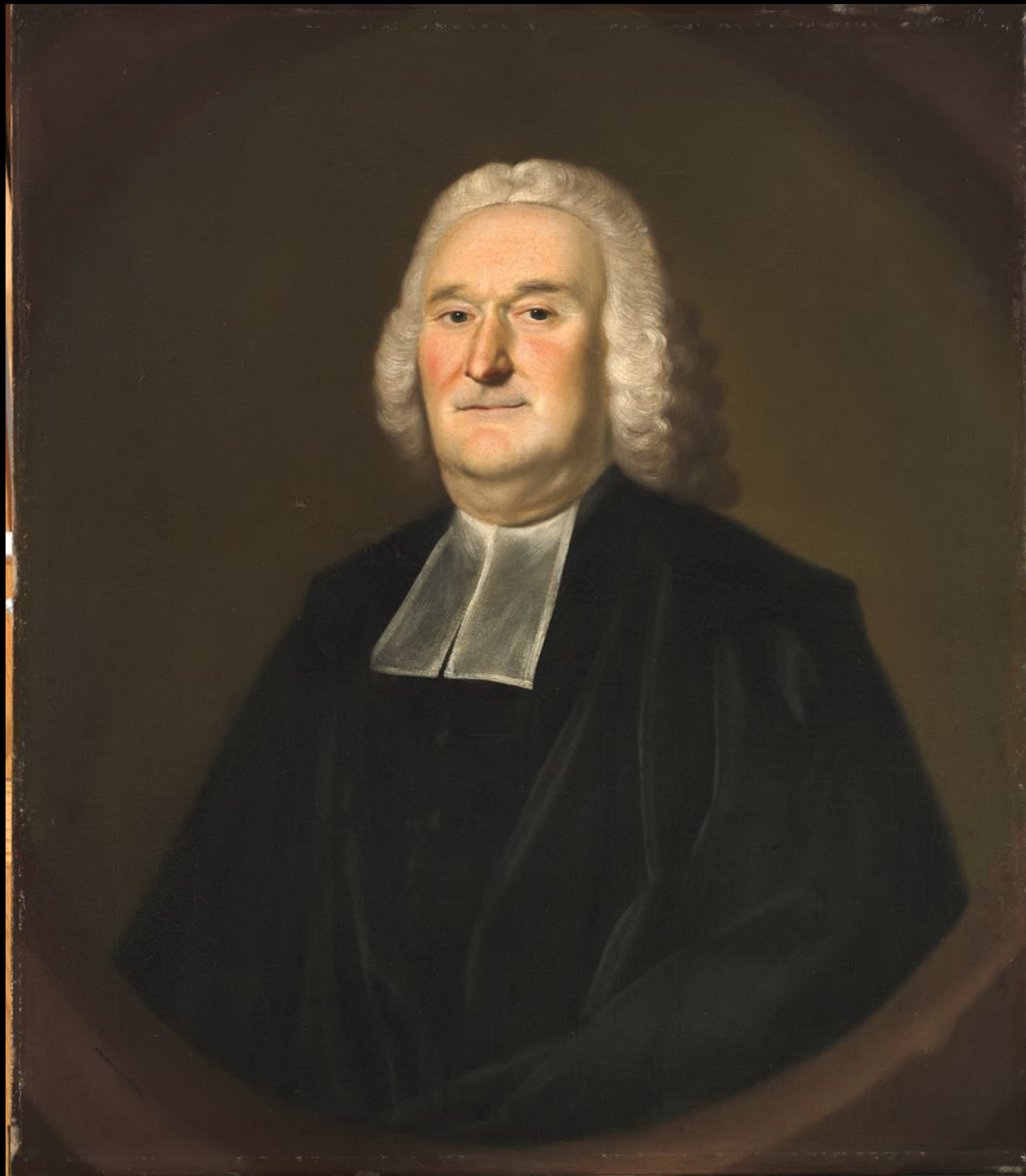
Miss Gilbert
by Joseph Blackburn c. 1752 - 1753
(Frick Art Reference Library)



Mrs. Alexander Grant (Abigail Chesebrough)
by Joseph Blackburn 1754
(Art Institute of Chicago)



Benjamin Green
by Joseph Blackburn c. 1755
(Montclair Art Museum)



Reverend Daniel Greenleaf
by Joseph Blackburn c. 1755
(Harvard University Art Museums)



Captain William Hall
by Joseph Blackburn
(Frick Art Reference Library)



Mrs. William Hall (Patience Stowe)
by Joseph Blackburn c. 1752 - 1753
(Frick Art Reference Library)



© Redwood Library & Athenaeum

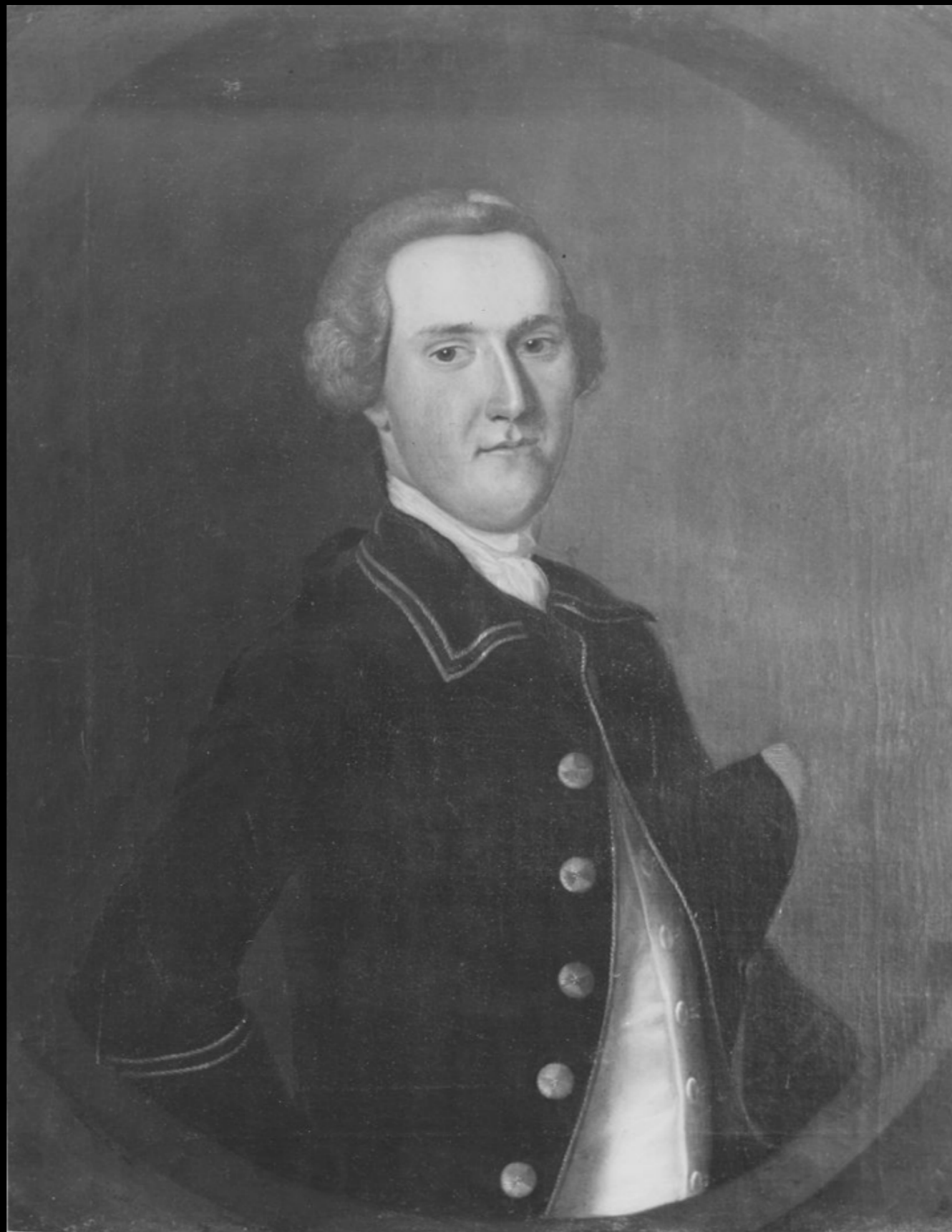
Elizabeth Pelham Harrison
by Joseph Blackburn c. 1755
(Redwood Library & Athenaeum)



Mrs. John Harvey
by Joseph Blackburn c. 1753
(Bermuda National Gallery)



Mr. And Mrs. Thomas Hooper (Mary Winsmore) of Worcester, Massachusetts
by Joseph Blackburn c. 1768
(Private Collection)



A Gentleman of the Hubble Family
by Joseph Blackburn
(Frick Art Reference Library)



Thomas Hughs
by Joseph Blackburn 1774
(The Wilson)



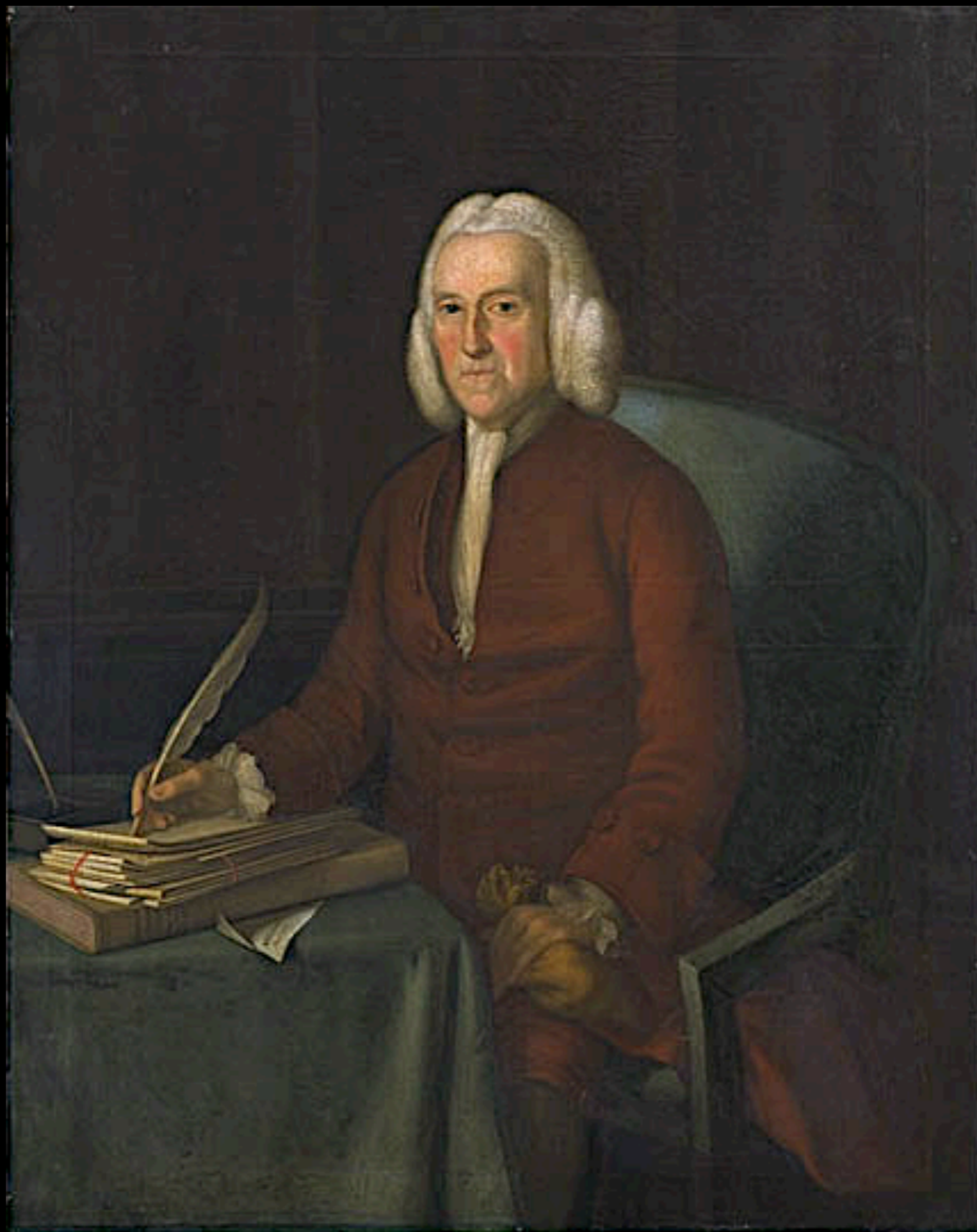
Mrs. Thomas Hughs
by Joseph Blackburn 1774
(The Wilson)



Mrs. George Jaffrey (Sarah Wentworth)
by Joseph Blackburn 1761
(Frick Art Reference Library)



Francis Jones
by Joseph Blackburn 1752
(Frick Art Reference Library)



Hugh Jones
by Joseph Blackburn 1777
(Worcester Art Museum)



Anne Jones
by Joseph Blackburn 1752
(Private Collection)



Mrs. Thomas Jones (Mary Harvey)
by Joseph Blackburn 1752
(Frick Art Reference Library)



Mrs. Knight of Gosfield
Attributed to Joseph Blackburn
(Private Collection)



Portrait of a Gentleman, Possibly Woodbury Langdon of Portsmouth, New Hampshire
Attributed to Joseph Blackburn
(Private Collection)



Elizabeth Naden
Joseph Blackburn 1756
(New York Historical Society)



Andrew Oliver, Jr.
by Joseph Blackburn 1755
(National Portrait Library)



Mrs. Andrew Oliver, Jr. (Mary Lynde)
by Joseph Blackburn 1755
(National Portrait Library)



Thomas Oliver
by Joseph Blackburn 1760
(Frick Art Reference Library)



Lieutenant - Governor Thomas Oliver
by Joseph Blackburn 1760
(Frick Art Reference Library)



Woodbury Osborne
Attributed to Joseph Blackburn 1756
(Private Collection)



James Otis, Jr.
by Joseph Blackburn c. 1755
(Private Collection)



Mrs. James Otis, Jr. (Ruth Cunningham)
by Joseph Blackburn 1755
(Frick Art Reference Library)



Ann Phillips
by Joseph Blackburn 1755
(Smith College Museum)



Andrew Faneuil Philips
by Joseph Blackburn c. 1755
(Smith College Museum)



Gillam Philips
by Joseph Blackburn c. 1755
(Smith College Museum)



Mrs. Gillam Phillips (Marie Fanueil)
by Joseph Blackburn 1755
(Smith College Museum)



Captain John Pigott
by Joseph Blackburn 1752
(Los Angeles County Museum of Art)



Mrs. John Pigott
by Joseph Blackburn 1752
(Los Angeles County Museum of Art)



James Pitts
by Joseph Blackburn c. 1757
(Detroit Institute of Arts)



Mrs. James Pitts
by Joseph Blackburn 1757
(Detroit Institute of Arts)



Colonel Benjamin Pollard
by Joseph Blackburn c. 1756
(Skinner)



Mrs. Benjamin Pollard
by Joseph Blackburn 1756
(Yale University Art Gallery)



Elizabeth Browne Rogers of Portsmouth, New Hampshire
by Joseph Blackburn c. 1760
(Reynolds House, Museum of American Art)



A further objection to this being Rebecca (Russell) Weyer is
the complete lack of resemblance between this lady and
her sister Abigail (Russell) Curwen and her brother
Mr. Chambers Russell - Mrs. Gardner also has a
port of her John Lowell (1743-1802) by John Johnston

Portrait called Mrs. David Russell (Rebecca Chambers 1691-1729)
but too late to be of her, and evidently painted by Blackburn about
1755-7 Owned by Mrs. John Lowell Gardner. "Green Hill" Brookline.
It may be a portrait of Mrs. Russell's daughter Rebecca, b. 11 May,
1721, who married David Weyer (
and lived in Falmouth (Portland) Maine - She d.
It looks however somewhat younger than Rebecca would have been in 1757 (36 years)

A Lady of the Russell Family
by Joseph Blackburn c. 1755-1757
(Frick Art Reference Library)



Mrs. Chambers Russell (Mary Wainwright)
by Joseph Blackburn c. 1755
(Frick Art Reference Library)



Mrs. Daniel Russell (Rebecca Chambers)
by Joseph Blackburn
(Frick Art Reference Library)



Ann Saltonstall
by Joseph Blackburn 1762
(Brooklyn Museum)



Ann Saltonstall
by Joseph Blackburn 1762
(San Antonio Museum of Art)



Lady Abigail Erving Scott
Attributed to Joseph Blackburn
(Carl W. Stinson, Inc.)



Portrait of a Lady - Lady Abigail Erving Scott?
Attributed to Joseph Blackburn
(Private Collection)



Deacon Jonathan Simpson
by Joseph Blackburn c. 1758
(Museum of Fine Arts, Boston)



Jonathan Simpson
by Joseph Blackburn c. 1758
(Hood Museum of Art, Dartmouth College)



Mrs. Jonathan Simpson (Margaret Lechmere)
by Joseph Blackburn c. 1758
(Museum of Fine Arts, Boston)



Mrs. George St. Loe
by Joseph Blackburn
(Frick Art Reference Library)



Mrs. Mary Sylvester
by Joseph Blackburn 1754
(Metropolitan Museum of Art)



Mrs. John Tasker (Deborah Skinner)
by Joseph Blackburn 1756
(Frick Art Reference Library)



Mrs. John Taylor (Ann Winslow)
by Joseph Blackburn 1757
(Frick Art Reference Library)



Colonel William Taylor
by Joseph Blackburn c. 1760
(Private Collection)



Mrs. William Taylor (Faith Winslow)
by Joseph Blackburn 1757
(Frick Art Reference Library)



Colonel Moses Titcomb
by Joseph Blackburn
(Frick Art Reference Library)



Mrs. Henry Tucker (Frances)
by Joseph Blackburn
(Frick Art Reference Library)



Mrs. Richard Waldron III (Elizabeth Westbrook)
by Joseph Blackburn
(Frick Art Reference Library)



Thomas Westbrook Waldron
by Joseph Blackburn c. 1760
(Frick Art Reference Library)



Jonathan Warner, Merchant of Portsmouth, New Hampshire
by Joseph Blackburn 1761
(Museum of Fine Arts, Boston)



Jonathan Warner, Merchant of Portsmouth, New Hampshire
by Joseph Blackburn 1761
(Museum of Fine Arts, Boston)



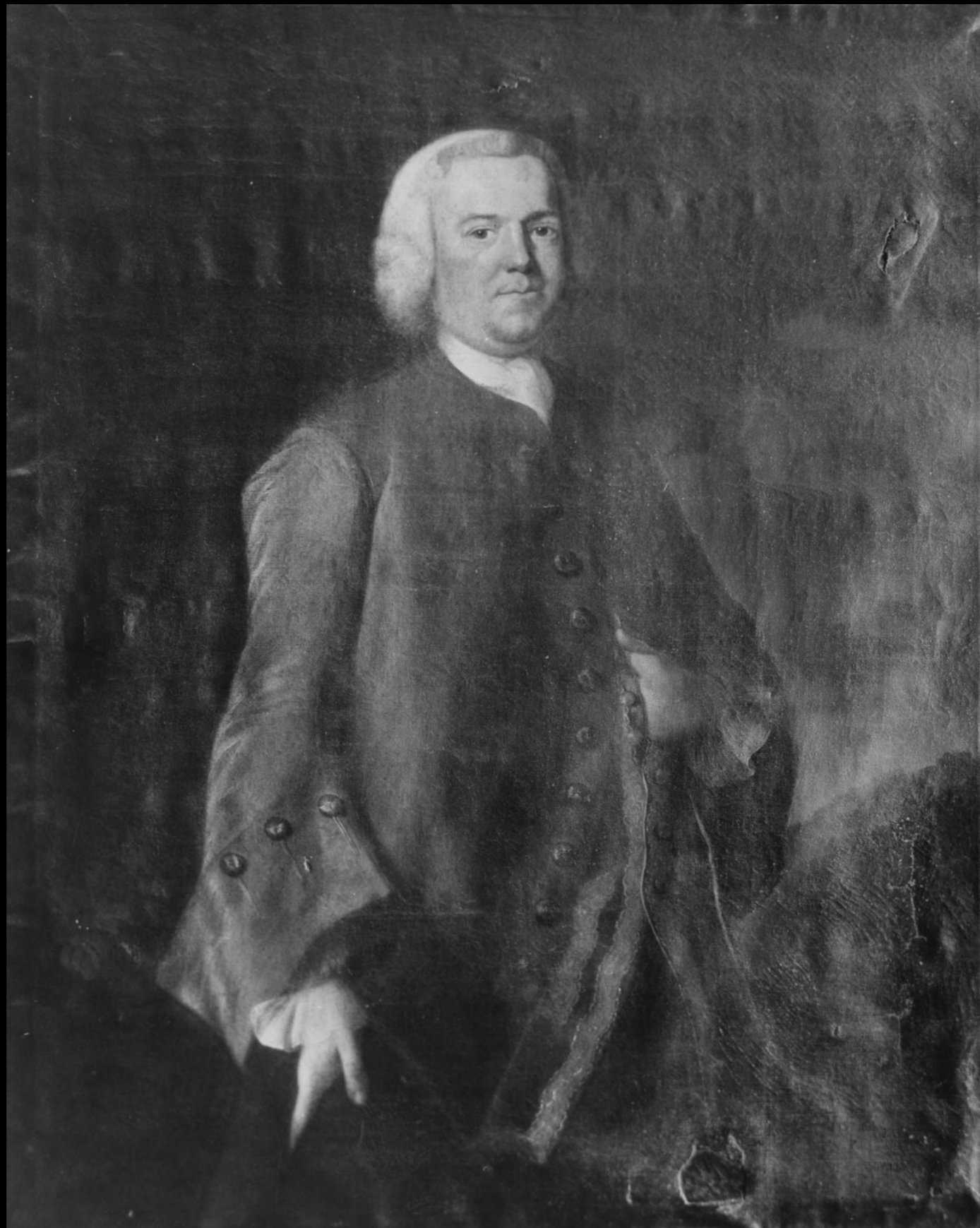
Polly Warner of Portsmouth, New Hampshire
by Joseph Blackburn c. 1761
(Warner House Museum)



Nathaniel Warner
by Joseph Blackburn 1761
(Frick Art Reference Library)



Governor Benning Wentworth of New Hampshire
by Joseph Blackburn c. 1760
(New Hampshire Historical Society)



John Wentworth
by Joseph Blackburn c. 1759
(Frick Art Reference Library)



Lieutenant - Governor John Wentworth
by Joseph Blackburn c. 1760
(Frick Art Reference Library)



Marchioness Wentworth
by Joseph Blackburn c. 1767
(Minneapolis Institute of Art)



Thomas Wentworth
by Joseph Blackburn 1761
(San Diego Museum of Art)



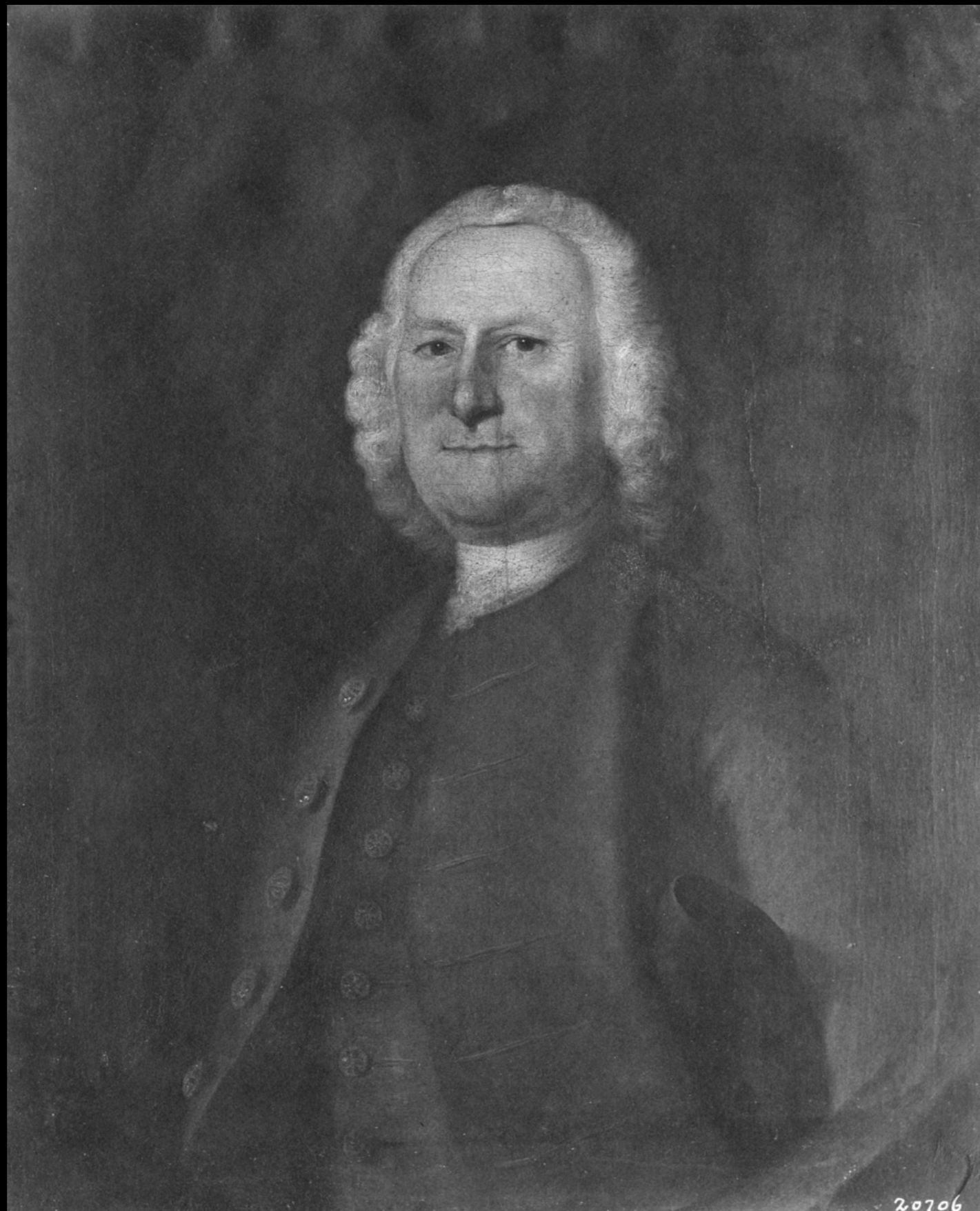
Richard and Anne Willis, Eldest Twin Children of Richard Willis
by Joseph Blackburn 1778
(Unknown)



Issac Winslow & His Family
by Joseph Blackburn 1755
(Museum of Fine Arts, Boston)



General John Winslow
by Joseph Blackburn c. 1756
(Pilgrim Hall Museum, Plymouth, Massachusetts)



Joshua Winslow
by Joseph Blackburn c. 1756
(Frick Art Reference Library)



David Wood
by Joseph Blackburn
(Bennington Museum, Bennington, Vermont)



Portrait of a Lady
by Joseph Blackburn 1762
(Brooklyn Museum)



Portrait of a Lady
Attributed to Joseph Blackburn
(Antique Associates of West Townsend)



Portrait of a Lady
by Joseph Blackburn
(Frick Art Reference Library)



Portrait of a Lady
by Joseph Blackburn
(Frick Art Reference Library)



Portrait of a Lady from Rhode Island
by Joseph Blackburn
(William Vareika Fine Arts, Ltd.)



Portrait of a Gentleman
by Joseph Blackburn c. 1760
(Corcoran Art Gallery)



Portrait of an English Militia Officer
by Joseph Blackburn c. 1773
(Oklahoma City Museum of Art)



Portrait of a Provincial Military Officer
by Joseph Blackburn c. 1756
(National Portrait Gallery)



Portrait of a Naval Officer
by Joseph Blackburn
(Sotheby's)



Child with "GR" Marked Drum
Attributed to Joseph Blackburn
(Private Collection)

Acknowledgements

The material contained within these slideshows is presented for educational purposes only. The 18th Century Material Culture Resource Center does not personally own any of the items depicted herein and is indebted to the countless museums, libraries, and private collectors who willingly share their collections with the public through the internet. Every attempt has been made to credit these organizations and individuals for their contributions as best as possible.

If there is a question you have regarding a particular item featured within a presentation, please contact the 18th Century Material Culture Resource Center and we will try to answer your inquiry as best as possible. If for any reason you feel there is any item that should not be presented here, or if there is an error in any listing, or if you know the source for any item whose credit is unknown, please inform us and we will make sure your concern is addressed as soon as possible.

Thank you!

- The 18th Century Material Culture Resource Center