

# 18th Century Material Culture Watch Chains & Accessories



# Watch Chains & Accessories

During the 18th Century, watches were owned and worn by both men and women, from the wealthy to the not so wealthy. They were carried on the body by simple ribbons, tapes, cords, or chains.

When a woman wore a watch, she frequently did so with an ornamental chain suspended to the waist by a hook. Often adorned with a variety of items such as watch keys, wax seals, pomanders, and other decorations to their fancy, these articles were commonly referred to as “Equipage” chains. While many refer to these chains as “Chatelains”, this nomenclature is actually incorrect for the 18th century as the term does not appear in any period references, including English dictionaries, until the mid 19th century.

Men traditionally carried their watches by a ribbon, cord, or chain in a small pocket sewn into the waistband of their breeches. This pocket was known as a “Fob”. It was not until the 19th century that men began to fashionably wear their watches in the pocket of a waistcoat or vest. It was at this time, that the definition of a “Fob” also changed. From that time forward, articles suspended by a watch chain, such as a seal, replaced the definition of the defunct breeches pocket.

# Watch Chains & Accessories



American or European Cotton Breeches  
c. 1770  
(Metropolitan Museum of Art)

# Watch Chains & Accessories

Often considered a symbol of status and social bearing, the wearing of a watch, particularly when being seen in public, was considered highly stylish during the 18th century. This eventually led to the fashion of wearing two watches, or at least the perception of wearing two watches. In many cases, expensive watches were substituted with cheaper alternatives. Non-working false watches known as “Fausse Montres” became quite acceptable to wear at this time, as did other objects which gave the illusion of being a watch, such as snuff boxes and miniature portraits in frames that resembled watch cases.



# Men Wearing Watches



*O Vanity of youthfull Blood,  
 So by Mistake to poison good,  
 Woman, formid for Social Love,  
 Fairest gift of Powers above!*

*Scour of every Household Blessing,  
 All Charm in Innocence possesing,  
 But turn'd to Vice, all Plagues above,  
 Foe to thy Being, Foe to Loves!*

*Just Divine to outward Viewing,  
 Abler Moulder of Ruin!  
 And Thou, no less of gift divine,  
 Sweet Poison of Misused Wine!*

*With Freedom led to every Part,  
 And secret Chamber of th' Heart;  
 Dost Thou thy friendly Host betray,  
 And show thy riotous gang of way?*

*To enter in with covert Treason,  
 O'erthrow the drowsy guard of Reason,  
 To ransack the abandon'd Place,  
 And revel there with wild Excess!*

*Invented, Painted, Engrav'd, & Publish'd by W.<sup>m</sup> Hogarth June 24. 1735. According to Act of Parliament.*

*Plate 3.*

“A Rake’s Progress” - “A Room at the Rose Tavern”  
 by William Hogarth 1735  
 (Lewis Walpole Library)



*“A Rake’s Progress” - “A Room at the Rose Tavern”*  
by William Hogarth 1735  
(Lewis Walpole Library)



William Wollaston  
by Thomas Gainsborough c. 1759  
(Colchester & Ipswich Museums Service)



Charles Tudway, MP  
by Thomas Gainsborough 1765  
(The Courtauld Gallery)



Sir Benjamin Truman  
by Thomas Gainsborough c. 1770 - 1774  
(Tate Galleries)



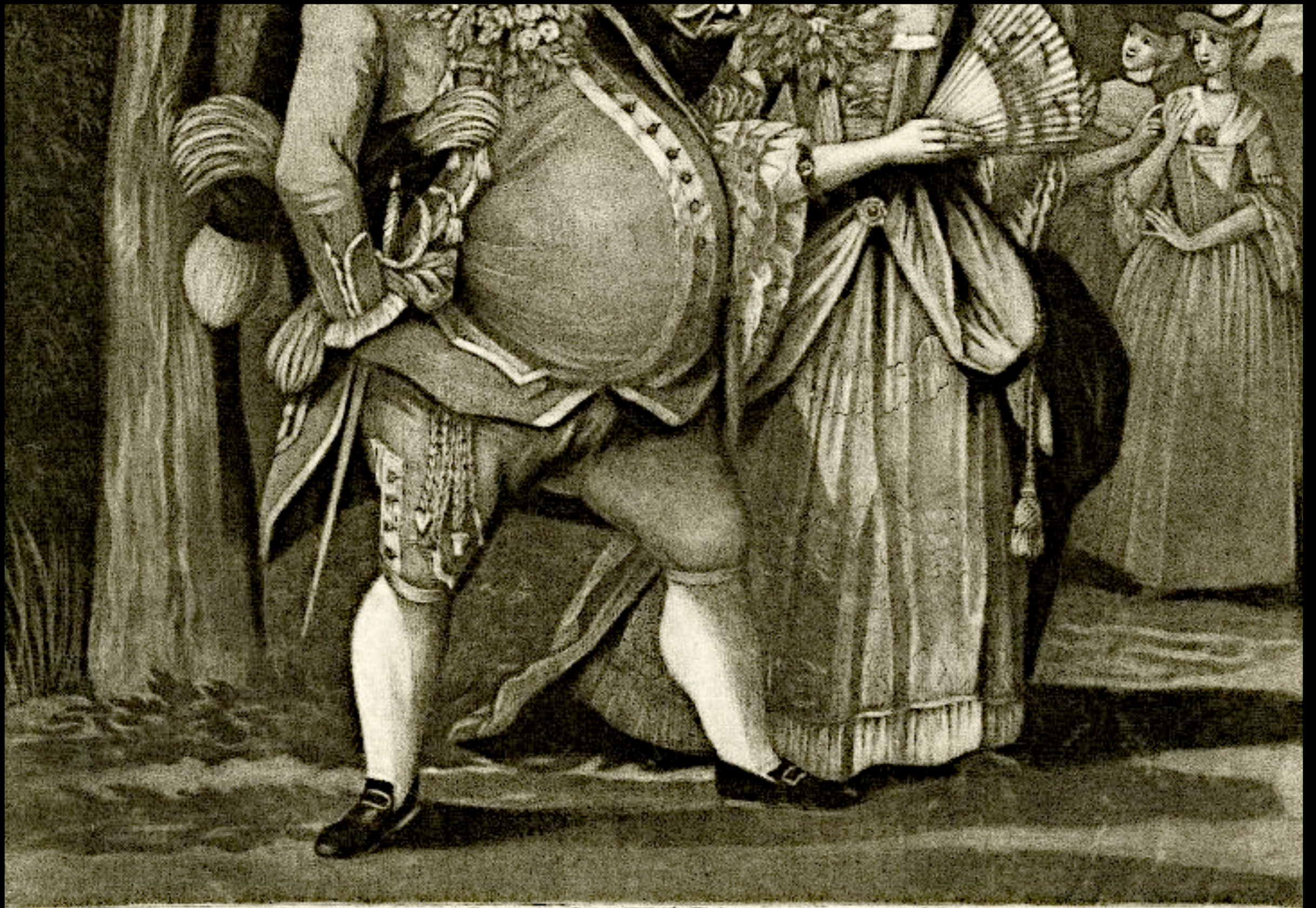
AGE and FOLLY, or the BEAUTIES.  
*Search Court and City, Town and Country round.  
Two such Beauties scarce are to be found.*

*London. Printed for R. Sayer & J. Bennett, N<sup>o</sup>. 53, Fleet-Street.*

*as the Act directs, 1 Feb. 1776.*

397

“AGE and FOLLY, or the BEAUTIES.”  
Published by Sayer & Bennett 1776  
(The British Museum)



AGE and FOLLY, or the BEAUTIES.

“AGE and FOLLY, or the BEAUTIES.”  
Published by Sayer & Bennett 1776  
(The British Museum)



*Dessiné par Le Clerc* Jeune elegant en habit moucheté avec une veste blanche garnie de bandes d'indiene *Gravé par Voysard*  
et coëffé d'un chapeau à la Suisse et une queue à l'Angloise.

*A Paris chez Esnauts et Rapilly rue St Jacques, à la Ville de Coutances. A. P. D. R.*

44  
1315

"Jeune elegant en habit moucheté..."  
by Pierre - Thomas LeClerc, Engraved by Etienne Claude Voysard, Published by Esnauts et Rapilly 1780  
(Museum of Fine Arts, Boston)



*LeClerc del.*

*Blouet sculp.*

Cet homme est vêtu d'un habit d'hiver de Ratine d'hollande double' de satin et par-dessus un surtout de Velours. Cet habillement est fréquent chez les personnes opulentes qui ont acquis un certain âge

*A Paris chez Esnauts et Rapilly, rue St. Jacques ala Ville de Continues A.P.D.R.*

44  
1780

"Cet homme est vêtu d'un habit d'hiver de Ratine..."  
 by Pierre - Thomas LeClerc, Engraved by Nicolas Dupin, Published by Esnauts et Rapilly 1780  
 (Museum of Fine Arts, Boston)



*Dessiné par Le Clerc*

*Gravé par Dupin*

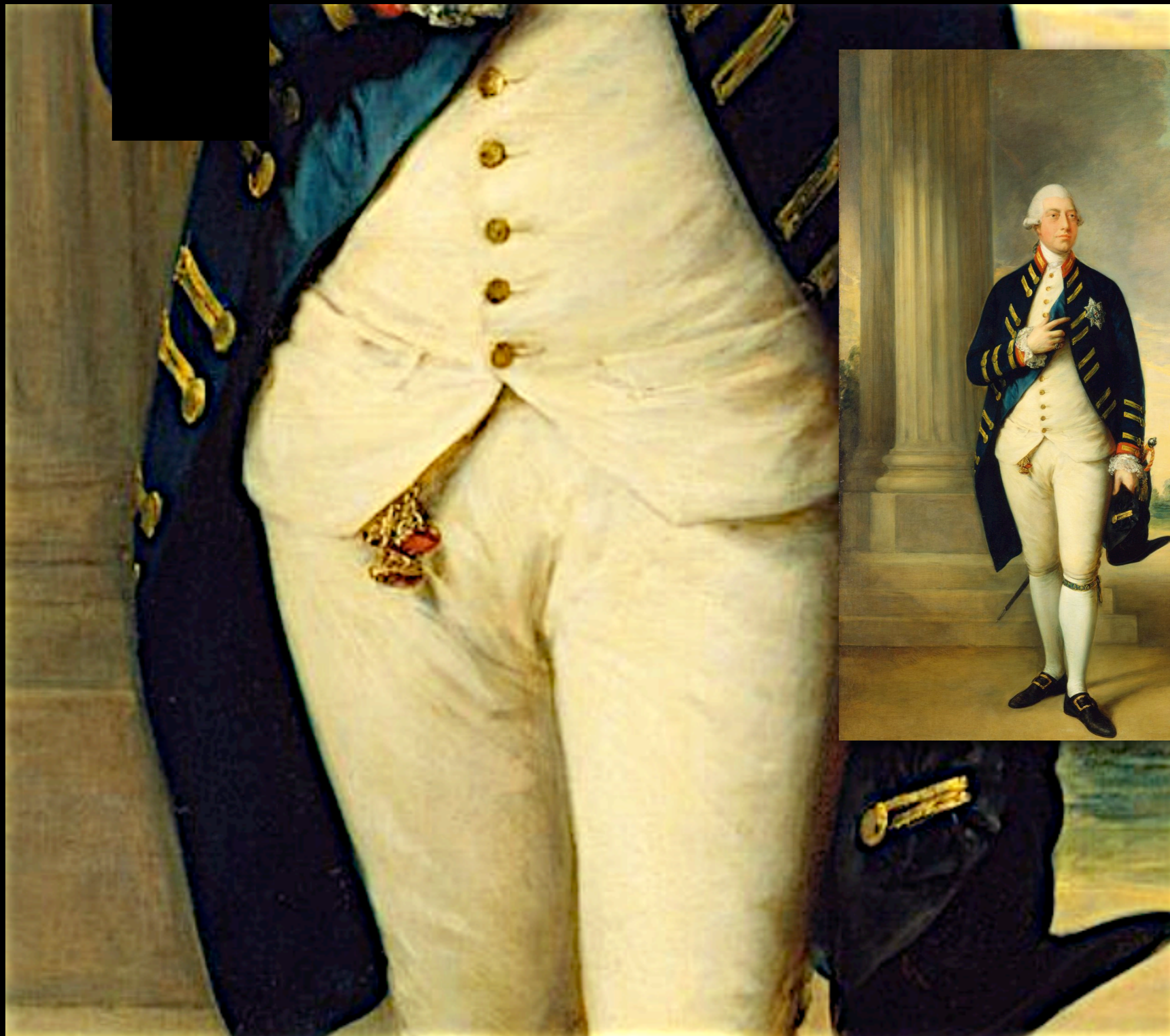
**LES DÉLASSEMENS DU BOIS DE BOULOGNE.**

Robe de taffetas uni d'une couleur tendre, garnie de même. L'habit fond Jaunatre, moucheté, veste et culotte blanches.

*A Paris chez Esnauts et Rapilly rue St-Jacques à la Ville de Coutances. A. P. D. R.*



"Les Délassemens du Bois de Boulogne. Robe de taffetas..."  
 by Pierre - Thomas LeClerc, Engraved by Nicolas Dupin, Published by Esnauts et Rapilly 1778  
 (Museum of Fine Arts, Boston)



King George III  
by Thomas Gainsborough c. 1780 - 1781  
(The Royal Collection)



Sir Harbord Harbord, Bt, MP for Norwich  
by Thomas Gainsborough c. 1783  
(Norwich Civic Portrait Collection)



Joshua Walker of Clifton  
by John Russell c. 1784  
(Clifton Park Museum)



“OLD WHEAT SHEAF in the trap of VENUS and BACCHUS.”  
by Robert Sayer 1786  
(Lewis Walpole Library)



“OLD WHEAT SHEAF in the trap of VENUS and BACCHUS.”

by Robert Sayer 1786  
(Lewis Walpole Library)



A Group Portrait Identified as John Johnson, Mr. Croft and William Bentham  
by Francis Wheatley  
(Christie's)

# Women Wearing Watches



*A Harlot's Progress Plate 1.*

+

*W. Hogarth inv. pinx. et sculp.*

“A Harlot’s Progress” - Plate I  
by William Hogarth 1732  
(Private Collection)



“A Harlot’s Progress” - Plate I  
by William Hogarth 1732  
(Private Collection)



Plate 3.

W. Hogarth inv: pinx et sculp.

P123.1

“A Harlot’s Progress” - Plate 3  
by William Hogarth 1732  
(Lewis Walpole Library)



“A Harlot’s Progress” - Plate 3  
by William Hogarth 1732  
(Lewis Walpole Library)



Miss Mary Edwards  
by William Hogarth 1740  
(Private Collection)



Miss Mary Edwards  
by William Hogarth 1740  
(Private Collection)



Marie-Jeanne Buzeau - A Lady on Her Daybed  
by François Boucher 1743  
(The Frick Collection)



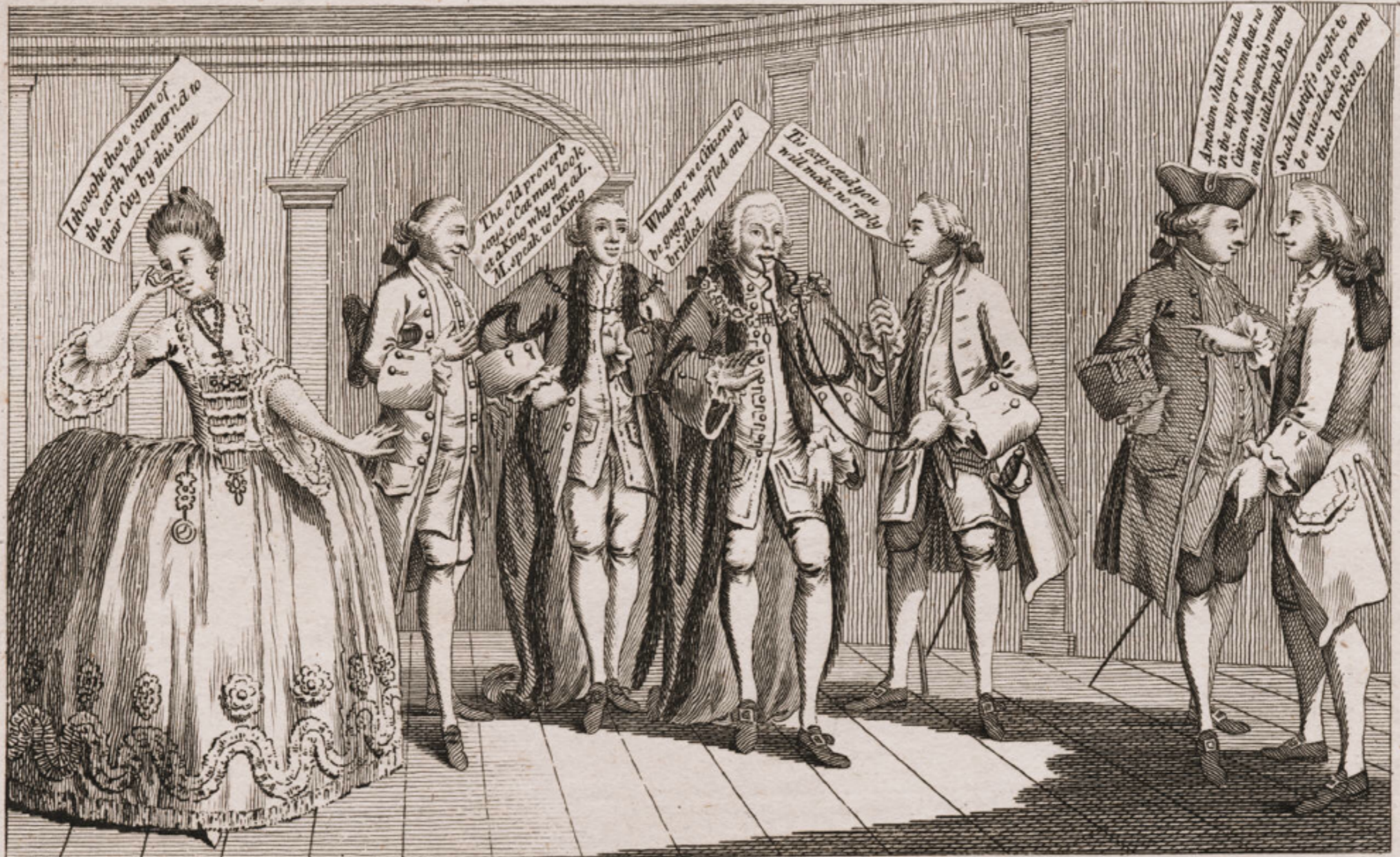
Marie-Jeanne Buzeau - A Lady on Her Daybed  
by François Boucher 1743  
(The Frick Collection)



“MAY”  
by Thomas Burford 1745  
(Private Collection)



Madame de Saint-Amarante  
by Louis Carrogis Carmontelle c. 1770  
(Chantilly, Musée Condé)



*A Scene at St. Ja\_\_s's; or the Courtiers attempting to bridle the Tongue of the late worthy Lord Mayor.*

*Pcis of Wales*

*Beckford.*

*2 of Hertford*

**“A Scene at St. Ja\_\_s’s or the Courtiers attempting to bridle the Tongue of the late worthy Lord Mayor.”  
London 1770  
(Lewis Walpole Library)**



“A Scene at St. Ja\_\_s or the Courtiers attempting to bridle the Tongue of the late worthy Lord Mayor.”

London 1770

(Lewis Walpole Library)



The FEMALE BRUISERS.

*Engraved after an Original Picture, in the Possession of Tho. Browne Esq.*

LONDON: Published by HENRY PARKER, No 11 Cornhill, and THOMAS BROADBENT, No 10 Fleet Street, at the Art Shop, in the City.

**"The FEMALE BRUISERS"**  
by John Goldar, Published by Henry Parker 1770  
(Lewis Walpole Library)



**"The FEMALE BRUISERS"**  
by John Goldar, Published by Henry Parker 1770  
(Lewis Walpole Library)



*Dessiné par Le Clerc*

*Gravé par Dupin*

*Petite Maitresse en Robe à la Polonoise de toile peinte  
garnie de mousseline, lisant une lettre*

*À Paris chez Esnauts et Rapilly rue S.<sup>t</sup> Jacques à la Ville de Couances. A. P. D. E.*

44  
12 98

"Petite Maitresse en Robe à la Polonoise de toile..."  
by Pierre - Thomas LeClerc, Engraved by Nicholas Dupin, Published by Esnauts et Rapilly 1778  
(Museum of Fine Arts, Boston)



*Dessiné par Le Clerc*

Elégante en petite robe de Taffetas des Indes rayé, garnie en Pouf,  
la garniture de même étoffe.

*Gravé par Dupin*

*A Paris chez Esnauts et Rapilly, rue St Jacques, à la Ville de Coutances. A.P.D.R.*

"Elégante en petite robe de Taffetas de Indes rayé..."  
by Pierre - Thomas LeClerc, Engraved by Nicolas Dupin, Published by Esnauts et Rapilly 1778  
(Museum of Fine Arts, Boston)



"Elégante en petite robe de Taffetas de Indes rayé..."  
by Pierre - Thomas LeClerc, Engraved by Nicolas Dupin, Published by Esnauts et Rapilly 1778  
(Museum of Fine Arts, Boston)

J

9<sup>e</sup> Cahier des Costumes Français. 3<sup>e</sup> Suite d'Habillemens a la mode.



*Designé par Le Clerc*

*Gravé par Boyard*

Petite Maîtresse en Robe Lilas tendre garnie de gaze  
a la promenade au Palais Royal. 25

A Paris chez Esnaut et Rapilly, rue S<sup>t</sup> Jacques a la Ville de Costances Avec Priv. du Roi

44

"Petite Maitresse en Robe Lilas garnie..."

by Pierre - Thomas LeClerc, Engraved by Nicholas Dupin, Published by Esnauts et Rapilly 1778

(Museum of Fine Arts, Boston)



*Dessiné par LeClerc.*  
Robe à l'Anglaise de Pekin verd pomme la garniture de gaze unie avec une guirlande de fleurs, un Pouf de gaze d'Italie bordé de fleurs, le parfait Contentement Rose, les Souliers Rose, et la rosette blanche.

*Gravé par Dupin.*

*A Paris chez Esnauts et Rapilly, rue St. Jacques, à la Ville de Coutances. A. P. D. R.*

"Robe à l'Anglaise de Pekin verd pomme ..."

by Pierre - Thomas LeClerc, Engraved by Nicolas Dupin, Published by Esnauts et Rapilly 1778

(Museum of Fine Arts, Boston)



*Designé par Le Clerc*  
Cette Robe à la Circassienne d'un nouveau gout, est de gaze couleur de soufre, la garniture de gaze lilas tendre; le grand salbala et le bandeau qui règne dans la garniture est la même gaze que la robe, le fond des sabots aussi; il n'y a que les bandes de garnitures à tuyaux qui soient lilas, les rubans lilas, même celui de la coëffure.

*Gravé par Dupin*

*A Paris chez Esnauts et Rapilly, rue S<sup>t</sup> Jacques à la Ville de Coutances. Avec Priv. du Roi*

44

"Cette Robe à la Circassienne d'un nouveau gout..."  
by Pierre - Thomas LeClerc, Engraved by Nicolas Dupin, Published by Esnauts et Rapilly 1778  
(Museum of Fine Arts, Boston)



*Le Clerc del.*

*Le Beau sc.*

Robe à la Polonoise d'étoffe unie à coqueluchon.

20

*A Paris chez Esnauts et Rapilly rue S<sup>t</sup> Jacques à la Ville de Contances. A. P. D. R.*

"Robe à la Polonoise d'étoffe unie à coqueluchon."

by Pierre - Thomas LeClerc, Engraved by Pierre Adrien Le Beau, Published by Esnauts et Rapilly 1778

(Museum of Fine Arts, Boston)



*Designé par Le Clerc*

*Gravé par Dupin*

Habillement d'Athalie au théâtre de la Comédie Française. On la prise ici au moment où au  
désespoir du couronnement de Joas elle l'écrie avec violence, Dieu des Juifs.....tu l'emportes.

*A Paris chez Esnauts et Rapilly rue S. Jacques a la Ville de Coutances. Avec Pr. du Roi.*

"Habillement d'Athalie au théâtre..."

by Pierre - Thomas LeClerc, Engraved by Nicolas Dupin, Published by Esnauts et Rapilly 1779

(Museum of Fine Arts, Boston)



*Dessiné par Le Clerc* *Gravé par Le Roy*

Polonoise de toile bleue et blanche vermicelée garnie à plat de bandes de toile  
peinte de toutes couleurs sur fond blanc.

*A Paris chez Esnauts et Rapilly, rue S<sup>t</sup> Jacques à la Ville de Coutances. A. P. D. R.*



"Polonoise de toile bleue et blanche vermicelée..."  
by Pierre - Thomas LeClerc, Engraved by C. LeRoy, Published by Esnauts et Rapilly 1779  
(Museum of Fine Arts, Boston)



*Dessiné par le Clerc*  
 Robe à la Turque ou espèce de Circassienne, mais différ<sup>te</sup> des autres; elle a un collet comme une robe en Levite, et une très grande écharpe blanche nouée à la ceinture; le jupon coupé; aucune garniture. Cette robe dont nous donnerons le développement de profil et par derrière, attira tous les yeux du Public, lorsqu'elle parut pour la première fois au Palais Royal, au mois de juillet dernier 1779

*Gravé par Voysard*

*A Paris chez Esnauts et Rapilly rue S<sup>t</sup> Jacques a la Ville de Coutances. A. P. D. R.*

44

"Robe à la Turquie..."

by Pierre - Thomas LeClerc, Engraved by Etienne Claude Voysard, Published by Esnauts et Rapilly 1779

(Museum of Fine Arts, Boston)



*Dessein par Desnois*  
 Jolie Danseuse vêtue d'un Caraco plissé et à gorgieretta de-coltée de taffetas d'Italie mordoré, avec un tablier de linon à fleurs pareil à la garniture du Caraco : les nœuds rosettes et rubans couleur de rose.  
*Dessiné par Voysard*

"Jolie Danseuse venue..."

by Pierre - Thomas LeClerc, Engraved by Etienne Claude Voysard, Published by Esnauts et Rapilly 1779  
 (Museum of Fine Arts, Boston)



"Jolie Danseuse venue..."

by Pierre - Thomas LeClerc, Engraved by Etienne Claude Voysard, Published by Esnauts et Rapilly 1779  
(Museum of Fine Arts, Boston)



Robe à l'Anglaise garnie à plis plats bordé d'un frisé de Mousseline, des tresses et boutons pareilles à la Robe; Chapeau garnie d'une toque de gaze négligemment ajusté avec un ruban . . .  
 A Paris chez Esnauts et Rapilly, Rue S<sup>t</sup>. Jacques à la Ville de Coutances.

"Robe à l'Anglaise..."

by Pierre - Thomas LeClerc, Engraved by Pierre - Charles Baquoy, Published by Esnauts et Rapilly 1784  
 (Museum of Fine Arts, Boston)



Two Ladies  
by French School c. 1780  
(The Bowes Museum)

# Watch Ribbons



Vanitas - Still Life  
by Pieter Claesz (Dutch) c. 1625  
(Frans Hals Museum)



Vanitas with Violin & Glass Ball  
by Pieter Claesz (Dutch) c. 1628  
(Germanisches Nationalmuseum, Nuremberg)



Vanitas Still Life with the Spinario  
by Pieter Claesz (Dutch) c. 1628  
(Rijksmuseum)



Vanitas Still Life with the Spinario  
by Pieter Claesz (Dutch) c. 1628  
(Rijksmuseum)

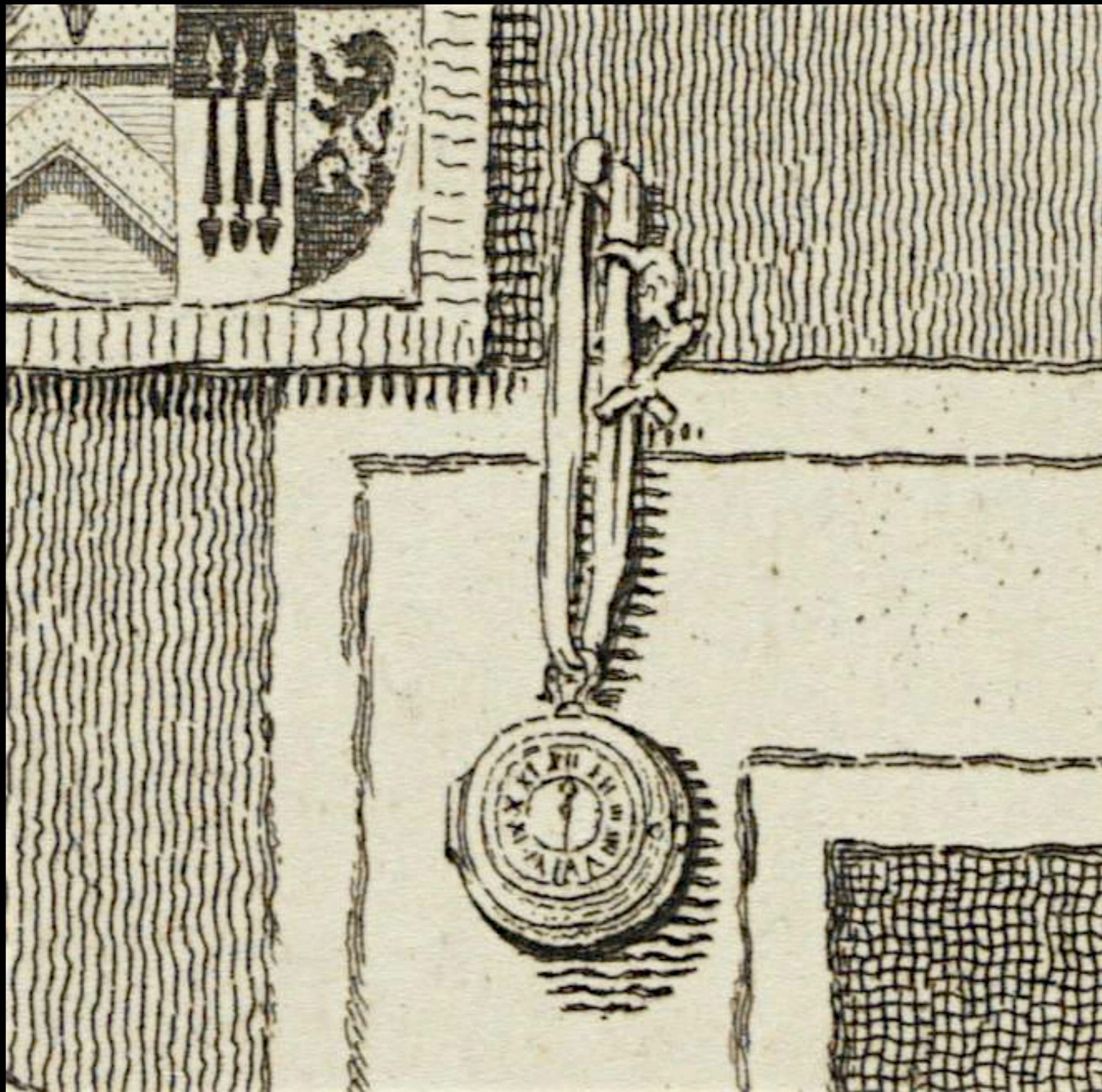


W<sup>m</sup> Hogarth del.

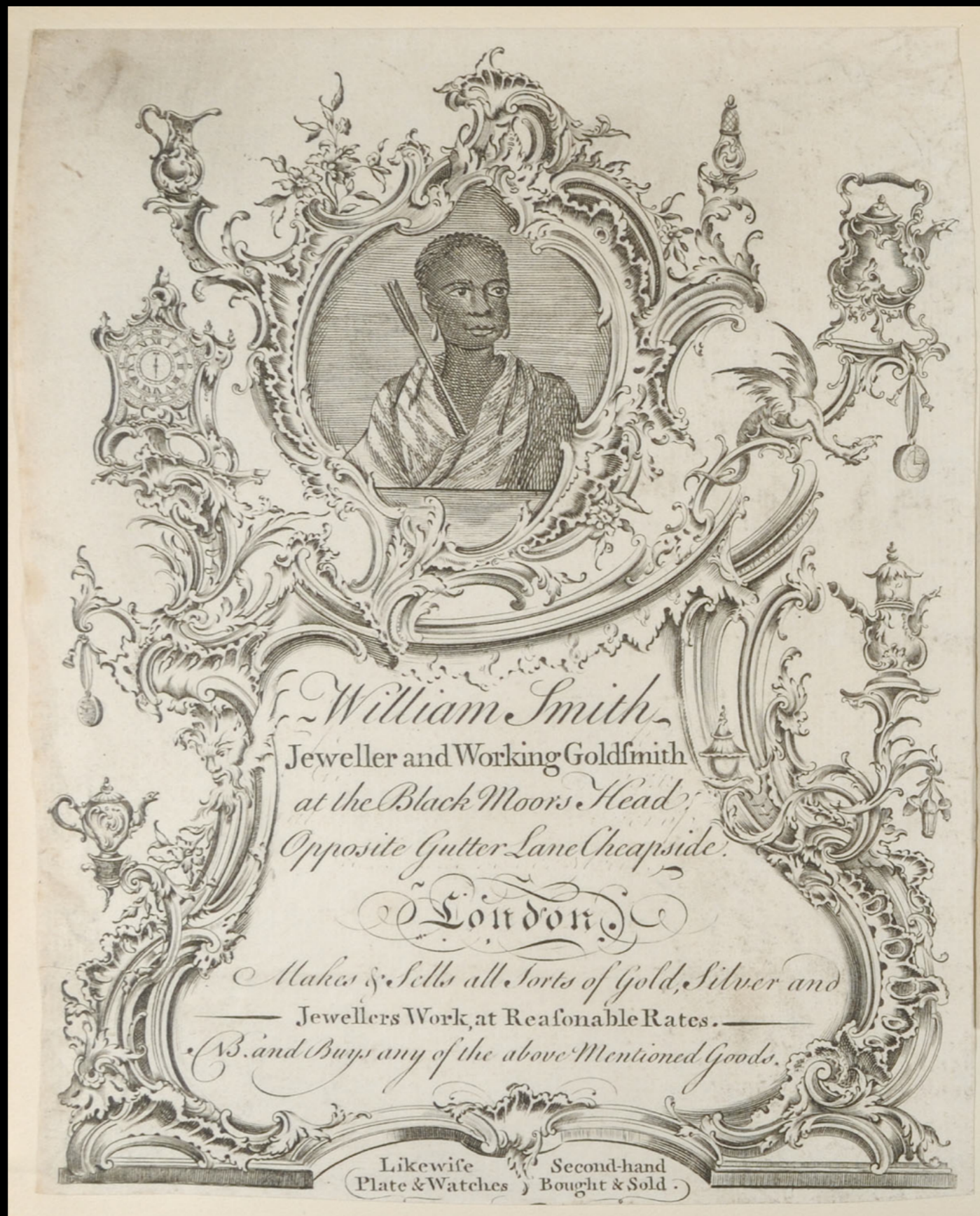
James Basire sculp.

T. MORELL, S.T.P. - S.S.A.

“T. MORELL, S.T.P. - S.S.A.”  
by James Basire, London 1762  
(Lewis Walpole Library)



"T. MORELL, S.T.P. - S.S.A."  
by James Basire, London 1762  
(Lewis Walpole Library)



English Trade Card for William Smith, "Jeweller and Working Goldsmith"  
18th Century  
(Lewis Walpole Library)



English Trade Card for William Smith, "Jeweller and Working Goldsmith"  
18th Century  
(Lewis Walpole Library)



English Trade Card for William Sterck, "Watch and Clock - Maker"  
18th Century  
(Lewis Walpole Library)



English Trade Card for William Sterck, "Watch and Clock - Maker"  
18th Century  
(Lewis Walpole Library)

# Watch Cords



Vanitas with Violin & Glass Ball  
by Pieter Claesz (Dutch) c. 1630  
(Getty Images)



French Silk & Metal Watch Cord with Key & Tassel Decorations  
18th Century  
(Metropolitan Museum of Art)



French Metal Watch Cord with Key & Tassel Decorations  
18th Century  
(Metropolitan Museum of Art)

# Tape Watch Chains



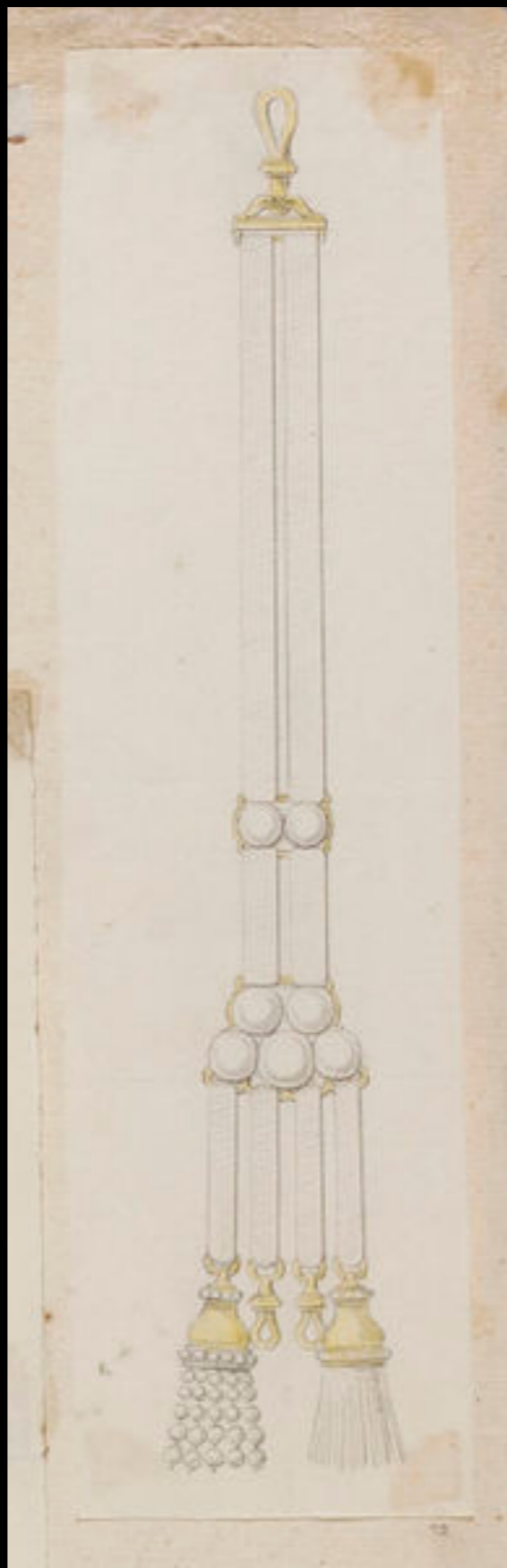
English Equipage Watch Chain of Metal & Silk Tape with Key & Tassel Decorations  
Late 18th Century  
(Metropolitan Museum of Art)



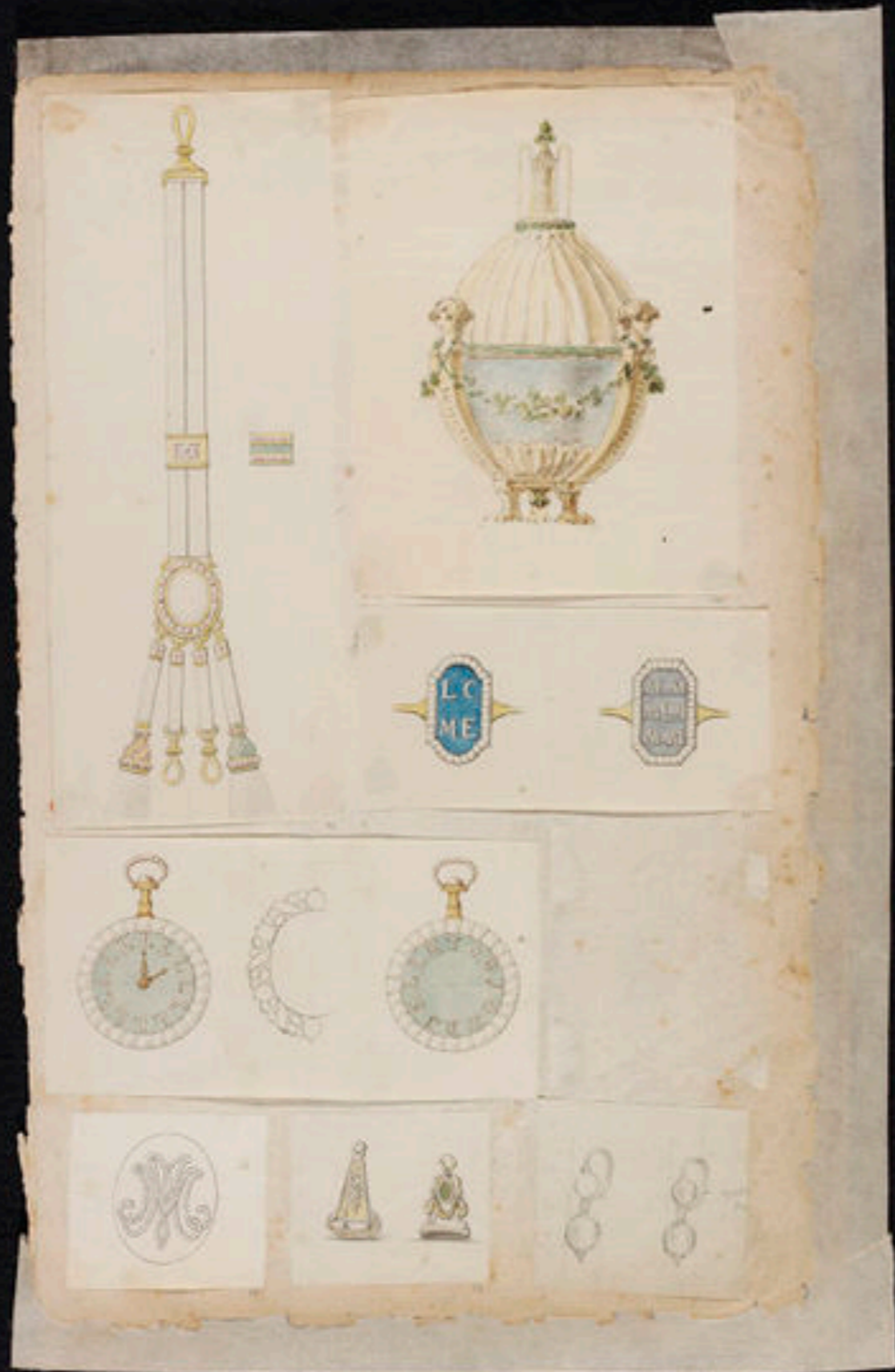
English Equipage Watch Chair of Hair Tape with Key & Tassel Decorations  
Late 18th Century  
(Metropolitan Museum of Art)



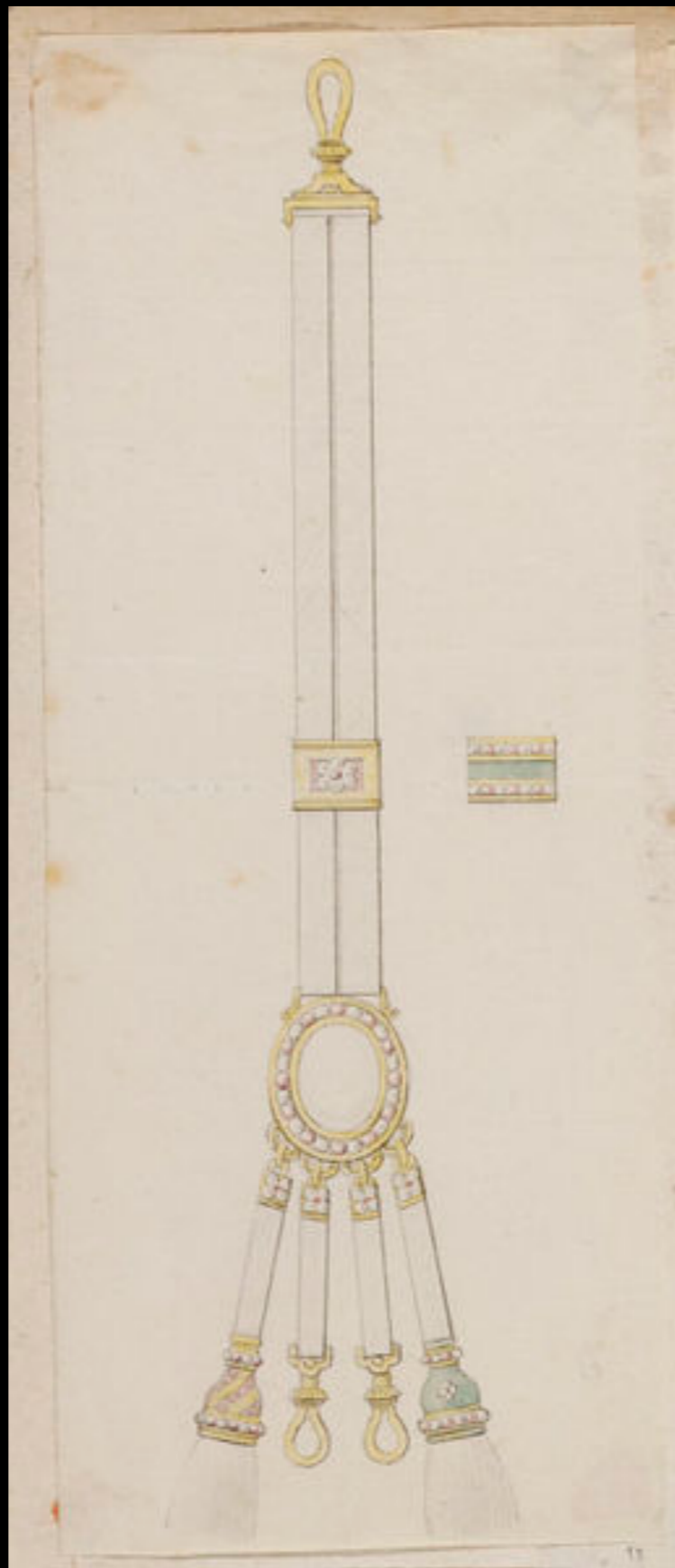
English Equipage Watch Chain of Silk Tape with Key & Decorations  
Late 18th Century  
(Metropolitan Museum of Art)



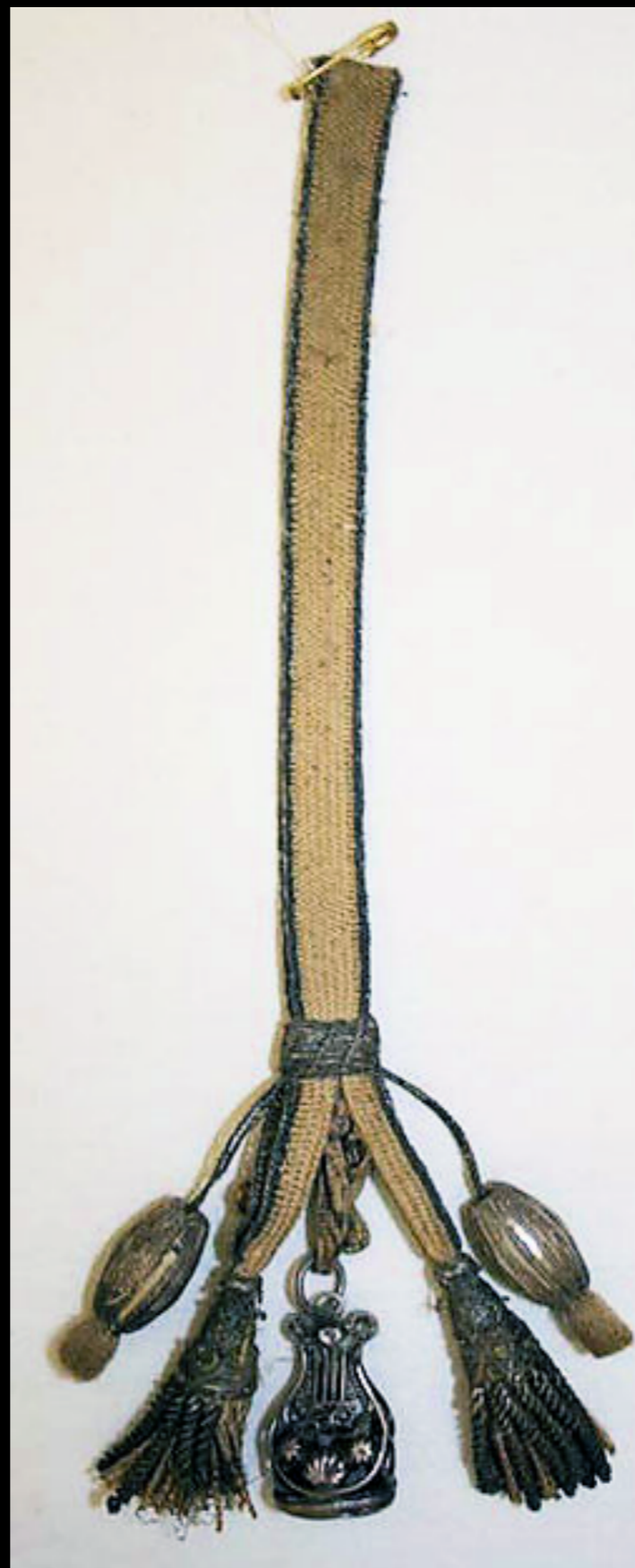
French Design for an Equipage Watch Chain of Tape  
c. 1760  
(Victoria & Albert)



French Design for an Equirage Watch Chain of Tape  
c. 1760  
(Victoria & Albert)



French Design for an Equipage Watch Chain of Tape  
c. 1760  
(Victoria & Albert)



French Equipage Watch Chain of Silk & Metal Tape with Key & Tassel Decorations  
18th Century  
(Metropolitan Museum of Art)



French Equipage Watch Chain of Silk Tape with Key and Tassel Decorations  
18th Century  
(Metropolitan Museum of Art)



French Equirage Watch Chain of Silk Tape with Key and Tassel Decorations  
18th Century  
(Metropolitan Museum of Art)



French Equipage Watch Chain of Silk Tape with Key and Tassel Decorations  
18th Century  
(Metropolitan Museum of Art)



French Equirage Watch Chain of Silk & Metal Tape with Key and Tassel Decorations  
18th Century  
(Metropolitan Museum of Art)



French Equipage Watch Chain of Silk Tape with Key and Tassel Decorations  
18th Century  
(Metropolitan Museum of Art)



French Equiptage Watch Chain of Linen Tape Decorated with Metal with Tassel Decorations  
18th Century  
(Metropolitan Museum of Art)



French Equipage Watch Chain of Silk & Metal Tape with Key and Tassel Decorations  
18th Century  
(Metropolitan Museum of Art)



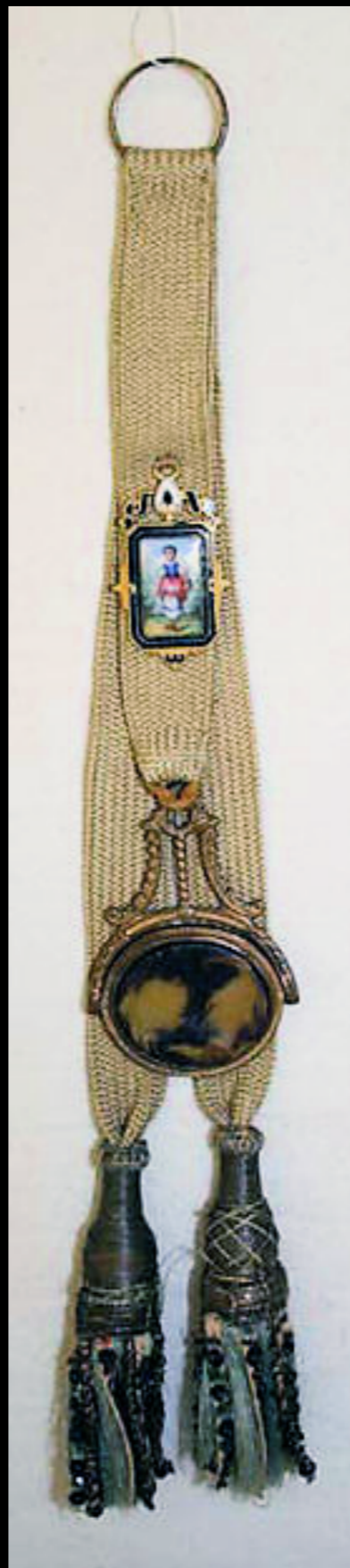
French Equipage Watch Chain of Silk Tape with Key and Tassel Decorations  
18th Century  
(Metropolitan Museum of Art)



French Equirage Watch Chain of Silk & Metal Tape with Key and Tassel Decorations  
18th Century  
(Metropolitan Museum of Art)



French Equirage Watch Chain of Silk & Metal Tape with Key and Tassel Decorations  
18th Century  
(Metropolitan Museum of Art)



French Equipage Watch Chain of Silk Tape with Seal and Tassel Decorations  
18th Century  
(Metropolitan Museum of Art)



French Equipage Watch Chain of Silk Tape Decorated with Glass with Key and Tassel Decorations  
Late 18th Century  
(Metropolitan Museum of Art)

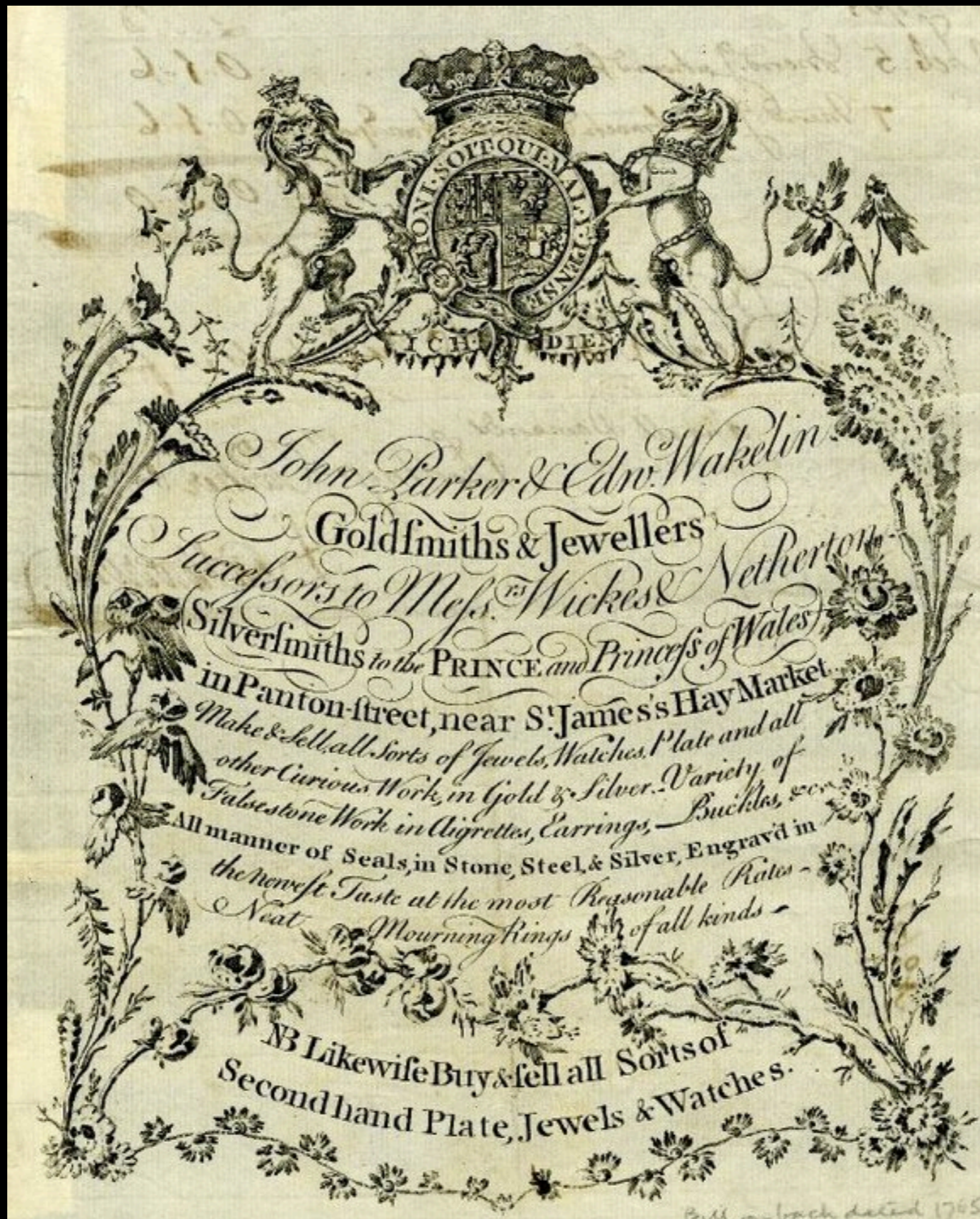


French Equipage Watch Chain of Linen & Metal Tape with Key and Tassel Decorations  
18th Century  
(Metropolitan Museum of Art)



French Equirage Watch Chain of Linen & Metal Tape Decorated with Glass with Key and Tassel Decorations  
Late 18th Century  
(Metropolitan Museum of Art)

# English Watch Chains



English Trade Card  
18th Century  
(The British Museum)

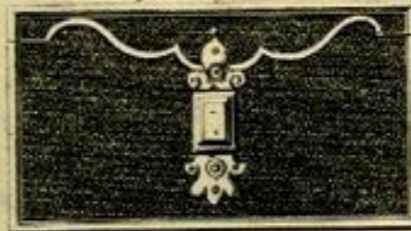


English Trade Card  
18th Century  
(The British Museum)



*H. Pugh*  
In Raquett-Court Fleet-Street,  
*London.*

*Makes and Sells all sorts of Curiosities, in  
Gold, Silver, Amber and Tortoise-shell.  
Viz. Instrument Cases, Tooth-pick Cases,  
Snuff Boxes, Essence Bottles, all Sorts  
of Canses, Shagreen Pocket Books &c.*



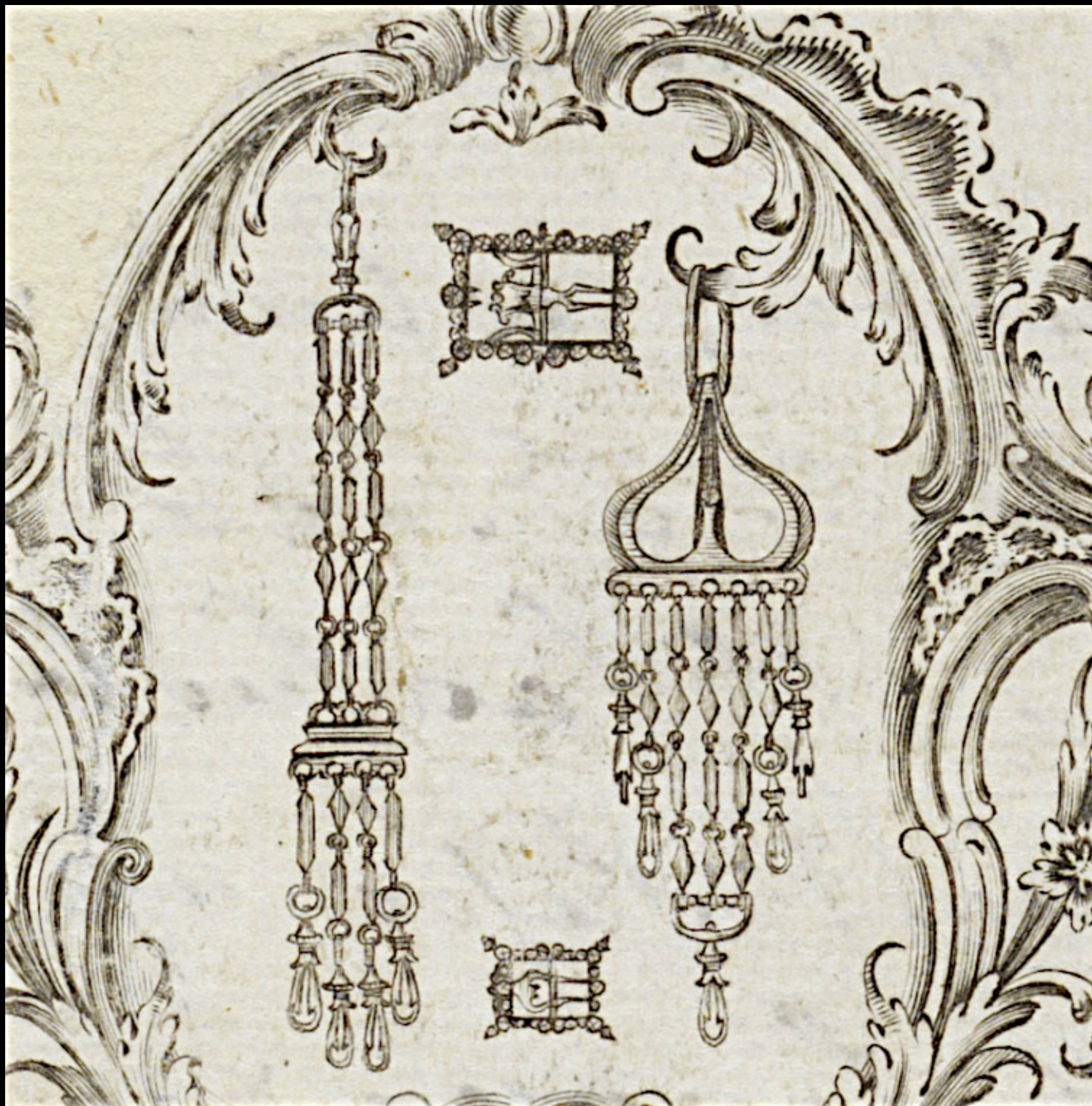
*H. Pugh dans Raquette Court dans  
la rue de Fleet-Street a Londres.  
Fait, et Vend, toutes sortes de Curiositez,  
en Or, Argent, Ambre, et Ecaille de Tortue,  
c'est a dire Etuis d' Instruments, Etuis  
de Curedents, Tabatières, Bouteilles a Essence,  
toutes sortes de Canses, Porte  
Lettres de Chagrin &c.*

67.333

English Trade Card  
18th Century  
(The British Museum)



English Trade Card  
18th Century  
(Lewis Walpole Library)



English Trade Card  
18th Century  
(Lewis Walpole Library)



English Gilt Brass & Silver Watch with Chain  
by Edmund Day of London c. 1695  
(Victoria & Albert)



English Silver Watch with Cut Steel Equipage Watch Chain, Crank Key, & Seal  
by Charles Bayley of London c. 1720  
(Bonhams)



English Silver Pocket Watch with Scottish Gilted Blue Steel Equipage Watch Chain  
“Presented to Capt. Horatio Nelson. R.N. on his Marriage by the crew of H.M.S. BOREAS March 11th 1787”  
by “Jas. Smith / Edinburgh” Hallmarked for 1787  
(National Maritime Museum, Greenwich)



Cut Steel Equipage Watch Chain with Key & Seal  
18th - Early 19th Century  
(Niels Hobbs Collection)



Cut Steel Equpage Watch Chain with Key & Seal  
18th - Early 19th Century  
(Niels Hobbs Collection)

English  
Hooked  
Watch Chains



*Joseph Wright*

*(Successor to the late M<sup>r</sup>. Tisdale)*

Working-Goldsmith, & Water-Gilder.

*at the Ring & Chain, in Cross Street,*

Hatton Garden,

*London.*

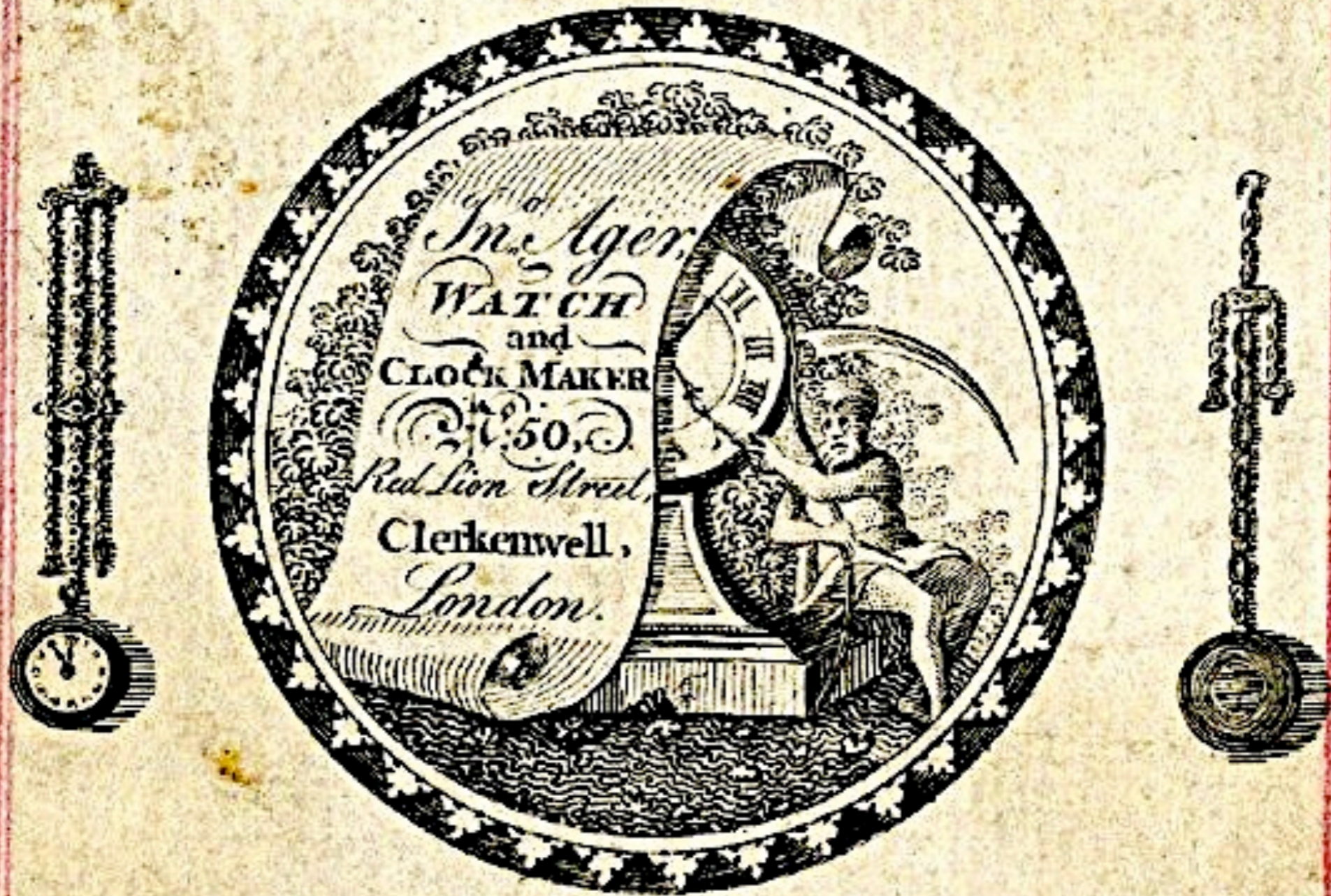
*Makes & Sells all sorts of Gold Chains and  
Spring Swivels; & all sorts of Buckles, Beads,  
Lockets, Buttons, Sockets for Corrals, Earrings,  
Seals & Rings and all Sorts of Gold, Silver  
& Jewelling Work.*

Also all sorts of Gold Pendants, Silver and Metal Chains Gilt  
and all sorts of Gold & Silver Tweezers. & Metal Gilt.

English Trade Card

c. 1750

(The British Museum)



*C. L. Hannell. Sculp.*

Trade Card of Jonathan Ager, Watch and Clock - Maker  
Late 18th Century  
(The British Museum)



Design for Enameled Watchcase  
by George Michael Moser (Swiss, Active in London) c. 1766  
(Metropolitan Museum of Art)



English Gold , Precious Stones, & Enamel Watch with Hooked Equipage Watch Chain, Key, & Seal  
by James Debauffre c. 1725 - 1750  
(Tyler Museum of Art)



English Gilt Pair Cased Watch with Verge Movement with Hooked Equipage Watch Chain  
by G. Weldon of London 1728  
(Cogs & Pieces, Antique Pocket Watches)



English Gilt Pair Cased Watch with Verge Movement with Hooked Equipage Watch Chain  
by G. Weldon of London 1728  
(Cogs & Pieces, Antique Pocket Watches)



English Gilt Pair Cased Watch with Verge Movement with Hooked Equipage Watch Chain  
by G. Weldon of London 1728  
(Cogs & Pieces, Antique Pocket Watches)



English Gold & Gilt Watch with Hooked Equipage Watch Chain, Bloodstone Egg Pomander, & Crystal Seal  
by Nathaniel Hunt c. 1742 - 1743  
(Victoria & Albert)



English Silver Hooked Equipage Watch Chain  
by Depros of London c. 1750  
(Cogs & Pieces, Antique Pocket Watches)



English Silver Hooked Equipage Watch Chain  
by Depros of London c. 1750  
(Cogs & Pieces, Antique Pocket Watches)



English Silver Hooked Equipage Watch Chain  
by Depros of London c. 1750  
(Cogs & Pieces, Antique Pocket Watches)



English Gold Hooked Equipage Watch Chain with Crystal Seal  
by Nathaniel Hunt c. 1760 - 1770  
(Victoria & Albert)



English Gold Hooked Equipage Watch Chain with Crystal Seal  
by Nathaniel Hunt c. 1760 - 1770  
(Victoria & Albert)



English Gold Watch with Hooked Equipage Watch Chain & Etuis  
Watch by Robert Cawley of Chester c. 1755 - 1756, Etuis c. 1730  
(Museum of Fine Arts, Boston)



English Gold Watch with Hooked Equipage Watch Chain, Key & Seals  
by Henry Fish of London c. 1740  
(Colonial Williamsburg Foundation)



English Gold Watch with Hooked Equipage Watch Chain  
by John Rich of London c. 1740  
(Metropolitan Museum of Art)



English Gold & Gilt Metal Hooked Equipage Watch Chain  
by William Hunt c. 1740 - 1760  
(Victoria & Albert)



English Gold & Polychrome Enamel Watch with Hooked Equipage Watch Chain  
by Henry Hindley of London c. 1750  
(Sotheby's)



English Gold & Enamel Watch with Hooked Equipage Watch Chain, Key, & German Pendant  
by John Pyke of London c. 1750  
(The British Museum)



English Gold & Enamel Watch with Hooked Equipage Watch Chain, Key, & German Pendant  
by John Pyke of London c. 1750  
(The British Museum)



English Gold & Enamel Watch with Hooked Equipage Watch Chain with Chains  
by John Pyke of London c. 1750  
(The British Museum)



English Gold & Enamel Watch with Hooked Equipage Watch Chain with Chains  
by John Pyke of London c. 1750  
(The British Museum)



English Gilt Watch with Hooked Equipage Watch Chain, Key, Charms, & Pomander  
c. 1761  
(New York Historical Society)



English Gold Watch with Hooked Equipage Watch Chain, Seals, & Pomanders  
London c. 1767 - 1768  
(Private Collection)



English Gilt Watch with Hooked Equipage Watch Chain, Key, & Pomander  
by "Thomas Hayton/watch maker at Ye/ Golden Eagle in Lee Street/in Red Lyon Square/London" c. 1770  
(Museum of Fine Arts, Boston)



English Steel & Enamel Equipage Watch Chain  
c. 1770 - 1785  
(Museum of London)



English Steel with Gold Decoration Hooked Equipage Watch Chain

c. 1770  
(Victoria & Albert)



English Gold & Enamel Watch with Hooked Equipage Watch Chain & Key  
by Perigal of London c. 1770  
(Sotheby's)



English Gold & Enamel Watch Featuring King George III & Queen Charlotte with Hooked Equipage Watch Chain & Key  
Purchased by the Eminent Physician, Sir James Napier, in 1779 c. 1777  
(The British Museum)



English Gold & Enamel Watch with Hooked Equipage Watch Chain  
c. 1779 - 1780  
(The British Museum)



English Gold & Enamel Watch with Hooked Equipage Watch Chain & Key  
by Daniel de St. Leu of London, Watchmaker to King George III c. 1775  
(Walters Art Museum)



English Gold Repousse Pair Cased Watch with Verge Movement with Hooked Equipage Watch Chain  
by Nathaniel Eagle of London c. 1780  
(Cogs & Pieces, Antique Pocket Watches)

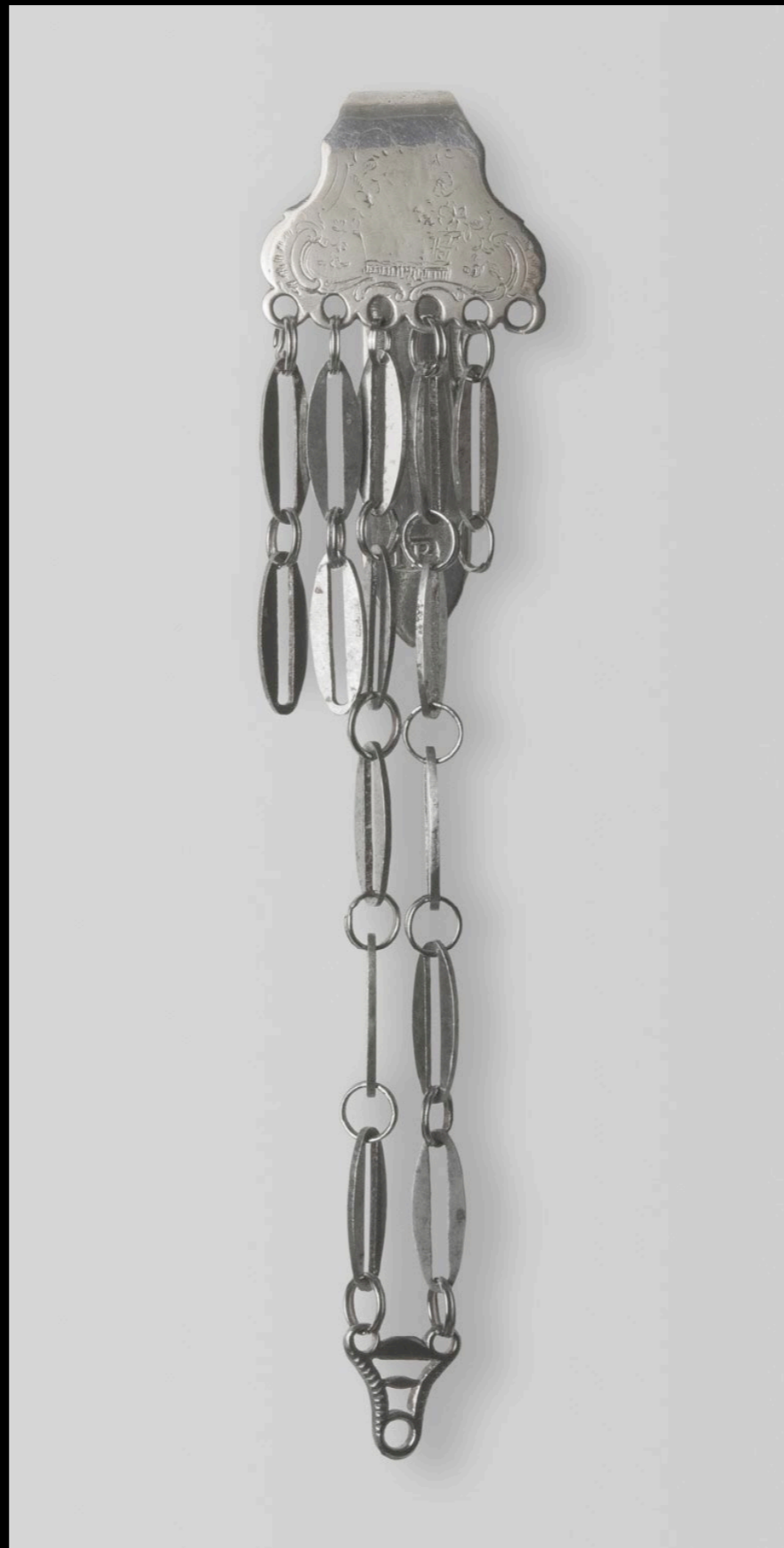


English Gold & Cameo Watch with Cut Steel & Gilt Hooked Equipage Watch Chain  
Cameo Depicting Minerva - Roman Goddess of Wisdom - by the Wedgwood Factory c. 1790  
(Museum of Fine Arts, Boston)



English Cut Steel Hooked Equipage Watch Chain  
by Mathew Bolton c. 1790  
(Victoria & Albert)

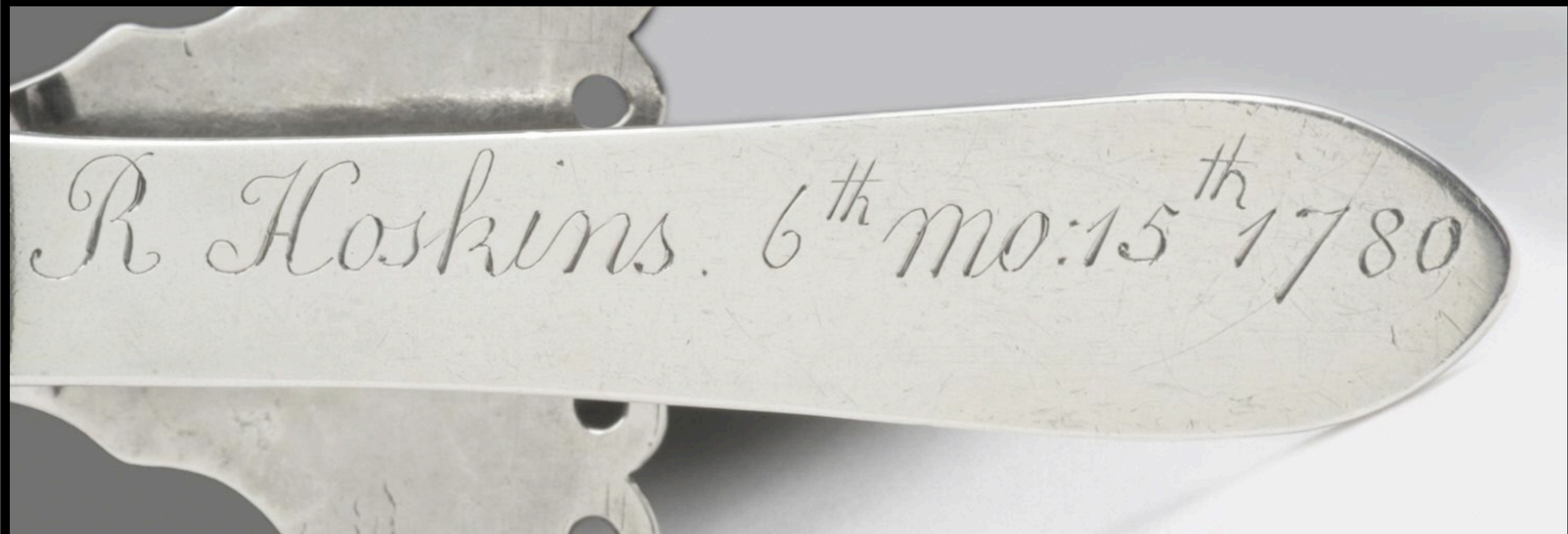
American  
Hooked  
Watch Chains



American Silver Watch Chain  
by Joseph Richardson, Sr. 1748  
(Philadelphia Museum of Art)



American Silver Equiptage Chain Hook  
by Joseph and Nathaniel Richardson 1780  
(Philadelphia Museum of Art)

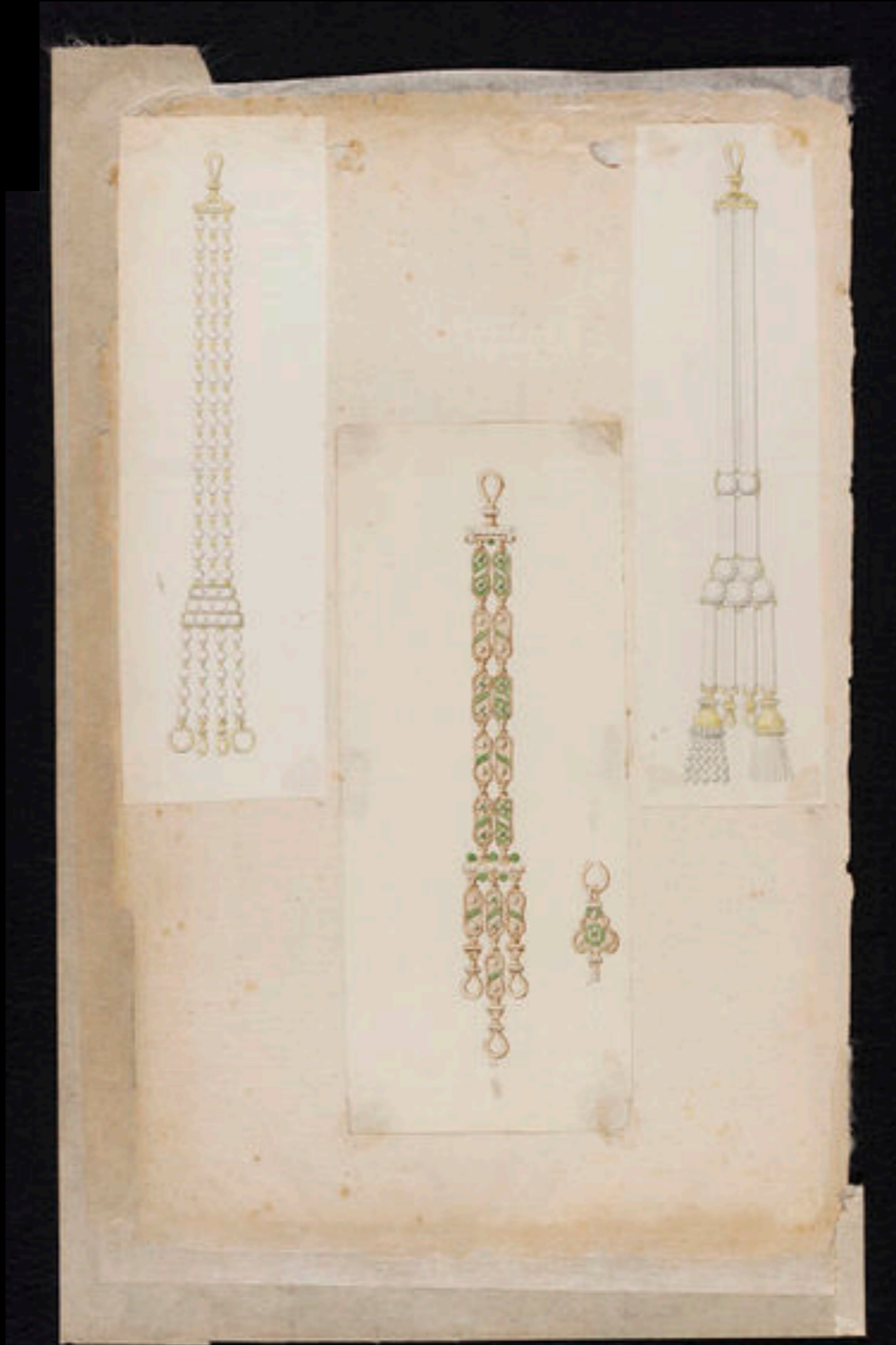


American Silver Equipage Chain Hook  
by Joseph and Nathaniel Richardson 1780  
(Philadelphia Museum of Art)

# French Watch Chains



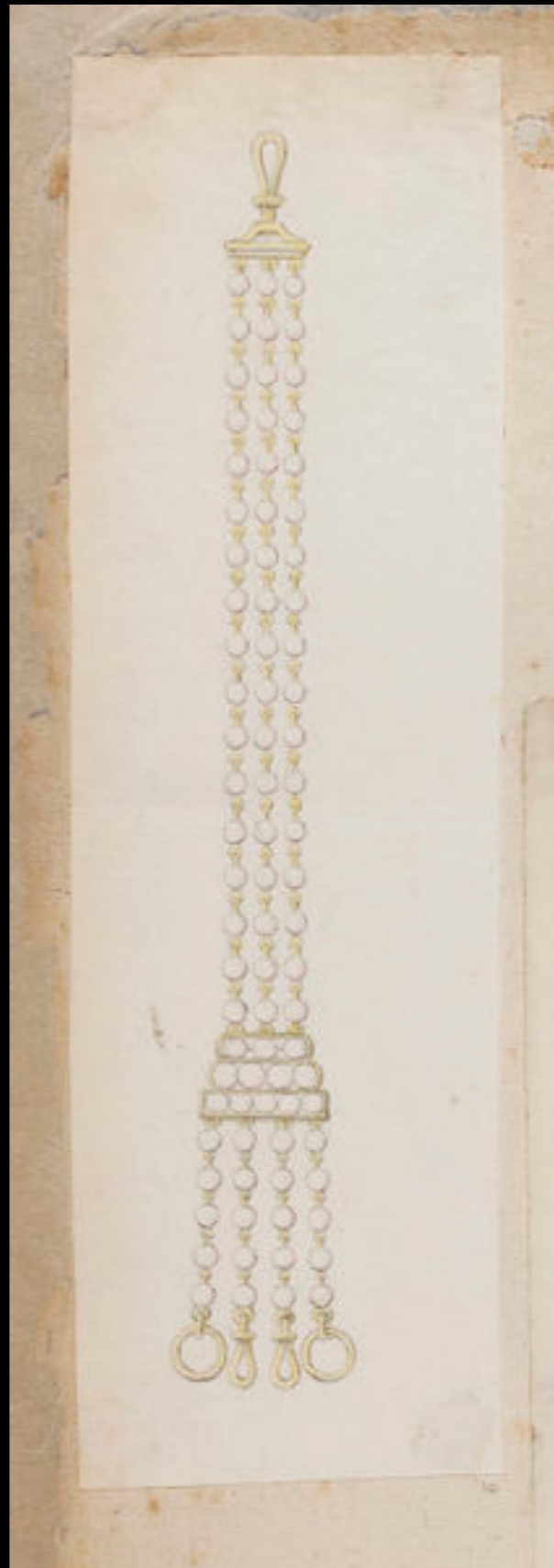
French Design for a Watch Chain  
c. 1760  
(Victoria & Albert)



French Design for a Watch Chain

c. 1760

(Victoria & Albert)



French Design for a Watch Chain  
c. 1760  
(Victoria & Albert)



French Design for a Watch Chain  
c. 1760  
(Victoria & Albert)

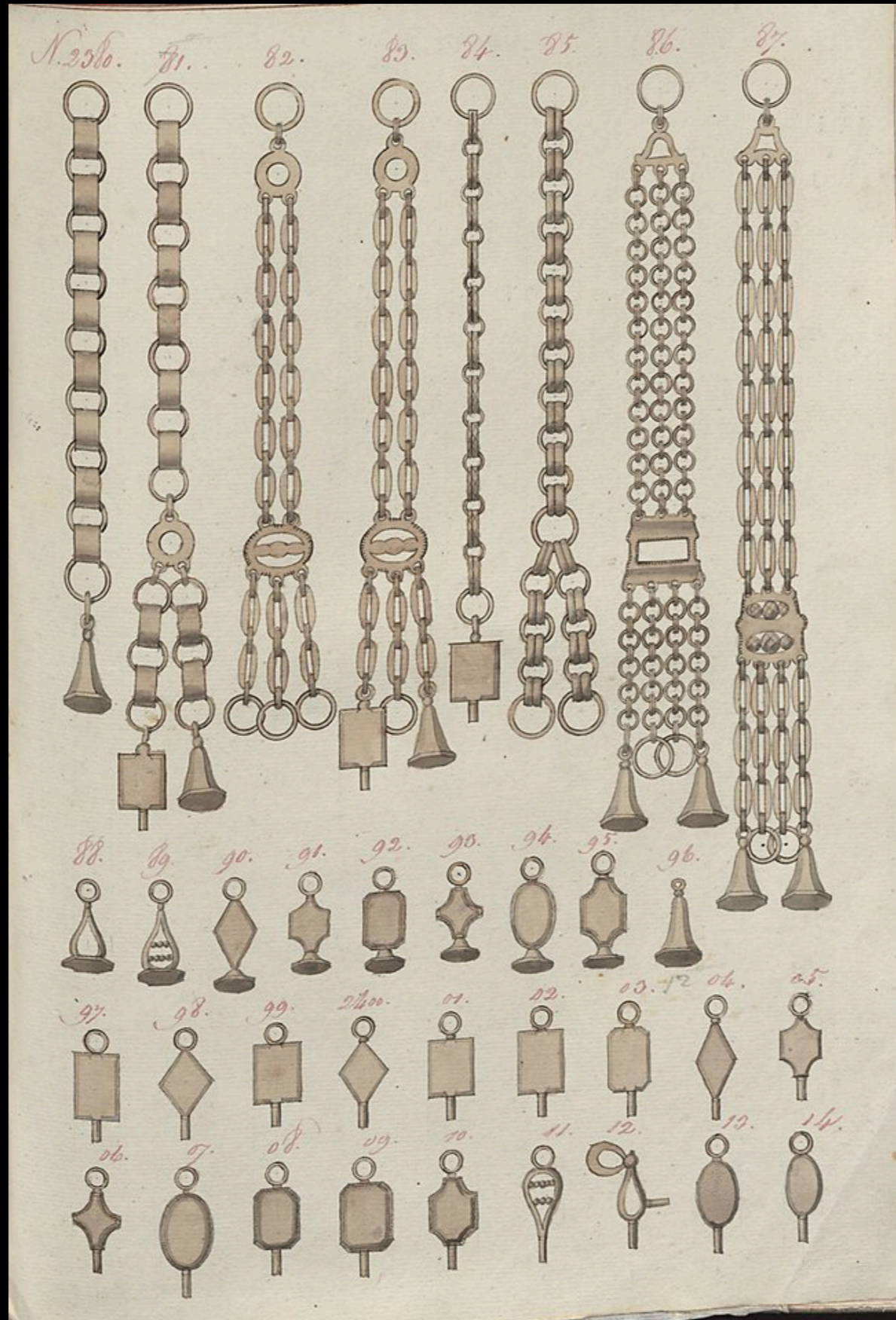


French Silver Cased Watch with a Cut Steel Chain, Key, & Seals  
by Estienne Hubert of Rouen, France c. 1650  
(National Maritime Museum)



Oval Silver Watch with Chain  
c. 1610 - 1620  
(The British Museum)





Watch Chains, Seals, & Keys  
 Need information on this - Anyone have it????

French  
Hooked  
Watch Chains



French Gold Watch with Equipage Watch Chain Set with Topazes & Diamonds, Seal & Key  
by Julien Le Roy of Paris c. 1760  
(Victoria & Albert)



French Enamel Verge Watch with Hooked Equipage Watch Chain, Key, & Seals  
by Julien Le Roy of Paris c. 1760  
(Koller Auctions)



French Gold Gilt & Enamel with Hooked Equipage Watch Chain & Charms  
Paris c. 1767  
(Louvre)



French Gold Gilt & Enamel Watch with Hooked Equipage Watch Chain  
Marked "AGERON No. 32" from Paris c. 1770  
(DROUT.COM)



French Gold & Enamel Watch with Hooked Equipage Watch Chain, Key, & Seal  
by Jean-Antoine Lepine (1720-1814) Watchmaker; Hologer to the King c. 1774 - 1775  
(Rococo Revisited)



French Gold & Jasper, & Agate Watch with Hooked Equipage Watch Chain, Key, & Seal  
Paris c. 1778 - 1779  
(Louvre)



French Gilt & Enamel Watch with Hooked Equipage Watch Chain & Charms  
Paris c. 1767 - 1800  
(Louvre)



French Gold & Diamond Watch with Hooked Equipage Watch Chain, Key, & Chain  
Paris c. 1767 - 1800  
(Louvre)



French Gold Watch with Hooked Equipage Watch Chain, Key, & Seal  
18th Century  
(Rococo Revisited)



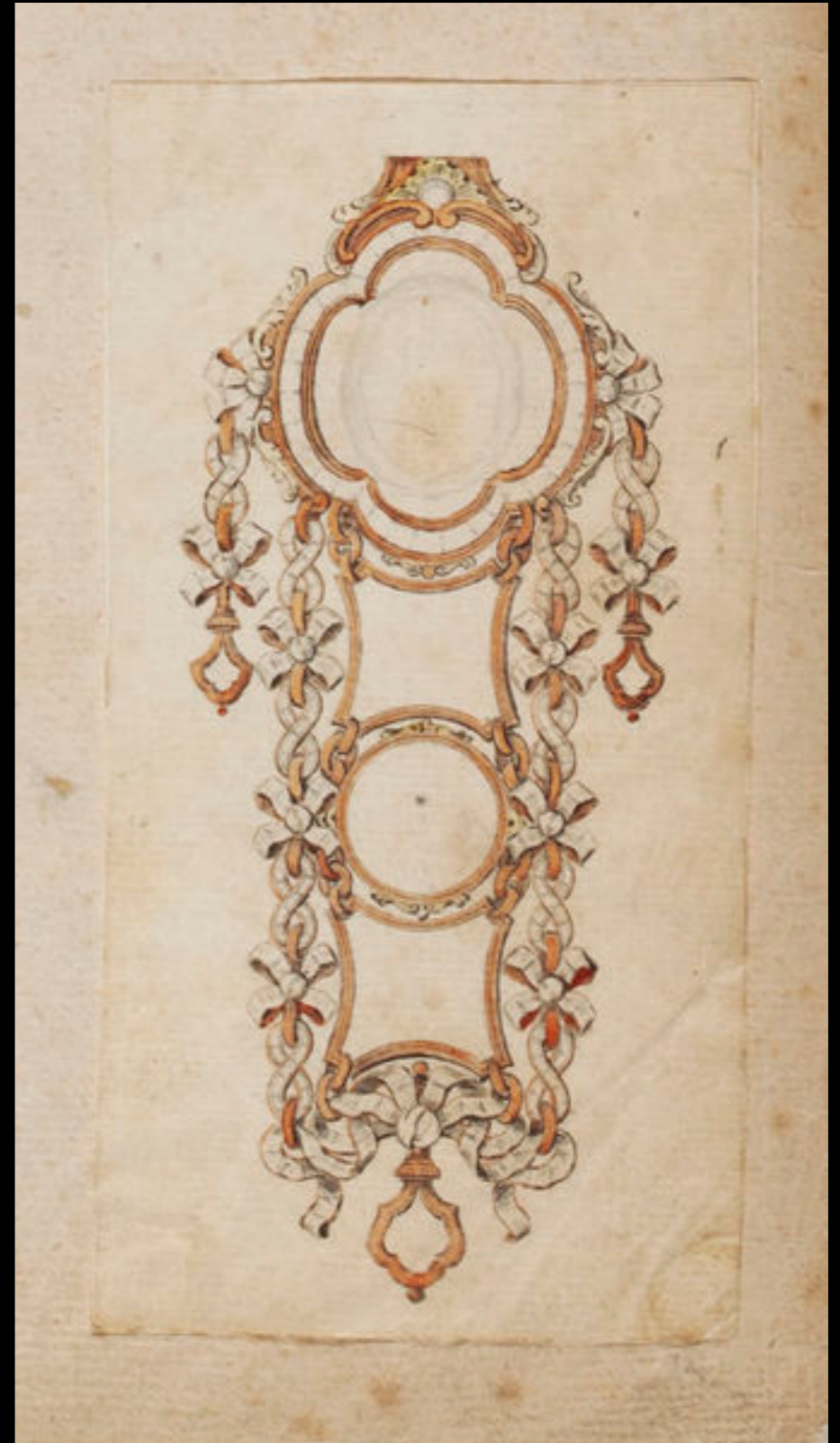
French Gold Hooked Equipage Watch Chain  
18th Century  
(Versilles)



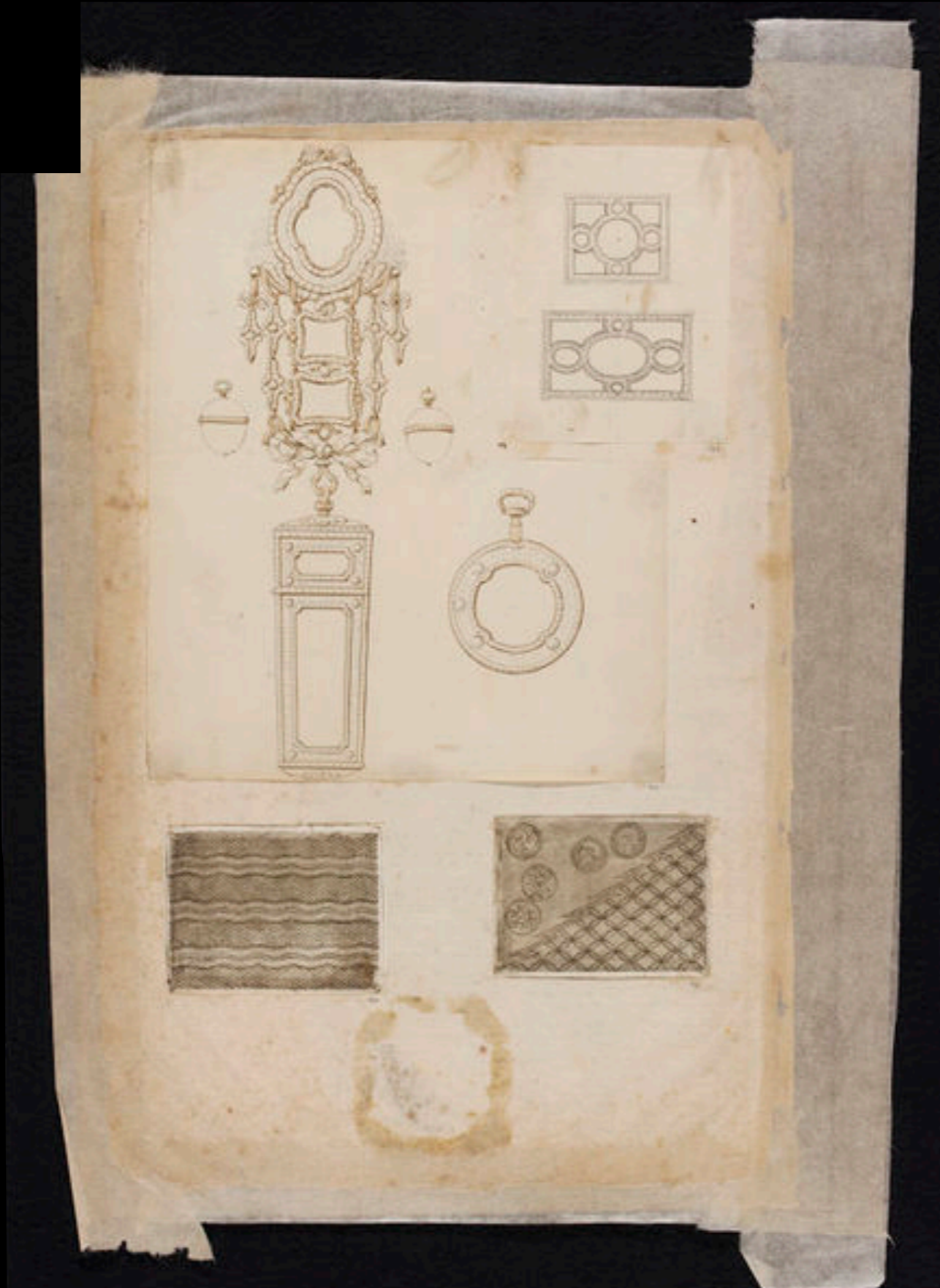
French Gold & Enamel Hooked Equipage Watch Chain  
18th Century  
(Versailles)



French Gold Hooked Equipage Watch Chain with Key & Seal  
by Jeantet-Violet 18th Century  
(Versailles)



French Design for a Hooked Watch Chain  
by Jean Durcollay c. 1755  
(Victoria & Albert)



French Design for a Watch Chain  
c. 1765  
(Victoria & Albert)

# German Watch Chains



German White Metal Watch Chain with Charms & Seal  
Late 18th Century  
(Metropolitan Museum of Art)

German / Austrian  
Hooked  
Watch Chains



Austrian Gold & Enamel Watch with Hooked Equipage Watch Chain  
by Philipp Ernst Schindler III of Vienna c. 1760  
(Victoria & Albert)



German Gold, Agate, & Precious Stones Watch with Hooked Equipage Watch Chain, Key, & Seal  
by V. Blanck of Regensburg c. 1775  
(Metropolitan Museum of Art)



Landwing Augsburg Silver Repousse Cased Verge Watch with Silver Hooked Equipage Watch Chain, Key, Seal, Pencil, & File

c. 1780

(Heritage Auctions)



Landwing Augsburg Silver Repousse Cased Verge Watch with Silver Hooked Equipage Watch Chain, Key, Seal, Pencil, & File

c. 1780

(Heritage Auctions)

“European”  
Hooked  
Watch Chains



European Brass Hooked Watch Chain  
Late 18th Century  
(Metropolitan Museum of Art)



European Brass Hooked Equipage Watch Chain  
Late 18th Century  
(Metropolitan Museum of Art)

# False Watches “Fausse Montre”



English Gilt False Watch or "Fausse Montre" with a Hooked Equipage Watch Chain, Key & Seal  
c. 1770 - 1785  
(Museum of London)



**Figure 6.173. Pewter false watches.**

Pewter False Watches or “Fausse Montres”

Recovered from the Roosevelt Inlet Shipwreck, Delaware c. 1770s

(The Roosevelt Inlet Shipwreck: Identification, Analysis and Historical Context” by Bridget Christine McVae, St. Mary’s College)



English Portrait Miniature of Major - General William Phillips of the Royal Artillery in a "Fausse Montres" Frame  
by Richard Crosse c. 1760  
(Philip Mould)



English Portrait Miniature of Mrs. Townley Ward in a Silver & Paste "Fausse Montres" Frame  
by John Smart 1782  
(Christie's)



English Portrait Miniature of a Lady in a Gilt & Half Pearl "Fausse Montres" Frame  
by George Engleheart 1780s  
(Philip Mould)



*Invenit per Le Clerc*

*Gravit per Dupin*

**LES DÉLASSEMENS DU BOIS DE BOULOGNE.**

Robe de taffetas uni d'une couleur tendre, garnie de même. L'habit fond Jaunatre, moucheté, veste et culotte blanches.

*A Paris chez Renauds et Rapilly rue St Jacques la Ville de Contancez. A. R. D. R.*

"Les Délassemens du Bois de Boulogne. Robe de taffetas..."  
by Pierre - Thomas LeClerc, Engraved by Nicolas Dupin, Published by Esnauts et Rapilly 1778  
(Museum of London)

R

99



*Designé par Le Clerc*

*Gravé par Ponce*

Fraque à coqueluchon de pluche de soie rouge sans boutonniere par devant, doublé de même étoffe noire: les manches à paremens et pattes noires, la veste de tricot chiné, la culotte de Calmande rouge, des bas à côtes.

*A Paris chez Esnauts et Rapilly, rue St Jacques, à la Ville de Couances. A.P.D.R.*

44

"Fraque à coqueluchon de pluche de soie rouge..."

by Pierre - Thomas LeClerc, Engraved by Charles Emmanuel Jean Baptiste, Published by Esnauts et Rapilly 1778

(Museum of Fine Arts, Boston)



Redingotte à collet et à bavaroise un peu ajustée pour monter à cheval, veste du matin à bavaroise bordée d'une tresse à l'Anglaise et culotte de peau.

A Paris chez Esnauts et Rapilly rue S. Jacques, à la Ville de Coustances. A. P. D. R.

"Redingotte à collet et à bavaroise un peu ajustée pour monter à cheval..."

by Pierre - Thomas LeClerc, Engraved by Charles Emmanuel Jean Baptiste, Published by Esnauts et Rapilly 1779  
(Museum of Fine Arts, Boston)



*Le Clerc del.*  
 Petit Maitre en Chenille Fraque de couleur à la mode Veste de soie à bordure en broderie de soie de di  
*Dupin sculp.*  
 verses couleurs, les Boutons du Fraque d'argent à jour- il est coëffé d'un Chapeau à la Pensilvanie .

*A Paris chez Esnauts et Rapilly rue S<sup>t</sup>. Jacques a la Ville de Coutances . A . P . D . R .*



"Petit Maitre en chenille Fraque de couleur à la mode Veste...."  
 by Pierre - Thomas LeClerc, Engraved by Nicolas Dupin, Published by Esnauts et Rapilly 1781  
 (Museum of Fine Arts, Boston)



"Petit Maitre en chenille Fraque de couleur à la mode Veste...."  
by Pierre - Thomas LeClerc, Engraved by Nicolas Dupin, Published by Esnauts et Rapilly 1781  
(Museum of Fine Arts, Boston)

# Watch Seals



English Gold & Glass Watch Seal  
Stamped with the Order of the Bath & Family Arms of Jeffrey Amherst, British Commander of North America  
18th Century  
(Colonial Williamsburg Foundation)



Gold & Glass Watch Seal  
Owned by George Washington  
18th Century  
(Winterthur)



English Silver Hunting Seal with Dog & Hare

c. 1730

(Private Collection)



English Silver Hunting Seal with Stag  
c. 1730  
(Private Collection)



English Silver Watch Seal  
c. 1775  
(McCord Museum)



English Silver Watch Seals  
18th Century  
(Christie's)



Watch Seal with 3 Masted Naval Vessel  
Late 18th Century  
(Ruby Lane)



ROBT ANDERSON  
Co: JEWELLER'S

Sells the Following Goods,

*Viz Gold, Silver, & Pinchbeck Watches,  
Gold set Seals, & Trinkets, Silver Coffee  
Pots, Tankards, Pints & half Pints, Silver  
Waiters, Candlesticks, Castors, & Sauce Boats,  
Soup Spoons, Cream Jugs, Salts & Punch  
Saddles, Table Spoons, Tea Spoons, & Tonges,  
Silver, plated & Pinchbeck, Buckles, Gold  
Rings, set with Diamonds, Topaz, Emeralds,  
& Amethysts & Gold, & Silver set Sleeve  
Buttons, Shirt Buckles, Variety of paste, &  
Stone shoe, knee, & stock Buckles, Necklaces,  
& Earrings, Smelling Bottles & Etwees, Paper  
& Tortoiseshell snuff Boxes, Silver Shimbles,*

PLATED SPURS, AND TEMPLE SPECTACLES &c  
Old Watches, and Diamonds Taken in  
EXCHANGE.

NB. THE HIGHEST PRICE GIVEN  
FOR OLD GOLD, SILVER, OR JACE.



Evans Inv

Liverpool

English Trade Card  
18th Century  
(Lewis Walpole Library)



English Trade Card  
18th Century  
(Lewis Walpole Library)



Watch Key of Pinchbeck (An Inexpensive Alloy Made to Look Like Gold)  
(Museum of London)

# Watch Keys



“Crank - Wind” Watch Key  
18th Century  
(Niels Hobbs Collection)



“Crank - Wind” Watch Key  
18th Century  
(Niels Hobbs Collection)



*“Crank - Wind” Watch Key  
18th Century  
(Niels Hobbs Collection)*



“Crank - Wind” Watch Key  
18th Century  
(Niels Hobbs Collection)



"Crank - Wind" Watch Key  
18th Century  
(Niels Hobbs Collection)



“Crank - Wind” Watch Key  
18th Century  
(Niels Hobbs Collection)



“Crank - Wind” Watch Key  
18th Century  
(Niels Hobbs Collection)



“Crank - Wind” Watch Key  
18th Century  
(Niels Hobbs Collection)



“Crank - Wind” Watch Key  
18th Century  
(Niels Hobbs Collection)



*“Crank - Wind” Watch Key  
18th Century  
(Niels Hobbs Collection)*



Gold, Glass, & Hair Watch Key Belonging to Thomas Jefferson  
Dedicated to His Wife & Containing a Lock of Her Hair: "Martha W. Jefferson Born 19 Oct. 1748, Died 6 Sept. 1782"  
c. 1786  
(Christie's)

# Watch Labels



Aaron Willard Clock Label  
by Paul Revere Boston  
(American Antiquarian Society)

# Acknowledgements

Many thanks are extended to our friends, Paul Dickfoss, Niels Hobbs, Neal Hurst, Ward Oles, and Eric Schnitzer, for taking the time (no pun intended) to contribute some of the wonderful material which graces the pages of this slideshow.

Thank you Gentlemen!

- The 18th Century Material Culture Resource Center



# Acknowledgements

The material contained within these slideshows is presented for educational purposes only. The 18th Century Material Culture Resource Center does not personally own any of the items depicted herein and is indebted to the countless museums, libraries, and private collectors who willingly share their collections with the public through the internet. Every attempt has been made to credit these organizations and individuals for their contributions as best as possible.

If there is a question you have regarding a particular item featured within a presentation, please contact the 18th Century Material Culture Resource Center and we will try to answer your inquiry as best as possible. If for any reason you feel there is any item that should not be presented here, or if there is an error in any listing, or if you know the source for any item whose credit is unknown, please inform us and we will make sure your concern is addressed as soon as possible.

Thank you!

- The 18th Century Material Culture Resource Center