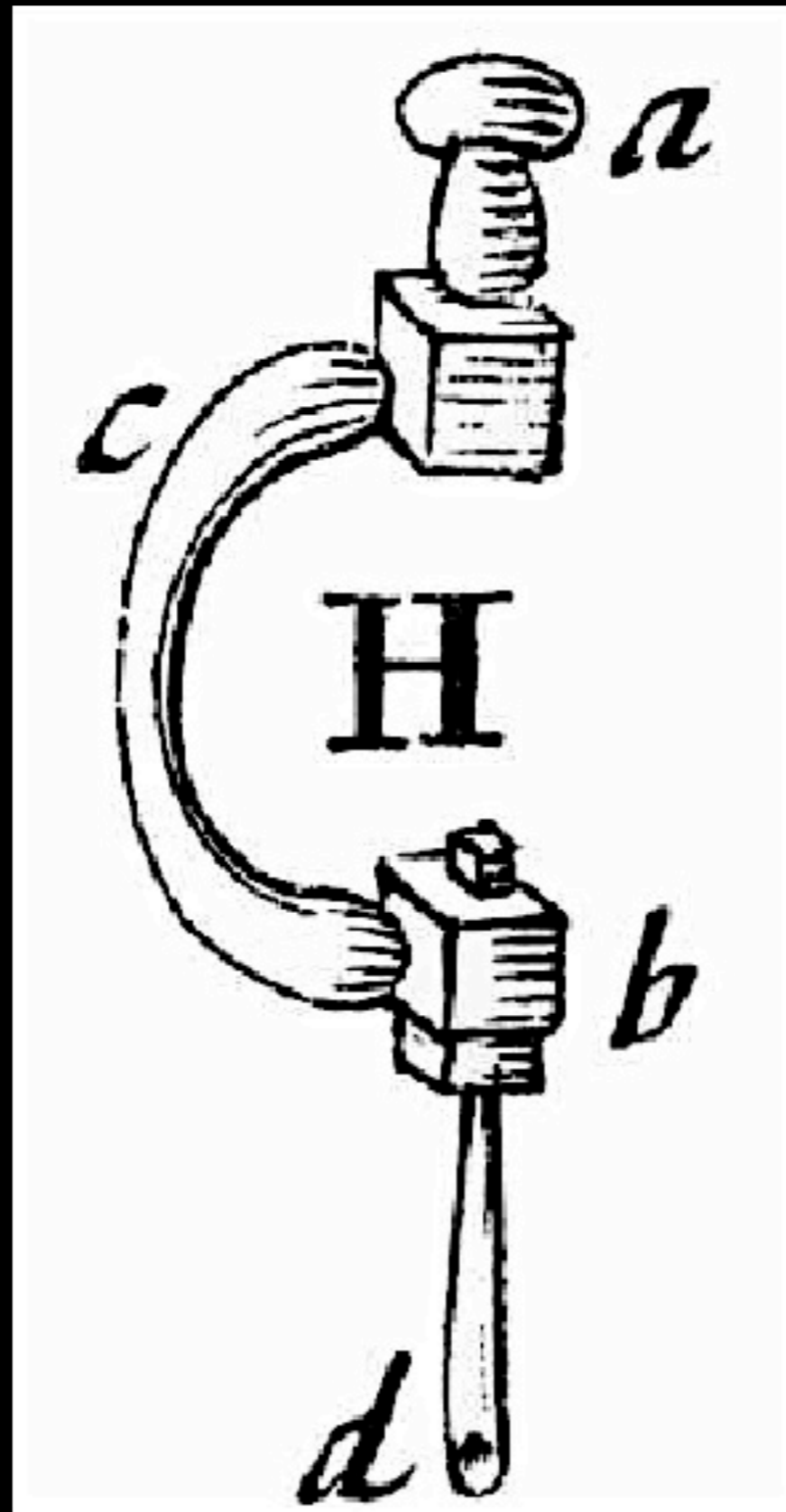


18th Century Material Culture Tools

Braces, Drills, Augers & Gimlets

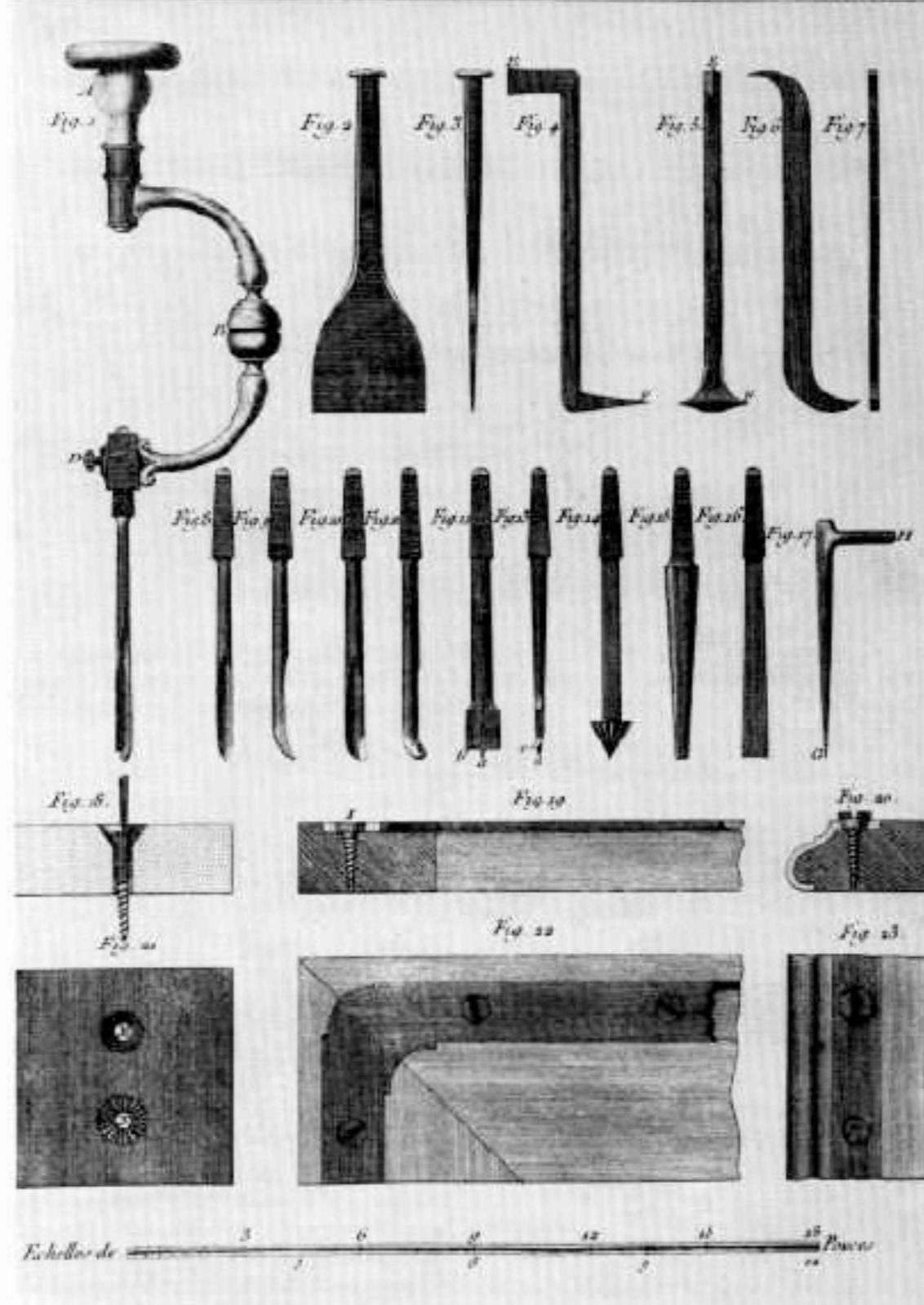


Bit Braces



Detail: "Mechanick Exercises: Or The Doctrine Of Handy-Works"
by Joseph Moxon 1703

DIVERSES SORTES D'OUTILS PROPRES A FERER L'EBENISTERIE.



L'Art du Menuisier
by André Roubo 1774



Dutch Style Burl Bit Brace
18th Century
(Jim Bode Antique Tools)



Bitstocks or Bit Braces
18th Century
(Colonial Williamsburg)



Birmingham, England, Bitstocks or Bit Brace of Birch
c. 1770 - 1781
(Colonial Williamsburg)



Bit Brace
18th Century
(Private Collection)



European Cormier Wood Bit Brace
18th Century
(Jim Bode Antique Tools)



European Cormier Wood Bit Brace
18th Century
(Jim Bode Antique Tools)



European Cormier Wood Bit Brace
18th Century
(Jim Bode Antique Tools)



European Cormier Wood Bit Brace
18th Century
(Jim Bode Antique Tools)



Cage Head Bit Brace
18th Century
(Jim Bode Antique Tools)



Bit Brace
18th - Possibly Early 19th Century
(Jim Bode Antique Tools)



Chairmaker's Chest Brace with Spoon Bit
18th - Possibly Early 19th Century
(Jim Bode Antique Tools)



Chairmaker's Chest Brace with Spoon Bit
18th - Possibly Early 19th Century
(Jim Bode Antique Tools)



*3/8" Spoon Bit
18th Century
(Jim Bode Antique Tools)*

Bow Drills



Bow Drill
18th Century
(Jim Bode Antique Tools)

Augers



Center Bit Auger
c. 1780 - 1840
(Colonial Williamsburg)

2.7.8.2. AUGERS / ŚWIDRY ŁYŻKOWE

W-32/726/96, CMM/BO/NW/131

Site location / Lokalizacja: 7L1.
Dimensions / Wymiary: length / długość
410 mm, width / szerokość 43 mm.

Part of an auger. The iron blade takes the form of a semi-cylindrical channel with sharp cutting edges. There are large losses in the middle part of the blade and no extant tang for setting in a wooden handle. The cutting edge is damaged. Diameter of drilled holes: 43 mm.

Fragment świdra łyżkowego. Żelazne pióro w kształcie półwalcowej rynny z ostrymi krawędziami tnącymi. Duże ubytki w środkowej części ostrza. Brak zakończenia do osadzania w drewnianym uchwycie. Część trąca uszkodzona. Średnica wierconych otworów 43 mm.

W-32/196/95, CMM/BO/NW/719

Site location / Lokalizacja: 22L3.
Dimensions / Wymiary:
length / długość 285 mm,
width / szerokość 21 mm.

Two fragments of an auger. The iron blade takes the form of a semi-cylindrical channel with sharp cutting edges. Significant losses feature in the middle part of the blade and there is no extant tang for setting in a wooden handle. The cutting edge is damaged. Diameter of drilled holes: 21 mm.

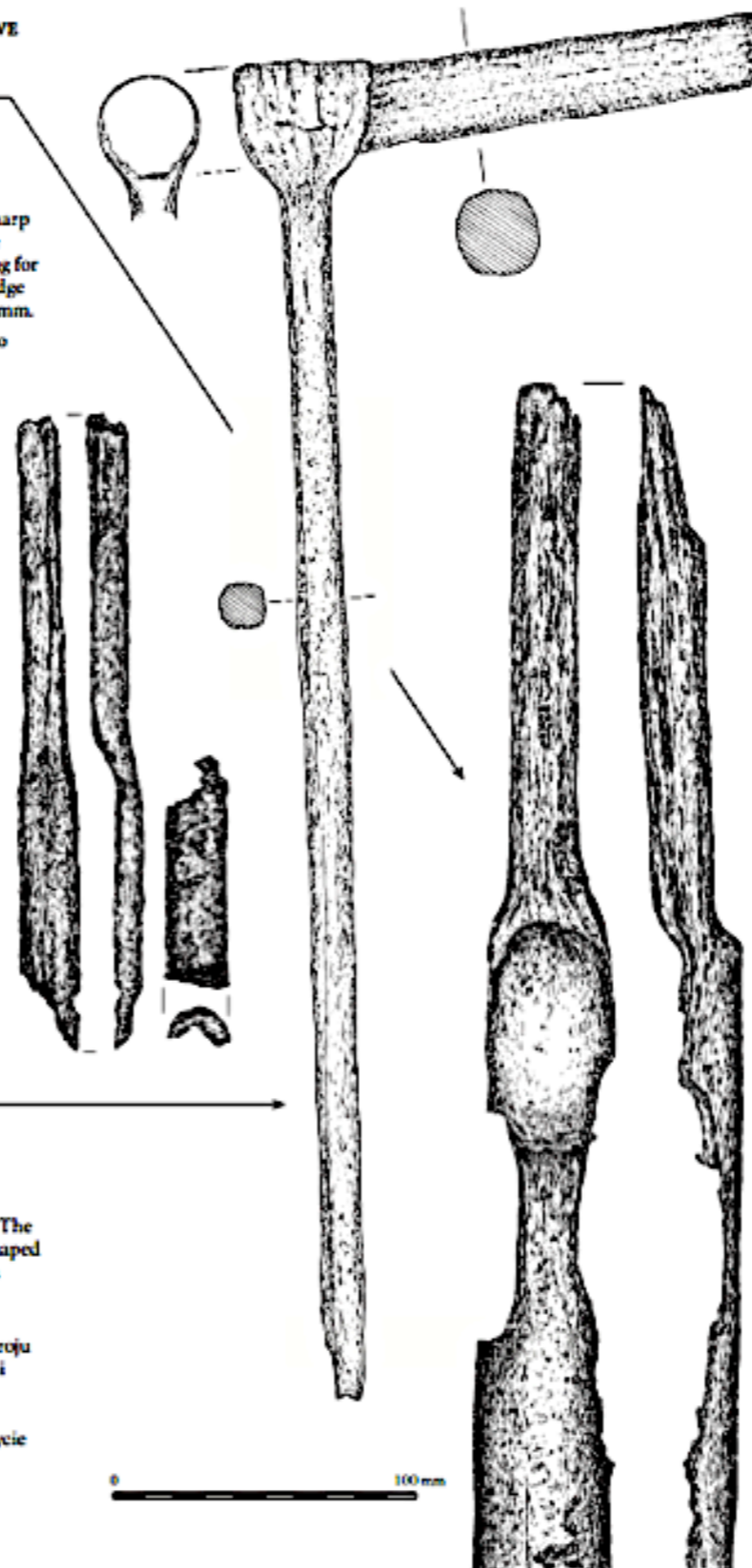
Dwa fragmenty świdra łyżkowego. Żelazne pióro w kształcie półwalcowej rynny z ostrymi krawędziami tnącymi. Duże ubytki w środkowej części ostrza. Brak zakończenia do osadzania w drewnianym uchwycie. Część trąca uszkodzona. Średnica wierconych otworów 21 mm.

W-32/323/95, CMM/BO/1806

Site location / Lokalizacja: 20L2.
Dimensions / Wymiary: length / długość
439 mm, width / szerokość 175 mm.

Iron tool made from a rod of rectangular section (15 x 15 mm) with bevelled edges. The blade is missing. The end of the auger is shaped into a sleeve to receive a wooden handle, a broken part of which survives, measuring 175 mm in length and 6 mm in diameter.

Żelazne narzędzie wykute z pręta o przekroju kwadratowym 15 x 15 mm ze szlifowanymi krawędziami. Brak części tnącej. Koniec świdra uformowany w poziomy uchwyt (tulejkę) na drewnianą rękojeść. W uchwycie zachowany ułamany trzonek rękojeści o długości 175 mm i średnicy 26 mm.



Augers. Recovered from the Wreck of the General Carleton of Whitby 1785

From: Ossowski, Waldemar, ed.; "The General Carleton Shipwreck, 1785."

Archaeological Research of the Polish Maritime Museum. Vol. I. Maritime Museum in Gdansk. Gdansk, Poland. 2008



Cock Auger
18th Century
(Jim Bode Antique Tools)



Cock Auger
18th Century
(Jim Bode Antique Tools)



Auger Nose Tip
18th Century
(Colonial Williamsburg)



Twist Auger Tip
18th Century
(Colonial Williamsburg)



Chairmaker's "T" Auger
18th Century
(Jim Bode Antique Tools)



(Fort Dobbs)

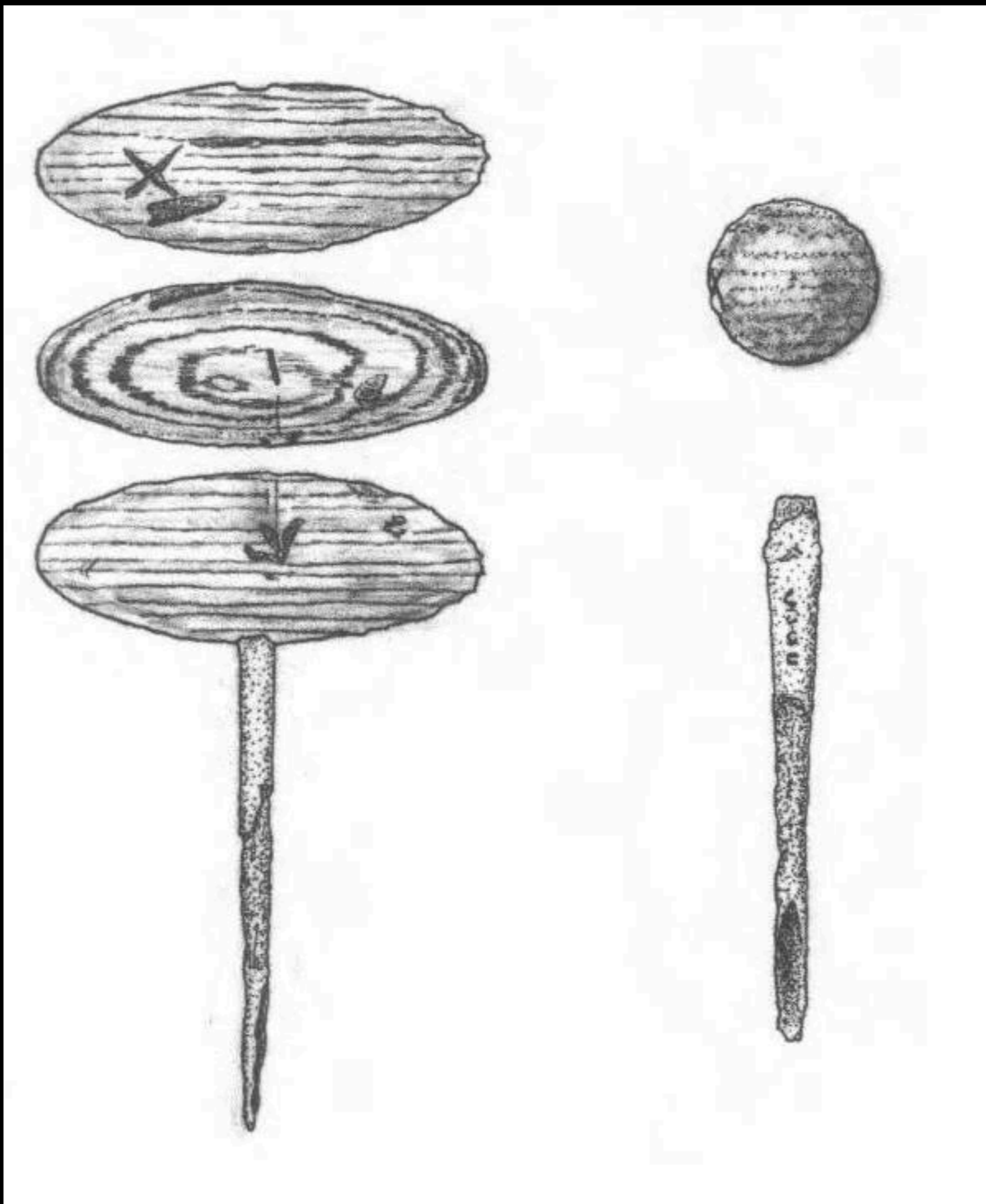
Gimlets
&
Bore Pins



Gimlet for Creating Pilot Holes
18th Century
(Colonial Williamsburg)



9" Gimlet or Draw Bore Pin
18th Century
(Jim Bode Antique Tools)



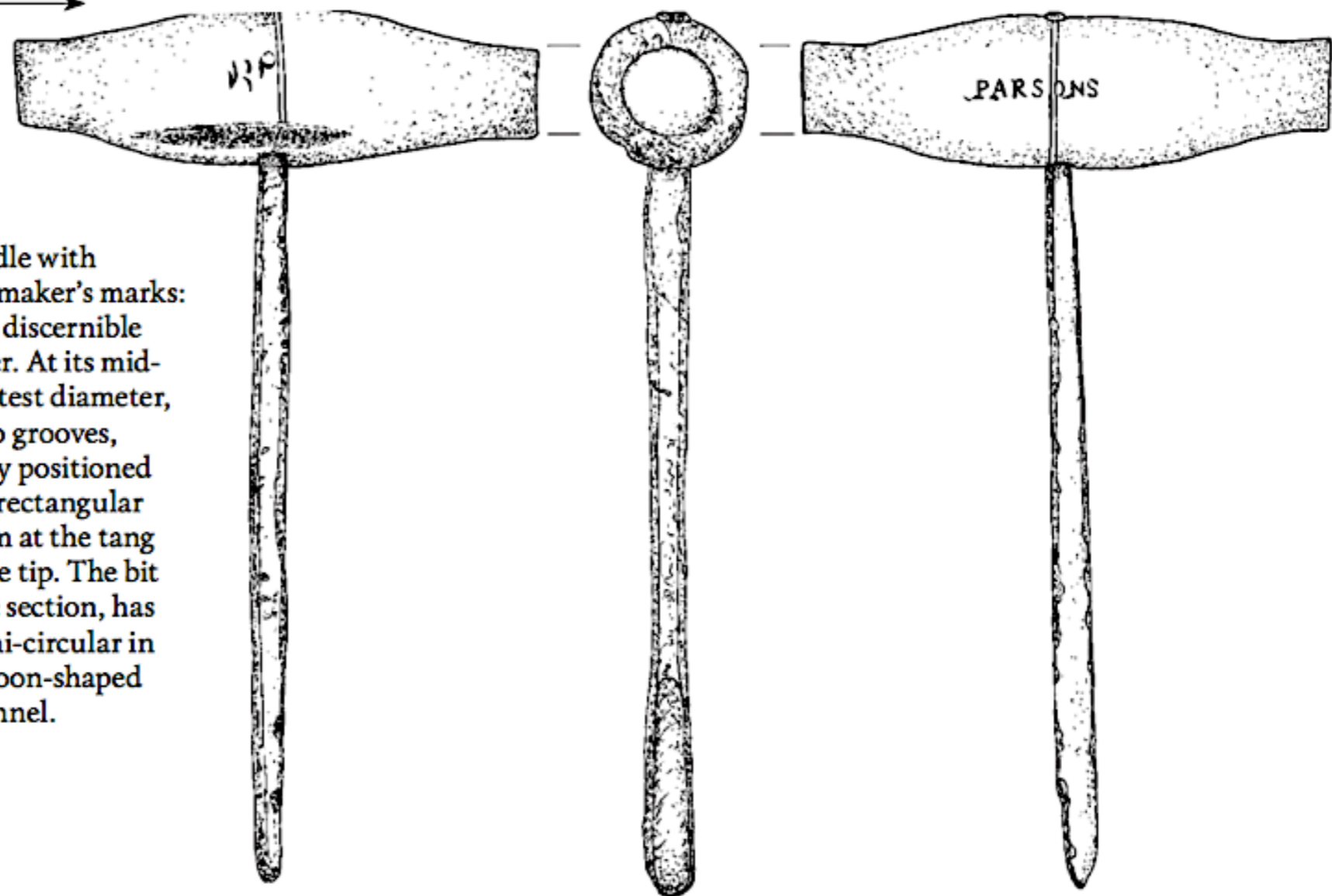
Gimlet. Recovered from the Wreck of the Boscawen, which sank in Lake Champlain in the late 1760's
From: Grant, David Mitchell; "Tools from the French and Indian War Sloop Boscawen" Texas A and M University. 1996.

2.7.8.5. GIMLETS / ŚWIDRY ŻŁOBKOWE I ŚLIMAKOWE

W-32/44/95, CMM/BO/1808

Site location /
Lokalizacja: 21P1.
Dimensions / Wymiary:
length / długość 170 mm,
width / szerokość 104 mm,
diameter / średnica 18 mm.

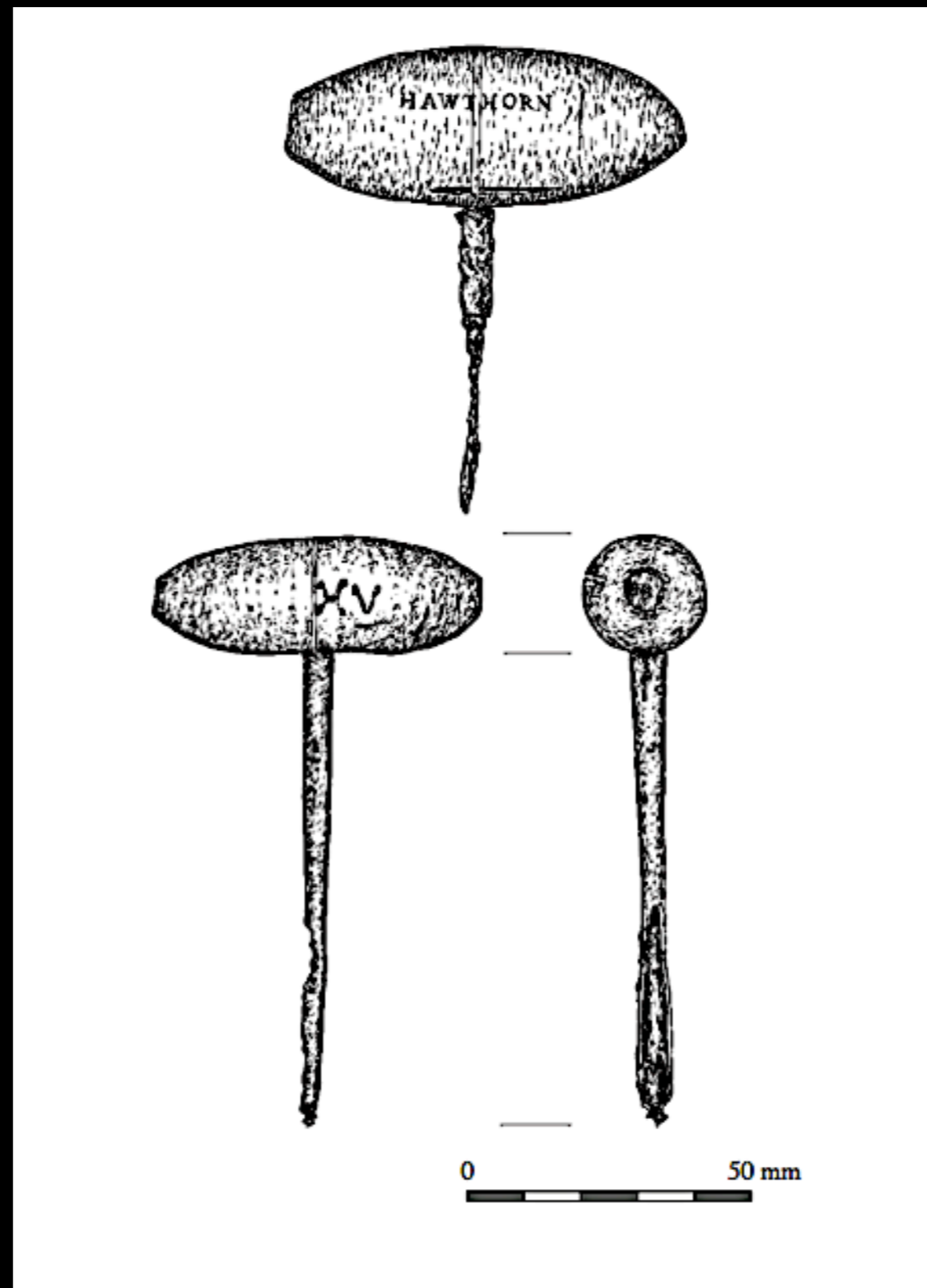
Wooden, spindle-shaped handle with a diameter of 18 mm, bearing maker's marks: 'P' on one side and the faintly discernible name 'PARSONS' on the other. At its midpoint, where it attains its greatest diameter, the handle is decorated by two grooves, spaced 1 mm apart. A centrally positioned socket accommodates a bit of rectangular section, narrowing to 9 x 4 mm at the tang and measuring 5 x 3 mm at the tip. The bit with a grip of 7 x 7 mm square section, has bevelled edges. The end is semi-circular in section and has a rounded, spoon-shaped blade with a 45-mm-long channel.



Gimlet. Recovered from the Wreck of the General Carleton of Whitby 1785

From: Ossowski, Waldemar, ed.; "The General Carleton Shipwreck, 1785."

Archaeological Research of the Polish Maritime Museum. Vol. I. Maritime Museum in Gdansk. Gdansk, Poland. 2008



Gimlet. Recovered from the Wreck of the General Carleton of Whitby 1785

From: Ossowski, Waldemar, ed.; "The General Carleton Shipwreck, 1785."

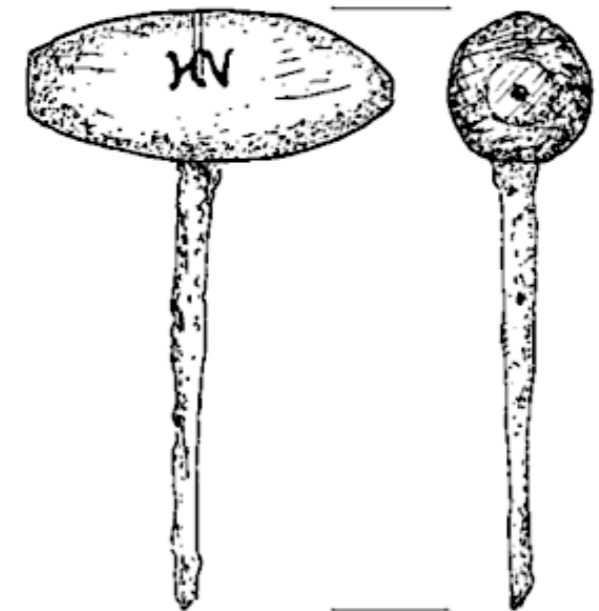
Archaeological Research of the Polish Maritime Museum. Vol. 1. Maritime Museum in Gdansk. Gdansk, Poland. 2008

W-32/49/95, CMM/BO/1807

Site location / Lokalizacja: 21P1.

Dimensions / Wymiary: length / długość 75 mm,
width / szerokość 37 mm, diameter / średnica 23 mm.

Wooden, spindle-shaped handle turned from a single piece of wood. At the mid-point of the handle there are two decorative incisions, spaced 1 mm apart. The handle bears the letters 'HV'. The metal tool is made from a rod, 55 mm long.



Gimlet. Recovered from the Wreck of the General Carleton of Whitby 1785

From: Ossowski, Waldemar, ed.; "The General Carleton Shipwreck, 1785."

Archaeological Research of the Polish Maritime Museum. Vol. 1. Maritime Museum in Gdansk. Gdansk, Poland. 2008

Acknowledgements

The material contained within these slideshows is presented for educational purposes only. The 18th Century Material Culture Resource Center does not personally own any of the items depicted herein and is indebted to the countless museums, libraries, and private collectors who willingly share their collections with the public through the internet. Every attempt has been made to credit these organizations and individuals for their contributions as best as possible.

If there is a question you have regarding a particular item featured within a presentation, please contact the 18th Century Material Culture Resource Center and we will try to answer your inquiry as best as possible. If for any reason you feel there is any item that should not be presented here, or if there is an error in any listing, or if you know the source for any item whose credit is unknown, please inform us and we will make sure your concern is addressed as soon as possible.

Thank you!

- The 18th Century Material Culture Resource Center